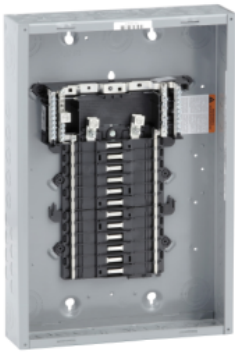


Product data sheet

Specifications

SQUARE D

Green
Premium™



Load center, QO, 1 phase, 24 spaces, 34 circuits, 125A convertible main lugs, PoN, NEMA1, gnd bar, UL

QO124L125PG

Product availability : Stock - Normally stocked in distribution facility

Price* : 534.00 USD

Main

Marketing Trade Name	QO
Product Type	Load Center
Cover Type	Order separately

Complementary

Tightening Torque	Main lugs 50 lb.in, AWG 6...AWG 2/0, aluminium/copper Cover 20 lb.in
Load Center Type	Main lugs
Rated Current	125 A
Number of Spaces	24
Max Short Circuit Current Rating	65 kA
Maximum Number of Single Pole Circuits	34
Maximum Number of Tandem Breakers	10
Number of Phases	1 phase
Voltage Rating	120/240 V AC
Wire Size	AWG 6...AWG 2/0 aluminium/copper
Ground Bar	Grounding bar included (not installed)
Electrical Connection	Lugs
Wiring Configuration	3-wire
Busbar Material	Tin plated copper busbar
Enclosure Material	Welded sheet steel
Surface Finish	Baked enamel Gray
Box Number	7
Height	20.91 in (531 mm)
Width	14.25 in (362 mm)

* Price is "List Price" and may be subject to a trade discount – check with your local distributor or retailer for actual price.

Environment

Enclosure Rating	NEMA 1 indoor
Ambient Air Temperature for Operation	23 °F (-5 °C) 104 °F (40 °C)
Product Certifications	UL Listed

Ordering and shipping details

Category	10003 - QO PON 1PH LC,12-60 CKT, ML N1
Discount Schedule	DE3A
GTIN	785901133865
Nbr. of units in pkg.	1
Package weight(Lbs)	12.20 lb(US) (5.534 kg)
Returnability	Yes
Country of origin	US

Packing Units

Unit Type of Package 1	PCE
Package 1 Height	4.20 in (10.668 cm)
Package 1 width	14.60 in (37.084 cm)
Package 1 Length	22.00 in (55.88 cm)
Unit Type of Package 2	PAL
Number of Units in Package 2	45
Package 2 Weight	566.10 lb(US) (256.778 kg)
Package 2 Height	40.00 in (101.6 cm)
Package 2 width	36.00 in (91.44 cm)
Package 2 Length	48.00 in (121.92 cm)

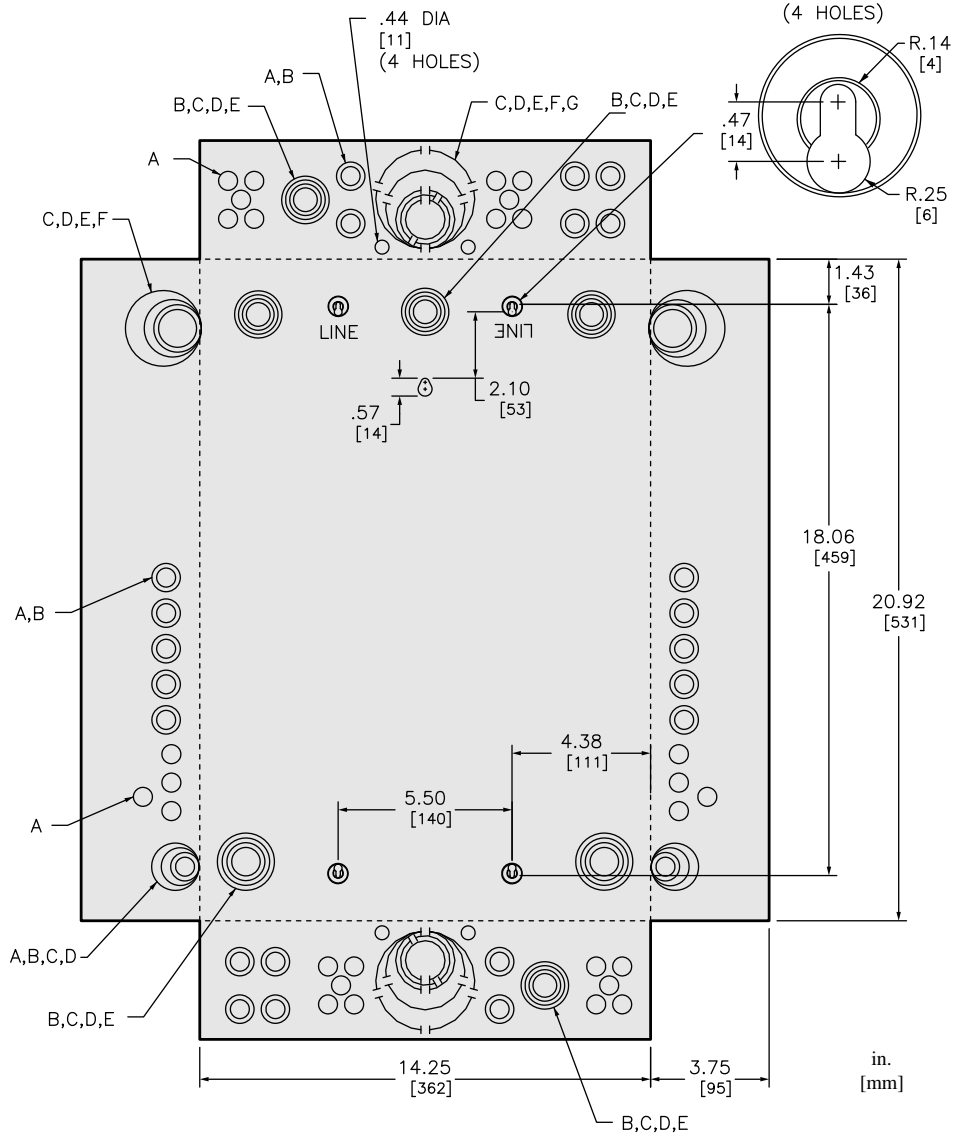
Offer Sustainability

Sustainable offer status	Green Premium product
California proposition 65	WARNING: This product can expose you to chemicals including: Lead and lead compounds, which is known to the State of California to cause cancer and birth defects or other reproductive harm. For more information go to www.P65Warnings.ca.gov
REACH Regulation	REACH Declaration
REACH free of SVHC	Yes
EU RoHS Directive	Compliant EU RoHS Declaration
Toxic heavy metal free	Yes
Mercury free	Yes
RoHS exemption information	Yes
China RoHS Regulation	China RoHS declaration Pro-active China RoHS declaration (out of China RoHS legal scope)

Contractual warranty

Warranty	18 months
----------	-----------

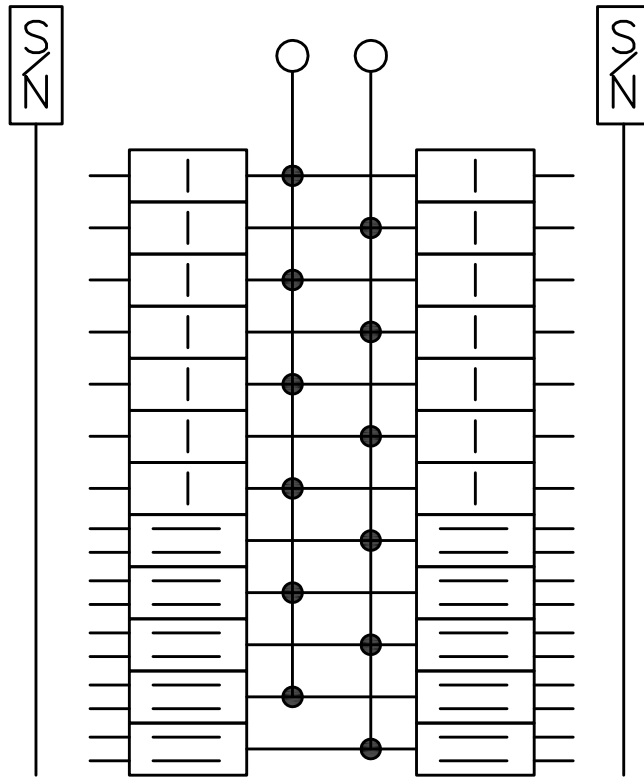
Dimensions



KNOCKOUTS							
SYMBOL	A	B	C	D	E	F	G
IN	.50	.75	1.00	1.25	1.50	2.00	2.50
MM	13	19	25	32	38	51	64

All dimensions are approximate.
 Also see technical drawings and/or documentation.

Wiring Diagram



QO124L125PG
QO124L125PGC