

# GUSC enclosures with manual motor starters

Cl. I, Div. 1 & 2, Groups C, D  
 Cl. II, Div. 1, Groups E<sup>A</sup>, F, G  
 Cl. II, Div. 2, Groups F, G  
 Cl. III  
 NEMA 3, 7CD, 9EFG, 12

Explosionproof  
 Dust-ignitionproof  
 Raintight  
 Wet Locations

2C

## Applications:

- GUSC manual motor starters are used:
- In a rigid metallic conduit system for surface mounting adjacent to or remote from the equipment being controlled
  - To prevent arcing of the enclosed switches from causing ignition of a specific hazardous atmosphere, or atmospheres, external to the enclosure
  - In industrial areas, such as chemical plants, oil and gas refineries, paint and varnish manufacturing plants, gasoline bulk loading terminals, grain elevators, grain processing industries, coal processing or handling areas, or metal handling or finishing areas where the atmosphere may contain hazardous gases and/or dust
  - In non-hazardous areas where sturdy, durable enclosures are required

## Features:

- Enclosures are of rugged metal construction with mounting lugs and taper tapped hubs with integral bushings, in a through feed or bottom feed arrangement, for connection to the rigid metallic conduit
- Cover is threaded, which provides for fast and proper assembly
- Provided with a threaded operating shaft and bushing
- Provision is made to use a padlock with  $\frac{1}{4}$ " hasp, to lock the operating lever in an ON or OFF position
- Body and cover threads treated with lubricant at factory to provide raintightness

## Certifications and compliances:

### NEC/CEC:

- Class I, Divisions 1 & 2, Groups C, D
- Class II, Division 1, Groups E<sup>A</sup>, F, G
- Class II, Division 2, Groups F, G
- Class III

### UL standard:

- UL1203

### CSA standard:

- C22.2 No. 30

### Environmental ratings:

- NEMA/EEMAC 3, 7CD, 9EFG, 12

## Standard materials:

- Body – Feraloy iron alloy
- Cover – copper-free aluminum
- Shaft and shaft bushing – stainless steel

## Standard finishes:

- Feraloy iron alloy – electrogalvanized and aluminum acrylic paint
- Copper-free aluminum – natural
- Stainless steel – natural

## Electrical ratings:

- See below

## Size ranges:

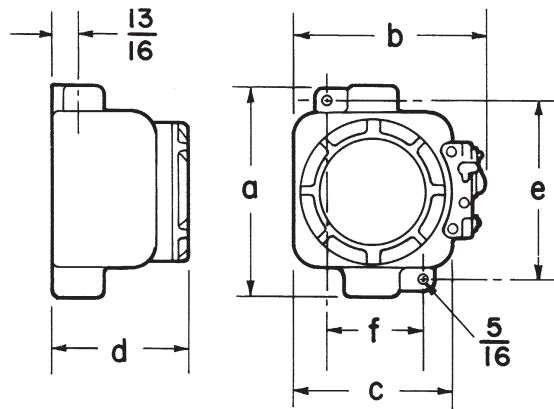
- Hub size –  $\frac{3}{4}$ " (through feed arrangement)

## Ordering information:

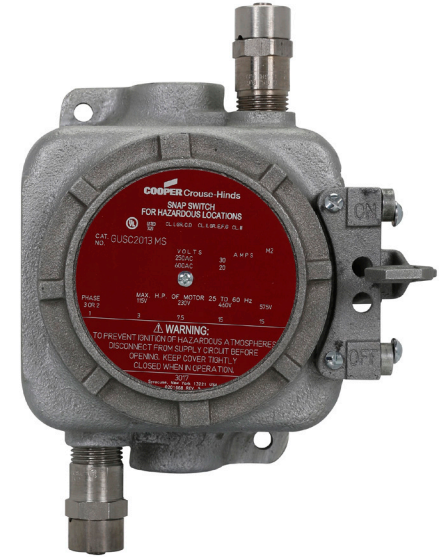
Cat. #	No. of poles	Voltage / horsepower				Hub size
		120 VAC / 3 HP	240 VAC / 7.5 HP	480 VAC / 15 HP	600 VAC / 15 HP	
GUSC2013-MS <sup>A</sup>	3-pole	30A	30A	30A	20A	$\frac{3}{4}$ "

Cat. #	No. of poles	Voltage / horsepower				Hub size
		120 VAC / 3 HP	240 VAC / 7.5 HP	480 VAC / 15 HP	600 VAC / 20 HP	
GUSC2036-MS	3-pole	40A	40A	40A	40A	$\frac{3}{4}$ "

## Dimension<sup>Ⓒ</sup> (in inches):



Style	No. of poles	a	b	c	d	e	f
Through feed	3-pole	$6\frac{7}{16}$	$6\frac{7}{16}$	$4\frac{7}{8}$	$4\frac{7}{8}$	$5\frac{7}{8}$	3



<sup>A</sup>Standard product is suitable for Class II, Divisions 1 & 2, Groups F, G. For Class II, Division 1, Groups E, F, G, order with suffix S756V.

<sup>B</sup>Also rated for 30A, 250 VDC, 15 HP.

<sup>C</sup>Dimensions are approximate, not for construction purposes.