

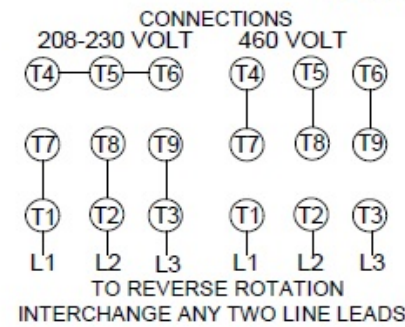
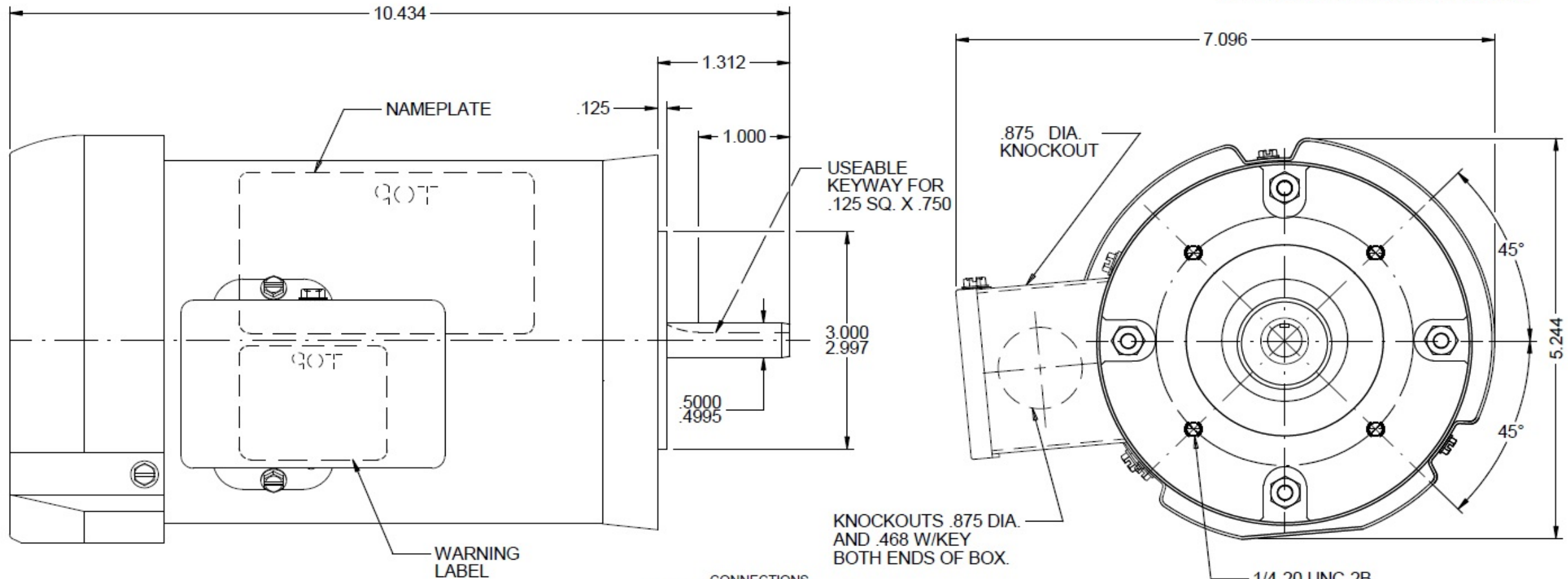
Dimensional Drawing



3N841BG REV. -

MODEL	REF	CUSTOMER	CUSTOMER PN	HP	VOLTS	AMPS	HZ	RPM	ROTATION	DESCRIPTION / REMARKS
P48CRP-0144		GRAINGER	3N841BG	1/4	208-230/460	1.1-1.1/0.57 & 1.2-1.4/0.71	60 & 50	1725 & 1425	REVERSIBLE	P48, C-FACE, BALL, TEFC

NOTE: KEY AND INSTRUCTION BOOK SHIPPED AS A KIT IN A PLASTIC BAG



1/4-20 UNC-2B
4 REQ'D ON A
3.750 DIA. B.C.

DRAWING NO.	PAGE 1 of 1	REV.
	3N841BG	-

Dayton Electric Mfg. Co. Lake Forest, IL 60045 USA



3N841BG

REV.

-

0

MOTOR PERFORMANCE

HP:	1/4 HP						
Poles:	4						
No. of Speeds:	1						
Volts:	208-230/460	208		230		460	
HZ:	50 / 60	50	60	50	60	50	60
Service Factor:	1.15	1.15	1.15	1.15	1.15	1.15	1.15
Efficiency:	@ Rated Load	68.5	74.6	63.3	72.7	63.5	72.5
Power Factor:	@ Rated Load	61.4	69.4	53.3	62.2	52.8	62.9
Amps:	@ No Load						
	@ Rated Load	1.2	1	1.4	1	0.7	0.5
	@ Service Factor	1.3	1.1	1.4	1.1	0.7	0.5
	@ Locked Rotor	5.9	5.7	6.6	6.3	3.2	3.1
RPM:	@ Rated Load	1430	1724	1442	1740	1446	1738
Ambient (°C):							
Altitude (FASL):							
Torques:	Breakdown						
	Locked Rotor	60.8	45.58	71.73	56.4	67.79	55.93
	Pull-Up	57.8	45.2	71.2	55.8	66.6	55.4
	Rated Load	14.7	12.2	14.7	12.2	14.7	12.2
	Service Factor	17	14.1	16.8	14	16.8	14
Watts:	Rated Load	272	250	297	259	297	260
KVA Code:							
Temperature Rise:	@ Rated Load	56	38	73.8	47.9	72.9	44.4
	@ Service Factor	70.5	51.3	82.3	52.6	82.6	53.4
Thermal Protector:	Trip Temp (°C)						
Winding Material:	Start (Auxiliary)						
	Run (Main)	Cu	Cu	Cu	Cu	Cu	Cu
Capacitor(s):	Start (MFD / Volts)						
	No. of Start Capacitors						
	Run (MFD / Volts)						
	No. of Run Capacitors						

LOW SPEED PERFORMANCE DATA:

HP:							
Poles:							
Volts:							
HZ:							
Efficiency:	@ Rated Load						
Power Factor:	@ Rated Load						
Amps:	@ No Load						
	@ Rated Load						
	@ Service Factor						
	@ Locked Rotor						
Torques:	@ Rated Load						
	Locked Rotor						
	Pull-Up						
	Rated Load						
	Service Factor						
Watts:	@ Rated Load						
Temperature Rise:	@ Rated Load						
	@ Service Factor						

DRAWING NO. PAGE 1 REV.
3N841BG -

Performance Data



3N841BG	REV. -
----------------	-----------

Dayton Manufacturing Company

Motor Description

Model: P048CRP0144 3N841BG
 Motor ID:
 Poles: 4
 Volts: 208-230/460
 Frequency: 60
 HP: 1/4
 Speed: 1725
 Phase: 3
 Protector: NONE

Test Conditions

Test Type: Start
 Test Number: 11
 Poles: 4
 Volts: 230
 Hz: 60
 Rotation:
 Special Cond:
 Speed Conn:
 TestBoard: Amtps Performance Fixture #4
 Run Cap: 0
 Start Cap: 0µfd
 Environment:
 Tested: 10/20/2003 11:49:56 AM
 Tested By: Clausner, Chris
 Gear Ratio: 1:1
 Bearing Friction: -0.03 Oz-Ft
 Windage Torque: -0.34 Oz-Ft

Special Points	Vab (V)	Vbc (V)	Vca (V)	Ia (A)	Ib (A)	Ic (A)	Watts	RPM	Tq (Oz-ft)	HP	Eff (%)	PF (%)
	229.3	229.4	231.3	6.322	6.392	6.456	2133	84	56.40	0.056	2.0	83.8
	229.3	229.4	231.3	6.340	6.402	6.465	2136	70	56.40	0.047	1.6	83.8
PUT OZ-FT	229.3	229.5	231.2	6.212	6.270	6.344	2106	171	55.75	0.113	4.0	84.2
	229.3	229.5	231.2	6.196	6.254	6.326	2101	184	55.78	0.122	4.3	84.3
	229.3	229.4	231.2	5.973	6.034	6.097	2043	340	57.40	0.232	8.5	85.0
	229.3	229.5	231.2	5.730	5.789	5.851	1976	489	58.76	0.342	12.9	85.7
	229.3	229.5	231.2	5.481	5.537	5.597	1905	622	59.55	0.441	17.3	86.4
	229.3	229.5	231.2	5.233	5.289	5.343	1833	739	60.06	0.528	21.5	87.0
	229.3	229.5	231.2	4.990	5.040	5.088	1758	843	60.12	0.604	25.6	87.6
	229.3	229.6	231.2	4.744	4.790	4.839	1683	937	59.93	0.668	29.6	88.2
	229.3	229.5	231.2	4.491	4.539	4.579	1603	1022	59.39	0.723	33.6	88.7
	229.3	229.5	231.2	4.242	4.288	4.324	1522	1100	58.48	0.766	37.5	89.2
	229.3	229.5	231.2	3.995	4.038	4.069	1439	1170	57.23	0.797	41.3	89.5
	229.3	229.5	231.2	3.747	3.790	3.815	1354	1235	55.63	0.818	45.0	89.8
	229.3	229.5	231.2	3.503	3.543	3.563	1268	1294	53.72	0.827	48.7	90.0
	229.3	229.6	231.2	3.263	3.302	3.317	1183	1348	51.58	0.828	52.2	90.2
	229.2	229.6	231.2	3.035	3.074	3.083	1101	1395	49.13	0.816	55.3	90.2
	229.2	229.5	231.2	2.813	2.850	2.854	1018	1439	46.56	0.798	58.4	90.0
	229.2	229.6	231.2	2.598	2.633	2.634	937	1479	43.76	0.771	61.4	89.7
	229.3	229.5	231.2	2.387	2.429	2.424	858	1515	40.77	0.735	63.9	89.3
	229.2	229.6	231.1	2.193	2.232	2.224	783	1551	37.78	0.697	66.4	88.7
	229.2	229.6	231.2	2.008	2.045	2.032	708	1581	34.62	0.652	68.6	87.7
	229.2	229.6	231.1	1.831	1.867	1.849	636	1609	31.37	0.601	70.5	86.3
	229.2	229.7	231.1	1.668	1.702	1.679	567	1635	28.16	0.548	72.1	84.6
	229.3	229.6	231.2	1.515	1.552	1.523	501	1659	24.91	0.492	73.3	82.2
	229.2	229.6	231.1	1.371	1.405	1.370	434	1683	21.50	0.431	74.1	78.8
	229.2	229.6	231.2	1.236	1.268	1.227	368	1704	18.00	0.365	74.0	74.3
	229.3	229.6	231.1	1.119	1.149	1.100	304	1725	14.48	0.297	72.9	68.0
	229.3	229.5	231.2	1.021	1.052	0.992	244	1745	11.08	0.230	70.5	59.8
	229.3	229.5	231.2	0.938	0.966	0.897	179	1764	7.35	0.154	64.3	48.2
	229.3	229.5	231.2	0.877	0.905	0.824	115	1784	3.56	0.076	48.9	33.3
	229.3	229.5	231.2	0.855	0.881	0.787	61	1800	0.36	0.008	9.3	18.2

DRAWING NO.	PAGE 1 of 8	REV.
	3N841BG	-

Dayton Electric Mfg. Co. Lake Forest, IL 60045 USA

Performance Data



3N841BG REV. -



Dayton

Curve Descriptions:
Motor(1) Test 11 Start 230V 60 Hz 4P

- SPEED vs WATTS
- SPEED vs TORQUE
- △ SPEED vs Ia

Motor Ratings:
(1) P048CRP0144 3N841BG

DRAWING NO.	PAGE 2 of 8	REV.
3N841BG		-

Dayton Electric Mfg. Co. Lake Forest, IL 60045 USA

Performance Data



3N841BG REV.
-

Dayton Manufacturing Company

Motor Description

Model: P048CRP0144 3N841BG
 Motor ID:
 Poles: 4
 Volts: 208-230/460
 Frequency: 60
 HP: 1/4
 Speed: 1725
 Phase: 3
 Protector: NONE

Test Conditions

Test Type: Run
 Test Number: 8
 Poles: 4
 Volts: 230
 Hz: 60
 Rotation:
 Special Cond:
 Speed Conn:
 TestBoard: Amps Performance Fixture #4
 Run Cap: 0
 Start Cap: 0µfd
 Environment:
 Tested: 10/20/2003 11:44:27 AM
 Tested By: Clausner, Chris
 Gear Ratio: 1:1
 Bearing Friction: 0.00 Oz-Ft
 Windage Torque: -0.28 Oz-Ft

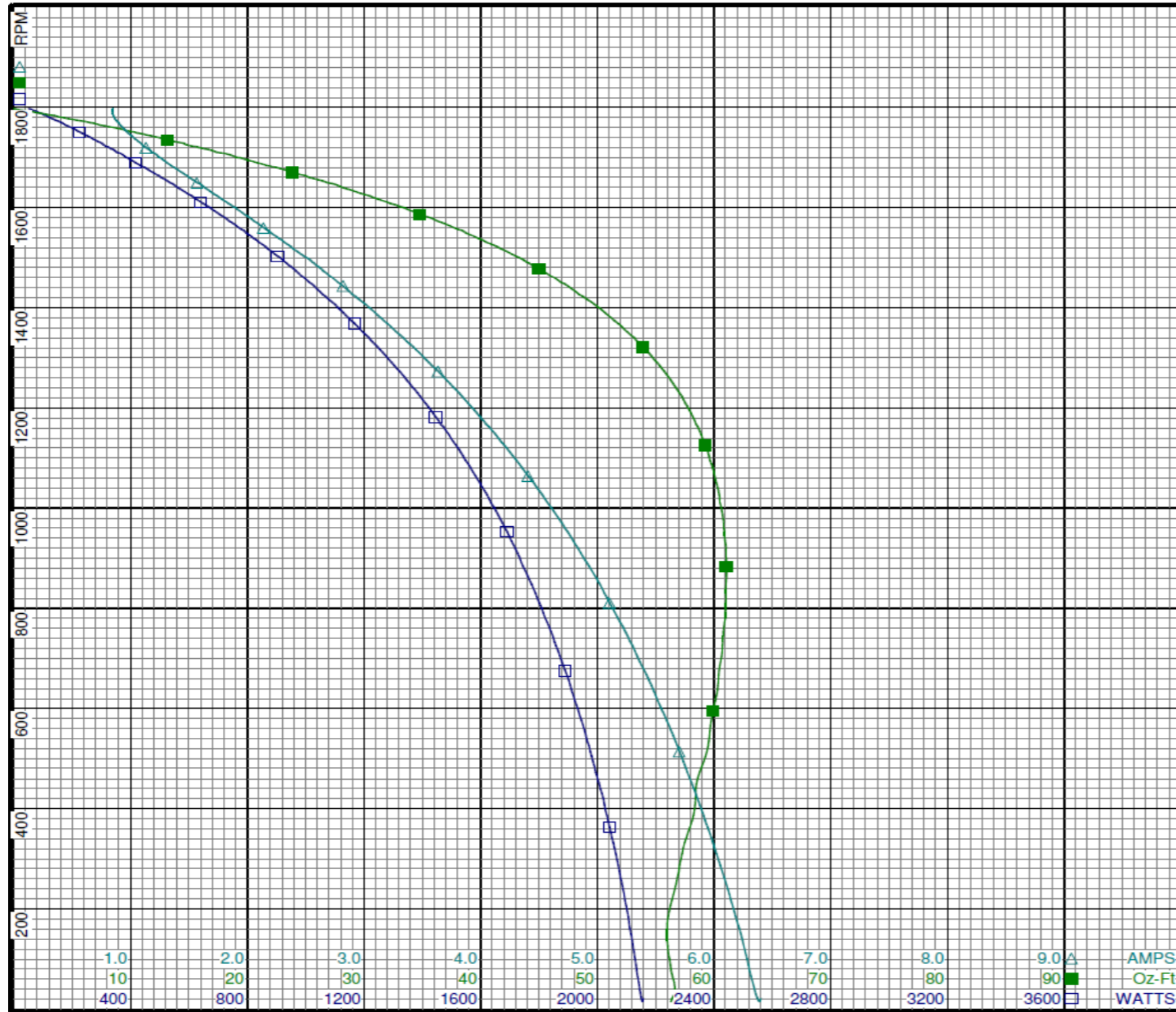
Special Points	Vab (V)	Vbc (V)	Vca (V)	Ia (A)	Ib (A)	Ic (A)	Watts	RPM	Tq (Oz-ft)	HP	Eff (%)	PF (%)
	228.8	229.4	231.8	0.842	0.881	0.781	51	1798	0.00	0.000	0.0	15.3
3 OZ-FT	228.8	229.4	231.7	0.848	0.899	0.813	103	1785	3.00	0.064	46.2	30.3
	228.9	229.4	231.7	0.852	0.903	0.818	111	1783	3.45	0.073	49.5	32.3
6.1 OZ-FT	228.8	229.4	231.7	0.887	0.937	0.865	155	1772	6.10	0.129	61.8	43.5
	228.8	229.4	231.8	0.900	0.950	0.881	168	1768	6.83	0.144	64.0	46.2
9.1 OZ-FT	228.8	229.4	231.7	0.943	0.996	0.934	206	1757	9.10	0.190	68.9	54.0
	228.9	229.4	231.7	0.970	1.024	0.965	226	1751	10.26	0.214	70.6	57.5
12.2 OZ-FT	228.9	229.4	231.8	1.020	1.077	1.024	259	1740	12.20	0.253	72.7	62.6
	228.9	229.4	231.8	1.068	1.126	1.078	288	1731	13.84	0.285	73.7	66.4
0.288 HP	228.9	229.4	231.7	1.072	1.131	1.083	291	1730	13.96	0.288	73.6	66.8
15.2 OZ-FT	228.9	229.4	231.8	1.109	1.168	1.124	313	1723	15.20	0.312	74.3	69.3
	228.9	229.4	231.7	1.182	1.242	1.202	353	1710	17.40	0.354	74.9	73.3
	228.9	229.3	231.8	1.312	1.373	1.341	418	1689	20.87	0.420	74.9	78.1
	228.9	229.4	231.7	1.467	1.529	1.505	489	1665	24.58	0.487	74.3	81.9
	228.9	229.4	231.7	1.638	1.697	1.680	563	1639	28.26	0.551	73.0	84.6
	229.0	229.3	231.8	1.817	1.880	1.867	640	1611	31.89	0.612	71.3	86.6
	229.0	229.3	231.7	2.015	2.080	2.071	721	1580	35.55	0.669	69.2	88.1
	228.8	229.3	231.8	2.225	2.288	2.296	805	1546	39.09	0.719	66.7	89.0
	228.8	229.5	231.7	2.485	2.540	2.556	904	1503	43.02	0.770	63.5	89.8
	228.8	229.5	231.7	2.677	2.730	2.749	976	1469	45.63	0.798	61.0	90.1
	228.9	229.4	231.7	2.927	2.982	3.004	1069	1422	48.77	0.826	57.6	90.3
	229.0	229.3	231.7	3.199	3.255	3.280	1167	1368	51.77	0.843	53.9	90.3
	229.0	229.4	231.6	3.473	3.529	3.561	1265	1310	54.39	0.848	50.0	90.2
	229.0	229.4	231.6	3.737	3.794	3.833	1357	1248	56.49	0.839	46.1	89.9
	229.0	229.4	231.6	3.994	4.057	4.098	1446	1182	58.18	0.818	42.2	89.6
	229.0	229.4	231.6	4.252	4.312	4.362	1531	1111	59.47	0.786	38.3	89.2
BDT OZ-FT	229.0	229.4	231.6	4.355	4.415	4.467	1565	1080	59.87	0.770	36.7	89.0
	229.0	229.4	231.6	4.503	4.566	4.620	1613	1034	60.37	0.743	34.4	88.8
	229.0	229.4	231.6	4.744	4.808	4.866	1690	953	60.87	0.690	30.5	88.3
	229.0	229.4	231.7	4.977	5.045	5.106	1761	865	61.07	0.629	26.6	87.6
	228.9	229.4	231.7	5.196	5.268	5.337	1828	771	60.89	0.559	22.8	87.1
	228.8	229.4	231.8	5.401	5.479	5.552	1889	675	60.41	0.486	19.2	86.6
	228.8	229.4	231.8	5.594	5.675	5.747	1945	576	59.76	0.410	15.7	86.1
	228.9	229.3	231.8	5.770	5.857	5.928	1994	472	58.76	0.330	12.4	85.6
	228.9	229.3	231.8	5.941	6.029	6.099	2041	364	57.94	0.251	9.2	85.1
	228.9	229.2	231.8	6.101	6.190	6.259	2084	251	56.77	0.170	6.1	84.6
	228.9	229.3	231.8	6.243	6.334	6.395	2119	136	55.96	0.091	3.2	84.1
	228.9	229.3	231.8	6.368	6.460	6.533	2150	22	56.45	0.015	0.5	83.6

DRAWING NO. PAGE 3 of 8 REV.
3N841BG -

Performance Data



3N841BG REV. -



Dayton

Curve Descriptions:
Motor(1) Test 8 Run 230V 60 Hz 4P

- SPEED vs WATTS
- SPEED vs TORQUE
- △ SPEED vs Ia

Motor Ratings:
(1) P048CRP0144 3N841BG

DRAWING NO. PAGE 4 of 8 REV.
3N841BG -

Dayton Electric Mfg. Co. Lake Forest, IL 60045 USA

Performance Data



3N841BG REV.
-

Dayton Manufacturing Company

Motor Description

Model: P048CRP0144 3N841BG
 Motor ID:
 Poles: 4
 Volts: 208-230/460
 Frequency: 60
 HP: 1/4
 Speed: 1725
 Phase: 3
 Protector: NONE

Test Conditions

Test Type: Start Run Cap: 0
 Test Number: 12 Start Cap: 0µfd
 Poles: 4 Environment:
 Volts: 460 Tested: 10/20/2003 10:54:08 AM
 Hz: 60 Tested By: Clausner, Chris
 Rotation:
 Special Cond: Gear Ratio: 1:1
 Speed Conn: Bearing Friction: -0.02 Oz-Ft
 TestBoard: Windage Torque: -0.30 Oz-Ft
 Amps Performance Fixture #4

Special Points	Vab (V)	Vbc (V)	Vca (V)	Ia (A)	Ib (A)	Ic (A)	Watts	RPM	Tq (Oz-ft)	HP	Eff (%)	PF (%)
	458.4	459.4	462.3	3.137	3.171	3.199	2122	76	55.93	0.050	1.8	84.0
	458.3	459.4	462.3	3.139	3.171	3.205	2123	65	55.87	0.043	1.5	84.0
PUT OZ-FT	458.3	459.4	462.3	3.088	3.122	3.149	2097	149	55.42	0.099	3.5	84.4
	458.4	459.4	462.3	3.062	3.094	3.124	2084	189	55.55	0.125	4.5	84.6
	458.3	459.4	462.2	2.957	2.987	3.019	2029	341	56.88	0.231	8.5	85.2
	458.3	459.4	462.2	2.836	2.865	2.897	1963	489	57.91	0.337	12.8	86.0
	458.3	459.4	462.3	2.712	2.740	2.770	1892	622	58.86	0.436	17.2	86.6
	458.3	459.5	462.2	2.590	2.616	2.645	1819	739	59.35	0.522	21.4	87.3
	458.3	459.5	462.2	2.470	2.495	2.519	1745	842	59.53	0.597	25.5	87.8
	458.3	459.4	462.2	2.348	2.371	2.400	1670	937	59.34	0.662	29.6	88.3
	458.3	459.5	462.2	2.223	2.246	2.273	1590	1022	58.77	0.715	33.6	88.8
	458.3	459.4	462.2	2.100	2.123	2.147	1509	1100	57.88	0.758	37.5	89.2
	458.3	459.4	462.2	1.978	2.000	2.021	1427	1170	56.65	0.789	41.2	89.6
	458.3	459.5	462.2	1.855	1.877	1.894	1343	1234	55.10	0.810	45.0	89.9
	458.3	459.4	462.2	1.733	1.754	1.769	1258	1294	53.19	0.819	48.6	90.1
	458.3	459.4	462.2	1.616	1.637	1.649	1174	1347	51.06	0.819	52.0	90.2
	458.4	459.4	462.2	1.503	1.524	1.532	1092	1395	48.70	0.809	55.2	90.2
	458.3	459.5	462.2	1.392	1.413	1.419	1010	1439	46.14	0.790	58.4	90.0
	458.4	459.4	462.2	1.286	1.307	1.310	930	1479	43.37	0.763	61.2	89.7
	458.3	459.5	462.2	1.184	1.205	1.205	853	1516	40.48	0.730	63.9	89.3
	458.3	459.4	462.2	1.087	1.109	1.106	777	1550	37.48	0.691	66.4	88.7
	458.3	459.4	462.3	0.994	1.015	1.010	703	1581	34.35	0.646	68.6	87.7
	458.3	459.5	462.2	0.907	0.928	0.920	631	1610	31.16	0.597	70.6	86.3
	458.3	459.5	462.2	0.826	0.846	0.835	563	1635	27.94	0.544	72.1	84.5
	458.2	459.5	462.4	0.748	0.770	0.757	498	1659	24.77	0.489	73.4	82.3
	458.3	459.5	462.2	0.679	0.699	0.682	431	1683	21.38	0.428	74.1	78.9
	458.3	459.5	462.2	0.613	0.632	0.613	366	1704	17.93	0.364	74.1	74.3
	458.2	459.5	462.2	0.557	0.575	0.552	305	1725	14.55	0.299	73.1	68.2
	458.2	459.5	462.2	0.506	0.522	0.496	242	1745	11.03	0.229	70.5	59.9
	458.3	459.5	462.2	0.466	0.481	0.450	180	1765	7.44	0.156	64.6	48.6
	458.2	459.6	462.2	0.436	0.450	0.413	115	1785	3.64	0.077	50.1	33.3
	458.1	459.6	462.2	0.426	0.439	0.396	68	1799	0.85	0.018	19.8	20.4

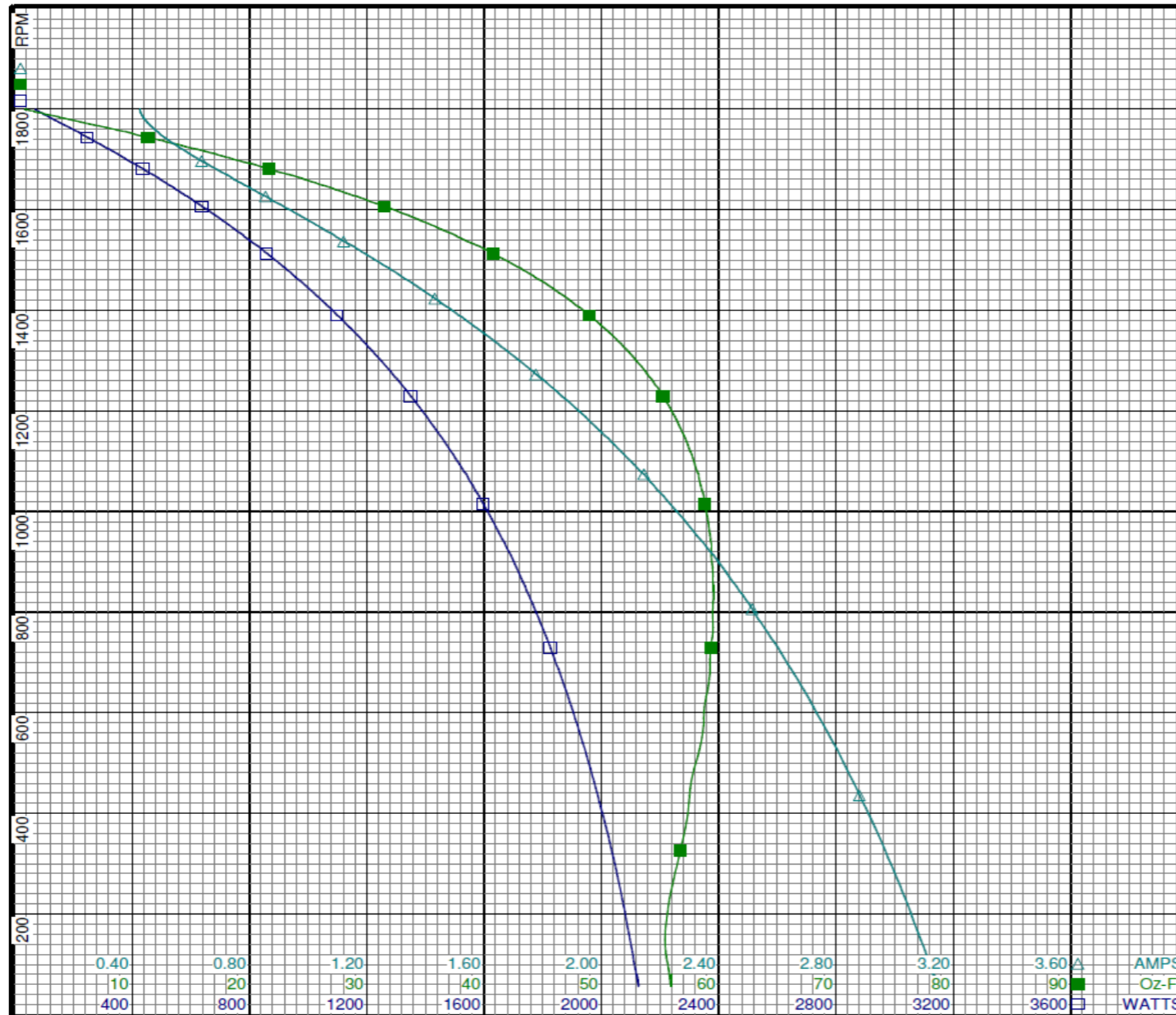
DRAWING NO. PAGE 5 of 8 REV.
3N841BG -

Dayton Electric Mfg. Co. Lake Forest, IL 60045 USA

Performance Data



3N841BG REV.
-



Dayton

Curve Descriptions:
Motor(1) Test 12 Start 460V 60 Hz 4P

- SPEED vs WATTS
- SPEED vs TORQUE
- △ SPEED vs Ia

Motor Ratings:
(1) P048CRP0144 3N841BG

DRAWING NO.	PAGE 6 of 8	REV.
3N841BG		-

Dayton Electric Mfg. Co. Lake Forest, IL 60045 USA

Performance Data



3N841BG REV. -

Dayton Manufacturing Company

Motor Description

Model: P048CRP0144 3N841BG
 Motor ID:
 Poles: 4
 Volts: 208-230/460
 Frequency: 60
 HP: 1/4
 Speed: 1725
 Phase: 3
 Protector: NONE

Test Conditions

Test Type: Run Run Cap: 0
 Test Number: 9 Start Cap: 0µfd
 Poles: 4 Environment:
 Volts: 460 Tested: 10/20/2003 10:52:36 AM
 Hz: 60 Tested By: Clausner, Chris
 Rotation:
 Special Cond:
 Speed Conn:
 TestBoard: Amps Performance Fixture #4
 Bearing Friction: -0.05 Oz-Ft
 Windage Torque: -0.30 Oz-Ft

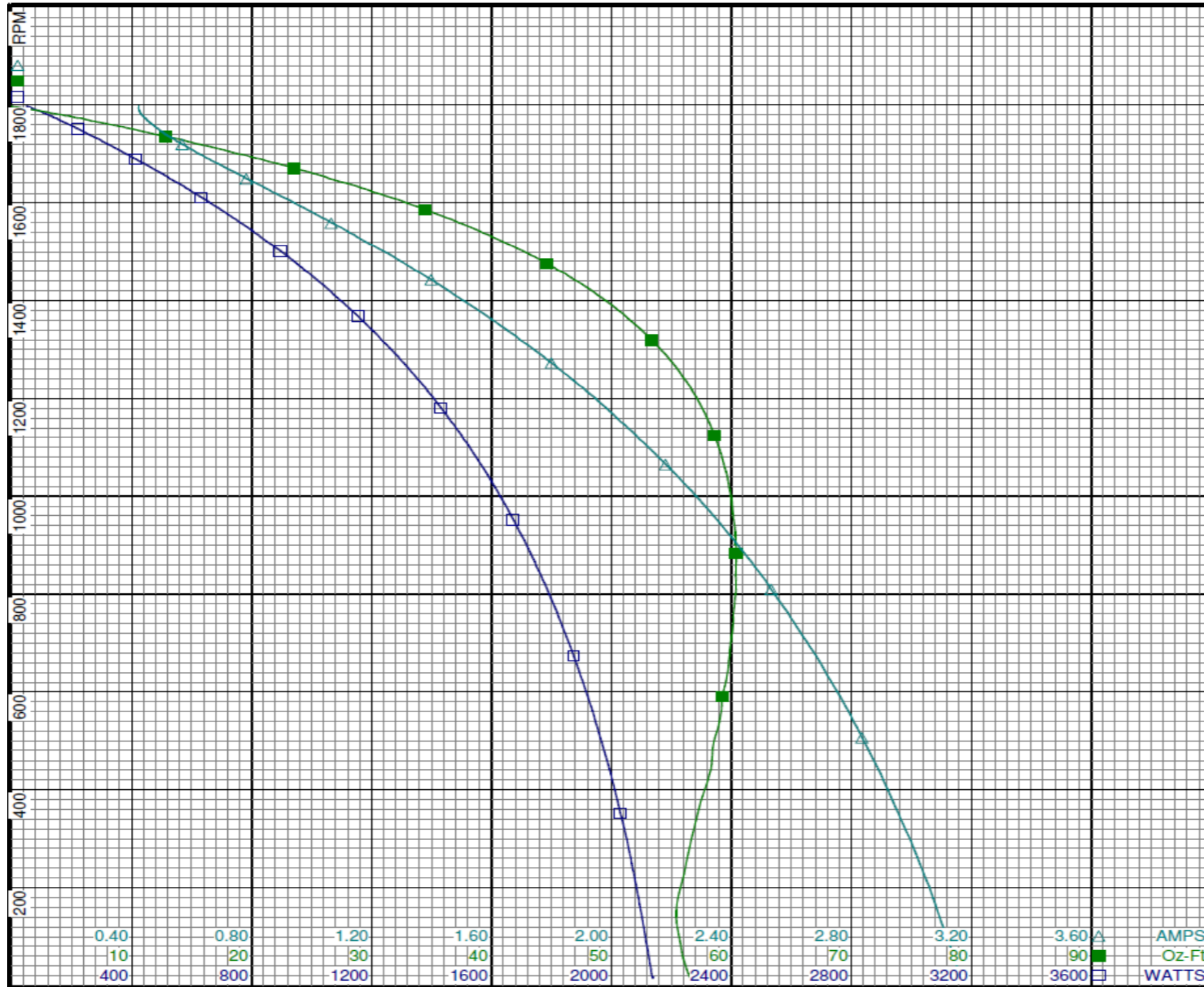
Special Points	Vab (V)	Vbc (V)	Vca (V)	Ia (A)	Ib (A)	Ic (A)	Watts	RPM	Tq (Oz-ft)	HP	Eff (%)	PF (%)
3 OZ-FT	458.4	459.5	462.2	0.423	0.436	0.387	48	1798	0.00	0.000	0.0	14.4
	458.4	459.5	462.2	0.428	0.445	0.402	102	1785	3.00	0.064	46.7	30.0
6.1 OZ-FT	458.4	459.5	462.2	0.429	0.446	0.403	107	1783	3.28	0.070	48.7	31.4
	458.3	459.5	462.2	0.448	0.464	0.428	154	1770	6.10	0.129	62.3	43.3
9.1 OZ-FT	458.4	459.5	462.2	0.454	0.469	0.434	163	1767	6.63	0.140	63.7	45.4
	458.4	459.5	462.2	0.478	0.494	0.462	205	1756	9.10	0.190	69.0	53.9
12.2 OZ-FT	458.4	459.5	462.2	0.488	0.505	0.474	221	1751	10.00	0.208	70.3	56.8
	458.4	459.5	462.2	0.516	0.534	0.506	260	1738	12.20	0.252	72.5	62.9
0.288 HP	458.4	459.4	462.2	0.534	0.553	0.527	283	1731	13.53	0.279	73.6	65.9
	458.4	459.4	462.2	0.541	0.560	0.534	290	1730	13.96	0.288	73.9	66.9
15.2 OZ-FT	458.4	459.4	462.2	0.592	0.612	0.589	346	1711	17.06	0.348	74.9	72.7
	458.4	459.4	462.2	0.657	0.679	0.659	413	1689	20.69	0.416	75.2	77.9
	458.4	459.4	462.2	0.733	0.755	0.739	484	1665	24.34	0.483	74.4	81.8
	458.4	459.4	462.2	0.816	0.839	0.825	557	1640	27.95	0.546	73.1	84.6
	458.4	459.4	462.2	0.906	0.929	0.919	633	1611	31.57	0.605	71.3	86.5
	458.4	459.5	462.1	1.004	1.026	1.020	713	1579	35.15	0.661	69.2	88.0
	458.4	459.4	462.2	1.108	1.130	1.127	795	1545	38.64	0.711	66.7	89.0
	458.4	459.5	462.1	1.237	1.259	1.259	895	1502	42.59	0.761	63.4	89.8
	458.4	459.5	462.2	1.332	1.354	1.357	967	1467	45.20	0.789	60.9	90.1
	458.4	459.4	462.2	1.448	1.470	1.476	1054	1423	48.15	0.816	57.8	90.3
	458.4	459.4	462.2	1.585	1.606	1.617	1153	1369	51.15	0.834	53.9	90.3
	458.4	459.4	462.2	1.721	1.744	1.757	1251	1309	53.76	0.838	49.9	90.2
	458.4	459.3	462.3	1.853	1.876	1.892	1343	1247	55.86	0.829	46.0	90.0
	458.4	459.3	462.3	1.980	2.003	2.024	1431	1181	57.52	0.809	42.2	89.7
	458.3	459.5	462.3	2.107	2.130	2.155	1516	1110	58.81	0.777	38.2	89.3
BDT OZ-FT	458.3	459.4	462.2	2.144	2.168	2.193	1540	1087	59.11	0.765	37.1	89.2
	458.4	459.5	462.2	2.230	2.252	2.280	1596	1034	59.69	0.735	34.3	88.9
	458.5	459.5	462.0	2.351	2.373	2.402	1672	952	60.18	0.682	30.4	88.4
	458.5	459.5	462.0	2.466	2.489	2.520	1744	866	60.38	0.623	26.6	87.9
	458.4	459.6	462.0	2.575	2.601	2.628	1812	772	60.22	0.553	22.8	87.4
	458.5	459.6	462.0	2.682	2.708	2.735	1874	673	59.82	0.480	19.1	86.8
	458.5	459.5	462.0	2.781	2.808	2.836	1931	570	59.17	0.402	15.5	86.3
	458.5	459.5	462.0	2.872	2.900	2.930	1983	463	58.38	0.322	12.1	85.8
	458.5	459.5	462.0	2.956	2.985	3.016	2029	353	57.18	0.240	8.8	85.3
	458.5	459.5	462.0	3.035	3.065	3.096	2071	238	56.12	0.159	5.7	84.8
	458.5	459.5	462.0	3.108	3.137	3.171	2108	116	55.50	0.076	2.7	84.3
	458.5	459.5	462.0	3.169	3.200	3.226	2138	14	56.63	0.010	0.3	83.9

DRAWING NO. PAGE 7 of 8 REV.
3N841BG -

Performance Data



3N841BG REV. -



Curve Descriptions:
Motor(1) Test 9 Run 460V 60 Hz 4P

- SPEED vs WATTS
- SPEED vs TORQUE
- △ SPEED vs Ia

Motor Ratings:
(1) P048CRP0144 3N841BG

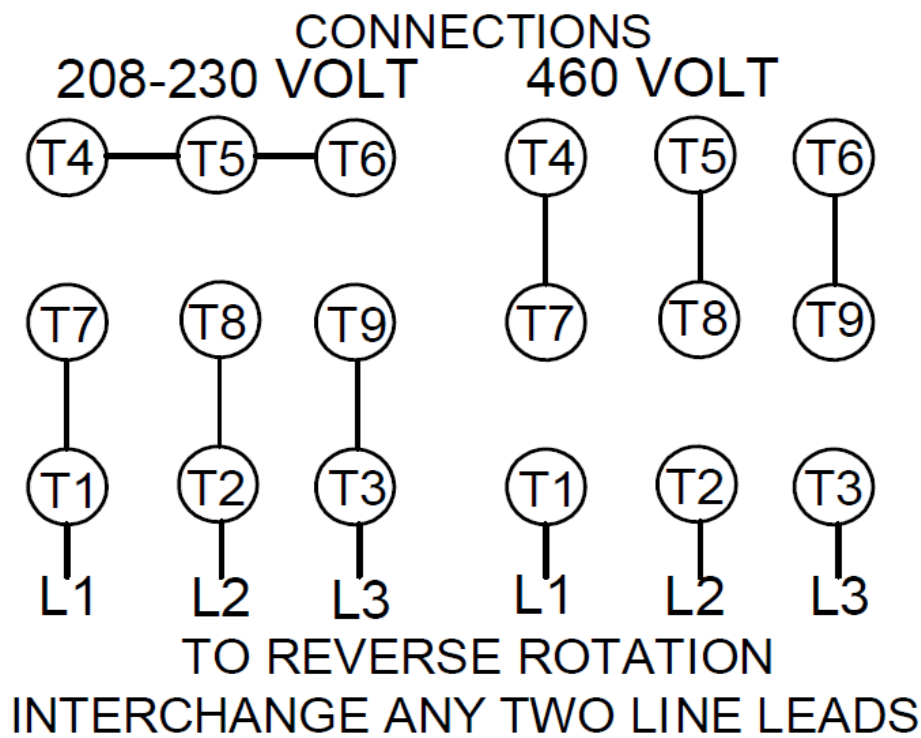
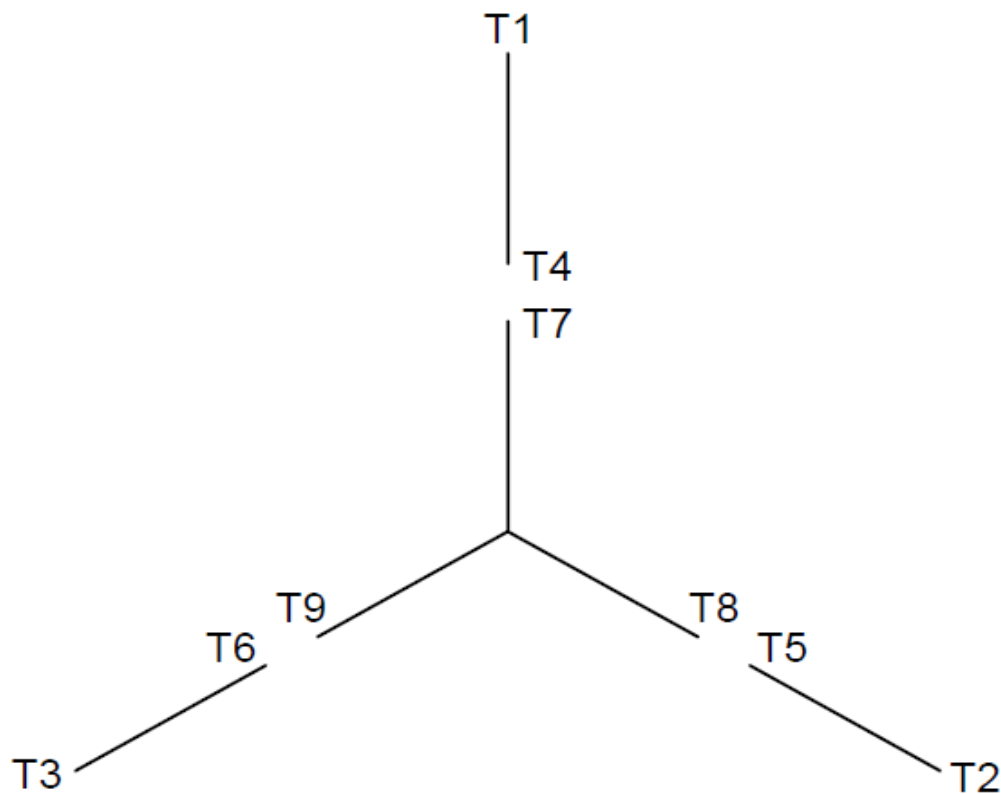
DRAWING NO.	PAGE 8 of 8	REV.
	3N841BG	-

Dayton Electric Mfg. Co. Lake Forest, IL 60045 USA

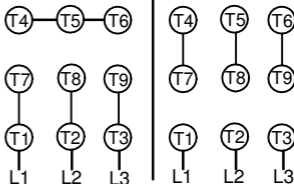
3N841BG

REV.
0

Motor Wiring Diagram 9 Lead, Dual Voltage (WYE Conn.)



DRAWING NO.	PAGE 1 of 1	REV.
3N841BG		0

Dayton[®]**INDUSTRIAL MOTOR****HP:** 1/4**VOLTS:** 208-230/460**AMPS:** 1.1-1.1/0.57**RPM:** 1725 & 1425**DUTY:** CONT**SF:** 1.15**KVA CODE:** M**ENCL:** TEFC**THERMALLY PROTECTED:** NONEMFG. NO. PROT. CODE **AVG. F.L.****MTR REF:** P48CRP-0144**FOR 50HZ FLA 1.2-1.4/0.71 & SFA 1.3-1.4/0.73****PH:** 3**HZ:** 60 & 50**FR:** 42CZ**INS CL:** B**AMB:** 40°C**SFA:** 1.3-1.3/0.65Part No **3N841BG****Disconnect Power Before Making
Any Electrical Connections or Changes****CONNECTIONS****208-230 VOLT****460 VOLT****TO REVERSE ROTATION****INTERCHANGE ANY TWO LINE LEADS****RI**[®]
E47479**SP**[®]
258501

Mfd for Dayton Electric Mfg. Co., Lake Forest, IL 60045 USA

Made in Mexico