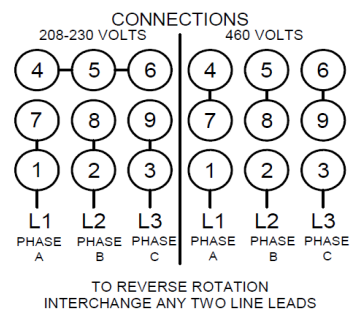
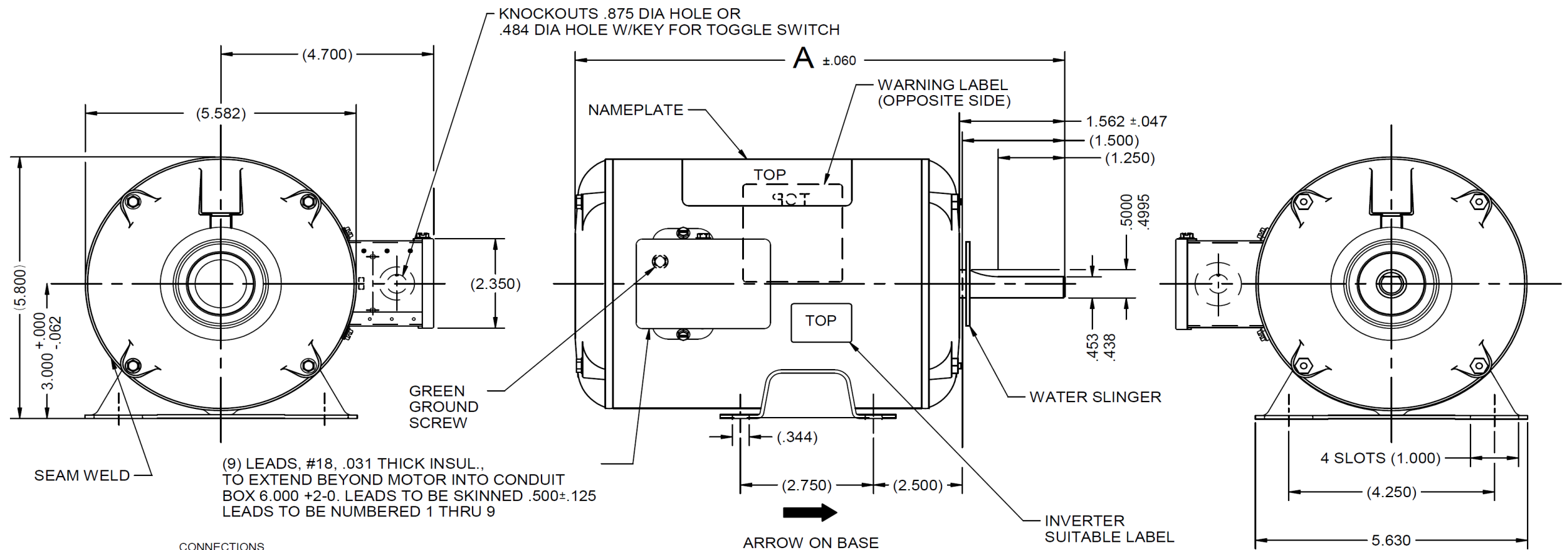


Dimensional Drawing



3N349BH		REV.
		-

VAR	MODEL	CUST. PT. NO.	A	B	C	D	HP	VOLTS	SF	AMPS	HZ	RPM	CONN VOLTS	PROTECTOR	DESCRIPTION / REMARKS
001	P55BRA-1630	3N349BH	9.56	-----	-----	-----	1/4 & 1/6	208-230/460 & 190/380	1.0	1.1-1.175 & 1.075	60&50	1725&1425	-----	NONE	48, TENV 2:1 CONSTANT TORQUE



DRAWING NO.	PAGE 1 of 1	REV.
	3N349BH	-

Dayton Electric Mfg. Co. Lake Forest, IL 60045 USA

Performance Data



3N349BH

REV.
-

THREE PHASE MOTOR PERFORMANCE

HP:	1/4 & 1/6	1/4	1/4	1/4	1/6	1/6
Poles:	4					
Volts:	208-230/460	460	230	208	380	190
HZ:	60 & 50	60	60	60	50	50
Service Factor:	1.00					
Efficiency (%):	Full Load	65.90	68.1	67.5	59.8	63.5
	Service Factor	65.90	68.1	67.5	59.8	63.5
	3/4	61.10	63.7	63.7	54.6	58.6
	1/2	52.80	55.5	56.6	45.8	50.4
	1/4	36.70	39.5	41.2	31.0	34.5
Power Factor (%):	Full Load	71.50	70.3	75.8	69.0	66.6
	Service Factor	71.50	70.3	75.8	69.0	66.6
	3/4	64.40	63.3	69.3	62.2	59.5
	1/2	55.50	53.6	60.7	53.8	50.9
	1/4	44.10	41.1	47.4	42.9	39.8
Amps:	Full Load	0.50	1.0	1.0	0.5	0.9
	Service Factor	0.50	1.0	1.0	0.5	0.9
	3/4	0.45	0.9	0.9	0.4	0.8
	1/2	0.40	0.8	0.8	0.4	0.7
	1/4	0.36	0.72	0.66	0.35	0.69
	No Load	0.34	0.672	0.62	0.35	0.7
	Locked Rotor	2.95	5.92	5.26	2.6	5.3
NEMA Code Letter:	L					
NEMA Design Letter:						
Full Load RPM:	1733	1735	1717	1442	1445	
NEMA Nominal Efficiency (%):						
Guaranteed Efficiency (%):	68.0					
Max KVAR:						
Ambient (°C):	40					
Altitude (FASL):						
Full Load Torque	Lb.Ft. / Oz.Ft. (Circle One)					
		12.12	12.10	12.23	9.70	9.68
Torques: % Full-Load	Breakdown	49.23	49.52	39.18	44.18	44.65
	Locked Rotor	40.03	39.45	31.43	38.34	38.17
	Pull-Up	39.76	38.94	30.67	37.47	37.36
	Service Factor	12.12	12.10	12.23	9.70	9.68
Temperature Rise:	Full Load		46.40	45.70	37.50	
	Service Factor		46.40	45.70	37.50	
Winding Material:	Cu					
Notes:						

DRAWING NO. PAGE 1 of 1 REV.
3N349BH -

Dayton Electric Mfg. Co. Lake Forest, IL 60045 USA

Performance Data



3N349BH REV.
-

Dayton Manufacturing Company

Motor Description

Model: P055BRA163001 3N349BH
 Motor ID: 1
 Poles: 4
 Volts: 208-230/460
 Frequency: 60&50
 HP: 1/4
 Speed: 1725&1425
 Phase: 3
 Protector: NONE

Test Conditions

Test Type: Start Run Cap: 0
 Test Number: 5 Start Cap: 0µfd
 Poles: 4 Environment: 20.5 Deg C 15 % RH 1002 hPa
 Volts: 230 Tested: 12/7/2016 11:59:55 AM
 Hz: 60 Tested By: Sharp, Gerald
 Rotation: CCW Gear Ratio: 1:1
 Special Cond: Bearing Friction: -0.74 Oz-Ft
 Speed Conn: Windage Torque: -2.55 Oz-Ft
 TestBoard: Amtps Performance Fixture #4

Special Points	Vab (V)	Vbc (V)	Vca (V)	Ia (A)	Ib (A)	Ic (A)	Watts	RPM	Tq (Oz-ft)	HP	Eff (%)	PF (%)
	228.7	230.8	230.5	5.911	5.851	5.944	1563.9	41	39.45	0.019	0.9	66.5
	228.7	230.7	230.6	5.902	5.846	5.947	1563.2	45	39.13	0.021	1.0	66.5
PUT OZ-FT	228.7	230.8	230.6	5.850	5.778	5.883	1559.5	125	38.94	0.058	2.8	67.1
	228.7	230.8	230.5	5.804	5.736	5.833	1554.7	184	39.23	0.086	4.1	67.4
	228.6	230.8	230.5	5.669	5.601	5.704	1545.2	338	41.08	0.166	8.0	68.6
	228.7	230.8	230.5	5.515	5.447	5.549	1532.1	487	42.24	0.245	11.9	69.9
	228.7	230.8	230.5	5.354	5.282	5.385	1514.2	618	43.56	0.321	15.8	71.2
	228.7	230.8	230.5	5.183	5.111	5.209	1492.9	736	45.07	0.395	19.7	72.5
	228.7	230.8	230.5	4.999	4.929	5.030	1466.5	840	46.12	0.461	23.5	73.8
	228.7	230.8	230.5	4.811	4.739	4.838	1435.2	936	47.19	0.526	27.3	75.1
	228.7	230.8	230.5	4.606	4.540	4.632	1400.4	1024	47.89	0.584	31.1	76.5
	228.8	230.8	230.5	4.401	4.330	4.422	1360.1	1102	48.43	0.636	34.9	77.9
	228.7	230.9	230.4	4.185	4.114	4.205	1314.5	1174	48.63	0.680	38.6	79.2
	228.8	230.7	230.5	3.959	3.892	3.977	1261.7	1239	48.42	0.714	42.2	80.3
	228.7	230.7	230.5	3.736	3.671	3.757	1206.9	1297	47.82	0.738	45.6	81.4
	228.8	230.8	230.5	3.514	3.448	3.530	1148.2	1350	46.86	0.753	48.9	82.4
	228.7	230.8	230.5	3.285	3.218	3.300	1084.4	1398	45.55	0.758	52.2	83.3
	228.7	230.9	230.4	3.064	2.996	3.077	1019.5	1442	43.80	0.752	55.0	84.0
	228.7	230.9	230.4	2.846	2.776	2.857	952.6	1481	41.88	0.739	57.8	84.6
	228.7	230.9	230.4	2.634	2.568	2.647	886.3	1516	39.57	0.714	60.1	85.0
	228.7	230.8	230.5	2.424	2.361	2.436	816.1	1548	37.22	0.686	62.7	85.1
	228.7	230.9	230.5	2.221	2.159	2.234	748.5	1579	34.55	0.649	64.7	85.2
	228.7	230.9	230.5	2.026	1.965	2.038	680.5	1606	31.75	0.607	66.5	85.0
	228.6	230.9	230.5	1.837	1.780	1.853	612.9	1631	28.73	0.558	67.9	84.4
	228.7	230.9	230.4	1.655	1.598	1.670	545.1	1654	25.57	0.503	68.9	83.4
	228.6	230.9	230.5	1.476	1.424	1.494	477.2	1676	22.31	0.445	69.6	81.8
	228.6	231.0	230.4	1.309	1.261	1.329	409.6	1696	18.92	0.382	69.6	79.1
	228.6	230.9	230.5	1.152	1.108	1.177	345.4	1717	15.53	0.318	68.6	75.7
	228.6	231.0	230.4	0.995	0.955	1.021	276.2	1736	11.81	0.244	65.9	70.0
	228.6	231.0	230.4	0.863	0.833	0.895	209.2	1755	8.06	0.168	60.1	60.8
	228.7	230.9	230.4	0.740	0.721	0.776	131.9	1774	3.54	0.075	42.4	44.4
	228.6	230.9	230.5	0.670	0.663	0.704	69.1	1790	0.00	0.000	0.0	25.6

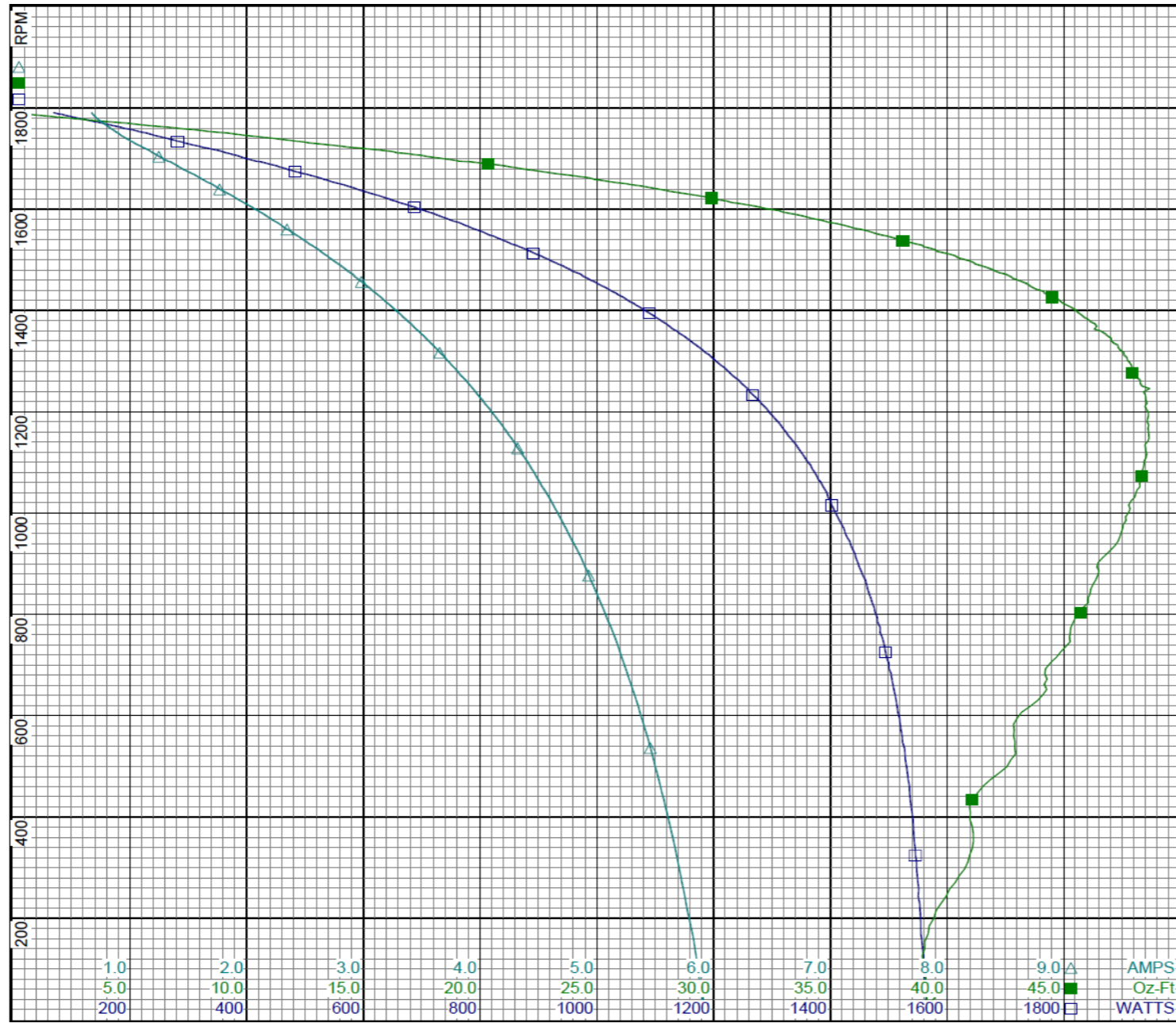
DRAWING NO. PAGE 1 of 8 REV.
3N349BH -

Dayton Electric Mfg. Co. Lake Forest, IL 60045 USA

Performance Data



3N349BH REV. -



Dayton

Curve Descriptions:
 Motor(1) Test 5 Start 230V 60 Hz 4P
 CCW

- SPEED vs WATTS
- SPEED vs TORQUE
- △ SPEED vs Ia

Motor Ratings:
 (1) P055BRA163001 3N349BH

DRAWING NO.	PAGE 2 of 8	REV.
	3N349BH	-

Dayton Electric Mfg. Co. Lake Forest, IL 60045 USA

Performance Data



3N349BH	REV. -
----------------	------------------

Dayton Manufacturing Company

Motor Description

Model: P055BRA163001 3N349BH
Motor ID: 1
Poles: 4
Volts: 208-230/460
Frequency: 60&50
HP: 1/4
Speed: 1725&1425
Phase: 3
Protector: NONE

Test Conditions

Test Type: Run
Test Number: 6
Poles: 4
Volts: 230
Hz: 60
Rotation: CCW
Special Cond:
Speed Conn:
TestBoard: Amtps Performance Fixture #4
Run Cap: 0
Start Cap: 0µfd
Environment: 20.3 Deg C 16 % RH 1003 hPa
Tested: 12/7/2016 9:36:31 AM
Tested By: Sharp, Gerald
Gear Ratio: 1:1
Bearing Friction: -0.85 Oz-Ft
Windage Torque: -2.62 Oz-Ft

Special Points	Vab (V)	Vbc (V)	Vca (V)	Ia (A)	Ib (A)	Ic (A)	Watts	RPM	Tq (Oz-ft)	HP	Eff (%)	PF (%)
	229.0	230.6	230.4	0.669	0.665	0.691	64.7	1786	0.00	0.000	0.0	24.1
	228.9	230.7	230.4	0.717	0.703	0.746	120.4	1774	3.09	0.065	40.4	41.9
	229.0	230.6	230.4	0.800	0.779	0.825	176.9	1760	6.49	0.136	57.4	55.4
	228.9	230.7	230.4	0.893	0.866	0.916	231.8	1746	9.70	0.202	64.9	65.2
0.25 HP	229.0	230.7	230.4	0.980	0.951	1.001	273.8	1735	12.10	0.250	68.1	70.3
12.2 OZ-FT	229.0	230.7	230.3	0.985	0.955	1.005	275.7	1735	12.20	0.252	68.2	70.5
	229.0	230.6	230.4	1.032	0.999	1.050	295.6	1729	13.26	0.273	68.9	72.3
1725 RPM	229.0	230.6	230.4	1.069	1.034	1.085	310.6	1725	14.15	0.291	69.8	73.4
	229.0	230.6	230.3	1.174	1.135	1.187	356.8	1710	16.71	0.340	71.1	76.9
	229.1	230.5	230.4	1.337	1.303	1.350	425.7	1692	20.27	0.408	71.5	80.3
	228.9	230.6	230.5	1.506	1.466	1.524	494.9	1670	23.73	0.472	71.1	82.9
	228.8	230.6	230.6	1.687	1.646	1.707	563.0	1647	27.08	0.531	70.4	84.1
	228.8	230.6	230.6	1.882	1.836	1.899	633.7	1623	30.34	0.586	69.0	85.0
	228.8	230.6	230.6	2.090	2.043	2.109	708.7	1596	33.56	0.637	67.1	85.5
	228.8	230.6	230.6	2.306	2.259	2.323	781.5	1565	36.62	0.682	65.1	85.4
	228.8	230.5	230.7	2.523	2.478	2.544	855.1	1532	39.47	0.720	62.8	85.3
	228.8	230.5	230.7	2.747	2.702	2.771	928.2	1496	41.93	0.747	60.0	85.0
	228.8	230.5	230.7	3.013	2.963	3.034	1008.7	1451	44.36	0.766	56.7	84.3
	228.8	230.5	230.7	3.199	3.149	3.221	1064.8	1416	45.81	0.772	54.1	83.8
	228.8	230.5	230.7	3.423	3.373	3.448	1128.4	1371	47.27	0.771	51.0	83.0
	228.8	230.4	230.8	3.647	3.600	3.677	1189.5	1319	48.45	0.761	47.7	82.0
	228.8	230.4	230.8	3.871	3.821	3.898	1245.3	1264	49.17	0.740	44.3	80.9
	228.7	230.4	230.9	4.082	4.034	4.114	1296.8	1205	49.43	0.709	40.8	79.8
BDT OZ-FT	228.8	230.4	230.8	4.178	4.129	4.208	1318.5	1178	49.52	0.694	39.3	79.3
	228.8	230.5	230.7	4.289	4.238	4.319	1342.3	1143	49.44	0.672	37.4	78.7
	228.7	230.5	230.7	4.477	4.426	4.510	1381.8	1077	49.10	0.630	34.0	77.6
	228.8	230.5	230.7	4.655	4.605	4.688	1411.4	1006	48.51	0.581	30.7	76.2
	228.7	230.6	230.7	4.822	4.769	4.855	1441.9	933	47.69	0.530	27.4	75.2
	228.7	230.6	230.7	4.978	4.922	5.013	1465.9	856	46.93	0.478	24.3	74.0
	228.7	230.5	230.7	5.128	5.073	5.159	1488.5	772	45.85	0.421	21.1	73.0
	228.7	230.7	230.7	5.265	5.205	5.298	1505.4	684	44.72	0.364	18.1	71.9
	228.7	230.6	230.7	5.389	5.334	5.422	1520.6	592	43.50	0.307	15.0	70.9
	228.6	230.6	230.8	5.507	5.452	5.547	1533.7	495	42.69	0.252	12.2	70.0
	228.6	230.7	230.7	5.617	5.561	5.657	1544.7	392	41.39	0.193	9.3	69.1
	228.7	230.6	230.7	5.717	5.663	5.755	1549.9	281	39.87	0.133	6.4	68.1
	228.7	230.6	230.7	5.805	5.747	5.848	1556.1	172	39.56	0.081	3.9	67.3

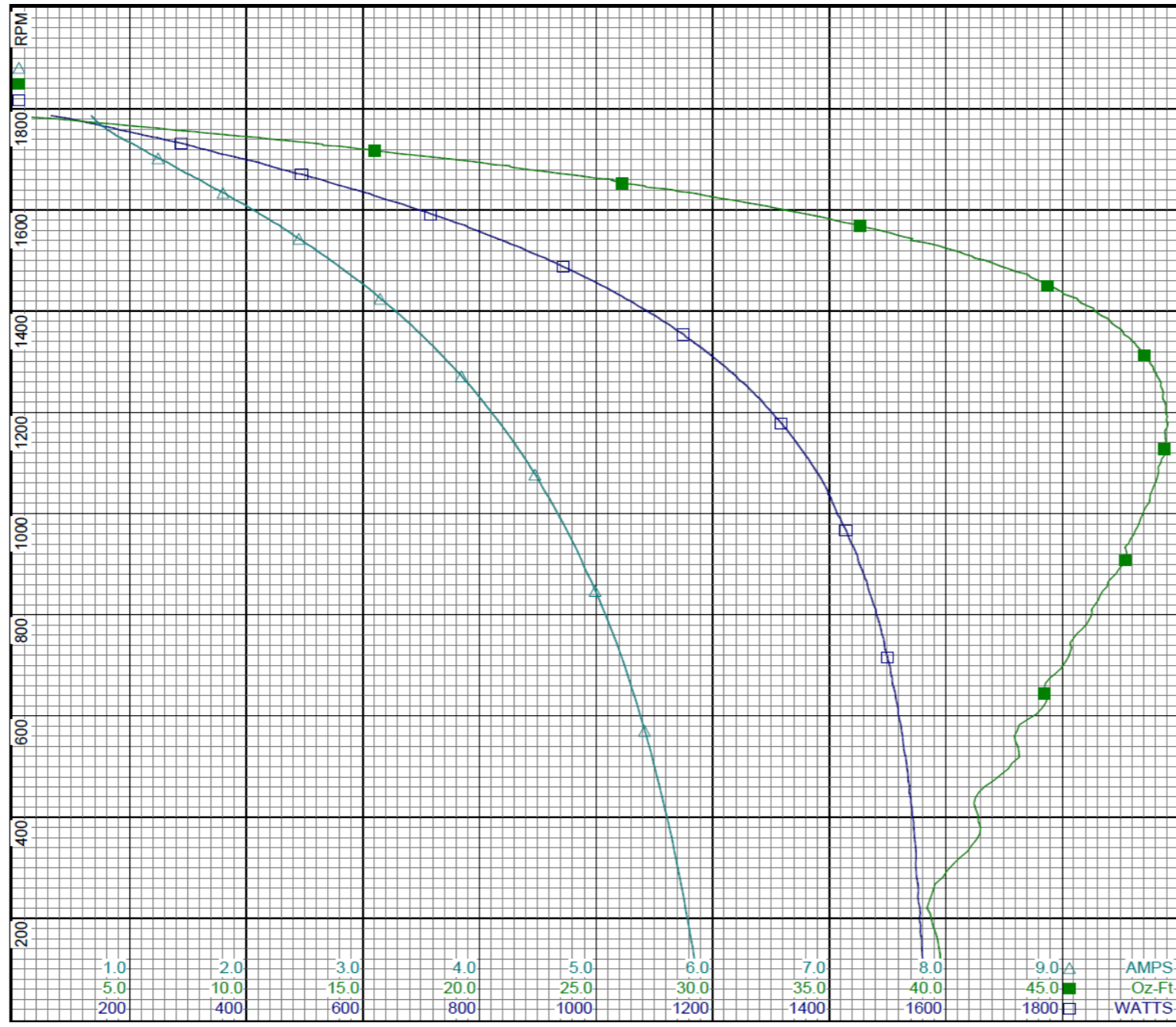
DRAWING NO.	PAGE 3 of 8	REV.
	3N349BH	-

Dayton Electric Mfg. Co. Lake Forest, IL 60045 USA

Performance Data



3N349BH REV. -



Dayton

Curve Descriptions:
 Motor(1) Test 6 Run 230V 60 Hz 4P
 CCW

- SPEED vs WATTS
- SPEED vs TORQUE
- △ SPEED vs Ia

Motor Ratings:
 (1) P055BRA163001 3N349BH

DRAWING NO.	PAGE 4 of 8	REV.
	3N349BH	-

Dayton Electric Mfg. Co. Lake Forest, IL 60045 USA

Performance Data



3N349BH	REV. -
----------------	-----------

Dayton Manufacturing Company

Motor Description

Model: P055BRA163001 3N349BH
 Motor ID: 1
 Poles: 4
 Volts: 208-230/460
 Frequency: 60&50
 HP: 1/4
 Speed: 1725&1425
 Phase: 3
 Protector: NONE

Test Conditions

Test Type: Start
 Test Number: 9
 Poles: 4
 Volts: 460
 Hz: 60
 Rotation: CCW
 Special Cond:
 Speed Conn:
 TestBoard: Amps Performance Fixture #4
 Run Cap: 0
 Start Cap: 0µfd
 Environment: 20.5 Deg C 28 % RH 994 hPa
 Tested: 12/6/2016 3:10:21 PM
 Tested By: Sharp, Gerald
 Gear Ratio: 1:1
 Bearing Friction: -0.84 Oz-Ft
 Windage Torque: -2.90 Oz-Ft

Special Points	Vab (V)	Vbc (V)	Vca (V)	Ia (A)	Ib (A)	Ic (A)	Watts	RPM	Tq (Oz-ft)	HP	Eff (%)	PF (%)
	457.7	461.2	461.0	2.954	2.927	2.958	1564.2	39	40.03	0.018	0.9	66.6
	457.8	461.1	461.1	2.950	2.924	2.957	1563.3	44	40.08	0.021	1.0	66.7
	457.8	461.2	461.1	2.900	2.870	2.900	1555.6	185	40.27	0.089	4.3	67.6
PUT OZ-FT	457.7	461.2	461.1	2.851	2.821	2.855	1548.7	297	39.76	0.141	6.8	68.4
	457.7	461.2	461.1	2.832	2.802	2.836	1545.3	340	39.98	0.162	7.8	68.7
	457.8	461.1	461.1	2.757	2.727	2.760	1532.4	485	41.88	0.242	11.8	70.0
	457.7	461.2	461.1	2.675	2.643	2.678	1515.0	618	43.51	0.320	15.8	71.3
	457.7	461.2	461.0	2.587	2.558	2.591	1493.3	735	44.61	0.390	19.5	72.7
	457.7	461.2	461.1	2.498	2.466	2.500	1467.0	841	46.04	0.461	23.4	74.0
	457.7	461.3	461.0	2.400	2.369	2.403	1435.4	937	46.65	0.520	27.0	75.4
	457.7	461.2	461.1	2.302	2.269	2.303	1399.7	1023	47.72	0.581	31.0	76.7
	457.7	461.3	461.0	2.201	2.167	2.201	1359.6	1101	47.82	0.627	34.4	77.9
	457.8	461.2	461.0	2.092	2.058	2.092	1312.7	1173	48.33	0.675	38.3	79.2
	457.7	461.2	461.1	1.980	1.948	1.980	1261.0	1238	48.13	0.710	42.0	80.4
	457.7	461.2	461.1	1.868	1.837	1.869	1205.8	1297	47.57	0.734	45.4	81.5
	457.7	461.3	461.0	1.755	1.724	1.755	1146.5	1350	46.50	0.747	48.6	82.5
	457.7	461.2	461.1	1.644	1.614	1.643	1084.4	1398	45.11	0.751	51.6	83.3
	457.7	461.4	460.9	1.530	1.501	1.531	1019.4	1441	43.41	0.745	54.5	84.1
	457.7	461.2	461.1	1.421	1.393	1.421	952.1	1481	41.39	0.730	57.2	84.7
	457.7	461.2	461.1	1.312	1.286	1.313	884.1	1518	39.16	0.707	59.7	85.1
	457.8	461.1	461.1	1.209	1.184	1.209	816.2	1549	36.74	0.678	61.9	85.3
	457.8	461.2	461.0	1.110	1.082	1.113	748.8	1579	34.05	0.640	63.8	85.3
	457.7	461.2	461.0	1.012	0.985	1.015	680.8	1606	31.21	0.597	65.4	85.1
	457.7	461.3	461.0	0.918	0.892	0.921	613.0	1631	28.31	0.550	66.9	84.5
	457.7	461.3	461.0	0.828	0.803	0.833	546.0	1655	25.13	0.495	67.7	83.4
	457.7	461.3	461.0	0.741	0.719	0.747	479.9	1677	22.00	0.439	68.3	81.9
	457.7	461.3	461.0	0.657	0.636	0.664	413.6	1697	18.69	0.378	68.1	79.6
	457.7	461.3	461.0	0.571	0.554	0.580	344.4	1717	15.02	0.307	66.5	76.1
	457.7	461.2	461.0	0.499	0.484	0.509	276.2	1736	11.35	0.235	63.4	69.7
	457.7	461.3	461.0	0.428	0.417	0.440	209.5	1754	7.67	0.160	57.0	61.4
	457.7	461.2	461.1	0.370	0.364	0.384	136.7	1775	3.40	0.072	39.2	46.0
	457.7	461.2	461.0	0.340	0.338	0.353	79.4	1790	0.00	0.000	0.0	29.0

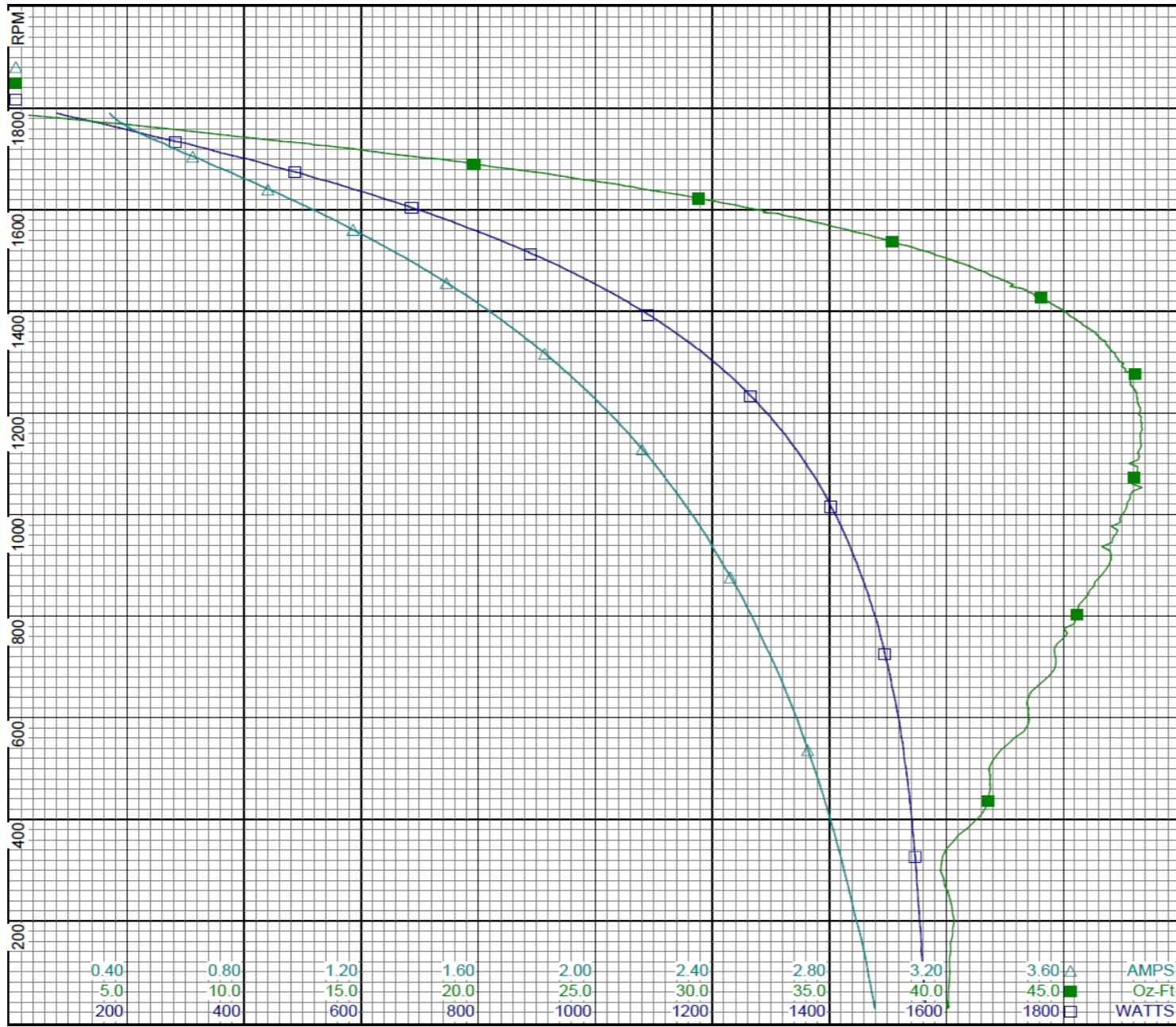
DRAWING NO.	PAGE 5 of 8	REV.
	3N349BH	-

Dayton Electric Mfg. Co. Lake Forest, IL 60045 USA

Performance Data



3N349BH REV.
-



Curve Descriptions:
 Motor(1) Test 9 Start 460V 60 Hz 4P
 CCW
 □ SPEED vs WATTS
 ■ SPEED vs TORQUE
 △ SPEED vs Ia

Motor Ratings:
 (1) P055BRA163001 3N349BH

0.40	0.80	1.20	1.60	2.00	2.40	2.80	3.20	3.60	AMPS
5.0	10.0	15.0	20.0	25.0	30.0	35.0	40.0	45.0	Oz-Ft
200	400	600	800	1000	1200	1400	1600	1800	WATTS

DRAWING NO.	PAGE 6 of 8	REV.
3N349BH		-

Dayton Electric Mfg. Co. Lake Forest, IL 60045 USA

Performance Data



3N349BH	REV. -
----------------	-----------

Dayton Manufacturing Company

Motor Description

Model: P055BRA163001 3N349BH
 Motor ID: 1
 Poles: 4
 Volts: 208-230/460
 Frequency: 60&50
 HP: 1/4
 Speed: 1725&1425
 Phase: 3
 Protector: NONE

Test Conditions

Test Type: Run
 Test Number: 10
 Poles: 4
 Volts: 460
 Hz: 60
 Rotation: CCW
 Special Cond:
 Speed Conn:
 TestBoard: Amtps Performance Fixture #4
 Run Cap: 0
 Start Cap: 0µfd
 Environment: 20.5 Deg C 28 % RH 994 hPa
 Tested: 12/6/2016 3:09:03 PM
 Tested By: Sharp, Gerald
 Gear Ratio: 1:1
 Bearing Friction: -0.73 Oz-Ft
 Windage Torque: -2.98 Oz-Ft

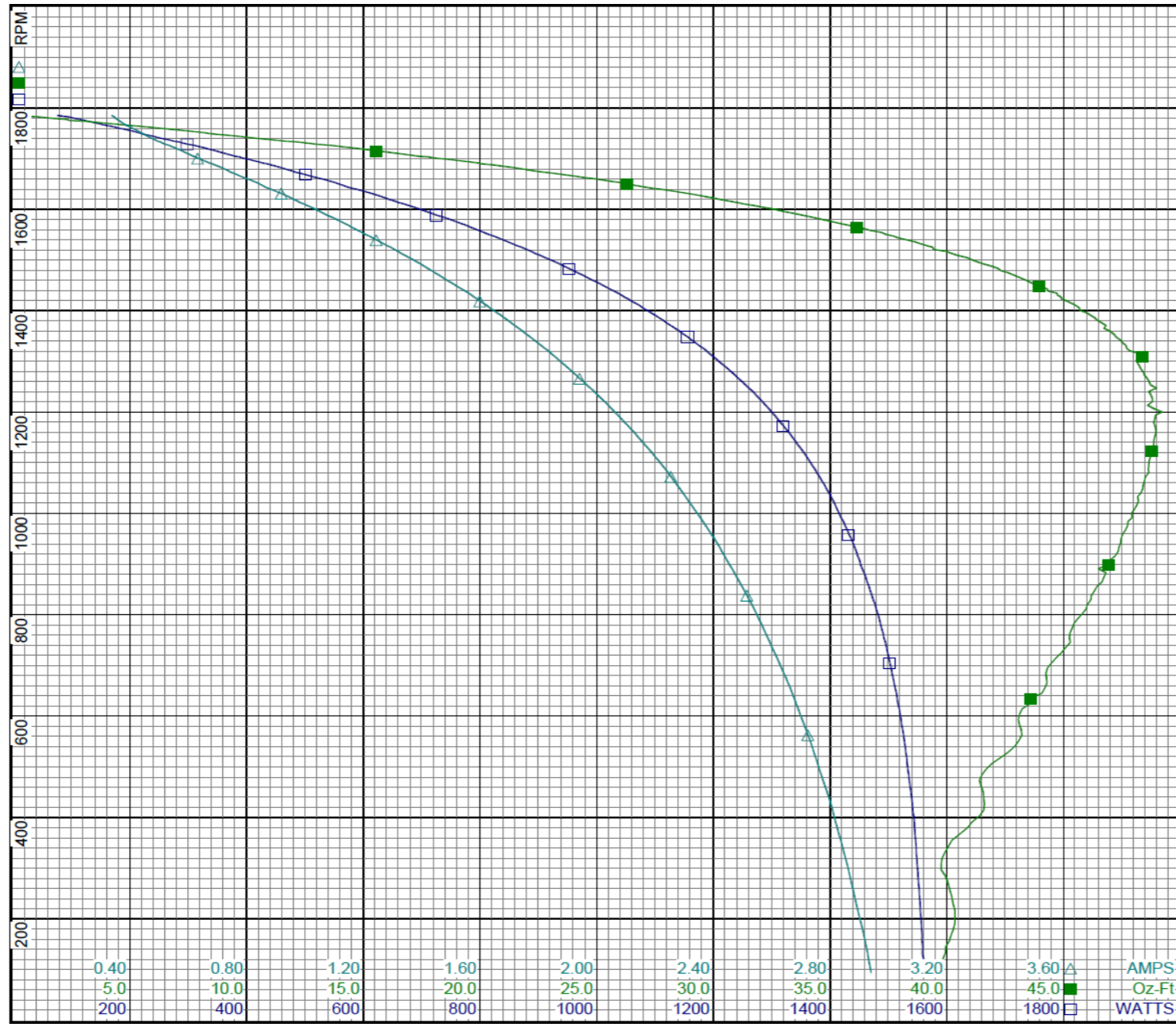
Special Points	Vab (V)	Vbc (V)	Vca (V)	Ia (A)	Ib (A)	Ic (A)	Watts	RPM	Tq (Oz-ft)	HP	Eff (%)	PF (%)
	459.5	460.5	460.0	0.337	0.334	0.337	75.5	1785	0.00	0.000	0.0	28.2
	459.5	460.6	459.9	0.366	0.357	0.364	128.2	1774	3.11	0.066	38.2	44.4
	459.5	460.5	460.0	0.414	0.403	0.411	188.0	1758	6.58	0.138	54.7	57.7
	459.5	460.5	460.0	0.461	0.449	0.456	239.6	1744	9.63	0.200	62.3	66.0
0.25 HP	459.6	460.5	460.0	0.503	0.490	0.498	283.1	1733	12.12	0.250	65.9	71.5
12.2 OZ-FT	459.6	460.5	460.0	0.505	0.492	0.499	284.5	1732	12.20	0.252	66.0	71.6
	459.6	460.5	459.9	0.529	0.515	0.523	305.9	1727	13.35	0.274	66.9	73.5
1725 RPM	459.5	460.5	459.9	0.538	0.525	0.532	313.7	1725	13.80	0.283	67.4	74.1
	459.6	460.3	460.1	0.601	0.587	0.594	366.0	1709	16.64	0.339	69.0	77.3
	459.5	460.5	460.0	0.682	0.665	0.674	434.8	1690	20.04	0.403	69.2	81.0
	459.5	460.5	460.0	0.767	0.750	0.758	501.3	1668	23.60	0.469	69.7	83.0
	459.5	460.6	459.9	0.863	0.843	0.853	572.1	1644	27.03	0.529	69.0	84.2
	459.6	460.6	459.9	0.962	0.941	0.950	644.5	1619	30.29	0.584	67.6	85.1
	459.6	460.5	459.9	1.063	1.041	1.051	716.6	1592	33.42	0.633	65.9	85.5
	459.6	460.5	460.0	1.171	1.150	1.156	790.8	1561	36.49	0.678	64.0	85.6
	459.6	460.6	459.9	1.282	1.260	1.266	863.8	1528	39.17	0.712	61.5	85.4
	459.6	460.5	459.9	1.396	1.373	1.378	936.3	1492	41.56	0.738	58.8	85.0
	459.6	460.5	459.9	1.520	1.496	1.502	1013.3	1448	43.95	0.758	55.8	84.4
	459.6	460.5	459.9	1.623	1.598	1.606	1073.3	1410	45.52	0.764	53.1	83.7
	459.6	460.5	459.9	1.732	1.705	1.714	1134.3	1365	46.73	0.759	49.9	82.9
	459.6	460.5	459.9	1.845	1.817	1.826	1194.0	1314	48.34	0.756	47.3	81.9
	459.6	460.5	459.9	1.954	1.925	1.935	1248.9	1260	48.66	0.730	43.6	80.9
BDT OZ-FT	459.6	460.5	459.9	2.062	2.032	2.043	1299.9	1200	49.23	0.703	40.3	79.8
	459.6	460.5	459.9	2.062	2.032	2.043	1299.9	1200	49.23	0.703	40.3	79.8
	459.6	460.5	459.9	2.163	2.131	2.144	1343.8	1137	48.87	0.661	36.7	78.6
	459.6	460.5	459.9	2.255	2.223	2.236	1381.8	1072	48.52	0.619	33.4	77.5
	459.6	460.5	459.9	2.344	2.313	2.326	1415.4	1000	47.91	0.570	30.1	76.3
	459.5	460.5	459.9	2.429	2.399	2.410	1445.0	924	47.34	0.521	26.9	75.2
	459.5	460.5	459.9	2.507	2.476	2.487	1469.0	846	46.32	0.467	23.7	74.0
	459.6	460.5	459.9	2.579	2.549	2.562	1490.8	763	45.28	0.411	20.6	73.0
	459.7	460.4	460.0	2.649	2.617	2.628	1507.9	675	44.27	0.356	17.6	71.9
	459.7	460.4	459.9	2.711	2.679	2.692	1522.4	584	43.11	0.299	14.7	70.9
	459.7	460.4	459.9	2.770	2.738	2.751	1534.8	483	41.50	0.239	11.6	70.0
	459.6	460.5	459.9	2.825	2.792	2.805	1544.9	379	40.89	0.185	8.9	69.1
	459.7	460.4	459.9	2.873	2.840	2.853	1551.3	272	40.04	0.130	6.2	68.2
	459.7	460.4	459.9	2.920	2.887	2.898	1557.7	155	40.10	0.074	3.6	67.4

DRAWING NO.	PAGE 7 of 8	REV.
	3N349BH	-

Performance Data



3N349BH REV. -



Dayton

Curve Descriptions:
 Motor(1) Test 10 Run 460V 60 Hz 4P
 CCW

- SPEED vs WATTS
- SPEED vs TORQUE
- △ SPEED vs Ia

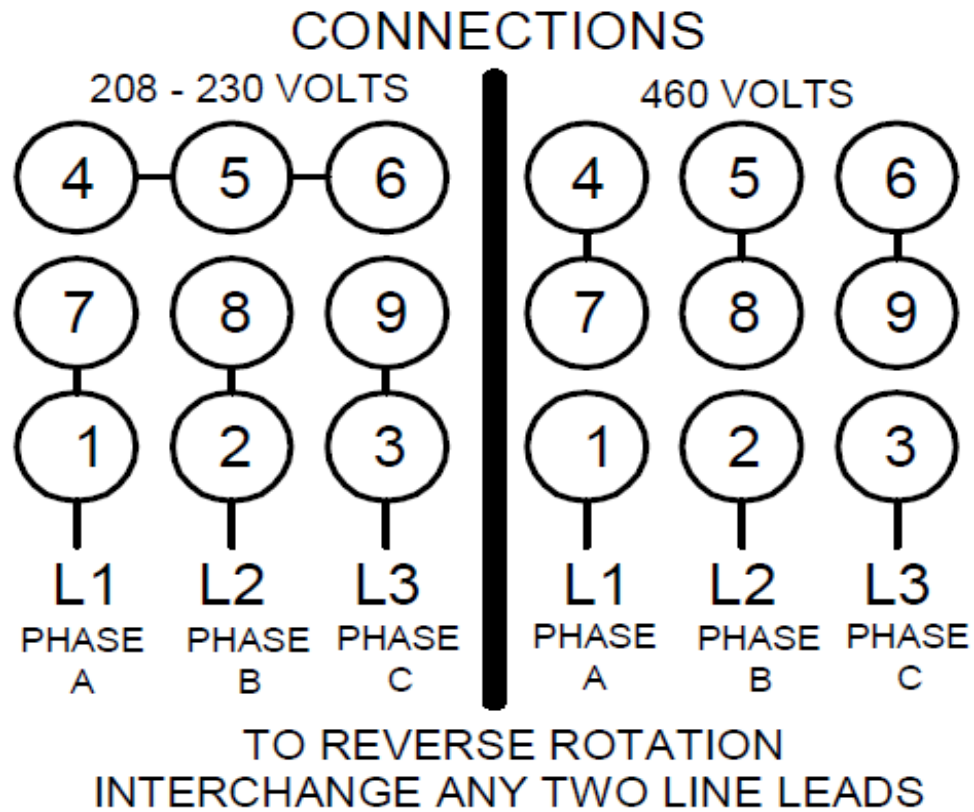
Motor Ratings:
 (1) P055BRA163001 3N349BH

DRAWING NO.	PAGE 8 of 8	REV.
	3N349BH	-

Dayton Electric Mfg. Co. Lake Forest, IL 60045 USA

3N349BH

REV.
-



DRAWING NO.	PAGE 1 of 1	REV.
3N349BH		-

Dayton[®]**INDUSTRIAL MOTOR**

HP: 1/4&1/6

VOLTS: 208-230/460

AMPS: 1.1-1.1/5

RPM: 1725&1425

DUTY: CONT

SF: 1.0

KVA CODE: J

ENCL: TENV

THERMALLY PROTECTED: NONE

MFG. NO. PROT. CODE:

MTR REF: P55BRA-1630

50 HZ 190/380V: FLA IS 1.0/.5

Part No **3N349BH**

PH: 3

HZ: 60&50

FR: 48

INS CL: B

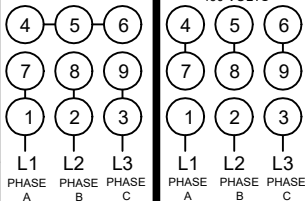
AMB: 40 °C

SFA: 1.1-1.1/5

AVG. F.L.
EFF. 68**Disconnect Power Before Making Any
Electrical Connections or Changes****CONNECTIONS**

208 - 230 VOLTS

460 VOLTS

TO REVERSE ROTATION
INTERCHANGE ANY TWO LINE LEADS

Mfd for Dayton Electric Mfg. Co., Lake Forest, IL 60045 USA

Made in Mexico