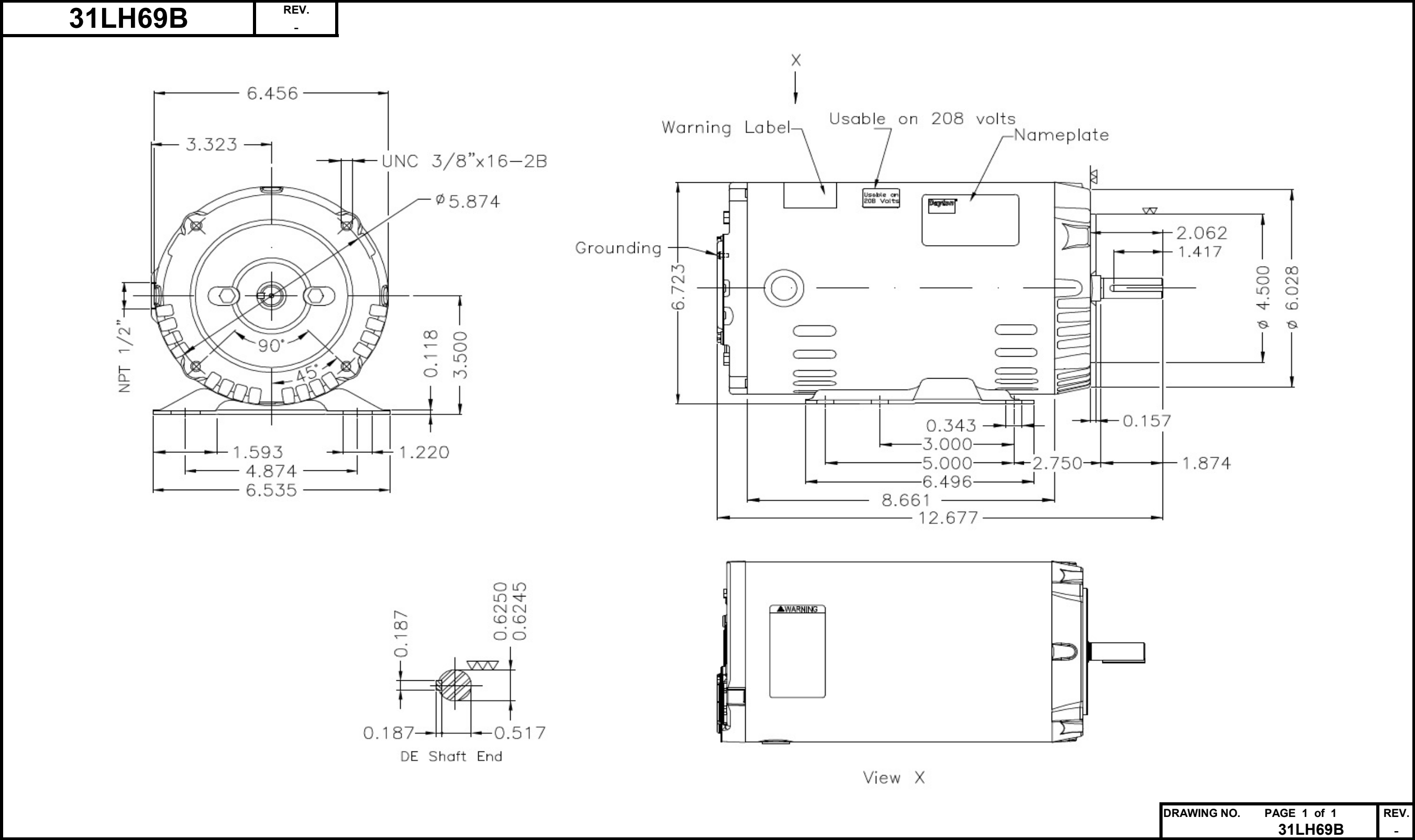


Dimensional Drawing



DRAWING NO. PAGE 1 of 1 REV.
31LH69B -

©2020 W.W. Grainger, Inc. This design may not be reproduced, modified or redistributed without written permission from W.W. Grainger, Inc.

DATA SHEET



Three Phase Induction Motor - Squirrel Cage

Customer

Product line : W01 - ODP - Premium Efficiency

Frame	: 56HC	Locked rotor time	: 14 s (hot) 25 s (cold)
Output	: 2 HP (1.5 kW)	Temperature rise ⁴	: 80 K
Poles	: 2	Duty cycle	: Cont.(S1)
Frequency	: 60 Hz	Ambient temperature	: -20 °C to +40 °C
Rated voltage	: 230/460 V	Altitude	: 1000 m.a.s.l
Rated current	: 4.84/2.42 A	Cooling method	: IC01 - ODP
L. R. Amperes	: 43.1/21.5 A	Mounting	: F-1
LRC (p.u.)	: 8.9 Code K	Direct of rotation ¹	: Both
No load current	: 1.83/0.917 A	Noise level ²	: 62.0 dB(A)
Rated speed	: 3510 rpm	Starting method	: Direct On Line
Slip	: 2.50 %	Approx. weight ³	: 16.8 kg
Rated torque	: 0.414 kgfm	Design	: B
Locked rotor torque	: 220 %		
Pull up torque	: 185 %		
Breakdown torque	: 330 %		
Insulation class	: F		
Service factor	: 1.15		
Moment of inertia (J)	: 0.0049 kgm ²		

Output	Start	50%	75%	100%	Load type: -
Efficiency (%)	-	84.0	85.5	85.5	Load torque: -
Power factor	0.67	0.77	0.86	0.91	Load inertia (J=GD ² /4): -

	Drive end	Non drive end
Bearing type	6204-ZZ	6202-ZZ
Lubrication interval	-	-
Lubricant amount	-	-
Lubricant type	MOBIL POLYREX EM	

Notes:

- * Dayton # 31LH69B
- * Connection YY/Y - Document 10003174687

Standards	Specification	: MG1 - Part 10	Vibration	: MG1 - Part 7
	Tests	: MG1 - Part 12	Tolerance	: MG1 - Part 12
	Noise	: MG1 - Part 9		

This revision replaces and cancels the previous one, which must be eliminated.

- (1) When viewed from the drive end.
- (2) Measured at 1m and with tolerance of +3dB(A).
- (3) Approximate weight subject to changes after manufacturing process.
- (4) At the rated point.

These are average values based on tests with sinusoidal power supply, subject to the tolerances stipulated in NEMA MG 1-12.

Rev.	Summary of changes		Performed	Checked	Date
Performed by	mrsanchez			181283/2016-A	
Checked by	mmoctezuma			Page	Revision
Date	20/02/2018			1/2	1

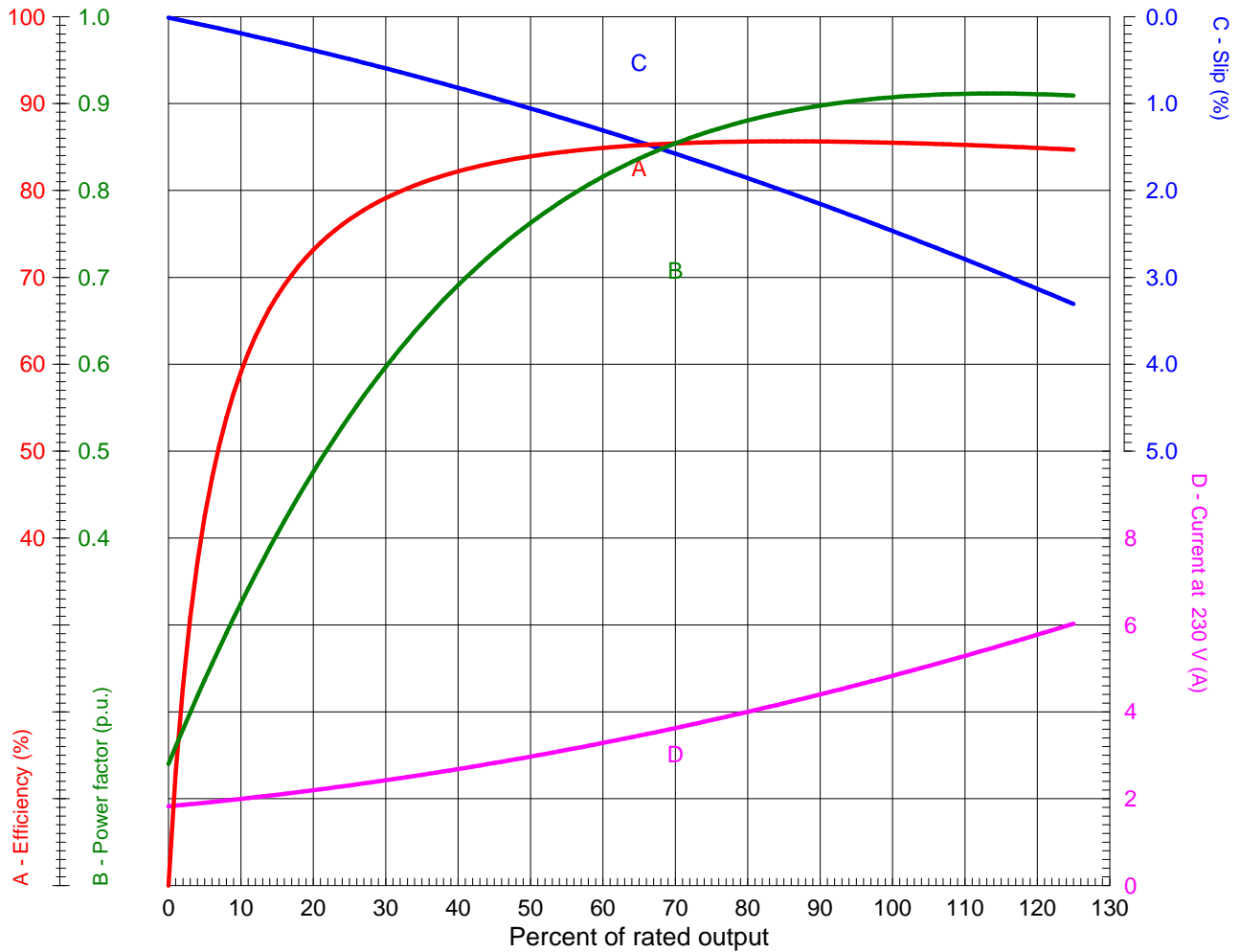
LOAD PERFORMANCE CURVE



Three Phase Induction Motor - Squirrel Cage

Customer

Product line : W01 - ODP - Premium Efficiency



Performance : 2 HP (1.5 kW) 230/460 V 60 Hz 2P 56HC

Rated current	: 4.84/2.42 A	Moment of inertia (J)	: 0.0049 kgm ²
LRC (p.u.)	: 8.9 Code K	Duty cycle	: Cont.(S1)
Rated torque	: 0.414 kgfm	Insulation class	: F
Locked rotor torque	: 220 %	Service factor	: 1.15
Breakdown torque	: 330 %	Temperature rise	: 80 K
Rated speed	: 3510 rpm	Design	: B

Rev.	Summary of changes	Performed	Checked	Date
Performed by	mrsanchez	181283/2016-A1		Page Revision
Checked by	mmoctezuma			
Date	20/02/2018			
		1/1	1	

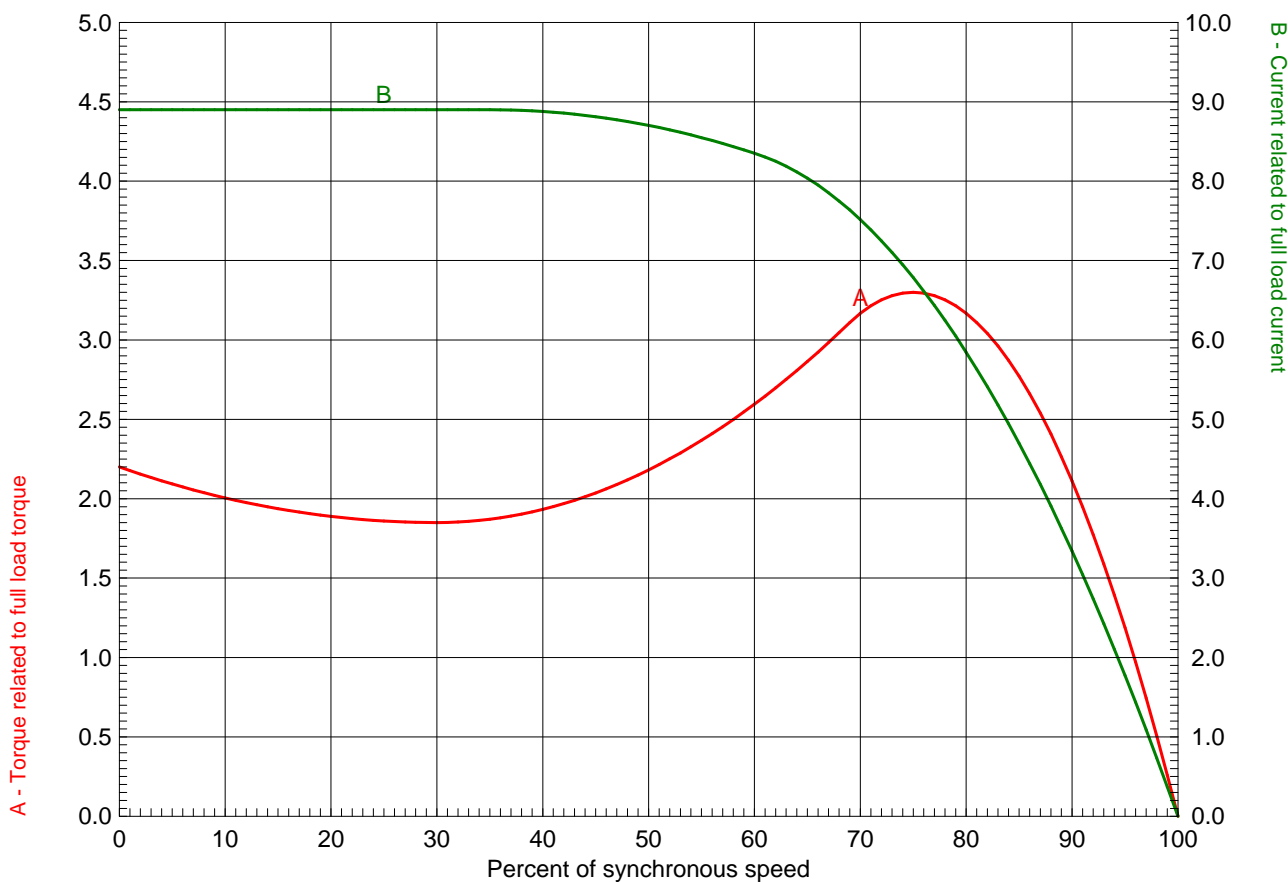
TORQUE AND CURRENT X SPEED CURVE



Three Phase Induction Motor - Squirrel Cage

Customer

Product line : W01 - ODP - Premium Efficiency



Performance : 2 HP (1.5 kW) 230/460 V 60 Hz 2P 56HC

Rated current : 4.84/2.42 A	Moment of inertia (J) : 0.0049 kgm ²
LRC (p.u.) : 8.9 Code K	Duty cycle : Cont.(S1)
Rated torque : 0.414 kgfm	Insulation class : F
Locked rotor torque : 220 %	Service factor : 1.15
Breakdown torque : 330 %	Temperature rise : 80 K
Rated speed : 3510 rpm	Design : B

Locked rotor time 100% : 14 s (hot) 25 s (cold)
 Load inertia (J=GD²/4) : 0.0049 kgm²

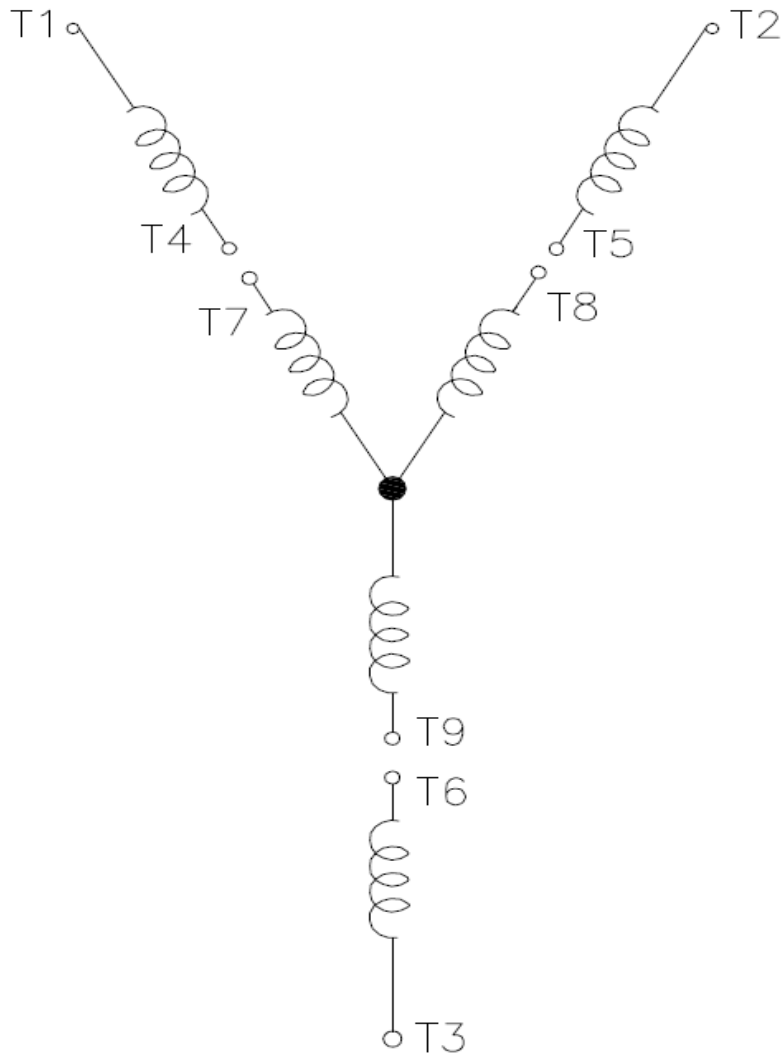
Rev.	Summary of changes	Performed	Checked	Date
Performed by	mrsanchez	181283/2016-A1		
Checked by	mmoctezuma	Page	Revision	
Date	20/02/2018	1/1	1	

Wiring Diagram

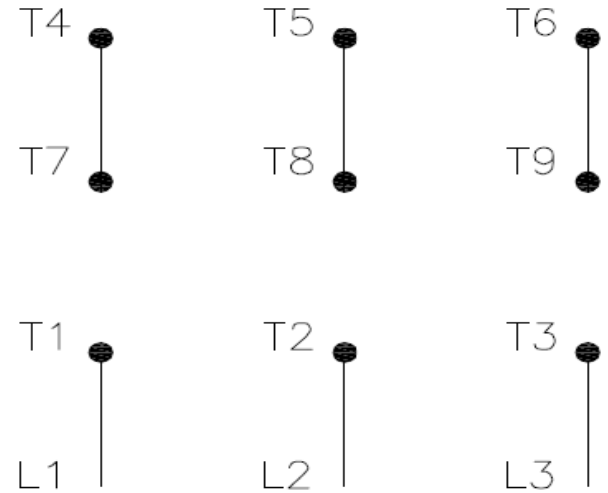


31LH69B

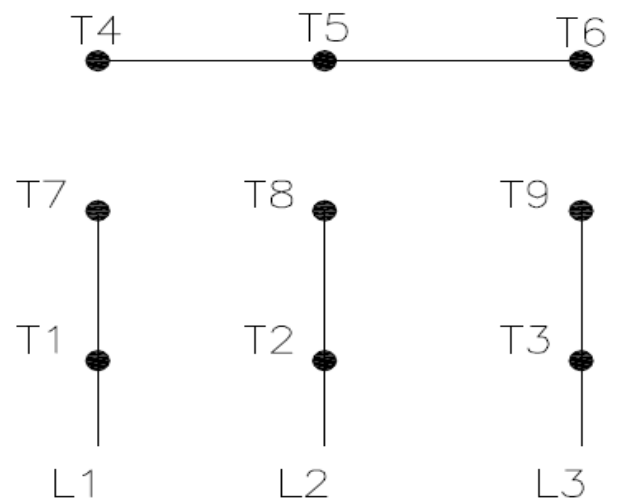
REV.
0



High Voltage (Y)



Low Voltage (YY)



- T1 — Blue
- T2 — White
- T3 — Orange
- T4 — Yellow
- T5 — Black
- T6 — Gray
- T7 — Pink
- T8 — Red
- T9 — Brick Red

Interchange any two line wires to reverse rotation.

DRAWING NO.	PAGE 1 of 1	REV.
31LH69B		0

27JUL18

Dayton

MADE IN MEXICO

NEMA
Premium

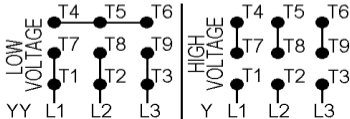
MODEL NO.

UL **US****CE****SP**
Energy Verified**31LH69B**

TO0IC0X0X0000101746

MAT:13827831

PH **3** HP (KW) **2.0(1.5)**
 HZ **60** V **230/460**
 RPM **3510** A **4.84/2.42**
 FR **56HC** DES **B**
IP21 ENCL **ODP**
 AMB **40 °C** CODE **K**
 SF **1.15** INS **F** ΔT **80 K**
 SFA **5.5/2.7 A** PF **0.91**
 DUTY **CONT**
 AVG F.L. EFF. **85.5%**



T1-BLU T2-WHT T3-ORG T4-YEL T5-BLK
T6-GRY T7-PNK T8-RED T9-BRK RED

INTERCHANGE ANY TWO LINE WIRES TO REVERSE ROTATION

ALT. RATING: 190-220/380-415V 50Hz
2.0HP 5.88-5.11/2.94-2.71 A 2890 RPM S.F.1.15

Mfd. for Dayton Electric Mfg. Co., Lake Forest, IL 60045 USA

S/N: