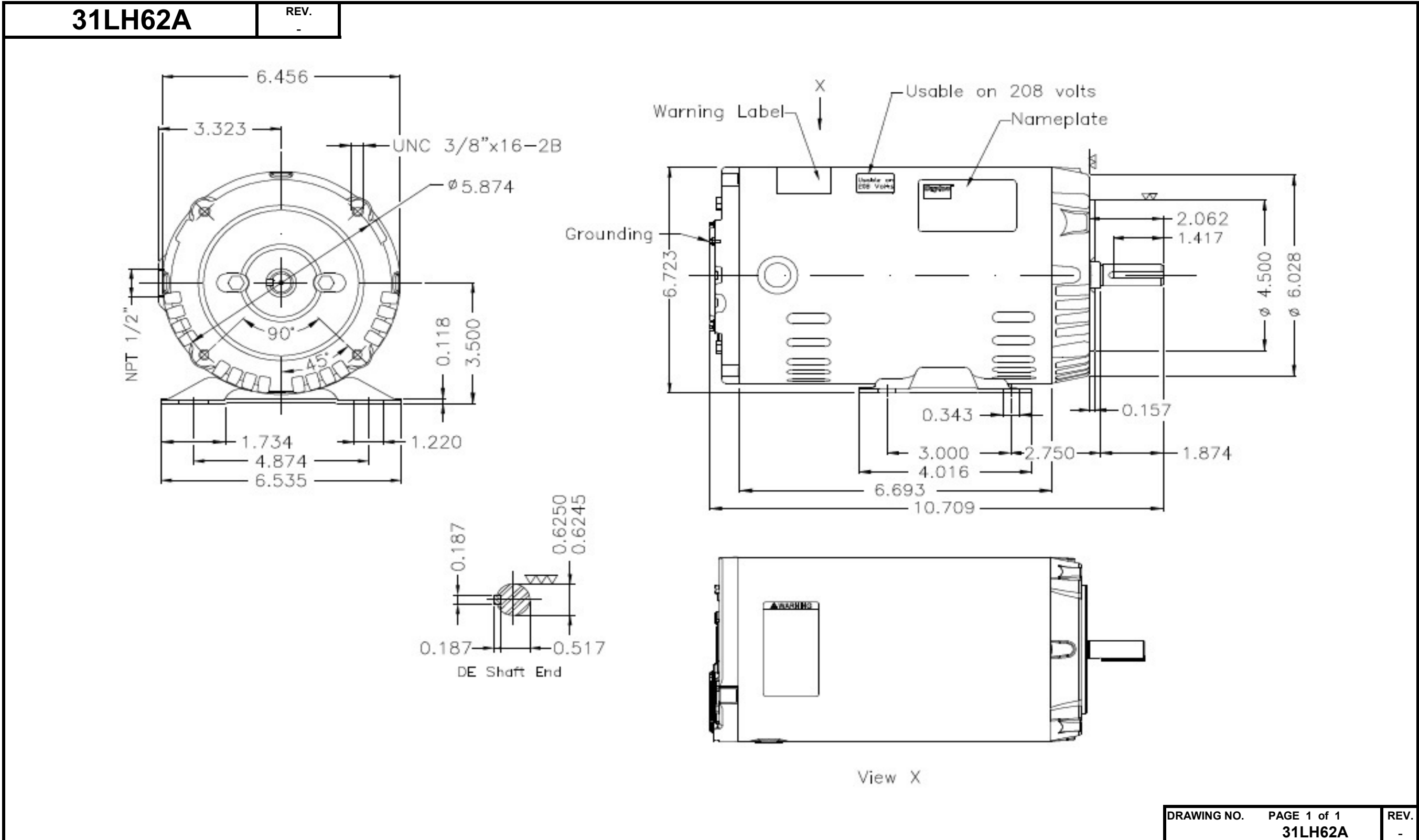


Dimensional Drawing



Dayton Electric Mfg. Co. Lake Forest, IL 60045 USA

DATA SHEET



Three Phase Induction Motor - Squirrel Cage

Customer

Product line : W01 - ODP - Premium Efficiency

Frame	: 56C	Locked rotor time	: 33 s (hot) 59 s (cold)
Output	: 0.75 HP (0.55 kW)	Temperature rise ⁴	: 80 K
Poles	: 2	Duty cycle	: Cont.(S1)
Frequency	: 60 Hz	Ambient temperature	: -20 °C to +40 °C
Rated voltage	: 230/460 V	Altitude	: 1000 m.a.s.l
Rated current	: 2.28/1.14 A	Cooling method	: IC01 - ODP
L. R. Amperes	: 14.8/7.41 A	Mounting	: F-1
LRC (p.u.)	: 6.5 Code J	Direct of rotation ¹	: Both
No load current	: 1.50/0.752 A	Noise level ²	: 62.0 dB(A)
Rated speed	: 3485 rpm	Starting method	: Direct On Line
Slip	: 3.19 %	Approx. weight ³	: 8.3 kg
Rated torque	: 0.156 kgfm		
Locked rotor torque	: 240 %		
Pull up torque	: 200 %		
Breakdown torque	: 280 %		
Insulation class	: F		
Service factor	: 1.25		
Moment of inertia (J)	: 0.0019 kgm ²		

Output	Start	50%	75%	100%	Load type: -
Efficiency (%)	-	68.0	74.0	76.8	Load torque: -
Power factor	0.69	0.57	0.70	0.79	Load inertia (J=GD ² /4): -

	Drive end	Non drive end	Foundation loads
Bearing type	6203-ZZ	6202-ZZ	Maximum traction : 12 kgf
Lubrication interval	-	-	Maximum compression : 20 kgf
Lubricant amount	-	-	
Lubricant type	MOBIL POLYREX EM		

Notes:
 * Dayton # 31LH62A
 * Connection YY/Y - Document 10003174687

Standards	Specification	: MG1 - Part 10	Vibration	: MG1 - Part 7
	Tests	: MG1 - Part 12	Tolerance	: MG1 - Part 12
	Noise	: MG1 - Part 9		

This revision replaces and cancels the previous one, which must be eliminated.

(1) When viewed from the drive end.
 (2) Measured at 1m and with tolerance of +3dB(A).
 (3) Approximate weight subject to changes after manufacturing process.
 (4) At the rated point.

These are average values based on tests with sinusoidal power supply, subject to the tolerances stipulated in NEMA MG 1-12.

Rev.	Summary of changes		Performed	Checked	Date
Performed by	mrsanchez			181373/2016-A	
Checked by	mmoctezuma			Page	Revision
Date	20/02/2018			1/2	1

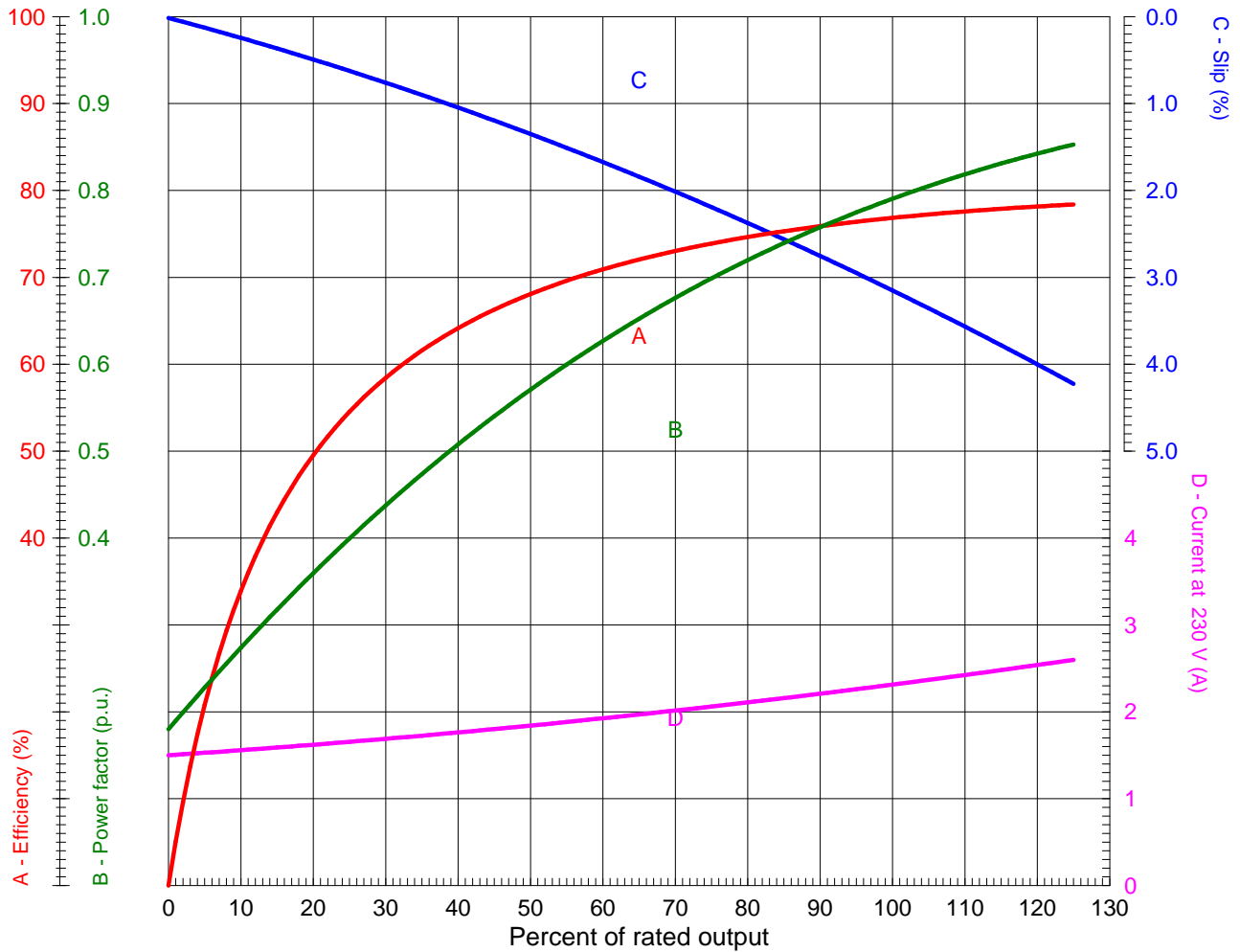
LOAD PERFORMANCE CURVE



Three Phase Induction Motor - Squirrel Cage

Customer

Product line : W01 - ODP - Premium Efficiency



Performance : 0.75 HP (0.55 kW) 230/460 V 60 Hz 2P 56C

Rated current : 2.28/1.14 A
 LRC (p.u.) : 6.5 Code J
 Rated torque : 0.156 kgfm
 Locked rotor torque : 240 %
 Breakdown torque : 280 %
 Rated speed : 3485 rpm

Moment of inertia (J) : 0.0019 kgm²
 Duty cycle : Cont.(S1)
 Insulation class : F
 Service factor : 1.25
 Temperature rise : 80 K

Rev.	Summary of changes		Performed	Checked	Date
Performed by	mrsanchez			181373/2016-A1	
Checked by	mmoctezuma			Page	Revision
Date	20/02/2018			1/1	1

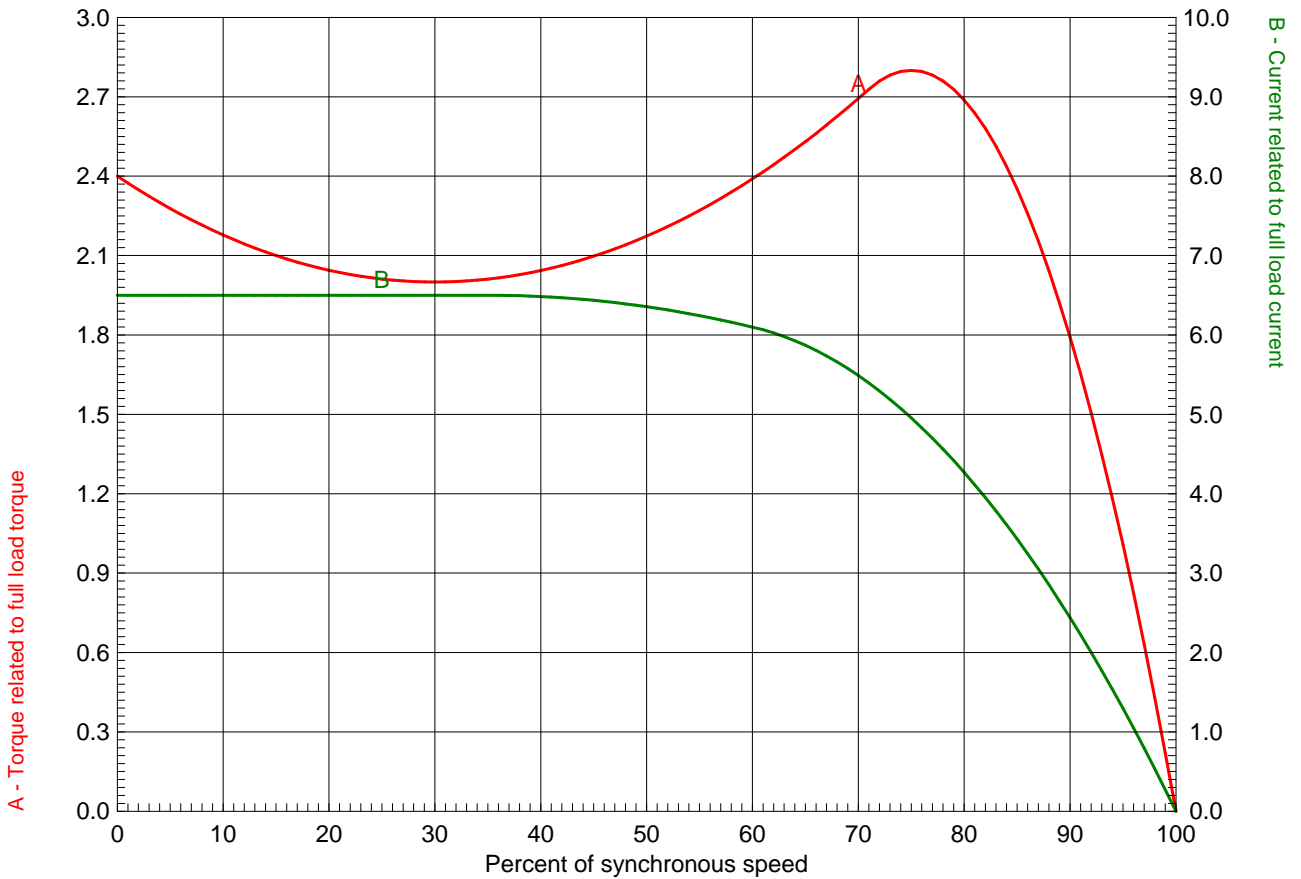
TORQUE AND CURRENT X SPEED CURVE



Three Phase Induction Motor - Squirrel Cage

Customer

Product line : W01 - ODP - Premium Efficiency



Performance : 0.75 HP (0.55 kW) 230/460 V 60 Hz 2P 56C

Rated current : 2.28/1.14 A	Moment of inertia (J) : 0.0019 kgm ²
LRC (p.u.) : 6.5 Code J	Duty cycle : Cont.(S1)
Rated torque : 0.156 kgfm	Insulation class : F
Locked rotor torque : 240 %	Service factor : 1.25
Breakdown torque : 280 %	Temperature rise : 80 K
Rated speed : 3485 rpm	

Locked rotor time 100% : 33 s (hot) 59 s (cold)
 Load inertia (J=GD²/4) : 0.0019 kgm²

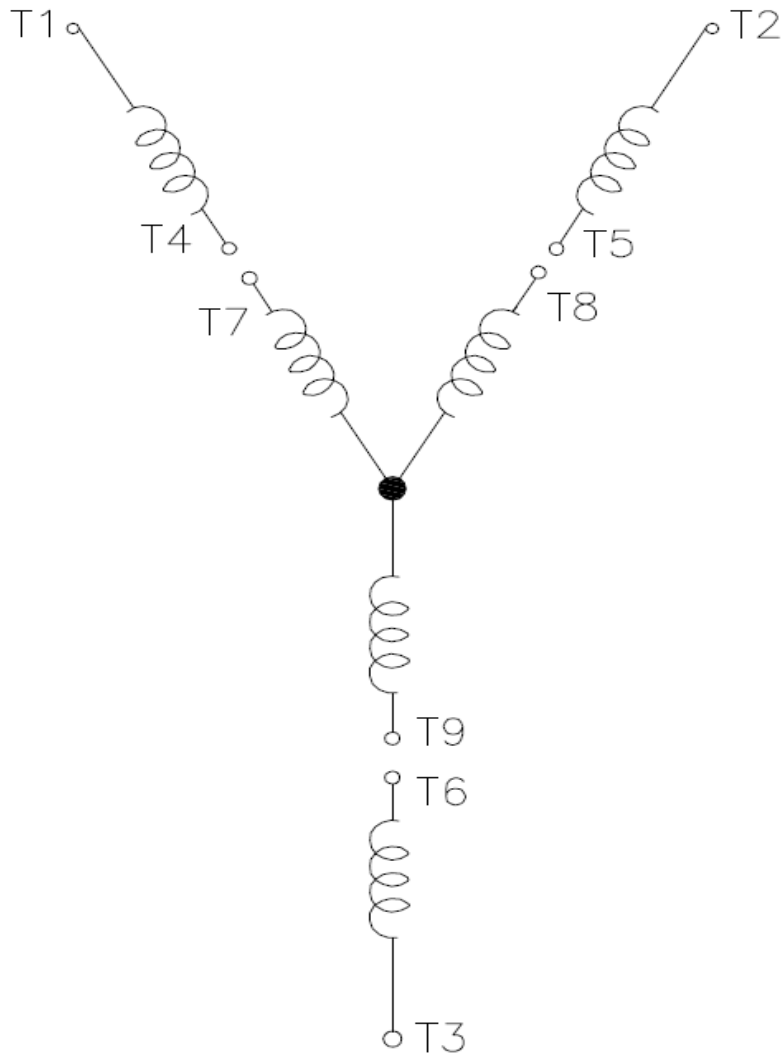
Rev.	Summary of changes	Performed	Checked	Date
Performed by	mrsanchez	181373/2016-A1		Revision
Checked by	mmoctezuma			
Date	20/02/2018			
		Page	1/1	1

Wiring Diagram

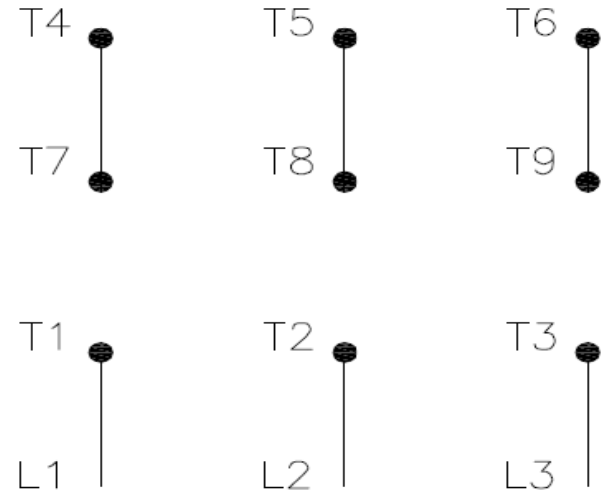


31LH62A

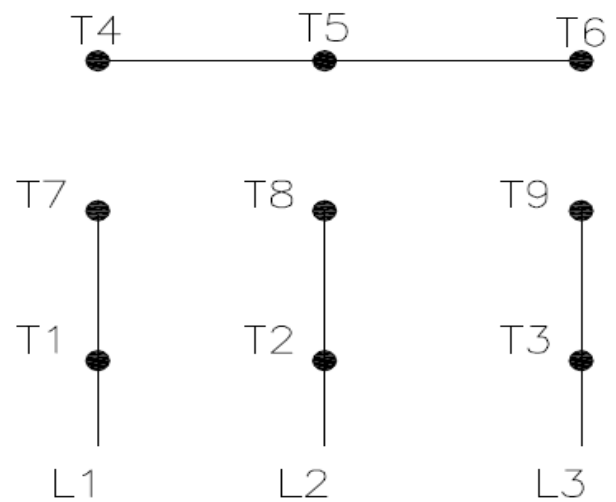
REV.
0



High Voltage (Y)



Low Voltage (YY)



- T1 — Blue
- T2 — White
- T3 — Orange
- T4 — Yellow
- T5 — Black
- T6 — Gray
- T7 — Pink
- T8 — Red
- T9 — Brick Red

Interchange any two line wires to reverse rotation.

DRAWING NO.	PAGE 1 of 1	REV.
31LH62A		0

20MAR18

Dayton®

MADE IN MEXICO

NEMA
Premium®

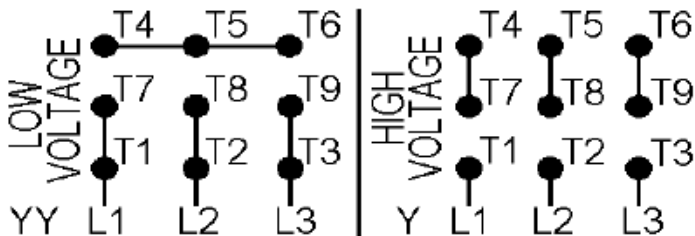
MODEL NO.

CEC® **US****CE** **CSA**® **US****31LH62A**

TO0IC0X0X0000100437

MAT: 13800057

PH 3 HP (kW) **0.75(0.55)**
 HZ **60** V **230/460**
 RPM **3485** A **2.28/1.14**
 FR **56C** DES **B**
 IP **21** ENCL **ODP**
 AMB **40 °C** CODE **J**
 SF **1.25** INS **F ΔT 80 K**
 SFA **2.8/1.4 A** PF **0.79**
 DUTY **CONT**
 AVG. F.L. EFF. **76.8%**



T1-BLU T2-WHT T3-ORG T4-YEL T5-BLK
T6-GRY T7-PNK T8-RED T9-BRK RED

INTERCHANGE ANY TWO LINE WIRES TO REVERSE ROTATION

ALT. RATING: 190-220/380-415V 50Hz
0.75HP 2.64-2.49/1.32-1.32 A 2830 RPM S.F. 1.25

S/N:

Mfd. for Dayton Electric Mfg. Co., Lake Forest, IL 60045 USA