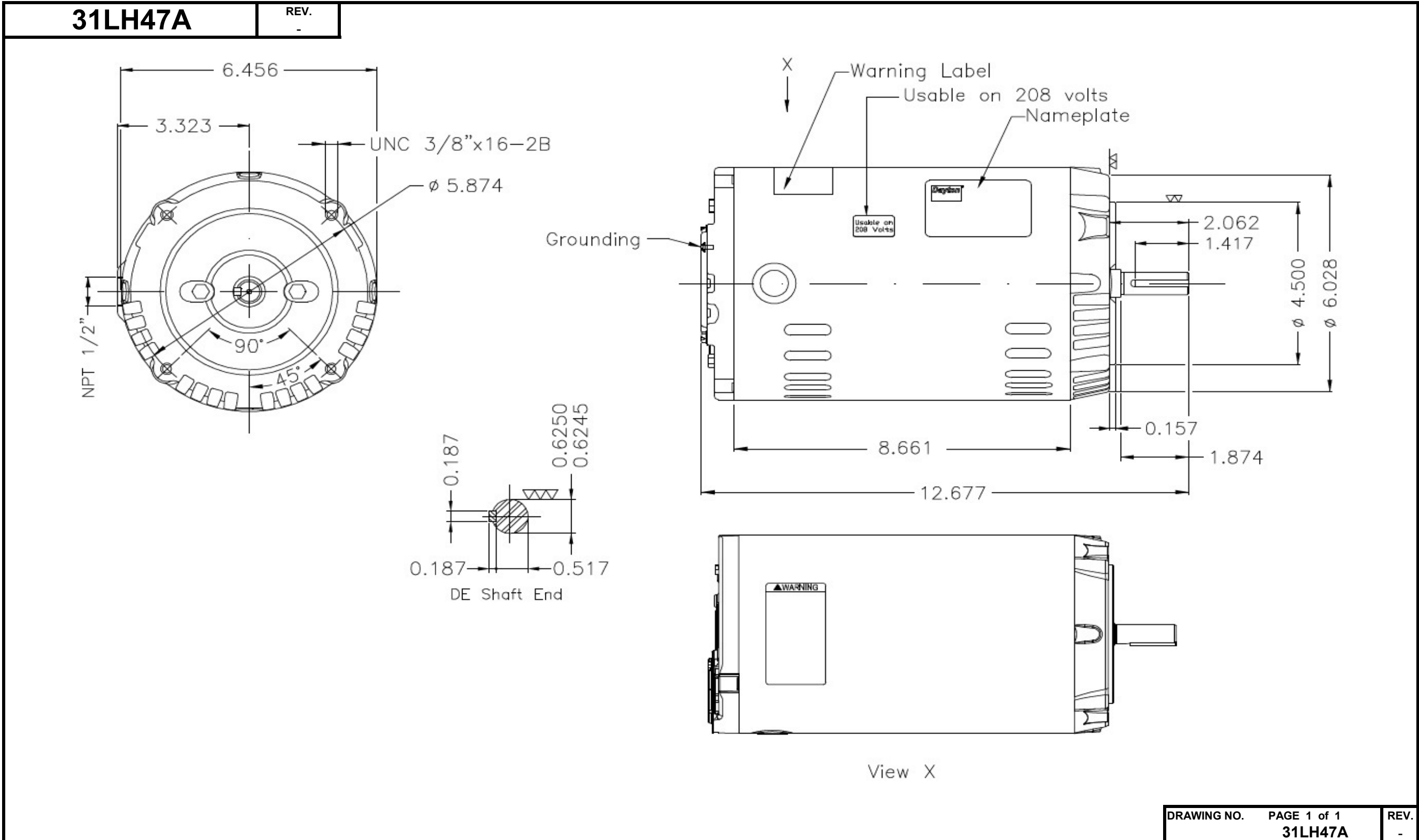


Dimensional Drawing



Dayton Electric Mfg. Co. Lake Forest, IL 60045 USA

DATA SHEET



Three Phase Induction Motor - Squirrel Cage

Customer :

Product line : W01 - ODP - Premium Efficiency

Frame	: 56C	Locked rotor time	: 33 s (hot) 59 s (cold)
Output	: 0.75 HP (0.55 kW)	Temperature rise ⁴	: 80 K
Poles	: 6	Duty cycle	: Cont.(S1)
Frequency	: 60 Hz	Ambient temperature	: -20 °C to +40 °C
Rated voltage	: 230/460 V	Altitude	: 1000 m.a.s.l
Rated current	: 2.52/1.26 A	Cooling method	: IC01 - ODP
L. R. Amperes	: 14.9/7.43 A	Mounting	: F-1
LRC (p.u.)	: 5.9 Code J	Direct of rotation ¹	: Both
No load current	: 1.79/0.896 A	Noise level ²	: 50.0 dB(A)
Rated speed	: 1160 rpm	Vibration class	: A
Slip	: 3.33 %	Starting method	: Direct On Line
Rated torque	: 0.469 kgfm	Coupling	: Direct
Locked rotor torque	: 220 %	Approx. weight ³	: 15.6 kg
Pull up torque	: 185 %	Painting plan	: 207N
Breakdown torque	: 280 %	Color	: RAL 7021
Insulation class	: F	Design	: B
Service factor	: 1.15		
Moment of inertia (J)	: 0.0071 kgm ²		

Output	Start	50%	75%	100%	Load type: -
Efficiency (%)	-	75.5	80.0	81.7	Load torque: -
Power factor	0.62	0.45	0.58	0.67	Load inertia (J=GD ² /4): -

	Drive end	Non drive end	Foundation loads	
Bearing type	6203-ZZ	6202-ZZ	Maximum traction	: 43 kgf
Lubrication interval	-	-	Maximum compression	: 59 kgf
Lubricant amount	-	-		
Lubricant type	MOBIL POLYREX EM			

Notes:
 * Dayton # 31LH47A
 * Connection YY/Y - Document 10003174687

Standards	Specification	: MG1 - Part 10	Vibration	: MG1 - Part 7
	Tests	: MG1 - Part 12	Tolerance	: MG1 - Part 12
	Noise	: MG1 - Part 9		

This revision replaces and cancels the previous one, which must be eliminated.
 (1) When viewed from the drive end.
 (2) Measured at 1m and with tolerance of +3dB(A).
 (3) Approximate weight subject to changes after manufacturing process.
 (4) At the rated point.

These are average values based on tests with sinusoidal power supply, subject to the tolerances stipulated in NEMA MG 1-12.

Rev.	Summary of changes	Performed	Checked	Date
Performed by	mrsanchez			180436/2016-A
Checked by	nviridiana			Page Revision
Date	06/11/2017			1/2 1

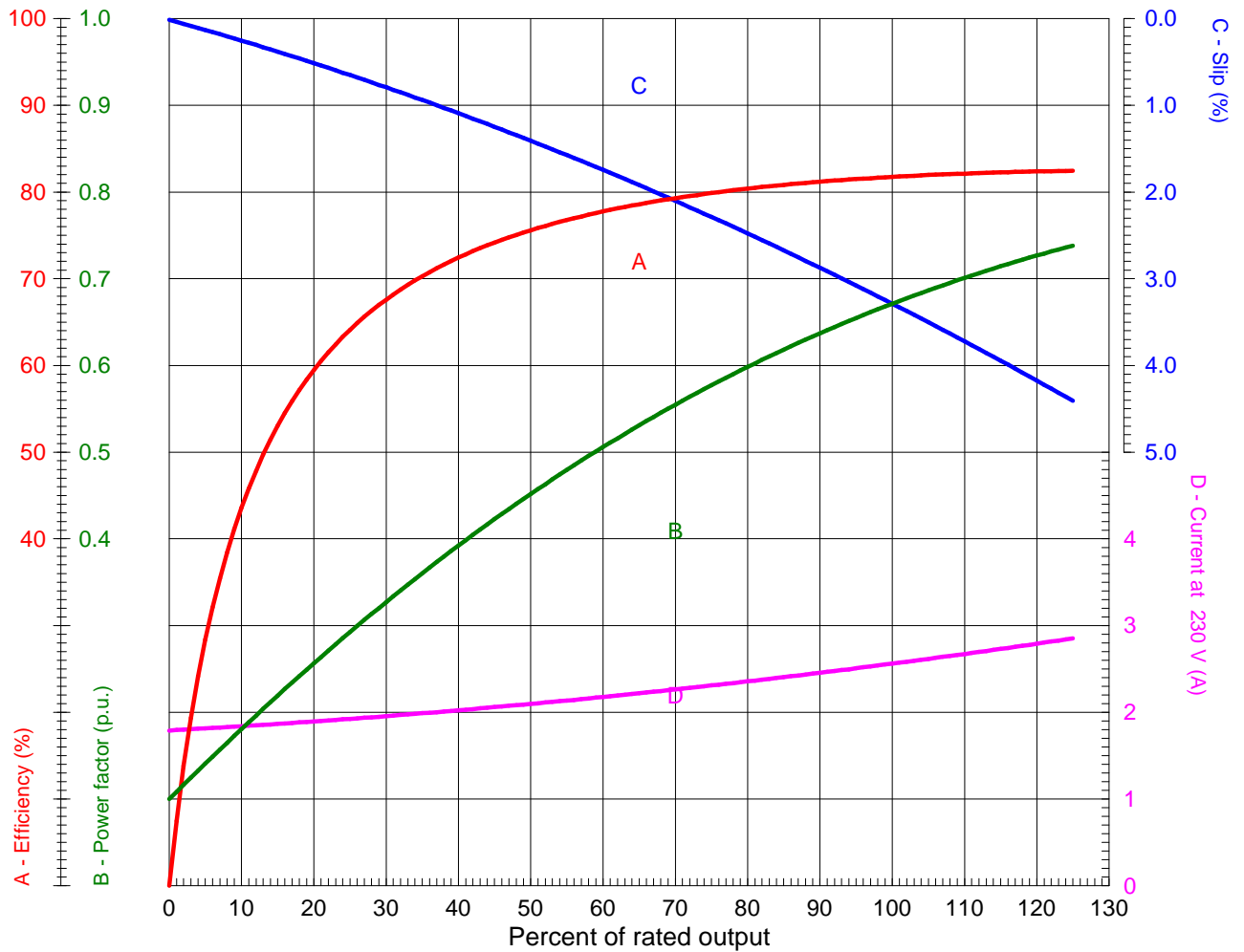
LOAD PERFORMANCE CURVE



Three Phase Induction Motor - Squirrel Cage

Customer : _____

Product line : W01 - ODP - Premium Efficiency



Performance : 0.75 HP (0.55 kW) 230/460 V 60 Hz 6P 56C

Rated current	: 2.52/1.26 A	Moment of inertia (J)	: 0.0071 kgm ²
LRC (p.u.)	: 5.9 Code J	Duty cycle	: Cont.(S1)
Rated torque	: 0.469 kgfm	Insulation class	: F
Locked rotor torque	: 220 %	Service factor	: 1.15
Breakdown torque	: 280 %	Temperature rise	: 80 K
Rated speed	: 1160 rpm	Design	: B

Rev.	Summary of changes		Performed	Checked	Date
Performed by	mrsanchez	Notes: * Dayton # 31LH47A * Connection YY/Y - Document 10003174687			
Checked by	nviridiana				
Date	06/11/2017				
				180436/2016-A1	
				Page	Revision
				1/1	1

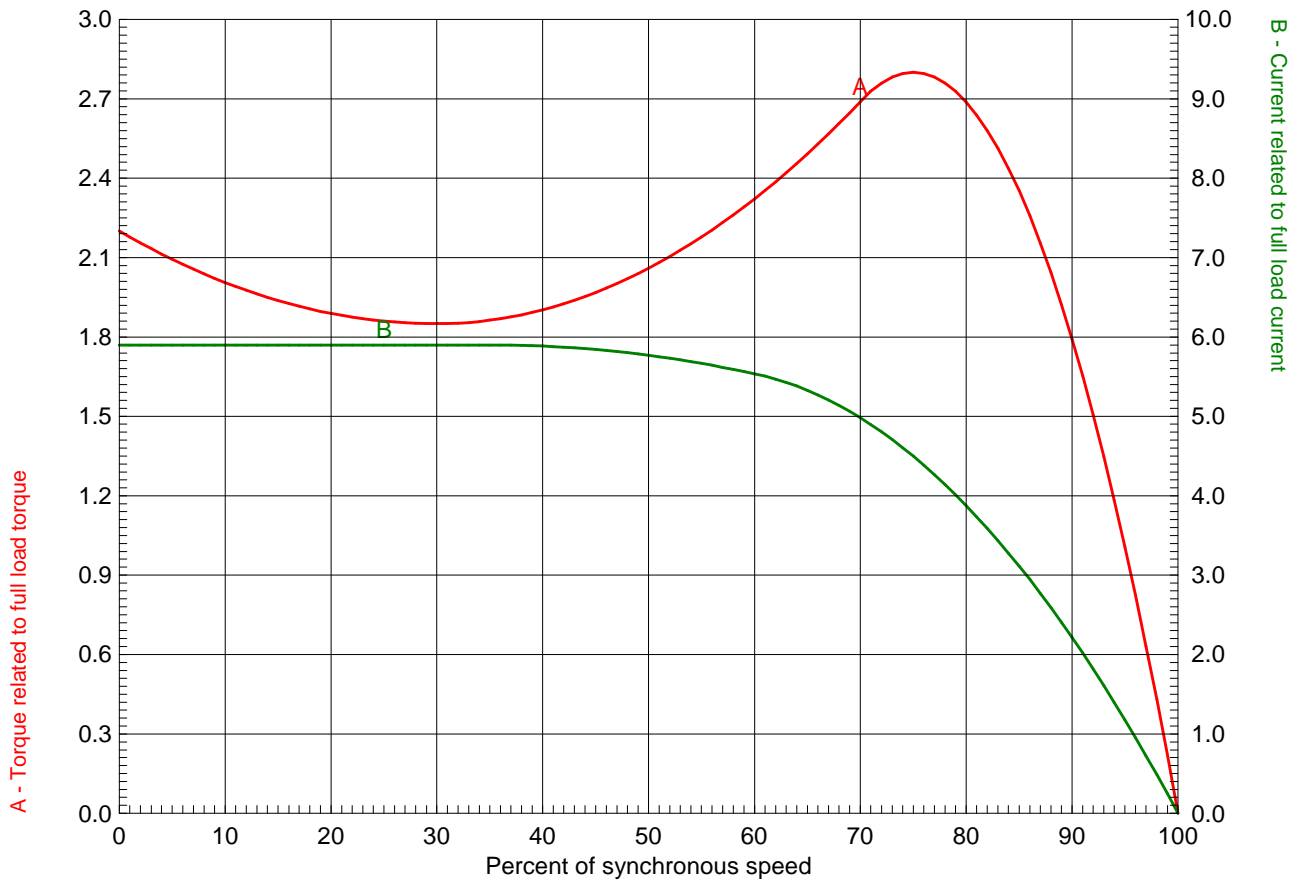
TORQUE AND CURRENT X SPEED CURVE



Three Phase Induction Motor - Squirrel Cage

Customer : _____

Product line : W01 - ODP - Premium Efficiency



Performance : 0.75 HP (0.55 kW) 230/460 V 60 Hz 6P 56C

Rated current : 2.52/1.26 A	Moment of inertia (J) : 0.0071 kgm ²
LRC (p.u.) : 5.9 Code J	Duty cycle : Cont.(S1)
Rated torque : 0.469 kgfm	Insulation class : F
Locked rotor torque : 220 %	Service factor : 1.15
Breakdown torque : 280 %	Temperature rise : 80 K
Rated speed : 1160 rpm	Design : B

Locked rotor time 100% : 33 s (hot) 59 s (cold)
 Load inertia (J=GD²/4) : 0.0071 kgm²

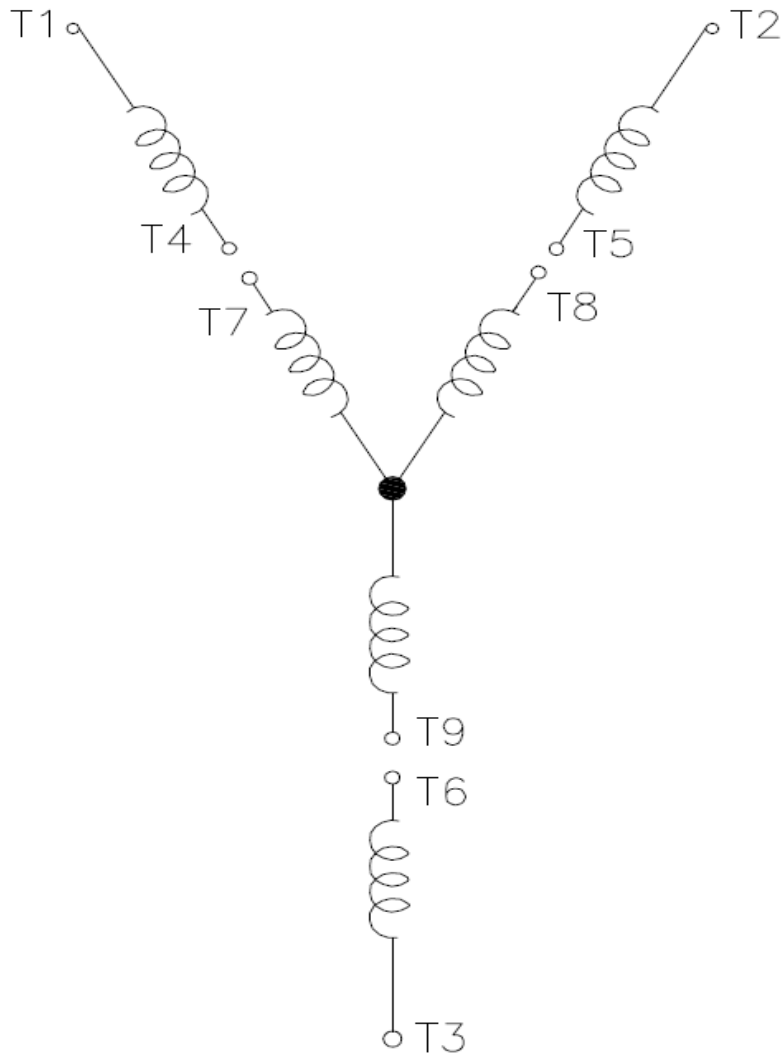
Rev.	Summary of changes	Performed	Checked	Date	
Performed by	mrsanchez	Notes: * Dayton # 31LH47A * Connection YY/Y - Document 10003174687		180436/2016-A1	
Checked by	nviridiana			Page	Revision
Date	06/11/2017			1/1	1

Wiring Diagram

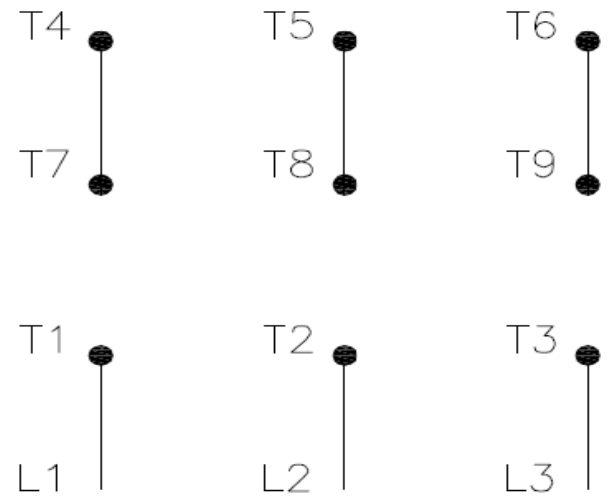


31LH47A

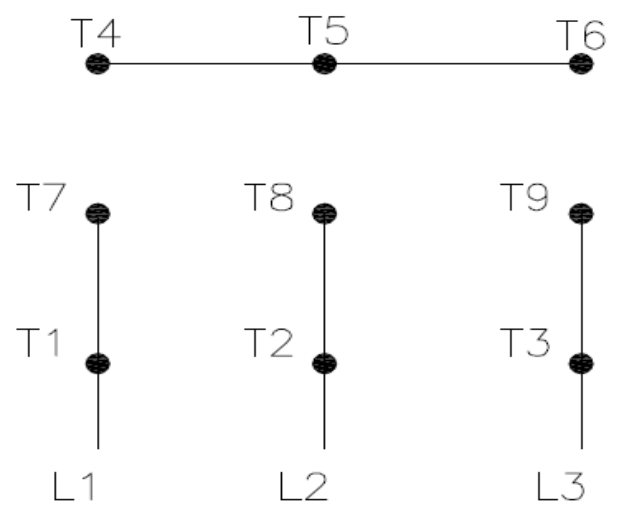
REV.
0



High Voltage (Y)



Low Voltage (YY)



- T1 — Blue
- T2 — White
- T3 — Orange
- T4 — Yellow
- T5 — Black
- T6 — Gray
- T7 — Pink
- T8 — Red
- T9 — Brick Red

Interchange any two line wires to reverse rotation.

DRAWING NO.	PAGE 1 of 1	REV.
31LH47A		0

Dayton Electric Mfg. Co. Lake Forest, IL 60045 USA

19DEZ17

Dayton®

MADE IN MEXICO

NEMA
Premium®

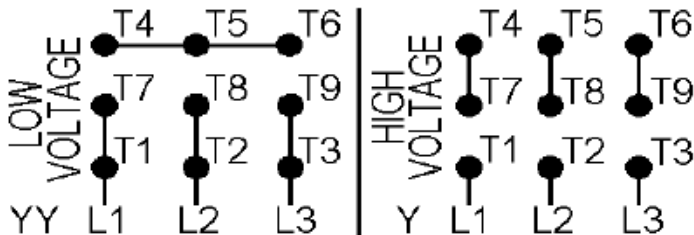
MODEL NO.

cRU® **US****CE****SP**®
US**31LH47A**

TO0IC0X0X0000900437

MAT: 13827603

PH 3	HP (kW) 0.75(0.55)
HZ 60	V 230/460
RPM 1160	A 2.52/1.26
FR 56C	DES B
IP 21	ENCL ODP
AMB 40 °C	CODE J
SF 1.15	INS F ΔT 80 K
SFA 2.9/1.4 A	PF 0.67
DUTY CONT	
AVG F.L. EFF.	81.7%



T1-BLU T2-WHT T3-ORG T4-YEL T5-BLK
T6-GRY T7-PNK T8-RED T9-BRK RED

INTERCHANGE ANY TWO LINE WIRES TO REVERSE ROTATION

ALT. RATING: 190-220/380-415V 50Hz
0.75HP 2.86-2.62/2.86-1.39 A 945 RPM S.F.1.15

S/N:

Mfd. for Dayton Electric Mfg. Co., Lake Forest, IL 60045 USA