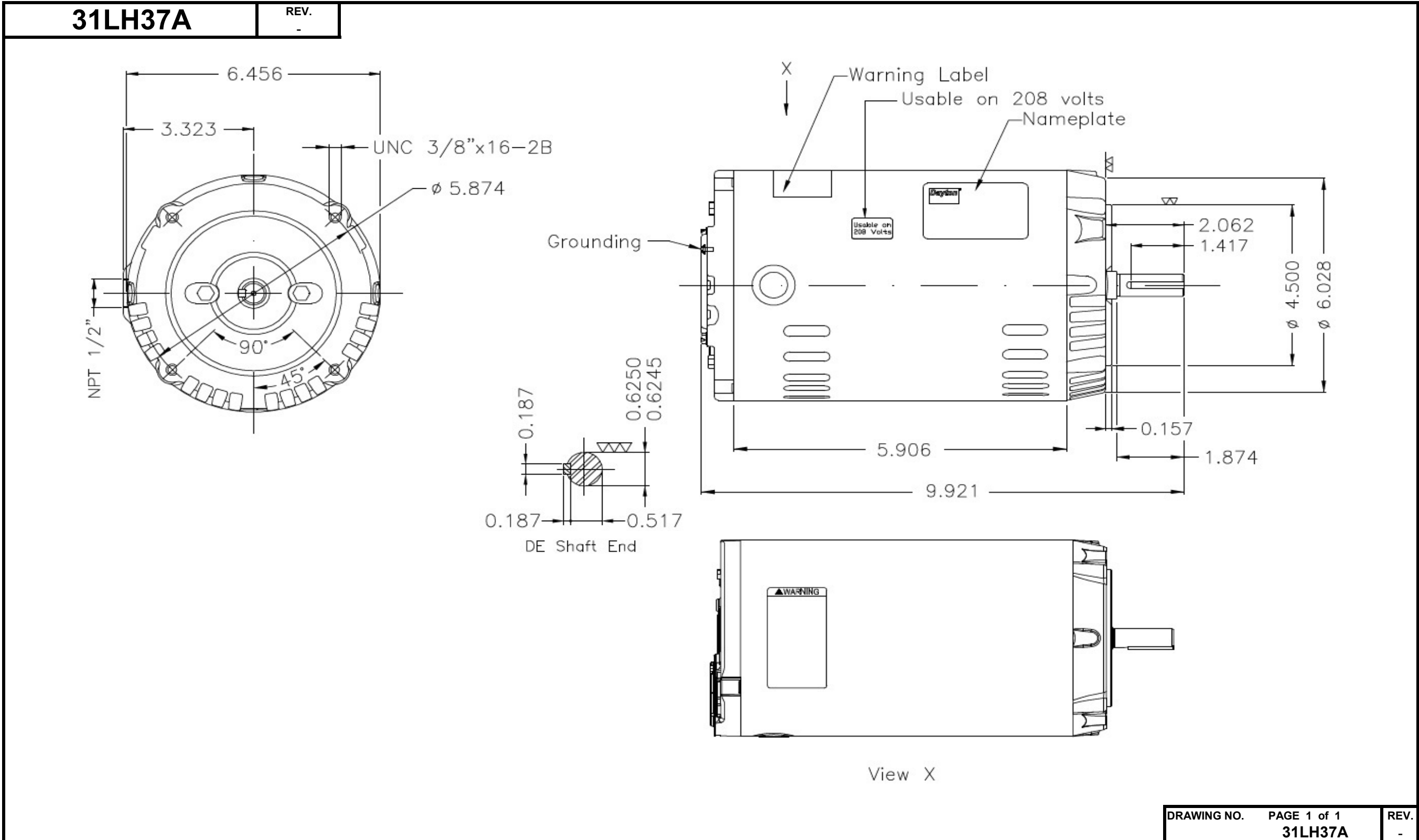


Dimensional Drawing



Dayton Electric Mfg. Co. Lake Forest, IL 60045 USA

DATA SHEET



Three Phase Induction Motor - Squirrel Cage

Customer :

Product line : W01 - ODP - Premium Efficiency

Frame	: 56C	Locked rotor time	: 38 s (hot) 68 s (cold)
Output	: 0.25 HP (0.18 kW)	Temperature rise ⁴	: 80 K
Poles	: 4	Duty cycle	: Cont.(S1)
Frequency	: 60 Hz	Ambient temperature	: -20 °C to +40 °C
Rated voltage	: 230/460 V	Altitude	: 1000 m.a.s.l
Rated current	: 1.07/0.533 A	Cooling method	: IC01 - ODP
L. R. Amperes	: 6.29/3.14 A	Mounting	: F-1
LRC (p.u.)	: 5.9 Code M	Direct of rotation ¹	: Both
No load current	: 1.00/0.500 A	Noise level ²	: 52.0 dB(A)
Rated speed	: 1765 rpm	Vibration class	: A
Slip	: 1.94 %	Starting method	: Direct On Line
Rated torque	: 1.01 Nm	Coupling	: Direct
Locked rotor torque	: 230 %	Approx. weight ³	: 7.1 kg
Pull up torque	: 195 %	Painting plan	: 207N
Breakdown torque	: 330 %	Color	: RAL 7021
Insulation class	: F		
Service factor	: 1.35		
Moment of inertia (J)	: 0.0016 kgm ²		

Output	Start	50%	75%	100%	Load type: -
Efficiency (%)	-	57.5	64.0	69.5	Load torque: -
Power factor	0.73	0.41	0.52	0.61	Load inertia (J=GD ² /4): -

	Drive end	Non drive end	Foundation loads
Bearing type	6203-ZZ	6202-ZZ	Maximum traction : 93 N
Lubrication interval	-	-	Maximum compression : 163 N
Lubricant amount	-	-	
Lubricant type	MOBIL POLYREX EM		

Notes:
 * Dayton # 31LH37A
 * Connection YY/Y - Document 10003174687

Standards	Specification	: MG1 - Part 10	Vibration	: MG1 - Part 7
	Tests	: MG1 - Part 12	Tolerance	: MG1 - Part 12
	Noise	: MG1 - Part 9		

This revision replaces and cancels the previous one, which must be eliminated.
 (1) When viewed from the drive end.
 (2) Measured at 1m and with tolerance of +3dB(A).
 (3) Approximate weight subject to changes after manufacturing process.
 (4) At the rated point.

These are average values based on tests with sinusoidal power supply, subject to the tolerances stipulated in NEMA MG 1-12.

Rev.	Summary of changes		Performed	Checked	Date
Performed by	mrsanchez			177480/2016-A	
Checked by	mmoctezuma			Page	Revision
Date	20/02/2018			1/2	1

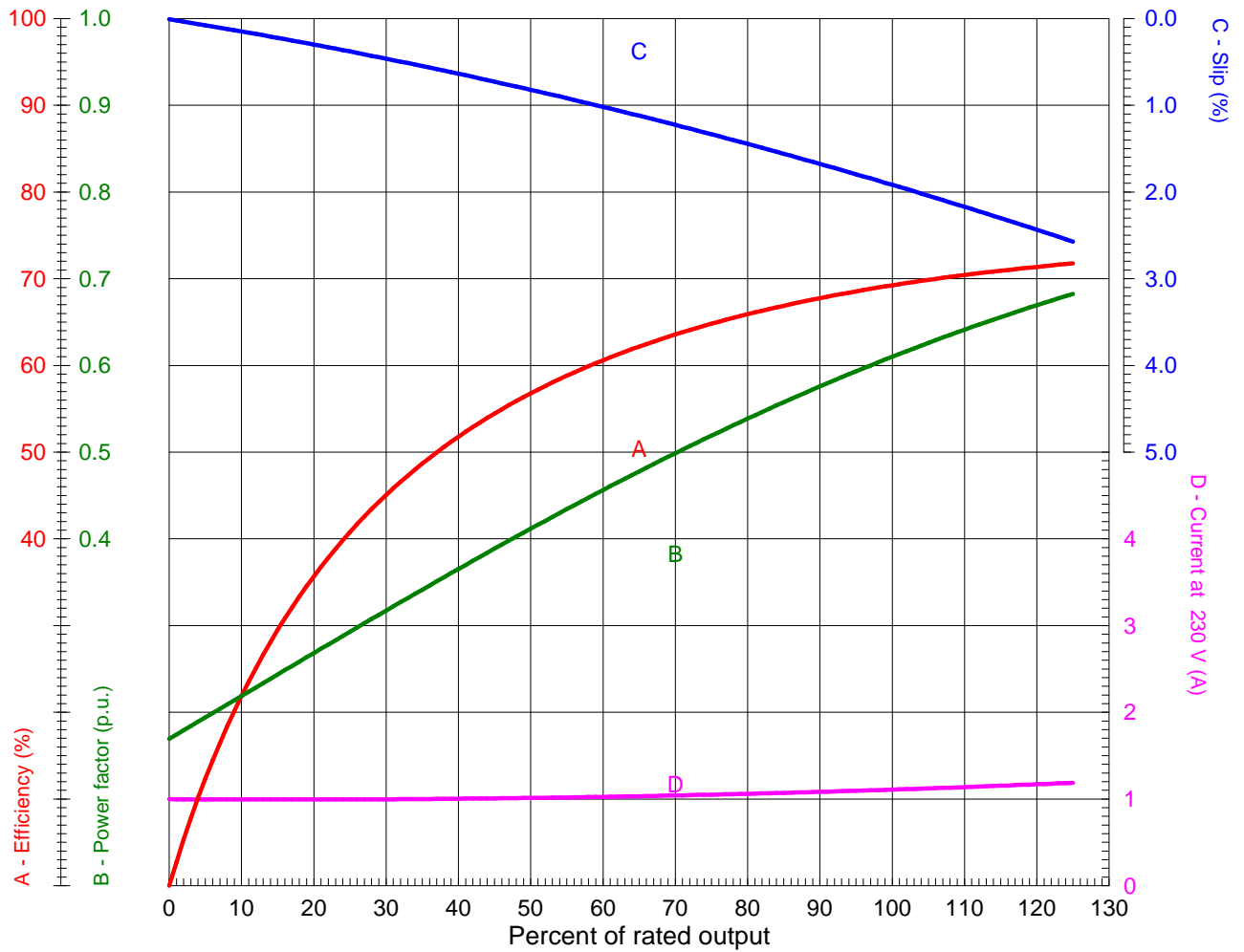
LOAD PERFORMANCE CURVE



Three Phase Induction Motor - Squirrel Cage

Customer : _____

Product line : W01 - ODP - Premium Efficiency



Performance : 0.25 HP (0.18 kW) 230/460 V 60 Hz 4P 56C

Rated current : 1.07/0.533 A	Moment of inertia (J) : 0.0016 kgm ²
LRC (p.u.) : 5.9 Code M	Duty cycle : Cont.(S1)
Rated torque : 1.01 Nm	Insulation class : F
Locked rotor torque : 230 %	Service factor : 1.35
Breakdown torque : 330 %	Temperature rise : 80 K
Rated speed : 1765 rpm	

Rev.	Summary of changes	Performed	Checked	Date
Performed by	mrsanchez			177480/2016-A1
Checked by	mmoctezuma			Page Revision
Date	20/02/2018			1/1 1

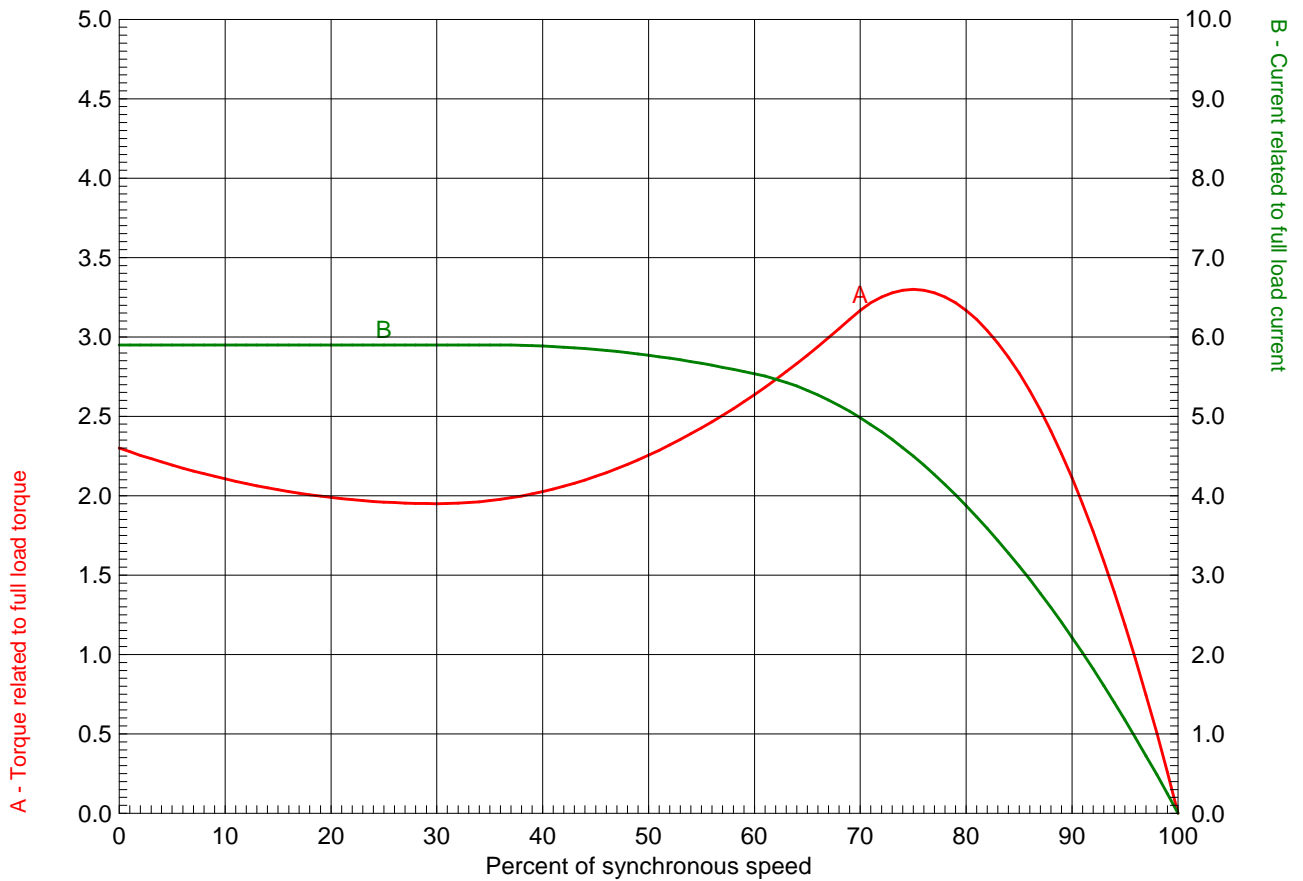
TORQUE AND CURRENT X SPEED CURVE



Three Phase Induction Motor - Squirrel Cage

Customer : _____

Product line : W01 - ODP - Premium Efficiency



Performance : 0.25 HP (0.18 kW) 230/460 V 60 Hz 4P 56C

Rated current : 1.07/0.533 A	Moment of inertia (J) : 0.0016 kgm ²
LRC (p.u.) : 5.9 Code M	Duty cycle : Cont.(S1)
Rated torque : 1.01 Nm	Insulation class : F
Locked rotor torque : 230 %	Service factor : 1.35
Breakdown torque : 330 %	Temperature rise : 80 K
Rated speed : 1765 rpm	

Locked rotor time 100% : 38 s (hot) 68 s (cold)
 Load inertia (J=GD²/4) : 0.0016 kgm²

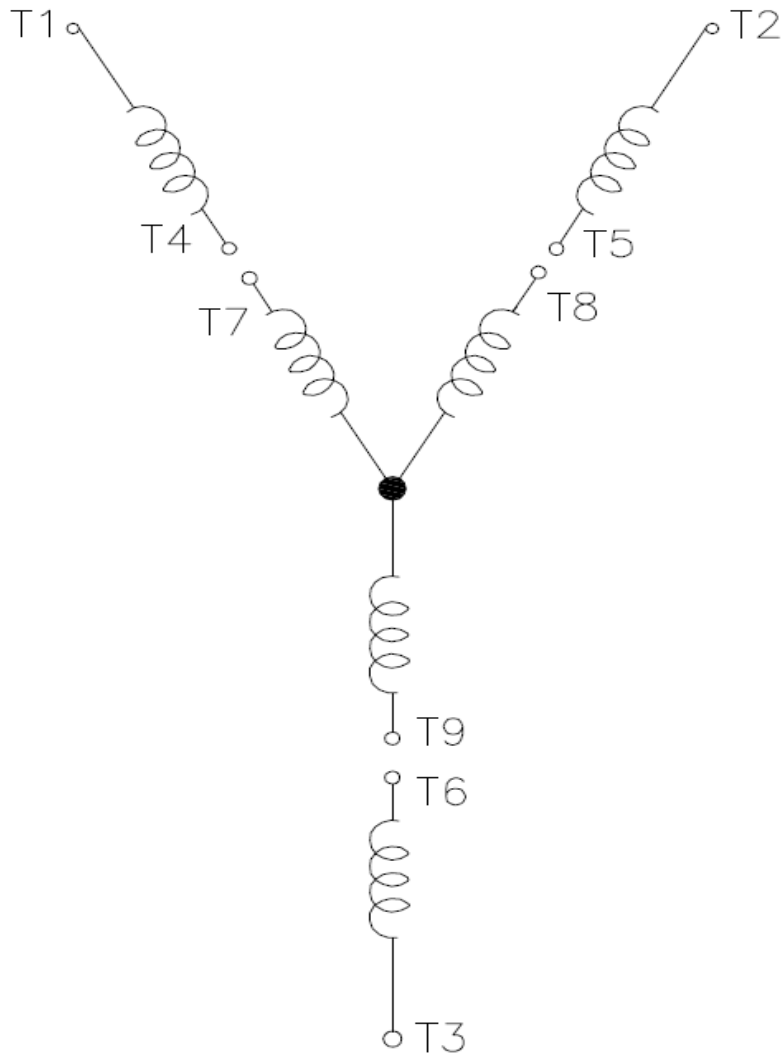
Rev.	Summary of changes	Performed	Checked	Date
Performed by	mrsanchez	177480/2016-A1		Page Revision
Checked by	mmoctezuma			
Date	20/02/2018			
			1/1	1

Wiring Diagram

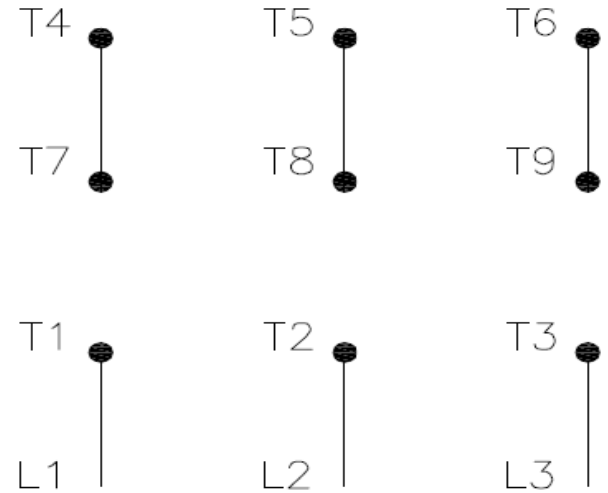


31LH37A

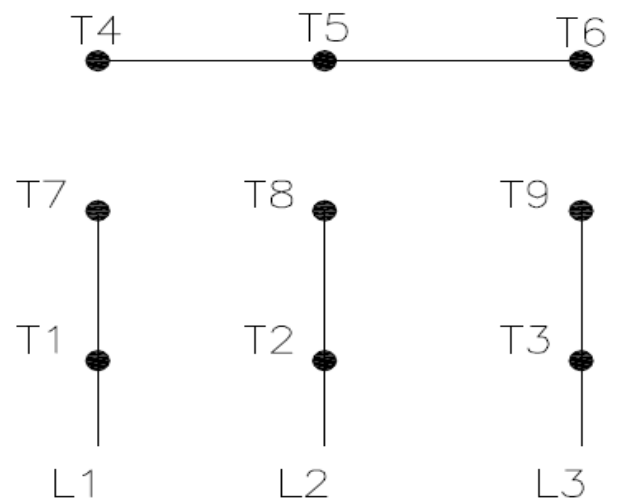
REV.
0



High Voltage (Y)



Low Voltage (YY)



- T1 — Blue
- T2 — White
- T3 — Orange
- T4 — Yellow
- T5 — Black
- T6 — Gray
- T7 — Pink
- T8 — Red
- T9 — Brick Red

Interchange any two line wires to reverse rotation.

DRAWING NO.	PAGE 1 of 1	REV.
31LH37A		0

01OUT18

Dayton

MADE IN MEXICO

NEMA
Premium

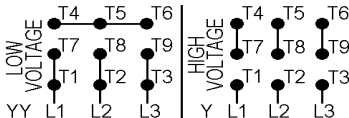
MODEL NO.

UL US**CE****SP** US**31LH37A**

TO0IC0X0X0000300172

MAT: 13775557

PH **3** HP (kW) **0.25(0.18)**
 HZ **60** V **230/460**
 RPM **1765** A **1.07/0.53**
 FR **56C** DES **B**
 IP **21** ENCL **ODP**
 AMB **40 °C** CODE **M**
 SF **1.35** INS **F** ΔT **80 K**
 SFA **1.4/0.7 A** PF **0.61**
 DUTY **CONT**
 AVG F.L. EFF. **69.5%**



T1-BLU T2-WHT T3-ORG T4-YEL T5-BLK
T6-GRY T7-PNK T8-RED T9-BRK RED

INTERCHANGE ANY TWO LINE WIRES TO REVERSE ROTATION

ALT. RATING: 190-220/380-415V 50Hz
0.25HP 1.14-1.15/0.57-0.61 A 1455 RPM S.F. 1.35

S/N:

Mfd. for Dayton Electric Mfg. Co., Lake Forest, IL 60045 USA