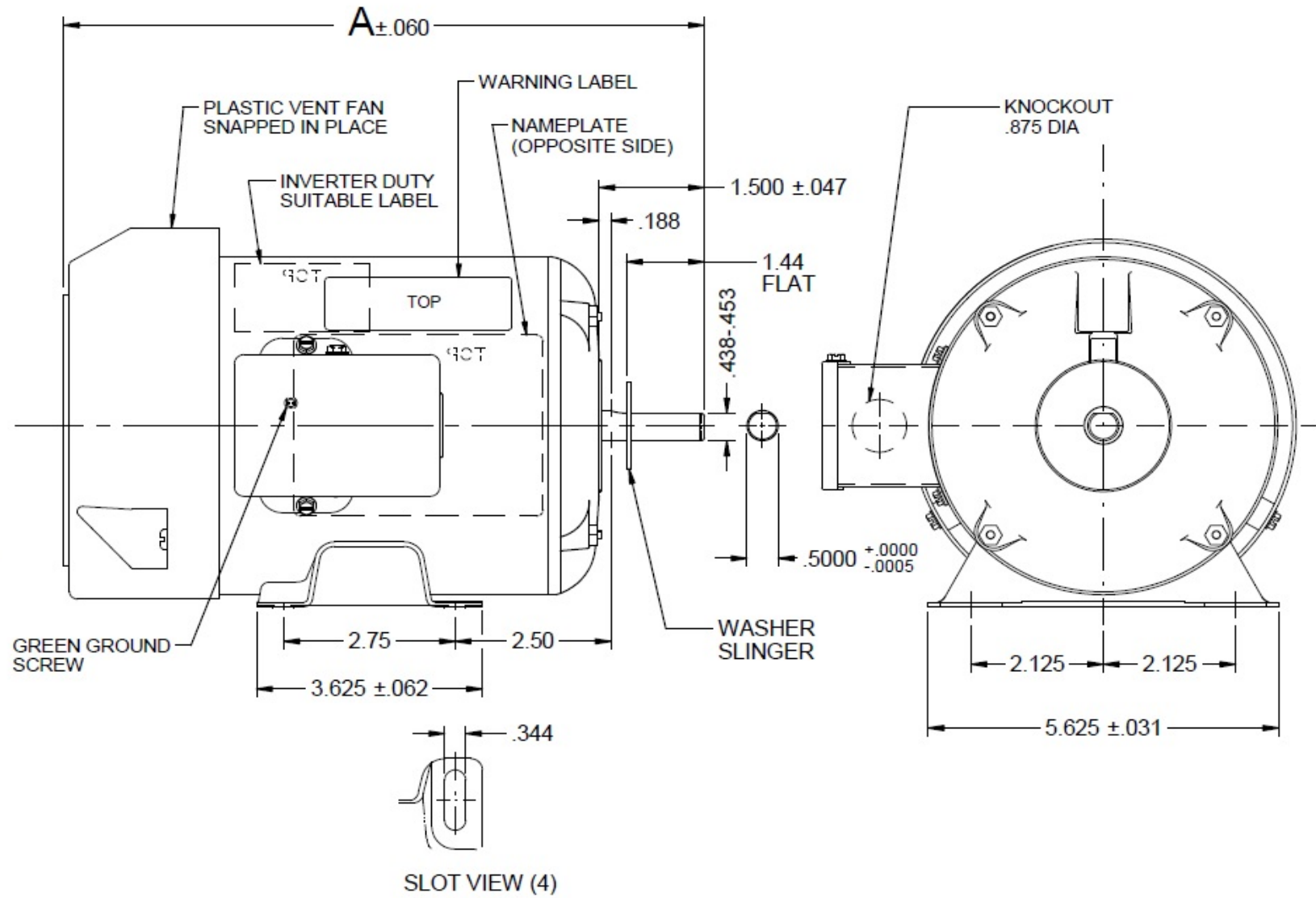
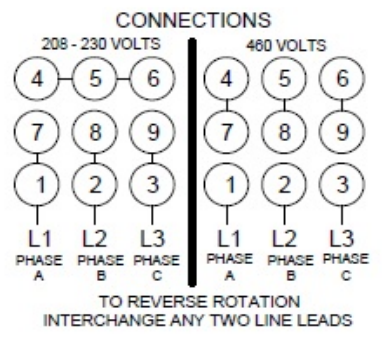
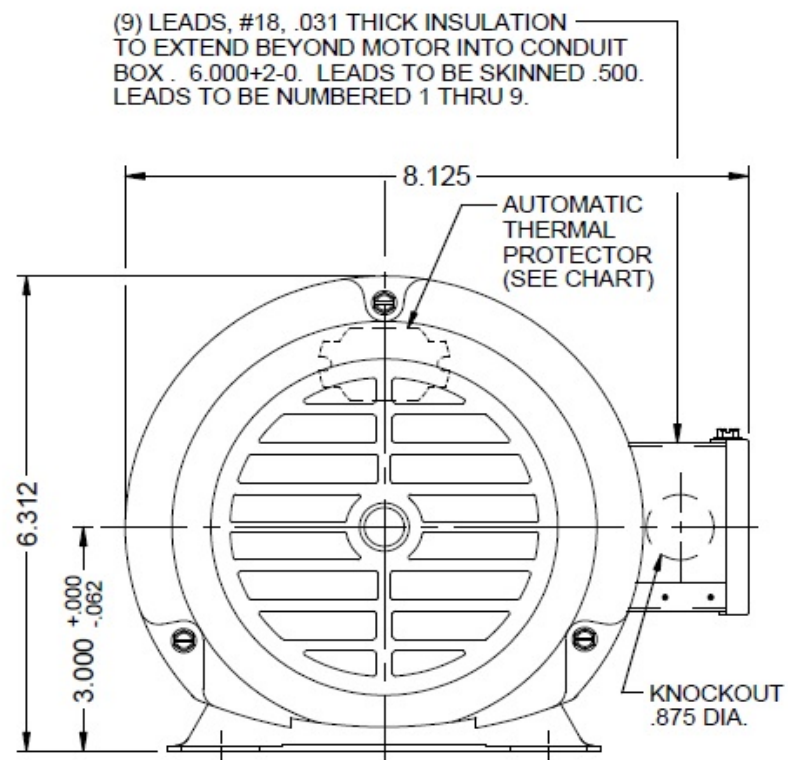


Dimensional Drawing



10C899B REV. -

VAR	MODEL	CUST. PT. NO.	A	B	C	D	HP	VOLTS	SF	AMPS	HZ	RPM	CONN VOLTS	PROT.	DESCRIPTION / REMARKS
001	P55DHK-1616	10C899B	11.514	----	----	----	3/4	208-230/460	1.0	2.8-2.8/1.5	60&50	1725&1425	460	NONE	48, TEFC BALL BEARING, 2:1 CONSTANT TORQUE



DRAWING NO. PAGE 1 of 1 REV.
10C899B -

Performance Data



10C899B

REV.
-

THREE PHASE MOTOR PERFORMANCE

HP:	3/4					
Poles:	4					
Volts:	208-230/460	208	230	460	190	380
HZ:	60/50	60	60	60	50	50
Service Factor:	1					
Efficiency (%):	Full Load	78.8	78.5	78.2	76.9	77.5
	Service Factor					
	3/4					
	1/2					
	1/4					
Power Factor (%):	Full Load	73.6	66.9	66.2	68.3	67.2
	Service Factor					
	3/4					
	1/2					
	1/4					
Amps:	Full Load	2.7	2.7	1.4	3	1.5
	Service Factor	2.9	2.9	1.5	-	-
	3/4					
	1/2					
	1/4					
	No Load					
	Locked Rotor	17	17.8	9.2	16.2	5.5
NEMA Code Letter:						
NEMA Design Letter:						
Full Load RPM:		1715	1722	1723	1404	1416
NEMA Nominal Efficiency (%):						
Guaranteed Efficiency (%):						
Max KVAR:						
Ambient (°C):	40					
Altitude (FASL):						
Full Load Torque	Lb.Ft. / Oz.Ft. (Circle One)	36.7	36.6	36.6	44.9	44.5
Torques: % Full-Load	Breakdown	147.2	172.2	176.2	153.1	163.1
	Locked Rotor	137.9	172.1	173.8	160.4	162.2
	Pull-Up	137.9	167.8	172.3	151.9	158.5
	Service Factor	42.6	42.4	42.3	-	-
Temperature Rise:	Full Load	51.8	53.8	55	63.8	63.5
	Service Factor	59.8	62.7	60.4	-	-
Winding Material:	Cu					
Notes:						

DRAWING NO. PAGE 1 of 1 REV.
10C899B -

Dayton Electric Mfg. Co. Lake Forest, IL 60045 USA

Performance Data



10C899B	REV. -
----------------	-----------

Dayton Manufacturing Company

Motor Description

Model: P055DHK1616 10C899B
 Motor ID: 1 of 1
 Poles: 4
 Volts: 208-230/460
 Frequency: 60
 HP: 3/4
 Speed: 1725
 Phase: 3
 Protector: -

Test Conditions

Test Type: Start
 Test Number: 13
 Poles: 4
 Volts: 230
 Hz: 60
 Rotation:
 Special Cond:
 Speed Conn:
 TestBoard: CMD InLine Three Phase #2 Fixture #1
 Run Cap: 0
 Start Cap: 0µfd
 Environment: 24.4 Deg C 52 % RH 971 hPa
 Tested: 4/5/2016 9:22:58 AM
 Tested By: Navarro, Susana
 Gear Ratio: 1:1
 Bearing Friction: -0.19 Oz-Ft
 Windage Torque: -1.31 Oz-Ft

Special Points	Vab(V)	Vbc(V)	Vca(V)	Ia(A)	Ib(A)	Ic(A)	Watts	RPM	Tq(Oz-ft)	HP	Eff (%)	PF (%)
	229.7	230.1	230.2	17.832	17.835	17.764	5363	0	172.08	0.000	0.0	75.6
	229.7	230.0	230.2	17.131	17.098	17.119	5239	190	172.51	0.390	5.6	76.8
	229.7	230.0	230.2	16.399	16.405	16.403	5100	342	175.69	0.714	10.5	78.1
	229.7	230.0	230.2	15.648	15.653	15.650	4941	486	176.16	1.019	15.4	79.2
	229.7	230.0	230.2	14.837	14.867	14.843	4758	621	177.67	1.313	20.6	80.4
	229.7	230.0	230.2	14.047	14.065	14.058	4567	741	177.16	1.563	25.5	81.6
	229.7	230.0	230.2	13.231	13.246	13.243	4359	853	175.58	1.782	30.5	82.6
	229.7	230.0	230.2	12.373	12.380	12.372	4126	958	172.33	1.966	35.5	83.7
PUT OZ-FT	229.7	230.0	230.3	11.494	11.501	11.497	3878	1056	167.76	2.109	40.6	84.7
	229.7	230.0	230.3	11.494	11.501	11.497	3878	1056	167.76	2.109	40.6	84.7
	229.8	230.0	230.2	10.569	10.568	10.568	3603	1149	161.63	2.211	45.8	85.6
	229.8	230.0	230.2	9.682	9.679	9.677	3329	1231	154.05	2.258	50.6	86.3
	229.8	230.0	230.3	8.843	8.836	8.838	3060	1303	145.30	2.253	54.9	86.9
	229.8	230.0	230.3	7.986	7.977	7.978	2774	1371	135.17	2.206	59.3	87.3
	229.8	230.0	230.3	7.137	7.122	7.128	2483	1434	123.84	2.114	63.5	87.4
	229.8	230.0	230.2	6.326	6.305	6.314	2193	1490	111.56	1.979	67.3	87.2
	229.8	230.0	230.2	5.604	5.573	5.590	1927	1538	99.55	1.823	70.6	86.6
	229.8	230.0	230.2	4.938	4.897	4.923	1675	1581	87.46	1.646	73.3	85.5
	229.8	230.0	230.2	4.163	4.101	4.148	1371	1627	72.57	1.406	76.5	83.2
	229.8	230.0	230.2	3.736	3.680	3.726	1190	1655	62.65	1.235	77.4	80.5
	229.8	229.9	230.2	3.271	3.207	3.265	991	1684	51.78	1.038	78.1	76.6
	229.9	229.9	230.2	2.885	2.817	2.887	808	1710	41.52	0.845	78.0	70.8
	229.9	229.9	230.2	2.566	2.495	2.576	648	1730	32.27	0.665	76.5	63.9
	229.9	229.9	230.2	2.345	2.272	2.365	515	1748	24.52	0.510	73.9	55.6
	229.9	229.9	230.2	2.174	2.102	2.205	400	1762	17.65	0.370	69.0	46.5
	229.9	229.9	230.1	2.078	2.004	2.117	302	1774	11.81	0.249	61.7	36.6
	229.9	229.9	230.1	2.021	1.945	2.065	238	1782	8.04	0.171	53.4	29.7
	230.0	229.8	230.2	2.015	1.943	2.070	178	1789	4.42	0.094	39.4	22.3
	230.0	229.8	230.2	1.967	1.886	2.025	135	1794	1.47	0.031	17.3	17.3
	230.0	229.9	230.1	1.945	1.863	2.005	112	1797	0.00	0.000	0.0	14.5

DRAWING NO.	PAGE 1 of 8	REV.
10C899B		-

Dayton Electric Mfg. Co. Lake Forest, IL 60045 USA

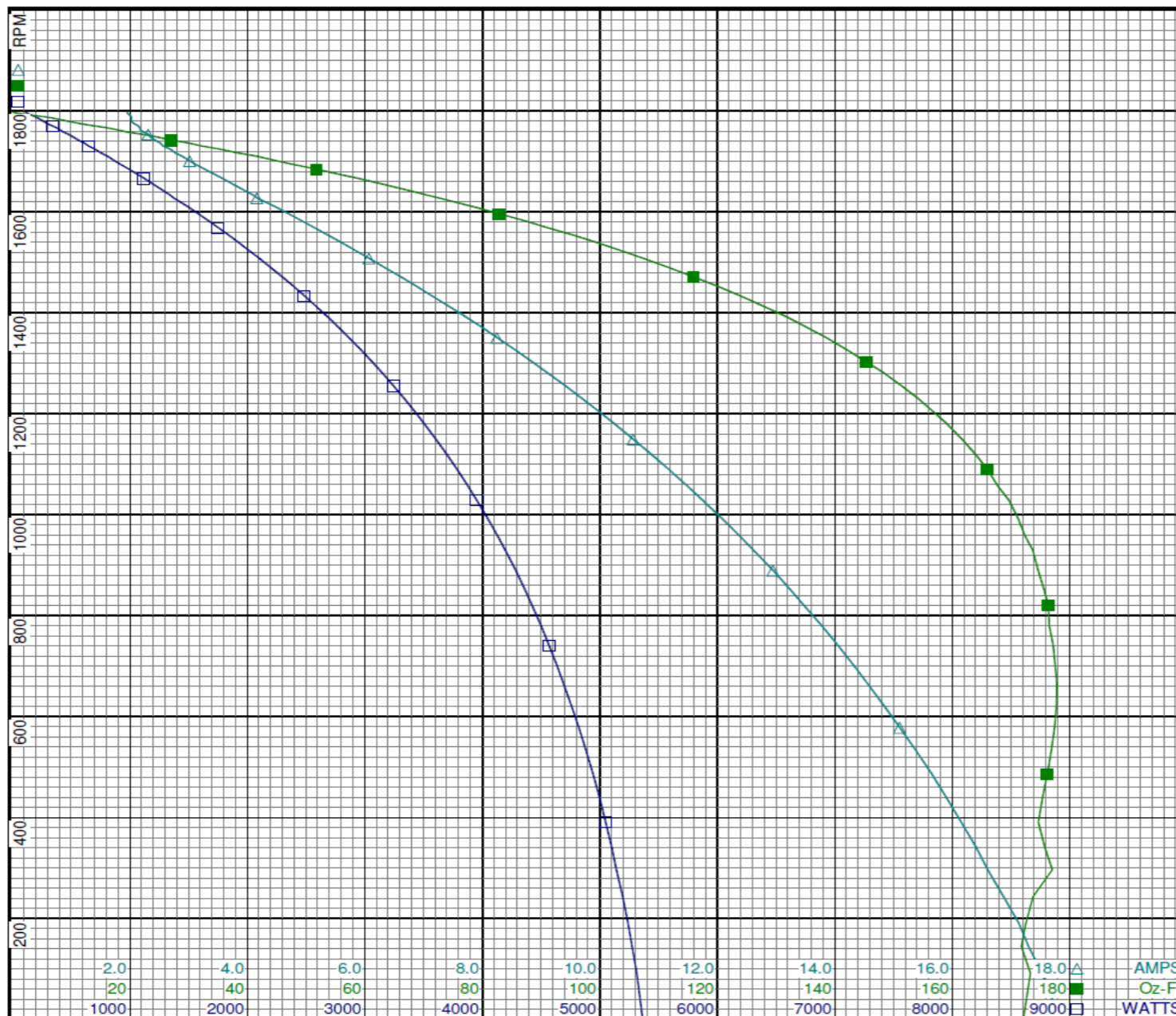
Performance Data



10C899B

REV.

-



Curve Descriptions:

Motor(1) Test 13 Start 230V 60 Hz 4P

- SPEED vs WATTS
- SPEED vs TORQUE
- △ SPEED vs Ia

Motor Ratings:

(1) P055DHK1616 ID: 1 of 1 10C899B

2.0 4.0 6.0 8.0 10.0 12.0 14.0 16.0 18.0 AMPS
 20 40 60 80 100 120 140 160 180 Oz-Ft
 1000 2000 3000 4000 5000 6000 7000 8000 9000 WATTS

DRAWING NO.	PAGE 2 of 8	REV.
10C899B		-

Dayton Electric Mfg. Co. Lake Forest, IL 60045 USA

Performance Data



10C899B		REV.										
		-										
Dayton Manufacturing Company												
Motor Description				Test Conditions								
Model:	P055DHK1616	10C899B	Test Type:	Run	Run Cap:	0						
Motor ID:	1 of 1		Test Number:	12	Start Cap:	0µfd						
Poles:	4		Poles:	4	Environment:	24.3 Deg C 51 % RH 972 hPa						
Volts:	208-230/460		Volts:	230	Tested:	4/5/2016 9:19:17 AM						
Frequency:	60		Hz:	60	Tested By:	Navarro, Susana						
HP:	3/4		Rotation:		Gear Ratio:	1:1						
Speed:	1725		Special Cond:		Bearing Friction:	-0.20 Oz-Ft						
Phase:	3		Speed Conn:		Windage Torque:	-1.13 Oz-Ft						
Protector:	-		TestBoard:	CMD InLine Three Phase #2 Fixture #1								
Special Points	Vab (V)	Vbc (V)	Vca (V)	Ia (A)	Ib (A)	Ic (A)	Watts	RPM	Tq (Oz-ft)	HP	Eff (%)	PF (%)
	229.9	230.0	230.1	1.938	1.853	1.993	106	1797	0.00	0.000	0.0	13.8
	229.9	230.0	230.1	1.963	1.878	2.011	133	1794	1.93	0.041	23.2	17.1
	229.8	230.2	230.0	2.016	1.940	2.066	181	1789	4.54	0.097	39.8	22.7
	229.8	230.2	230.0	2.040	1.964	2.087	223	1783	7.07	0.150	50.2	27.6
	229.8	230.1	230.1	2.062	1.985	2.101	289	1774	11.19	0.236	61.0	35.4
	229.8	230.0	230.1	2.179	2.110	2.216	374	1762	16.16	0.339	67.7	43.3
	229.9	229.9	230.2	2.196	2.131	2.233	382	1747	16.51	0.343	67.1	43.8
	229.8	230.0	230.2	2.587	2.514	2.600	641	1731	32.29	0.666	77.4	62.7
36.52 OZ-FT	229.8	230.0	230.2	2.693	2.616	2.699	712	1722	36.52	0.749	78.5	66.9
0.75 HP	229.8	230.0	230.2	2.696	2.619	2.702	713	1722	36.59	0.750	78.5	67.0
42 OZ-FT	229.8	230.0	230.2	2.887	2.809	2.888	808	1710	42.00	0.855	78.9	70.9
0.862 HP	229.8	230.0	230.2	2.897	2.819	2.897	814	1709	42.36	0.862	79.0	71.2
	229.8	230.0	230.2	2.901	2.822	2.901	817	1709	42.51	0.865	79.0	71.3
	229.8	230.0	230.2	3.292	3.213	3.285	999	1685	52.91	1.061	79.3	76.8
	229.9	229.9	230.2	3.821	3.746	3.807	1225	1654	65.31	1.286	78.3	81.1
	229.8	229.9	230.2	4.407	4.330	4.388	1465	1620	78.08	1.506	76.7	84.1
	229.8	229.9	230.2	5.065	4.976	5.042	1721	1582	91.00	1.714	74.3	85.9
	229.8	230.0	230.2	5.748	5.673	5.723	1981	1540	103.85	1.904	71.7	87.0
	229.8	230.0	230.2	6.549	6.485	6.526	2272	1490	117.03	2.075	68.1	87.5
	229.8	230.0	230.2	7.366	7.335	7.341	2560	1436	129.29	2.210	64.4	87.5
	229.8	230.0	230.2	8.259	8.196	8.234	2865	1372	141.27	2.308	60.1	87.4
	229.8	230.0	230.2	9.288	9.249	9.266	3200	1294	152.28	2.346	54.7	86.7
	229.8	230.0	230.2	10.051	9.992	10.027	3442	1229	160.63	2.350	50.9	86.2
	229.8	230.0	230.2	10.917	10.862	10.892	3706	1149	168.11	2.300	46.3	85.4
BDT OZ-FT	229.8	230.0	230.2	11.488	11.431	11.464	3873	1093	172.17	2.240	43.1	84.8
	229.8	230.0	230.2	11.799	11.748	11.779	3963	1060	174.07	2.197	41.4	84.5
	229.8	230.1	230.2	12.686	12.642	12.668	4210	960	178.54	2.041	36.2	83.5
	229.8	230.1	230.1	13.520	13.476	13.504	4431	855	181.16	1.845	31.1	82.4
	229.8	230.1	230.1	14.324	14.284	14.303	4631	741	182.28	1.609	25.9	81.3
	229.8	230.1	230.1	15.066	15.024	15.036	4808	622	182.53	1.352	21.0	80.2
	229.8	230.1	230.1	15.769	15.721	15.742	4965	493	181.32	1.064	16.0	79.2
	229.8	230.1	230.1	16.471	16.428	16.446	5112	346	179.65	0.740	10.8	78.0
	229.8	230.1	230.1	17.051	17.024	17.029	5225	199	177.10	0.419	6.0	77.0
DRAWING NO.										PAGE 3 of 8		REV.
										10C899B		-

Dayton Electric Mfg. Co. Lake Forest, IL 60045 USA

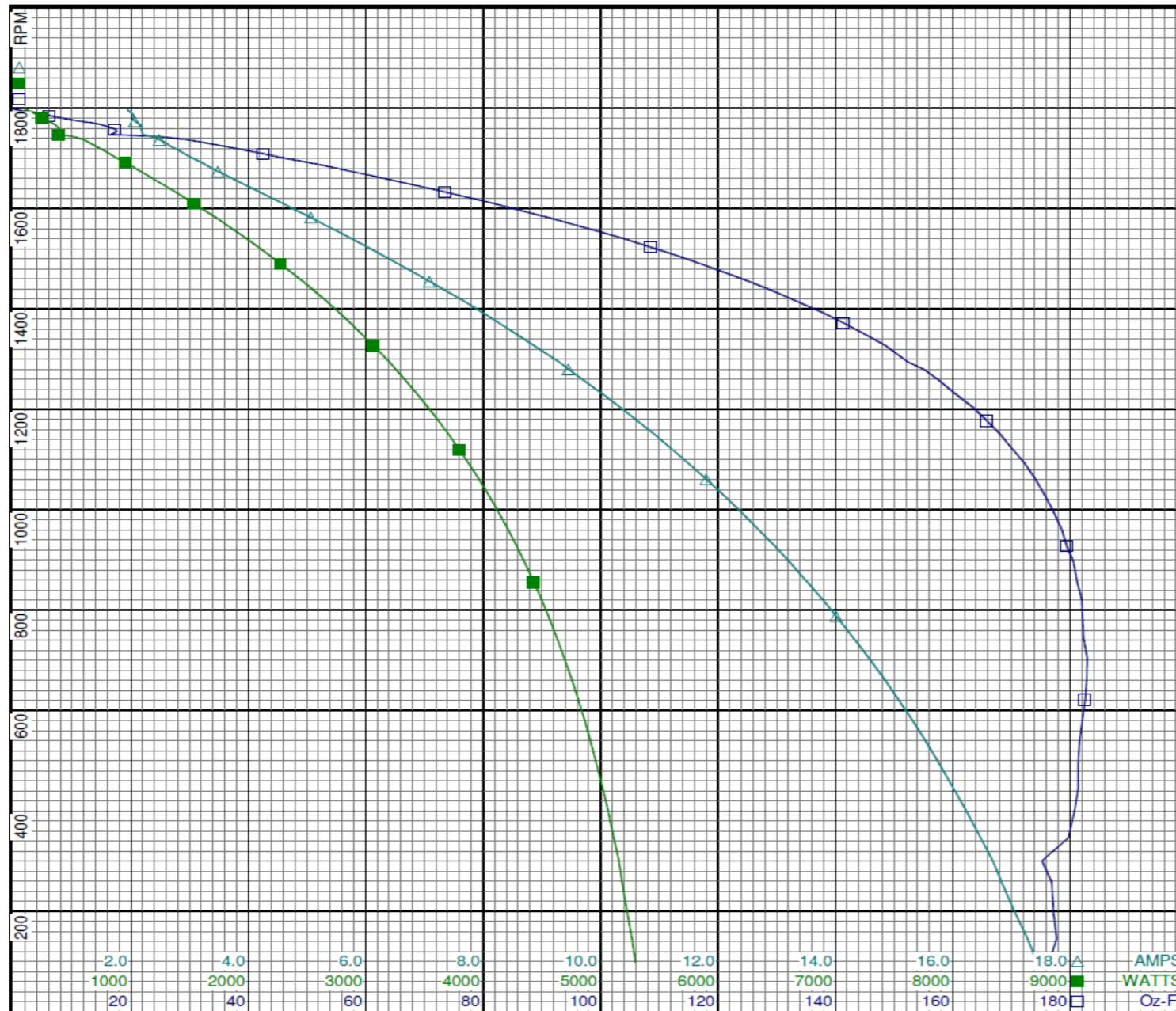
Performance Data



10C899B

REV.

-



Curve Descriptions:

Motor(1) Test 12 Run 230V 60 Hz 4P

- SPEED vs TORQUE
- SPEED vs WATTS
- △ SPEED vs Ia

Motor Ratings:

(1) P055DHK1616 ID: 1 of 1 10C899B

DRAWING NO.	PAGE 4 of 8	REV.
10C899B		-

Dayton Electric Mfg. Co. Lake Forest, IL 60045 USA

Performance Data



10C899B REV.
-

Dayton Manufacturing Company

Motor Description

Model: P055DHK1616 10C899B
 Motor ID: 1 of 1
 Poles: 4
 Volts: 208-230/460
 Frequency: 60
 HP: 3/4
 Speed: 1725
 Phase: 3
 Protector: -

Test Conditions

Test Type: Start Run Cap: 0
 Test Number: 19 Start Cap: 0µfd
 Poles: 4 Environment: 25.0 Deg C 53 % RH 966 hPa
 Volts: 460 Tested: 4/6/2016 9:06:21 AM
 Hz: 60 Tested By: Navarro, Susana
 Rotation: Gear Ratio: 1:1
 Special Cond: Bearing Friction: -0.24 Oz-Ft
 Speed Conn: Windage Torque: -1.17 Oz-Ft
 TestBoard: CMD InLine Three Phase #2 Fixture #1

Special Points	Vab (V)	Vbc (V)	Vca (V)	Ia (A)	Ib (A)	Ic (A)	Watts	RPM	Tq (Oz-ft)	HP	Eff (%)	PF (%)
	459.7	459.8	460.5	9.150	9.171	9.193	5444	0	173.76	0.000	0.0	74.5
	459.7	459.8	460.5	8.795	8.809	8.810	5321	193	173.80	0.398	5.6	75.8
	459.7	459.8	460.5	8.446	8.444	8.453	5187	344	176.90	0.724	10.4	77.1
	459.7	459.8	460.5	8.068	8.065	8.072	5038	485	178.96	1.033	15.3	78.4
	459.7	459.8	460.5	7.671	7.663	7.675	4865	617	180.31	1.324	20.3	79.6
	459.7	459.7	460.6	7.257	7.256	7.259	4674	740	180.77	1.593	25.4	80.8
	459.7	459.7	460.5	6.828	6.825	6.831	4463	854	179.45	1.824	30.5	82.0
	459.7	459.7	460.6	6.391	6.383	6.390	4232	960	176.77	2.020	35.6	83.2
PUT OZ-FT	459.7	459.7	460.6	5.950	5.945	5.951	3990	1055	172.31	2.164	40.5	84.2
	459.7	459.7	460.6	5.950	5.945	5.951	3990	1055	172.31	2.164	40.5	84.2
	459.7	459.7	460.6	5.486	5.478	5.486	3721	1146	166.32	2.270	45.5	85.2
	459.7	459.7	460.6	5.027	5.018	5.024	3442	1229	158.92	2.325	50.4	86.0
	459.7	459.7	460.6	4.575	4.564	4.572	3156	1304	149.89	2.327	55.0	86.7
	459.7	459.7	460.6	4.144	4.130	4.141	2873	1370	139.72	2.279	59.2	87.1
	459.7	459.7	460.6	3.715	3.699	3.710	2582	1432	128.54	2.191	63.3	87.4
	459.7	459.7	460.5	3.293	3.275	3.287	2285	1489	116.09	2.057	67.2	87.3
	459.8	459.7	460.5	2.911	2.890	2.904	2008	1537	103.77	1.899	70.6	86.8
	459.8	459.7	460.5	2.551	2.526	2.544	1736	1582	90.70	1.708	73.4	85.8
	459.8	459.7	460.5	2.228	2.200	2.221	1484	1620	78.10	1.506	75.7	84.1
	459.8	459.7	460.5	1.930	1.912	1.926	1241	1655	65.31	1.287	77.4	81.0
	459.8	459.7	460.5	1.693	1.669	1.691	1039	1683	54.38	1.090	78.2	77.4
	459.9	459.6	460.5	1.484	1.458	1.486	844	1709	43.48	0.885	78.2	71.8
	459.8	459.7	460.5	1.313	1.283	1.318	680	1730	34.06	0.701	77.0	65.4
	459.9	459.6	460.5	1.202	1.172	1.212	544	1747	26.13	0.543	74.5	57.1
	459.9	459.6	460.5	1.108	1.077	1.123	422	1762	18.89	0.396	70.1	48.0
	459.9	459.7	460.4	1.041	1.009	1.061	316	1774	12.51	0.264	62.5	38.2
	459.9	459.6	460.5	1.027	0.996	1.050	249	1782	8.51	0.181	54.1	30.5
	460.0	459.5	460.5	1.001	0.966	1.027	181	1789	4.46	0.095	39.2	22.8
	459.9	459.6	460.4	0.978	0.939	1.004	141	1794	1.69	0.036	19.1	18.2
	459.8	460.0	460.3	0.969	0.929	0.996	115	1797	0.00	0.000	0.0	14.9

DRAWING NO. PAGE 5 of 8 REV.
10C899B -

Dayton Electric Mfg. Co. Lake Forest, IL 60045 USA

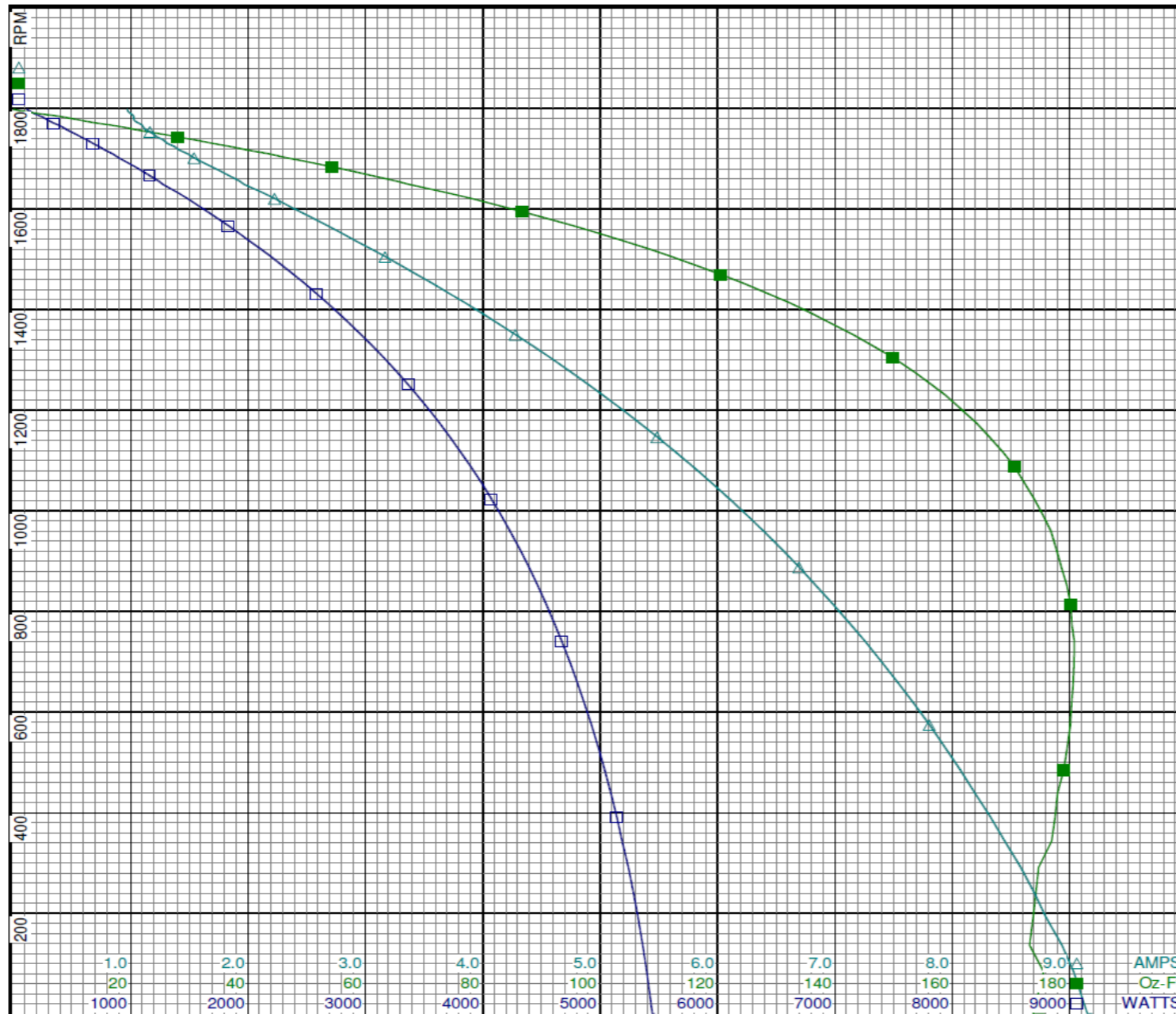
Performance Data



10C899B

REV.

-



Curve Descriptions:

Motor(1) Test 19 Start 460V 60 Hz 4P

- SPEED vs WATTS
- SPEED vs TORQUE
- △ SPEED vs Ia

Motor Ratings:

(1) P055DHK1616 ID: 1 of 1 10C899B

DRAWING NO.	PAGE 6 of 8	REV.
10C899B		-

Dayton Electric Mfg. Co. Lake Forest, IL 60045 USA

Performance Data



10C899B		REV.										
Dayton Manufacturing Company												
Motor Description		Test Conditions										
Model:	P055DHK1616 10C899B	Test Type:	Run	Run Cap:	0							
Motor ID:	1 of 1	Test Number:	18	Start Cap:	0µfd							
Poles:	4	Poles:	4	Environment:	25.0 Deg C 53 % RH 966 hPa							
Volts:	208-230/460	Volts:	460	Tested:	4/6/2016 9:04:58 AM							
Frequency:	60	Hz:	60	Tested By:	Navarro, Susana							
HP:	3/4	Rotation:		Gear Ratio:	1:1							
Speed:	1725	Special Cond:		Bearing Friction:	-0.27 Oz-Ft							
Phase:	3	Speed Conn:		Windage Torque:	-1.29 Oz-Ft							
Protector:	-	TestBoard:	CMD InLine Three Phase #2 Fixture #1									
Special Points	Vab (V)	Vbc (V)	Vca (V)	Ia (A)	Ib (A)	Ic (A)	Watts	RPM	Tq (Oz-ft)	HP	Eff (%)	PF (%)
	459.9	459.9	460.2	0.972	0.929	0.997	108	1795	0.00	0.000	0.0	14.0
	459.7	460.3	460.0	0.982	0.939	1.002	156	1791	3.06	0.065	31.2	20.1
	459.7	460.2	460.1	1.014	0.974	1.032	223	1785	6.68	0.142	47.5	27.8
	459.7	460.1	460.1	1.050	1.015	1.070	277	1777	10.22	0.216	58.2	33.3
	459.8	460.0	460.2	1.083	1.047	1.097	371	1767	15.95	0.335	67.5	43.3
	459.8	460.0	460.2	1.152	1.115	1.161	480	1753	22.47	0.469	72.8	52.7
	459.9	459.7	460.4	1.179	1.145	1.188	510	1736	24.02	0.496	72.6	54.7
36.52 OZ-FT	459.7	460.0	460.3	1.363	1.326	1.365	714	1723	36.52	0.749	78.2	66.2
0.75 HP	459.7	460.0	460.3	1.364	1.327	1.366	714	1723	36.56	0.750	78.3	66.2
	459.7	459.9	460.3	1.419	1.381	1.418	781	1717	40.41	0.826	78.9	69.7
42 OZ-FT	459.8	459.9	460.3	1.451	1.414	1.450	809	1714	42.00	0.857	79.0	70.6
0.862 HP	459.8	459.9	460.3	1.457	1.420	1.455	814	1713	42.27	0.862	79.0	70.8
	459.8	459.9	460.4	1.630	1.593	1.625	982	1692	51.75	1.042	79.2	76.2
	459.8	459.8	460.4	1.884	1.848	1.876	1198	1664	63.80	1.264	78.7	80.5
	459.8	459.8	460.4	2.164	2.129	2.154	1430	1633	76.29	1.483	77.4	83.5
	459.8	459.8	460.5	2.496	2.463	2.486	1691	1596	89.71	1.704	75.2	85.6
	459.7	459.8	460.5	2.863	2.832	2.852	1971	1554	103.47	1.914	72.4	86.8
	459.7	459.8	460.5	3.273	3.245	3.261	2268	1506	117.12	2.099	69.1	87.3
	459.7	459.8	460.5	3.692	3.665	3.681	2565	1452	130.01	2.248	65.4	87.5
	459.7	459.8	460.5	4.133	4.108	4.123	2865	1393	141.99	2.355	61.3	87.2
	459.7	459.8	460.5	4.585	4.560	4.575	3161	1328	152.82	2.416	57.0	86.8
	459.7	459.8	460.5	5.035	5.016	5.028	3446	1256	162.15	2.425	52.5	86.1
	459.6	459.8	460.5	5.482	5.464	5.475	3717	1179	169.79	2.384	47.8	85.2
BDT OZ-FT	459.7	459.8	460.5	5.946	5.930	5.939	3986	1091	176.17	2.288	42.8	84.2
	459.7	459.8	460.5	5.946	5.930	5.939	3986	1091	176.17	2.288	42.8	84.2
	459.7	459.8	460.5	6.391	6.376	6.381	4231	997	180.91	2.146	37.8	83.2
	459.6	459.8	460.5	6.819	6.804	6.814	4457	894	183.94	1.958	32.8	82.1
	459.6	459.8	460.5	7.231	7.220	7.225	4662	783	185.29	1.727	27.6	81.0
	459.6	459.8	460.5	7.612	7.606	7.603	4840	666	185.44	1.471	22.7	79.9
	459.7	459.8	460.5	7.978	7.975	7.973	5002	538	183.97	1.179	17.6	78.7
	459.6	459.8	460.5	8.329	8.323	8.322	5146	399	182.14	0.864	12.5	77.6
	459.6	459.8	460.5	8.632	8.645	8.633	5261	251	179.20	0.536	7.6	76.4
	459.6	459.8	460.5	8.943	8.937	8.939	5370	91	177.76	0.193	2.7	75.4
DRAWING NO. 10C899B											PAGE 7 of 8	REV.
10C899B											-	-

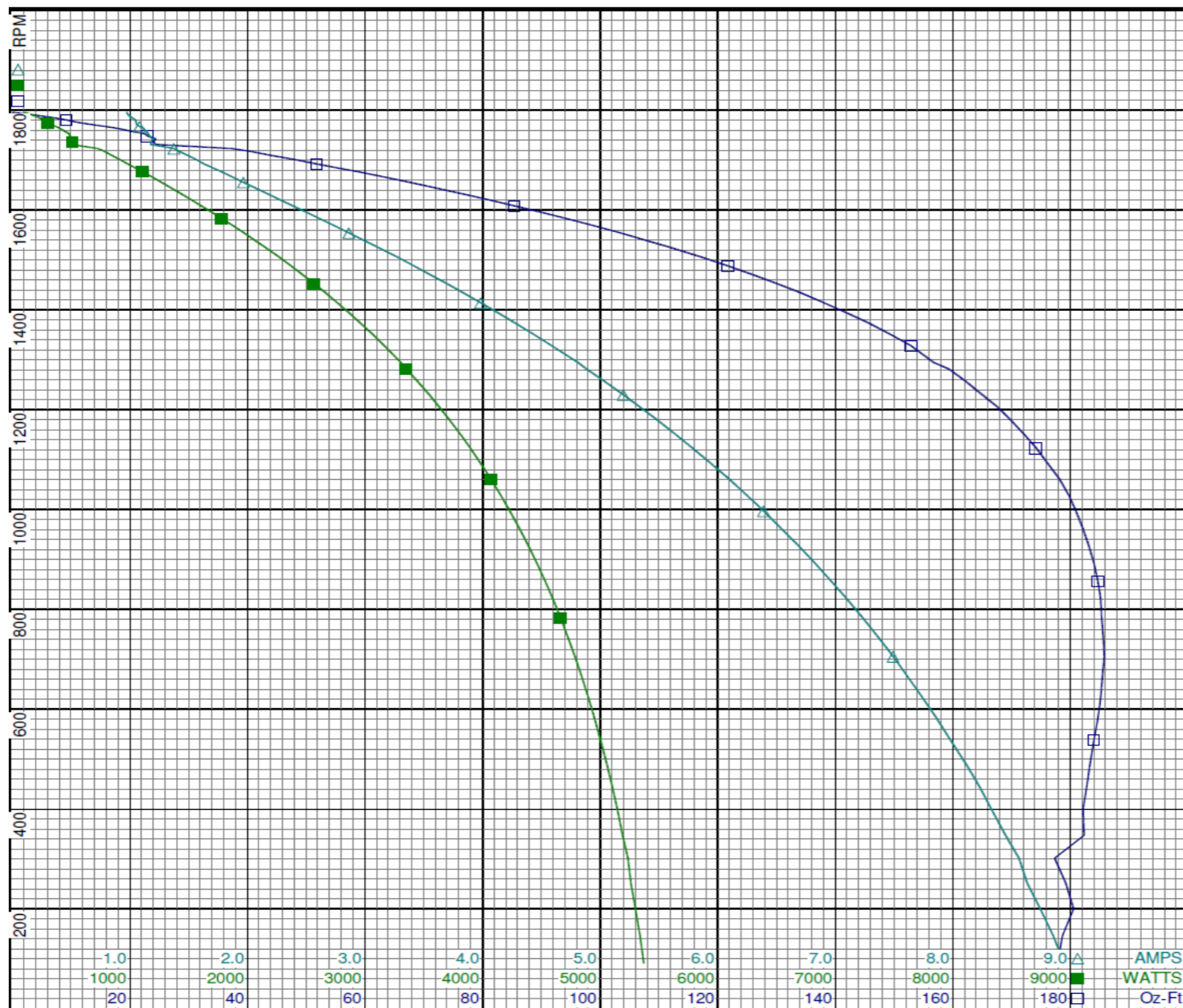
Performance Data



10C899B

REV.

-



Curve Descriptions:

Motor(1) Test 18 Run 460V 60 Hz 4P

- SPEED vs TORQUE
- SPEED vs WATTS
- △ SPEED vs Ia

Motor Ratings:

(1) P055DHK1616 ID: 1 of 1 10C899B

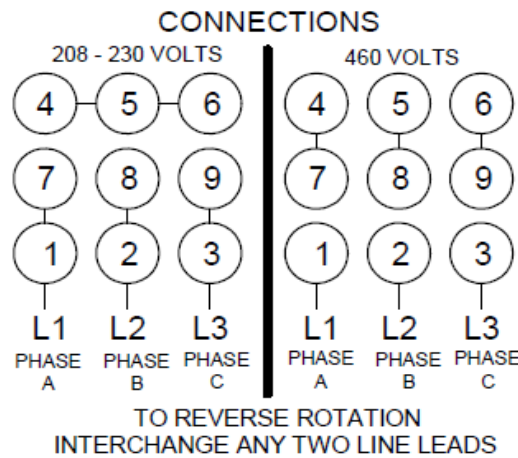
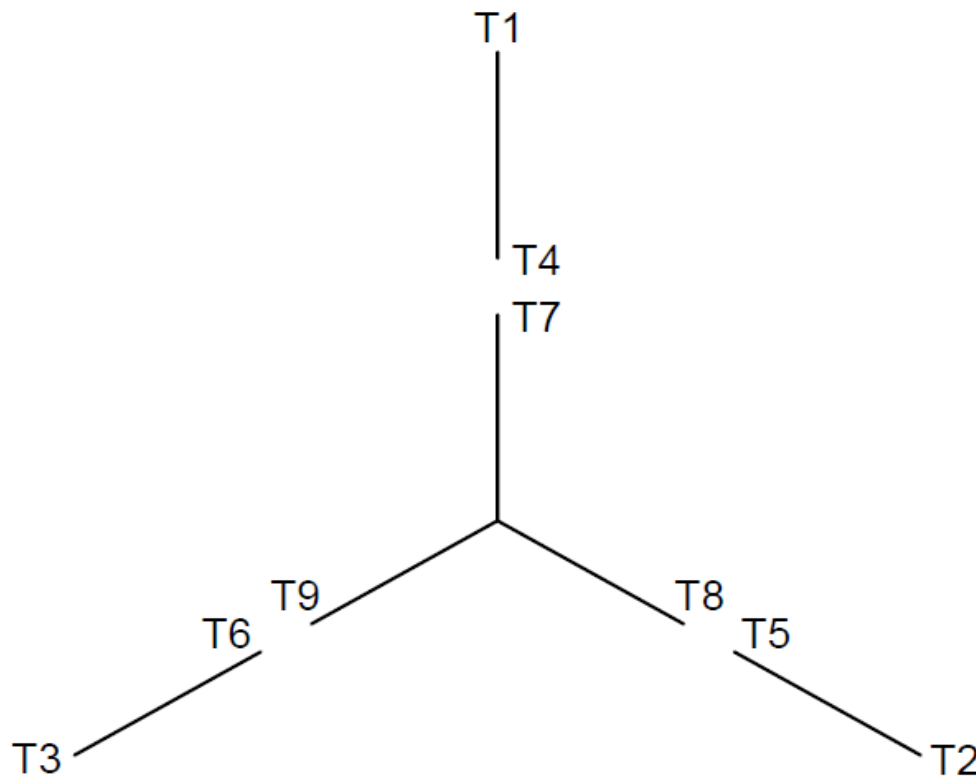
DRAWING NO.	PAGE 8 of 8	REV.
	10C899B	-

Dayton Electric Mfg. Co. Lake Forest, IL 60045 USA

10C899B

REV.
0

Motor Wiring Diagram 9 Lead, Dual Voltage (WYE Conn.)



DRAWING NO.	PAGE 1 of 1	REV.
10C899B		0

Dayton®**INDUSTRIAL MOTOR**

HP: 3/4

VOLTS: 208-230/460

AMPS: 2.8-2.8/1.5

RPM: 1725 & 1425

DUTY: CONT

SF: 1.0

KVA CODE: F

ENCL: TEFC

THERMALLY PROTECTED: NONE

MFG. NO. PROT. CODE:

MTR REF: P55DHK-1616

190/380V, 50 HZ, AMPS 3.1/1.6

[BAR CODE]

Part No 10C899B

PH: 3

HZ: 60&50

FR: 48

INS CL: B

AMB: 40 °C

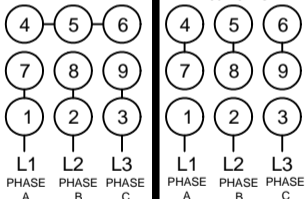
SFA: 2.8-2.8/1.5

AVG. F.L.
EFF. 74.0**Disconnect Power Before Making Any
Electrical Connections or Changes**

CONNECTIONS

208 - 230 VOLTS

460 VOLTS

TO REVERSE ROTATION
INTERCHANGE ANY TWO LINE LEADS

Mfd for Dayton Electric Mfg. Co., Lake Forest, IL 60045 USA

[Made in Mexico]