

BALDOR • RELIANCE

Customer information packet

VL1406T

3HP, 3450RPM, 1PH, 60HZ, 182TC, 3532LC, ODTF

Class - None

Division - Not Applicable

Specifications

Enclosure	ODTF
Frame	182TC
Frame Material	Steel
Frequency	60.00 Hz
Haz Area Class and Group	None
Haz Area Division	Not Applicable
Motor Letter Type	Cap Start, Cap Run
Output @ Frequency	3.000 HP @ 60 HZ
Phase	1
Synchronous Speed @ Frequency	3600 RPM @ 60 HZ
Voltage @ Frequency	115.0 V @ 60 HZ 230.0 V @ 60 HZ
Agency Approvals	UR CSA
Ambient Temperature	40 °C
Auxillary Box	No Auxillary Box
Auxillary Box Lead Termination	None
Base Indicator	No Mounting
Bearing Grease Type	Polyrex EM (-20F +300F)
Blower	None
Current @ Voltage	13.600 A @ 230.0 V 14.700 A @ 208.0 V 27.200 A @ 115.0 V
Design Code	L
Drip Cover	Drip Cover
Duty Rating	CONT
Efficiency @ 100% Load	75.5 %
Electrically Isolated Bearing	Not Electrically Isolated
Feedback Device	NO FEEDBACK
Front Face Code	Drip Cover Mounting
Front Shaft Indicator	None
Heater Indicator	No Heater

Part detail

Revision	Y
Type	AC
Mech. spec.	35U226
Base	
Status	PRD/A
Elec. spec.	35WGZ508
Layout	35LYU226
Eff. date	05-07-2024
CD Diagram	CD0055
Poles	02
Leads	4#14 A PH,2#18 B PH
Proprietary	False
Created date	06-22-2007

High Voltage Full Load Amps	13.6 a
Insulation Class	B
Inverter Code	Not Inverter
KVA Code	H
Lifting Lugs	No Lifting Lugs
Locked Bearing Indicator	Locked Bearing
Motor Lead Exit	Ko Box
Motor Lead Quantity/Wire Size	4 @ 14 AWG, A PH
Motor Lead Termination	Flying Leads
Motor Standards	NEMA
Motor Type	3532LC
Mounting Arrangement	F1
Number of Poles	2
Overall Length	15.18 IN
Power Factor	92
Product Family	General Purpose
Pulley End Bearing Type	Ball
Pulley Face Code	C-Face
Pulley Shaft Indicator	Standard
Rodent Screen	None
RoHS Status	ROHS COMPLIANT
Service Factor	1.15
Shaft Diameter	1.125 IN
Shaft Extension Location	Pulley End
Shaft Ground Indicator	No Shaft Grounding
Shaft Rotation	Reversible
Shaft Slinger Indicator	No Slinger
Speed	3450 rpm
Speed Code	Single Speed
Starting Method	Direct on line
Thermal Device - Bearing	None
Thermal Device - Winding	None
Vibration Sensor Indicator	No Vibration Sensor
Winding Thermal 1	None

Winding Thermal 2

None

Nameplate

NP1256L									
CAT.NO.	VL1406T								
SPEC.	35U226Z508								
HP	3								
VOLTS	115/230								
AMP	27.2/13.6								
RPM	3450								
FRAME	182TC		HZ	60		PH	1		
SER.F.	1.15	CODE	H	DES	L	CLASS	B		
NEMA-NOM-EFF	75.5	PF	92						
RATING	40C AMB-CONT								
CC									
DE	6206		ODE	6203					
ENCL	ODTF	SN							

Accessories

Part number	Description	Multiplier
35-1409	C FACE KIT	A8

AC Induction Motor Performance Data

Record # 15705

Typical performance - not guaranteed values

Winding: 35WGZ508-R001		Type: 3532LC	Enclosure: ODTF	
Nameplate Data			230 V, 60 Hz: High Voltage Connection	
Rated Output (HP)	3	Full Load Torque	4.5 LB-FT	
Volts	115/230	Start Configuration	direct on line	
Full Load Amps	27.2/13.6	Breakdown Torque	11 LB-FT	
R.P.M.	3450	Pull-up Torque	7.2 LB-FT	
Hz	60 Phase	Locked-rotor Torque	10 LB-FT	
NEMA Design Code	L KVA Code	Starting Current	85.8 A	
Service Factor (S.F.)	1.15	No-load Current	4.42 A	
NEMA Nom. Eff.	75.5 Power Factor	Line-line Res. @ 25°C	0.812 Ω A Ph 1.04 Ω B Ph	
Rating - Duty	40C AMB-CONT	Temp. Rise @ Rated Load	40°C	
S.F. Amps		Temp. Rise @ S.F. Load	51°C	

Load Characteristics 230 V, 60 Hz, 3 HP

% of Rated Load	25	50	75	100	125	150	S.F.
Power Factor	67	83	89	92	93	93	93
Efficiency	62.1	74.3	77.4	76.6	73.4	68.4	74.7
Speed	3564	3534	3500	3458	3405	3324	3426
Line amperes	5.47	7.62	10.3	13.6	17.7	23	16.1

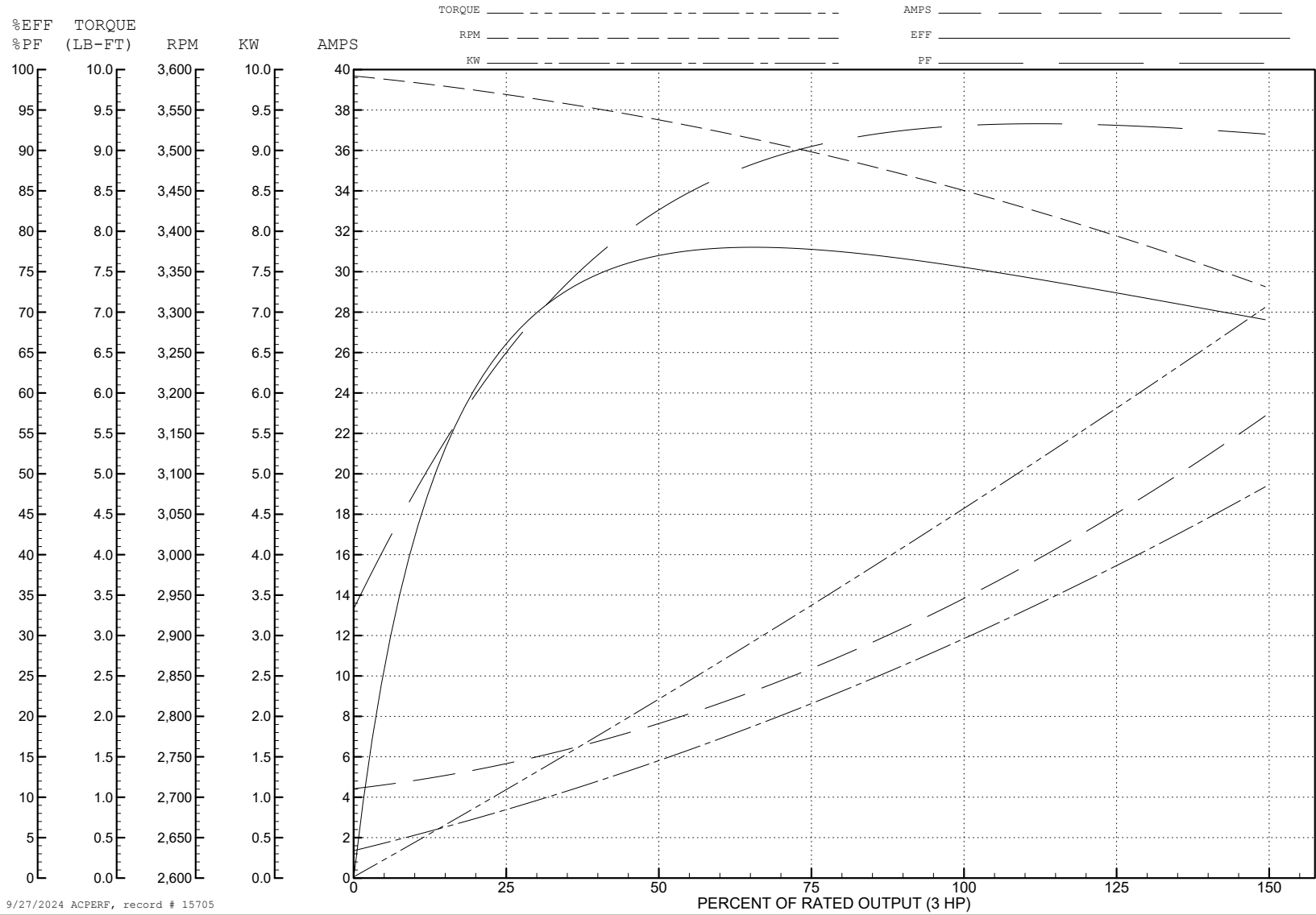
ABB Motors and Mechanical Inc.

WINDING # 35WGZ508

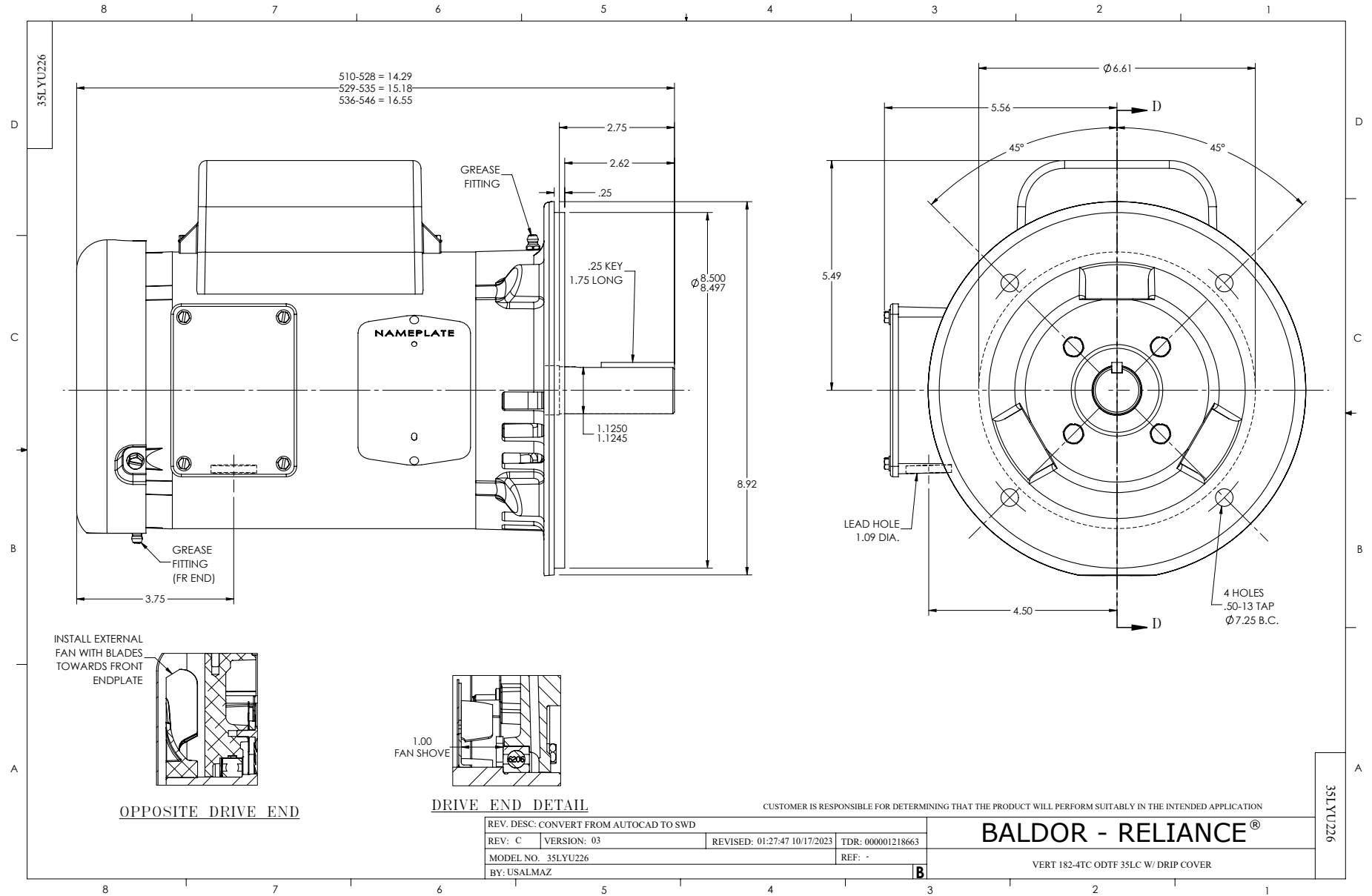
Typical performance - not guaranteed values.

3 HP 1 PH 60 HZ 3450 RPM 230 V 3532LC

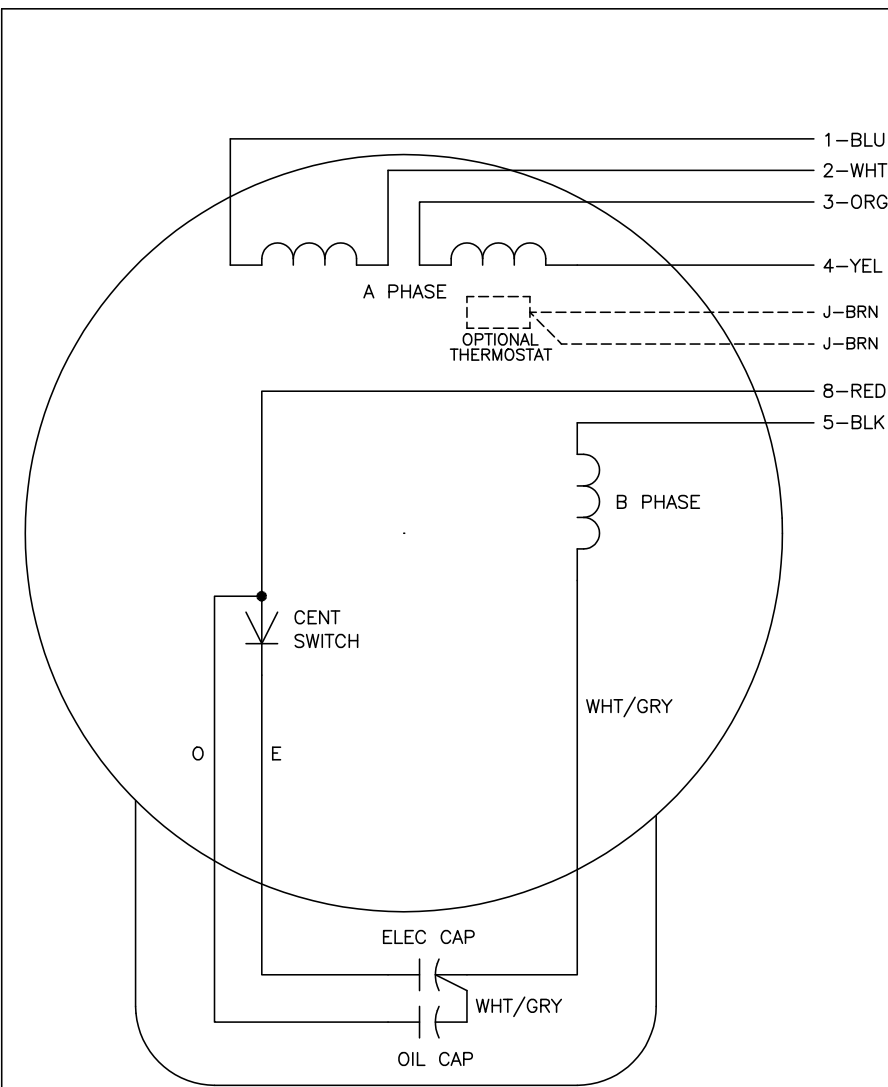
TORQUES (LB-FT): PO=11 PU=7.2 LR=10 LRA=85.8



9/27/2024 ACPERF, record # 15705



CD0055



	LINE A	LINE B	JOIN
HIGH STD	1	4,5	2,3,8
HIGH OPP	1	4,8	2,3,5
LOW STD	1,3,8	2,4,5	-
LOW OPP	1,3,5	2,4,8	-

NOTES:

1. STANDARD ROTATION IS CCW FACING END OPPOSITE SHAFT EXTENSION.
2. OPTIONAL THERMOSTAT IS PROVIDED WHEN SPECIFIED.
3. MULTIPLE CAPACITORS ARE CONNECTED IN PARALLEL UNLESS OTHERWISE SPECIFIED.
4. LEAD COLORS ARE OPTIONAL. LEADS MUST ALWAYS BE NUMBERED AS SHOWN.

REV. DESC: REVISE TO SHOW OPTIONAL COLORS			
REV. LTR: D	BY: JLP	REVISED: 04/08/99 1:17	TDR: 0178636
C00000		FILE: AAA00007414	MDL: -
		MTL: -	

BALDOR ELECTRIC Co.

TYPE LC, DV, REV, 6 LEADS

CD0055