

BALDOR • RELIANCE

Customer information packet

VL1322T

2HP, 1735RPM, 1PH, 60HZ, 145TC, 3538LC, OPEN, F

Class - None

Division - Not Applicable

Copyright © All product information within this document is subject to ABB Motors and Mechanical Inc. copyright © protection, unless otherwise noted.

9/27/2024 5:00:25 PM

Specifications

Enclosure	OPEN
Frame	145TC
Frame Material	Steel
Frequency	60.00 Hz
Haz Area Class and Group	None
Haz Area Division	Not Applicable
Motor Letter Type	Cap Start, Cap Run
Output @ Frequency	2.000 HP @ 60 HZ
Phase	1
Synchronous Speed @ Frequency	1800 RPM @ 60 HZ
Voltage @ Frequency	230.0 V @ 60 HZ 208.0 V @ 60 HZ 115.0 V @ 60 HZ
Agency Approvals	CSA UR
Ambient Temperature	40 °C
Auxillary Box	No Auxillary Box
Auxillary Box Lead Termination	None
Base Indicator	No Mounting
Bearing Grease Type	Polyrex EM (-20F +300F)
Blower	None
Current @ Voltage	9.200 A @ 208.0 V 8.200 A @ 230.0 V 18.200 A @ 115.0 V
Design Code	L
Drip Cover	Drip Cover
Duty Rating	CONT
Efficiency @ 100% Load	78.5 %
Electrically Isolated Bearing	Not Electrically Isolated
Feedback Device	NO FEEDBACK
Front Shaft Indicator	None
Heater Indicator	No Heater

Part detail

Revision	E
Type	AC
Mech. spec.	35EE018
Base	
Status	PRD/A
Elec. spec.	35WGG469
Layout	35LYEE018
Eff. date	06-19-2024
CD Diagram	CD0016A01
Poles	04
Leads	4#16 A PH,3#18 B PH Y
Proprietary	False
Created date	02-23-2023

High Voltage Full Load Amps	8.2 a
Insulation Class	F
Inverter Code	Not Inverter
KVA Code	G
Lifting Lugs	No Lifting Lugs
Locked Bearing Indicator	Locked Bearing
Motor Lead Quantity/Wire Size	4 @ 16 AWG, A PH
Motor Lead Termination	Flying Leads
Motor Standards	NEMA
Motor Type	3538LC
Mounting Arrangement	F1
Number of Poles	4
Overall Length	15.54 IN
Power Factor	98
Product Family	General Purpose
Pulley End Bearing Type	Ball
Pulley Face Code	C-Face
Pulley Shaft Indicator	Standard
Rodent Screen	None
RoHS Status	ROHS COMPLIANT
Service Factor	1.15
Shaft Diameter	0.875 IN
Shaft Ground Indicator	No Shaft Grounding
Shaft Rotation	Reversible
Shaft Slinger Indicator	No Slinger
Speed	1735 rpm
Speed Code	Single Speed
Starting Method	Direct on line
Thermal Device - Bearing	None
Thermal Device - Winding	None
Vibration Sensor Indicator	No Vibration Sensor
Winding Thermal 1	None
Winding Thermal 2	None

Nameplate

NP1256L									
CAT.NO.	VL1322T								
SPEC.	35EE018G469								
HP	2								
VOLTS	115/208-230								
AMP	18.2/9.2-8.2								
RPM	1735								
FRAME	145TC		HZ	60		PH	1		
SER.F.	1.15	CODE	G	DES	L	CLASS	F		
NEMA-NOM-EFF	78.5	PF	98						
RATING	40C AMB-CONT								
CC									
DE	6205		ODE	6203					
ENCL	OPEN	SN							
	SFA 20.4/11.2-10.2								

AC Induction Motor Performance Data

Record # 104654

Typical performance - not guaranteed values

Winding: 35WGG469-R004		Type: 3538LC	Enclosure: OPEN	
Nameplate Data			115 V, 60 Hz: Low Voltage Connection	
Rated Output (HP)	2	Full Load Torque	5.98 LB-FT	
Volts	115/208-230	Start Configuration	direct on line	
Full Load Amps	18.2/9.2-8.2	Breakdown Torque	15.4 LB-FT	
R.P.M.	1735	Pull-up Torque	14.1 LB-FT	
Hz	60 Phase	Locked-rotor Torque	16.1 LB-FT	
NEMA Design Code	L KVA Code	Starting Current	126 A	
Service Factor (S.F.)	1.15	No-load Current	7.98 A	
NEMA Nom. Eff.	78.5 Power Factor	Line-line Res. @ 25°C	0.357 Ω A Ph 0.894 Ω B Ph	
Rating - Duty	40C AMB-CONT	Temp. Rise @ Rated Load	48°C	
S.F. Amps	20.4/11.2-10.2	Temp. Rise @ S.F. Load	58°C	
		Locked-rotor Power Factor	92.1	
		Rotor inertia	0.275 lb-ft ²	

Load Characteristics 115 V, 60 Hz, 2 HP

% of Rated Load	25	50	75	100	125	150	S.F.
Power Factor	58	77	88	93	95	99	94
Efficiency	65.8	79.8	81.6	81.1	79.1	77.6	79.9
Speed	1783	1769	1754	1734	1713	1704	1721
Line amperes	8.68	10.7	13.51	18.2	21.05	22.84	19.9

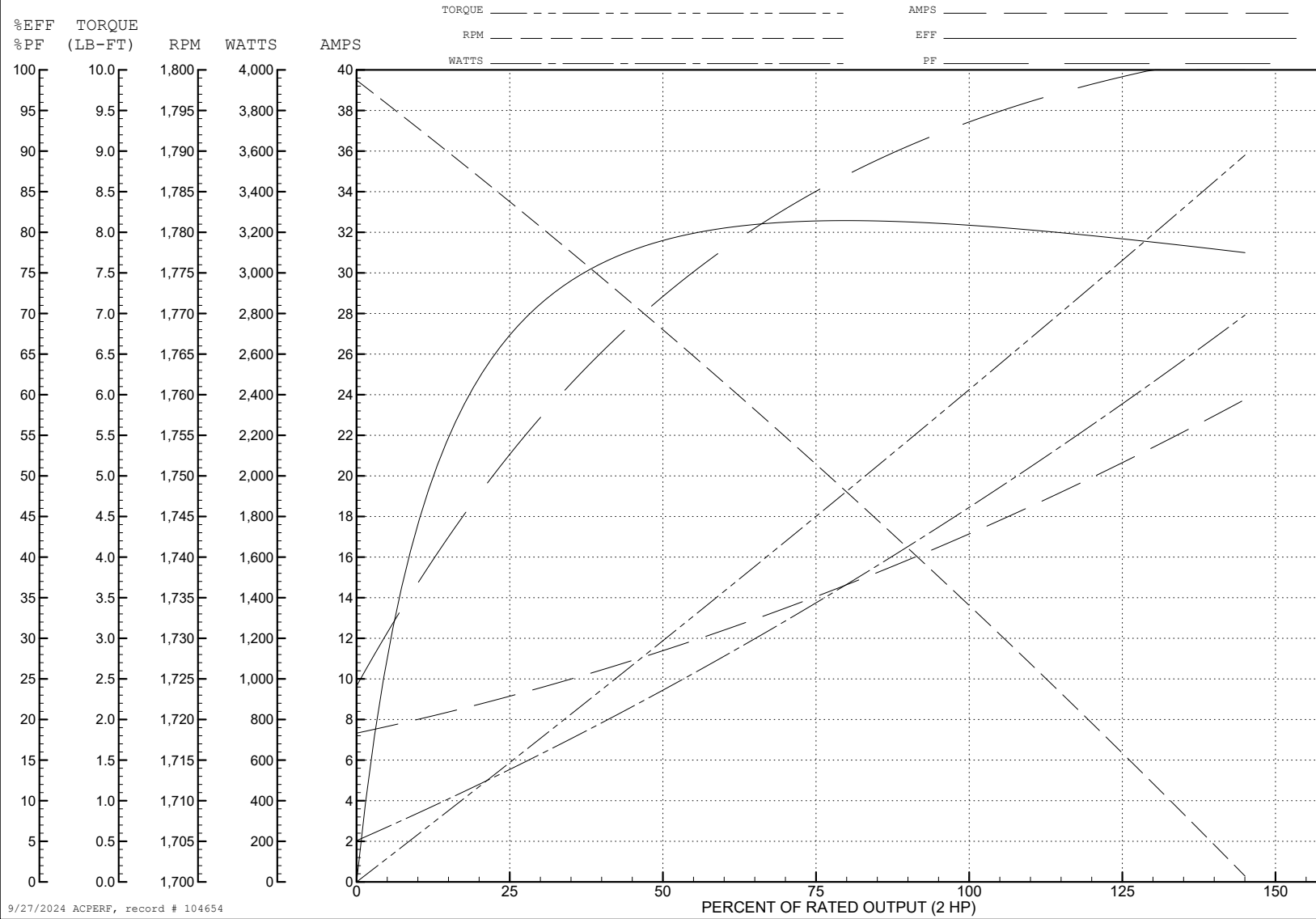
ABB Motors and Mechanical Inc.

WINDING # 35WGG469

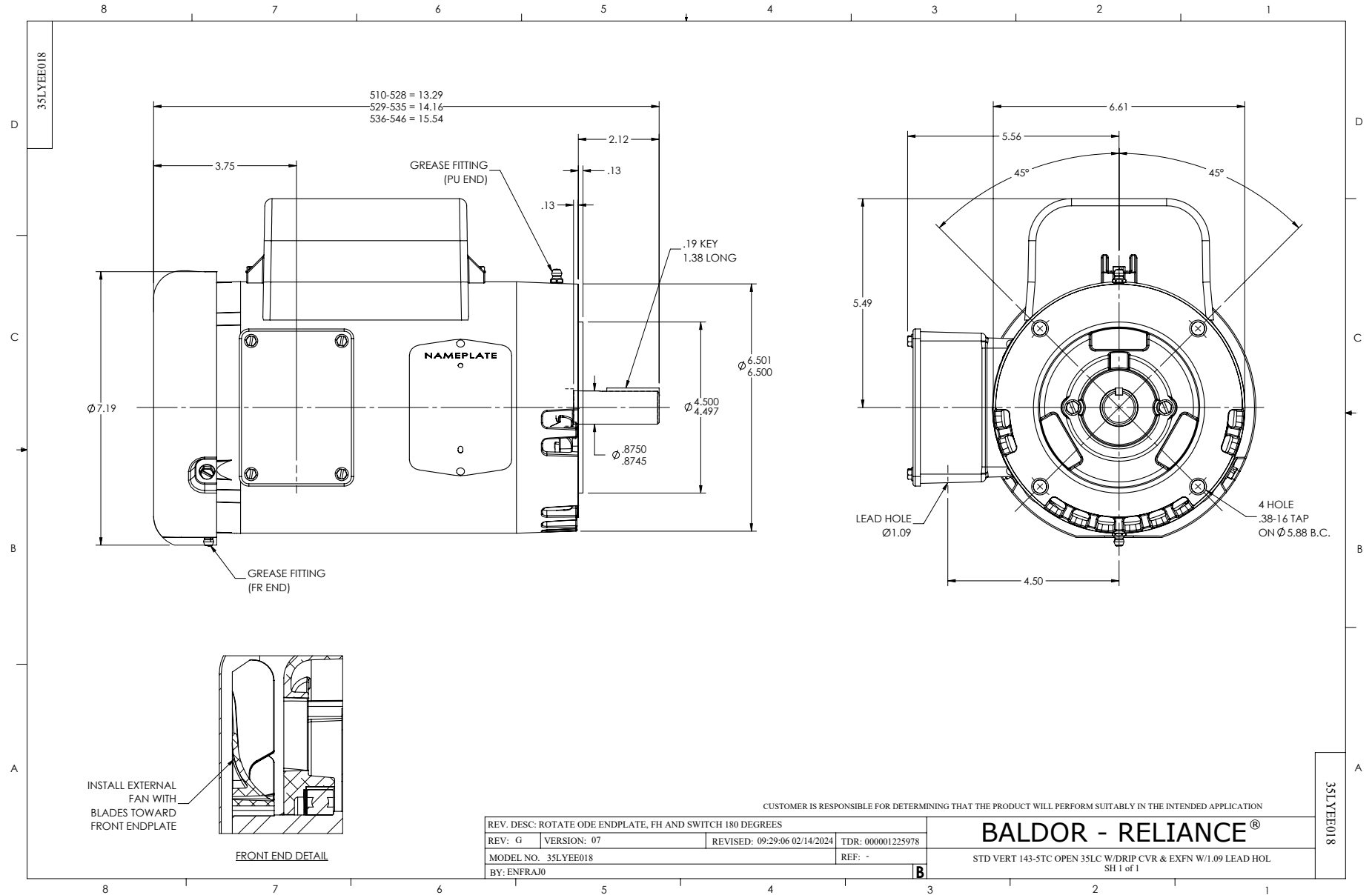
Typical performance - not guaranteed values.

2 HP 1 PH 60 HZ 1735 RPM 115 V 3538LC

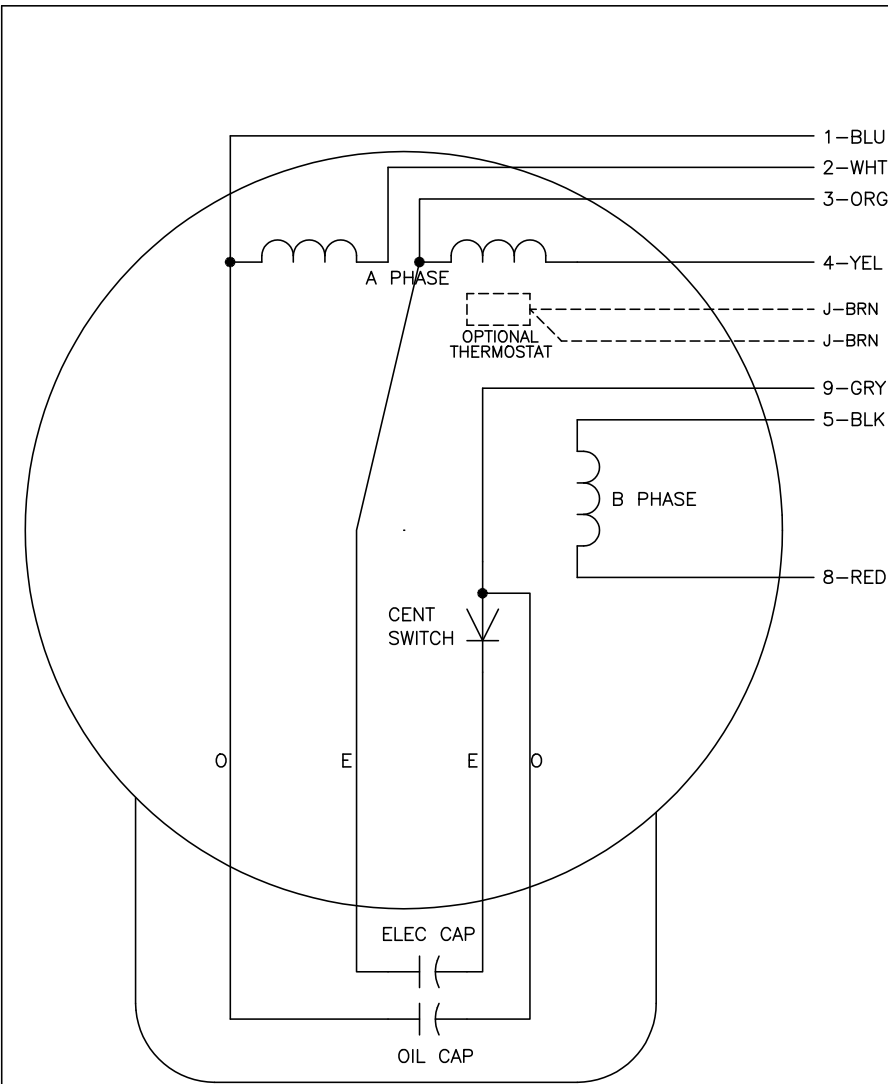
TORQUES (LB-FT): PO=15.4 PU=14.1 LR=16.1 LRA=126



9/27/2024 ACPERF, record # 104654



CD0016A01



	LINE A	LINE B	JOIN	JOIN
HIGH STD	1	4,5	2,3	8,9
HIGH OPP	1	4,8	2,3	5,9
LOW STD	1,3	2,4,5	8,9	-
LOW OPP	1,3	2,4,8	5,9	-

NOTES:

1. STANDARD ROTATION IS CCW FACING END OPPOSITE SHAFT EXTENSION.
2. OPTIONAL THERMOSTAT IS PROVIDED WHEN SPECIFIED.
3. MULTIPLE CAPACITORS ARE CONNECTED IN PARALLEL UNLESS OTHERWISE SPECIFIED.
4. LEAD COLORS ARE OPTIONAL. LEADS MUST ALWAYS BE NUMBERED AS SHOWN.

CD0016A01

REV. DESC: REVISE TO SHOW OPTIONAL COLORS			
REV. LTR: E	BY: JLP	REVISED: 04/09/99 1:19	TDR: 0178636
10A91000		FILE: AAA00007410	MDL: -
		MTL: -	

BALDOR ELECTRIC Co.

TYPE LC, DV, REV, OIL CAP ACR. LINE, 7 LEADS