

BALDOR • RELIANCE

Customer information packet

VL1321T

1.5HP, 1730RPM, 1PH, 60HZ, 145TC, 3536L, OPEN

Class - None

Division - Not Applicable

Copyright © All product information within this document is subject to ABB Motors and Mechanical Inc. copyright © protection, unless otherwise noted.

9/27/2024 5:00:19 PM

Specifications

Enclosure	OPEN
Frame	145TC
Frame Material	Steel
Frequency	60.00 Hz
Haz Area Class and Group	None
Haz Area Division	Not Applicable
Motor Letter Type	Cap Start, Induction Run
Output @ Frequency	1.500 HP @ 60 HZ
Phase	1
Synchronous Speed @ Frequency	1800 RPM @ 60 HZ
Voltage @ Frequency	115.0 V @ 60 HZ 230.0 V @ 60 HZ
Agency Approvals	CSA UR
Ambient Temperature	40 °C
Auxillary Box	No Auxillary Box
Auxillary Box Lead Termination	None
Base Indicator	No Mounting
Bearing Grease Type	Polyrex EM (-20F +300F)
Blower	None
Current @ Voltage	15.500 A @ 115.0 V 7.800 A @ 230.0 V 8.300 A @ 208.0 V
Design Code	L
Drip Cover	Drip Cover
Duty Rating	CONT
Efficiency @ 100% Load	75.5 %
Electrically Isolated Bearing	Not Electrically Isolated
Feedback Device	NO FEEDBACK
Front Shaft Indicator	None
Heater Indicator	No Heater
High Voltage Full Load Amps	7.8 a

Part detail

Revision	D
Type	AC
Mech. spec.	35DD005
Base	
Status	PRD/A
Elec. spec.	35WGG406
Layout	35LYDD005
Eff. date	07-02-2024
CD Diagram	CD0001
Poles	04
Leads	4#14 A PH,2#18 B PH
Proprietary	False
Created date	08-01-2022

Insulation Class	F
Inverter Code	Not Inverter
KVA Code	M
Lifting Lugs	No Lifting Lugs
Locked Bearing Indicator	Locked Bearing
Motor Lead Quantity/Wire Size	4 @ 14 AWG, A PH
Motor Lead Termination	Flying Leads
Motor Standards	NEMA
Motor Type	3536L
Mounting Arrangement	F1
Number of Poles	4
Overall Length	15.54 IN
Power Factor	80
Product Family	General Purpose
Pulley End Bearing Type	Ball
Pulley Face Code	C-Face
Pulley Shaft Indicator	Standard
Rodent Screen	None
Service Factor	1.15
Shaft Diameter	0.875 IN
Shaft Ground Indicator	No Shaft Grounding
Shaft Rotation	Reversible
Shaft Slinger Indicator	No Slinger
Speed	1730 rpm
Speed Code	Single Speed
Starting Method	Direct on line
Thermal Device - Bearing	None
Thermal Device - Winding	None
Vibration Sensor Indicator	No Vibration Sensor
Winding Thermal 1	None
Winding Thermal 2	None

Nameplate

NP1256L									
CAT.NO.	VL1321T								
SPEC.	35DD00G406								
HP	1.5								
VOLTS	115/230								
AMP	15.5/7.8								
RPM	1730								
FRAME	145TC		HZ	60		PH	1		
SER.F.	1.15	CODE	M	DES	L	CLASS	F		
NEMA-NOM-EFF	75.5	PF	80						
RATING	40C AMB-CONT								
CC									
DE	6205		ODE	6203					
ENCL	OPEN	SN							

AC Induction Motor Performance Data

Record # 89156

Typical performance - not guaranteed values

Winding: 35WGG406-R001		Type: 3536L	Enclosure: OPEN		
Nameplate Data			115 V, 60 Hz: Low Voltage Connection		
Rated Output (HP)	1.5	Full Load Torque	4.56 LB-FT		
Volts	115/230	Start Configuration	direct on line		
Full Load Amps	15.5/7.8	Breakdown Torque	9.82 LB-FT		
R.P.M.	1730	Pull-up Torque	9.83 LB-FT		
Hz	60 Phase	1	Locked-rotor Torque	14.77 LB-FT	
NEMA Design Code	L	KVA Code	M	Starting Current	100 A
Service Factor (S.F.)	1.15	No-load Current	10.35 A		
NEMA Nom. Eff.	75.5	Power Factor	80	Line-line Res. @ 25°C	0.446 Ω A Ph 1.18 Ω B Ph
Rating - Duty	40C AMB-CONT		Temp. Rise @ Rated Load	82°C	
S.F. Amps			Temp. Rise @ S.F. Load	101°C	
			Locked-rotor Power Factor	90.9	
			Rotor inertia	0.261 lb-ft ²	

Load Characteristics 115 V, 60 Hz, 1.5 HP

% of Rated Load	25	50	75	100	125	150	S.F.
Power Factor	42	62	73	81	83	85	82
Efficiency	66.2	75.9	78.2	77.1	73.2	67.7	74.8
Speed	1782	1767	1748	1728	1697	1658	1709
Line amperes	8.89	10.27	12.73	15.64	19.99	25.47	18.2

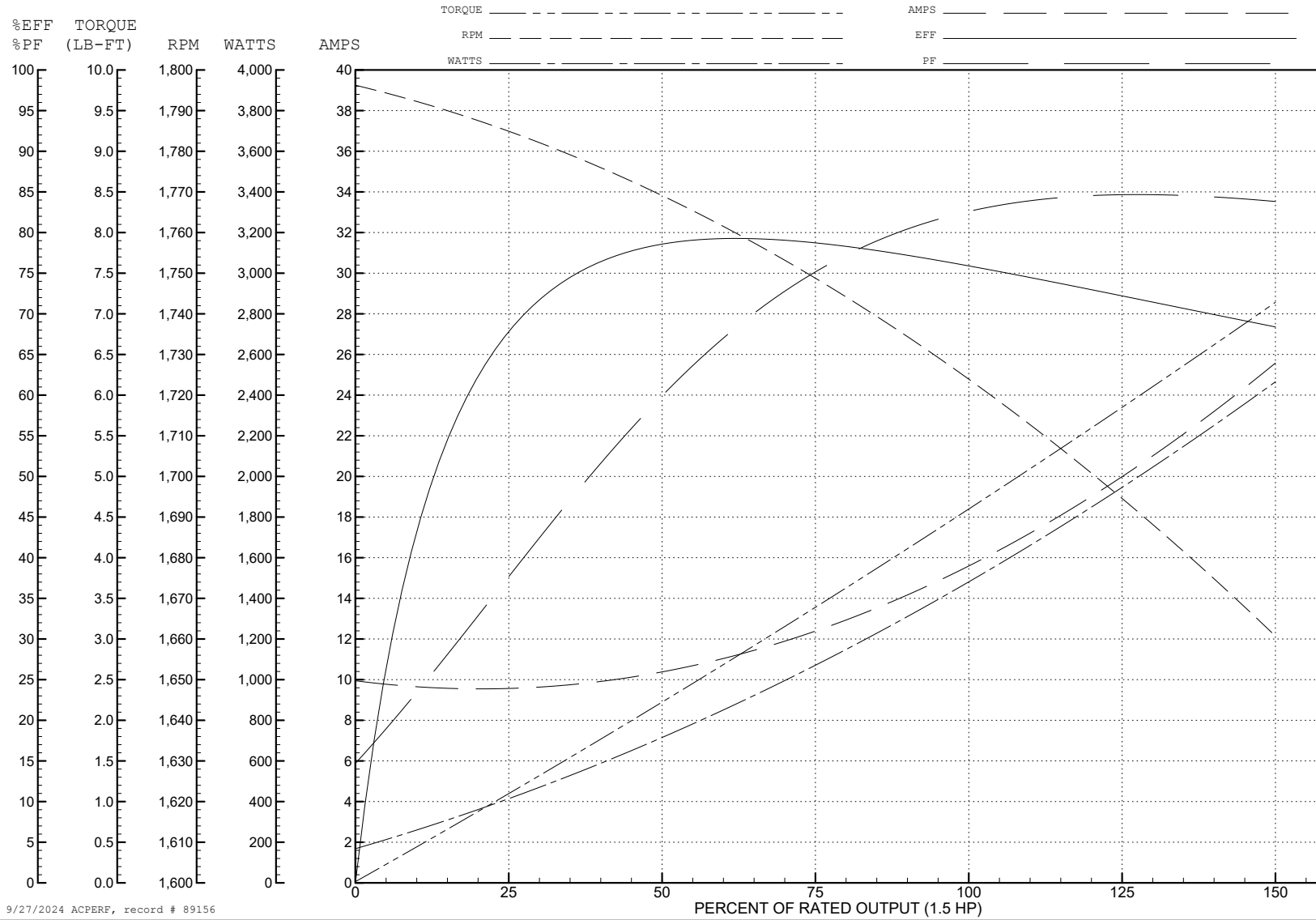
ABB Motors and Mechanical Inc.

WINDING # 35WGG406

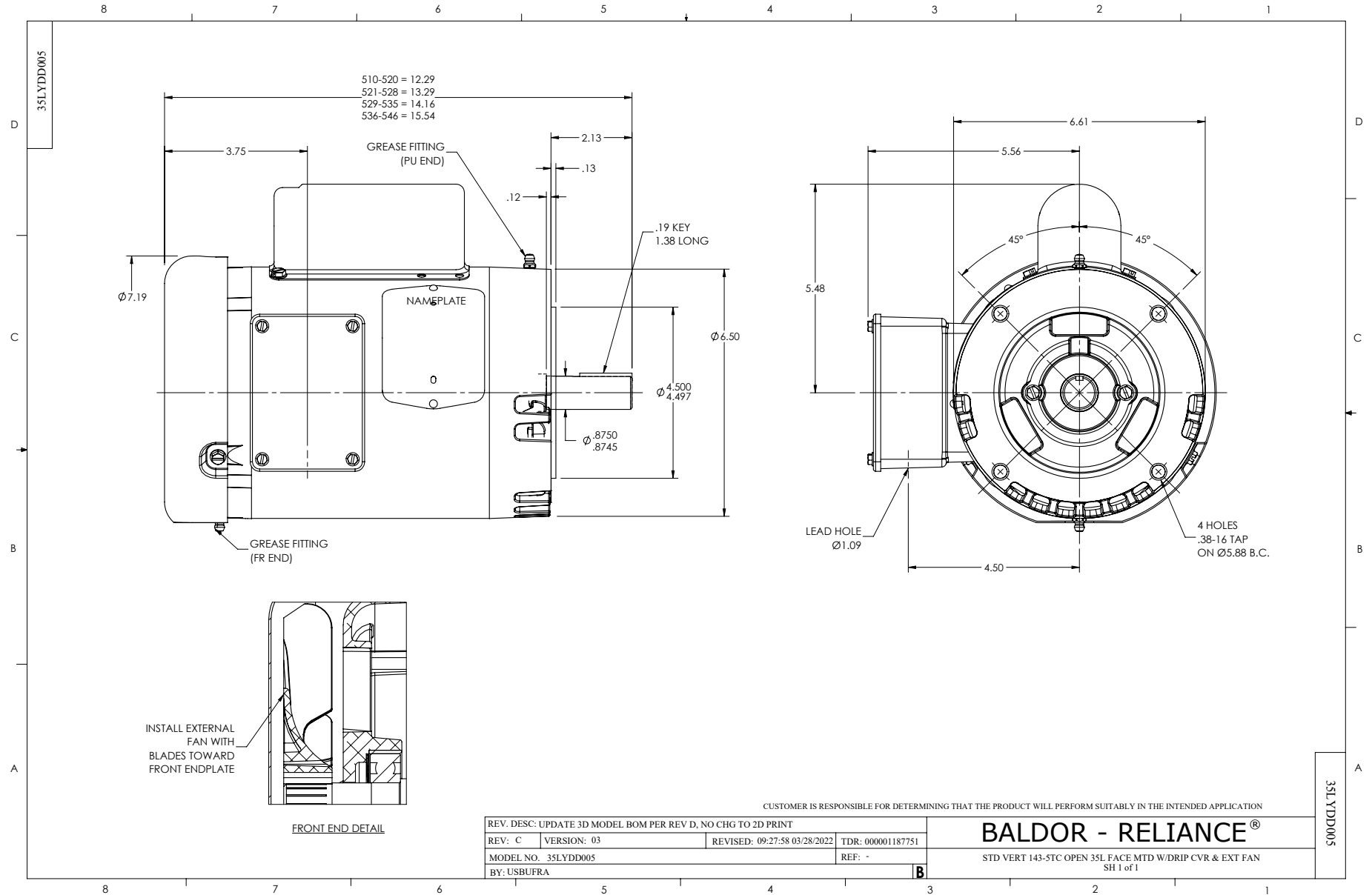
Typical performance - not guaranteed values.

1.5 HP 1 PH 60 HZ 1730 RPM 115 V 3536L

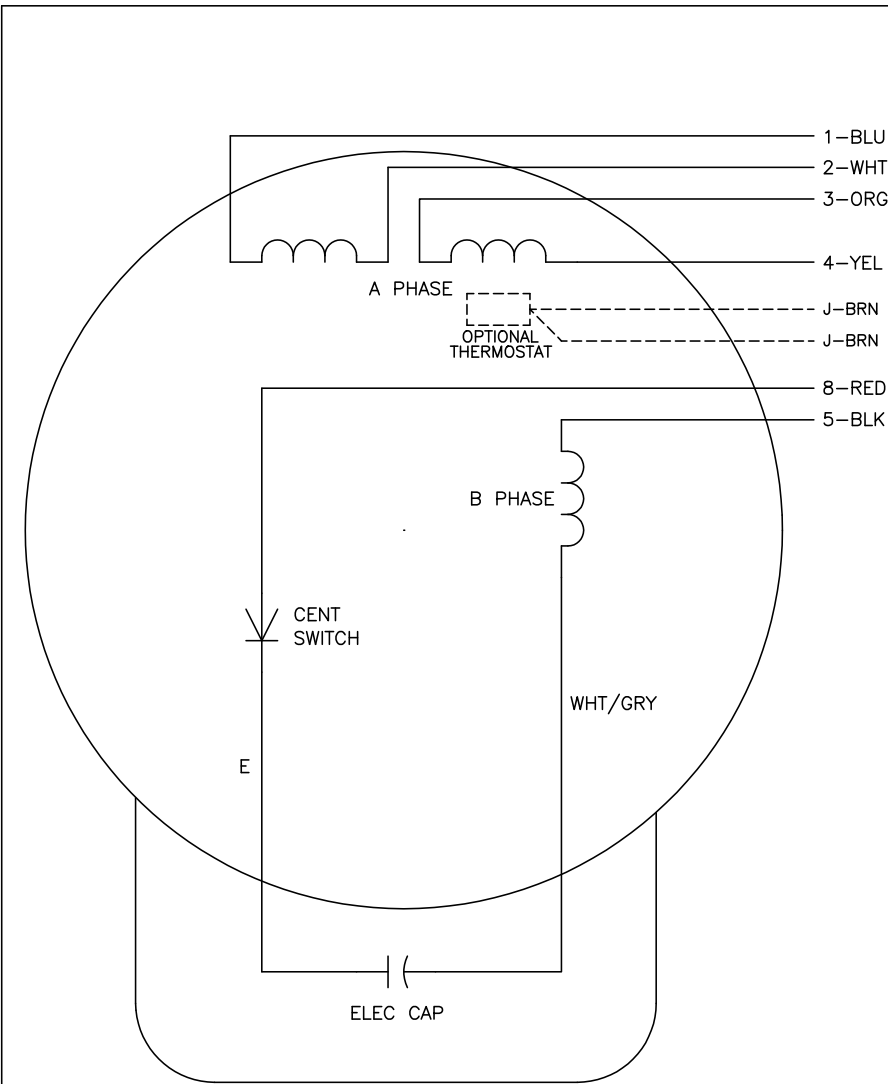
TORQUES (LB-FT): PO=9.82 PU=9.83 LR=14.77 LRA=100



9/27/2024 ACPERF, record # 89156



CD0001



	LINE A	LINE B	JOIN
HIGH STD	1	4,5	2,3,8
HIGH OPP	1	4,8	2,3,5
LOW STD	1,3,8	2,4,5	-
LOW OPP	1,3,5	2,4,8	-

NOTES:

1. STANDARD ROTATION IS CCW FACING END OPPOSITE SHAFT EXTENSION.
2. OPTIONAL THERMOSTAT IS PROVIDED WHEN SPECIFIED.
3. MULTIPLE CAPACITORS ARE CONNECTED IN PARALLEL UNLESS OTHERWISE SPECIFIED.
4. LEAD COLORS ARE OPTIONAL. LEADS MUST ALWAYS BE NUMBERED AS SHOWN.

REV. DESC: REVISE TO SHOW OPTIONAL COLORS			
REV. LTR: D	BY: JLP	REVISED: 04/08/99 1:16	TDR: 0178636
100000		FILE: AAA00007405	MDL: -
		MTL: -	

BALDOR ELECTRIC Co.

TYPE L, DV, REV, 6 LEADS

CD0001