

BALDOR • RELIANCE

Customer information packet

VEL11307A

.75HP, 1755RPM, 1PH, 60HZ, 56C, 3524LC, OPEN, F

Class - None

Division - Not Applicable

Specifications

Enclosure	OPEN
Frame	56C
Frame Material	Steel
Frequency	60.00 Hz
Haz Area Class and Group	None
Haz Area Division	Not Applicable
Motor Letter Type	Cap Start, Cap Run
Output @ Frequency	.750 HP @ 60 HZ
Phase	1
Synchronous Speed @ Frequency	1800 RPM @ 60 HZ
Voltage @ Frequency	115.0 V @ 60 HZ 230.0 V @ 60 HZ
Agency Approvals	CURUSEEV
Ambient Temperature	40 °C
Auxillary Box	No Auxillary Box
Auxillary Box Lead Termination	None
Base Indicator	No Mounting
Bearing Grease Type	Polyrex EM (-20F +300F)
Blower	None
Current @ Voltage	3.400 A @ 230.0 V 6.800 A @ 115.0 V
Design Code	N
Drip Cover	Drip Cover
Duty Rating	CONT
Efficiency @ 100% Load	81.8 %
Electrically Isolated Bearing	Not Electrically Isolated
Feedback Device	NO FEEDBACK
Front Face Code	Terminal Panel
Front Shaft Indicator	None
Heater Indicator	No Heater
High Voltage Full Load Amps	3.4 a
Insulation Class	F

Part detail

Revision	F
Type	AC
Mech. spec.	35H993
Base	
Status	PRD/A
Elec. spec.	35WGL617
Layout	35LYH993
Eff. date	04-30-2024
CD Diagram	CD0703
Poles	04
Leads	6#18,1#14 #1TH
Proprietary	False
Created date	03-03-2017

Inverter Code	Not Inverter
KVA Code	M
Lifting Lugs	No Lifting Lugs
Locked Bearing Indicator	Locked Bearing
Motor Lead Exit	Terminal Panel
Motor Lead Quantity/Wire Size	6 @ 18 AWG
Motor Lead Termination	None
Motor Standards	NEMA
Motor Type	3524LC
Mounting Arrangement	F1
Number of Poles	4
Overall Length	12.74 IN
Power Factor	90
Product Family	General Purpose
Pulley End Bearing Type	Ball
Pulley Face Code	C-Face
Pulley Shaft Indicator	Standard
Rodent Screen	None
RoHS Status	ROHS COMPLIANT
Service Factor	1.25
Shaft Diameter	0.625 IN
Shaft Extension Location	Pulley End
Shaft Ground Indicator	No Shaft Grounding
Shaft Rotation	Reversible: Connected OPP STD
Shaft Slinger Indicator	No Slinger
Speed	1755 rpm
Speed Code	Single Speed
Starting Method	Direct on line
Thermal Device - Bearing	None
Thermal Device - Winding	None
Vibration Sensor Indicator	No Vibration Sensor
Winding Thermal 1	Automatic Thermal Overload
Winding Thermal 1 Location	SB
Winding Thermal 2	None

Nameplate

NP3273L									
CAT.NO.	VEL11307A								
SPEC.	35H993L617G1								
HP	.75								
VOLTS	115/230								
AMP	6.8/3.4								
RPM	1755								
FRAME	56C		HZ	60		PH	1		
SER.F.	1.25	CODE	M	DES	N	CL	F		
F.L. AVG. EFF.	81.8	PF	90						
RATING	40C AMB-CONT								
CC			USABLE AT 208V				N/A		
DE	6205		ODE	6203					
ENCL	OPEN	SN							
	SFA 8.3/4.15								

AC Induction Motor Performance Data

Record # 62959

Typical performance - not guaranteed values

Winding: 35WGL617-R001		Type: 3524LC		Enclosure: OPEN	
Nameplate Data			115 V, 60 Hz: Low Voltage Connection		
Rated Output (HP)	.75		Full Load Torque	2.24 LB-FT	
Volts	115/230		Start Configuration	direct on line	
Full Load Amps	6.8/3.4		Breakdown Torque	6.98 LB-FT	
R.P.M.	1755		Pull-up Torque	4.73 LB-FT	
Hz	60 Phase	1	Locked-rotor Torque	9.82 LB-FT	
NEMA Design Code	N	KVA Code	M	Starting Current	64.4 A
Service Factor (S.F.)	1.25		No-load Current	3.41 A	
NEMA Nom. Eff.	81.8	Power Factor	90	Line-line Res. @ 25°C	0.78 Ω A Ph 2.3 Ω B Ph
Rating - Duty	40C AMB-CONT		Temp. Rise @ Rated Load	20°C	
S.F. Amps	8.3/4.15		Temp. Rise @ S.F. Load	25°C	
			Locked-rotor Power Factor	91.6	
			Rotor inertia	0.142 LB-FT ²	

Load Characteristics 115 V, 60 Hz, 0.75 HP

% of Rated Load	25	50	75	100	125	150	S.F.
Power Factor	53	71	80	85	89	91	89
Efficiency	61.8	75.6	81	82.4	82.5	80.8	82.5
Speed	1791	1781	1770	1759	1747	1733	1747
Line amperes	3.76	4.52	5.6	6.91	8.28	9.95	8.28

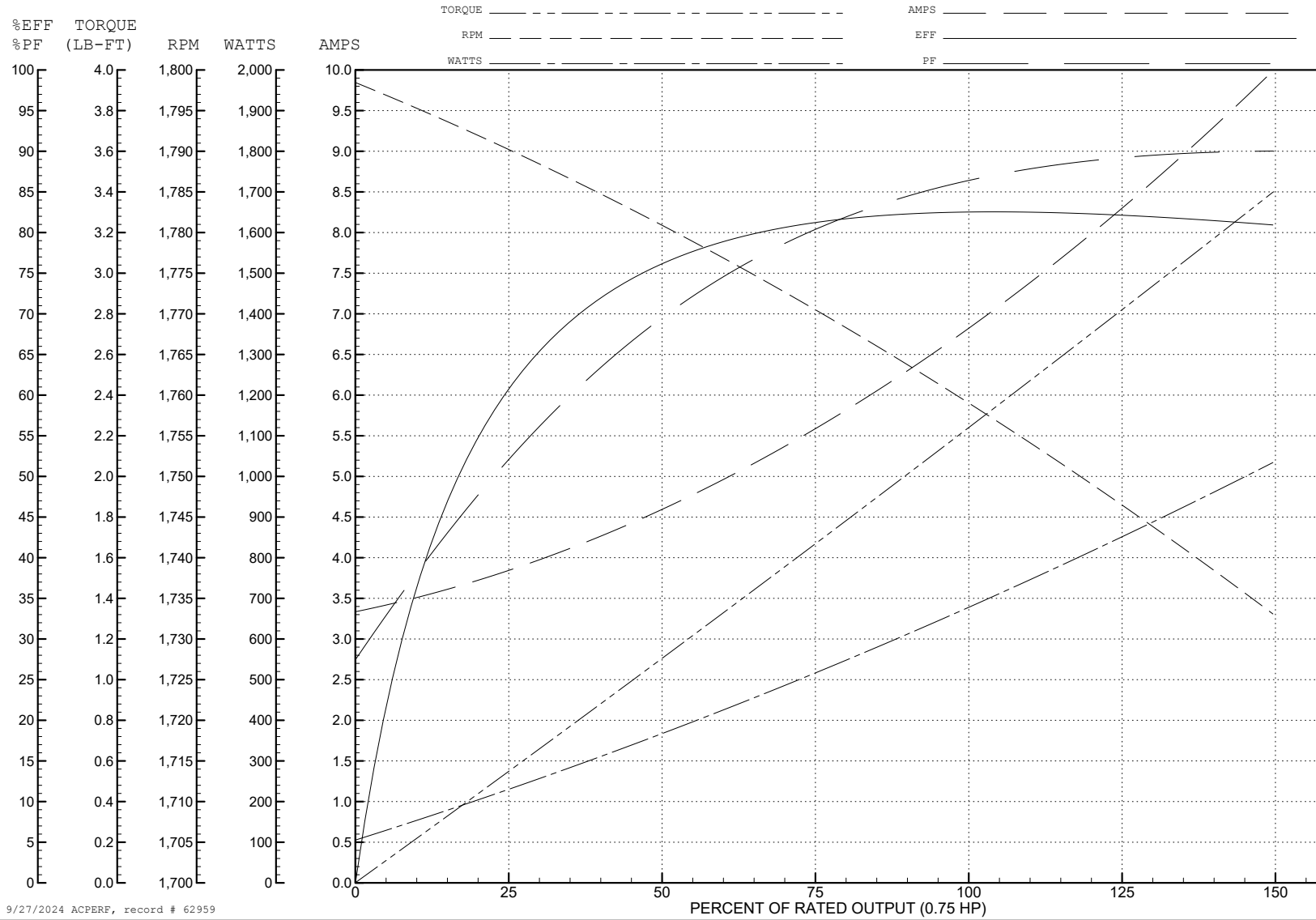
ABB Motors and Mechanical Inc.

WINDING # 35WGL617

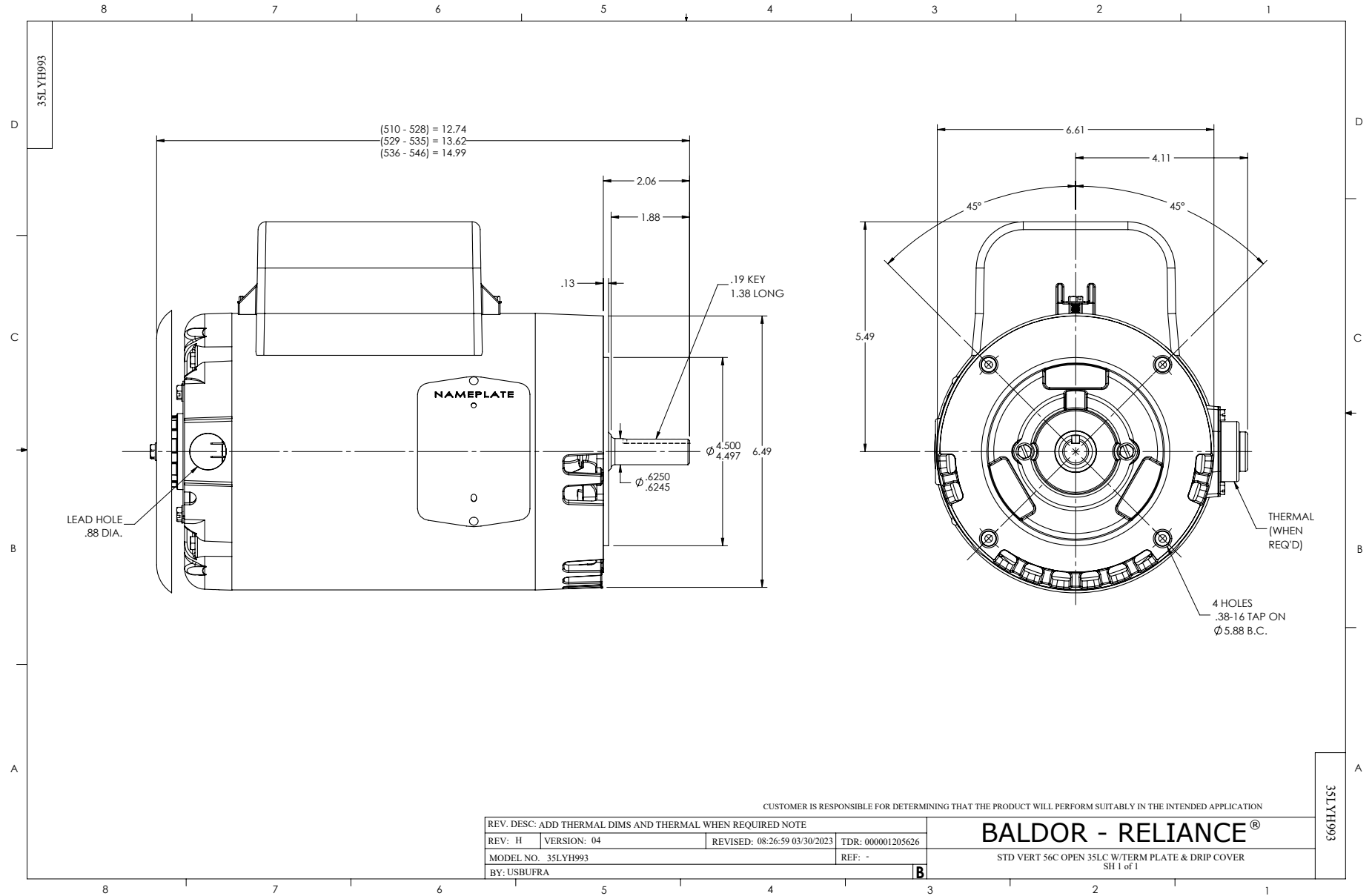
Typical performance - not guaranteed values.

0.75 HP 1 PH 60 HZ 1755 RPM 115 V 3524LC

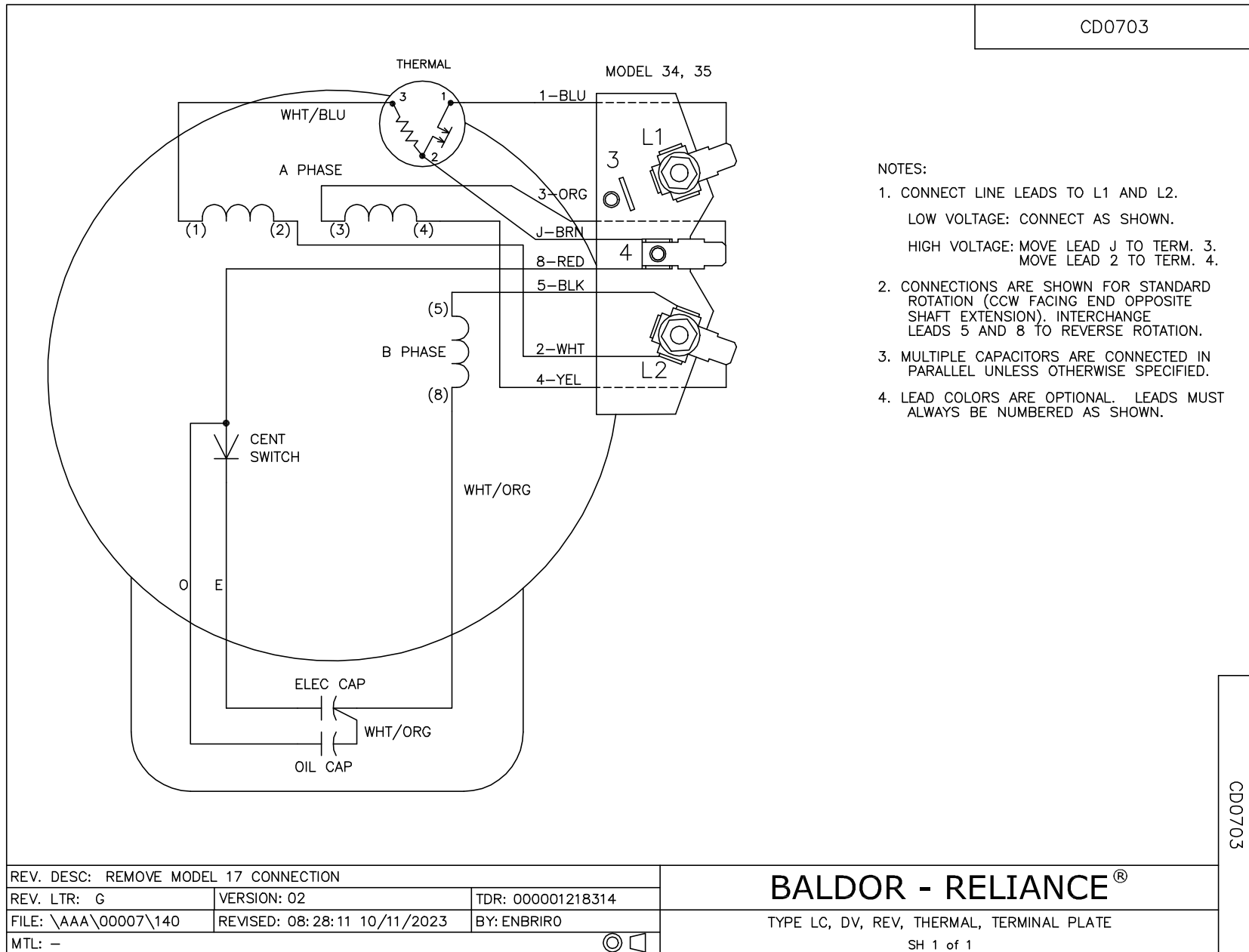
TORQUES (LB-FT): PO=6.98 PU=4.73 LR=9.82 LRA=64.4



9/27/2024 ACPERF, record # 62959



CD0703



CD0703

REV. DESC: REMOVE MODEL 17 CONNECTION		
REV. LTR: G	VERSION: 02	TDR: 000001218314
FILE: \AAA\00007\140	REVISED: 08:28:11 10/11/2023	BY: ENBRIRO
MTL: -		

BALDOR - RELIANCE®

TYPE LC, DV, REV, THERMAL, TERMINAL PLATE
SH 1 of 1