



Customer information packet

VEL11306

.75HP, 3450RPM, 1PH, 60HZ, 56C, 3428LC, OPEN, F

Class - None

Division - Not Applicable

Specifications

Enclosure	OPEN
Frame	56C
Frame Material	Steel
Frequency	60.00 Hz
Haz Area Class and Group	None
Haz Area Division	Not Applicable
Motor Letter Type	Cap Start, Cap Run
Output @ Frequency	.750 HP @ 60 HZ
Phase	1
Synchronous Speed @ Frequency	3600 RPM @ 60 HZ
Voltage @ Frequency	115.0 V @ 60 HZ 230.0 V @ 60 HZ
Agency Approvals	CURUSEEV
Ambient Temperature	40 °C
Auxillary Box	No Auxillary Box
Auxillary Box Lead Termination	None
Base Indicator	No Mounting
Bearing Grease Type	Polyrex EM (-20F +300F)
Blower	None
Current @ Voltage	3.300 A @ 230.0 V 4.700 A @ 208.0 V 6.300 A @ 115.0 V
Design Code	N
Drip Cover	Drip Cover
Duty Rating	CONT
Efficiency @ 100% Load	76.2 %
Electrically Isolated Bearing	Not Electrically Isolated
Feedback Device	NO FEEDBACK
Front Face Code	Standard
Front Shaft Indicator	None
Heater Indicator	No Heater
High Voltage Full Load Amps	3.3 a

Part detail

Revision	J
Type	AC
Mech. spec.	34M524
Base	
Status	PRD/A
Elec. spec.	34WGS943
Layout	34LYM524
Eff. date	05-16-2024
CD Diagram	CD0055
Poles	02
Leads	6#18
Proprietary	False
Created date	09-25-2014

Insulation Class	B
Inverter Code	Not Inverter
KVA Code	J
Lifting Lugs	No Lifting Lugs
Locked Bearing Indicator	Locked Bearing
Motor Lead Exit	Ko Box
Motor Lead Quantity/Wire Size	6 @ 18 AWG
Motor Lead Termination	Flying Leads
Motor Standards	NEMA
Motor Type	3428LC
Mounting Arrangement	F1
Number of Poles	2
Overall Length	14.04 IN
Power Factor	95
Product Family	General Purpose
Pulley End Bearing Type	Ball
Pulley Face Code	C-Face
Pulley Shaft Indicator	Standard
Rodent Screen	None
RoHS Status	ROHS COMPLIANT
Service Factor	1.25
Shaft Diameter	0.625 IN
Shaft Extension Location	Pulley End
Shaft Ground Indicator	No Shaft Grounding
Shaft Rotation	Reversible
Shaft Slinger Indicator	No Slinger
Speed	3450 rpm
Speed Code	Single Speed
Starting Method	Direct on line
Thermal Device - Bearing	None
Thermal Device - Winding	None
Vibration Sensor Indicator	No Vibration Sensor
Winding Thermal 1	None
Winding Thermal 2	None

Nameplate

NP3155L									
CAT.NO.	VEL11306								
SPEC.	34M524S943G1								
HP	.75								
VOLTS	115/230								
AMP	6.3/3.3								
RPM	3450								
FRAME	56C		HZ	60		PH	1		
SER.F.	1.25	CODE	J	DES	N	CL	B		
F.L. AVG. EFF.	76.2	PF	95						
RATING	40C AMB-CONT								
CC									
DE	6203		ODE	6203					
ENCL	OPEN	SN							
	SFA 8.4/4.2								

AC Induction Motor Performance Data

Record # 47427

Typical performance - not guaranteed values

Winding: 34WGS943-R002		Type: 3428LC	Enclosure: OPEN	
Nameplate Data			230 V, 60 Hz: High Voltage Connection	
Rated Output (HP)	.75	Full Load Torque	1.14 LB-FT	
Volts	115/230	Start Configuration	direct on line	
Full Load Amps	6.3/3.3	Breakdown Torque	3.88 LB-FT	
R.P.M.	3450	Pull-up Torque	2.07 LB-FT	
Hz	60 Phase	1	Locked-rotor Torque	3.92 LB-FT
NEMA Design Code	N KVA Code	J	Starting Current	24.8 A
Service Factor (S.F.)		1.25	No-load Current	0.961 A
NEMA Nom. Eff.	76.2 Power Factor	95	Line-line Res. @ 25°C	2.4012 Ω A Ph 2.118 Ω B Ph
Rating - Duty		40C AMB-CONT	Temp. Rise @ Rated Load	12°C
S.F. Amps		8.4/4.2	Temp. Rise @ S.F. Load	16°C

Load Characteristics 230 V, 60 Hz, 0.75 HP

% of Rated Load	25	50	75	100	125	150	S.F.
Power Factor	77	89	93	95	95	95	95
Efficiency	62.6	74.2	78.2	77.5	76.1	74.7	76.1
Speed	3567.6	3537.1	3504.2	3465	3419.8	3372.1	3420
Line amperes	1.23	1.84	2.51	3.32	4.21	5.14	4.21

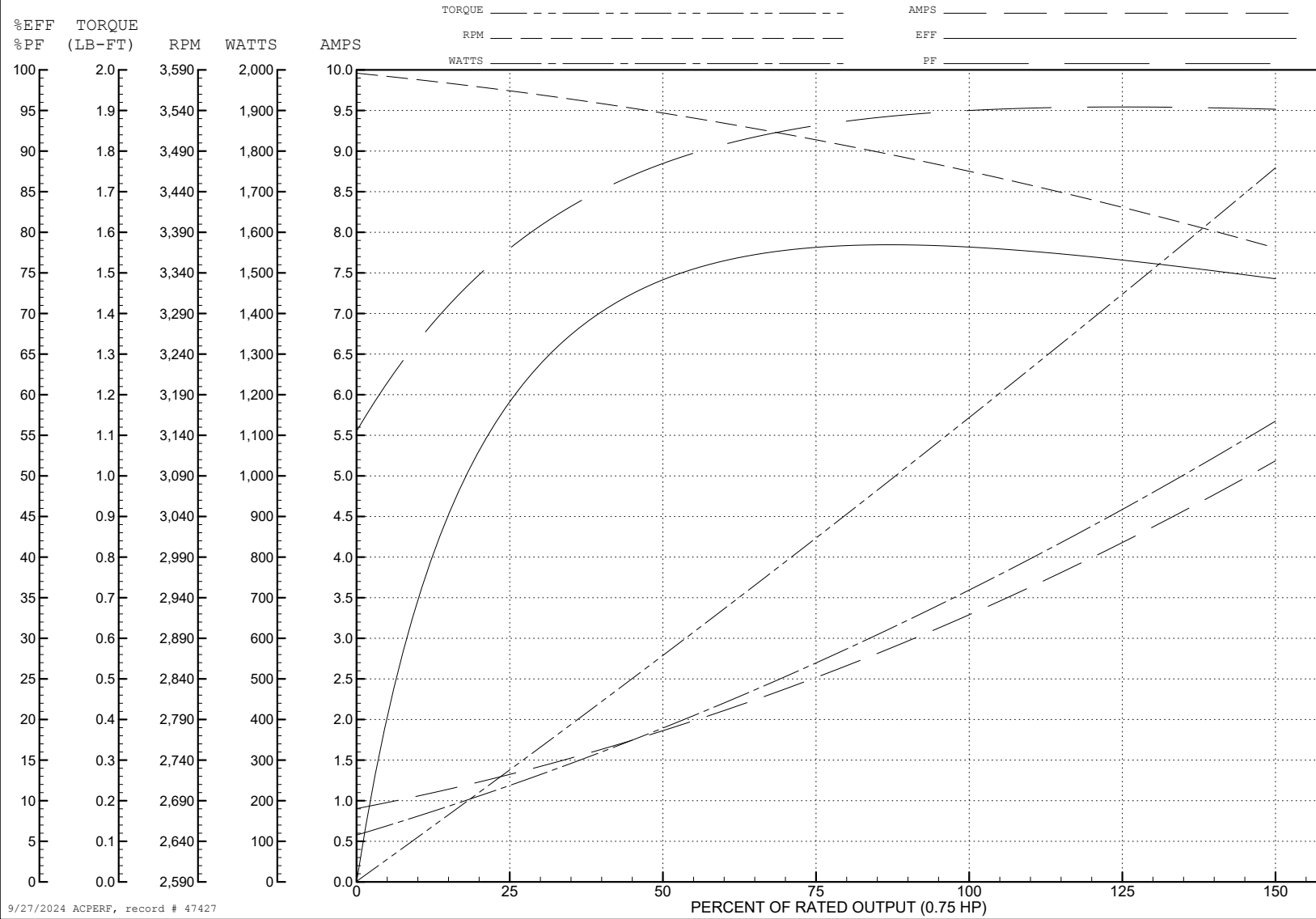
ABB Motors and Mechanical Inc.

WINDING # 34WGS943

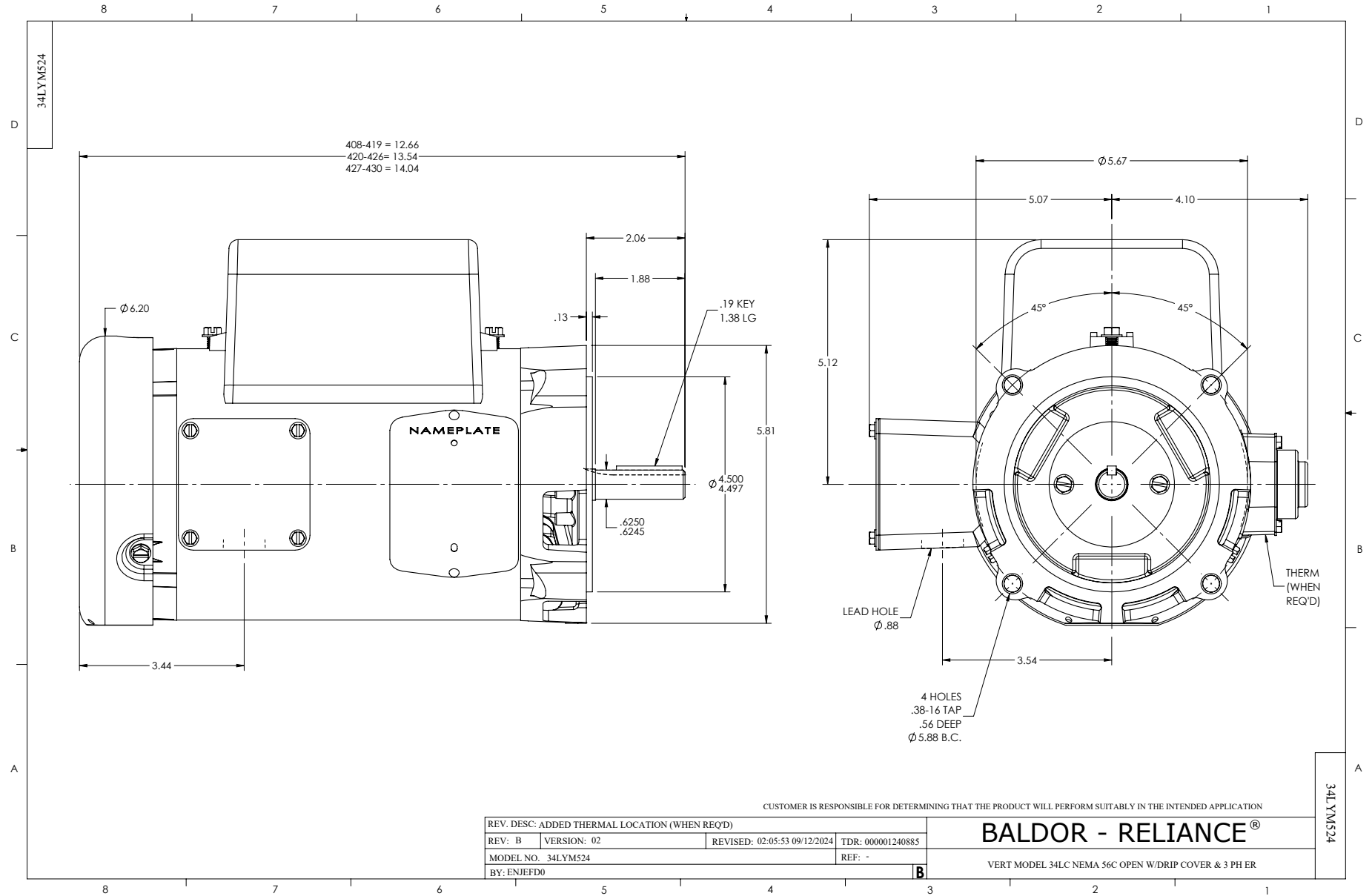
0.75 HP 1 PH 60 HZ 3450 RPM 230 V 3428LC

Typical performance - not guaranteed values.

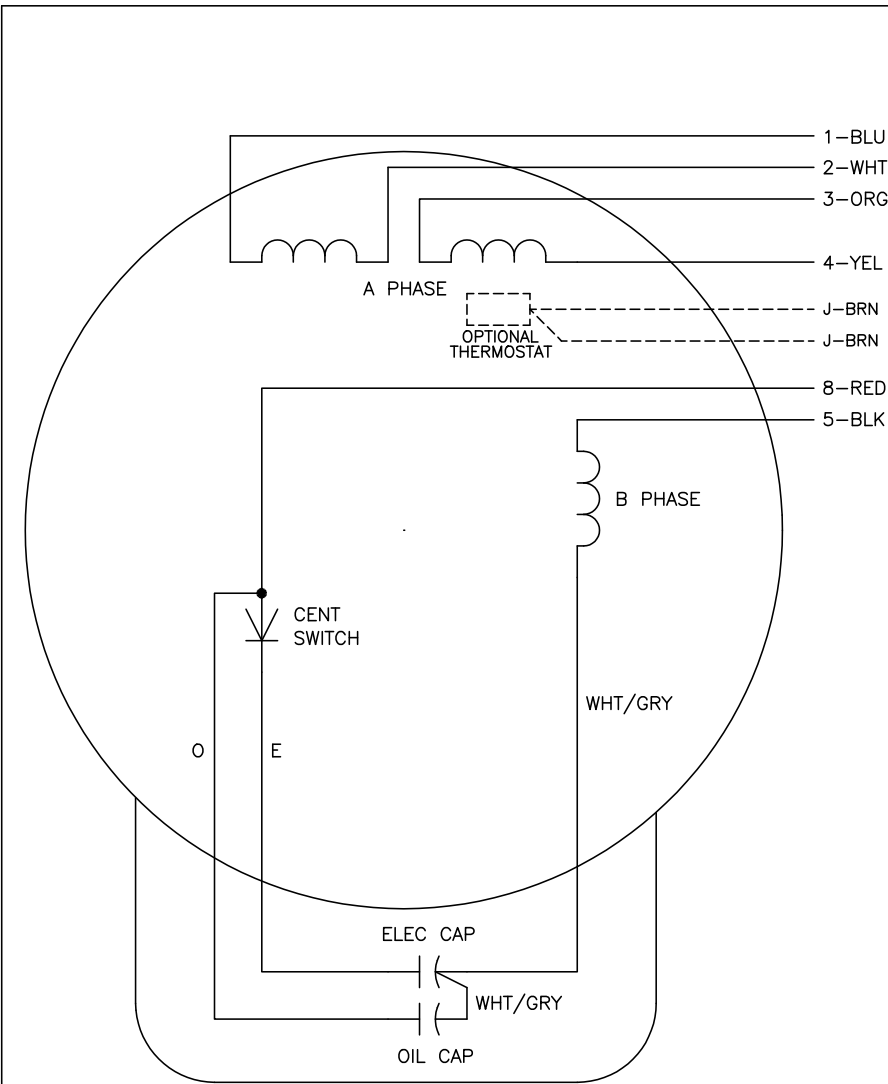
TORQUES (LB-FT): PO=3.88 PU=2.07 LR=3.92 LRA=24.8



9/27/2024 ACPERF, record # 47427



CD0055



	LINE A	LINE B	JOIN
HIGH STD	1	4,5	2,3,8
HIGH OPP	1	4,8	2,3,5
LOW STD	1,3,8	2,4,5	-
LOW OPP	1,3,5	2,4,8	-

NOTES:

1. STANDARD ROTATION IS CCW FACING END OPPOSITE SHAFT EXTENSION.
2. OPTIONAL THERMOSTAT IS PROVIDED WHEN SPECIFIED.
3. MULTIPLE CAPACITORS ARE CONNECTED IN PARALLEL UNLESS OTHERWISE SPECIFIED.
4. LEAD COLORS ARE OPTIONAL. LEADS MUST ALWAYS BE NUMBERED AS SHOWN.

CD0055

REV. DESC: REVISE TO SHOW OPTIONAL COLORS			
REV. LTR: D	BY: JLP	REVISED: 04/08/99 1:17	TDR: 0178636
C00000		FILE: AAA00007414	MDL: -
		MTL: -	

BALDOR ELECTRIC Co.

TYPE LC, DV, REV, 6 LEADS