



Customer information packet

VEL11304A

.5HP, 1725RPM, 1PH, 60HZ, 56C, 3424LC, OPEN, F1

Class - None

Division - Not Applicable

Specifications

Enclosure	OPEN
Frame	56C
Frame Material	Steel
Frequency	60.00 Hz
Haz Area Class and Group	None
Haz Area Division	Not Applicable
Motor Letter Type	Cap Start, Cap Run
Output @ Frequency	.500 HP @ 60 HZ
Phase	1
Synchronous Speed @ Frequency	1800 RPM @ 60 HZ
Voltage @ Frequency	115.0 V @ 60 HZ 230.0 V @ 60 HZ
Agency Approvals	CURUSEEV
Ambient Temperature	40 °C
Auxillary Box	No Auxillary Box
Auxillary Box Lead Termination	None
Base Indicator	No Mounting
Bearing Grease Type	Polyrex EM (-20F +300F)
Blower	None
Current @ Voltage	2.300 A @ 230.0 V 2.500 A @ 208.0 V 4.600 A @ 115.0 V
Design Code	N
Drip Cover	Drip Cover
Duty Rating	CONT
Efficiency @ 100% Load	76.2 %
Electrically Isolated Bearing	Not Electrically Isolated
Feedback Device	NO FEEDBACK
Front Shaft Indicator	None
Heater Indicator	No Heater
High Voltage Full Load Amps	2.3 a
Insulation Class	F

Part detail

Revision	B
Type	AC
Mech. spec.	34H551
Base	
Status	PRD/A
Elec. spec.	34WGR584
Layout	34LYH551
Eff. date	04-22-2021
CD Diagram	CD0703
Poles	04
Leads	7#18
Proprietary	False
Created date	11-07-2018

Inverter Code	Not Inverter
KVA Code	K
Lifting Lugs	No Lifting Lugs
Locked Bearing Indicator	Locked Bearing
Motor Lead Quantity/Wire Size	7 @ 18 AWG
Motor Lead Termination	Flying Leads
Motor Standards	NEMA
Motor Type	3424LC
Mounting Arrangement	F1
Number of Poles	4
Overall Length	12.51 IN
Power Factor	94
Product Family	General Purpose
Pulley End Bearing Type	Ball
Pulley Face Code	C-Face
Pulley Shaft Indicator	Standard
Rodent Screen	None
RoHS Status	ROHS COMPLIANT
Service Factor	1.25
Shaft Diameter	0.625 IN
Shaft Ground Indicator	No Shaft Grounding
Shaft Rotation	Reversible: Connected OPP STD
Shaft Slinger Indicator	No Slinger
Speed	1725 rpm
Speed Code	Single Speed
Starting Method	Direct on line
Thermal Device - Bearing	None
Thermal Device - Winding	None
Vibration Sensor Indicator	No Vibration Sensor
Winding Thermal 1	Automatic Thermal Overload
Winding Thermal 1 Location	SB
Winding Thermal 2	None

Nameplate

NP3273L									
CAT.NO.	VEL11304A								
SPEC.	34H551R584G1								
HP	.5								
VOLTS	115/230								
AMP	4.6/2.3								
RPM	1725								
FRAME	56C	HZ	60	PH	1				
SER.F.	1.25	CODE	K	DES	N	CL	F		
F.L. AVG. EFF.	76.2	PF	94						
RATING	40C AMB-CONT								
CC								USABLE AT 208V	N/A
DE	6203	ODE	6203						
ENCL	OPEN	SN							
SFA 5.9/2.95									

AC Induction Motor Performance Data

Record # 73454

Typical performance - not guaranteed values

Winding: 34WGR584-R002		Type: 3424LC		Enclosure: OPEN	
Nameplate Data			115 V, 60 Hz: Low Voltage Connection		
Rated Output (HP)	.5		Full Load Torque	1.51 LB-FT	
Volts	115/230		Start Configuration	direct on line	
Full Load Amps	4.6/2.3		Breakdown Torque	4.01 LB-FT	
R.P.M.	1725		Pull-up Torque	3.75 LB-FT	
Hz	60 Phase	1	Locked-rotor Torque	6.42 LB-FT	
NEMA Design Code	N	KVA Code	K	Starting Current	31.9 A
Service Factor (S.F.)	1.25		No-load Current	1.06 A	
NEMA Nom. Eff.	76.2	Power Factor	94	Line-line Res. @ 25°C	1.59 Ω A Ph 2.09 Ω B Ph
Rating - Duty	40C AMB-CONT		Temp. Rise @ Rated Load	37°C	
S.F. Amps	5.9/2.95		Temp. Rise @ S.F. Load	49°C	
			Locked-rotor Power Factor	99.7	
			Rotor inertia	0.057 lb-ft ²	

Load Characteristics 115 V, 60 Hz, 0.5 HP

% of Rated Load	25	50	75	100	125	150	S.F.
Power Factor	89	94	95	96	95	94	95
Efficiency	60	72.9	76.7	76.5	73.2	67.2	73.2
Speed	1783	1768	1749	1727	1694	1648	1694
Line amperes	1.56	2.34	3.34	4.6	5.8	7.69	5.8

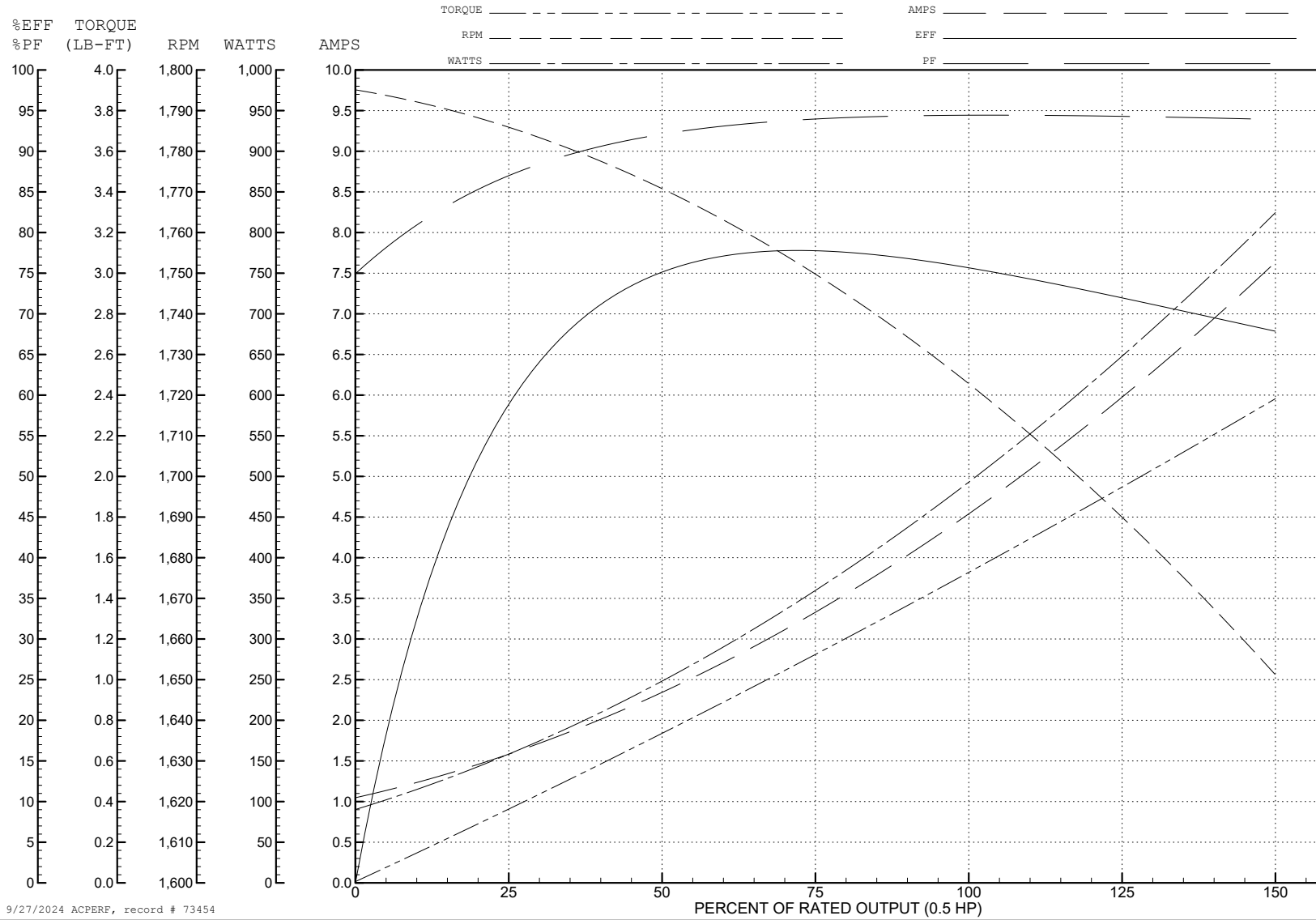
ABB Motors and Mechanical Inc.

WINDING # 34WGR584

Typical performance - not guaranteed values.

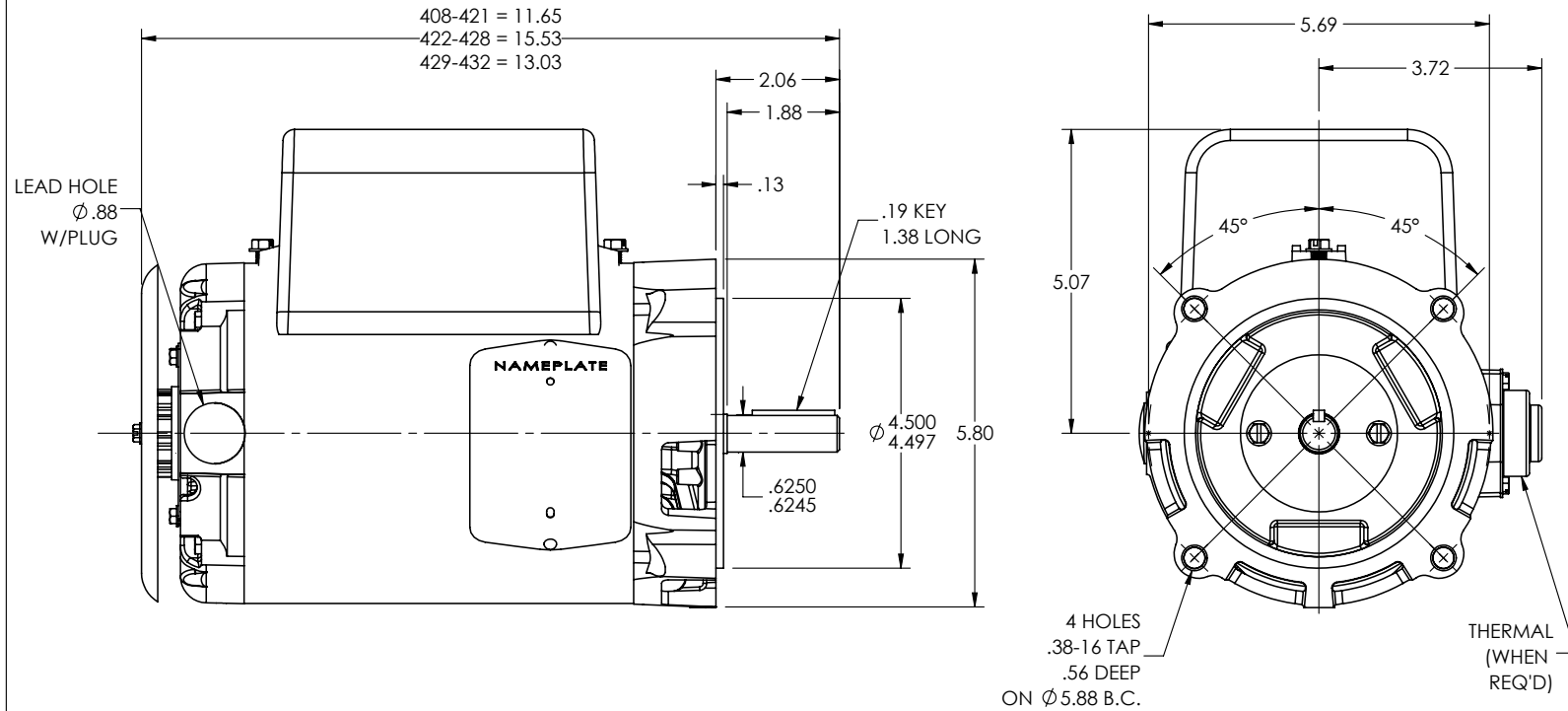
0.5 HP 1 PH 60 HZ 1725 RPM 115 V 3424LC

TORQUES (LB-FT): PO=4.01 PU=3.75 LR=6.42 LRA=31.9



9/27/2024 ACPERF, record # 73454

34LYH551



CUSTOMER IS RESPONSIBLE FOR DETERMINING THAT THE PRODUCT WILL PERFORM SUITABLY IN THE INTENDED APPLICATION

REV. DESC: LOAD TO SOLIDWORKS - REV "-"

REV: A VERSION: 01 REVISED: 02:49:47 12/29/2022 TDR: 000001201165

34LYH551

MODEL NO. 34LYH551
BY: ENFRAJ0

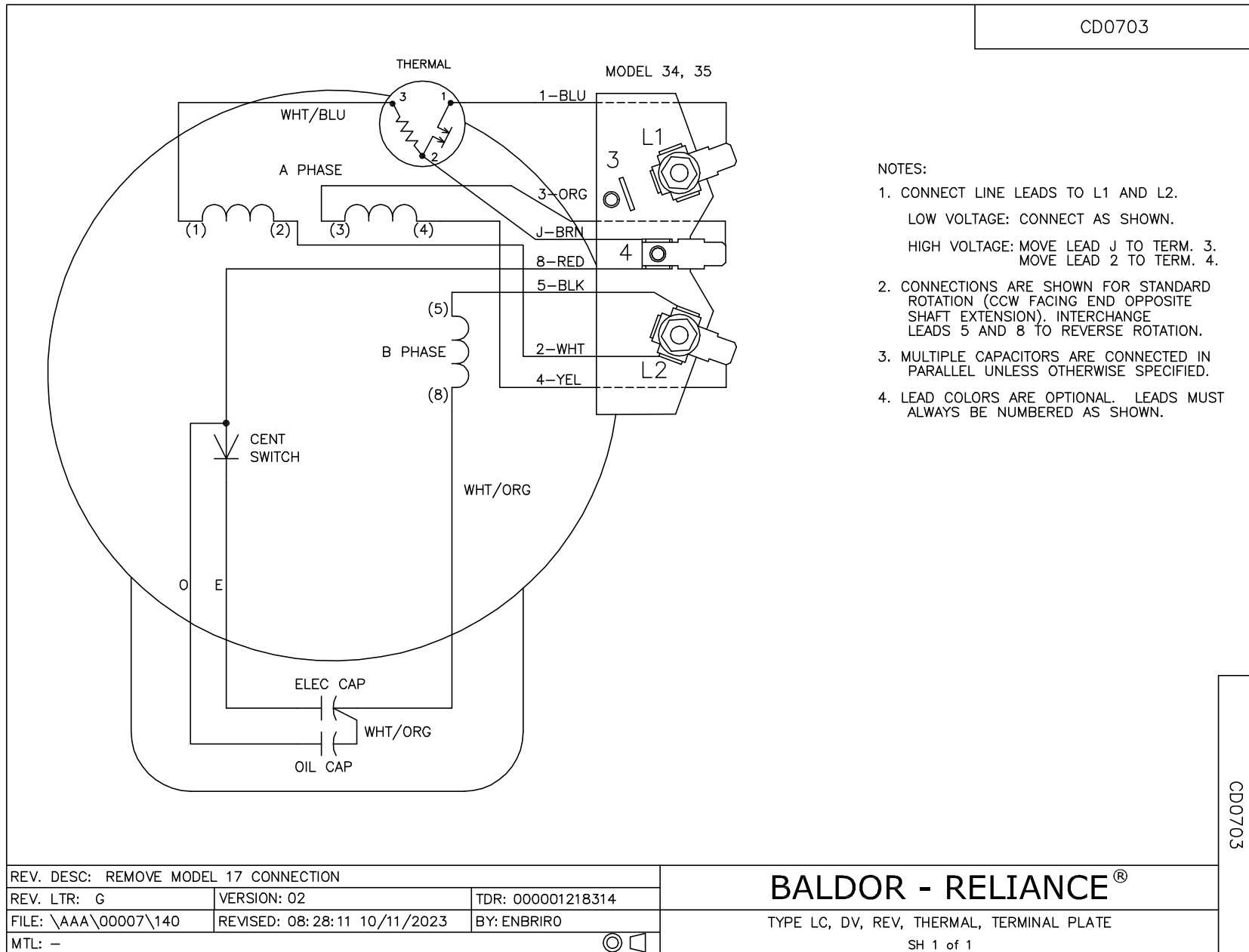
REF: -

BALDOR - RELIANCE®

STD 34LC NEMA 56C OPEN W/TERM PANEL & DRIP COVER

34LYH551

CD0703



CD0703

REV. DESC: REMOVE MODEL 17 CONNECTION		
REV. LTR: G	VERSION: 02	TDR: 000001218314
FILE: \AAA\00007\140	REVISED: 08:28:11 10/11/2023	BY: ENBRIRO
MTL: -		

BALDOR - RELIANCE®

TYPE LC, DV, REV, THERMAL, TERMINAL PLATE
SH 1 of 1