
GE PowerMark Gold™ Load Centres

CSA Selection Guide

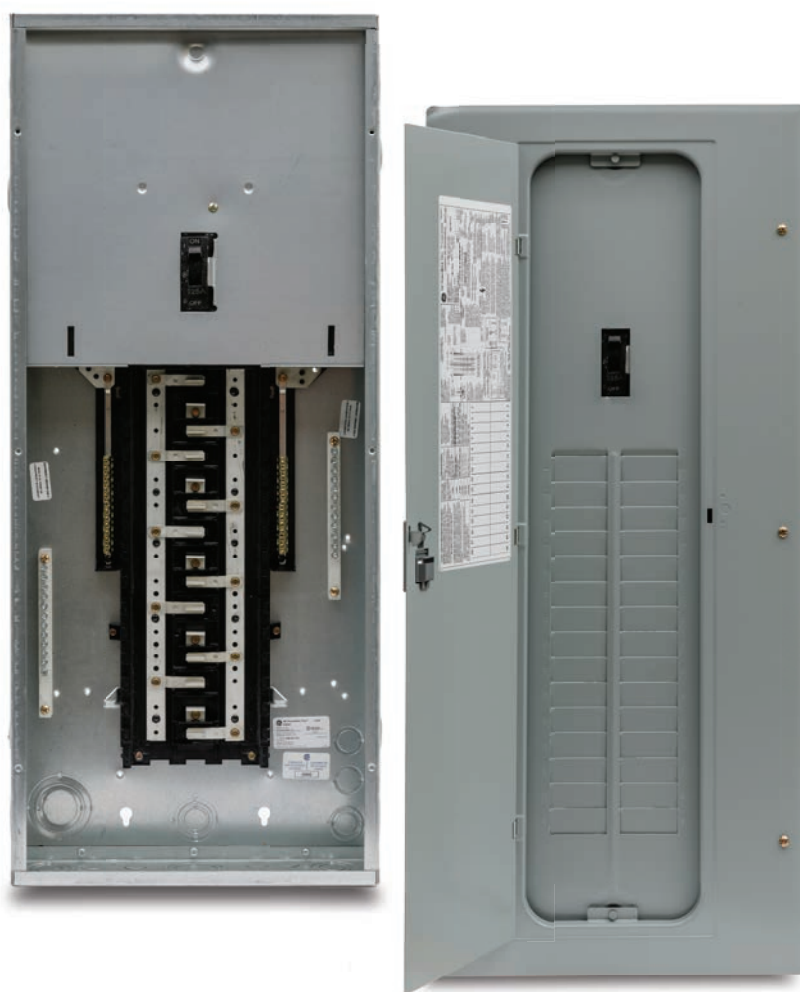


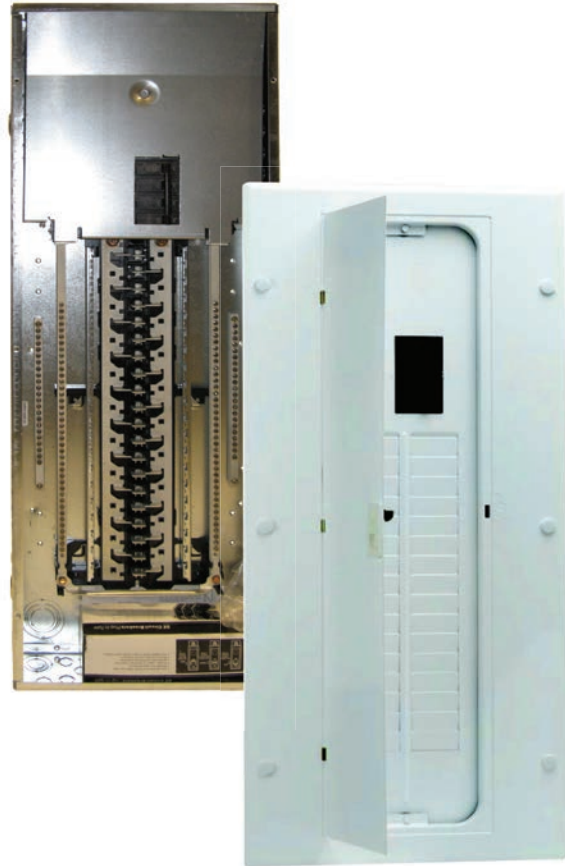
Table of contents

2	PowerMark Load Centres 120/240V - Single Phase
4	PowerMark Load Centres 120/208 V - Three Phase
6	Circuit Breakers
8	Load Centre Contractor Kits
9	Load Centres with White Fronts
10	Generator Panels
11	Load Centre Door Kits for Canada
12	Field Installed Accessories

PowerMark Load Centres

Single phase 40-225A

- Main breaker 22KAIC rated standard - factory installed
- All Load Centres Top or Bottom Entry
- Indoor and outdoor rated enclosures available
- Copper bus standard
- Includes Door Kits
- Suitable for use as service entrance equipment when installed in accordance with the CEC



Single Phase

PowerMark Load Centres

120/240 V - Single Phase

Main Breaker, 22kA

Includes cover

Amperes (MB)	Catalogue Number Type 1 Indoor Enclosure	Catalogue Number Type 3R Outdoor Enclosure	Maximum Circuits				Total 1-Pole Spaces
			1" THQL		1/2" THQP		
			1P	2P	1P	2P	
70	TMC1670CCA	-	16	8	32	14	32
100	TMC1210CCA	TMC1210RCA	12	6	24	10	24
100	TMC1610CCA	-	16	8	32	14	32
100	TMC2010CCA	-	20	10	40	18	40
100	TMC2410CCA	-	24	12	48	22	48
100	TMC3210CCA	-	32	16	64	20	64
100	TMC4010CCA	-	40	20	80	38	80
125	TMC2012CCA	-	20	10	40	18	40
125	TMC1612CCA	-	16	8	32	14	32
125	TMC2412CCA	-	24	12	48	22	48
125	TMC3212CCA	-	32	16	64	20	64
150	TMC2015CCA	-	20	10	40	18	40
150	TMC2415CCA	-	24	12	48	22	48
150	TMC3215CCA	-	32	16	64	30	64
150	TMC4015CCA	-	40	20	80	38	80
200	TMC2020CCA	TMC2020RCA	20	10	40	18	40
200	TMC3220CCA	-	32	16	64	30	64
200	TMC4020CCA	-	40	20	80	38	80

120/240 V - Single Phase

Main Lug

Includes cover

Amperes (ML)	Catalogue Number Type 1 Indoor Enclosure	Catalogue Number Type 3R Outdoor Enclosure	Maximum Circuits				Total 1-Pole Spaces
			1" THQL		1/2" THQP		
			1P	2P	1P	2P	
40	TLC240SCU ⁵	TLC240RCU	2	1	4	1	4
70	TLC270SCU ⁵	TLC270RCU	2	1	4	1	4
100	TLC410C	-	4	2	8	3	8
100	TPLC410C ¹	TPLC410R ¹	4	2	8	3	8
125	TLC612SCU/FCU ^{2,5}	-	6	3	8	3	8
125	TLC612SCUD/FCUD ^{2,3}	-	6	3	12	4	12
125	TLC812SCU/FCU ^{2,5}	TLC812RCU	8	4	12	4	12
125	TLC812SCUD/FCUD ^{2,3}	-	8	4	16	6	16
125	TLC1212CCA	TLC1212RCA	12	6	24	10	24
125	TLC1612CCA	-	16	8	32	14	32
125	TLC2412CCA	TLC2412RCA	24	12	48	22	48
200	TLC1620CCA	-	16	8	32	16	32
200	TLC2020CCA	-	20	10	40	18	40
200	TLC3220CCA	-	32	16	64	30	64
200	TLC4020CCA	TLC4020RCA	40	20	80	38	80
225	TLC4222CCA ⁴	-	42	20	-	-	42

¹ Thermoplastic Enclosure.

² SCU indicates surface mount enclosure. FCU indicates flush mount enclosure.

³ Includes optional door.

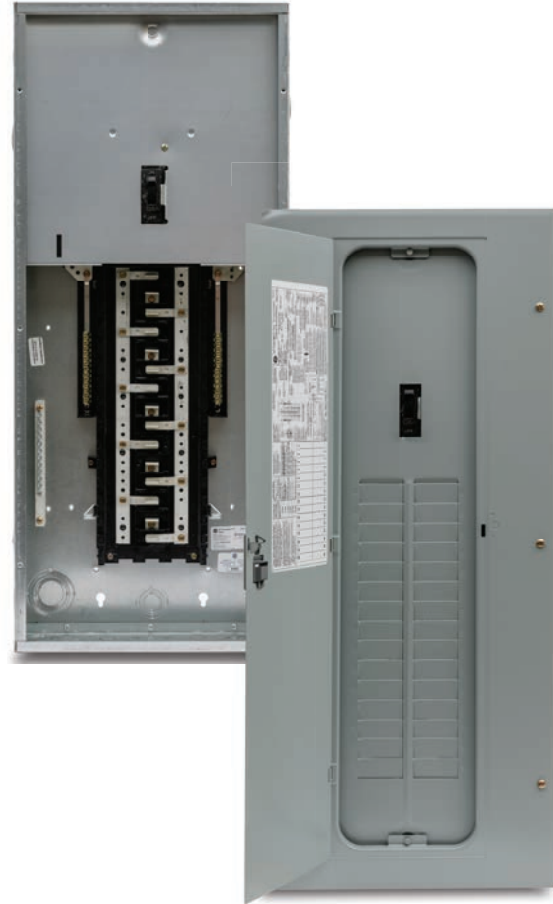
⁴ Accepts 1" THQL breakers only

⁵ Door not included.

PowerMark Plus™ Load Centres

Three phase 100-225A

- All Load Centres Top or Bottom Entry
- Indoor and outdoor rated enclosures available
- Aluminum bus and copper stabs
- Base catalogue number includes cover
- Suitable for use as service entrance equipment when installed in accordance with the CEC



Three Phase

PowerMark Plus Load Centres

120/208 V - Three Phase

Main Breaker, 22kA

Includes cover

Amperes (MB)	Catalogue Number Type 1 Indoor Enclosure	Catalogue Number Type 3R Outdoor Enclosure	Maximum Circuits			Total 1-Pole Spaces
			1" THQL			
			1P	2P	3P	
100	TMC12410C	-	12	6	4	12
100	TMC18410C	-	18	8	6	18
125	TMC30412C	-	30	14	10	30
200	TMC42420C	TMC42420R	42	20	14	42

3ph 120/208V Load Centre only accepts 1" THQL style breakers.

120/208 V - Three Phase

Main Lug

Amperes (ML)	Catalogue Number Type 1 Indoor Enclosure	Catalogue Number Type 3R Outdoor Enclosure	Maximum Circuits			Total 1-Pole Spaces
			1" THQL			
			1P	2P	3P	
125	TLC12412C	TLC12412R	12	6	4	12
150	TLC18415C	-	18	8	6	18
150	TLC24415C	TLC24415R	24	12	8	24
200	TLC30420C	TLC30420R	30	14	10	30
200	TLC42420C	TLC42420R	42	20	14	42
225	TLC30422C	-	30	14	10	30
225	TLC42422C	-	42	20	14	42

3ph 120/208V Load Centre only accepts 1" THQL style breakers.

Circuit Breakers

Q-Line Plug-in Circuit Breakers

120/240 Vac Ampere Rating	10,000AIC		
	Type THQP 1/2-inch Module	Type THQL 1-inch Module	
	120/240 Vac	120/240 Vac	240 Vac
	Catalogue Number	Catalogue Number	Catalogue Number
Single Pole¹			
15 ²	THQP115	THQL1115	–
20 ²	THQP120	THQL1120	–
25	THQP125	THQL1125	–
30	THQP130	THQL1130	–
35	THQP135	THQL1135	–
40	THQP140	THQL1140	–
45	THQP145	THQL1145	–
50	THQP150	THQL1150	–
Std. Pkg.	5 cartons of 20	5 cartons of 10	–



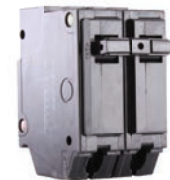
THQP130



THQP230



THQL1120



THQL2140



THQL32020

Two-Pole³: Incorporates Internal Common Trip Bar			
15	THQP215	THQL2115	THQL22015 ⁴
20	THQP220	THQL2120	THQL22020 ⁴
25	THQP225	THQL2125	THQL22025 ⁴
30	THQP230	THQL2130	THQL22030 ⁴
35	THQP235	THQL2135	THQL22035 ⁴
40	THQP240	THQL2140	THQL22040 ⁴
45	THQP245	THQL2145	THQL22045 ⁴
50	THQP250	THQL2150	THQL22050 ⁴
60	–	THQL2160	THQL22060 ⁴
70	–	THQL2170	THQL22070 ⁴
80	–	THQL2180	THQL22080 ⁴
90	–	THQL2190	THQL22090 ⁴
100	–	THQL21100	THQL22100 ⁴
110	–	THQL21110	–
125	–	THQL21125	–
Std. Pkg.	5 cartons of 5	5 cartons of 5	5 cartons of 5

Three-Pole³: Incorporates Internal Common Trip Bar			
15	–	–	THQL32015
20	–	–	THQL32020
25	–	–	THQL32025
30	–	–	THQL32030
35	–	–	THQL32035
40	–	–	THQL32040
45	–	–	THQL32045
50	–	–	THQL32050
60	–	–	THQL32060
70	–	–	THQL32070
80	–	–	THQL32080
90	–	–	THQL32090
100	–	–	THQL32100
Std. Pkg.	–	–	5 cartons of 3

¹UL Listed as HACR (heating, air conditioning and refrigeration).

²UL Listed as SWD (switching duty). Suitable for 120 volts ac fluorescent lighting loads.

³15-100 amp UL Listed as HACR (heating air conditioning and refrigeration).

⁴Required for three-phase and High Leg Delta Systems only.

Circuit Breakers

Arc Fault²

cULus

Arc-Fault Circuit Interrupters No. 1699

	Ampere Rating	1 Pole, 120/240 Volts ac ¹ Catalogue Number	1-Pole, 120/240 Volts ac Catalogue Number
10,000 AIC			
	15	THQL1115AF2	THQL1115AF2S
	20	THQL1120AF2	THQL1120AF2S
22,000 AIC			
	15	THHQL1115AF2	-
	20	THHQL1120AF2	-
Std. Pkg.		10 Cartons of 1	-

As of Jan. 1, 2008, 2005 NEC™ requires combination AFCI.

¹Combination AFCI compliant with 2008 NEC™ and later

²For 2-Pole shared neutral applications use two 1-pole circuit breakers with a handle tie. See DET-719 for more details on our Arc Fault products.



THQL1115AF2



THQL1115AF2S

Ground Fault with Self-Test Feature

cULus

Ground Fault Circuit Interrupters UL943 ed5 (5 milliamperes)

	Ampere Rating	1-Pole, 120 Volts ac Catalogue Number	1-Pole, 120 Volts ac Catalogue Number	2-Pole, 120/240 Volts ac Catalogue Number
10,000 AIC				
	15	THQL1115GFT	THQL1115GFTS	THQL2115GFT
	20	THQL1120GFT	THQL1120GFTS	THQL2120GFT
	25	THQL1125GFT	-	THQL2125GFT
	30	THQL1130GFT	-	THQL2130GFT
	40	-	-	THQL2140GFT ³
	50	-	-	THQL2150GFT ³
22,000 AIC				
	15	THHQL1115GFT	-	THHQL2115GFT
	20	THHQL1120GFT	-	THHQL2120GFT
	25	THHQL1125GFT	-	THHQL2125GFT
	30	THHQL1130GFT	-	THHQL2130GFT

³ UL & CSA



THQL2120GFT



THQL1115GFTS

Ground Fault with Equipment Protection

cULus

Ground Fault Circuit Interrupters No. 943 30 milliampere ground fault trip level

	Ampere Rating	1-Pole, 120 Volts ac Catalogue Number	2-Pole, 120/240 Volts ac Catalogue Number
10,000 AIC			
	15	THQL1115GFEP	THQL2115GFEP
	20	THQL1120GFEP	THQL2120GFEP
	30	THQL1130GFEP	THQL2130GFEP
22,000 AIC			
	15	-	THHQL2115GFEP
	20	-	THHQL2120GFEP
Std. Pkg.		10 Cartons of 1	10 Cartons of 1



THQL1120GFEP

Dual Function GFCI/AFCI Ground Fault & Combination Arc Fault Circuit Breaker

UL Listed

	Ampere Rating	1-Pole, 120/240 Volts ac Catalogue Number	1-Pole, 120/240 Volts ac Catalogue Number
10,000 AIC			
	15	THQL1115DF	THQL1115DFS
	20	THQL1120DF	THQL1120DFS
Std. Pkg.		10 Cartons of 1	10 Cartons of 1



THQL1115DF



THQL1115DFS

Surge Protectors

Description	Catalogue Number
SurgePro AC 27KA Panel-Mount Surge Protector	THQLSURGE

Load Centre Contractor Kits

'1K' Load Centre Contractor Kits 120/240 V - Single Phase

EEMAC 1 c/w 22kA Main Breaker, Door, and
1/2" Breakers: 10-1p15A, 3-2p15A, 1-2p30A, 1-2p40A

Catalogue Number	Description
TMC1610CCA1K	100A 16/32 CCT
TMC2410CCA1K	100A 24/48 CCT
TMC3210CCA1K	100A 32/64 CCT
TMC3220CCA1K	200A 32/64 CCT
TMC4020CCA1K	200A 40/80 CCT

'2K' Load Centre Contractor Kits 120/240 V - Single Phase

EEMAC 1 c/w 22kA Main Breaker, Door, and
1" Breakers: 10-1p15A, 3-2p15A, 1-2p30A, 1-2p40A

Catalogue Number	Description
TMC2410CCA2K	100A 24/48 CCT

'3K' Load Centre Contractor Kits 120/240V Single Phase

EEMAC 1 c/w 22kA Main Breaker, Door, and
1/2" Breakers: 14-1p15A, 2-2p15A, 3-2p20A, 2-2p30A, 1-2P40A

Catalogue Number	Description
TMC4015CCA3K	150A 40/80 CCT
TMC4020CCA3K	200A 40/80 CCT

'4K' Load Centre Contractor Kits 120/240V Single Phase

EEMAC 1c/w 22kA Main Breaker, Door, and
1" Breakers: 14-1p15A, 2-2p15A, 3-2p20A, 2-2p30A, 1-2P40A

Catalogue Number	Description
TMC4020CCA4K	200A 40/80 CCT

Outdoor '3R' 120/240V Single Phase Main Breaker Load Centres

EEMAC 3R c/w 22kA Main Breaker and Door:

Catalogue Number	Description
TMC1210RCA	100A 12/24 CCT
TMC2020RCA	200A 20/40 CCT

PowerMark Gold Load Centres

100-225 Amp Canadian Load Centers with White Fronts

- 4-to-6 week lead-times
- Order through empower
- Pricing is through normal routines
- Minimum order is full pallet QTY of same Product Number
- Quantities over full pallet are allowed
- Cannot combine Product Numbers to get to pallet QTY
- For individual product descriptions, see Canadian Load Center CSA Selection Guide, DEP-135



Single Phase

Ordering Information

Catalogue Number	Description	UPC	Pallet QTY
TLC2412CCAW	24/48CT 125A 1PH MLO LOADCTR CSA WHITE	078316443019	24
TLC4020CCAW	40/80CT 200A 1PH MLO LOADCTR CSA WHITE	078316443020	24
TLC4222CCAW	42/84CT 225A 1PH MLO LOADCTR CSA WHITE	078316443021	24
TMC2410CCAW	24/48CT 100A 1PH MCB LOADCTR CSA WHITE	078316443022	24
TMC2412CCAW	24/48CT 125A 1PH MCB LOADCTR CSA WHITE	078316443023	24
TMC3220CCAW	32/64CT 200A 1PH MCB LOADCTR CSA WHITE	078316443024	24
TMC4020CCAW	40/80CT 200A 1PH MCB LOADCTR CSA WHITE	078316443025	24
TLC1212CCAW	12/24CT 125A 1PH MLO LOADCTR CSA WHITE	078316443026	40
TLC1612CCAW	16/32CT 125A 1PH MLO LOADCTR CSA WHITE	078316443027	40
TMC1210CCAW	12/24CT 100A 1PH MCB LOADCTR CSA WHITE	078316443028	40
TMC1610CCAW	16/32CT 100A 1PH MCB LOADCTR CSA WHITE	078316443029	40
TMC1612CCAW	16/32CT 125A 1PH MCB LOADCTR CSA WHITE	078316443030	40
TMC4010CCAW	40/80CT 100A 1PH MCB LOADCTR CSA WHITE	783164632002	24

Generator Panels

Generator Panels

NEMA 1 Enclosure

Catalogue Number	Description
TM830FCUGEN	30A, 8 cct Panel, Flush Mount
TM830SCUGEN	30A, 8 cct Panel, Surface Mount
TM860FCUGEN	60A, 8 cct Panel, Flush Mount
TM860SCUGEN	60A, 8 cct Panel, Surface Mount

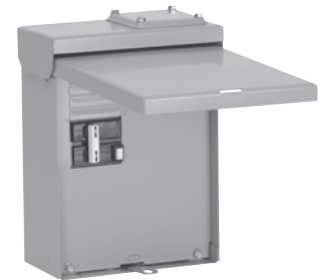


TM860RCUGEN
Generator Panel

Generator Panels

NEMA 3R Enclosure

Catalogue Number	Description
TM830RCUGEN	30A, 8 cct Panel
TM860RCUGEN	60A, 8 cct Panel



TL412R250GF
Spa Panel

Spa Panels

NEMA 3R Enclosure

Catalogue Number	Description
TL412R250GF	125A, 50A GFCI, 8 cct Panel
TL412R260GF	125A, 60A GFCI, 8 cct Panel

Door Kits for Canada

Canada Single Phase

Main Amp Rating	Load Centre Cat. No.	Mod. No.	Front Cat. No
100	TMC1210CCA	M01	TMC12A
	TMC1210CCU	M01	TMC12A
	TMC1610CCA	M01	TMC16A
	TMC1610CCU	M01	TMC16A
	TMC2010CCA	M01	TMC20A
	TMC2010CCU	M01	TMC20A
	TMC2410CCA	M01	TMC24A
	TMC2410CCU	M01	TMC24A
	TMC3210CCA	M01	TMC32A
	TMC3210CCU	M01	TMC32A
	TLC1212CCA	M01	TLC12A
	TLC1212CCU	M01	TLC12A
	TLC1612CCA	M01	TLC16A
	TLC1612CCU	M01	TLC16A
125	TLC2412CCA	M01	TLC24A
	TLC2412CCU	M01	TLC24A
	TLC612FCU	M01	TLC6FC
	TLC612FCUD	M01	TLC8FCD
	TLC612SCU	M01	TLC6SC
	TLC612SCUD	M01	TLC6SCD
	TLC812FCU	M01	TLC8FC
	TLC812FCUD	M01	TLC8FCD
	TLC812SCU	M01	TLC8SCD
	TLC812SCUD	M01	TLC8SCD
	TMC1612CCA	M01	TMC16B
	TMC1612CCU	M01	TMC16B
	TMC2012CCA	M01	TMC20B
	TMC2012CCU	M01	TMC20B
150	TMC2412CCA	M01	TMC24B
	TMC2412CCU	M01	TMC24B
	TMC3212CCA	M01	TMC32B
	TMC3212CCU	M01	TMC32B
	TMC2015CCA	M06	TMC20CD
	TMC2015CCU	M01	TMC20C
	TMC2015CCU	M06	TMC20CD
	TMC2415CCA	M06	TMC24CD
	TMC2415CCU	M01	TMC24C
	TMC2415CCU	M06	TMC24CD
	TMC3215CCA	M06	TMC32CD
	TMC3215CCU	M01	TMC32C
	TMC3215CCU	M06	TMC32CD
	TMC4015CCA	M06	TMC40AD
TMC4015CCU	M01	TMC40A	
200	TMC4015CCU	M06	TMC40AD
	TLC1620CCA	M01	TLC16B
	TLC1620CCU	M01	TLC16B
	TLC2020CCA	M01	TLC20A
	TLC2020CCU	M01	TLC20A
	TLC3220CCA	M01	TLC32A
	TLC3220CCU	M01	TLC32A
	TLC4020CCA	M01	TLC40A
	TLC4020CCU	M01	TLC40A
	TMC2020CCA	M06	TMC20DD
	TMC2020CCU	M01	TMC20D
	TMC2020CCU	M06	TMC20DD
	TMC3220CCA	M06	TMC32DD
	TMC3220CCU	M01	TMC32D
225	TMC3220CCU	M06	TMC32DD
	TMC4020CCA	M06	TMC40BD
	TMC4020CCU	M01	TMC40B
	TMC4020CCU	M06	TMC40BD
	TLC4222CCA	M01	TLC42A
	TLC4222CCU	M01	TLC42A

Three Phase

Main Amp Rating	Load Centre Cat. No.	Mod. No.	Front Cat. No
100	TMC12410C	M01	TMC124A
	TMC18410C	M01	TMC184A
125	TMC30412C	M01	TMC304A
150	TLC18415C	M01	TLC184A
	TLC24415C	M01	TLC244A
200	TLC18420C	M01	TLC184B
	TLC30420C	M01	TLC304A
	TLC42420C	M01	TLC424A
	TMC42420C	M01	TMC424A
225	TLC30422C	M01	TLC304B
	TLC42422C	M01	TLC424B

International Single Phase

Main Amp Rating	Load Centre Cat. No.	Mod. No.	Front Cat. No
125	TLM1212CCUX2	M01	TLM12ACX
	TLM1612CCUX2	M01	TLM16ACX
	TLM2412CCUX2	M01	TLM2412
	TLM612FCUDX2	M01	TLM6FCD
	TLM612SCUDX2	M01	TLM6SCD
	TLM812FCUDX2	M01	TLM8FCD
150	TLM812SCUDX2	M01	TLM8SCD
	TL1615CCUX2	M01	TL16CX
	TL2015CCUX2	M01	TL20CX
200	TL2020CCUX2	M01	TL20ACX
	TL3220CCUX2	M01	TL32CX
225	TL4020CCUX2	M01	TL40CX
	TL4222CCUX2	M01	TL42DCX

Three Phase

Main Amp Rating	Load Centre Cat. No.	Mod. No.	Front Cat. No
100	TM12410CBX2	M01	TM12CBX2
	TM12410CBX2	M01	TM12CBX2
	TM12410CX2	M02	TM12ACX
	TM12410CX2LB	M02	TM12ACX
	TM18410CX2	M02	TM18ACX
	TL12412CX2	M02	TL12ACX
125	TM30412CX2	M02	TM30BCX
	TL18415CX2	M02	TL18ACX
150	TL24415CX2	M02	TL24ACX
	TM24415CBX2	M02	TMB24BCX
	TM24415CBX2LB	M02	TMB24BCX
	TM24415CX2	M02	TM24BCX
	TM24415CX2LB	M02	TM24BCX
	TM30415CX2	M02	TM30BCX
200	TM30415CX2LB	M02	TM30BCX
	TM42415CX2	M02	TM42DCX
	TL18420CX2	M02	TL18BCX
	TL30420CX2	M02	TL30DCX
	TL42420CX2	M02	TL42BCX
	TM24420CX2	M02	TM24DCX
225	TM24420CX2	M02	TM24DCX
	TM30420CX2	M02	TM30DCX
	TM42420CX2	M02	TM42ECX
	TM42420CX2	M02	TM42ECX
	TM42420CX2LB	M02	TM42ECX
	TL30422CX2	M01	TL30ACX

Most of the items in the shaded rows are obsolete. In addition to ordering the replacement front with the largest model number, order a new THQMV (KR main). The catalog number will be THQMVXXXD where XXX is the main breaker amp rating. Example: THQMV200D for a 200A main breaker.

Field Installed Accessories

PowerMark Plus™ Equipment Ground Kits

Description	Standard Package Quantity	Catalogue Number
(4) 14-8Cu/12-8AL, (3) 14-4Cu/6-4AL	20	TGL1
(11) 14-8Cu/12-8AL, (3) 14-4Cu/6-4AL	20	TGL2 ¹
(7) 14-8Cu/12-8AL, (3) 14-4Cu/6-4AL, (2) 14-4Cu/12-4AL, (1) 14-2Cu/AL	20	TGL8 ¹
(1) 6-2/0Cu/Al Number of Terminals, Equipment Ground Kits	20	TGL20 ²
(3) 10-1/0 Cu/Al Number of Terminals for 400 and 600 Amp	1	TNG3 ³
(6) 10-1/0 Cu/Al Number of Terminals for 400 and 600 Amp	1	TNG6 ⁴

¹TGL2, TGL4 and TGL8 mount interchangeably

²Add-on Equipment Ground Lug (for use on any TGL Kit)

³Suitable for use with up to six TPLUG108 lugs or six crimp lugs per pole



TGL2



TGL20 combined with TGL1

PowerMark Gold Equipment Ground and Isolated Ground Bar Kits^{4,5}

Description	Standard Package Quantity	Catalogue Number
4-hole Ground	1	TGK4
12-hole Ground	1	TGK12
24-hole Ground	1	TGK24
32-hole Ground	1	TGK32
42-hole Ground	1	TGK42

⁴6-12 circuit indoor load centers use PowerMark Plus style neutrals and grounds

⁵Add TGKIS for isolated ground and mount to ground kit.



TGK12

PowerMark Gold Neutral Kits

Description	Wire Range	Standard Package Quantity	Catalogue Number
PowerMark Gold Neutral Kit - Mounted on top of neutral only	6-2/0	1	TNLK20
PowerMark Gold Neutral Kit - Mounted on top of neutral only	6-250	1	TNLK250



TNLK250 with TGKIS

Isolated Ground Bus Bars Equipment Ground Kit

Description	Standard Package Quantity	Catalogue Number
Isolated Ground Bar Kit (order with TGK Equipment Ground Kits)	1	TGKIS
Isolated Ground Bar Feet (Order with TGK8)	1	TGKIS2



TNLK250

Sub-feed and Feed-thru Lugs

UL Listed

For use in load centers to economically supply power to a subpanel.

Poles	Ampere Rating	Catalogue Number
2	125	THLK2125
3	125	THLK3125
2	150	THLK2150
2	200	THLK2200 ⁶
3	225	THLK3225 ⁷

⁶For use with PowerMark Gold load centers only

⁷For use with three-phase load centers only. Includes mounting base.



THLK2125

Field Installed Accessories

Front Filler Plates

Description	Standard Package Quantity	Catalogue Number
1/2" Front Filler Plate	100	TFH
1" Front Filler Plate	50	TQLFP1

Covers 1/2" rectangular breaker knockouts
Covers 1" rectangular breaker knockouts



TFH

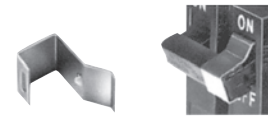
Universal Raintight Hubs

Description	Base Size (in.)	Standard Package Quantity	Catalogue Number
3/4" Diameter	3	10	TC75
1" Diameter	3	10	TC100
1-1/4" Diameter	3	10	TC125
1-1/2" Diameter	3	10	TC150
2" Diameter	3	10	TC200
2-1/2" Diameter	3	10	TC250
3" Diameter	3	5	TC300
Closing Cap	3	10	TCCP
2" Diameter	4	-	TCU27 ¹
2-1/2" Diameter	4	-	TCU28 ¹
3" Diameter	4	-	TCU30 ¹
3-1/2" Diameter	4	-	TCU35 ¹
4" Diameter	4	-	TCU40 ¹
4" Cover Plate	4	-	TCUP ¹

¹For 40 and 42 circuit units in R8 boxes only.



TC150



THL103

Handle Locks - Padlocking

Description	Breaker Type	Catalogue Number
THQP Padlocking Handle Lock	THQP	TQPPL
THQL Padlocking Handle Lock	THQL	THP100
TQD Padlocking Handle Lock	TQD	TQDPLD1

Snap on handle lock
Padlock not included

Handle Locks - Non Padlocking

Description	Breaker Type	Catalogue Number
THQP Non Padlocking Handle Lock	THQP	TQPL
THQL Non Padlocking Handle Lock	THQL	THL103

Snap on handle lock

Handle Ties

Description	Breaker Type	Catalogue Number
Handle Ties for THQP Breakers - Solid Snap-on Trip Indicating	THQP	THT1 ²
Handle Ties for THQP Breakers - For 2 THQPs separated by 2 side-by-side THQPs	THQP	THT2 ²
Snap-on Handle Tie - Trip Indicating	TQB	TQHT1 ²
	TQC	
	TQL	
Snap-on Handle Tie - Solid	TQB	THT104 ²
	TQC	
	TQL	
Multiwire Branch Breaker Handle Tie Kits	TQB	TQ3HTK ³ TQ4HTK ⁴
	TQC	
	TQL	

All multi-pole breakers have internal common trip
Handle ties provide manual on-off capability only between one-pole devices

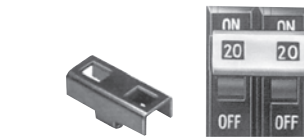
²For two single-pole breakers

³For three single-pole breakers - kit includes (10) pcs.

⁴For four single-pole breakers - kit includes (10) pcs.

Load Center Hardware Kits Hardware

Description	Standard Package Quantity	Catalogue Number
Powermark Gold Hardware kit containing 10 interior mounting screws	1	THDWRKIT2



THT1



THT104



THT2



TQHT1

ABB Campus Montréal

800 Hymus Boulevard St-Laurent
QC Canada
H4S 0B5

Customer Service / Technical support
epsupport@ca.abb.com

© Copyright 2019 ABB. All rights reserved
Information provided is subject to change without notice. Please verify all details with ABB. All values are design or typical values when measured under laboratory conditions, and ABB makes no warranty or guarantee, express or implied, that such performance will be obtained under end-use conditions.

GE is a registered trademark used under license from General Electric company.
PowerMark Gold and PowerMark Plus are trademarks of ABB Inc.

ca.geindustrial.com/products/load-centers