

**BALDOR • RELIANCE**

---

# Customer information packet

## L1512T

10HP, 1725RPM, 1PH, 60HZ, 215T, 3737LC, OPSB, F

Class - None

Division - Not Applicable

## Specifications

Enclosure	OPSB
Frame	215T
Frame Material	Steel
Frequency	60.00 Hz
Haz Area Class and Group	None
Haz Area Division	Not Applicable
Motor Letter Type	Cap Start, Cap Run
Output @ Frequency	10.000 HP @ 60 HZ
Phase	1
Synchronous Speed @ Frequency	1800 RPM @ 60 HZ
Voltage @ Frequency	230.0 V @ 60 HZ
Agency Approvals	UR CSA
Ambient Temperature	40 °C
Auxillary Box	No Auxillary Box
Auxillary Box Lead Termination	None
Base Indicator	Rigid
Bearing Grease Type	Polyrex EM (-20F +300F)
Blower	None
Current @ Voltage	39.000 A @ 230.0 V
Design Code	L
Drip Cover	No Drip Cover
Duty Rating	CONT
Efficiency @ 100% Load	85.5 %
Electrically Isolated Bearing	Not Electrically Isolated
Feedback Device	NO FEEDBACK
Front Face Code	Standard
Front Shaft Indicator	None
Heater Indicator	No Heater
High Voltage Full Load Amps	39.0 a
Insulation Class	F
Inverter Code	Not Inverter

## Part detail

Revision	Q
Type	AC
Mech. spec.	37L969
Base	
Status	PRD/A
Elec. spec.	37WGT923
Layout	37LYL969
Eff. date	05-13-2024
CD Diagram	CD2094
Poles	04
Leads	2#10 A PH,2#14 B PH
Proprietary	False
Created date	11-16-2007

<b>KVA Code</b>	E
<b>Lifting Lugs</b>	Standard Lifting Lugs
<b>Locked Bearing Indicator</b>	No Locked Bearing
<b>Motor Lead Exit</b>	Cap Box
<b>Motor Lead Quantity/Wire Size</b>	2 @ 10 AWG, A PH
<b>Motor Lead Termination</b>	Flying Leads
<b>Motor Standards</b>	NEMA
<b>Motor Type</b>	3737LC
<b>Mounting Arrangement</b>	F1
<b>Number of Poles</b>	4
<b>Overall Length</b>	17.45 IN
<b>Power Factor</b>	97
<b>Product Family</b>	General Purpose
<b>Pulley End Bearing Type</b>	Ball
<b>Pulley Face Code</b>	Standard
<b>Pulley Shaft Indicator</b>	Standard
<b>Rodent Screen</b>	None
<b>Service Factor</b>	1.00
<b>Shaft Diameter</b>	1.375 IN
<b>Shaft Extension Location</b>	Pulley End
<b>Shaft Ground Indicator</b>	No Shaft Grounding
<b>Shaft Rotation</b>	Reversible
<b>Shaft Slinger Indicator</b>	No Slinger
<b>Speed</b>	1725 rpm
<b>Speed Code</b>	Single Speed
<b>Starting Method</b>	Direct on line
<b>Thermal Device - Bearing</b>	None
<b>Thermal Device - Winding</b>	None
<b>Vibration Sensor Indicator</b>	No Vibration Sensor
<b>Winding Thermal 1</b>	None
<b>Winding Thermal 2</b>	None

**Nameplate**

<b>NP1256L</b>									
<b>CAT.NO.</b>	L1512T								
<b>SPEC.</b>	37L969T923G1								
<b>HP</b>	10								
<b>VOLTS</b>	230								
<b>AMP</b>	39								
<b>RPM</b>	1725								
<b>FRAME</b>	215T		<b>HZ</b>	60		<b>PH</b>	1		
<b>SER.F.</b>	1.00	<b>CODE</b>	E	<b>DES</b>	L	<b>CLASS</b>	F		
<b>NEMA-NOM-EFF</b>	85.5	<b>PF</b>	97						
<b>RATING</b>	40C AMB-CONT								
<b>CC</b>									
<b>DE</b>	6307		<b>ODE</b>	6206					
<b>ENCL</b>	OPSB	<b>SN</b>							

**Accessories**

<b>Part number</b>	<b>Description</b>	<b>Multiplier</b>
37-1404	C FACE KIT	A8

**AC Induction Motor Performance Data**

Record # 61323

Typical performance - not guaranteed values

Winding: 37WGT923-R003		Type: 3737LC		Enclosure: OPSB	
<b>Nameplate Data</b>			<b>230 V, 60 Hz: Single Voltage Motor</b>		
Rated Output (HP)	10	Full Load Torque	30.3 LB-FT		
Volts	230	Start Configuration	direct on line		
Full Load Amps	39	Breakdown Torque	76.1 LB-FT		
R.P.M.	1725	Pull-up Torque	51.8 LB-FT		
Hz	60 Phase	1	Locked-rotor Torque	78.4 LB-FT	
NEMA Design Code	L KVA Code	E	Starting Current	211 A	
Service Factor (S.F.)		1	No-load Current	6.2 A	
NEMA Nom. Eff.	85.5 Power Factor	97	Line-line Res. @ 25°C	0.242 Ω A Ph 0.538 Ω B Ph	
Rating - Duty		40C AMB-CONT	Temp. Rise @ Rated Load	73°C	

**Load Characteristics 230 V, 60 Hz, 10 HP**

% of Rated Load	25	50	75	100	125
Power Factor	94	97	98	97	96
Efficiency	76.1	86	87.5	85.7	81.8
Speed	1785	1770	1751	1727	1699
Line amperes	11.3	19.2	28.3	38.8	50.9

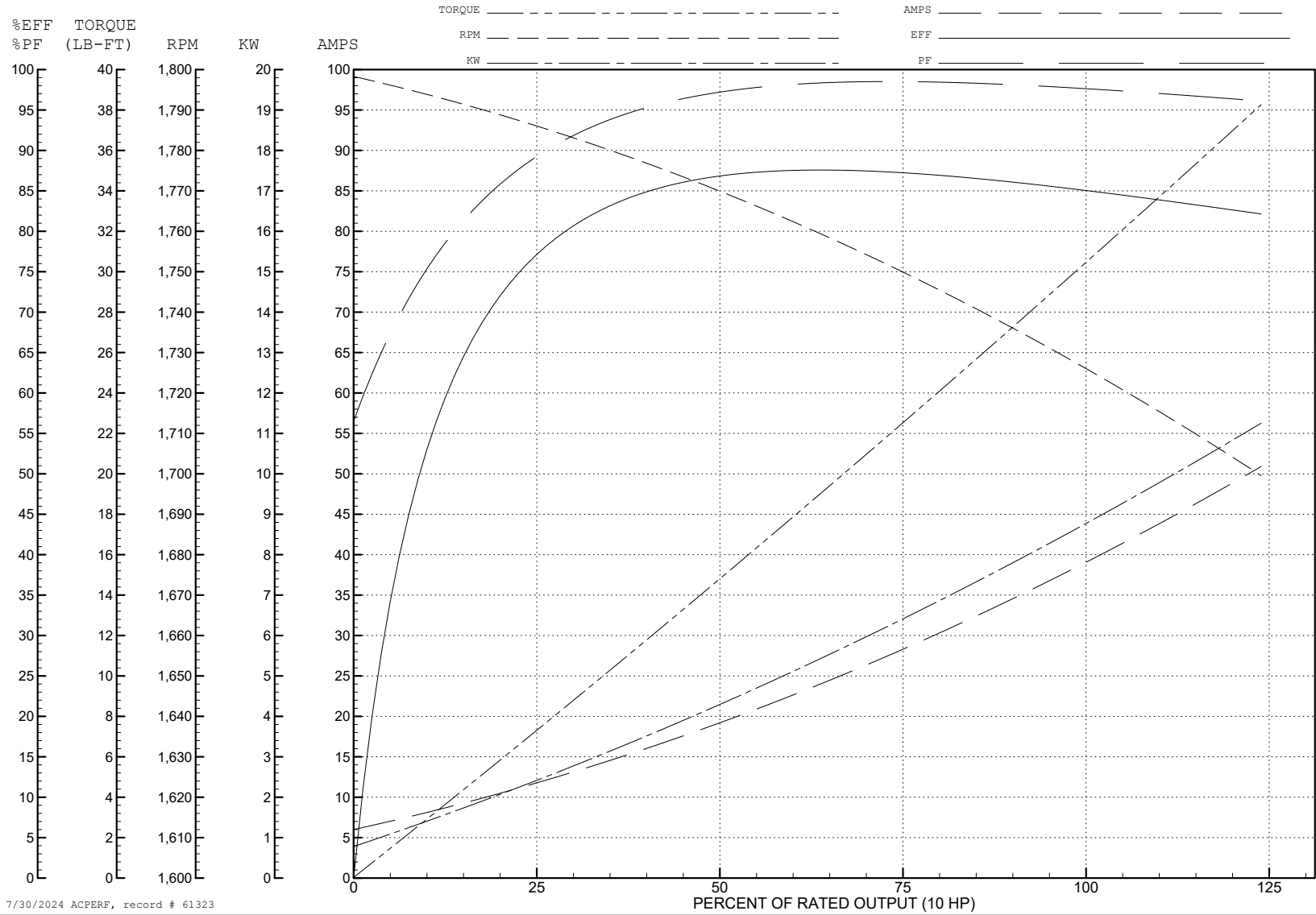
ABB Motors and Mechanical Inc.

WINDING # 37WGT923

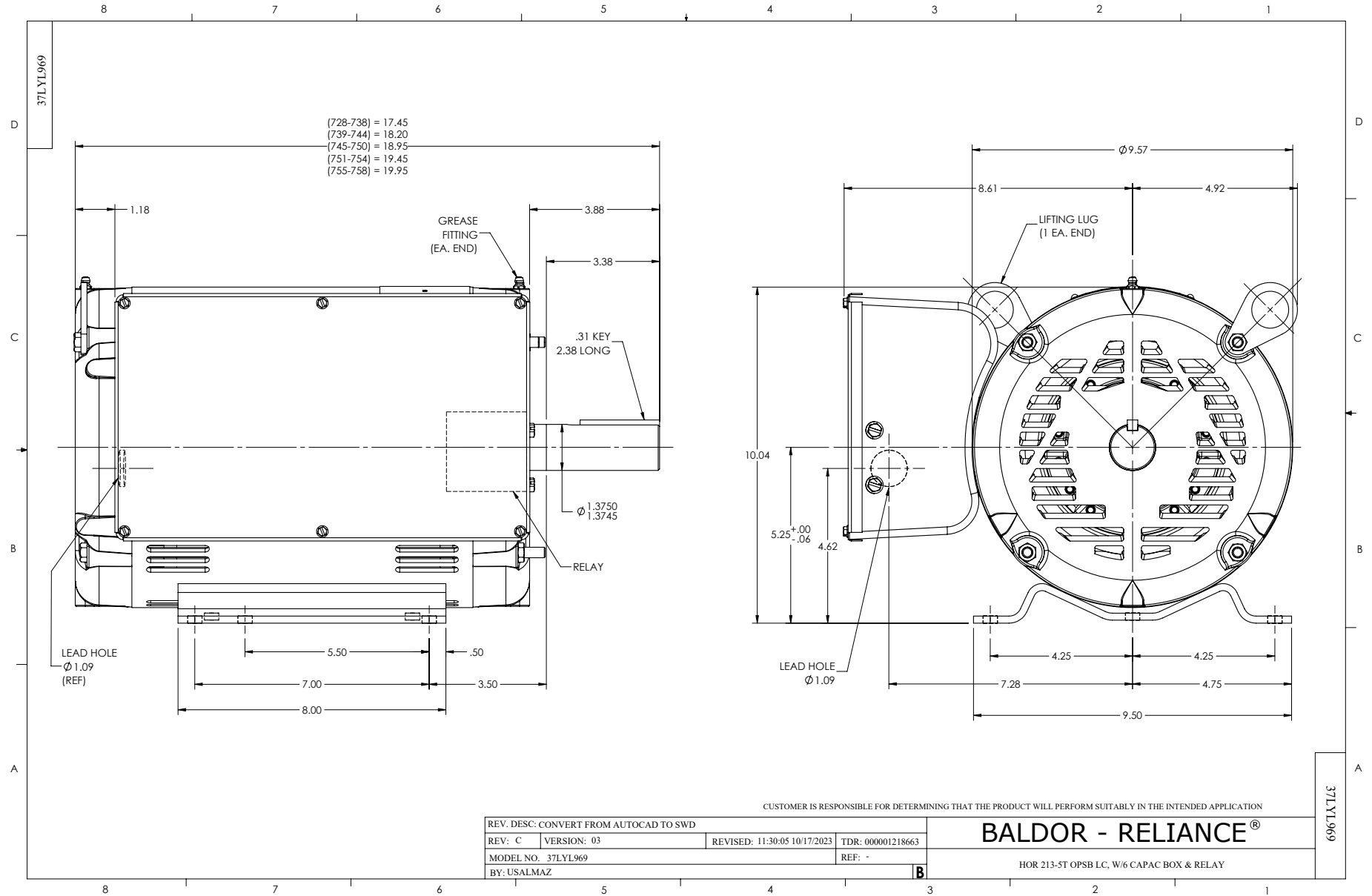
Typical performance - not guaranteed values.

10 HP 1 PH 60 HZ 1725 RPM 230 V 3737LC

TORQUES (LB-FT): PO=76.1 PU=51.8 LR=78.4 LRA=211

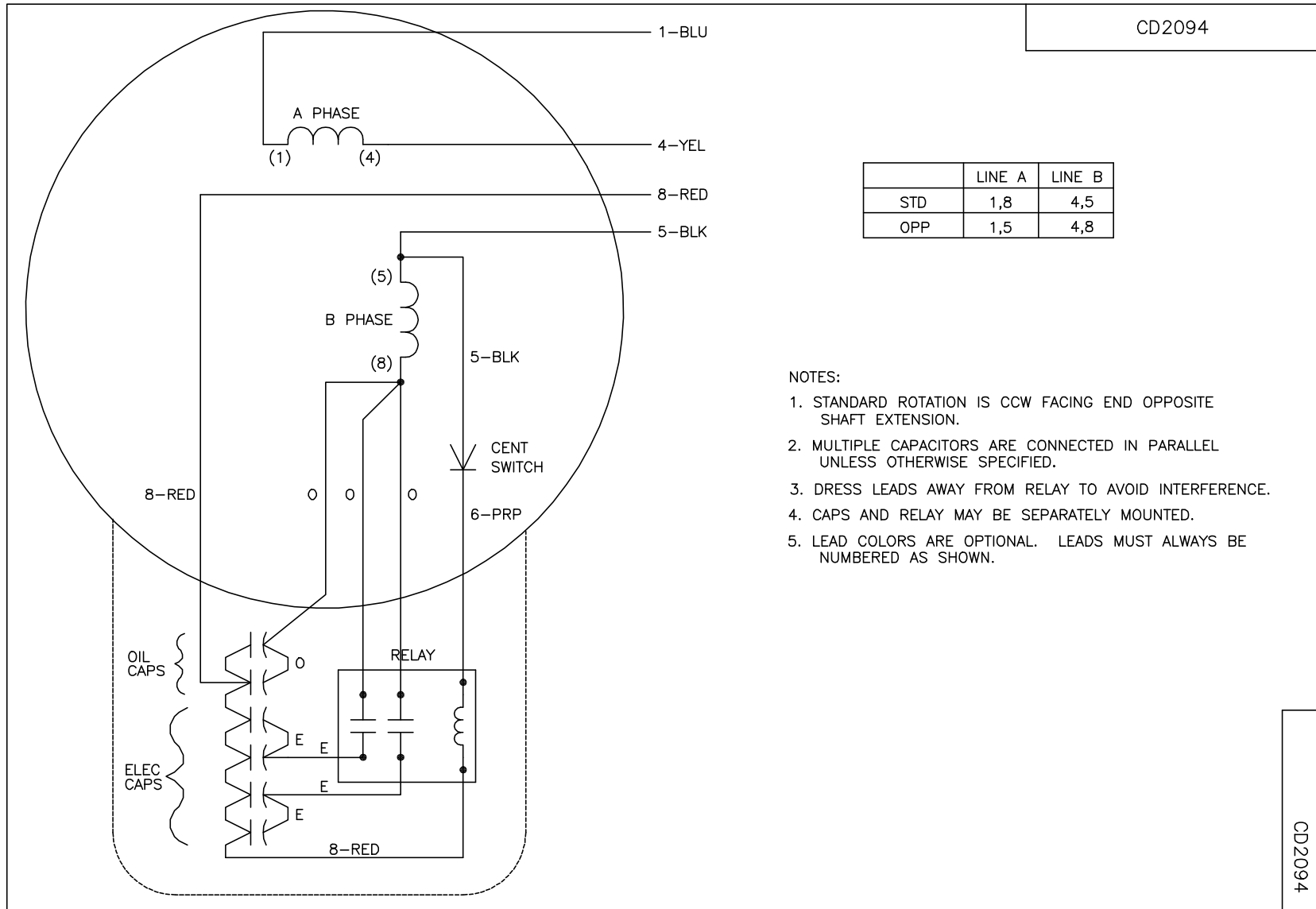


7/30/2024 ACPERF, record # 61323





CD2094



	LINE A	LINE B
STD	1,8	4,5
OPP	1,5	4,8

- NOTES:
1. STANDARD ROTATION IS CCW FACING END OPPOSITE SHAFT EXTENSION.
  2. MULTIPLE CAPACITORS ARE CONNECTED IN PARALLEL UNLESS OTHERWISE SPECIFIED.
  3. DRESS LEADS AWAY FROM RELAY TO AVOID INTERFERENCE.
  4. CAPS AND RELAY MAY BE SEPARATELY MOUNTED.
  5. LEAD COLORS ARE OPTIONAL. LEADS MUST ALWAYS BE NUMBERED AS SHOWN.

CD2094

REV. DESC: NEW		
REV. LTR: -	VERSION: 00	TDR: 000000570759
FILE: \AAA\00177\864	REVISED: 11:52:42 12/14/2010	
MTL: -	BY: ENMICWO	

**BALDOR**

TYPE LC, SV, REV, 4LD, RELAY W/CENT SWITCH  
SH 1 of 1