



Customer information packet

L1511T

10HP, 3450RPM, 1PH, 60HZ, 215T, 3740L, OPEN, F1

Class - None

Division - Not Applicable

Specifications

Enclosure	OPEN
Frame	215T
Frame Material	Steel
Frequency	60.00 Hz
Haz Area Class and Group	None
Haz Area Division	Not Applicable
Motor Letter Type	Cap Start, Induction Run
Output @ Frequency	10.000 HP @ 60 HZ
Phase	1
Synchronous Speed @ Frequency	3600 RPM @ 60 HZ
Voltage @ Frequency	230.0 V @ 60 HZ
Agency Approvals	CSA UR
Ambient Temperature	40 °C
Auxillary Box	No Auxillary Box
Auxillary Box Lead Termination	None
Base Indicator	Rigid
Bearing Grease Type	Polyrex EM (-20F +300F)
Blower	None
Current @ Voltage	48.000 A @ 208.0 V 46.000 A @ 230.0 V
Design Code	L
Drip Cover	No Drip Cover
Duty Rating	CONT
Efficiency @ 100% Load	83.0 %
Electrically Isolated Bearing	Not Electrically Isolated
Feedback Device	NO FEEDBACK
Front Face Code	Standard
Front Shaft Indicator	None
Heater Indicator	No Heater
High Voltage Full Load Amps	46.0 a
Insulation Class	F

Part detail

Revision	M
Type	AC
Mech. spec.	37K267
Base	
Status	PRD/A
Elec. spec.	37WGX047
Layout	37LYK267
Eff. date	05-13-2024
CD Diagram	CD0017A01
Poles	02
Leads	2#8 A PH,2#14 B PH
Proprietary	False
Created date	03-08-2007

Inverter Code	Not Inverter
KVA Code	G
Lifting Lugs	Standard Lifting Lugs
Locked Bearing Indicator	No Locked Bearing
Motor Lead Exit	Ko Box
Motor Lead Quantity/Wire Size	2 @ 8 AWG, A PH
Motor Lead Termination	Flying Leads
Motor Standards	NEMA
Motor Type	3740L
Mounting Arrangement	F1
Number of Poles	2
Overall Length	17.45 IN
Power Factor	86
Product Family	General Purpose
Pulley End Bearing Type	Ball
Pulley Face Code	Standard
Pulley Shaft Indicator	Standard
Rodent Screen	None
Service Factor	1.15
Shaft Diameter	1.375 IN
Shaft Extension Location	Pulley End
Shaft Ground Indicator	No Shaft Grounding
Shaft Rotation	Reversible
Shaft Slinger Indicator	No Slinger
Speed	3450 rpm
Speed Code	Single Speed
Starting Method	Direct on line
Thermal Device - Bearing	None
Thermal Device - Winding	None
Vibration Sensor Indicator	No Vibration Sensor
Winding Thermal 1	None
Winding Thermal 2	None

Nameplate

NP1256L									
CAT.NO.	L1511T								
SPEC.	37K267X047G1								
HP	10								
VOLTS	230								
AMP	46								
RPM	3450								
FRAME	215T		HZ	60		PH	1		
SER.F.	1.15	CODE	G	DES	L	CLASS	F		
NEMA-NOM-EFF	83	PF	86						
RATING	40C AMB-CONT								
CC									
DE	6307		ODE	6206					
ENCL	OPEN	SN							

Accessories

Part number	Description	Multiplier
37-1404	C FACE KIT	A8

AC Induction Motor Performance Data

Record # 11971

Typical performance - not guaranteed values

Winding: 37WGX047-R001		Type: 3740L	Enclosure: OPEN		
Nameplate Data			230 V, 60 Hz: Single Voltage Motor		
Rated Output (HP)	10	Full Load Torque	15 LB-FT		
Volts	230	Start Configuration	direct on line		
Full Load Amps	46	Breakdown Torque	46.4 LB-FT		
R.P.M.	3450	Pull-up Torque	27.6 LB-FT		
Hz	60 Phase	1	Locked-rotor Torque	30.6 LB-FT	
NEMA Design Code	L	KVA Code	G	Starting Current	280 A
Service Factor (S.F.)	1.15	No-load Current	19.3 A		
NEMA Nom. Eff.	83	Power Factor	86	Line-line Res. @ 25°C	0.163 Ω A Ph 0.728 Ω B Ph
Rating - Duty	40C	AMB-CONT	Temp. Rise @ Rated Load	100°C	
S.F. Amps			Temp. Rise @ S.F. Load	115°C	

Load Characteristics 230 V, 60 Hz, 10 HP

% of Rated Load	25	50	75	100	125	150	S.F.
Power Factor	56	72	82	86	88	87	87
Efficiency	63	79.3	81.1	83.7	82.8	80.7	83.2
Speed	3587	3570	3552	3536	3512	3482	3522
Line amperes	23.5	29	37.2	45.5	55.6	68.6	51.6

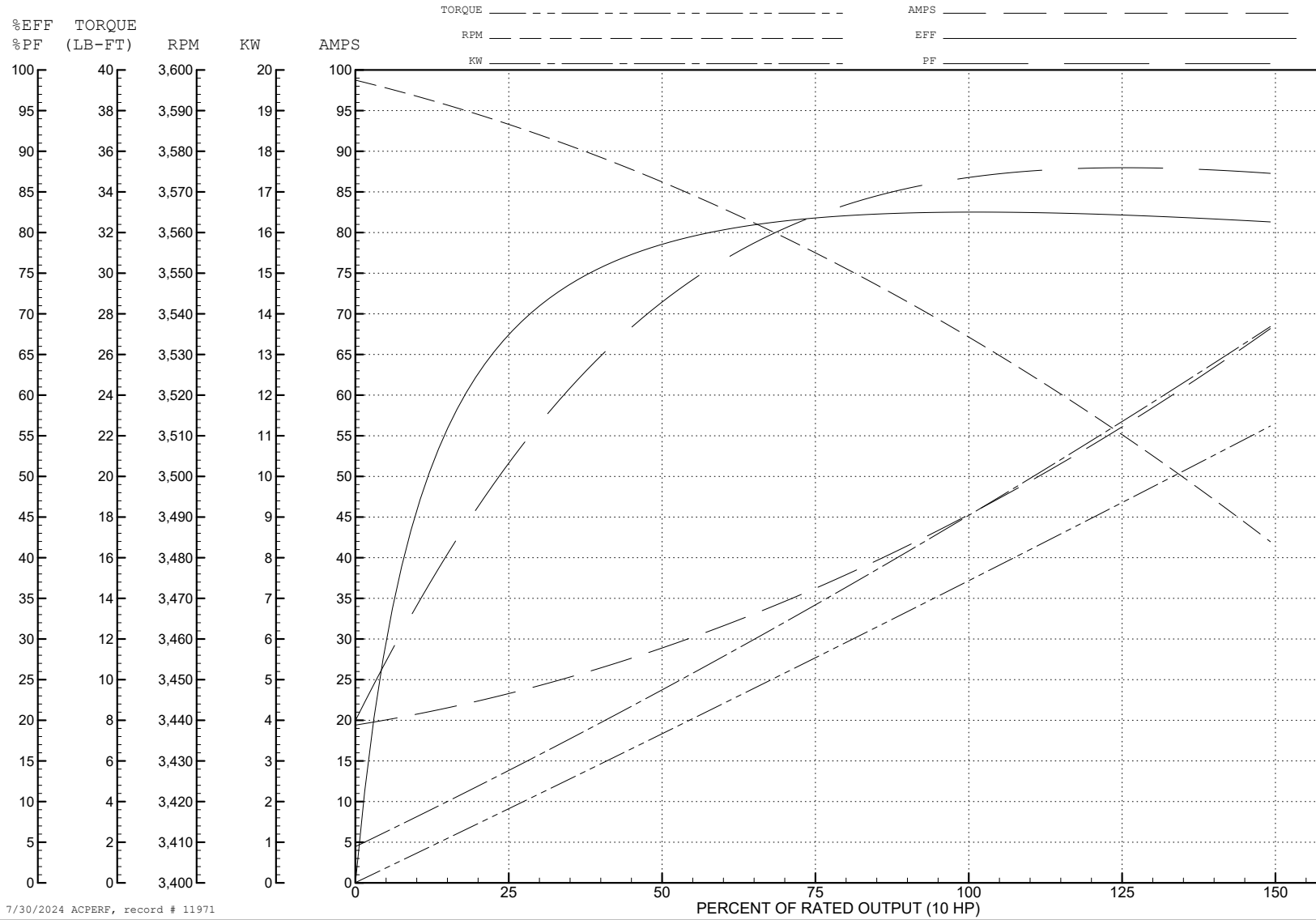
ABB Motors and Mechanical Inc.

WINDING # 37WGX047

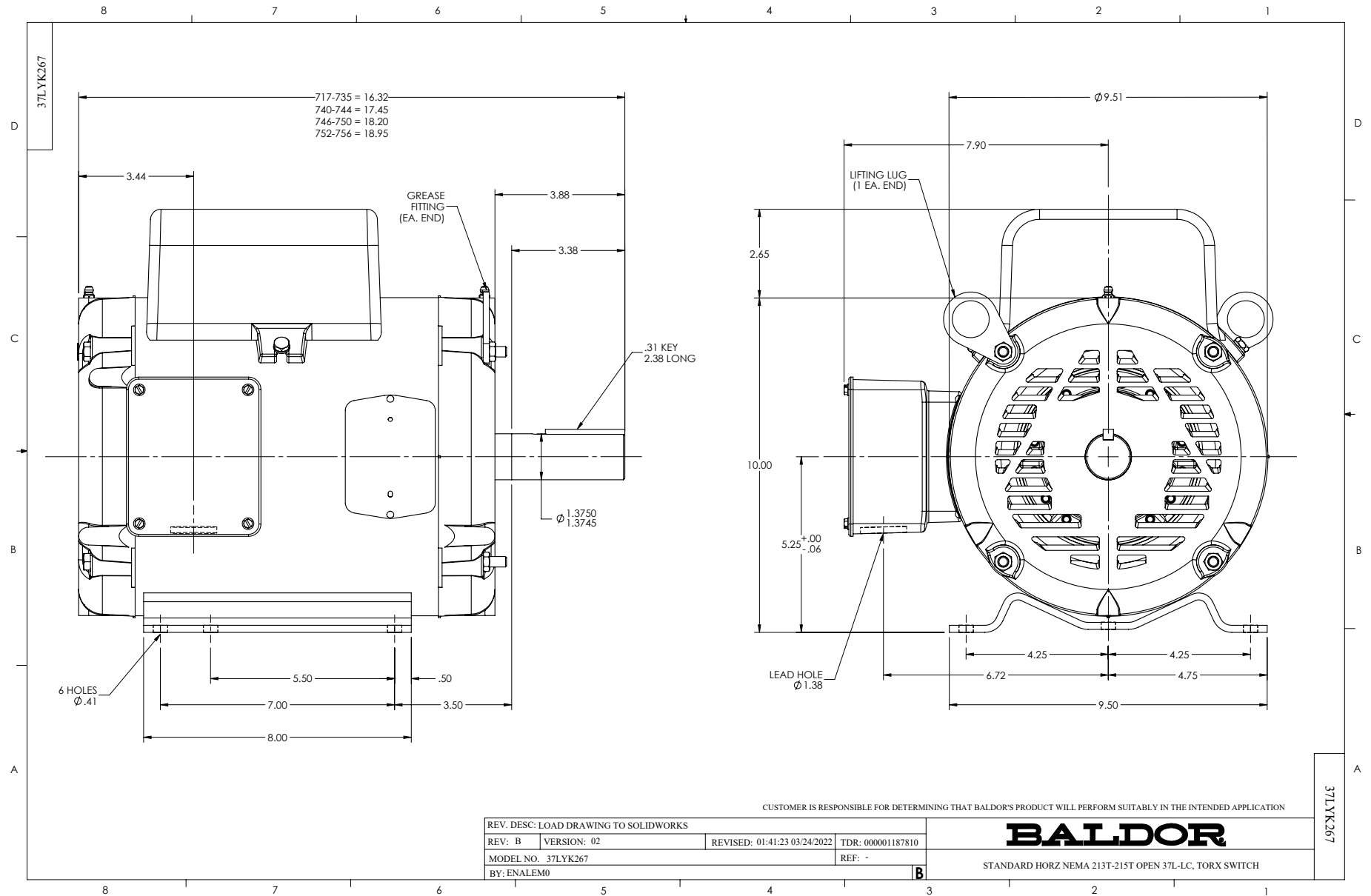
Typical performance - not guaranteed values.

10 HP 1 PH 60 HZ 3450 RPM 230 V 3740L

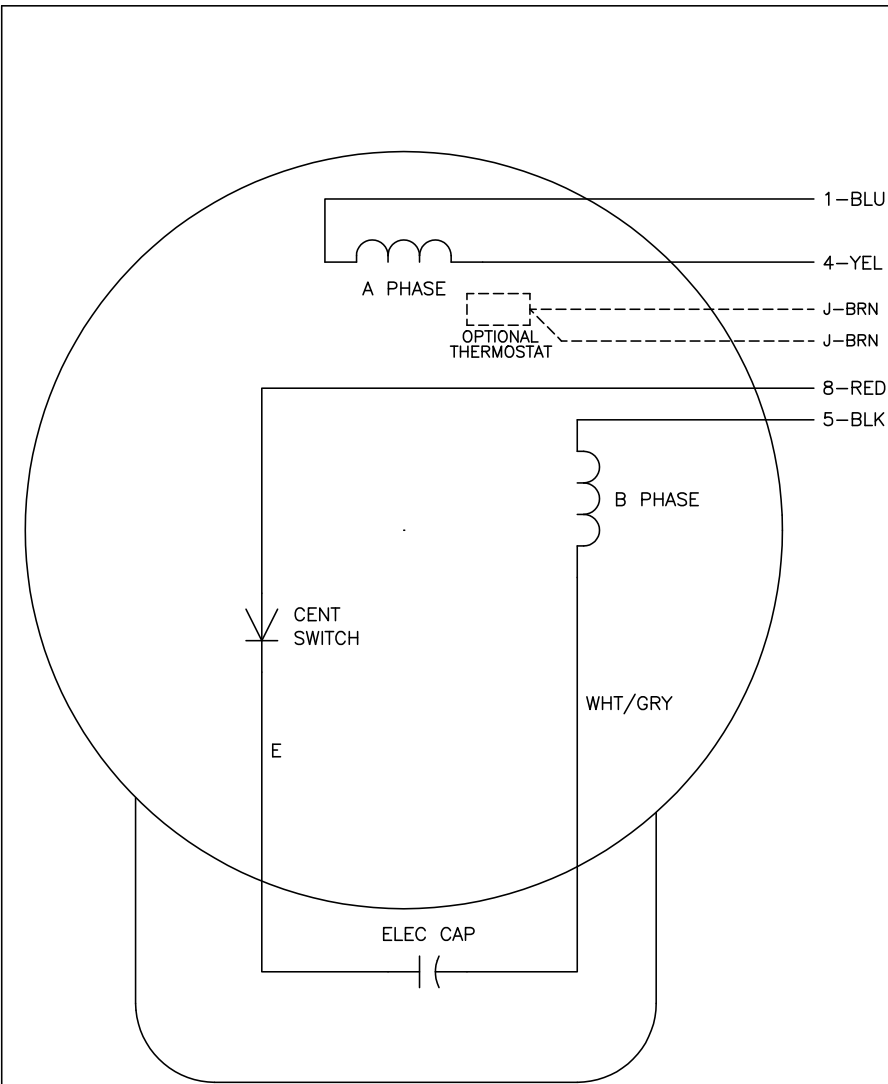
TORQUES (LB-FT): PO=46.4 PU=27.6 LR=30.6 LRA=280



7/30/2024 ACPERF, record # 11971



CD0017A01



	LINE A	LINE B
STD	1,8	4,5
OPP	1,5	4,8

NOTES:

1. STANDARD ROTATION IS CCW FACING END OPPOSITE SHAFT EXTENSION.
2. OPTIONAL THERMOSTAT IS PROVIDED WHEN SPECIFIED.
3. MULTIPLE CAPACITORS ARE CONNECTED IN PARALLEL UNLESS OTHERWISE SPECIFIED.
4. LEAD COLORS ARE OPTIONAL. LEADS MUST ALWAYS BE NUMBERED AS SHOWN.

REV. DESC: REVISE TO SHOW OPTIONAL COLORS			
REV. LTR: B	BY: JLP	REVISED: 04/08/99 1:18	TDR: 0178636
10VZ1000		FILE: AAA00007513	MDL: -
		MTL: -	

BALDOR ELECTRIC Co.

TYPE L, SV, REV, 4 LEADS

CD0017A01