

**BALDOR • RELIANCE**

---

# Customer information packet

## L1509T

7.5HP, 3450RPM, 1PH, 60HZ, 213T, 3640LC, OPEN

Class - None

Division - Not Applicable

## Specifications

Enclosure	ODTF
Frame	213T
Frame Material	Steel
Frequency	60.00 Hz
Haz Area Class and Group	None
Haz Area Division	Not Applicable
Motor Letter Type	Cap Start, Cap Run
Output @ Frequency	7.500 HP @ 60 HZ
Phase	1
Synchronous Speed @ Frequency	3600 RPM @ 60 HZ
Voltage @ Frequency	230.0 V @ 60 HZ
Agency Approvals	CSA UR
Ambient Temperature	40 °C
Auxillary Box	No Auxillary Box
Auxillary Box Lead Termination	None
Base Indicator	Rigid
Bearing Grease Type	Polyrex EM (-20F +300F)
Blower	None
Current @ Voltage	33.000 A @ 208.0 V 30.000 A @ 230.0 V
Design Code	L
Drip Cover	Drip Cover
Duty Rating	CONT
Efficiency @ 100% Load	82.5 %
Electrically Isolated Bearing	Not Electrically Isolated
Feedback Device	NO FEEDBACK
Front Face Code	Standard
Front Shaft Indicator	None
Heater Indicator	No Heater
High Voltage Full Load Amps	30.0 a
Insulation Class	F

## Part detail

Revision	Z
Type	AC
Mech. spec.	36H282
Base	
Status	PRD/A
Elec. spec.	36WGY373
Layout	36LYH282
Eff. date	05-09-2024
CD Diagram	CD0017A02
Poles	02
Leads	2#10 A PH,2#16 B PH
Proprietary	False
Created date	01-01-0001

<b>Inverter Code</b>	Not Inverter
<b>KVA Code</b>	H
<b>Lifting Lugs</b>	No Lifting Lugs
<b>Locked Bearing Indicator</b>	No Locked Bearing
<b>Motor Lead Exit</b>	Ko Box
<b>Motor Lead Quantity/Wire Size</b>	2 @ 10 AWG, A PH
<b>Motor Lead Termination</b>	Flying Leads
<b>Motor Standards</b>	NEMA
<b>Motor Type</b>	3640LC
<b>Mounting Arrangement</b>	F1
<b>Number of Poles</b>	2
<b>Overall Length</b>	18.36 IN
<b>Power Factor</b>	96
<b>Product Family</b>	General Purpose
<b>Pulley End Bearing Type</b>	Ball
<b>Pulley Face Code</b>	Standard
<b>Pulley Shaft Indicator</b>	Standard
<b>Rodent Screen</b>	None
<b>Service Factor</b>	1.15
<b>Shaft Diameter</b>	1.375 IN
<b>Shaft Extension Location</b>	Pulley End
<b>Shaft Ground Indicator</b>	No Shaft Grounding
<b>Shaft Rotation</b>	Reversible
<b>Shaft Slinger Indicator</b>	No Slinger
<b>Speed</b>	3450 rpm
<b>Speed Code</b>	Single Speed
<b>Starting Method</b>	Direct on line
<b>Thermal Device - Bearing</b>	None
<b>Thermal Device - Winding</b>	None
<b>Vibration Sensor Indicator</b>	No Vibration Sensor
<b>Winding Thermal 1</b>	None
<b>Winding Thermal 2</b>	None

**Nameplate**

<b>NP1256L</b>									
<b>CAT.NO.</b>	L1509T								
<b>SPEC.</b>	36H282Y373G2								
<b>HP</b>	7.5								
<b>VOLTS</b>	230								
<b>AMP</b>	30								
<b>RPM</b>	3450								
<b>FRAME</b>	213T		<b>HZ</b>	60		<b>PH</b>	1		
<b>SER.F.</b>	1.15	<b>CODE</b>	H	<b>DES</b>	L	<b>CLASS</b>	F		
<b>NEMA-NOM-EFF</b>	82.5	<b>PF</b>	96						
<b>RATING</b>	40C AMB-CONT								
<b>CC</b>									
<b>DE</b>	6207		<b>ODE</b>	6205					
<b>ENCL</b>	ODTF	<b>SN</b>							

**Accessories**

<b>Part number</b>	<b>Description</b>	<b>Multiplier</b>
36-1206B	C FACE KIT 213-5TC ODP	A8

**AC Induction Motor Performance Data**

Record # 23623

Typical performance - not guaranteed values

Winding: 36WGY373-R003		Type: 3640LC	Enclosure: OPAO	
<b>Nameplate Data</b>			<b>230 V, 60 Hz: Single Voltage Motor</b>	
Rated Output (HP)	7.5	Full Load Torque	11.4 LB-FT	
Volts	208-230	Start Configuration	direct on line	
Full Load Amps	33-30	Breakdown Torque	31.6 LB-FT	
R.P.M.	3450	Pull-up Torque	24.6 LB-FT	
Hz	60 Phase	1	Locked-rotor Torque	30.9 LB-FT
NEMA Design Code	L KVA Code	H	Starting Current	215 A
Service Factor (S.F.)	1.15	No-load Current	7.35 A	
NEMA Nom. Eff.	82.5 Power Factor	96	Line-line Res. @ 25°C	0.25 Ω A Ph 0.881 Ω B Ph
Rating - Duty	40C AMB-CONT	Temp. Rise @ Rated Load	60°C	
S.F. Amps		Temp. Rise @ S.F. Load	74°C	

**Load Characteristics 230 V, 60 Hz, 7.5 HP**

% of Rated Load	25	50	75	100	125	150	S.F.
Power Factor	82	92	94	96	96	96	96
Efficiency	65.8	78.7	82.9	82	80.4	77.2	81
Speed	3562	3531	3498	3458	3413	3358	3431
Line amperes	11.1	16.7	23.3	31.1	39.6	49.7	36.2

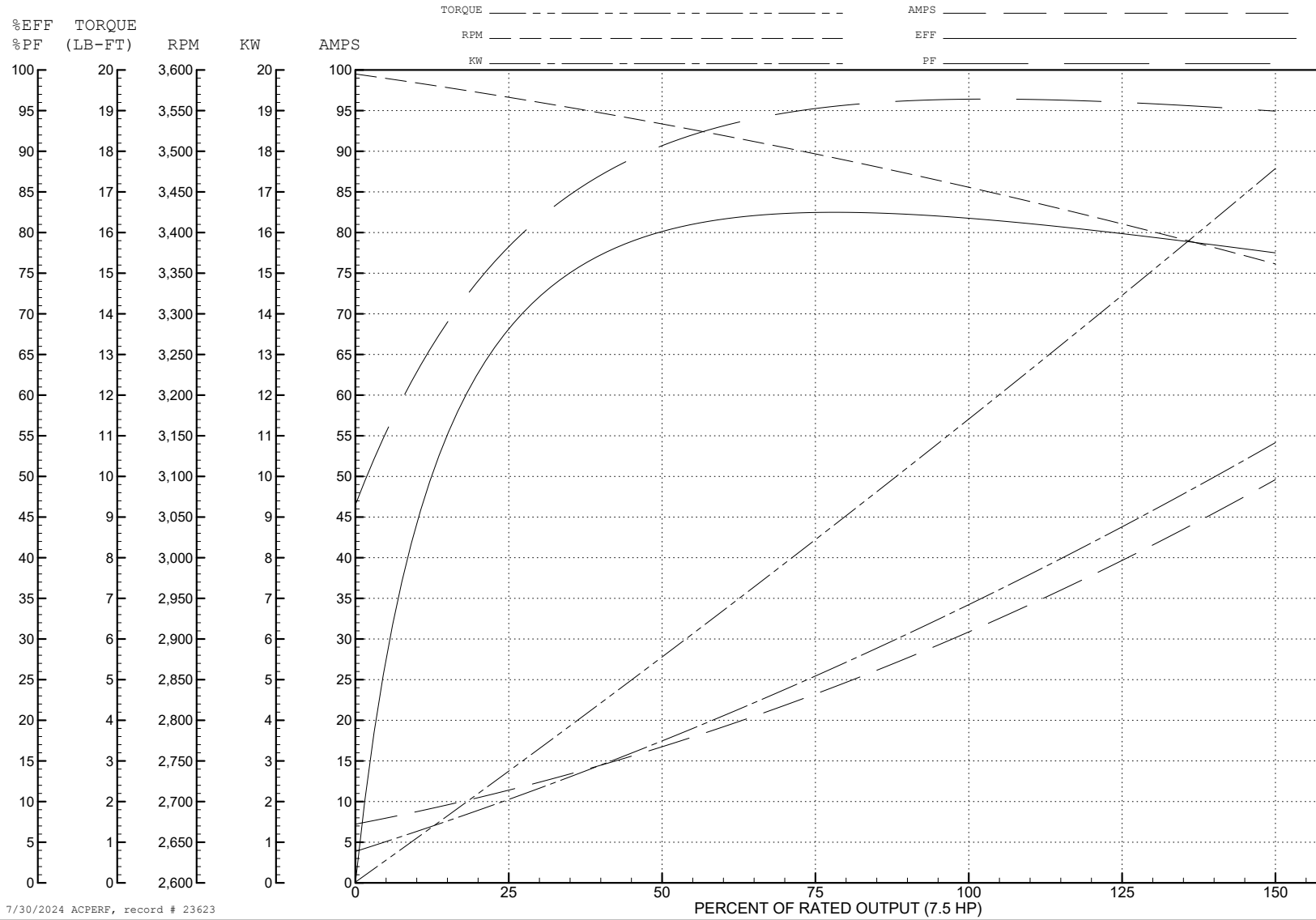
ABB Motors and Mechanical Inc.

WINDING # 36WGY373

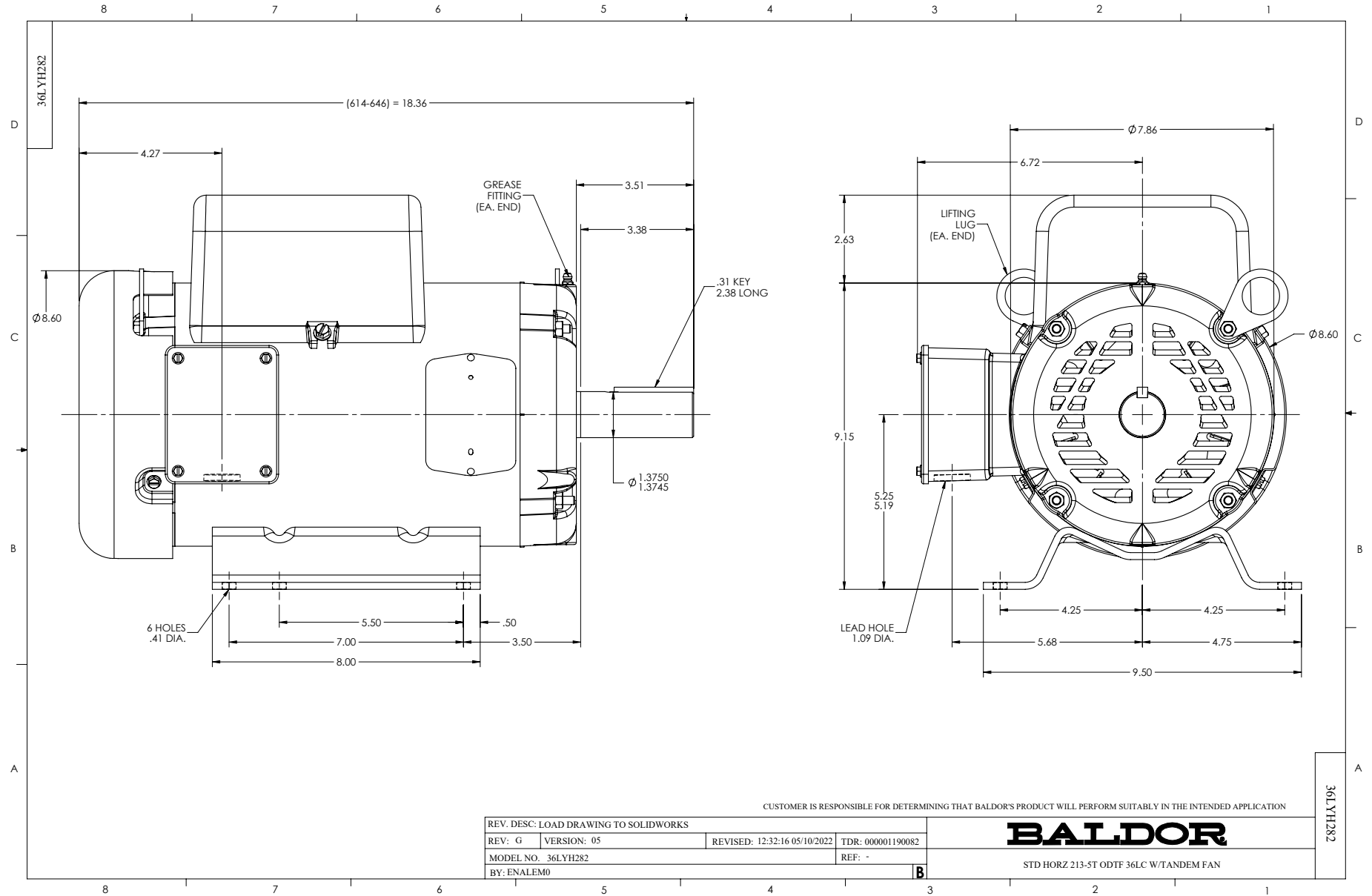
Typical performance - not guaranteed values.

7.5 HP 1 PH 60 HZ 3450 RPM 230 V 3640LC

TORQUES (LB-FT): PO=31.6 PU=24.6 LR=30.9 LRA=215

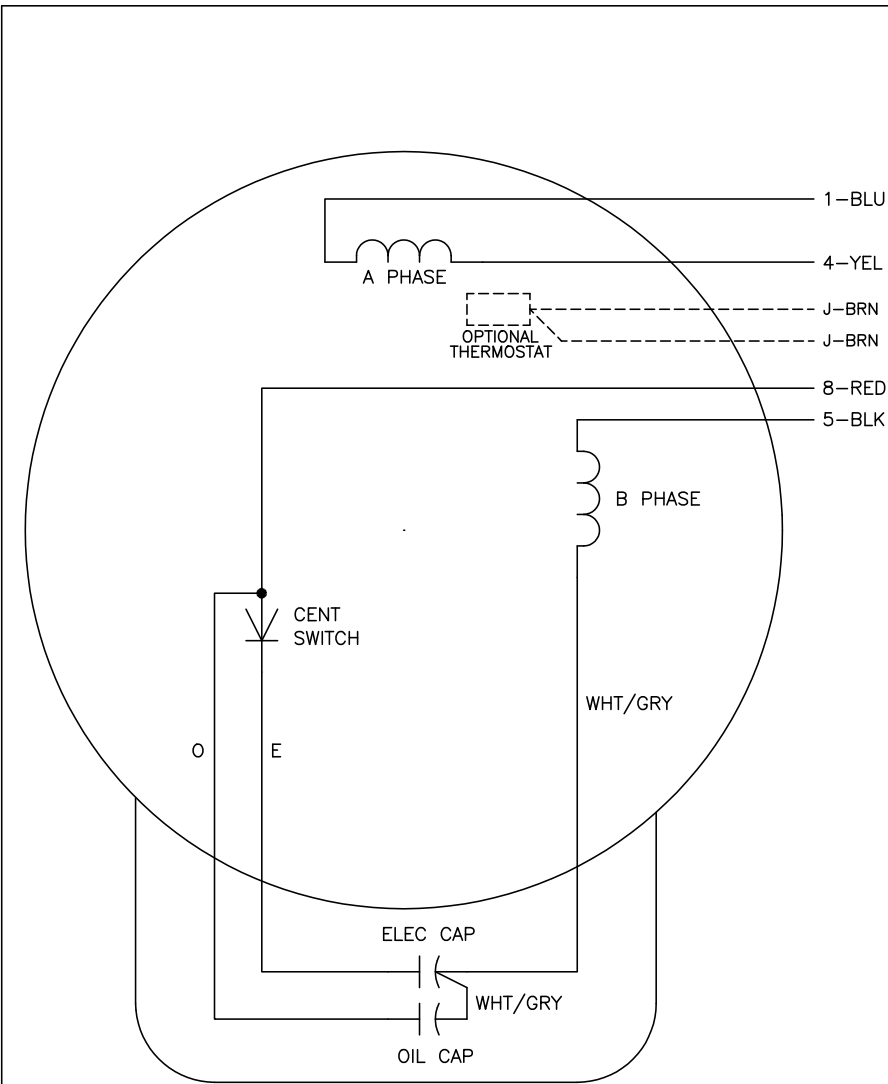


7/30/2024 ACPERF, record # 23623





CD0017A02



	LINE A	LINE B
STD	1,8	4,5
OPP	1,5	4,8

NOTES:

1. STANDARD ROTATION IS CCW FACING END OPPOSITE SHAFT EXTENSION.
2. OPTIONAL THERMOSTAT IS PROVIDED WHEN SPECIFIED.
3. MULTIPLE CAPACITORS ARE CONNECTED IN PARALLEL UNLESS OTHERWISE SPECIFIED.
4. LEAD COLORS ARE OPTIONAL. LEADS MUST ALWAYS BE NUMBERED AS SHOWN.

REV. DESC: REVISE TO SHOW OPTIONAL COLORS			
REV. LTR: B	BY: JLP	REVISED: 04/09/99 11:30	TDR: 0178636
CD0017A02		FILE: AAA00007514	MDL: -
		MTL: -	

**BALDOR ELECTRIC Co.**

TYPE LC, SV, REV, 4 LEADS

CD0017A02