



---

# Customer information packet

## L1508T

5HP, 1745RPM, 1PH, 60HZ, 213T, 3727L, OPSB, F1

Class - None

Division - Not Applicable

## Specifications

Enclosure	OPSB
Frame	213T
Frame Material	Steel
Frequency	60.00 Hz
Haz Area Class and Group	None
Haz Area Division	Not Applicable
Motor Letter Type	Cap Start, Induction Run
Output @ Frequency	5.000 HP @ 60 HZ
Phase	1
Synchronous Speed @ Frequency	1800 RPM @ 60 HZ
Voltage @ Frequency	230.0 V @ 60 HZ
Agency Approvals	UR CSA
Ambient Temperature	40 °C
Auxillary Box	No Auxillary Box
Auxillary Box Lead Termination	None
Base Indicator	Rigid
Bearing Grease Type	Polyrex EM (-20F +300F)
Blower	None
Current @ Voltage	27.000 A @ 230.0 V
Design Code	L
Drip Cover	No Drip Cover
Duty Rating	CONT
Efficiency @ 100% Load	77.0 %
Electrically Isolated Bearing	Not Electrically Isolated
Feedback Device	NO FEEDBACK
Front Face Code	Standard
Front Shaft Indicator	None
Heater Indicator	No Heater
High Voltage Full Load Amps	27.0 a
Insulation Class	F
Inverter Code	Not Inverter

## Part detail

Revision	W
Type	AC
Mech. spec.	37K214
Base	
Status	PRD/A
Elec. spec.	37WGT912
Layout	37LYK214
Eff. date	05-13-2024
CD Diagram	CD0017A01
Poles	04
Leads	2#12 A PH,2#14 B PH
Proprietary	False
Created date	03-08-2006

<b>KVA Code</b>	G
<b>Lifting Lugs</b>	Standard Lifting Lugs
<b>Locked Bearing Indicator</b>	No Locked Bearing
<b>Motor Lead Exit</b>	Ko Box
<b>Motor Lead Quantity/Wire Size</b>	2 @ 12 AWG, A PH
<b>Motor Lead Termination</b>	Flying Leads
<b>Motor Standards</b>	NEMA
<b>Motor Type</b>	3727L
<b>Mounting Arrangement</b>	F1
<b>Number of Poles</b>	4
<b>Overall Length</b>	16.32 IN
<b>Power Factor</b>	78
<b>Product Family</b>	General Purpose
<b>Pulley End Bearing Type</b>	Ball
<b>Pulley Face Code</b>	Standard
<b>Pulley Shaft Indicator</b>	Standard
<b>Rodent Screen</b>	None
<b>Service Factor</b>	1.15
<b>Shaft Diameter</b>	1.375 IN
<b>Shaft Extension Location</b>	Pulley End
<b>Shaft Ground Indicator</b>	No Shaft Grounding
<b>Shaft Rotation</b>	Reversible
<b>Shaft Slinger Indicator</b>	No Slinger
<b>Speed</b>	1725 rpm
<b>Speed Code</b>	Single Speed
<b>Starting Method</b>	Direct on line
<b>Thermal Device - Bearing</b>	None
<b>Thermal Device - Winding</b>	None
<b>Vibration Sensor Indicator</b>	No Vibration Sensor
<b>Winding Thermal 1</b>	None
<b>Winding Thermal 2</b>	None

**Nameplate**

<b>NP1256L</b>									
<b>CAT.NO.</b>	L1508T								
<b>SPEC.</b>	37K214T912								
<b>HP</b>	5								
<b>VOLTS</b>	230								
<b>AMP</b>	27								
<b>RPM</b>	1725								
<b>FRAME</b>	213T		<b>HZ</b>	60		<b>PH</b>	1		
<b>SER.F.</b>	1.15	<b>CODE</b>	G	<b>DES</b>	L	<b>CLASS</b>	F		
<b>NEMA-NOM-EFF</b>	77	<b>PF</b>	78						
<b>RATING</b>	40C AMB-CONT								
<b>CC</b>									
<b>DE</b>	6307		<b>ODE</b>	6206					
<b>ENCL</b>	OPSB	<b>SN</b>							

**Accessories**

<b>Part number</b>	<b>Description</b>	<b>Multiplier</b>
37-1404	C FACE KIT	A8

**AC Induction Motor Performance Data**

Record # 61328

Typical performance - not guaranteed values

Winding: 37WGT912-R002		Type: 3727L		Enclosure: OPSB	
<b>Nameplate Data</b>			<b>230 V, 60 Hz: Single Voltage Motor</b>		
Rated Output (HP)	5	Full Load Torque	15.3 LB-FT		
Volts	230	Start Configuration	direct on line		
Full Load Amps	27	Breakdown Torque	43 LB-FT		
R.P.M.	1725	Pull-up Torque	30.8 LB-FT		
Hz	60 Phase	1	Locked-rotor Torque	46.9 LB-FT	
NEMA Design Code	L	KVA Code	G	Starting Current	132 A
Service Factor (S.F.)	1.15		No-load Current	14.3 A	
NEMA Nom. Eff.	77	Power Factor	78	Line-line Res. @ 25°C	0.352 Ω A Ph 1.48 Ω B Ph
Rating - Duty	40C AMB-CONT		Temp. Rise @ Rated Load	68°C	
S.F. Amps			Temp. Rise @ S.F. Load	88°C	

**Load Characteristics 230 V, 60 Hz, 5 HP**

% of Rated Load	25	50	75	100	125	150	S.F.
Power Factor	38	58	71	78	81	82	80
Efficiency	71.1	79.4	78	77.1	74.1	67.1	75.3
Speed	1781	1766	1749	1728	1699	1653	1711
Line amperes	14.9	17.5	21.9	27.1	33.9	44.4	31.2

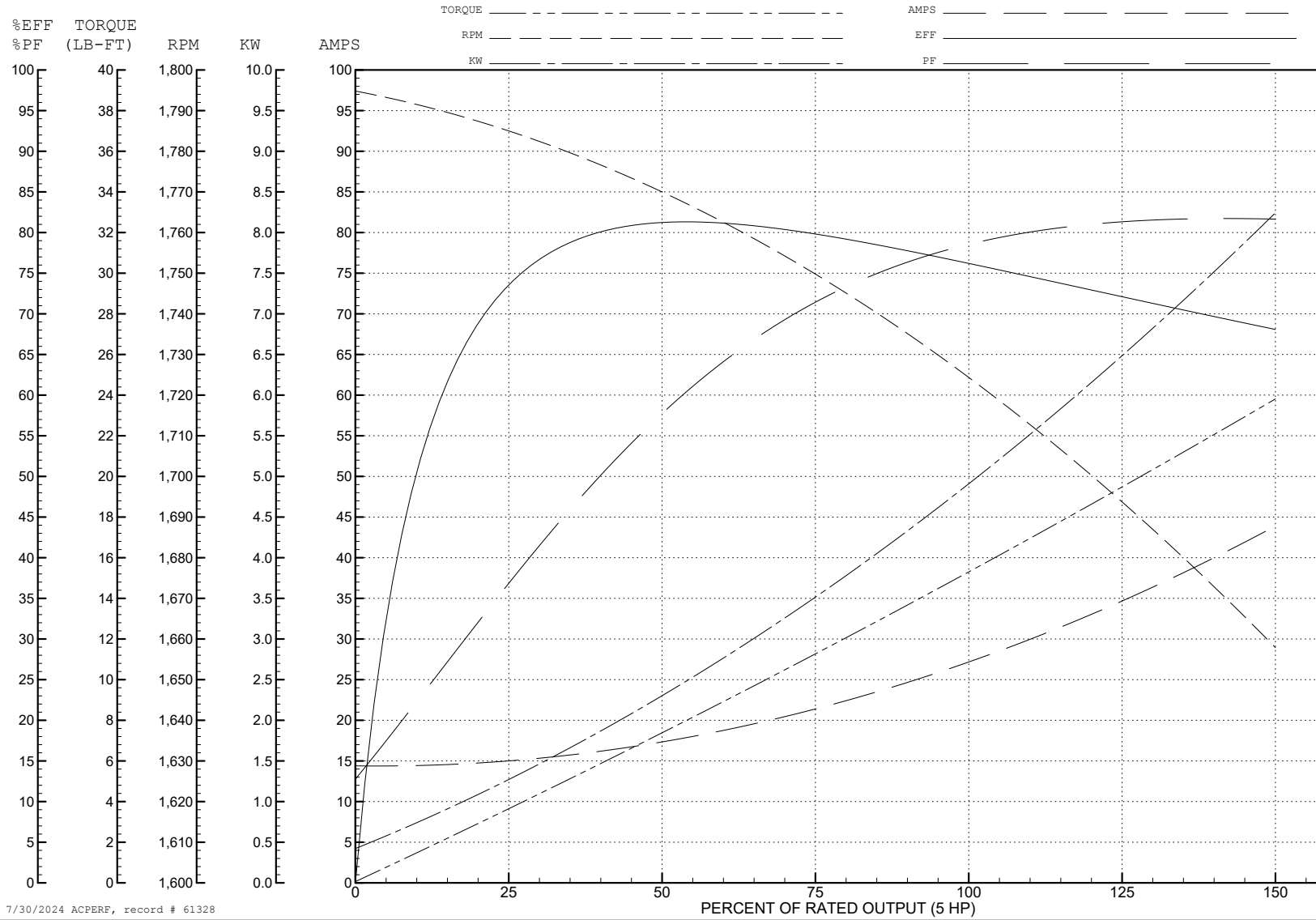
ABB Motors and Mechanical Inc.

WINDING # 37WGT912

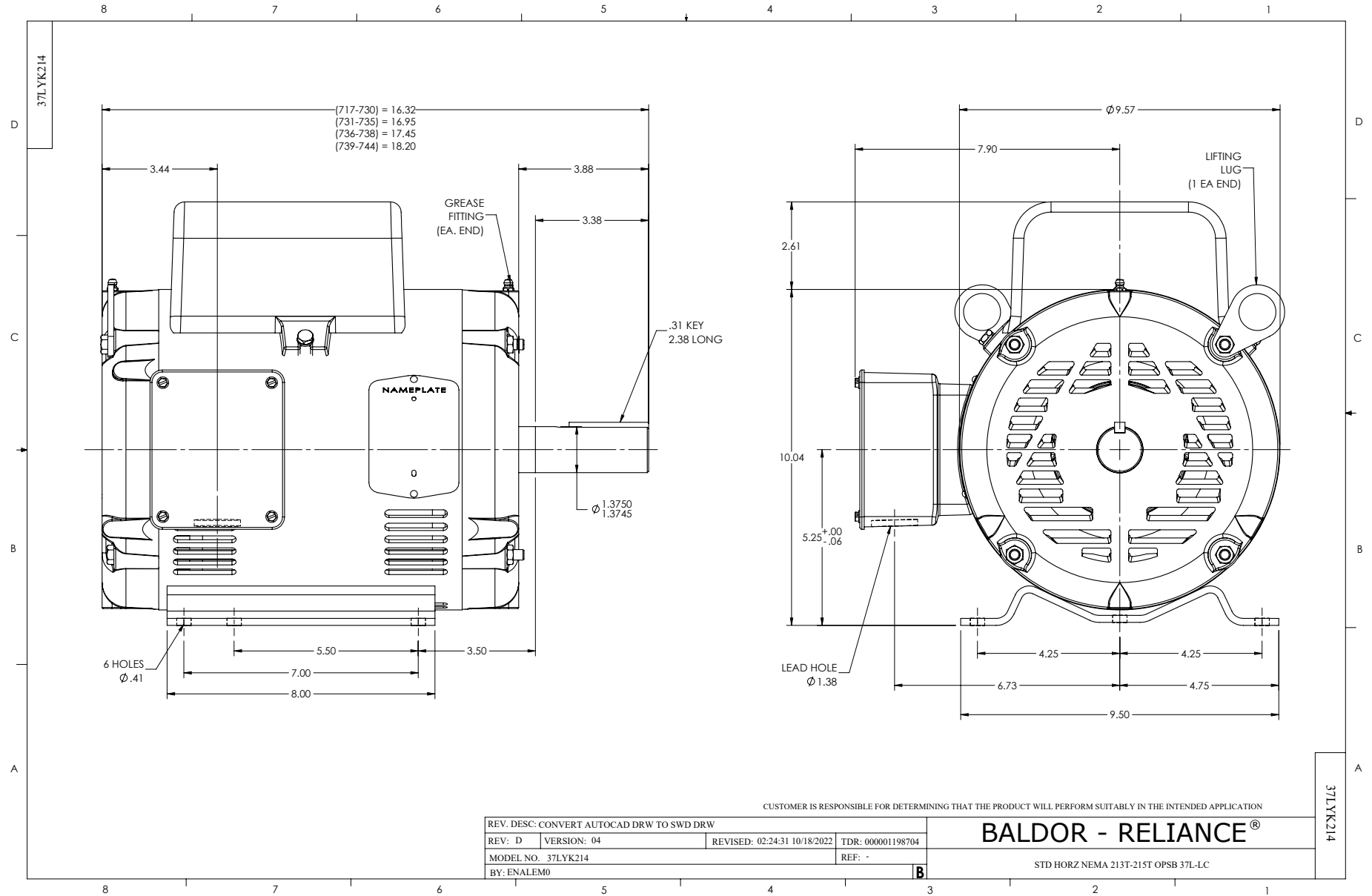
Typical performance - not guaranteed values.

5 HP 1 PH 60 HZ 1725 RPM 230 V 3727L

TORQUES (LB-FT): PO=43 PU=30.8 LR=46.9 LRA=132

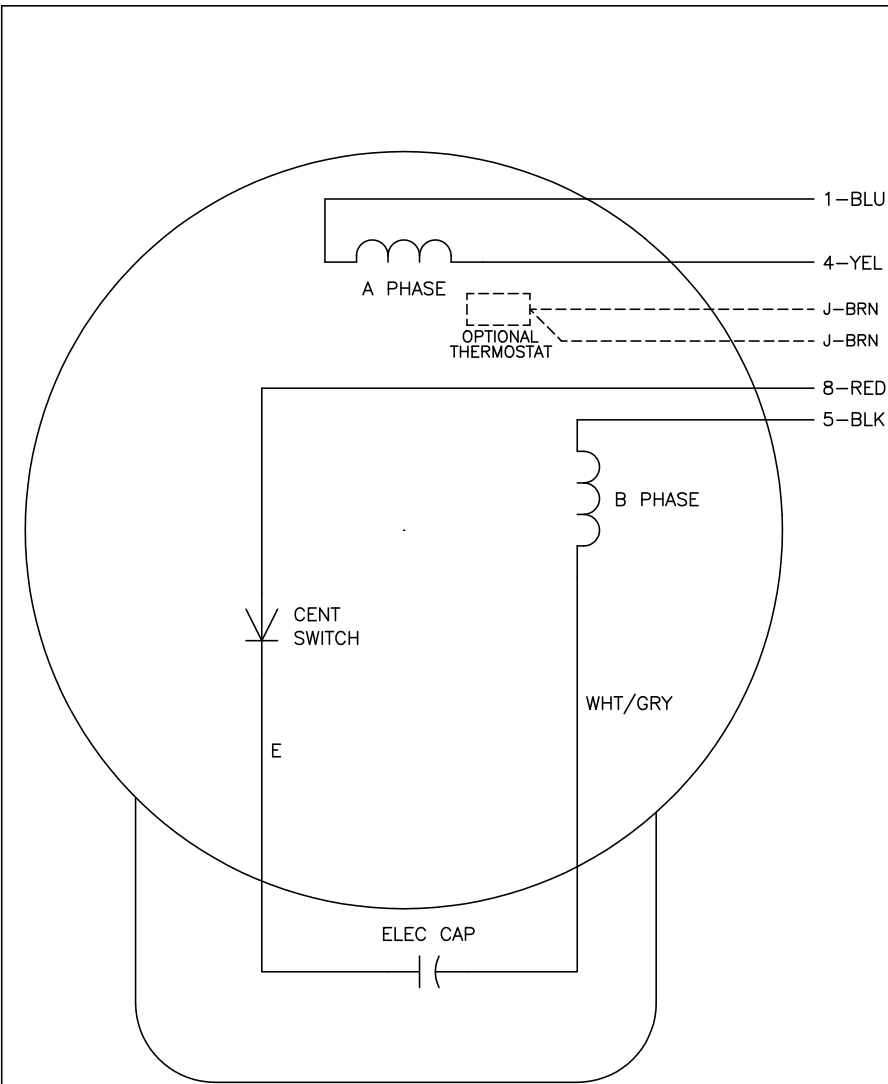


7/30/2024 ACPERF, record # 61328





CD0017A01



	LINE A	LINE B
STD	1,8	4,5
OPP	1,5	4,8

**NOTES:**

1. STANDARD ROTATION IS CCW FACING END OPPOSITE SHAFT EXTENSION.
2. OPTIONAL THERMOSTAT IS PROVIDED WHEN SPECIFIED.
3. MULTIPLE CAPACITORS ARE CONNECTED IN PARALLEL UNLESS OTHERWISE SPECIFIED.
4. LEAD COLORS ARE OPTIONAL. LEADS MUST ALWAYS BE NUMBERED AS SHOWN.

CD0017A01

REV. DESC: REVISE TO SHOW OPTIONAL COLORS			
REV. LTR: B	BY: JLP	REVISED: 04/08/99 1:18	TDR: 0178636
10VZ1000		FILE: AAA00007513	MDL: -
		MTL: -	

**BALDOR ELECTRIC Co.**

TYPE L, SV, REV, 4 LEADS