

**BALDOR • RELIANCE**

---

# Customer information packet

## L1508T-50

5/3.7KW, 1450RPM, 1PH, 50HZ, 213T, 3740LC, OPS

Class - None

Division - Not Applicable

Copyright © All product information within this document is subject to ABB Motors and Mechanical Inc. copyright © protection, unless otherwise noted.

7/30/2024 8:21:41 AM

## Specifications

Enclosure	OPSB
Frame	213T
Frame Material	Steel
Frequency	50.00 Hz
Haz Area Class and Group	None
Haz Area Division	Not Applicable
Motor Letter Type	Cap Start, Cap Run
Output @ Frequency	3.700 KW @ 50 HZ
Phase	1
Synchronous Speed @ Frequency	1500 RPM @ 50 HZ
Voltage @ Frequency	220.0 V @ 50 HZ
Agency Approvals	C UR US WEEE UKCA CURUS CE
Ambient Temperature	40 °C
Auxillary Box	No Auxillary Box
Auxillary Box Lead Termination	None
Base Indicator	Rigid
Bearing Grease Type	Polyrex EM (-20F +300F)
Blower	None
Current @ Voltage	20.400 A @ 220.0 V
Design Code	-
Drip Cover	No Drip Cover
Duty Rating	CONT
Efficiency @ 100% Load	86.3 %
Electrically Isolated Bearing	Not Electrically Isolated
Feedback Device	NO FEEDBACK
Front Shaft Indicator	None
Heater Indicator	No Heater
High Voltage Full Load Amps	20.4 a

## Part detail

Revision	C
Type	AC
Mech. spec.	37K214
Base	
Status	PRD/A
Elec. spec.	37WGQ165
Layout	37LYK214
Eff. date	05-13-2024
CD Diagram	CD0017A02
Poles	04
Leads	2#12 A PH,2#14 B PH
Proprietary	False
Created date	10-03-2023

<b>Insulation Class</b>	F
<b>Inverter Code</b>	Not Inverter
<b>KVA Code</b>	G
<b>Lifting Lugs</b>	Standard Lifting Lugs
<b>Locked Bearing Indicator</b>	No Locked Bearing
<b>Motor Lead Quantity/Wire Size</b>	2 @ 12 AWG, A PH
<b>Motor Lead Termination</b>	Flying Leads
<b>Motor Standards</b>	NEMA
<b>Motor Type</b>	3740LC
<b>Mounting Arrangement</b>	F1
<b>Number of Poles</b>	4
<b>Overall Length</b>	18.20 IN
<b>Power Factor</b>	96
<b>Product Family</b>	General Purpose
<b>Pulley End Bearing Type</b>	Ball
<b>Pulley Face Code</b>	Standard
<b>Pulley Shaft Indicator</b>	Standard
<b>Rodent Screen</b>	None
<b>RoHS Status</b>	ROHS COMPLIANT
<b>Service Factor</b>	1.00
<b>Shaft Diameter</b>	1.375 IN
<b>Shaft Ground Indicator</b>	No Shaft Grounding
<b>Shaft Rotation</b>	Reversible
<b>Shaft Slinger Indicator</b>	No Slinger
<b>Speed</b>	1450 rpm
<b>Speed Code</b>	Single Speed
<b>Starting Method</b>	Direct on line
<b>Thermal Device - Bearing</b>	None
<b>Thermal Device - Winding</b>	None
<b>Vibration Sensor Indicator</b>	No Vibration Sensor
<b>Winding Thermal 1</b>	None
<b>Winding Thermal 2</b>	None

**Nameplate**

<b>NP1372L</b>	
<b>CAT.NO.</b>	L1508T-50
<b>SPEC.</b>	37K214Q165
<b>HP</b>	5/3.7KW
<b>VOLTS</b>	220
<b>AMP</b>	20.4
<b>R.P.M. (1/MIN)</b>	1450
<b>FRAME</b>	213T <b>HZ</b> 50 <b>PH</b> 1
<b>SER.F.</b>	1.00 <b>CODE</b> G <b>DES</b> - <b>CL</b> F
<b>NEMA-NOM-EFF</b>	86.3 <b>PF</b> 96
<b>RATING</b>	40C AMB-S1 CONT
<b>CC</b>	IP23 IC01 15KG
<b>DE</b>	6307 <b>ODE</b> 6206
<b>ENCL</b>	OPSB <b>SN</b>
	IE2-50HZ 86(75%),83(50%)

**Accessories**

<b>Part number</b>	<b>Description</b>	<b>Multiplier</b>
37-1404	C FACE KIT	A8

**AC Induction Motor Performance Data**

Record # 101595

Typical performance - not guaranteed values

Winding: 37WGQ165-R001		Type: 3740LC		Enclosure: OPEN	
<b>Nameplate Data</b>			<b>220 V, 50 Hz: Single Voltage Motor</b>		
Rated Output (KW)	3.7	Full Load Torque	17.82 LB-FT		
Volts	220	Start Configuration	direct on line		
Full Load Amps	20.4	Breakdown Torque	53.5 LB-FT		
R.P.M.	1450	Pull-up Torque	26.2 LB-FT		
Hz	50 Phase	1	Locked-rotor Torque	37.7 LB-FT	
NEMA Design Code	- KVA Code	-	Starting Current	136 A	
Service Factor (S.F.)		1	No-load Current	4.77 A	
NEMA Nom. Eff.	86.3 Power Factor	96	Line-line Res. @ 25°C	0.39132 Ω A Ph 1.2312 Ω B Ph	
Rating - Duty		40C AMB-CONT	Temp. Rise @ Rated Load	73°C	

**Load Characteristics 220 V, 50 Hz, 3.7 KW**

% of Rated Load	25	50	75	100	125	150
Power Factor	82	91	94	95	95	95
Efficiency	72.8	83.8	86.7	86.8	85.2	82.5
Speed	1491.2	1482.5	1473	1462.2	1449.2	1433.2
Line amperes	7.01	11	15.4	20.3	25.9	32.2

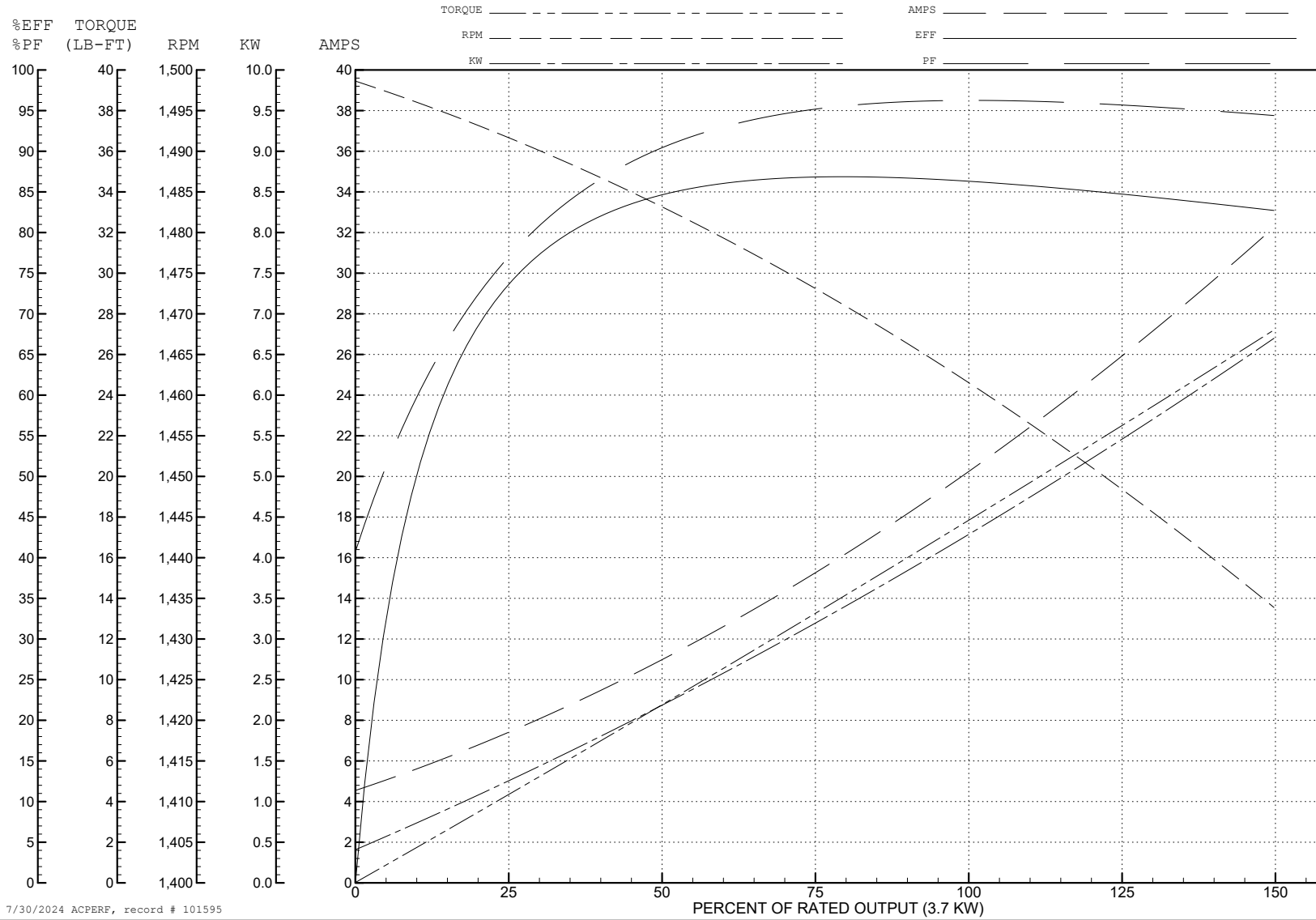
ABB Motors and Mechanical Inc.

WINDING # 37WGQ165

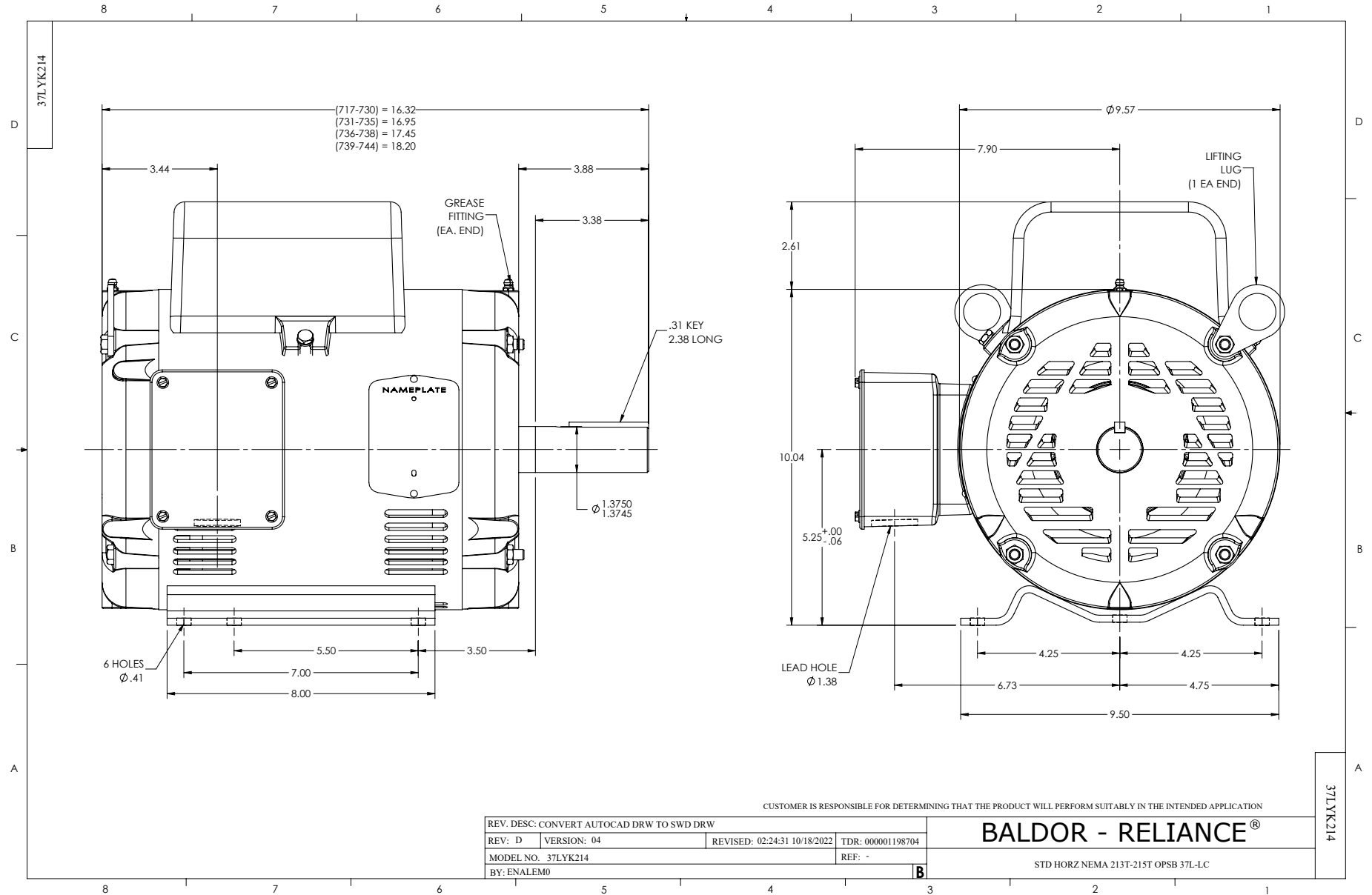
3.7 KW 1 PH 50 HZ 1450 RPM 220 V 3740LC

Typical performance - not guaranteed values.

TORQUES (LB-FT): PO=53.5 PU=26.2 LR=37.7 LRA=136

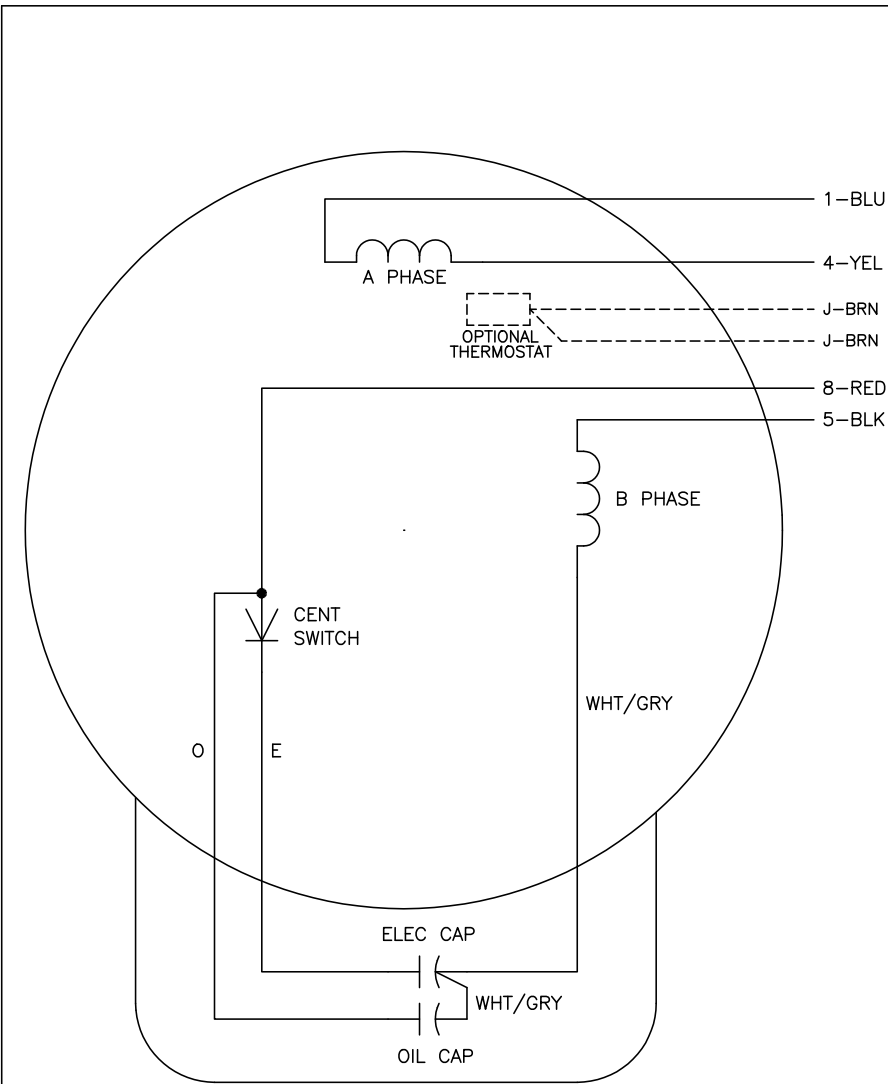


7/30/2024 ACPERF, record # 101595





CD0017A02



	LINE A	LINE B
STD	1,8	4,5
OPP	1,5	4,8

**NOTES:**

1. STANDARD ROTATION IS CCW FACING END OPPOSITE SHAFT EXTENSION.
2. OPTIONAL THERMOSTAT IS PROVIDED WHEN SPECIFIED.
3. MULTIPLE CAPACITORS ARE CONNECTED IN PARALLEL UNLESS OTHERWISE SPECIFIED.
4. LEAD COLORS ARE OPTIONAL. LEADS MUST ALWAYS BE NUMBERED AS SHOWN.

CD0017A02

REV. DESC: REVISE TO SHOW OPTIONAL COLORS			
REV. LTR: B	BY: JLP	REVISED: 04/09/99 11:30	TDR: 0178636
CD0017A02		FILE: AAA00007514	MDL: -
		MTL: -	

**BALDOR ELECTRIC Co.**

TYPE LC, SV, REV, 4 LEADS