

BALDOR • RELIANCE

Customer information packet

L1430TM

5HP, 1725RPM, 1PH, 60HZ, 184T, 3634LC, ODTF

Class - None

Division - Not Applicable

Specifications

| | |
|--------------------------------|--|
| Enclosure | ODTF |
| Frame | 184T |
| Frame Material | Steel |
| Frequency | 60.00 Hz |
| Haz Area Class and Group | None |
| Haz Area Division | Not Applicable |
| Motor Letter Type | Cap Start, Cap Run |
| Output @ Frequency | 5.000 HP @ 60 HZ |
| Phase | 1 |
| Synchronous Speed @ Frequency | 1800 RPM @ 60 HZ |
| Voltage @ Frequency | 230.0 V @ 60 HZ |
| Agency Approvals | UR CSA |
| Ambient Temperature | 40 °C |
| Auxillary Box | No Auxillary Box |
| Auxillary Box Lead Termination | None |
| Base Indicator | Rigid |
| Bearing Grease Type | Polyrex EM (-20F +300F) |
| Blower | None |
| Current @ Voltage | 24.000 A @ 230.0 V 25.500 A @ 208.0 V |
| Design Code | L |
| Drip Cover | Drip Cover |
| Duty Rating | CONT |
| Efficiency @ 100% Load | 80.0 % |
| Electrically Isolated Bearing | Not Electrically Isolated |
| Feedback Device | NO FEEDBACK |
| Front Face Code | Standard |
| Front Shaft Indicator | None |
| Heater Indicator | No Heater |
| High Voltage Full Load Amps | 24.0 a |
| Insulation Class | F |

Part detail

| | |
|--------------|--------------------|
| Revision | X |
| Type | AC |
| Mech. spec. | 36K761 |
| Base | |
| Status | PRD/A |
| Elec. spec. | 36WGX262 |
| Layout | 36LYK761 |
| Eff. date | 05-10-2024 |
| CD Diagram | CD0002A02 |
| Poles | 04 |
| Leads | 2#10 A PH,3#16 B&J |
| Proprietary | False |
| Created date | 01-01-0001 |

| | |
|--------------------------------------|-------------------------|
| Inverter Code | Not Inverter |
| KVA Code | H |
| Lifting Lugs | No Lifting Lugs |
| Locked Bearing Indicator | No Locked Bearing |
| Motor Lead Exit | Ko Box |
| Motor Lead Quantity/Wire Size | 2 @ 10 AWG, A PH |
| Motor Lead Termination | Flying Leads |
| Motor Standards | NEMA |
| Motor Type | 3634LC |
| Mounting Arrangement | F1 |
| Number of Poles | 4 |
| Overall Length | 16.55 IN |
| Power Factor | 86 |
| Product Family | General Purpose |
| Pulley End Bearing Type | Ball |
| Pulley Face Code | Standard |
| Pulley Shaft Indicator | Standard |
| Rodent Screen | None |
| Service Factor | 1.15 |
| Shaft Diameter | 1.125 IN |
| Shaft Extension Location | Pulley End |
| Shaft Ground Indicator | No Shaft Grounding |
| Shaft Rotation | Reversible |
| Shaft Slinger Indicator | No Slinger |
| Speed | 1725 rpm |
| Speed Code | Single Speed |
| Starting Method | Direct on line |
| Thermal Device - Bearing | None |
| Thermal Device - Winding | Do Not Use |
| Vibration Sensor Indicator | No Vibration Sensor |
| Winding Thermal 1 | Manual Thermal Overload |
| Winding Thermal 1 Location | KO |
| Winding Thermal 2 | None |

Nameplate

| NP1257L | | | | | | | | | |
|---------------------|--------------|-------------|-----------|------------|---|-----------|---|--|--|
| CAT.NO. | L1430TM | | | | | | | | |
| SPEC. | 36K761X262G1 | | | | | | | | |
| HP | 5 | | | | | | | | |
| VOLTS | 230 | | | | | | | | |
| AMP | 24 | | | | | | | | |
| RPM | 1725 | | | | | | | | |
| FRAME | 184T | | HZ | 60 | | PH | 1 | | |
| SER.F. | 1.15 | CODE | H | DES | L | CL | F | | |
| NEMA-NOM-EFF | 80 | PF | 86 | | | | | | |
| RATING | 40C AMB-CONT | | | | | | | | |
| CC | | | | | | | | | |
| DE | 6206 | ODE | 6205 | | | | | | |
| ENCL | ODTF | SN | | | | | | | |

Accessories

| Part number | Description | Multiplier |
|--------------------|--------------------|-------------------|
| 36-3403 | C FACE KIT | A8 |
| 36EP1405A09SP | D-FLANGE KIT | |

AC Induction Motor Performance Data

Record # 20866

Typical performance - not guaranteed values

| Winding: 36WGX262-R003 | | Type: 3634LC | Enclosure: ODTF | | |
|------------------------|----------|---------------------|---|-----------------------|-----------------------------|
| Nameplate Data | | | 230 V, 60 Hz: Single Voltage Motor | | |
| Rated Output (HP) | 5 | Full Load Torque | 15.2 LB-FT | | |
| Volts | 230 | Start Configuration | direct on line | | |
| Full Load Amps | 24 | Breakdown Torque | 35 LB-FT | | |
| R.P.M. | 1725 | Pull-up Torque | 29 LB-FT | | |
| Hz | 60 Phase | 1 | Locked-rotor Torque | 36 LB-FT | |
| NEMA Design Code | L | KVA Code | H | Starting Current | 137 A |
| Service Factor (S.F.) | 1.15 | No-load Current | 8.2 A | | |
| NEMA Nom. Eff. | 80 | Power Factor | 86 | Line-line Res. @ 25°C | 0.494 Ω A Ph 1.73 Ω B Ph |
| Rating - Duty | 40C | AMB-CONT | Temp. Rise @ Rated Load | 84°C | |
| S.F. Amps | | | Temp. Rise @ S.F. Load | 102°C | |

Load Characteristics 230 V, 60 Hz, 5 HP

| % of Rated Load | 25 | 50 | 75 | 100 | 125 | 150 | S.F. |
|-----------------|------|------|------|------|------|------|------|
| Power Factor | 63 | 79 | 87 | 90 | 91 | 90 | 0 |
| Efficiency | 63.7 | 76.5 | 80.3 | 80.6 | 78.7 | 74.5 | 0 |
| Speed | 1784 | 1768 | 1751 | 1730 | 1704 | 1667 | 0 |
| Line amperes | 10.1 | 13.4 | 17.5 | 22.5 | 28.5 | 36.3 | 26.1 |

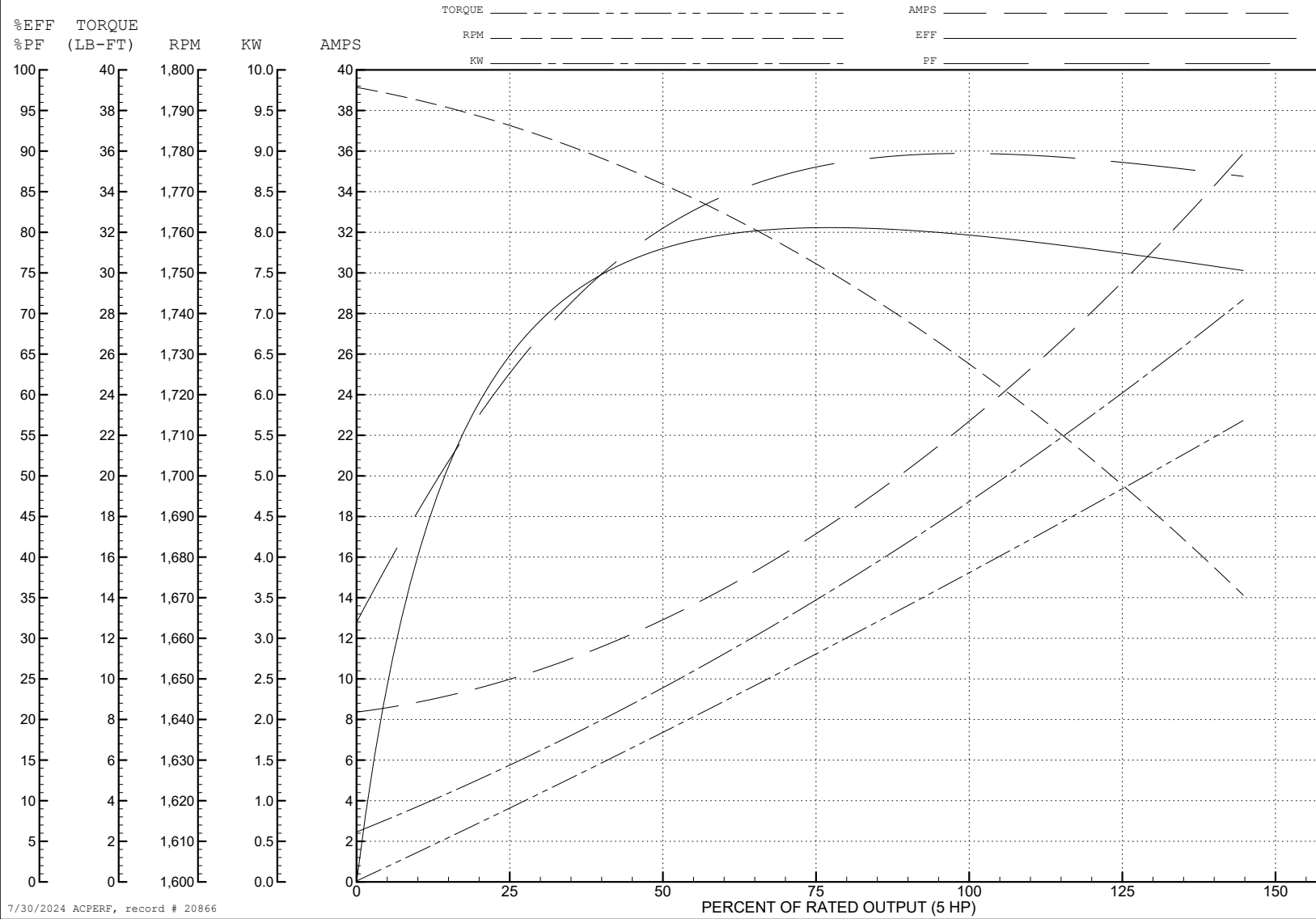
ABB Motors and Mechanical Inc.

WINDING # 36WX262

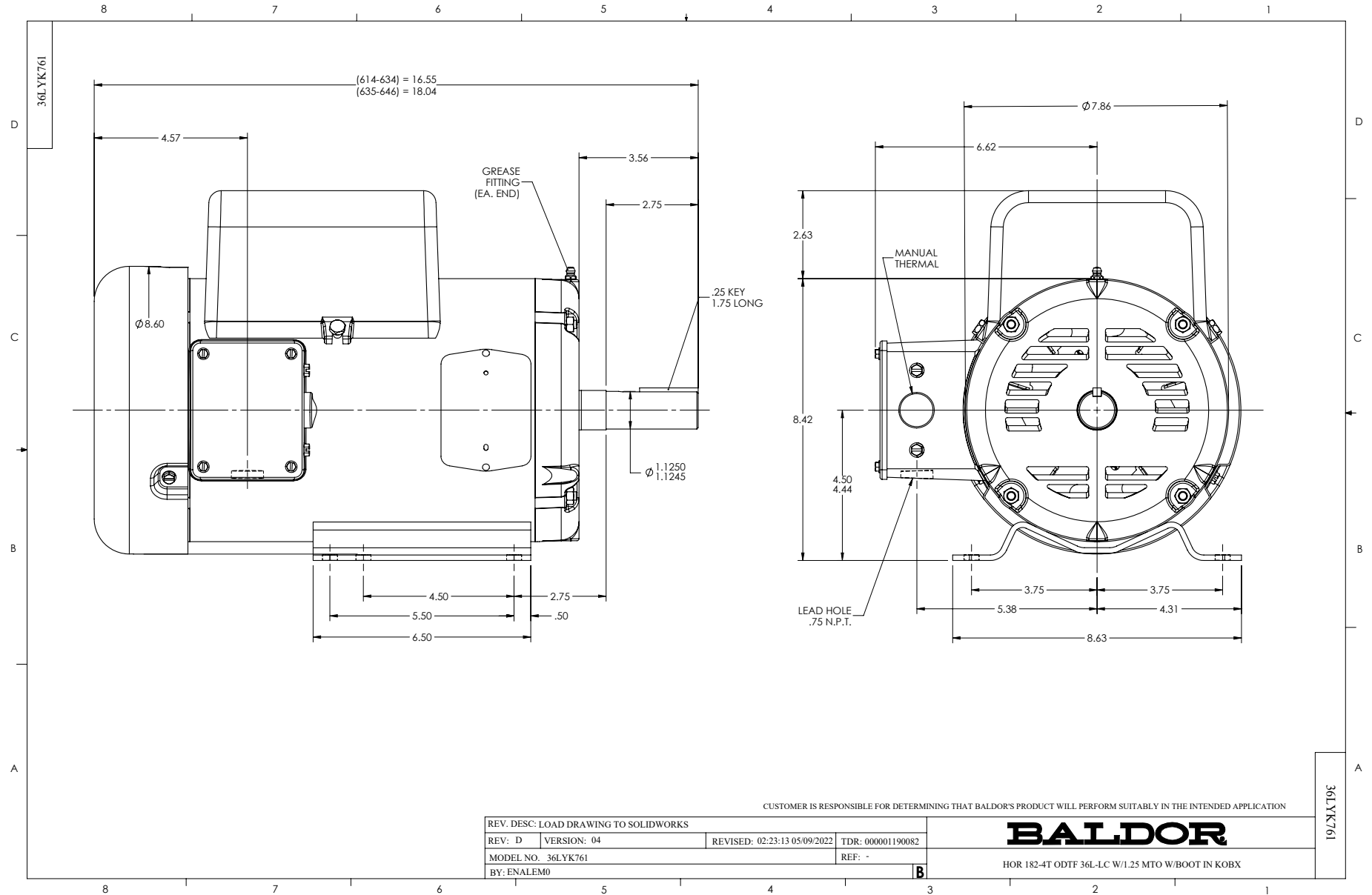
Typical performance - not guaranteed values.

5 HP 1 PH 60 HZ 1725 RPM 230 V 3634LC

TORQUES (LB-FT): PO=35 PU=29 LR=36 LRA=137



7/30/2024 ACPERF, record # 20866



CD0002A02

