



---

# Customer information packet

## L1410T

5HP, 1725RPM, 1PH, 60HZ, 184T, 3640LC, OPEN, F1

Class - None

Division - Not Applicable

## Specifications

Enclosure	OPEN
Frame	184T
Frame Material	Steel
Frequency	60.00 Hz
Haz Area Class and Group	None
Haz Area Division	Not Applicable
Motor Letter Type	Cap Start, Cap Run
Output @ Frequency	5.000 HP @ 60 HZ
Phase	1
Synchronous Speed @ Frequency	1800 RPM @ 60 HZ
Voltage @ Frequency	230.0 V @ 60 HZ
Agency Approvals	CSA UR
Ambient Temperature	40 °C
Auxillary Box	No Auxillary Box
Auxillary Box Lead Termination	None
Base Indicator	Rigid
Bearing Grease Type	Polyrex EM (-20F +300F)
Blower	None
Current @ Voltage	21.000 A @ 230.0 V 23.000 A @ 208.0 V
Design Code	L
Drip Cover	No Drip Cover
Duty Rating	CONT
Efficiency @ 100% Load	82.5 %
Electrically Isolated Bearing	Not Electrically Isolated
Feedback Device	NO FEEDBACK
Front Shaft Indicator	None
Heater Indicator	No Heater
High Voltage Full Load Amps	21.0 a
Insulation Class	F
Inverter Code	Not Inverter

## Part detail

Revision	C
Type	AC
Mech. spec.	36M925
Base	
Status	PRD/A
Elec. spec.	36WGQ041
Layout	36LYM925
Eff. date	05-10-2024
CD Diagram	CD0017A02
Poles	04
Leads	2#10 A PH,2#16 B PH
Proprietary	False
Created date	12-14-2020

<b>KVA Code</b>	G
<b>Lifting Lugs</b>	No Lifting Lugs
<b>Locked Bearing Indicator</b>	No Locked Bearing
<b>Motor Lead Quantity/Wire Size</b>	2 @ 10 AWG, A PH
<b>Motor Lead Termination</b>	Flying Leads
<b>Motor Standards</b>	NEMA
<b>Motor Type</b>	3640LC
<b>Mounting Arrangement</b>	F1
<b>Number of Poles</b>	4
<b>Overall Length</b>	16.49 IN
<b>Power Factor</b>	95
<b>Product Family</b>	General Purpose
<b>Pulley End Bearing Type</b>	Ball
<b>Pulley Face Code</b>	Standard
<b>Pulley Shaft Indicator</b>	Standard
<b>Rodent Screen</b>	None
<b>Service Factor</b>	1.15
<b>Shaft Diameter</b>	1.125 IN
<b>Shaft Ground Indicator</b>	No Shaft Grounding
<b>Shaft Rotation</b>	Reversible
<b>Shaft Slinger Indicator</b>	No Slinger
<b>Speed</b>	1725 rpm
<b>Speed Code</b>	Single Speed
<b>Starting Method</b>	Direct on line
<b>Thermal Device - Bearing</b>	None
<b>Thermal Device - Winding</b>	None
<b>Vibration Sensor Indicator</b>	No Vibration Sensor
<b>Winding Thermal 1</b>	None
<b>Winding Thermal 2</b>	None

**Nameplate**

<b>NP1256L</b>									
<b>CAT.NO.</b>	L1410T								
<b>SPEC.</b>	36M925Q041G1								
<b>HP</b>	5								
<b>VOLTS</b>	230								
<b>AMP</b>	21								
<b>RPM</b>	1725								
<b>FRAME</b>	184T		<b>HZ</b>	60		<b>PH</b>	1		
<b>SER.F.</b>	1.15	<b>CODE</b>	G	<b>DES</b>	L	<b>CLASS</b>	F		
<b>NEMA-NOM-EFF</b>	82.5	<b>PF</b>	95						
<b>RATING</b>	40C AMB-CONT								
<b>CC</b>									
<b>DE</b>	6206		<b>ODE</b>	6205					
<b>ENCL</b>	OPEN	<b>SN</b>							

**Accessories**

<b>Part number</b>	<b>Description</b>	<b>Multiplier</b>
36-3403	C FACE KIT	A8
36EP1405A09SP	D-FLANGE KIT	

**AC Induction Motor Performance Data**

Record # 85832

Typical performance - not guaranteed values

Winding: 36WGQ041-R001		Type: 3640LC		Enclosure: OPEN			
<b>Nameplate Data</b>			<b>230 V, 60 Hz: Single Voltage Motor</b>				
Rated Output (HP)	5	Full Load Torque	15.12 LB-FT				
Volts	230	Start Configuration	direct on line				
Full Load Amps	21	Breakdown Torque	28.64 LB-FT				
R.P.M.	1725	Pull-up Torque	29.2 LB-FT				
Hz	60 Phase	1	Locked-rotor Torque	41.44 LB-FT			
NEMA Design Code	L	KVA Code	G	Starting Current	132 A		
Service Factor (S.F.)	1.15	No-load Current	5.01 A				
NEMA Nom. Eff.	82.5	Power Factor	95	Line-line Res. @ 25°C	0.521 Ω A Ph 1.93 Ω B Ph		
Rating - Duty	40C	AMB-CONT	Temp. Rise @ Rated Load			78°C	
S.F. Amps	Temp. Rise @ S.F. Load			96°C			
Locked-rotor Power Factor			90.1				
Rotor inertia			0.375 lb-ft <sup>2</sup>				

**Load Characteristics 230 V, 60 Hz, 5 HP**

% of Rated Load	25	50	75	100	125	150	S.F.
Power Factor	75	89	94	95	94	93	94
Efficiency	74.3	83.7	84.4	82.5	78.3	72.1	80
Speed	1783	1766	1747	1725	1694	1652	1706
Line amperes	7.15	10.83	15.29	20.62	27.32	35.9	24.6

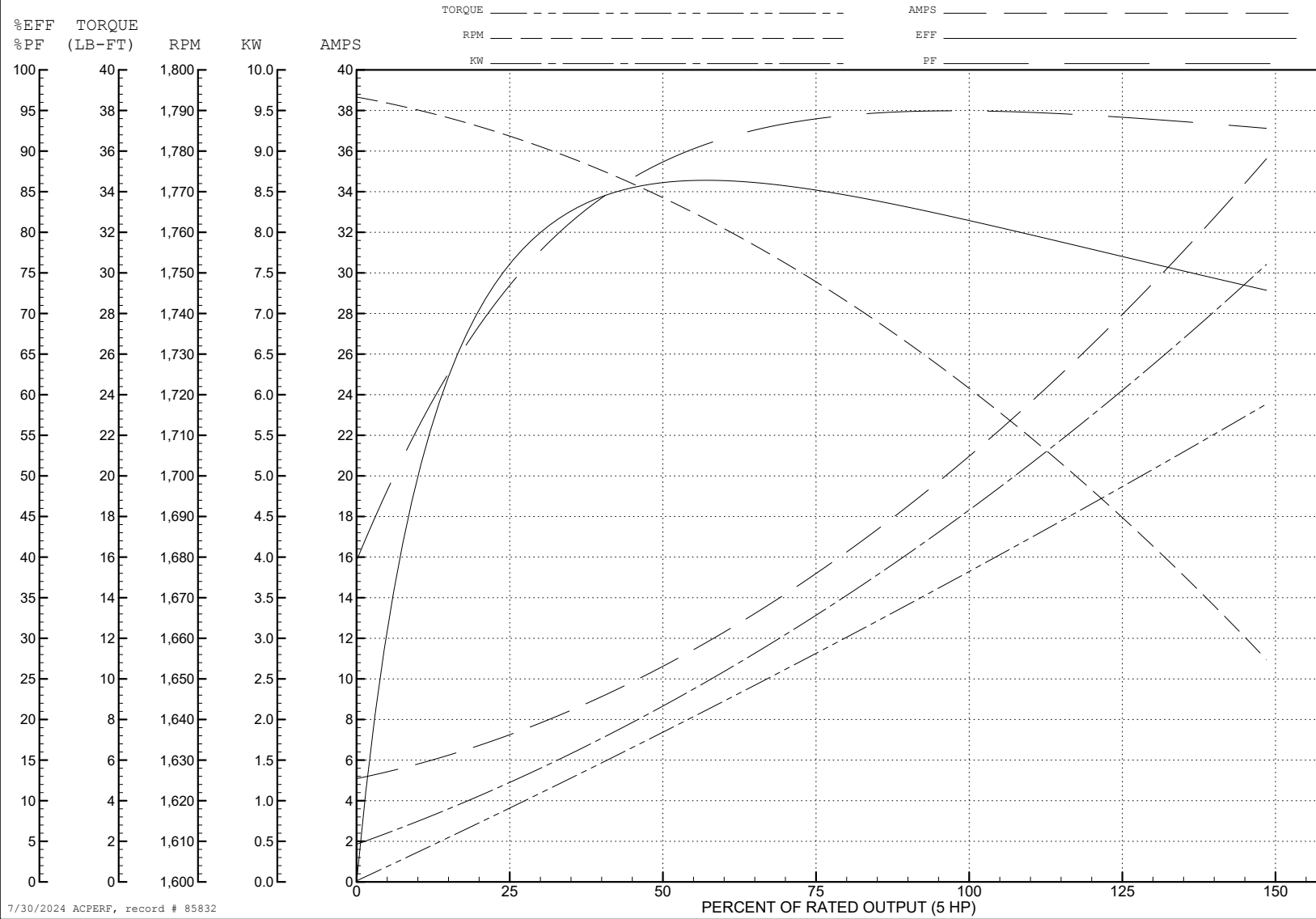
ABB Motors and Mechanical Inc.

WINDING # 36WGQ041

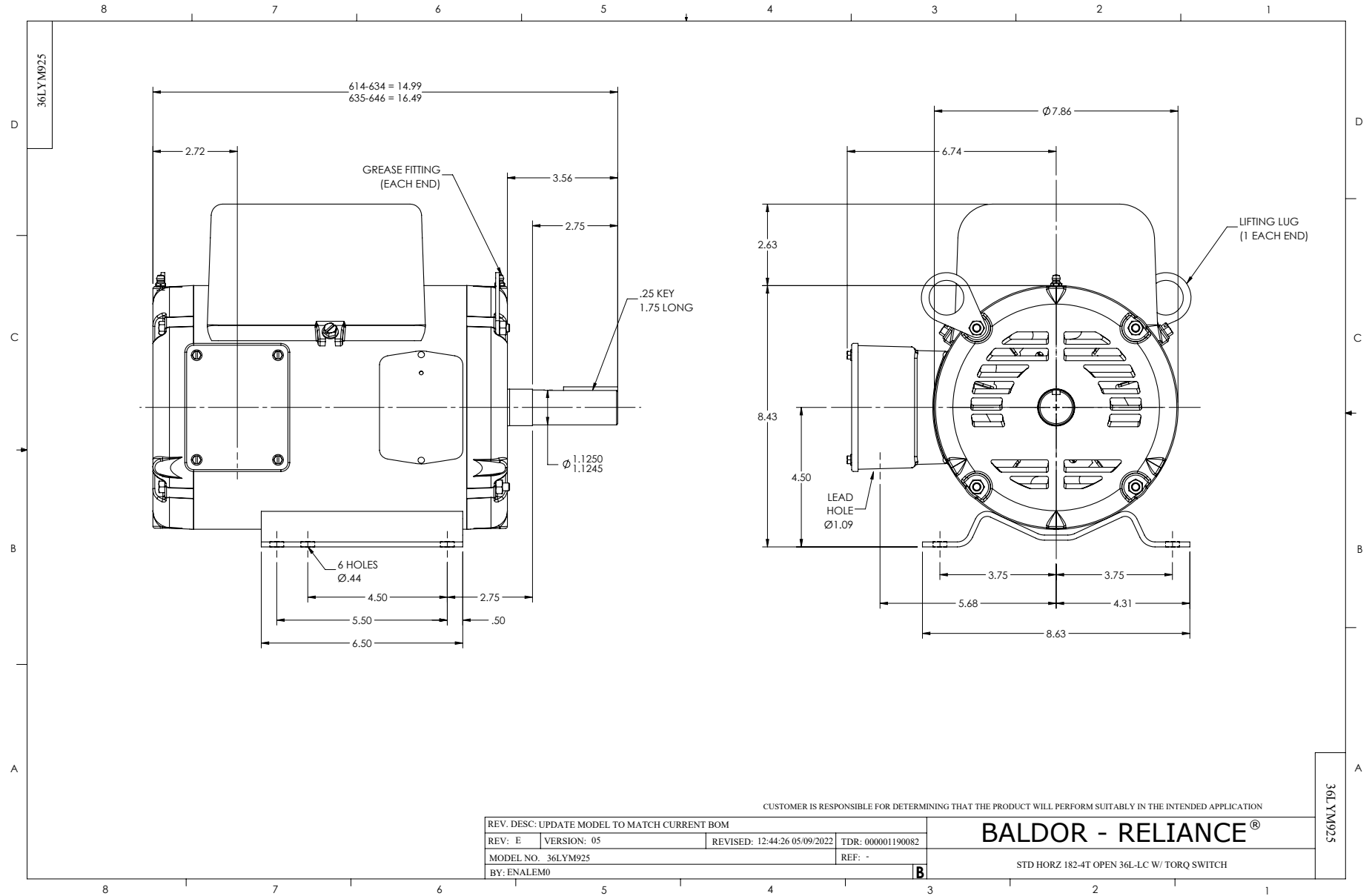
Typical performance - not guaranteed values.

5 HP 1 PH 60 HZ 1725 RPM 230 V 3640LC

TORQUES (LB-FT): PO=28.64 PU=29.2 LR=41.44 LRA=132

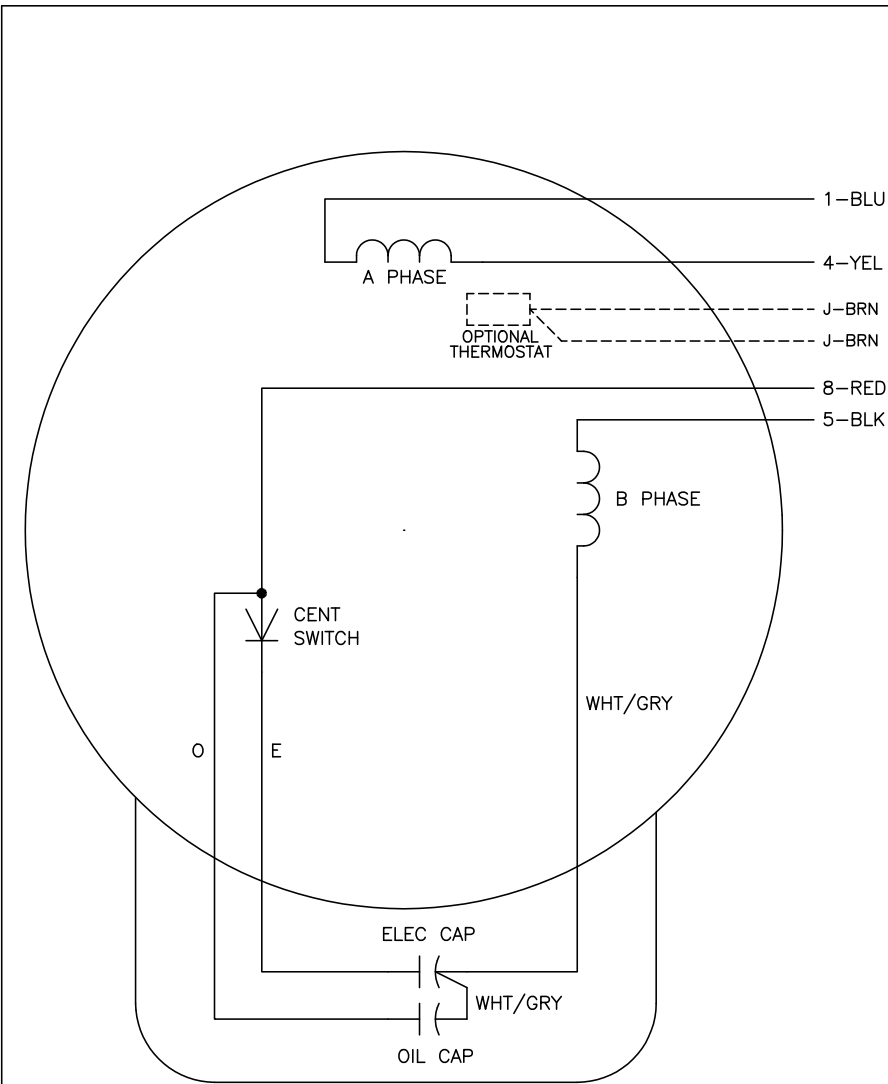


7/30/2024 ACPERF, record # 85832





CD0017A02



	LINE A	LINE B
STD	1,8	4,5
OPP	1,5	4,8

NOTES:

1. STANDARD ROTATION IS CCW FACING END OPPOSITE SHAFT EXTENSION.
2. OPTIONAL THERMOSTAT IS PROVIDED WHEN SPECIFIED.
3. MULTIPLE CAPACITORS ARE CONNECTED IN PARALLEL UNLESS OTHERWISE SPECIFIED.
4. LEAD COLORS ARE OPTIONAL. LEADS MUST ALWAYS BE NUMBERED AS SHOWN.

CD0017A02

REV. DESC: REVISE TO SHOW OPTIONAL COLORS			
REV. LTR: B	BY: JLP	REVISED: 04/09/99 11:30	TDR: 0178636
CD0017A02		FILE: AAA00007514	MDL: -
		MTL: -	

**BALDOR ELECTRIC Co.**

TYPE LC, SV, REV, 4 LEADS