



---

# Customer information packet

## L1408T

3HP, 1725RPM, 1PH, 60HZ, 184T, 3634LC, OPEN, F1

Class - None

Division - Not Applicable

## Specifications

Enclosure	OPEN
Frame	184T
Frame Material	Steel
Frequency	60.00 Hz
Haz Area Class and Group	None
Haz Area Division	Not Applicable
Motor Letter Type	Cap Start, Cap Run
Output @ Frequency	3.000 HP @ 60 HZ
Phase	1
Synchronous Speed @ Frequency	1800 RPM @ 60 HZ
Voltage @ Frequency	115.0 V @ 60 HZ 230.0 V @ 60 HZ
Agency Approvals	CSA UR
Ambient Temperature	40 °C
Auxillary Box	No Auxillary Box
Auxillary Box Lead Termination	None
Base Indicator	Rigid
Bearing Grease Type	Polyrex EM (-20F +300F)
Blower	None
Current @ Voltage	32.000 A @ 115.0 V 16.800 A @ 208.0 V 16.000 A @ 230.0 V
Design Code	L
Drip Cover	No Drip Cover
Duty Rating	CONT
Efficiency @ 100% Load	78.0 %
Electrically Isolated Bearing	Not Electrically Isolated
Feedback Device	NO FEEDBACK
Front Face Code	Standard
Front Shaft Indicator	None
Heater Indicator	No Heater

## Part detail

Revision	AU
Type	AC
Mech. spec.	36E002
Base	
Status	PRD/A
Elec. spec.	36WG2759
Layout	36LYE002
Eff. date	05-09-2024
CD Diagram	CD0016A01
Poles	04
Leads	4#14 A PH,3#16 B PH
Proprietary	False
Created date	01-01-0001

High Voltage Full Load Amps	16.0 a
Insulation Class	F
Inverter Code	Not Inverter
KVA Code	H
Lifting Lugs	No Lifting Lugs
Locked Bearing Indicator	No Locked Bearing
Motor Lead Exit	Ko Box
Motor Lead Quantity/Wire Size	4 @ 14 AWG, A PH
Motor Lead Termination	Flying Leads
Motor Standards	NEMA
Motor Type	3634LC
Mounting Arrangement	F1
Number of Poles	4
Overall Length	15.00 IN
Power Factor	78
Product Family	General Purpose
Pulley End Bearing Type	Ball
Pulley Face Code	Standard
Pulley Shaft Indicator	Standard
Rodent Screen	None
Service Factor	1.15
Shaft Diameter	1.125 IN
Shaft Extension Location	Pulley End
Shaft Ground Indicator	No Shaft Grounding
Shaft Rotation	Reversible
Shaft Slinger Indicator	No Slinger
Speed	1725 rpm
Speed Code	Single Speed
Starting Method	Direct on line
Thermal Device - Bearing	None
Thermal Device - Winding	None
Vibration Sensor Indicator	No Vibration Sensor
Winding Thermal 1	None
Winding Thermal 2	None

**Nameplate**

<b>NP1256L</b>									
<b>CAT.NO.</b>	L1408T								
<b>SPEC.</b>	36E02-2759								
<b>HP</b>	3								
<b>VOLTS</b>	115/230								
<b>AMP</b>	32/16								
<b>RPM</b>	1725								
<b>FRAME</b>	184T		<b>HZ</b>	60		<b>PH</b>	1		
<b>SER.F.</b>	1.15	<b>CODE</b>	H	<b>DES</b>	L	<b>CLASS</b>	F		
<b>NEMA-NOM-EFF</b>	78	<b>PF</b>	78						
<b>RATING</b>	40C AMB-CONT								
<b>CC</b>									
<b>DE</b>	6206		<b>ODE</b>	6205					
<b>ENCL</b>	OPEN	<b>SN</b>							

**Accessories**

<b>Part number</b>	<b>Description</b>	<b>Multiplier</b>
36-3403	C FACE KIT	A8
36EP1405A09SP	D-FLANGE KIT	

**AC Induction Motor Performance Data**

Record # 61451

Typical performance - not guaranteed values

<b>Winding: 36WG2759-R003</b>		<b>Type: 3634LC</b>		<b>Enclosure: OPEN</b>	
<b>Nameplate Data</b>			<b>230 V, 60 Hz: High Voltage Connection</b>		
<b>Rated Output (HP)</b>	3		<b>Full Load Torque</b>	9 LB-FT	
<b>Volts</b>	115/230		<b>Start Configuration</b>	direct on line	
<b>Full Load Amps</b>	32/16		<b>Breakdown Torque</b>	21 LB-FT	
<b>R.P.M.</b>	1725		<b>Pull-up Torque</b>	14.4 LB-FT	
<b>Hz</b>	<b>60 Phase</b>	1	<b>Locked-rotor Torque</b>	30.8 LB-FT	
<b>NEMA Design Code</b>	<b>L KVA Code</b>	H	<b>Starting Current</b>	107 A	
<b>Service Factor (S.F.)</b>	1.15		<b>No-load Current</b>	8.5 A	
<b>NEMA Nom. Eff.</b>	<b>78 Power Factor</b>	78	<b>Line-line Res. @ 25°C</b>	4.156 Ω A Ph 0.586 Ω B Ph	
<b>Rating - Duty</b>	40C AMB-CONT		<b>Temp. Rise @ Rated Load</b>	57°C	
<b>S.F. Amps</b>			<b>Temp. Rise @ S.F. Load</b>	72°C	

**Load Characteristics 230 V, 60 Hz, 3 HP**

<b>% of Rated Load</b>	<b>25</b>	<b>50</b>	<b>75</b>	<b>100</b>	<b>125</b>	<b>150</b>	<b>S.F.</b>
<b>Power Factor</b>	45	64	73	79	85	83	83
<b>Efficiency</b>	62.6	74.9	78.6	78	75	74.9	76.1
<b>Speed</b>	1788	1780	1769	1756	1733	1721	1742
<b>Line amperes</b>	9.1	10.4	15.8	16	19	23	17.8

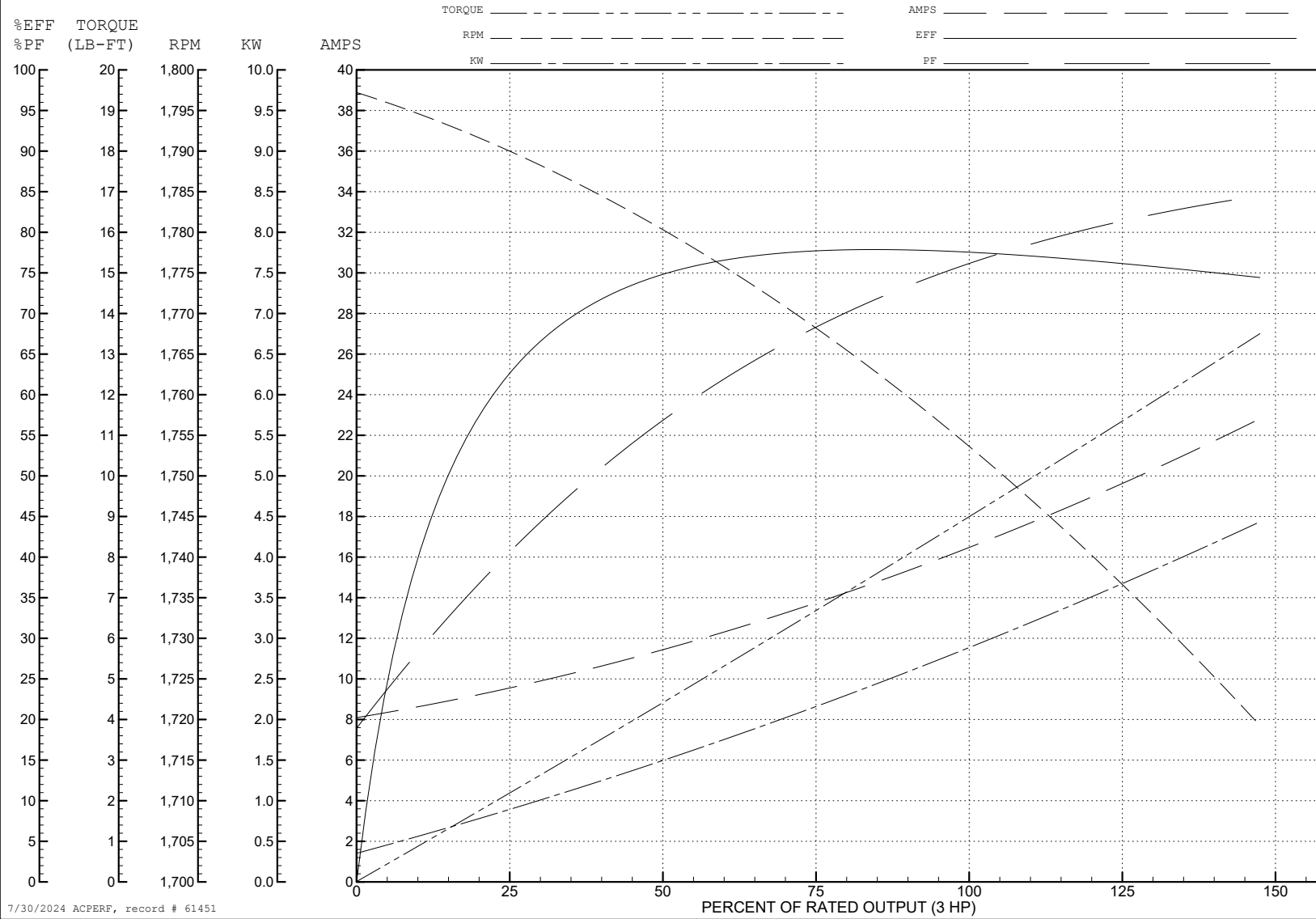
ABB Motors and Mechanical Inc.

WINDING # 36WG2759

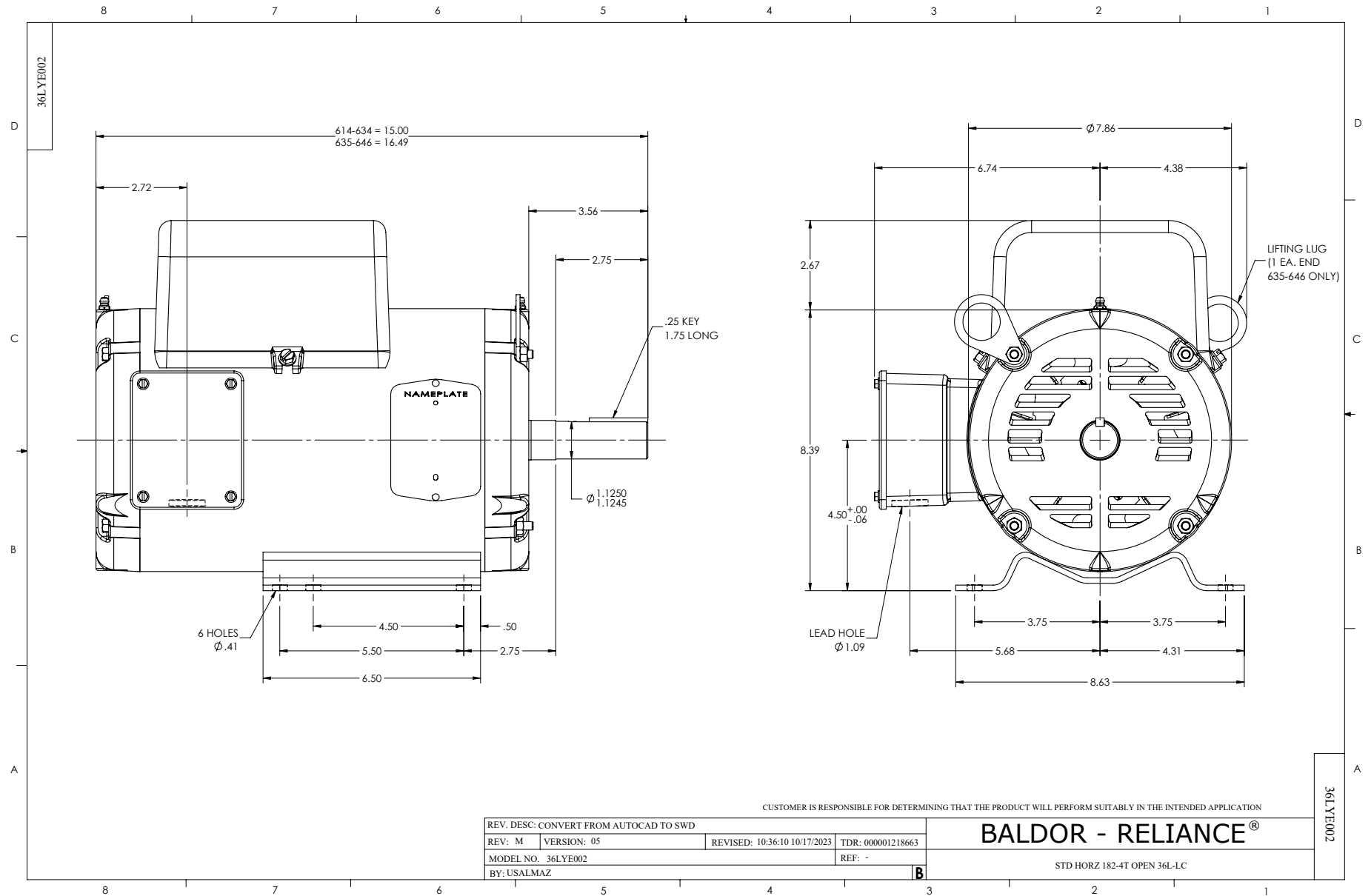
Typical performance - not guaranteed values.

3 HP 1 PH 60 HZ 1725 RPM 230 V 3634LC

TORQUES (LB-FT): PO=21 PU=14.4 LR=30.8 LRA=107

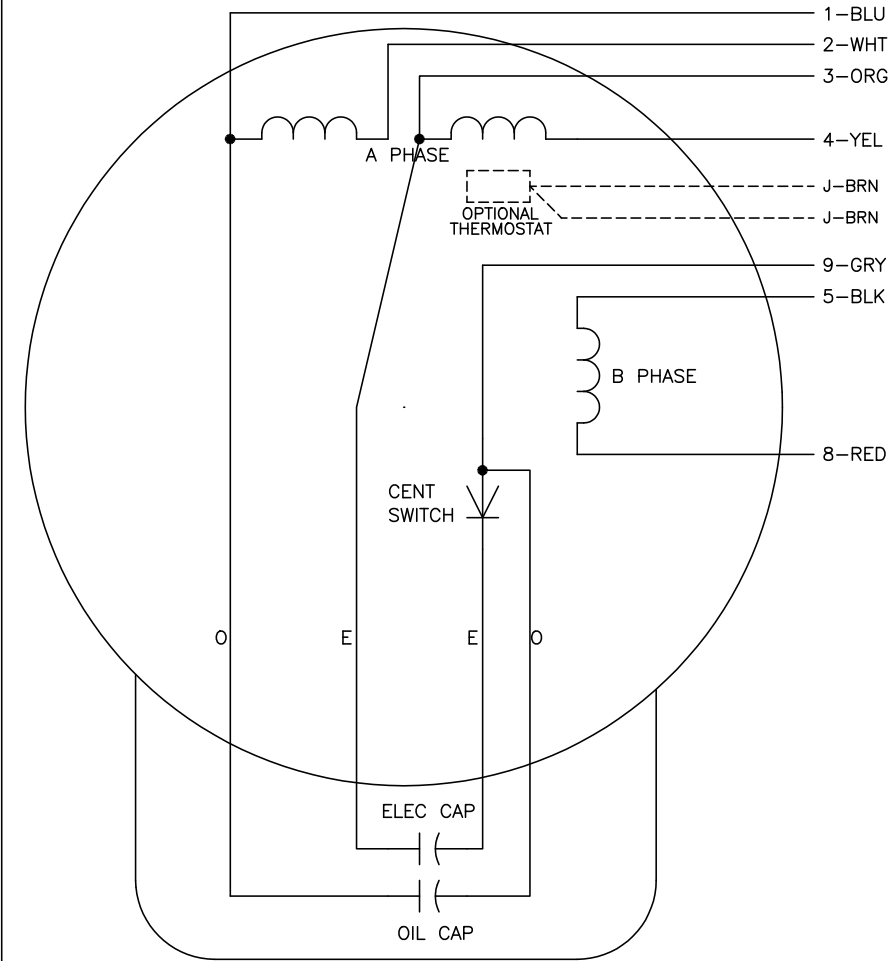


7/30/2024 ACPERF, record # 61451





CD0016A01



	LINE A	LINE B	JOIN	JOIN
HIGH STD	1	4,5	2,3	8,9
HIGH OPP	1	4,8	2,3	5,9
LOW STD	1,3	2,4,5	8,9	-
LOW OPP	1,3	2,4,8	5,9	-

NOTES:

1. STANDARD ROTATION IS CCW FACING END OPPOSITE SHAFT EXTENSION.
2. OPTIONAL THERMOSTAT IS PROVIDED WHEN SPECIFIED.
3. MULTIPLE CAPACITORS ARE CONNECTED IN PARALLEL UNLESS OTHERWISE SPECIFIED.
4. LEAD COLORS ARE OPTIONAL. LEADS MUST ALWAYS BE NUMBERED AS SHOWN.

REV. DESC: REVISE TO SHOW OPTIONAL COLORS			
REV. LTR: E	BY: JLP	REVISED: 04/09/99 1:19	TDR: 0178636
10A91000		FILE: AAA00007410	MDL: -
		MTL: -	

**BALDOR ELECTRIC Co.**

TYPE LC, DV, REV, OIL CAP ACR. LINE, 7 LEADS

CD0016A01