



Customer information packet

L1405T-50

2/1.5KW, 1460RPM, 1PH, 50HZ, 182T, 3646LC, OPE

Class - None

Division - Not Applicable

Specifications

Enclosure	OPEN
Frame	182T
Frame Material	Steel
Frequency	50.00 Hz
Haz Area Class and Group	None
Haz Area Division	Not Applicable
Motor Letter Type	Cap Start, Cap Run
Output @ Frequency	1.500 KW @ 50 HZ
Phase	1
Synchronous Speed @ Frequency	1500 RPM @ 50 HZ
Voltage @ Frequency	110.0 V @ 50 HZ 220.0 V @ 50 HZ
Agency Approvals	C UR US CE CURUS UKCA WEEE
Ambient Temperature	40 °C
Auxillary Box	No Auxillary Box
Auxillary Box Lead Termination	None
Base Indicator	Rigid
Bearing Grease Type	Polyrex EM (-20F +300F)
Blower	None
Current @ Voltage	9.200 A @ 220.0 V 18.400 A @ 110.0 V
Design Code	-
Drip Cover	No Drip Cover
Duty Rating	CONT
Efficiency @ 100% Load	82.8 %
Electrically Isolated Bearing	Not Electrically Isolated
Feedback Device	NO FEEDBACK
Front Shaft Indicator	None

Part detail

Revision	D
Type	AC
Mech. spec.	36E002
Base	
Status	PRD/A
Elec. spec.	36WGQ057
Layout	36LYE002
Eff. date	05-09-2024
CD Diagram	CD0055
Poles	04
Leads	4#14 A PH,2#16 B PH
Proprietary	False
Created date	03-08-2023

Heater Indicator	No Heater
High Voltage Full Load Amps	9.2 a
Insulation Class	F
Inverter Code	Not Inverter
KVA Code	K
Lifting Lugs	No Lifting Lugs
Locked Bearing Indicator	No Locked Bearing
Motor Lead Quantity/Wire Size	4 @ 14 AWG, A PH
Motor Lead Termination	Flying Leads
Motor Standards	NEMA
Motor Type	3646LC
Mounting Arrangement	F1
Number of Poles	4
Overall Length	16.50 IN
Power Factor	90
Product Family	General Purpose
Pulley End Bearing Type	Ball
Pulley Face Code	Standard
Pulley Shaft Indicator	Standard
Rodent Screen	None
Service Factor	1.15
Shaft Diameter	1.125 IN
Shaft Ground Indicator	No Shaft Grounding
Shaft Rotation	Reversible
Shaft Slinger Indicator	No Slinger
Speed	1460 rpm
Speed Code	Single Speed
Starting Method	Direct on line
Thermal Device - Bearing	None
Thermal Device - Winding	None
Vibration Sensor Indicator	No Vibration Sensor
Winding Thermal 1	None
Winding Thermal 2	None

Nameplate

NP1372L									
CAT.NO.	L1405T-50								
SPEC.	36E002Q057								
HP	2/1.5KW								
VOLTS	110/220								
AMP	18.4/9.2								
R.P.M. (1/MIN)	1460								
FRAME	182T	HZ	50	PH	1				
SER.F.	1.15	CODE	K	DES	-	CL	F		
NEMA-NOM-EFF	82.8	PF	90						
RATING	40C AMB-S1 CONT								
CC	IP22 45KG IC01								
DE	6206	ODE	6205						
ENCL	OPEN	SN							

Accessories

Part number	Description	Multiplier
36-3403	C FACE KIT	A8
36EP1405A09SP	D-FLANGE KIT	

AC Induction Motor Performance Data

Record # 101575

Typical performance - not guaranteed values

Winding: 36WGQ057-R001		Type: 3646LC		Enclosure: OPEN	
Nameplate Data			220 V, 50 Hz: High Voltage Connection		
Rated Output (KW)	1.5		Full Load Torque	7.194 LB-FT	
Volts	110/220		Start Configuration	direct on line	
Full Load Amps	18.4/9.2		Breakdown Torque	20.9 LB-FT	
R.P.M.	1460		Pull-up Torque	11.1 LB-FT	
Hz	50 Phase	1	Locked-rotor Torque	24.9 LB-FT	
NEMA Design Code	- KVA Code	K	Starting Current	73.9 A	
Service Factor (S.F.)	1.15		No-load Current	2.3 A	
NEMA Nom. Eff.	82.8 Power Factor	90	Line-line Res. @ 25°C	0.85264 Ω A Ph 0.83098 Ω B Ph	
Rating - Duty	40C AMB-CONT		Temp. Rise @ Rated Load	28°C	
S.F. Amps			Temp. Rise @ S.F. Load	36°C	

Load Characteristics 220 V, 50 Hz, 1.5 KW

% of Rated Load	25	50	75	100	125	150	S.F.
Power Factor	71	85	90	92	92	93	92
Efficiency	75.1	83.5	85.2	84.5	82.4	79.2	83.2
Speed	1491.2	1482.4	1473	1462.5	1449.9	1434.3	1455
Line amperes	3.19	4.82	6.69	8.75	11.1	13.9	10.2

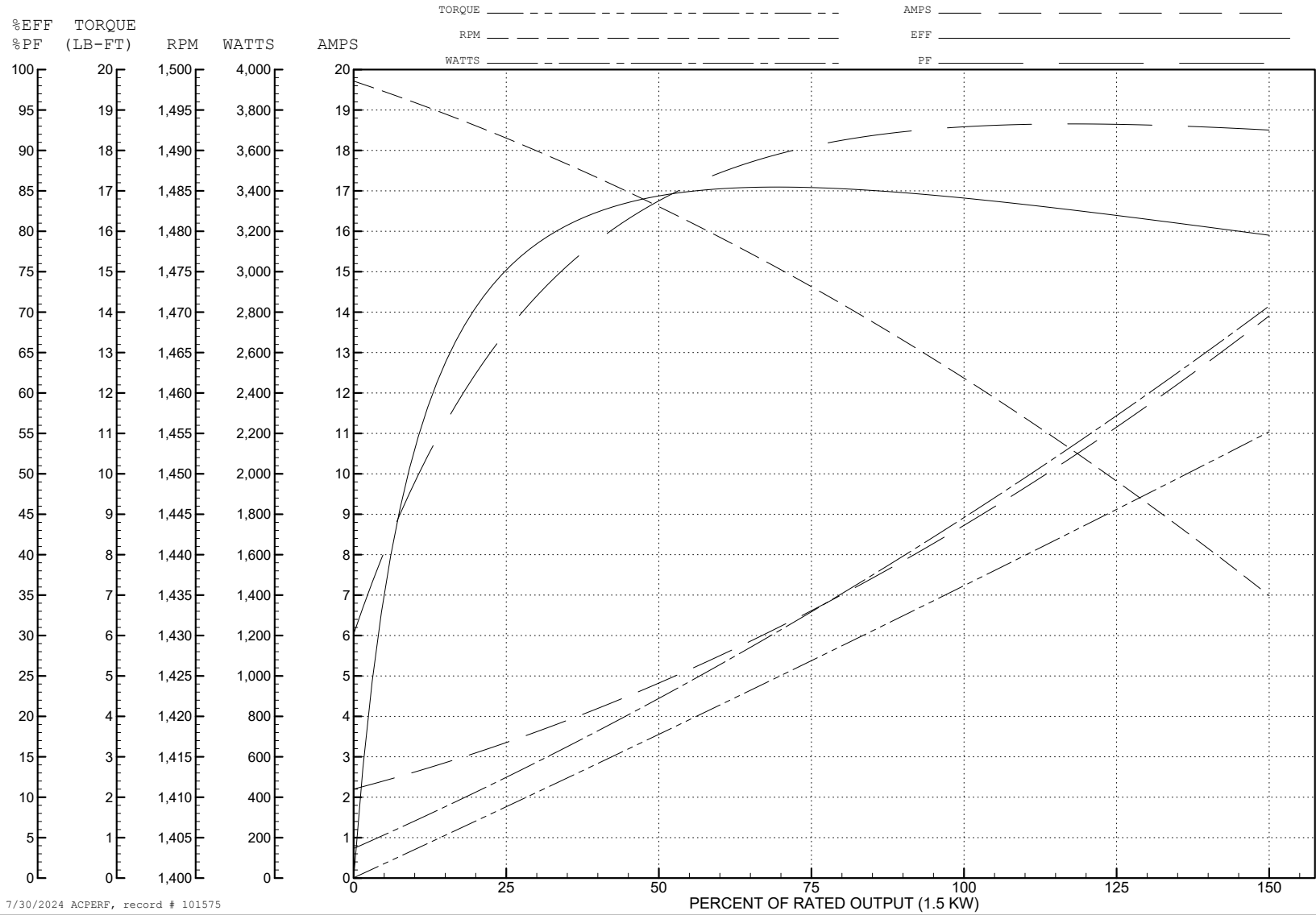
ABB Motors and Mechanical Inc.

WINDING # 36WGQ057

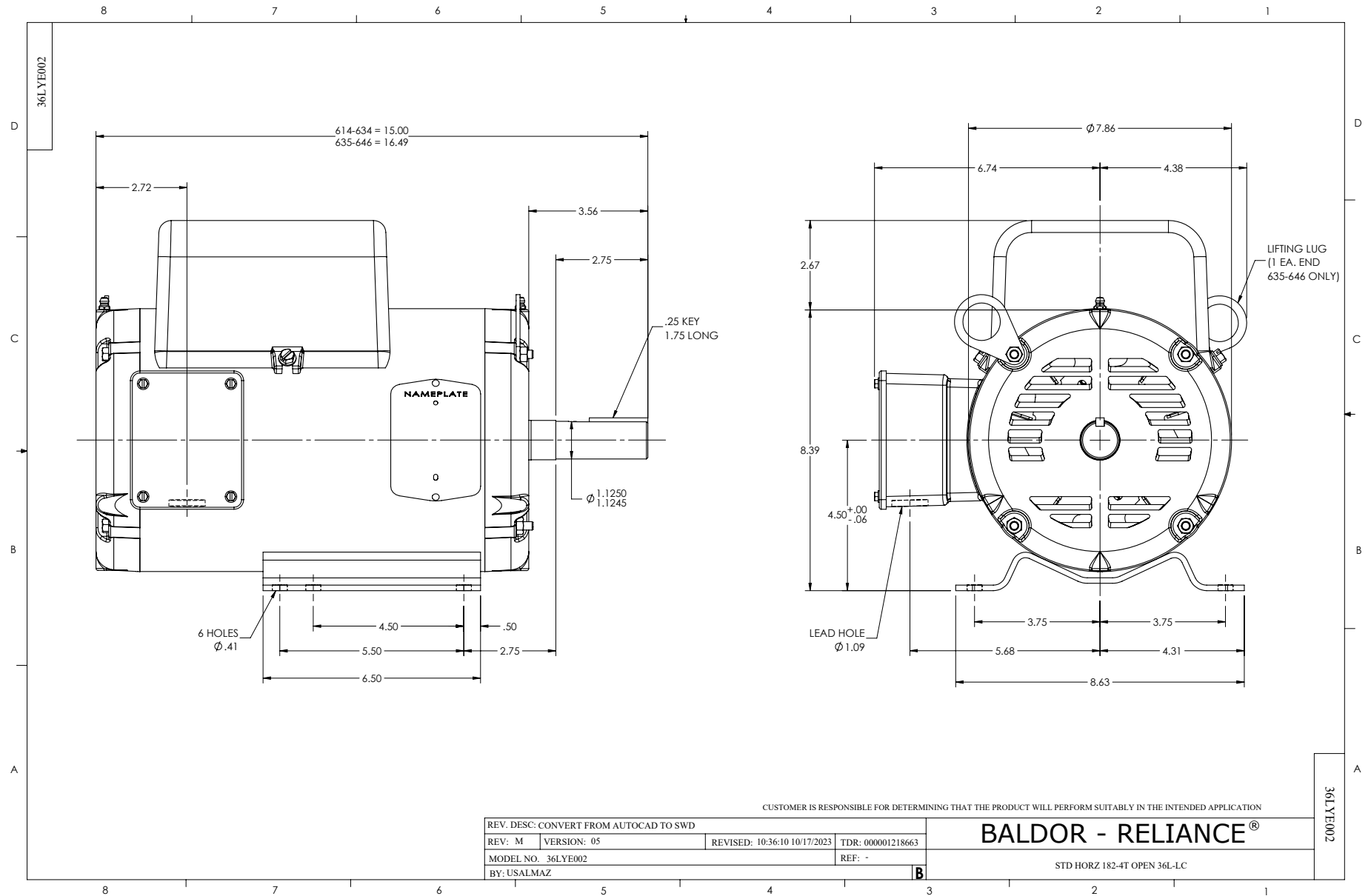
Typical performance - not guaranteed values.

1.5 KW 1 PH 50 HZ 1460 RPM 220 V 3646LC

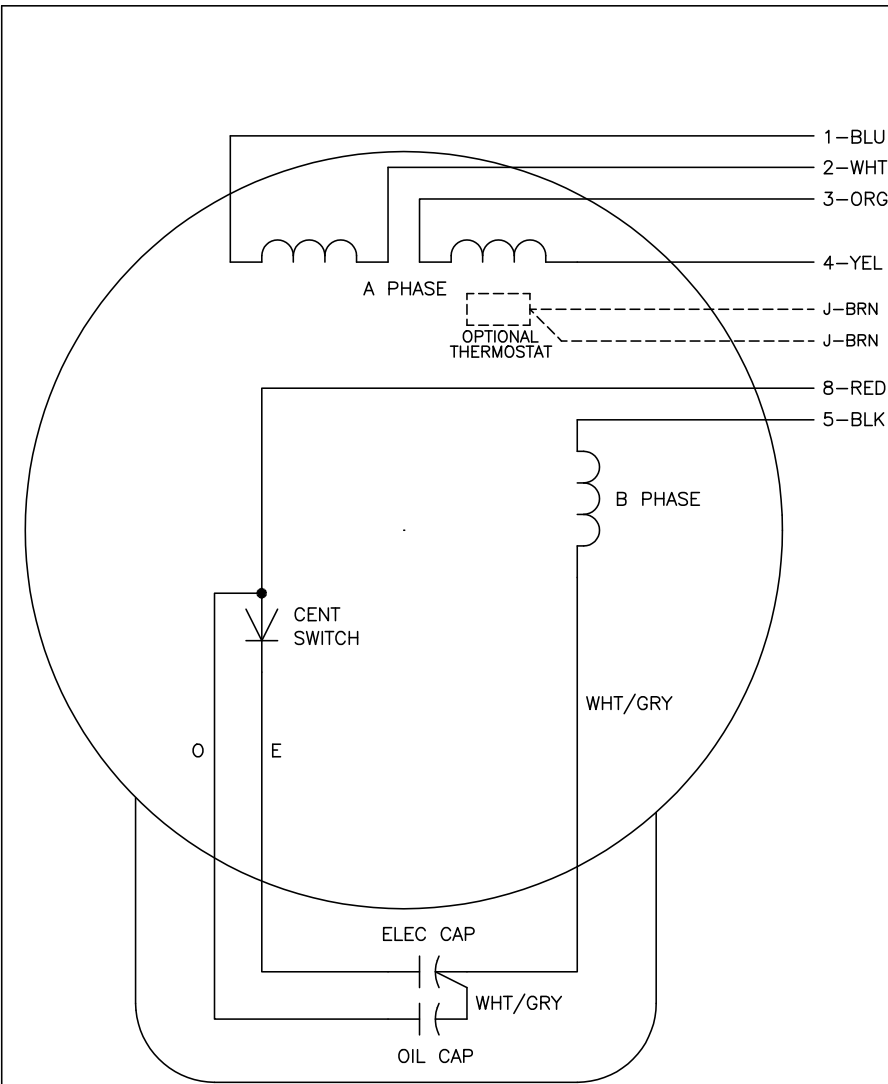
TORQUES (LB-FT): PO=20.9 PU=11.1 LR=24.9 LRA=73.9



7/30/2024 ACPERF, record # 101575



CD0055



	LINE A	LINE B	JOIN
HIGH STD	1	4,5	2,3,8
HIGH OPP	1	4,8	2,3,5
LOW STD	1,3,8	2,4,5	-
LOW OPP	1,3,5	2,4,8	-

NOTES:

1. STANDARD ROTATION IS CCW FACING END OPPOSITE SHAFT EXTENSION.
2. OPTIONAL THERMOSTAT IS PROVIDED WHEN SPECIFIED.
3. MULTIPLE CAPACITORS ARE CONNECTED IN PARALLEL UNLESS OTHERWISE SPECIFIED.
4. LEAD COLORS ARE OPTIONAL. LEADS MUST ALWAYS BE NUMBERED AS SHOWN.

CD0055

REV. DESC: REVISE TO SHOW OPTIONAL COLORS			
REV. LTR: D	BY: JLP	REVISED: 04/08/99 1:17	TDR: 0178636
C00000		FILE: AAA00007414	MDL: -
		MTL: -	

BALDOR ELECTRIC Co.

TYPE LC, DV, REV, 6 LEADS