

BALDOR • RELIANCE

Customer information packet

L1322TM

2HP, 1725RPM, 1PH, 60HZ, 145T, 3532LC, OPEN, F1

Class - None

Division - Not Applicable

Specifications

Enclosure	OPEN
Frame	145T
Frame Material	Steel
Frequency	60.00 Hz
Haz Area Class and Group	None
Haz Area Division	Not Applicable
Motor Letter Type	Cap Start, Cap Run
Output @ Frequency	2.000 HP @ 60 HZ
Phase	1
Synchronous Speed @ Frequency	1800 RPM @ 60 HZ
Voltage @ Frequency	115.0 V @ 60 HZ 230.0 V @ 60 HZ
Agency Approvals	UR CSA
Ambient Temperature	40 °C
Auxillary Box	No Auxillary Box
Auxillary Box Lead Termination	None
Base Indicator	Rigid
Bearing Grease Type	Polyrex EM (-20F +300F)
Blower	None
Current @ Voltage	18.400 A @ 115.0 V 9.200 A @ 230.0 V
Design Code	L
Drip Cover	No Drip Cover
Duty Rating	CONT
Efficiency @ 100% Load	78.5 %
Electrically Isolated Bearing	Not Electrically Isolated
Feedback Device	NO FEEDBACK
Front Face Code	Standard
Front Shaft Indicator	None
Heater Indicator	No Heater
High Voltage Full Load Amps	9.2 a

Part detail

Revision	L
Type	AC
Mech. spec.	35EE002
Base	
Status	PRD/A
Elec. spec.	35WGY690
Layout	35LYEE002
Eff. date	05-09-2024
CD Diagram	CD0320
Poles	04
Leads	4#16 A&J,2#18 B PH,1#14 #4TH
Proprietary	False
Created date	12-22-2009

Insulation Class	F
Inverter Code	Not Inverter
KVA Code	J
Lifting Lugs	No Lifting Lugs
Locked Bearing Indicator	No Locked Bearing
Motor Lead Exit	Ko Box
Motor Lead Quantity/Wire Size	4 @ 16 AWG, A&J
Motor Lead Termination	Flying Leads
Motor Standards	NEMA
Motor Type	3532LC
Mounting Arrangement	F1
Number of Poles	4
Overall Length	13.00 IN
Power Factor	89
Product Family	General Purpose
Pulley End Bearing Type	Ball
Pulley Face Code	Standard
Pulley Shaft Indicator	Standard
Rodent Screen	None
Service Factor	1.15
Shaft Diameter	0.875 IN
Shaft Extension Location	Pulley End
Shaft Ground Indicator	No Shaft Grounding
Shaft Rotation	Reversible
Shaft Slinger Indicator	No Slinger
Speed	1725 rpm
Speed Code	Single Speed
Starting Method	Direct on line
Thermal Device - Bearing	None
Thermal Device - Winding	None
Vibration Sensor Indicator	No Vibration Sensor
Winding Thermal 1	Manual Thermal Overload
Winding Thermal 1 Location	SK
Winding Thermal 2	None

Nameplate

NP1257L									
CAT.NO.	L1322TM								
SPEC.	35EE002Y690								
HP	2								
VOLTS	115/230								
AMP	18.4/9.2								
RPM	1725								
FRAME	145T		HZ	60		PH	1		
SER.F.	1.15	CODE	J	DES	L	CL	F		
NEMA-NOM-EFF	78.5	PF	89						
RATING	40C AMB-CONT								
CC									
DE	6205	ODE	6203						
ENCL	OPEN	SN							

AC Induction Motor Performance Data

Record # 61958

Typical performance - not guaranteed values

Winding: 35WGY690-R004		Type: 3532LC		Enclosure: OPEN		
Nameplate Data			115 V, 60 Hz: Low Voltage Connection			
Rated Output (HP)	2		Full Load Torque	6 LB-FT		
Volts	115/230		Start Configuration	direct on line		
Full Load Amps	18.4/9.2		Breakdown Torque	13 LB-FT		
R.P.M.	1725		Pull-up Torque	12.5 LB-FT		
Hz	60	Phase	1	Locked-rotor Torque	15.5 LB-FT	
NEMA Design Code	L		KVA Code	J	Starting Current	120 A
Service Factor (S.F.)	1.15		No-load Current	6 A		
NEMA Nom. Eff.	78.5	Power Factor	89	Line-line Res. @ 25°C	0.355 Ω A Ph 1.22 Ω B Ph	
Rating - Duty	40C AMB-CONT		Temp. Rise @ Rated Load	47°C		
S.F. Amps			Temp. Rise @ S.F. Load	56°C		
			Locked-rotor Power Factor	88.1		
			Rotor inertia	0.19 LB-FT ²		

Load Characteristics 115 V, 60 Hz, 2 HP

% of Rated Load	25	50	75	100	125	150	S.F.
Power Factor	60	78	88	90	91	90	91
Efficiency	67	74.9	78.7	79	75.2	71.7	76.7
Speed	1789	1775	1760	1743	1721	1694	1730
Line amperes	8.2	11.2	14.2	18.2	23.2	29.2	21.2

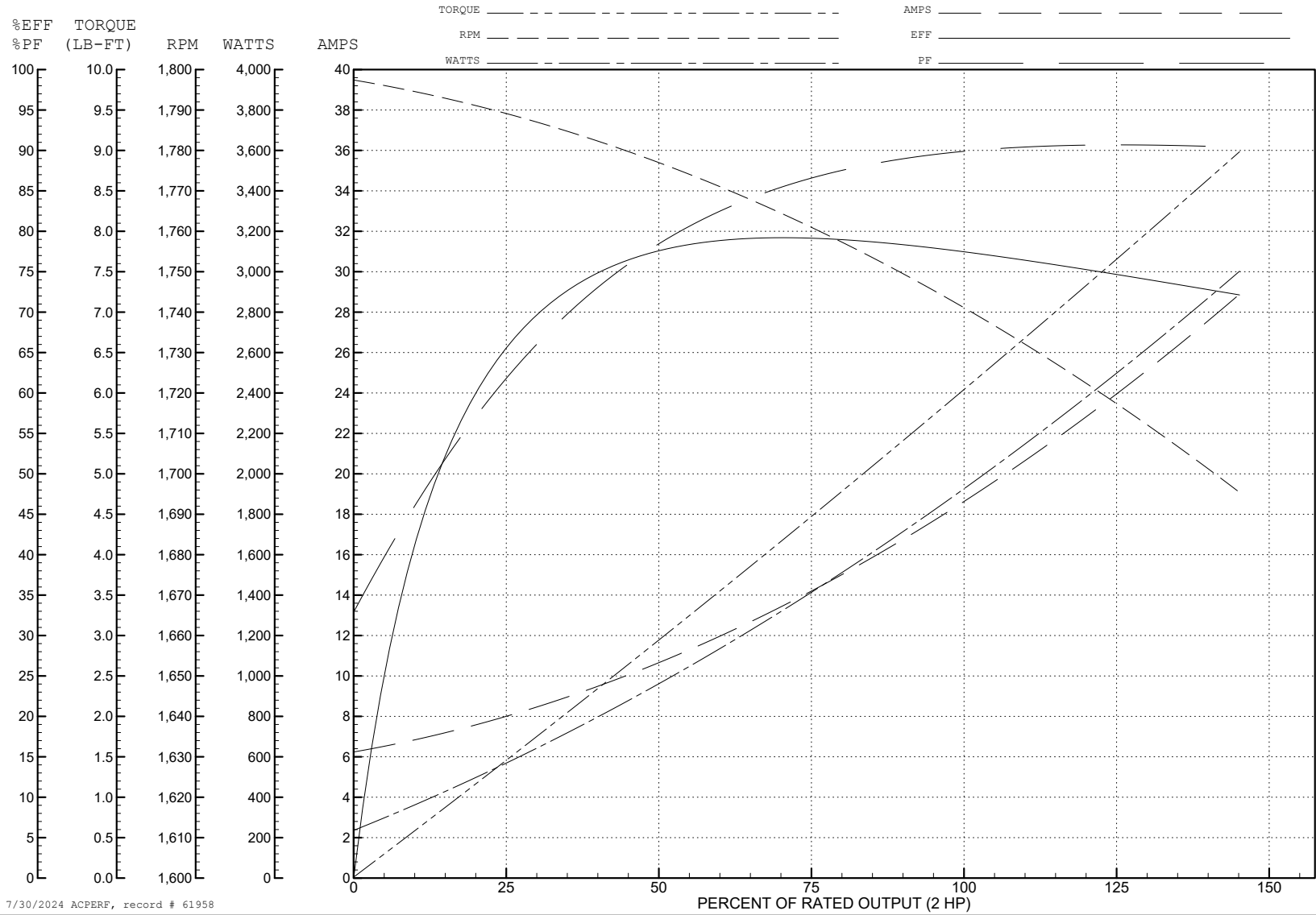
ABB Motors and Mechanical Inc.

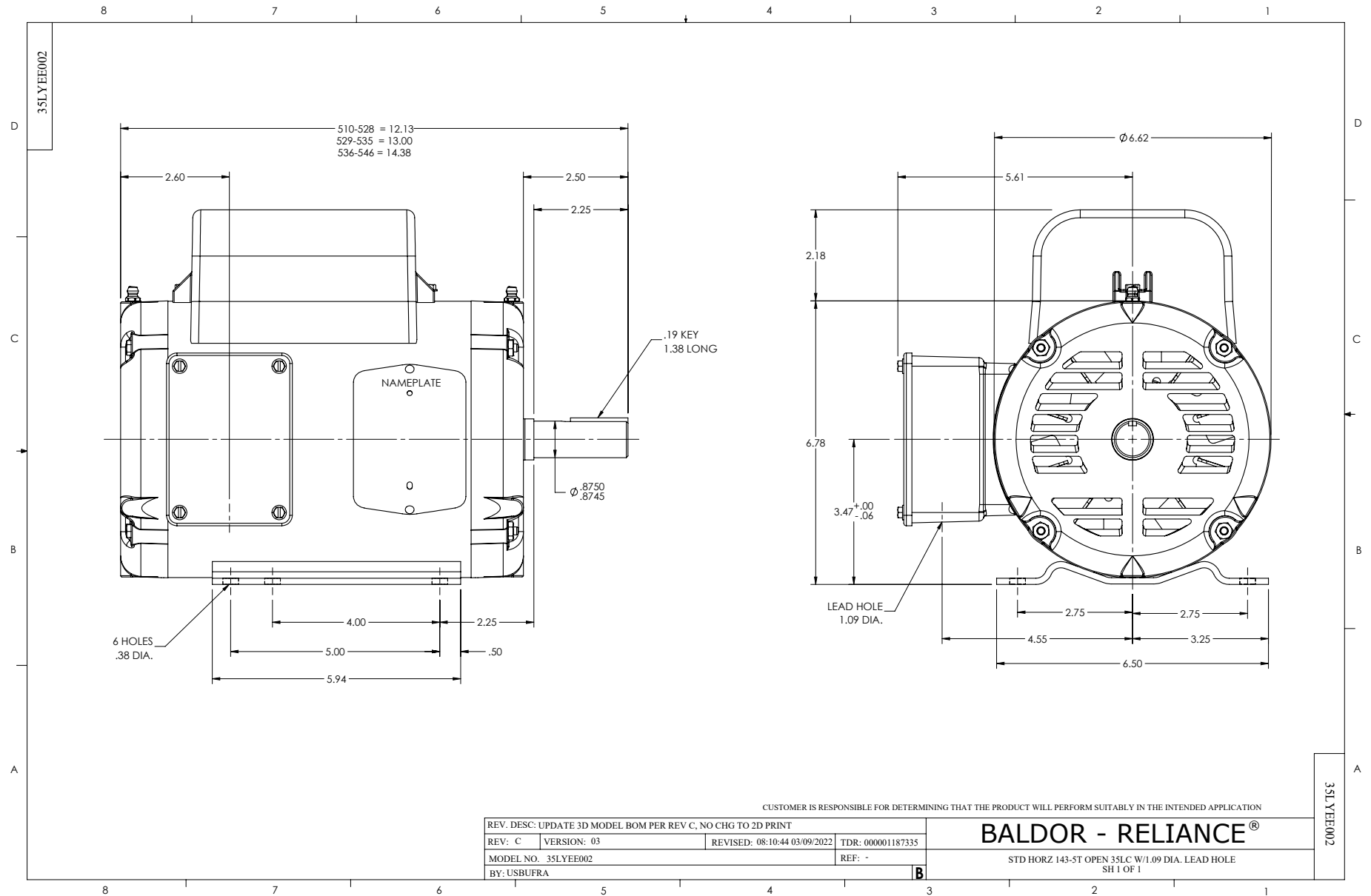
WINDING # 35WGY690

Typical performance - not guaranteed values.

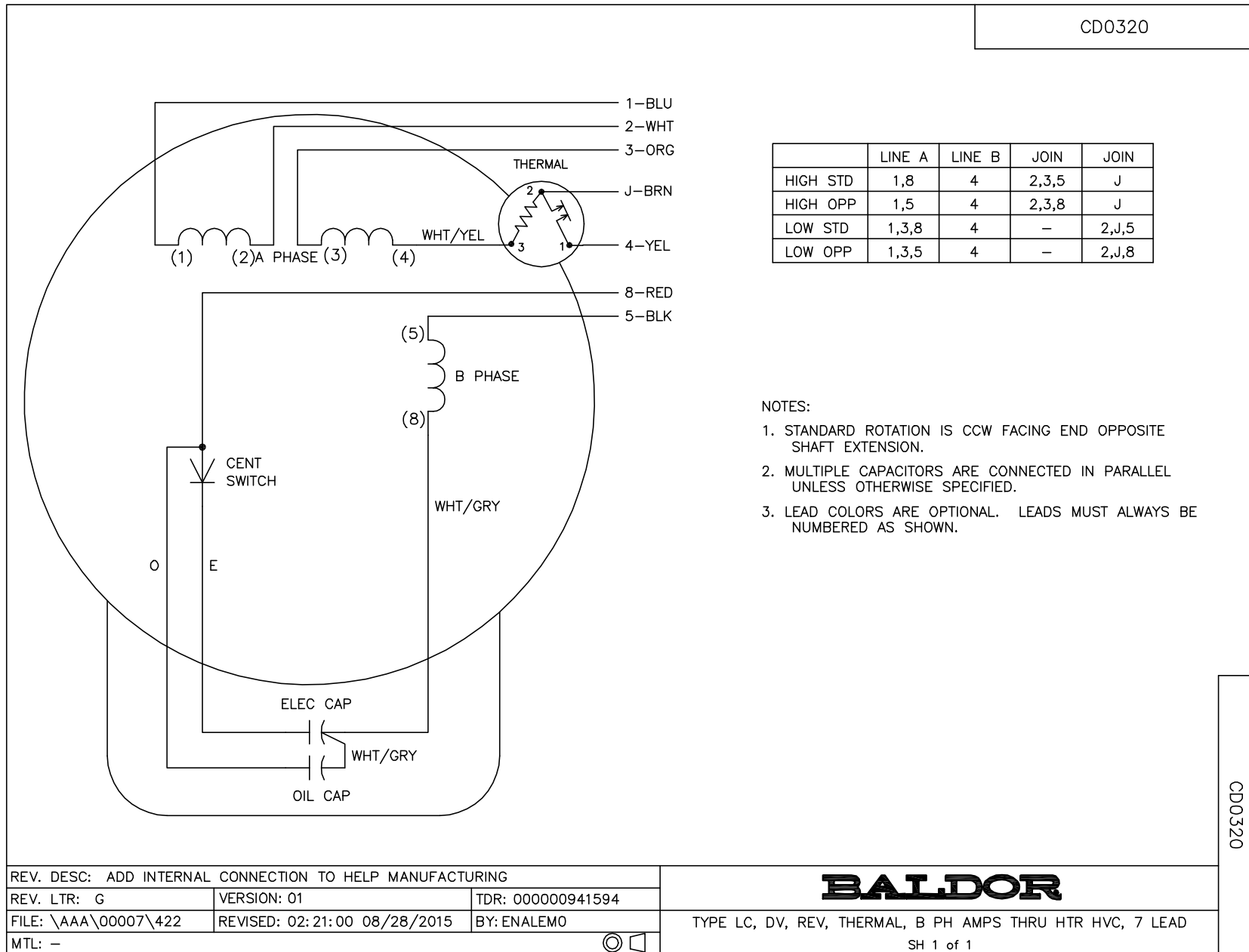
2 HP 1 PH 60 HZ 1725 RPM 115 V 3532LC

TORQUES (LB-FT): PO=13 PU=12.5 LR=15.5 LRA=120





CD0320



	LINE A	LINE B	JOIN	JOIN
HIGH STD	1,8	4	2,3,5	J
HIGH OPP	1,5	4	2,3,8	J
LOW STD	1,3,8	4	-	2,J,5
LOW OPP	1,3,5	4	-	2,J,8

NOTES:

1. STANDARD ROTATION IS CCW FACING END OPPOSITE SHAFT EXTENSION.
2. MULTIPLE CAPACITORS ARE CONNECTED IN PARALLEL UNLESS OTHERWISE SPECIFIED.
3. LEAD COLORS ARE OPTIONAL. LEADS MUST ALWAYS BE NUMBERED AS SHOWN.

CD0320

REV. DESC: ADD INTERNAL CONNECTION TO HELP MANUFACTURING		
REV. LTR: G	VERSION: 01	TDR: 00000941594
FILE: \AAA\00007\422	REVISED: 02:21:00 08/28/2015	BY: ENALEMO
MTL: -		© □

BALDOR

TYPE LC, DV, REV, THERMAL, B PH AMPS THRU HTR HVC, 7 LEAD
SH 1 of 1