



---

# Customer information packet

## L1321T

1.5HP, 1730RPM, 1PH, 60HZ, 145T, 3536L, OPEN, F

Class - None

Division - Not Applicable

## Specifications

Enclosure	OPEN
Frame	145T
Frame Material	Steel
Frequency	60.00 Hz
Haz Area Class and Group	None
Haz Area Division	Not Applicable
Motor Letter Type	Cap Start, Induction Run
Output @ Frequency	1.500 HP @ 60 HZ
Phase	1
Synchronous Speed @ Frequency	1800 RPM @ 60 HZ
Voltage @ Frequency	115.0 V @ 60 HZ 230.0 V @ 60 HZ
Agency Approvals	CSA UR
Ambient Temperature	40 °C
Auxillary Box	No Auxillary Box
Auxillary Box Lead Termination	None
Base Indicator	Rigid
Bearing Grease Type	Polyrex EM (-20F +300F)
Blower	None
Current @ Voltage	15.500 A @ 115.0 V 7.800 A @ 230.0 V 8.300 A @ 208.0 V
Design Code	L
Drip Cover	No Drip Cover
Duty Rating	CONT
Efficiency @ 100% Load	75.5 %
Electrically Isolated Bearing	Not Electrically Isolated
Feedback Device	NO FEEDBACK
Front Shaft Indicator	None
Heater Indicator	No Heater
High Voltage Full Load Amps	7.8 a

## Part detail

Revision	D
Type	AC
Mech. spec.	35DD001
Base	
Status	PRD/A
Elec. spec.	35WGG406
Layout	35LYDD001
Eff. date	07-02-2024
CD Diagram	CD0001
Poles	04
Leads	4#14 A PH,2#18 B PH
Proprietary	False
Created date	08-01-2022

<b>Insulation Class</b>	F
<b>Inverter Code</b>	Not Inverter
<b>KVA Code</b>	M
<b>Lifting Lugs</b>	No Lifting Lugs
<b>Locked Bearing Indicator</b>	No Locked Bearing
<b>Motor Lead Quantity/Wire Size</b>	4 @ 14 AWG, A PH
<b>Motor Lead Termination</b>	Flying Leads
<b>Motor Standards</b>	NEMA
<b>Motor Type</b>	3536L
<b>Mounting Arrangement</b>	F1
<b>Number of Poles</b>	4
<b>Overall Length</b>	14.38 IN
<b>Power Factor</b>	80
<b>Product Family</b>	General Purpose
<b>Pulley End Bearing Type</b>	Ball
<b>Pulley Face Code</b>	Standard
<b>Pulley Shaft Indicator</b>	Standard
<b>Rodent Screen</b>	None
<b>Service Factor</b>	1.15
<b>Shaft Diameter</b>	0.875 IN
<b>Shaft Ground Indicator</b>	No Shaft Grounding
<b>Shaft Rotation</b>	Reversible
<b>Shaft Slinger Indicator</b>	No Slinger
<b>Speed</b>	1730 rpm
<b>Speed Code</b>	Single Speed
<b>Starting Method</b>	Direct on line
<b>Thermal Device - Bearing</b>	None
<b>Thermal Device - Winding</b>	None
<b>Vibration Sensor Indicator</b>	No Vibration Sensor
<b>Winding Thermal 1</b>	None
<b>Winding Thermal 2</b>	None

**Nameplate**

<b>NP1256L</b>									
<b>CAT.NO.</b>	L1321T								
<b>SPEC.</b>	35DD001G406								
<b>HP</b>	1.5								
<b>VOLTS</b>	115/230								
<b>AMP</b>	15.5/7.8								
<b>RPM</b>	1730								
<b>FRAME</b>	145T		<b>HZ</b>	60		<b>PH</b>	1		
<b>SER.F.</b>	1.15	<b>CODE</b>	M	<b>DES</b>	L	<b>CLASS</b>	F		
<b>NEMA-NOM-EFF</b>	75.5	<b>PF</b>	80						
<b>RATING</b>	40C AMB-CONT								
<b>CC</b>									
<b>DE</b>	6205		<b>ODE</b>	6203					
<b>ENCL</b>	OPEN	<b>SN</b>							

**Accessories**

<b>Part number</b>	<b>Description</b>	<b>Multiplier</b>
35-8764	C FACE KIT	A8
35EP1604A01SP	D-FLANGE KIT	A8

**AC Induction Motor Performance Data**

Record # 89156

Typical performance - not guaranteed values

Winding: 35WGG406-R001		Type: 3536L	Enclosure: OPEN	
<b>Nameplate Data</b>			<b>115 V, 60 Hz: Low Voltage Connection</b>	
Rated Output (HP)	1.5	Full Load Torque	4.56 LB-FT	
Volts	115/230	Start Configuration	direct on line	
Full Load Amps	15.5/7.8	Breakdown Torque	9.82 LB-FT	
R.P.M.	1730	Pull-up Torque	9.83 LB-FT	
Hz	60 Phase	1	Locked-rotor Torque	14.77 LB-FT
NEMA Design Code	L KVA Code	M	Starting Current	100 A
Service Factor (S.F.)	1.15	No-load Current	10.35 A	
NEMA Nom. Eff.	75.5 Power Factor	80	Line-line Res. @ 25°C	0.446 Ω A Ph 1.18 Ω B Ph
Rating - Duty	40C AMB-CONT	Temp. Rise @ Rated Load	82°C	
S.F. Amps		Temp. Rise @ S.F. Load	101°C	
		Locked-rotor Power Factor	90.9	
		Rotor inertia	0.261 lb-ft <sup>2</sup>	

**Load Characteristics 115 V, 60 Hz, 1.5 HP**

% of Rated Load	25	50	75	100	125	150	S.F.
Power Factor	42	62	73	81	83	85	82
Efficiency	66.2	75.9	78.2	77.1	73.2	67.7	74.8
Speed	1782	1767	1748	1728	1697	1658	1709
Line amperes	8.89	10.27	12.73	15.64	19.99	25.47	18.2

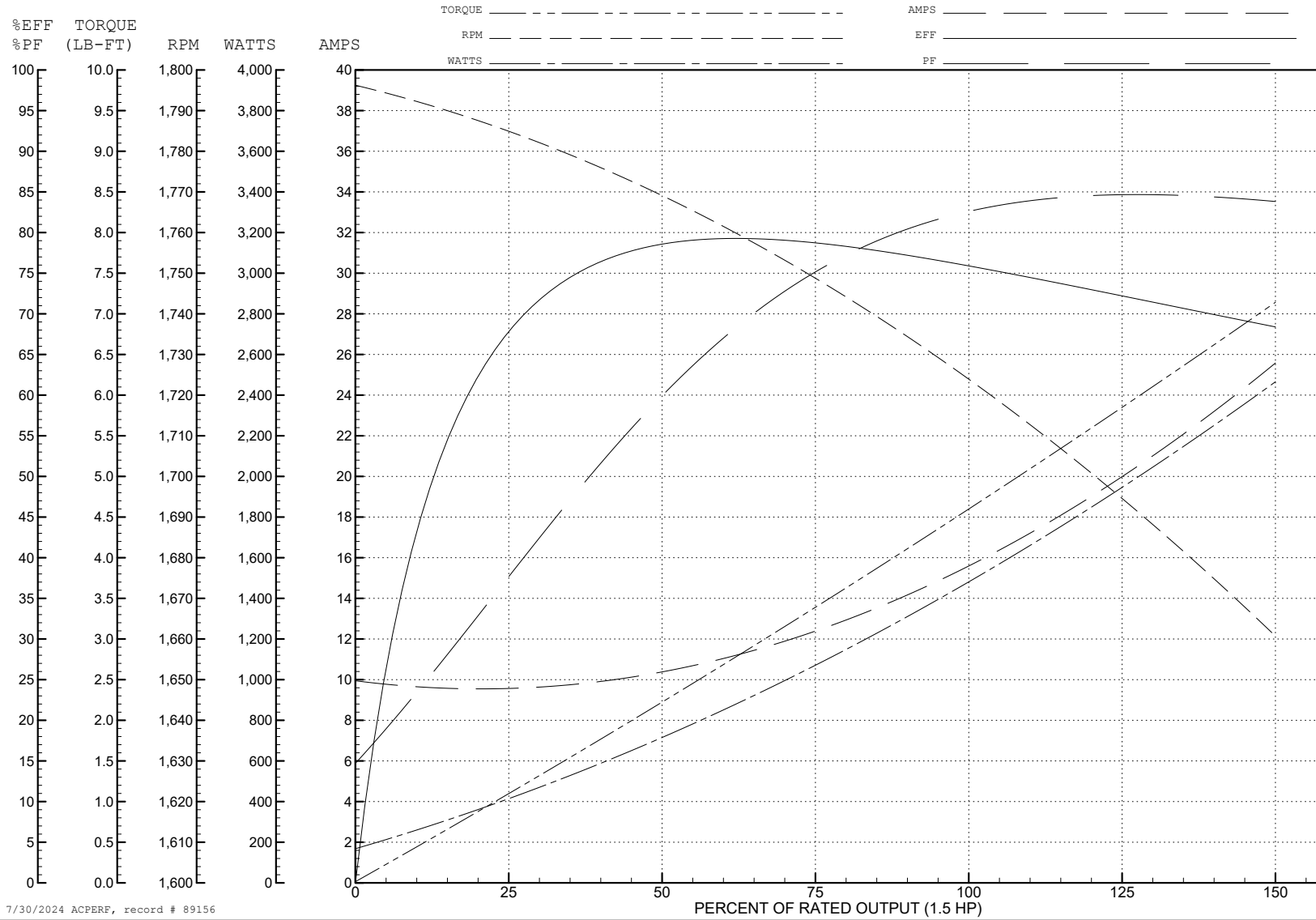
ABB Motors and Mechanical Inc.

WINDING # 35WGG406

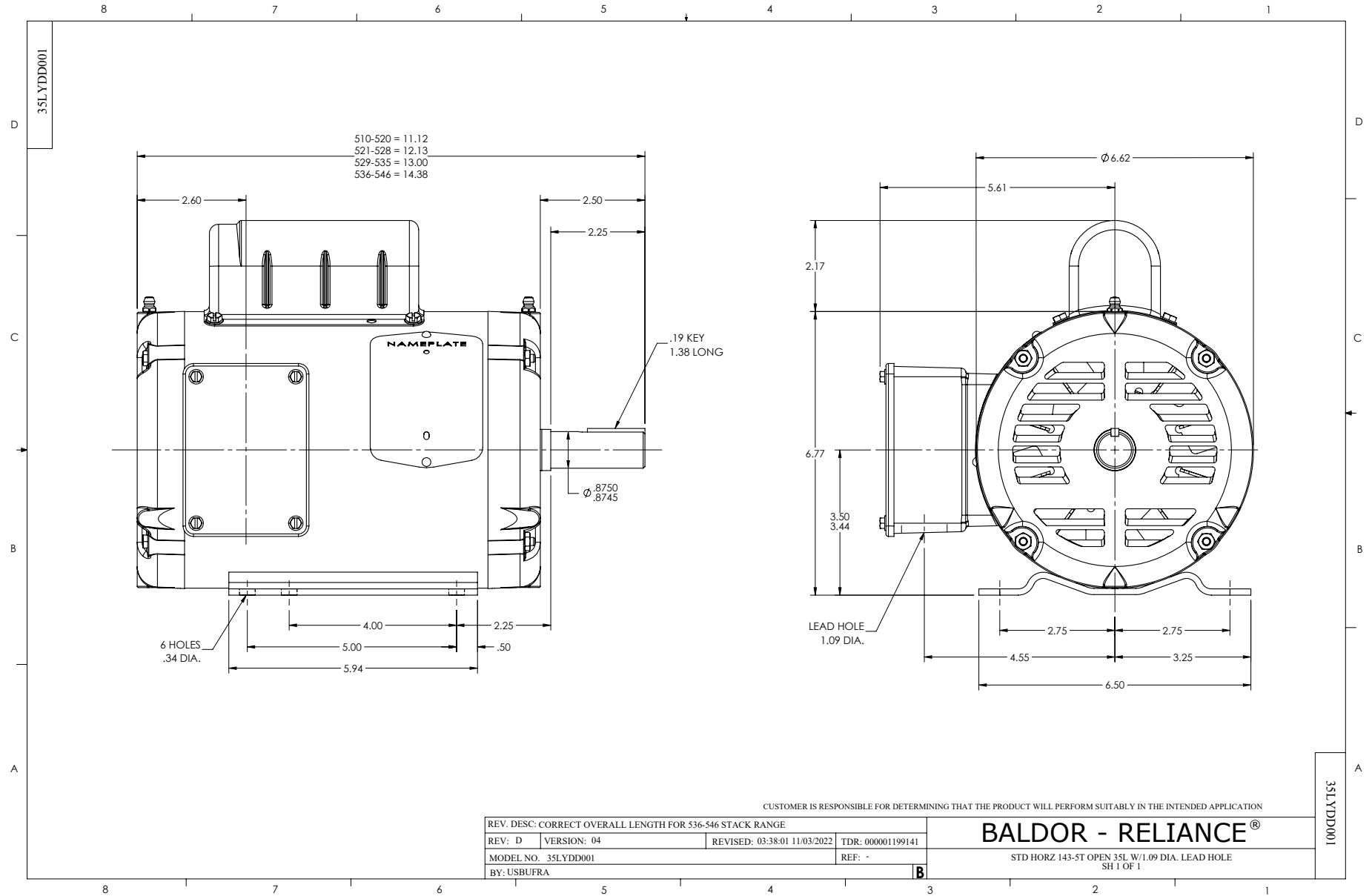
Typical performance - not guaranteed values.

1.5 HP 1 PH 60 HZ 1730 RPM 115 V 3536L

TORQUES (LB-FT): PO=9.82 PU=9.83 LR=14.77 LRA=100

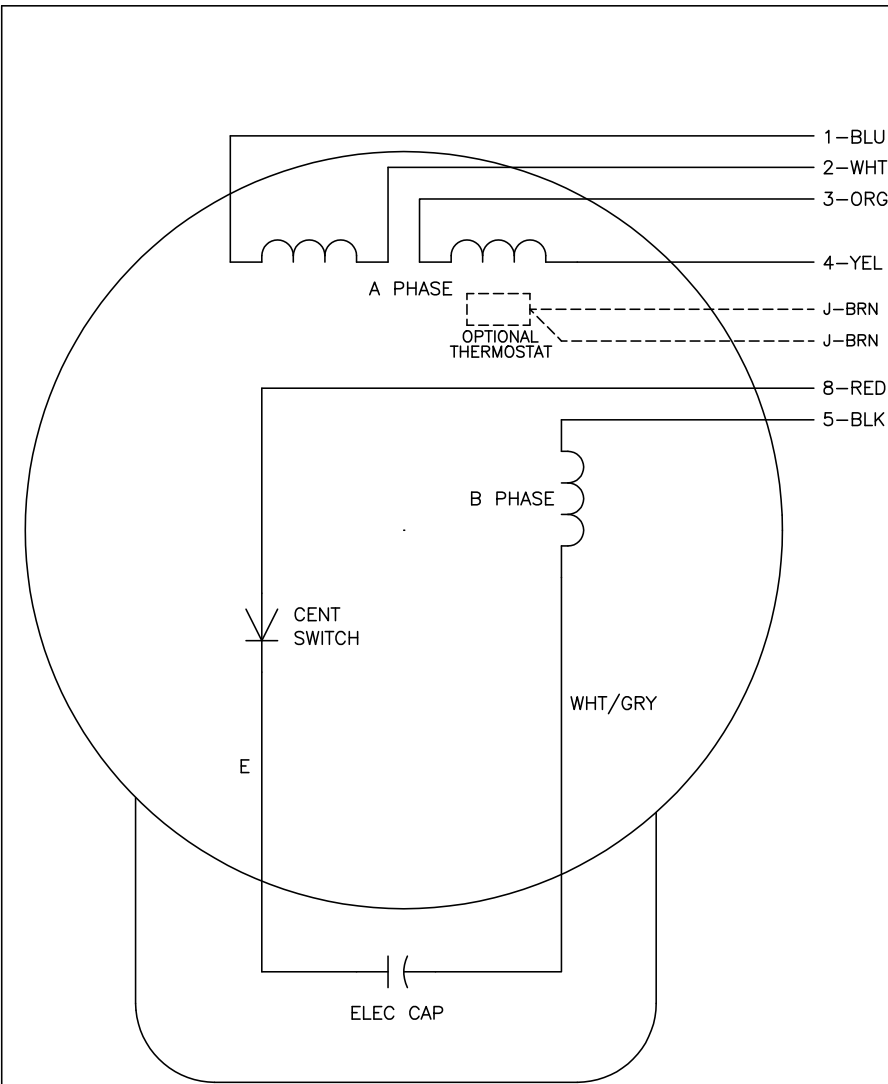


7/30/2024 ACPERF, record # 89156





CD0001



	LINE A	LINE B	JOIN
HIGH STD	1	4,5	2,3,8
HIGH OPP	1	4,8	2,3,5
LOW STD	1,3,8	2,4,5	-
LOW OPP	1,3,5	2,4,8	-

**NOTES:**

1. STANDARD ROTATION IS CCW FACING END OPPOSITE SHAFT EXTENSION.
2. OPTIONAL THERMOSTAT IS PROVIDED WHEN SPECIFIED.
3. MULTIPLE CAPACITORS ARE CONNECTED IN PARALLEL UNLESS OTHERWISE SPECIFIED.
4. LEAD COLORS ARE OPTIONAL. LEADS MUST ALWAYS BE NUMBERED AS SHOWN.

CD0001

REV. DESC: REVISE TO SHOW OPTIONAL COLORS			
REV. LTR: D	BY: JLP	REVISED: 04/08/99 1:16	TDR: 0178636
100000		FILE: AAA00007405	MDL: -
		MTL: -	

**BALDOR ELECTRIC Co.**

TYPE L, DV, REV, 6 LEADS