



---

# Customer information packet

## L1320T

2HP, 3450RPM, 1PH, 60HZ, 3528LC, N

Class - None

Division - Not Applicable

## Specifications

Enclosure	OPEN
Frame	143T
Frame Material	Steel
Frequency	60.00 Hz
Haz Area Class and Group	None
Haz Area Division	Not Applicable
Motor Letter Type	Cap Start, Cap Run
Output @ Frequency	2.000 HP @ 60 HZ
Phase	1
Synchronous Speed @ Frequency	3600 RPM @ 60 HZ
Voltage @ Frequency	115.0 V @ 60 HZ 230.0 V @ 60 HZ
Agency Approvals	UR CSA
Ambient Temperature	40 °C
Auxillary Box	No Auxillary Box
Auxillary Box Lead Termination	None
Base Indicator	Rigid
Bearing Grease Type	Polyrex EM (-20F +300F)
Blower	None
Current @ Voltage	11.500 A @ 230.0 V 12.000 A @ 208.0 V 23.000 A @ 115.0 V
Design Code	L
Drip Cover	No Drip Cover
Duty Rating	CONT
Efficiency @ 100% Load	71.0 %
Electrically Isolated Bearing	Not Electrically Isolated
Feedback Device	NO FEEDBACK
Front Face Code	Standard
Front Shaft Indicator	None
Heater Indicator	No Heater

## Part detail

Revision	K
Type	AC
Mech. spec.	35Y525
Base	
Status	PRD/A
Elec. spec.	35WG1639
Layout	35LYY525
Eff. date	05-08-2024
CD Diagram	CD0016A01
Poles	02
Leads	4#14 A PH,3#18 B PH
Proprietary	False
Created date	12-07-2009

High Voltage Full Load Amps	11.5 a
Insulation Class	B
Inverter Code	Not Inverter
KVA Code	H
Lifting Lugs	No Lifting Lugs
Locked Bearing Indicator	No Locked Bearing
Motor Lead Exit	Ko Box
Motor Lead Quantity/Wire Size	4 @ 14 AWG, A PH
Motor Lead Termination	Flying Leads
Motor Standards	NEMA
Motor Type	3528LC
Mounting Arrangement	F1
Number of Poles	2
Overall Length	12.13 IN
Power Factor	75
Product Family	General Purpose
Pulley End Bearing Type	Ball
Pulley Face Code	Standard
Pulley Shaft Indicator	Standard
Rodent Screen	None
RoHS Status	ROHS COMPLIANT
Service Factor	1.15
Shaft Diameter	0.875 IN
Shaft Extension Location	Pulley End
Shaft Ground Indicator	No Shaft Grounding
Shaft Rotation	Reversible
Shaft Slinger Indicator	No Slinger
Speed	3450 rpm
Speed Code	Single Speed
Starting Method	Direct on line
Thermal Device - Bearing	None
Thermal Device - Winding	None
Vibration Sensor Indicator	No Vibration Sensor
Winding Thermal 1	None

Winding Thermal 2

None

---

## Nameplate

NP1256L									
CAT.NO.	L1320T								
SPEC.	35Y525-1639G1								
HP	2								
VOLTS	115/230								
AMP	23/11.5								
RPM	3450								
FRAME	143T		HZ	60			PH	1	
SER.F.	1.15	CODE	H	DES	L	CLASS	B		
NEMA-NOM-EFF	71	PF	75						
RATING	40C AMB-CONT								
CC									
DE	6205		ODE	6203					
ENCL	OPEN	SN							

**Accessories**

<b>Part number</b>	<b>Description</b>	<b>Multiplier</b>
35-8764	C FACE KIT	A8
35EP1604A01SP	D-FLANGE KIT	A8

## AC Induction Motor Performance Data

Record # 8155

Typical performance - not guaranteed values

Winding: 35WG1639-R001			Type: 3528LC		Enclosure: OPEN		
Nameplate Data			230 V, 60 Hz: High Voltage Connection				
Rated Output (HP)		2	Full Load Torque		3 LB-FT		
Volts		115/230	Start Configuration		direct on line		
Full Load Amps		23/11.5	Breakdown Torque		10.5 LB-FT		
R.P.M.		3450	Pull-up Torque		8.8 LB-FT		
Hz	60	Phase	1	Locked-rotor Torque		9.9 LB-FT	
NEMA Design Code		L	KVA Code	H	Starting Current		83 A
Service Factor (S.F.)		1.15		No-load Current		8.1 A	
NEMA Nom. Eff.		71	Power Factor	75	Line-line Res. @ 25°C		0.844 Ω A Ph 0.918 Ω B Ph
Rating - Duty		40C AMB-CONT		Temp. Rise @ Rated Load		45°C	
S.F. Amps				Temp. Rise @ S.F. Load		49°C	

## Load Characteristics 230 V, 60 Hz, 2 HP

% of Rated Load	25	50	75	100	125	150	S.F.
Power Factor	40	56	65	75	80	84	78
Efficiency	50	65	73	74	75	74	74.6
Speed	3574	3552	3533	3506	3482	3451	3492
Line amperes	8.6	9.6	10.5	12	13.6	15.7	12.96

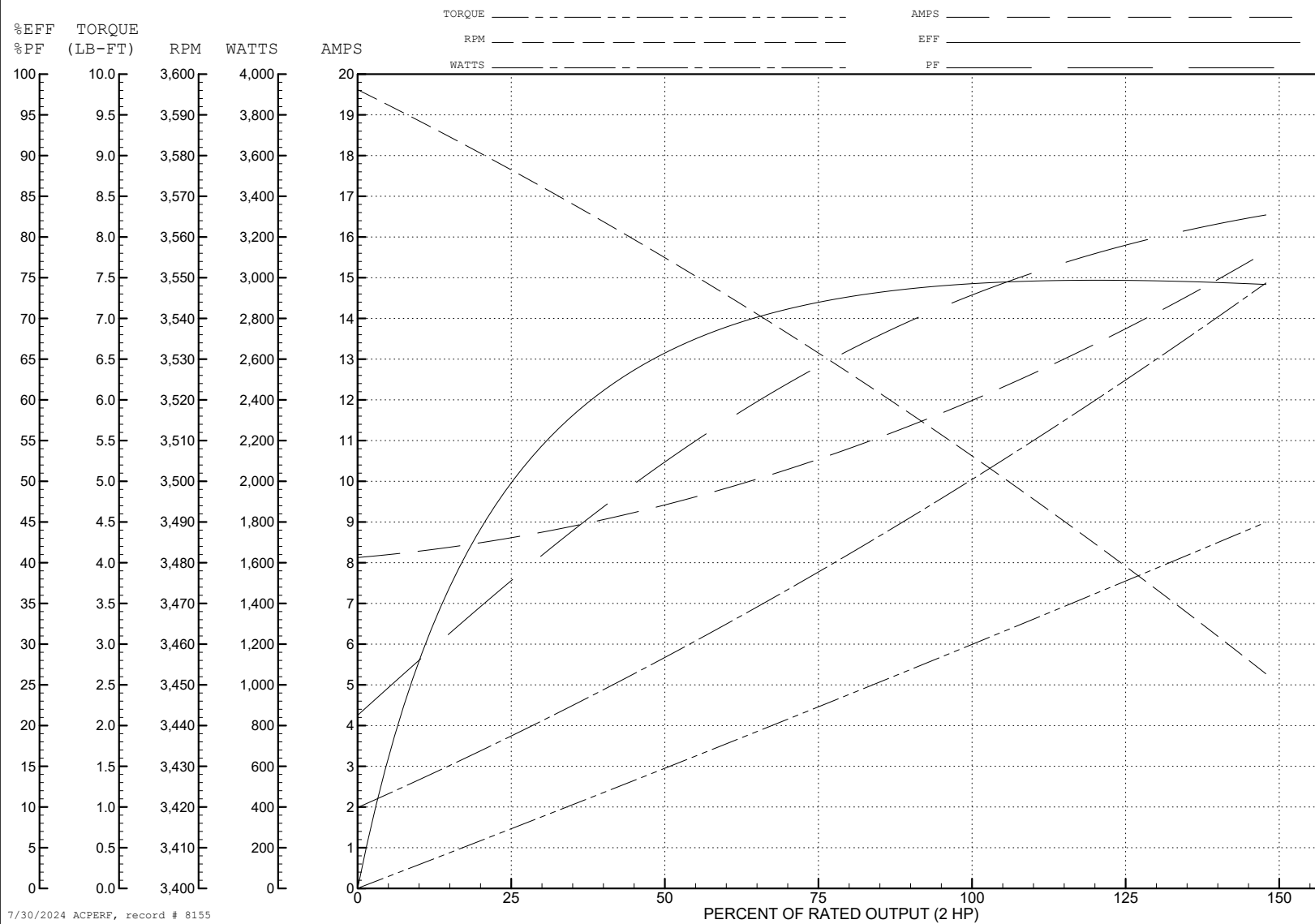
ABB Motors and Mechanical Inc.

WINDING # 35WG1639

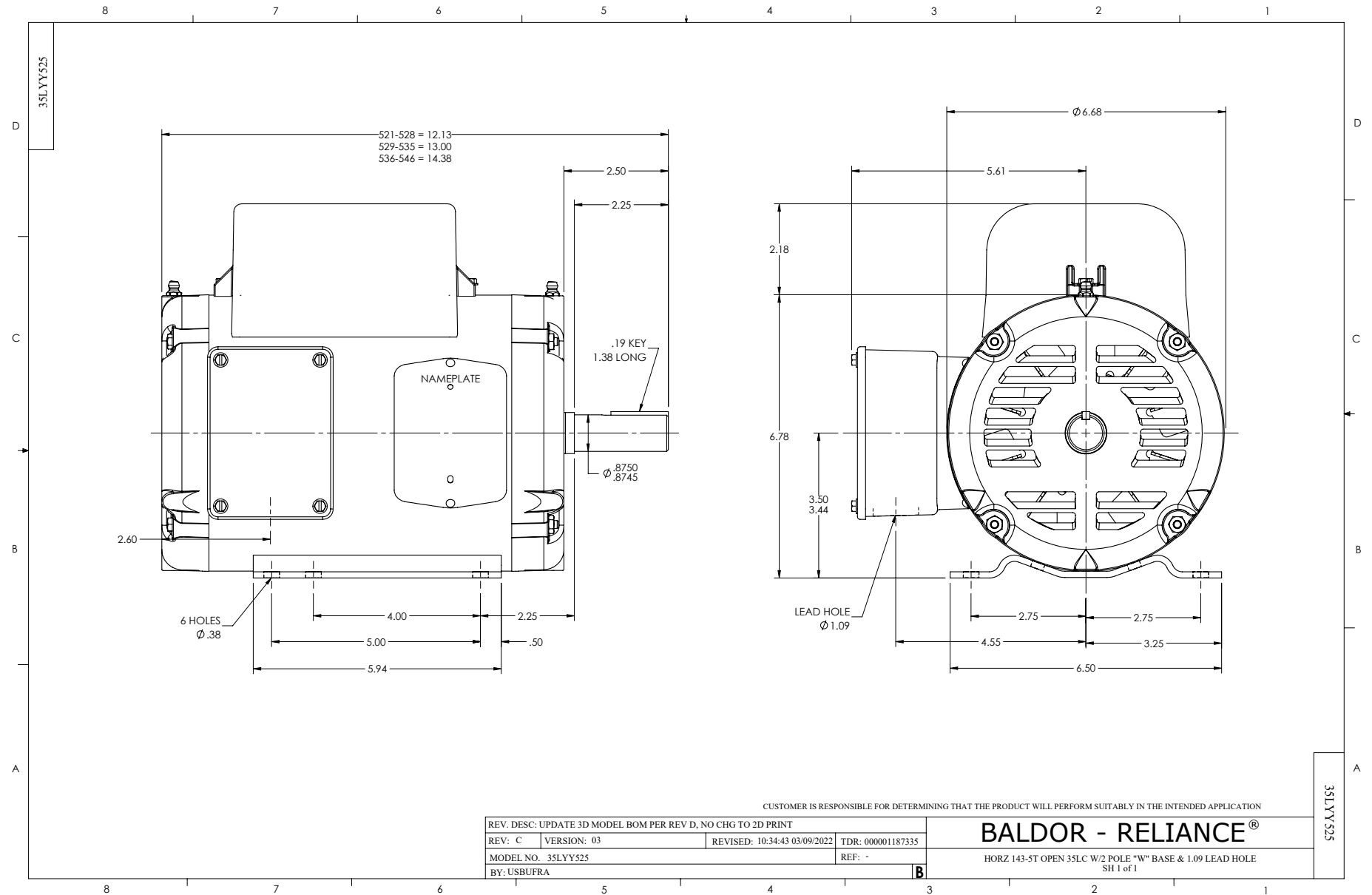
Typical performance - not guaranteed values.

2 HP 1 PH 60 HZ 3450 RPM 230 V 3528LC

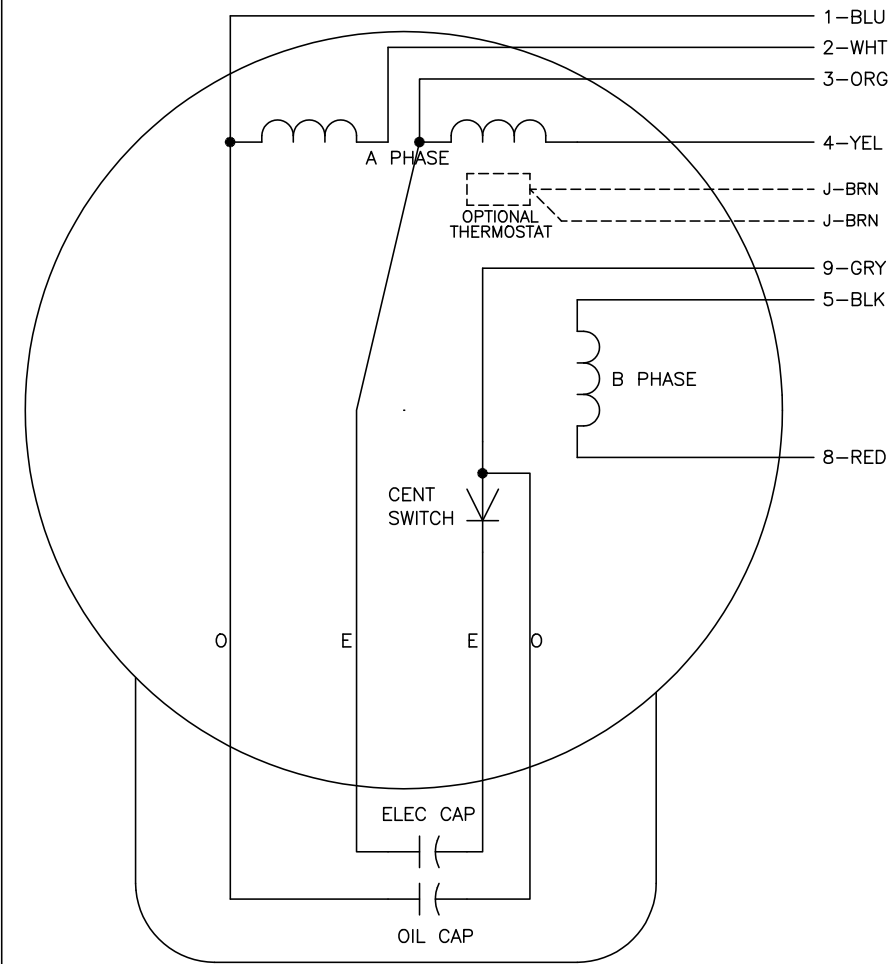
TORQUES (LB-FT): PO=10.5 PU=8.8 LR=9.9 LRA=83







CD0016A01



	LINE A	LINE B	JOIN	JOIN
HIGH STD	1	4,5	2,3	8,9
HIGH OPP	1	4,8	2,3	5,9
LOW STD	1,3	2,4,5	8,9	—
LOW OPP	1,3	2,4,8	5,9	—

- NOTES:
1. STANDARD ROTATION IS CCW FACING END OPPOSITE SHAFT EXTENSION.
  2. OPTIONAL THERMOSTAT IS PROVIDED WHEN SPECIFIED.
  3. MULTIPLE CAPACITORS ARE CONNECTED IN PARALLEL UNLESS OTHERWISE SPECIFIED.
  4. LEAD COLORS ARE OPTIONAL. LEADS MUST ALWAYS BE NUMBERED AS SHOWN.

REV. DESC: REVISE TO SHOW OPTIONAL COLORS			
REV. LTR: E	BY: JLP	REVISED: 04/09/99 1:19	TDR: 0178636
10A9100D0		FILE: AAA00007410	MDL: —
		MTL: —	

BALDOR ELECTRIC Co.

TYPE LC, DV, REV, OIL CAP ACR. LINE, 7 LEADS

CD0016A01