



Customer information packet

L1319T

1.5HP, 1740RPM, 1PH, 60HZ, 145T, 3528L, OPEN, F

Class - None

Division - Not Applicable

Specifications

Enclosure	OPEN
Frame	145T
Frame Material	Steel
Frequency	60.00 Hz
Haz Area Class and Group	None
Haz Area Division	Not Applicable
Motor Letter Type	Cap Start, Induction Run
Output @ Frequency	1.500 HP @ 60 HZ
Phase	1
Synchronous Speed @ Frequency	1800 RPM @ 60 HZ
Voltage @ Frequency	115.0 V @ 60 HZ 230.0 V @ 60 HZ
Agency Approvals	CSA UR
Ambient Temperature	40 °C
Auxillary Box	No Auxillary Box
Auxillary Box Lead Termination	None
Base Indicator	Rigid
Bearing Grease Type	Polyrex EM (-20F +300F)
Blower	None
Current @ Voltage	18.600 A @ 115.0 V 9.200 A @ 208.0 V 9.300 A @ 230.0 V
Design Code	L
Drip Cover	No Drip Cover
Duty Rating	CONT
Efficiency @ 100% Load	66.0 %
Electrically Isolated Bearing	Not Electrically Isolated
Feedback Device	NO FEEDBACK
Front Shaft Indicator	None
Heater Indicator	No Heater
High Voltage Full Load Amps	9.3 a

Part detail

Revision	C
Type	AC
Mech. spec.	35DD001
Base	
Status	PRD/A
Elec. spec.	35WGG408
Layout	35LYDD001
Eff. date	07-02-2024
CD Diagram	CD0001
Poles	04
Leads	4#16 A PH,2#18 B PH Y
Proprietary	False
Created date	02-23-2023

Insulation Class	F
Inverter Code	Not Inverter
KVA Code	K
Lifting Lugs	No Lifting Lugs
Locked Bearing Indicator	No Locked Bearing
Motor Lead Quantity/Wire Size	4 @ 16 AWG, A PH
Motor Lead Termination	Flying Leads
Motor Standards	NEMA
Motor Type	3528L
Mounting Arrangement	F1
Number of Poles	4
Overall Length	12.13 IN
Power Factor	78
Product Family	General Purpose
Pulley End Bearing Type	Ball
Pulley Face Code	Standard
Pulley Shaft Indicator	Standard
Rodent Screen	None
Service Factor	1.15
Shaft Diameter	0.875 IN
Shaft Ground Indicator	No Shaft Grounding
Shaft Rotation	Reversible
Shaft Slinger Indicator	No Slinger
Speed	1740 rpm
Speed Code	Single Speed
Starting Method	Direct on line
Thermal Device - Bearing	None
Thermal Device - Winding	None
Vibration Sensor Indicator	No Vibration Sensor
Winding Thermal 1	None
Winding Thermal 2	None

Nameplate

NP1256L									
CAT.NO.	L1319T								
SPEC.	35DD001G408								
HP	1.5								
VOLTS	115/230								
AMP	18.6/9.3								
RPM	1740								
FRAME	145T		HZ	60		PH	1		
SER.F.	1.15	CODE	K	DES	L	CLASS	F		
NEMA-NOM-EFF	66	PF	78						
RATING	40C AMB-CONT								
CC									
DE	6205		ODE	6203					
ENCL	OPEN	SN							

Accessories

Part number	Description	Multiplier
35-8764	C FACE KIT	A8
35EP1604A01SP	D-FLANGE KIT	A8

AC Induction Motor Performance Data

Record # 89158

Typical performance - not guaranteed values

Winding: 35WGG408-R001		Type: 3528L	Enclosure: OPEN	
Nameplate Data			115 V, 60 Hz: Low Voltage Connection	
Rated Output (HP)	1.5	Full Load Torque	4.49 LB-FT	
Volts	115/230	Start Configuration	direct on line	
Full Load Amps	18.6/9.3	Breakdown Torque	11.26 LB-FT	
R.P.M.	1740	Pull-up Torque	10.23 LB-FT	
Hz	60 Phase	1	Locked-rotor Torque	14.53 LB-FT
NEMA Design Code	L KVA Code	K	Starting Current	116 A
Service Factor (S.F.)	1.15	No-load Current	12.73 A	
NEMA Nom. Eff.	66 Power Factor	78	Line-line Res. @ 25°C	0.503 Ω A Ph 1.14 Ω B Ph
Rating - Duty	40C AMB-CONT	Temp. Rise @ Rated Load	59°C	
S.F. Amps		Temp. Rise @ S.F. Load	68°C	
		Locked-rotor Power Factor	94.9	
		Rotor inertia	0.203 lb-ft ²	

Load Characteristics 115 V, 60 Hz, 1.5 HP

% of Rated Load	25	50	75	100	125	150	S.F.
Power Factor	39	56	70	78	85	87	82
Efficiency	48.4	62.7	64.3	66.8	65.1	64	65.8
Speed	1791	1782	1768	1742	1726	1698	1732
Line amperes	13.16	14.14	16.31	18.62	21.62	25.38	20.4

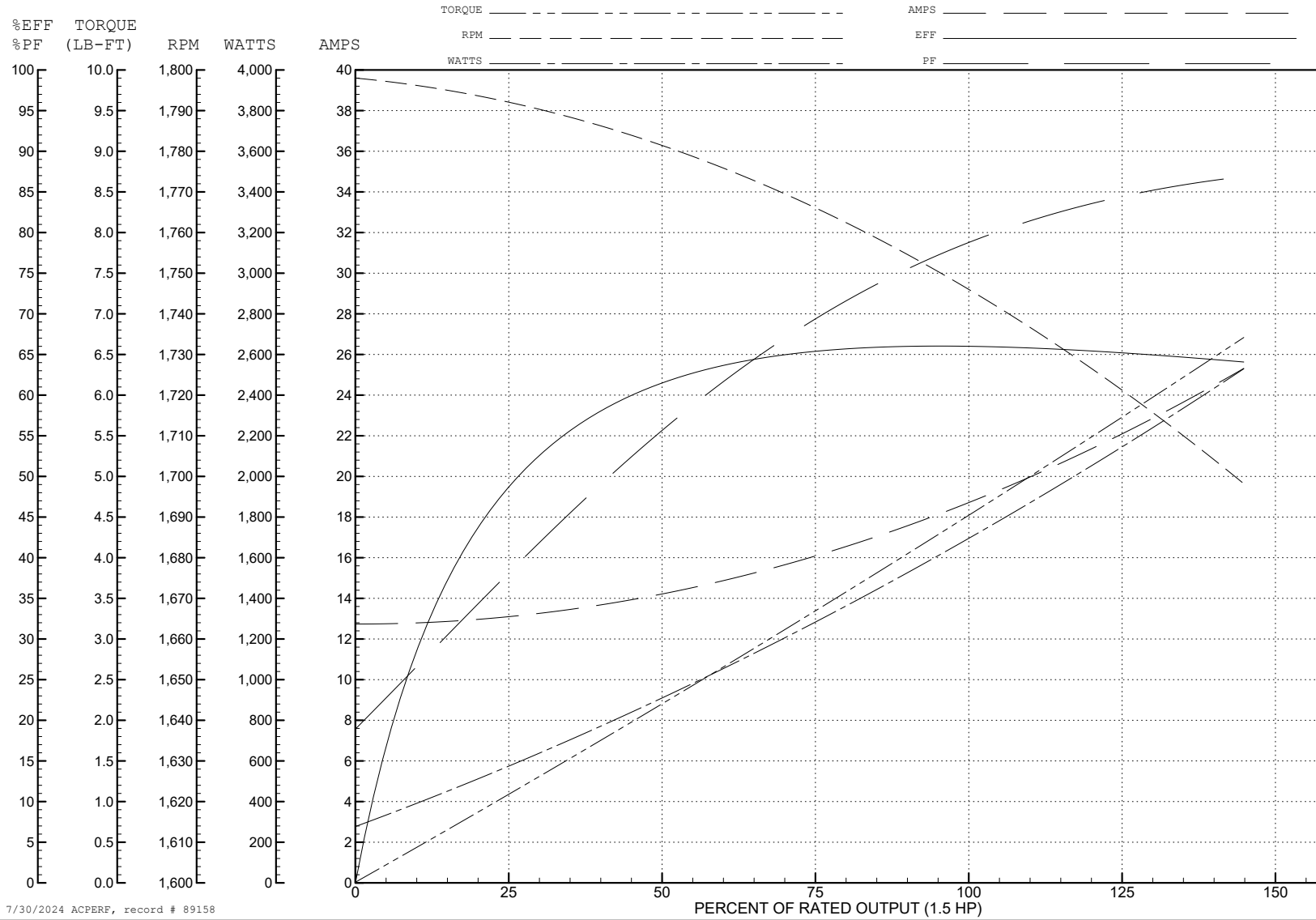
ABB Motors and Mechanical Inc.

WINDING # 35WGG408

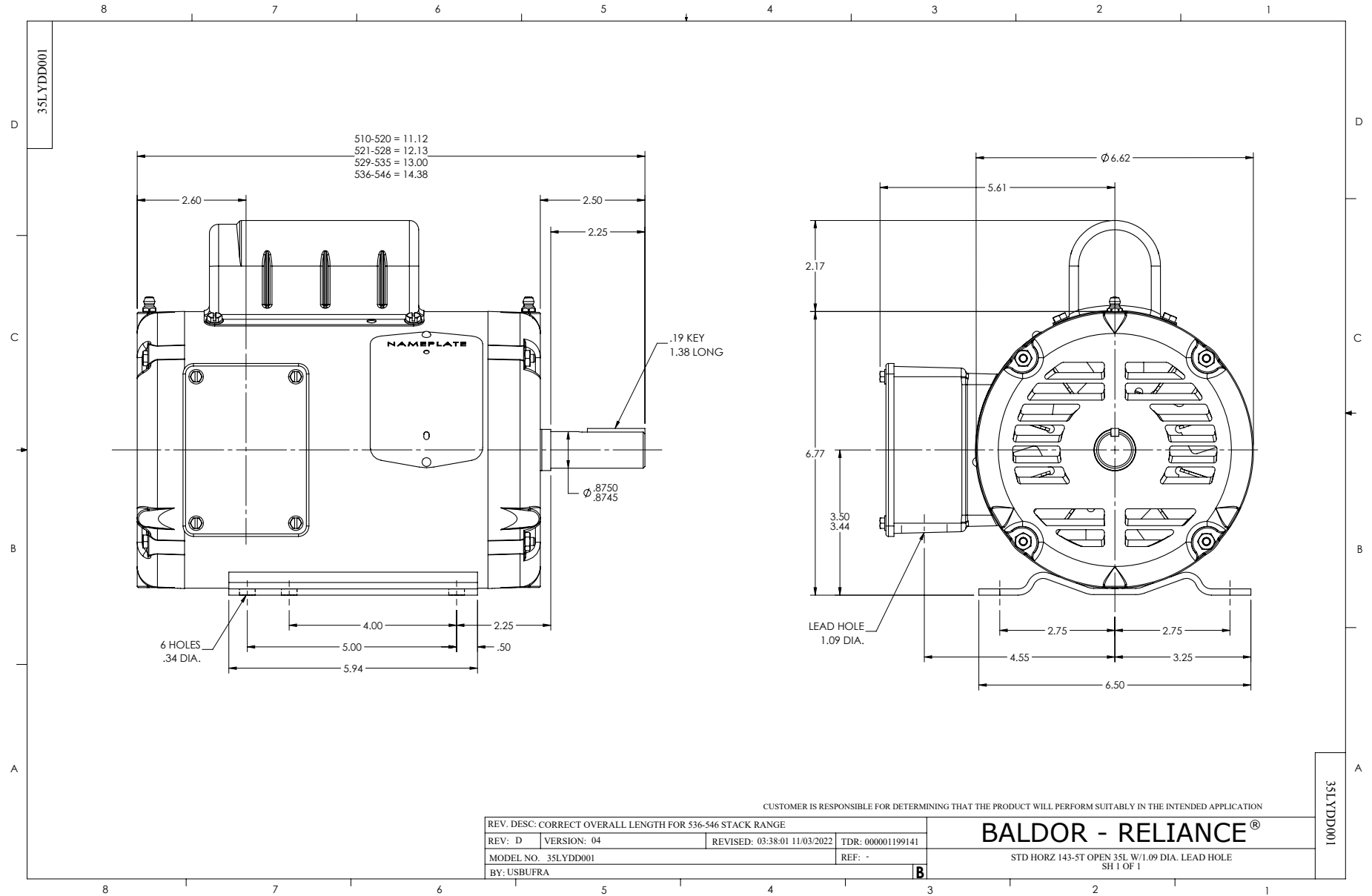
Typical performance - not guaranteed values.

1.5 HP 1 PH 60 HZ 1740 RPM 115 V 3528L

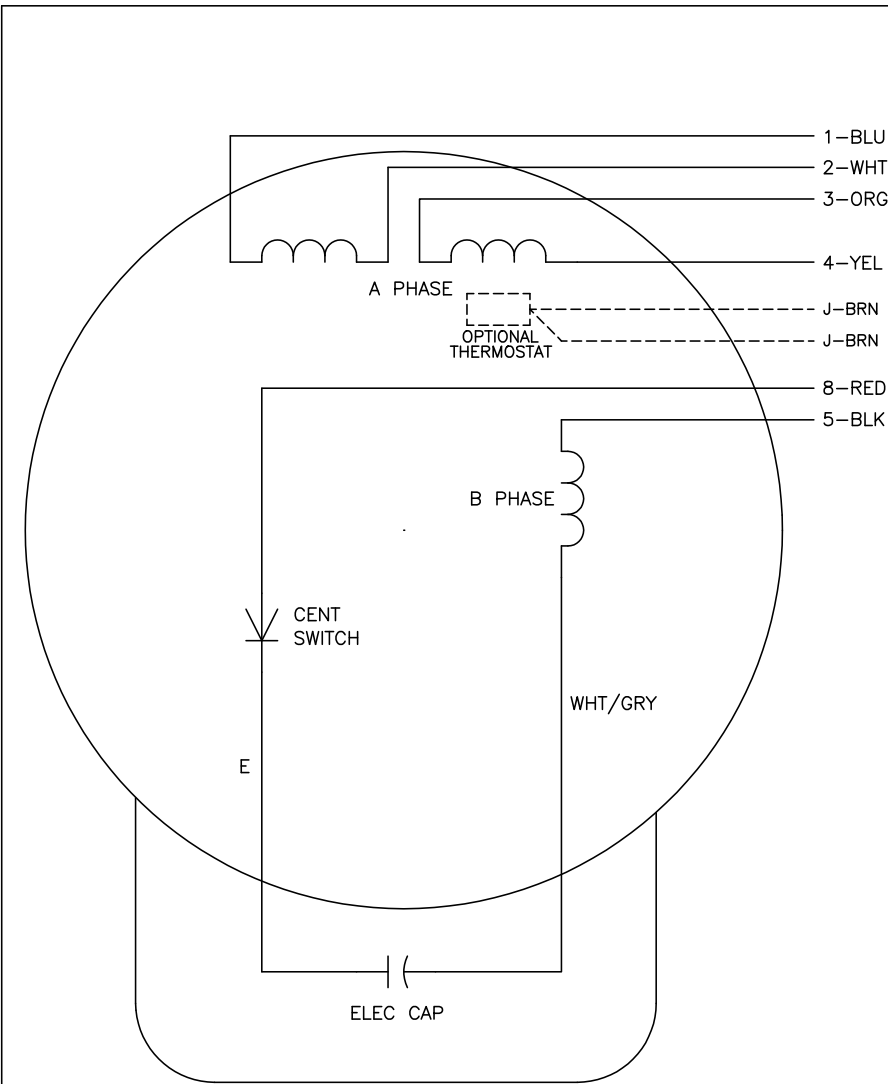
TORQUES (LB-FT): PO=11.26 PU=10.23 LR=14.53 LRA=116



7/30/2024 ACPERF, record # 89158



CD0001



	LINE A	LINE B	JOIN
HIGH STD	1	4,5	2,3,8
HIGH OPP	1	4,8	2,3,5
LOW STD	1,3,8	2,4,5	-
LOW OPP	1,3,5	2,4,8	-

NOTES:

1. STANDARD ROTATION IS CCW FACING END OPPOSITE SHAFT EXTENSION.
2. OPTIONAL THERMOSTAT IS PROVIDED WHEN SPECIFIED.
3. MULTIPLE CAPACITORS ARE CONNECTED IN PARALLEL UNLESS OTHERWISE SPECIFIED.
4. LEAD COLORS ARE OPTIONAL. LEADS MUST ALWAYS BE NUMBERED AS SHOWN.

REV. DESC: REVISE TO SHOW OPTIONAL COLORS			
REV. LTR: D	BY: JLP	REVISED: 04/08/99 1:16	TDR: 0178636
100000		FILE: AAA00007405	MDL: -
		MTL: -	

BALDOR ELECTRIC Co.

TYPE L, DV, REV, 6 LEADS

CD0001