

**BALDOR • RELIANCE**

---

# Customer information packet

## L1318TM

1HP, 1725RPM, 1PH, 60HZ, 143T, 3528L, OPEN, F1

Class - None

Division - Not Applicable

## Specifications

Enclosure	OPEN
Frame	143T
Frame Material	Steel
Frequency	60.00 Hz
Haz Area Class and Group	None
Haz Area Division	Not Applicable
Motor Letter Type	Cap Start, Induction Run
Output @ Frequency	1.000 HP @ 60 HZ
Phase	1
Synchronous Speed @ Frequency	1800 RPM @ 60 HZ
Voltage @ Frequency	115.0 V @ 60 HZ 230.0 V @ 60 HZ
Agency Approvals	UR CSA
Ambient Temperature	40 °C
Auxillary Box	No Auxillary Box
Auxillary Box Lead Termination	None
Base Indicator	Rigid
Bearing Grease Type	Polyrex EM (-20F +300F)
Blower	None
Current @ Voltage	12.400 A @ 115.0 V 6.200 A @ 230.0 V
Design Code	L
Drip Cover	No Drip Cover
Duty Rating	CONT
Efficiency @ 100% Load	67.0 %
Electrically Isolated Bearing	Not Electrically Isolated
Feedback Device	NO FEEDBACK
Front Face Code	Standard
Front Shaft Indicator	None
Heater Indicator	No Heater
High Voltage Full Load Amps	6.2 a

## Part detail

Revision	Q
Type	AC
Mech. spec.	35DD001
Base	
Status	PRD/A
Elec. spec.	35WG0602
Layout	35LYDD001
Eff. date	05-07-2024
CD Diagram	CD0008
Poles	04
Leads	6#18,1#14 #4TH
Proprietary	False
Created date	12-21-2009

<b>Insulation Class</b>	F
<b>Inverter Code</b>	Not Inverter
<b>KVA Code</b>	K
<b>Lifting Lugs</b>	No Lifting Lugs
<b>Locked Bearing Indicator</b>	No Locked Bearing
<b>Motor Lead Exit</b>	Ko Box
<b>Motor Lead Quantity/Wire Size</b>	6 @ 18 AWG
<b>Motor Lead Termination</b>	Flying Leads
<b>Motor Standards</b>	NEMA
<b>Motor Type</b>	3528L
<b>Mounting Arrangement</b>	F1
<b>Number of Poles</b>	4
<b>Overall Length</b>	12.13 IN
<b>Power Factor</b>	68
<b>Product Family</b>	General Purpose
<b>Pulley End Bearing Type</b>	Ball
<b>Pulley Face Code</b>	Standard
<b>Pulley Shaft Indicator</b>	Standard
<b>Rodent Screen</b>	None
<b>Service Factor</b>	1.00
<b>Shaft Diameter</b>	0.875 IN
<b>Shaft Extension Location</b>	Pulley End
<b>Shaft Ground Indicator</b>	No Shaft Grounding
<b>Shaft Rotation</b>	Reversible
<b>Shaft Slinger Indicator</b>	No Slinger
<b>Speed</b>	1725 rpm
<b>Speed Code</b>	Single Speed
<b>Starting Method</b>	Direct on line
<b>Thermal Device - Bearing</b>	None
<b>Thermal Device - Winding</b>	Do Not Use
<b>Vibration Sensor Indicator</b>	No Vibration Sensor
<b>Winding Thermal 1</b>	Manual Thermal Overload
<b>Winding Thermal 1 Location</b>	SB
<b>Winding Thermal 2</b>	None

**Nameplate**

<b>NP1257L</b>									
<b>CAT.NO.</b>	L1318TM								
<b>SPEC.</b>	35DD001-0602								
<b>HP</b>	1								
<b>VOLTS</b>	115/230								
<b>AMP</b>	12.4/6.2								
<b>RPM</b>	1725								
<b>FRAME</b>	143T		<b>HZ</b>	60		<b>PH</b>	1		
<b>SER.F.</b>	1.00	<b>CODE</b>	K	<b>DES</b>	L	<b>CL</b>	F		
<b>NEMA-NOM-EFF</b>	67	<b>PF</b>	68						
<b>RATING</b>	40C AMB-CONT								
<b>CC</b>									
<b>DE</b>	6205	<b>ODE</b>	6203						
<b>ENCL</b>	OPEN	<b>SN</b>							

**Accessories**

<b>Part number</b>	<b>Description</b>	<b>Multiplier</b>
35-8764	C FACE KIT	A8
35EP1604A01SP	D-FLANGE KIT	A8

**AC Induction Motor Performance Data**

Record # 61624

Typical performance - not guaranteed values

Winding: 35WG0602-R002		Type: 3528L	Enclosure: OPEN	
<b>Nameplate Data</b>			<b>115 V, 60 Hz: Low Voltage Connection</b>	
Rated Output (HP)	1	Full Load Torque	3 LB-FT	
Volts	115/230	Start Configuration	direct on line	
Full Load Amps	12.4/6.2	Breakdown Torque	7 LB-FT	
R.P.M.	1725	Pull-up Torque	6 LB-FT	
Hz	60 Phase	Locked-rotor Torque	7.62 LB-FT	
NEMA Design Code	L KVA Code	Starting Current	78 A	
Service Factor (S.F.)	1	No-load Current	7.6 A	
NEMA Nom. Eff.	67 Power Factor	Line-line Res. @ 25°C	0.684 Ω A Ph 1.69 Ω B Ph	
Rating - Duty	40C AMB-CONT	Temp. Rise @ Rated Load	42°C	
		Locked-rotor Power Factor	93.3	
		Rotor inertia	0.166 LB-FT <sup>2</sup>	

**Load Characteristics 115 V, 60 Hz, 1 HP**

% of Rated Load	25	50	75	100	125	150
Power Factor	41	57	70	76	83	86
Efficiency	51	64.5	67	68.5	66.5	63.5
Speed	1790	1780	1765	1750	1735	1710
Line amperes	8	9	10.4	12.4	14.5	17.4

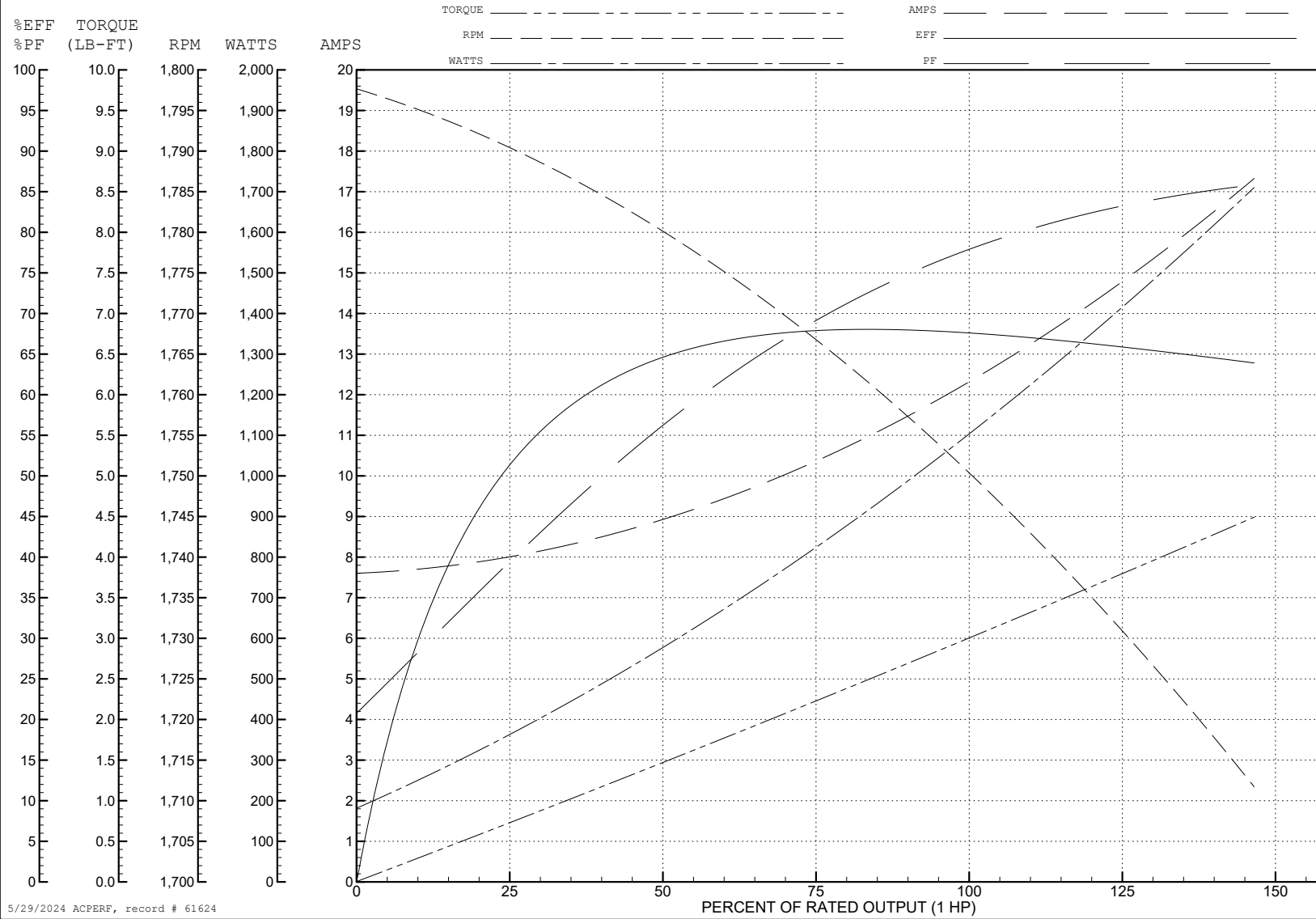
ABB Motors and Mechanical Inc.

WINDING # 35WG0602

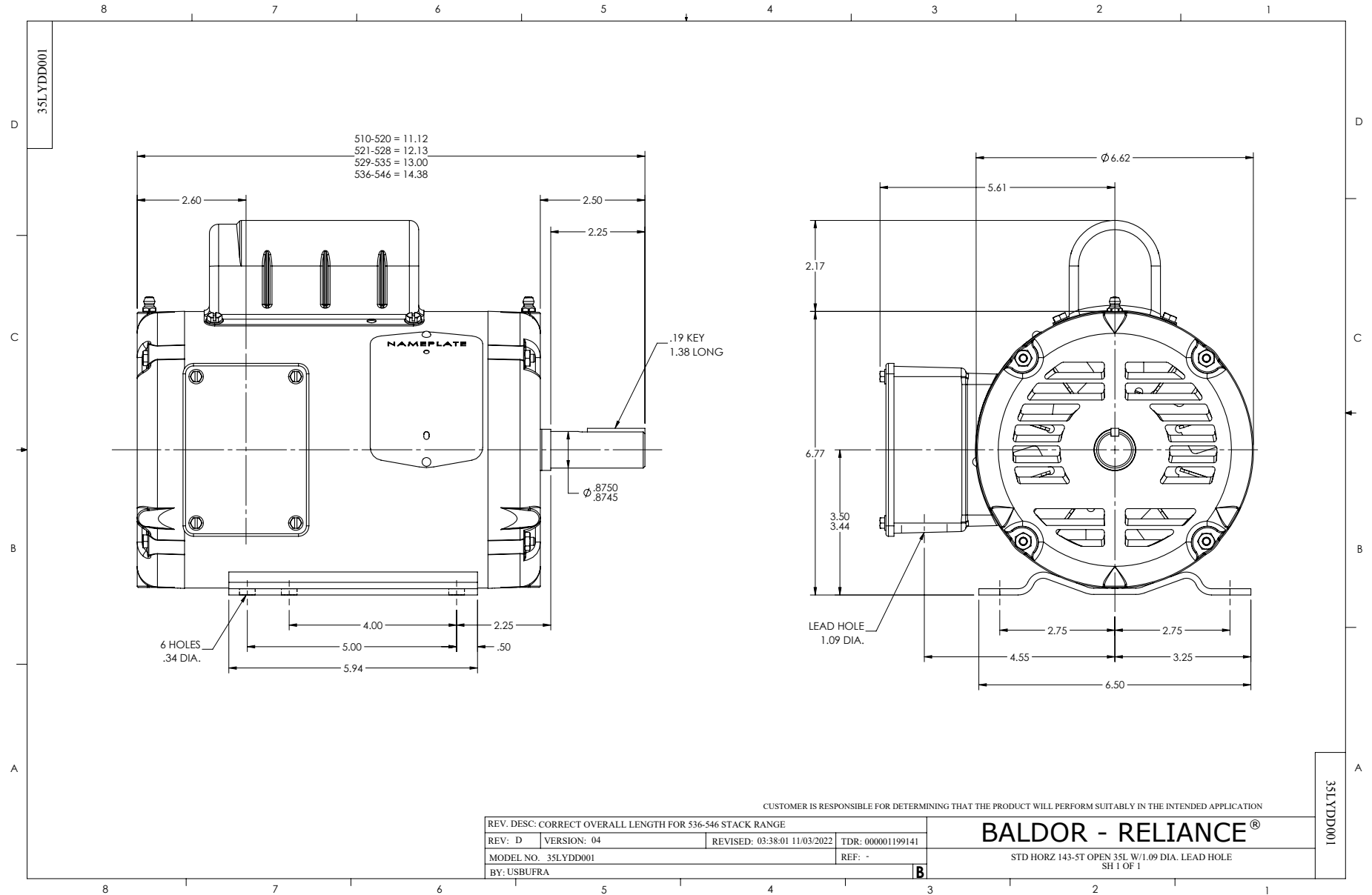
Typical performance - not guaranteed values.

1 HP 1 PH 60 HZ 1725 RPM 115 V 3528L

TORQUES (LB-FT): PO=7 PU=6 LR=7.62 LRA=78

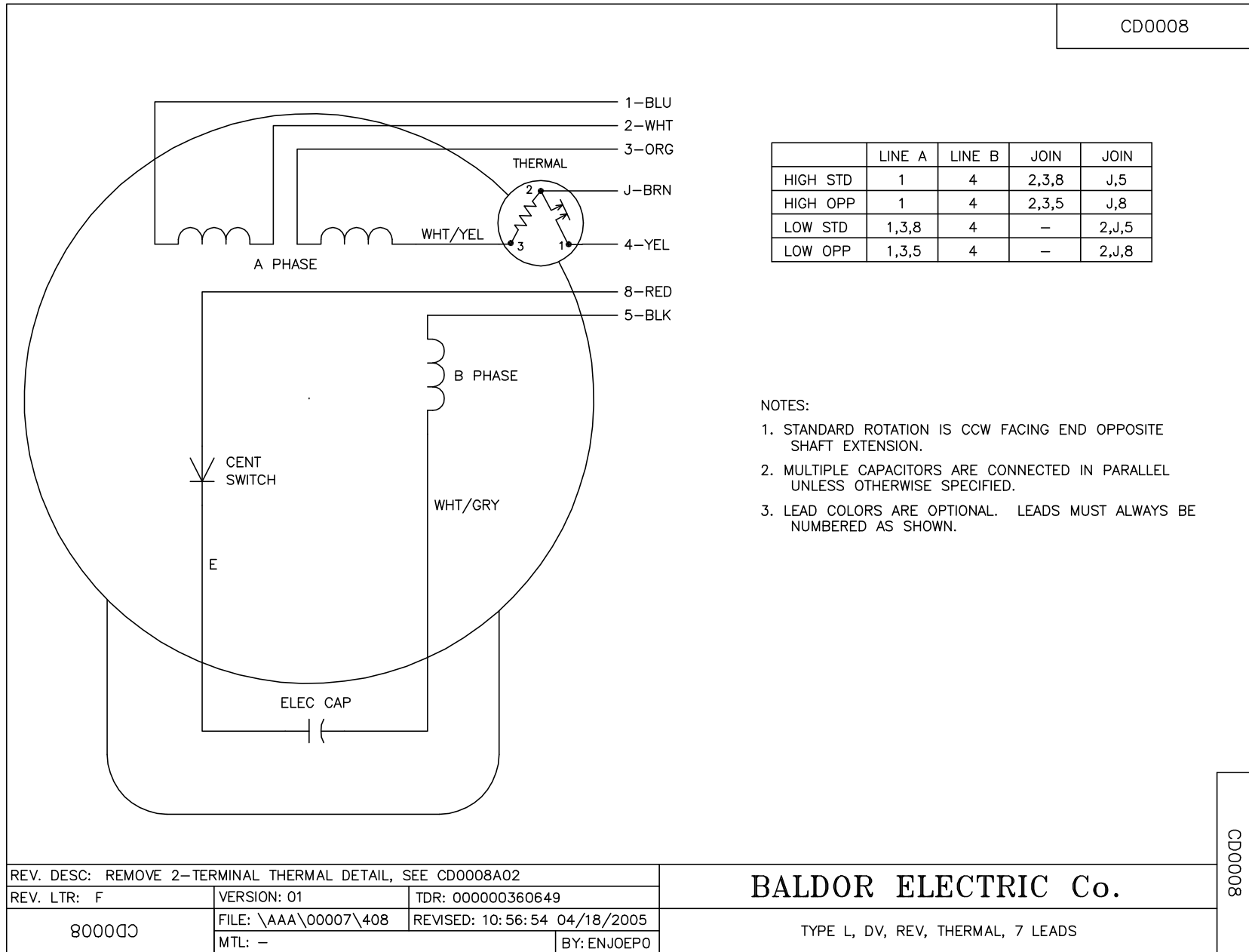


5/29/2024 ACPERF, record # 61624





CD0008



REV. DESC: REMOVE 2-TERMINAL THERMAL DETAIL, SEE CD0008A02		
REV. LTR: F	VERSION: 01	TDR: 000000360649
800000	FILE: \AAA\00007\408	REVISED: 10:56:54 04/18/2005
	MTL: -	BY: ENJOEPO

**BALDOR ELECTRIC Co.**

TYPE L, DV, REV, THERMAL, 7 LEADS

CD0008