

BALDOR • RELIANCE

Customer information packet

L1318T

1HP, 1750RPM, 1PH, 60HZ, 143T, 3528L, OPEN, F1

Class - None

Division - Not Applicable

Specifications

Enclosure	OPEN
Frame	143T
Frame Material	Steel
Frequency	60.00 Hz
Haz Area Class and Group	None
Haz Area Division	Not Applicable
Motor Letter Type	Cap Start, Induction Run
Output @ Frequency	1.000 HP @ 60 HZ
Phase	1
Synchronous Speed @ Frequency	1800 RPM @ 60 HZ
Voltage @ Frequency	115.0 V @ 60 HZ 230.0 V @ 60 HZ
Agency Approvals	CSA UR
Ambient Temperature	40 °C
Auxillary Box	No Auxillary Box
Auxillary Box Lead Termination	None
Base Indicator	Rigid
Bearing Grease Type	Polyrex EM (-20F +300F)
Blower	None
Current @ Voltage	6.200 A @ 230.0 V 12.400 A @ 115.0 V
Design Code	L
Drip Cover	No Drip Cover
Duty Rating	CONT
Efficiency @ 100% Load	68.0 %
Electrically Isolated Bearing	Not Electrically Isolated
Feedback Device	NO FEEDBACK
Front Shaft Indicator	None
Heater Indicator	No Heater
High Voltage Full Load Amps	6.2 a
Insulation Class	F

Part detail

Revision	B
Type	AC
Mech. spec.	35DD001
Base	
Status	PRD/A
Elec. spec.	35WGG376
Layout	35LYDD001
Eff. date	05-07-2024
CD Diagram	CD0001
Poles	04
Leads	6#18 Y
Proprietary	False
Created date	09-21-2022

Inverter Code	Not Inverter
KVA Code	K
Lifting Lugs	No Lifting Lugs
Locked Bearing Indicator	No Locked Bearing
Motor Lead Quantity/Wire Size	6 @ 18 AWG
Motor Lead Termination	Flying Leads
Motor Standards	NEMA
Motor Type	3524L
Mounting Arrangement	F1
Number of Poles	4
Overall Length	12.13 IN
Power Factor	76
Product Family	General Purpose
Pulley End Bearing Type	Ball
Pulley Face Code	Standard
Pulley Shaft Indicator	Standard
Rodent Screen	None
Service Factor	1.15
Shaft Diameter	0.875 IN
Shaft Ground Indicator	No Shaft Grounding
Shaft Rotation	Reversible
Shaft Slinger Indicator	No Slinger
Speed	1725 rpm
Speed Code	Single Speed
Starting Method	Direct on line
Thermal Device - Bearing	None
Thermal Device - Winding	None
Vibration Sensor Indicator	No Vibration Sensor
Winding Thermal 1	None
Winding Thermal 2	None

Nameplate

NP1256L									
CAT.NO.	L1318T								
SPEC.	35DD001G376								
HP	1								
VOLTS	115/230								
AMP	12.5/6.3								
RPM	1750								
FRAME	143T		HZ	60		PH	1		
SER.F.	1.15	CODE	L	DES	L	CLASS	F		
NEMA-NOM-EFF	74	PF	69						
RATING	40C AMB-CONT								
CC									
DE	6205		ODE	6203					
ENCL	OPEN	SN							
	SFA 13.9/6.95								

Accessories

Part number	Description	Multiplier
35-8764	C FACE KIT	A8
35EP1604A01SP	D-FLANGE KIT	A8

AC Induction Motor Performance Data

Record # 89066

Typical performance - not guaranteed values

Winding: 35WGG376-R003		Type: 3528L	Enclosure: OPEN		
Nameplate Data			115 V, 60 Hz: Low Voltage Connection		
Rated Output (HP)	1	Full Load Torque	3.01 LB-FT		
Volts	115/230	Start Configuration	direct on line		
Full Load Amps	12.5/6.3	Breakdown Torque	9.7 LB-FT		
R.P.M.	1750	Pull-up Torque	7.8 LB-FT		
Hz	60 Phase	1	Locked-rotor Torque	13.9 LB-FT	
NEMA Design Code	L	KVA Code	L	Starting Current	85.3 A
Service Factor (S.F.)	1.15	No-load Current	9.53 A		
NEMA Nom. Eff.	74	Power Factor	69	Line-line Res. @ 25°C	0.525 Ω A Ph 1.17 Ω B Ph
Rating - Duty	40C AMB-CONT		Temp. Rise @ Rated Load	35°C	
S.F. Amps			Temp. Rise @ S.F. Load	58°C	
			Locked-rotor Power Factor	94.8	
			Rotor inertia	0.203 lb-ft ²	

Load Characteristics 115 V, 60 Hz, 1 HP

% of Rated Load	25	50	75	100	125	150	S.F.
Power Factor	33	48	60	69	76	80	80
Efficiency	53.5	67.3	72.9	74.9	74.6	72.8	67.2
Speed	1786	1775	1763	1750	1735	1714	1704
Line amperes	9.3	9.98	11.06	12.51	14.28	16.82	13.9

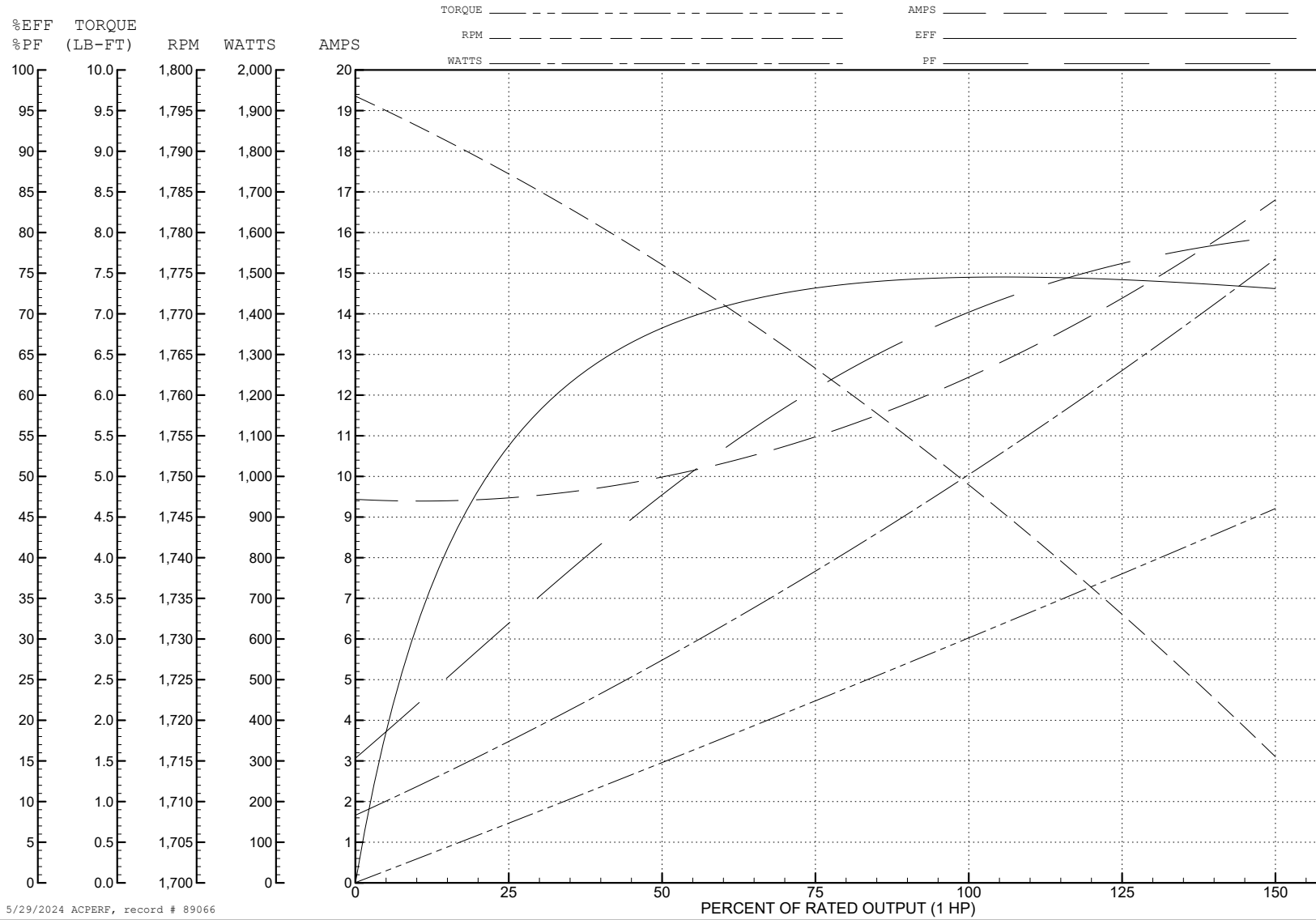
ABB Motors and Mechanical Inc.

WINDING # 35WGG376

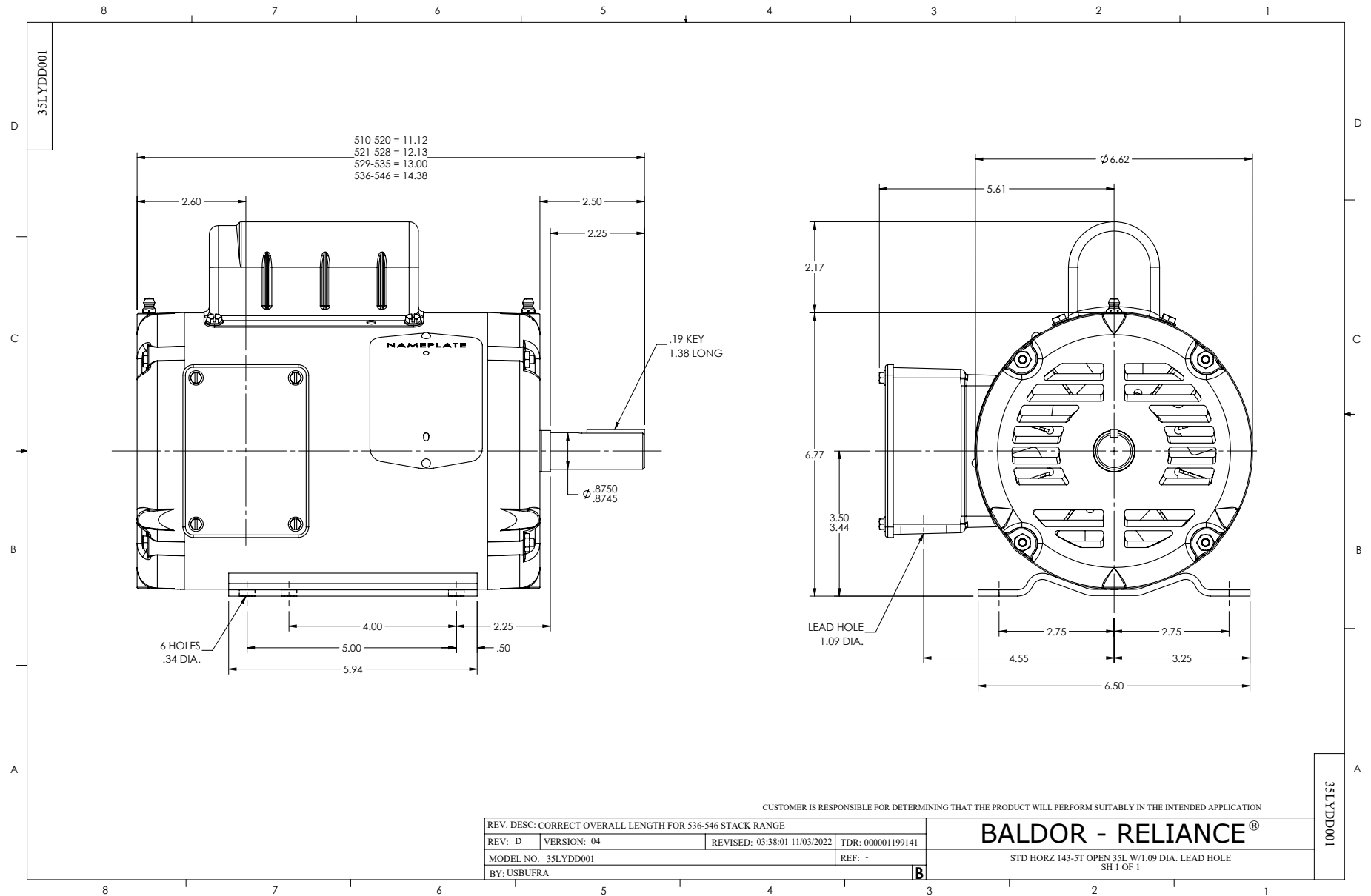
Typical performance - not guaranteed values.

1 HP 1 PH 60 HZ 1750 RPM 115 V 3528L

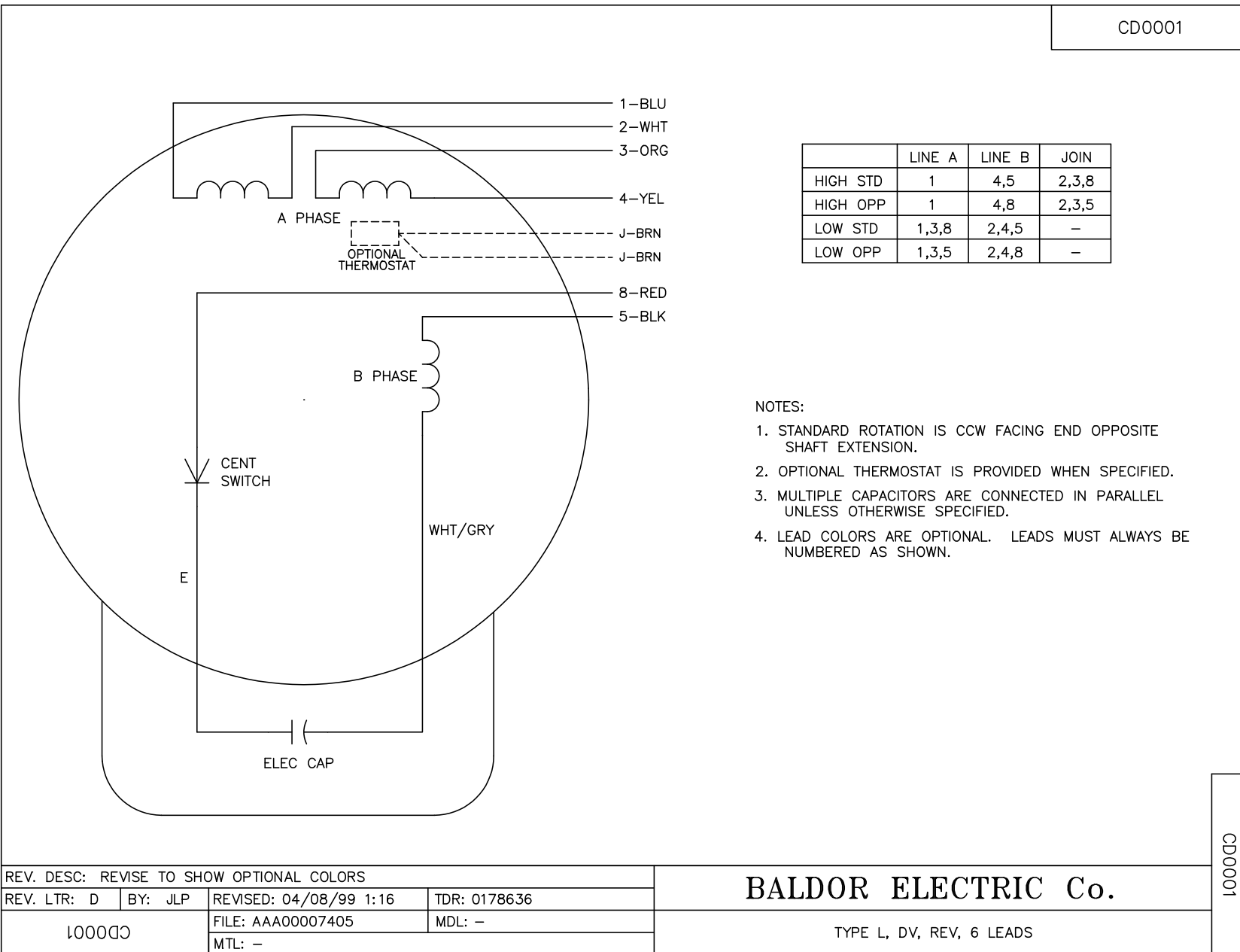
TORQUES (LB-FT): PO=9.7 PU=7.8 LR=13.9 LRA=85.3



5/29/2024 ACPERF, record # 89066



CD0001



	LINE A	LINE B	JOIN
HIGH STD	1	4,5	2,3,8
HIGH OPP	1	4,8	2,3,5
LOW STD	1,3,8	2,4,5	-
LOW OPP	1,3,5	2,4,8	-

NOTES:

1. STANDARD ROTATION IS CCW FACING END OPPOSITE SHAFT EXTENSION.
2. OPTIONAL THERMOSTAT IS PROVIDED WHEN SPECIFIED.
3. MULTIPLE CAPACITORS ARE CONNECTED IN PARALLEL UNLESS OTHERWISE SPECIFIED.
4. LEAD COLORS ARE OPTIONAL. LEADS MUST ALWAYS BE NUMBERED AS SHOWN.

REV. DESC: REVISE TO SHOW OPTIONAL COLORS			
REV. LTR: D	BY: JLP	REVISED: 04/08/99 1:16	TDR: 0178636
100000		FILE: AAA00007405	MDL: -
		MTL: -	

BALDOR ELECTRIC Co.

TYPE L, DV, REV, 6 LEADS

CD0001