

BALDOR • RELIANCE

Customer information packet

L1318-50

1/.75KW, 1460RPM, 1PH, 50HZ, 56, 3532LC, OPEN

Class - None

Division - Not Applicable

Specifications

Enclosure	OPEN
Frame	56
Frame Material	Steel
Frequency	50.00 Hz
Haz Area Class and Group	None
Haz Area Division	Not Applicable
Motor Letter Type	Cap Start, Cap Run
Output @ Frequency	.750 KW @ 50 HZ
Phase	1
Synchronous Speed @ Frequency	1500 RPM @ 50 HZ
Voltage @ Frequency	220.0 V @ 50 HZ 110.0 V @ 50 HZ
Agency Approvals	CE CURUS UKCA WEEE C UR US
Ambient Temperature	40 °C
Auxillary Box	No Auxillary Box
Auxillary Box Lead Termination	None
Base Indicator	Rigid
Bearing Grease Type	Polyrex EM (-20F +300F)
Blower	None
Current @ Voltage	4.600 A @ 220.0 V 9.200 A @ 110.0 V
Design Code	-
Drip Cover	No Drip Cover
Duty Rating	CONT
Efficiency @ 100% Load	79.6 %
Electrically Isolated Bearing	Not Electrically Isolated
Feedback Device	NO FEEDBACK
Front Shaft Indicator	None

Part detail

Revision	C
Type	AC
Mech. spec.	35M497
Base	
Status	PRD/A
Elec. spec.	35WGG769
Layout	35LYM497
Eff. date	10-16-2023
CD Diagram	CD0055
Poles	04
Leads	6#18
Proprietary	False
Created date	05-19-2023

Heater Indicator	No Heater
High Voltage Full Load Amps	4.6 a
Insulation Class	F
Inverter Code	Not Inverter
KVA Code	K
Lifting Lugs	No Lifting Lugs
Locked Bearing Indicator	No Locked Bearing
Motor Finish	CLEAR COAT
Motor Lead Quantity/Wire Size	6 @ 18 AWG
Motor Lead Termination	Flying Leads
Motor Standards	NEMA
Motor Type	3532LC
Mounting Arrangement	F1
Number of Poles	4
Overall Length	12.94 IN
Power Factor	93
Product Family	General Purpose
Pulley End Bearing Type	Ball
Pulley Face Code	Standard
Pulley Shaft Indicator	Standard
Rodent Screen	None
RoHS Status	ROHS COMPLIANT
Service Factor	1.00
Shaft Diameter	0.625 IN
Shaft Ground Indicator	No Shaft Grounding
Shaft Rotation	Reversible
Shaft Slinger Indicator	No Slinger
Speed	1460 rpm
Speed Code	Single Speed
Starting Method	Direct on line
Thermal Device - Bearing	None
Thermal Device - Winding	None
Vibration Sensor Indicator	No Vibration Sensor
Winding Thermal 1	None

Winding Thermal 2

None

Nameplate

NP1372L									
CAT.NO.	L1318-50								
SPEC.	35M497G769								
HP	1/.75KW								
VOLTS	110/220								
AMP	9.2/4.6								
R.P.M. (1/MIN)	1460								
FRAME	56	HZ	50	PH	1				
SER.F.	1.00	CODE	K	DES	-	CL	F		
NEMA-NOM-EFF	79.6	PF	93						
RATING	40C AMB-S1 CONT								
CC	IP22 KG23 IC01								
DE	6205	ODE	6203						
ENCL	OPEN	SN							

Accessories

Part number	Description	Multiplier
35-8764	C FACE KIT	A8
35EP1604A01SP	D-FLANGE KIT	A8

AC Induction Motor Performance Data

Record # 101570

Typical performance - not guaranteed values

Winding: 35WGG769-R001		Type: 3532LC	Enclosure: OPEN	
Nameplate Data			220 V, 50 Hz: High Voltage Connection	
Rated Output (KW)	.75	Full Load Torque	3.599 LB-FT	
Volts	110/220	Start Configuration	direct on line	
Full Load Amps	9.2/4.6	Breakdown Torque	9.34 LB-FT	
R.P.M.	1460	Pull-up Torque	6.87 LB-FT	
Hz	50 Phase	1	Locked-rotor Torque	10.4 LB-FT
NEMA Design Code	- KVA Code	K	Starting Current	38.1 A
Service Factor (S.F.)		1	No-load Current	1.69 A
NEMA Nom. Eff.	79.6 Power Factor	93	Line-line Res. @ 25°C	2.936 Ω A Ph 1.6806 Ω B Ph
Rating - Duty		40C AMB-CONT	Temp. Rise @ Rated Load	42°C

Load Characteristics 220 V, 50 Hz, 0.75 KW

% of Rated Load	25	50	75	100	125	150
Power Factor	68	83	90	93	94	95
Efficiency	62.5	76.3	80.6	81.2	79.9	77
Speed	1489.6	1480.7	1471.1	1460.2	1447.2	1430.2
Line amperes	1.99	2.68	3.52	4.51	5.65	6.99

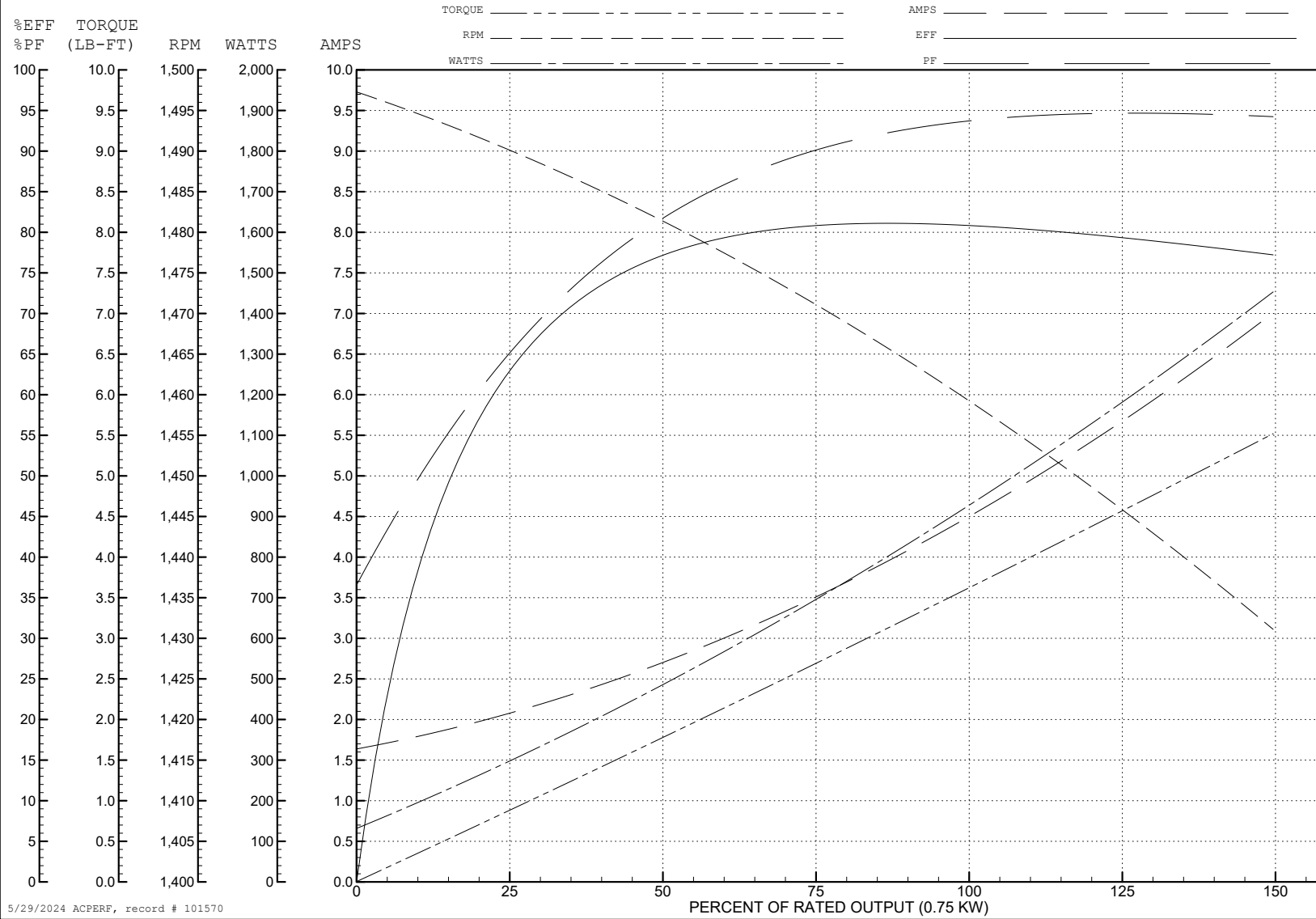
ABB Motors and Mechanical Inc.

WINDING # 35WGG769

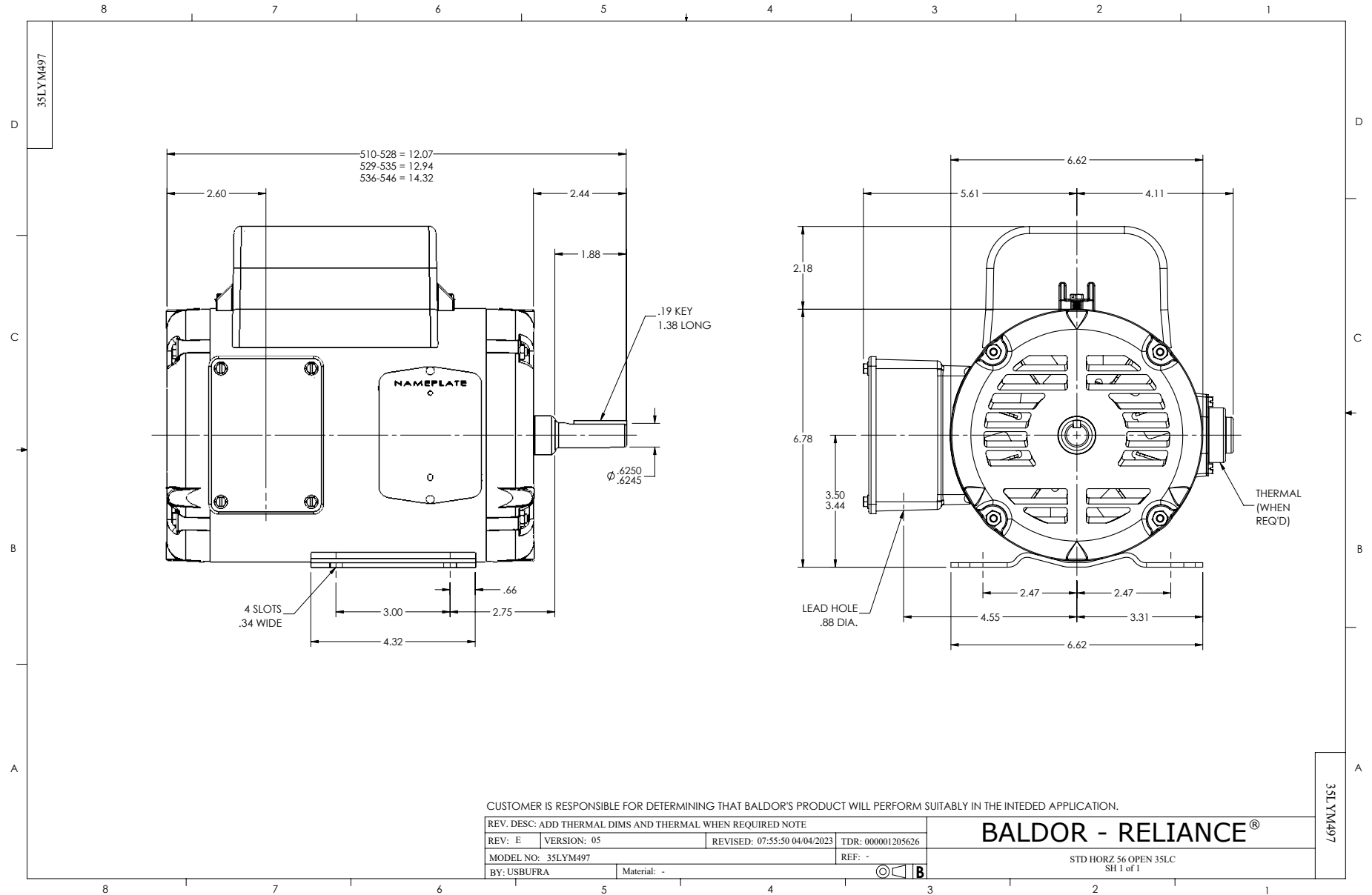
0.75 KW 1 PH 50 HZ 1460 RPM 220 V 3532LC

Typical performance - not guaranteed values.

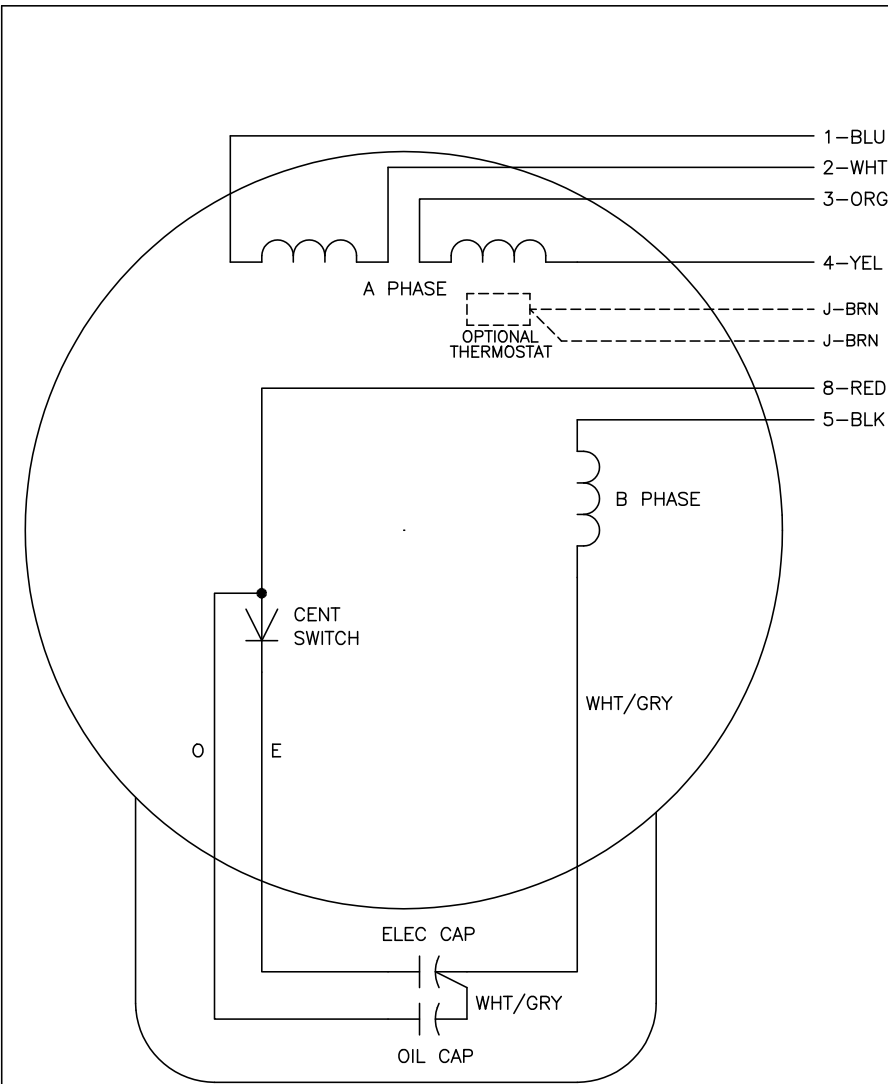
TORQUES (LB-FT): PO=9.34 PU=6.87 LR=10.4 LRA=38.1



5/29/2024 ACPERF, record # 101570



CD0055



	LINE A	LINE B	JOIN
HIGH STD	1	4,5	2,3,8
HIGH OPP	1	4,8	2,3,5
LOW STD	1,3,8	2,4,5	-
LOW OPP	1,3,5	2,4,8	-

NOTES:

1. STANDARD ROTATION IS CCW FACING END OPPOSITE SHAFT EXTENSION.
2. OPTIONAL THERMOSTAT IS PROVIDED WHEN SPECIFIED.
3. MULTIPLE CAPACITORS ARE CONNECTED IN PARALLEL UNLESS OTHERWISE SPECIFIED.
4. LEAD COLORS ARE OPTIONAL. LEADS MUST ALWAYS BE NUMBERED AS SHOWN.

CD0055

REV. DESC: REVISE TO SHOW OPTIONAL COLORS			
REV. LTR: D	BY: JLP	REVISED: 04/08/99 1:17	TDR: 0178636
C00000		FILE: AAA00007414	MDL: -
		MTL: -	

BALDOR ELECTRIC Co.

TYPE LC, DV, REV, 6 LEADS