

BALDOR • RELIANCE

Customer information packet

L1313-50

1.5/1.1KW, 2920RPM, 1PH, 50HZ, 56, 3530LC, OPE

Class - None

Division - Not Applicable

Copyright © All product information within this document is subject to ABB Motors and Mechanical Inc. copyright © protection, unless otherwise noted.

5/29/2024 10:51:55 AM

Specifications

Enclosure	OPEN
Frame	56
Frame Material	Steel
Frequency	50.00 Hz
Haz Area Class and Group	None
Haz Area Division	Not Applicable
Motor Letter Type	Cap Start, Cap Run
Output @ Frequency	1.100 KW @ 50 HZ
Phase	1
Synchronous Speed @ Frequency	3000 RPM @ 50 HZ
Voltage @ Frequency	220.0 V @ 50 HZ
Agency Approvals	C UR US WEEE UKCA CURUS CE
Ambient Temperature	40 °C
Auxillary Box	No Auxillary Box
Auxillary Box Lead Termination	None
Base Indicator	Rigid
Bearing Grease Type	Polyrex EM (-20F +300F)
Blower	None
Current @ Voltage	6.100 A @ 220.0 V
Design Code	-
Drip Cover	No Drip Cover
Duty Rating	CONT
Efficiency @ 100% Load	82.5 %
Electrically Isolated Bearing	Not Electrically Isolated
Feedback Device	NO FEEDBACK
Front Shaft Indicator	None
Heater Indicator	No Heater
High Voltage Full Load Amps	6.1 a

Part detail

Revision	D
Type	AC
Mech. spec.	35M497
Base	
Status	PRD/A
Elec. spec.	35WGG779
Layout	35LYM497
Eff. date	05-14-2024
CD Diagram	CD0017A02
Poles	02
Leads	2#16 A PH,2#18 B PH
Proprietary	False
Created date	06-01-2023

Insulation Class	B
Inverter Code	Not Inverter
KVA Code	J
Lifting Lugs	No Lifting Lugs
Locked Bearing Indicator	No Locked Bearing
Motor Lead Quantity/Wire Size	2 @ 16 AWG, A PH
Motor Lead Termination	Flying Leads
Motor Standards	NEMA
Motor Type	3530LC
Mounting Arrangement	F1
Number of Poles	2
Overall Length	12.94 IN
Power Factor	98
Product Family	General Purpose
Pulley End Bearing Type	Ball
Pulley Face Code	Standard
Pulley Shaft Indicator	Standard
Rodent Screen	None
RoHS Status	ROHS COMPLIANT
Service Factor	1.15
Shaft Diameter	0.625 IN
Shaft Ground Indicator	No Shaft Grounding
Shaft Rotation	Reversible
Shaft Slinger Indicator	No Slinger
Speed	2920 rpm
Speed Code	Single Speed
Starting Method	Direct on line
Thermal Device - Bearing	None
Thermal Device - Winding	None
Vibration Sensor Indicator	No Vibration Sensor
Winding Thermal 1	None
Winding Thermal 2	None

Nameplate

NP1372L										
CAT.NO.	L1313-50									
SPEC.	35M497G779G1									
HP	1.5/1.1KW									
VOLTS	220									
AMP	6.1									
R.P.M. (1/MIN)	2920									
FRAME	56	HZ	50	PH	1					
SER.F.	1.15	CODE	J	DES	-	CL	B			
NEMA-NOM-EFF	82.5	PF	98							
RATING	40C AMB-S1 CONT									
CC	IP22 KG23 IC01									
DE	6205	ODE	6203							
ENCL	OPEN	SN								

Accessories

Part number	Description	Multiplier
35-8764	C FACE KIT	A8
35EP1604A01SP	D-FLANGE KIT	A8

AC Induction Motor Performance Data

Record # 101573

Typical performance - not guaranteed values

Winding: 35WGG779-R001		Type: 3530LC	Enclosure: OPEN	
Nameplate Data			220 V, 50 Hz: Single Voltage Motor	
Rated Output (KW)	1.1	Full Load Torque	2.651 LB-FT	
Volts	220	Start Configuration	direct on line	
Full Load Amps	6.1	Breakdown Torque	8.72 LB-FT	
R.P.M.	2920	Pull-up Torque	7.73 LB-FT	
Hz	50 Phase	1	Locked-rotor Torque	9.1 LB-FT
NEMA Design Code	- KVA Code	J	Starting Current	51.1 A
Service Factor (S.F.)		1.15	No-load Current	1.07 A
NEMA Nom. Eff.	82.5 Power Factor	98	Line-line Res. @ 25°C	1.321 Ω A Ph 2.6733 Ω B Ph
Rating - Duty		40C AMB-CONT	Temp. Rise @ Rated Load	24°C
S.F. Amps			Temp. Rise @ S.F. Load	28°C

Load Characteristics 220 V, 50 Hz, 1.1 KW

% of Rated Load	25	50	75	100	125	150	S.F.
Power Factor	94	97	98	98	98	98	98
Efficiency	65	77.7	83.2	83.7	83.6	81.7	83.6
Speed	2979.3	2961.6	2943.7	2921.8	2897.6	2868.6	2907
Line amperes	2.08	3.35	4.62	6.09	7.64	9.39	7.02

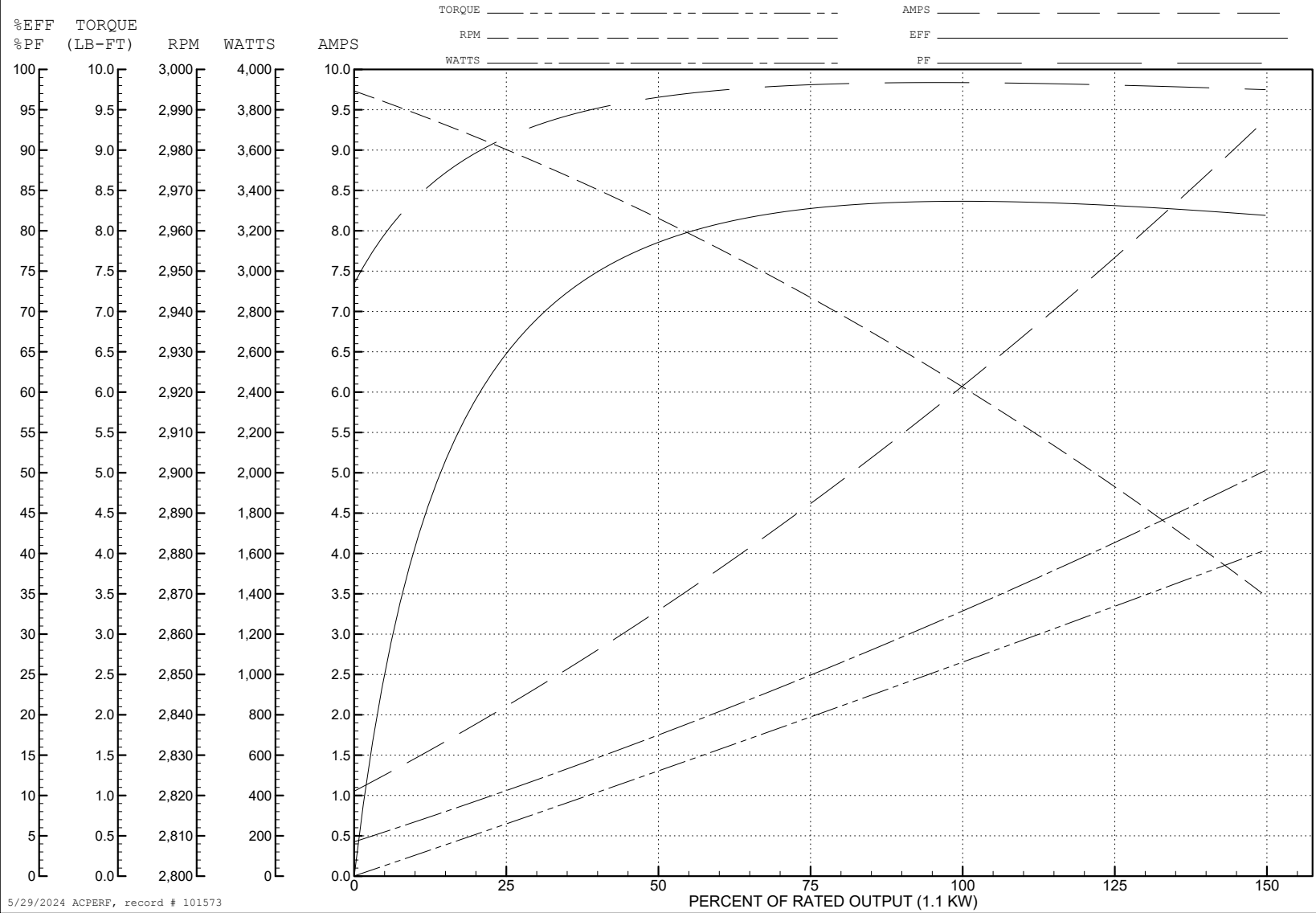
ABB Motors and Mechanical Inc.

WINDING # 35WGG779

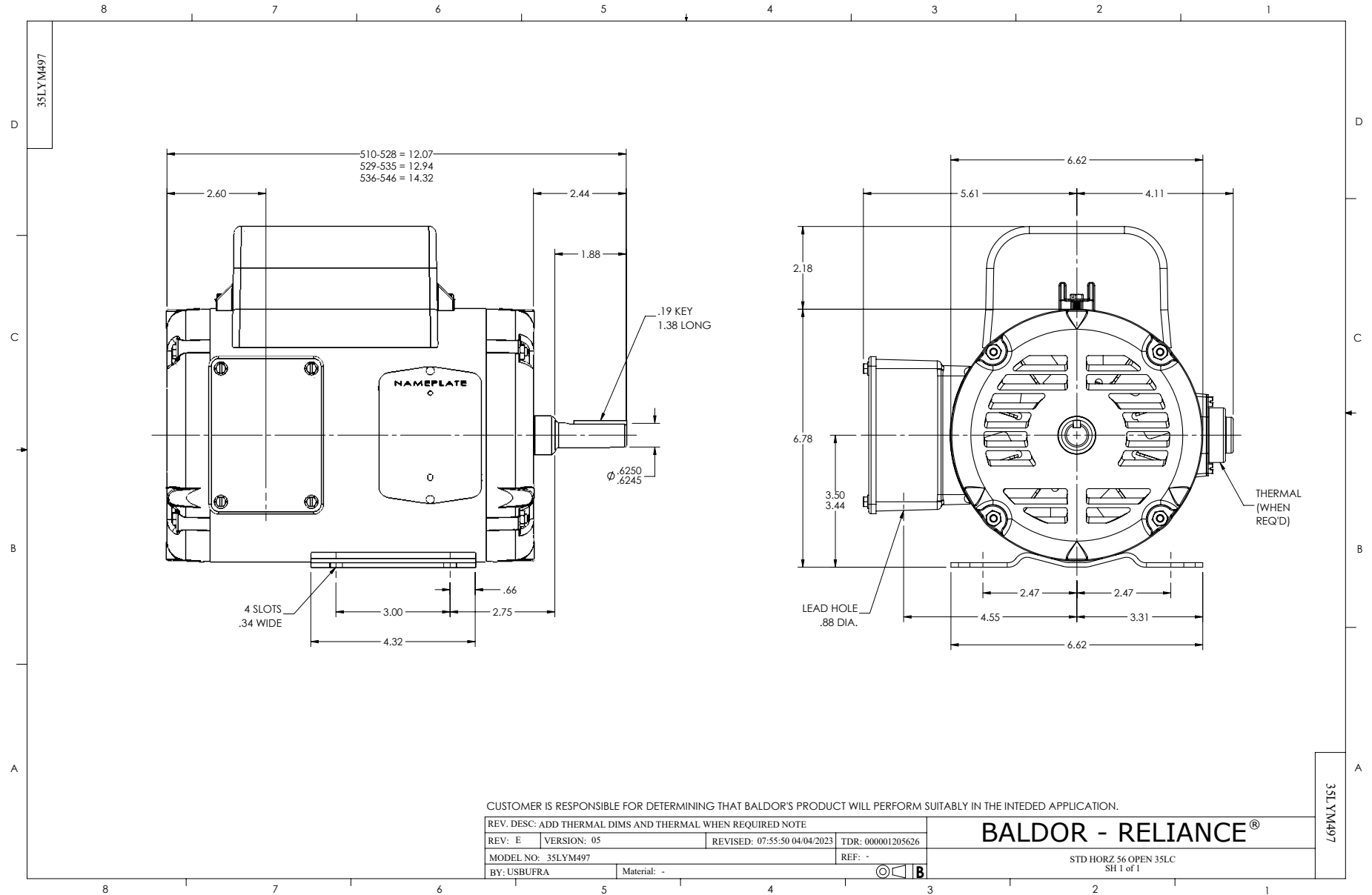
Typical performance - not guaranteed values.

1.1 KW 1 PH 50 HZ 2920 RPM 220 V 3530LC

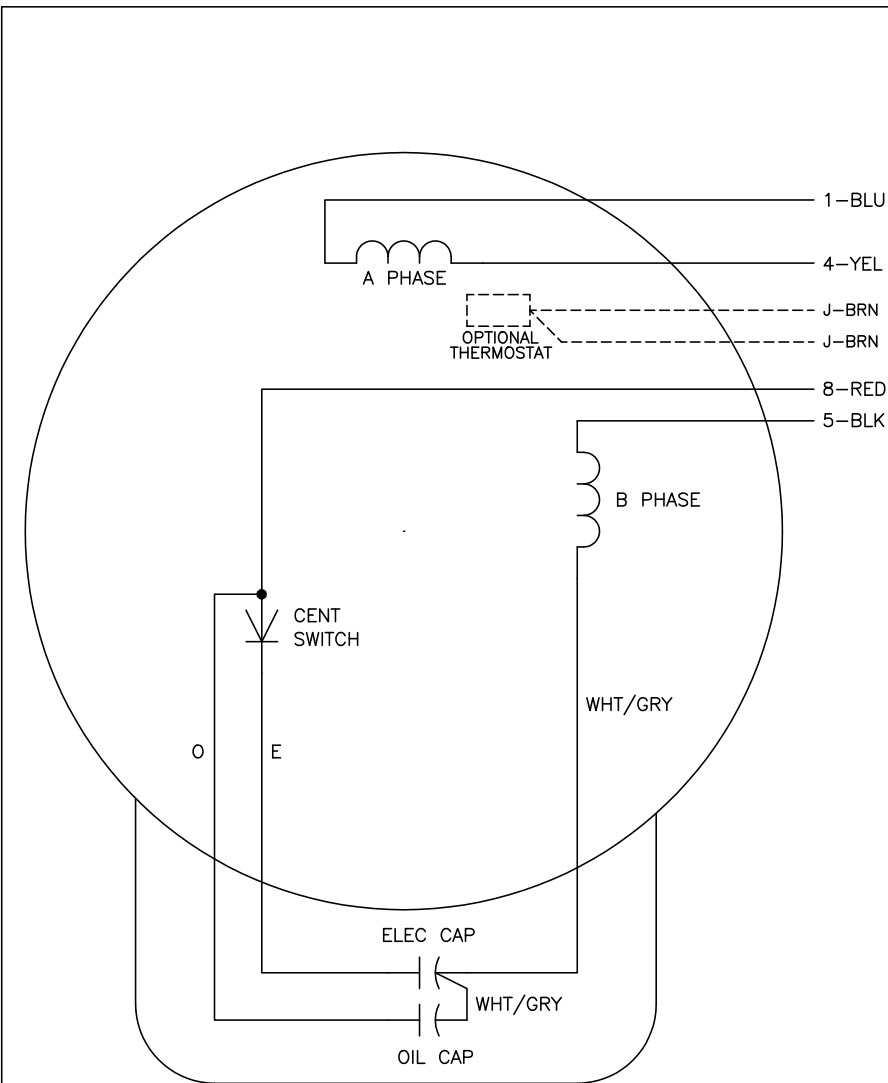
TORQUES (LB-FT): PO=8.72 PU=7.73 LR=9.1 LRA=51.1



5/29/2024 ACPERF, record # 101573



CD0017A02



	LINE A	LINE B
STD	1,8	4,5
OPP	1,5	4,8

NOTES:

1. STANDARD ROTATION IS CCW FACING END OPPOSITE SHAFT EXTENSION.
2. OPTIONAL THERMOSTAT IS PROVIDED WHEN SPECIFIED.
3. MULTIPLE CAPACITORS ARE CONNECTED IN PARALLEL UNLESS OTHERWISE SPECIFIED.
4. LEAD COLORS ARE OPTIONAL. LEADS MUST ALWAYS BE NUMBERED AS SHOWN.

CD0017A02

REV. DESC: REVISE TO SHOW OPTIONAL COLORS			
REV. LTR: B	BY: JLP	REVISED: 04/09/99 11:30	TDR: 0178636
CD0017A02		FILE: AAA00007514	MDL: -
		MTL: -	

BALDOR ELECTRIC Co.

TYPE LC, SV, REV, 4 LEADS