

BALDOR • RELIANCE

Customer information packet

L1309-50

1/KW .75, 2850RPM, 1PH, 50HZ, 56, 3432LC, OPEN

Class - None

Division - Not Applicable

Specifications

Enclosure	OPEN
Frame	56
Frame Material	Steel
Frequency	50.00 Hz
Haz Area Class and Group	None
Haz Area Division	Not Applicable
Motor Letter Type	Cap Start, Cap Run
Output @ Frequency	1.000 HP @ 50 HZ
Phase	1
Synchronous Speed @ Frequency	3000 RPM @ 50 HZ
Voltage @ Frequency	110.0 V @ 50 HZ 220.0 V @ 50 HZ
Agency Approvals	CE CSA UR WEEE
Ambient Temperature	40 °C
Auxillary Box	No Auxillary Box
Auxillary Box Lead Termination	None
Base Indicator	Rigid
Bearing Grease Type	Polyrex EM (-20F +300F)
Blower	None
Design Code	N
Drip Cover	No Drip Cover
Duty Rating	CONT
Electrically Isolated Bearing	Not Electrically Isolated
Feedback Device	NO FEEDBACK
Front Shaft Indicator	None
Heater Indicator	No Heater
Insulation Class	B
Inverter Code	Not Inverter
Lifting Lugs	No Lifting Lugs

Part detail

Revision	B
Type	AC
Mech. spec.	34F353
Base	
Status	PRD/A
Elec. spec.	34WGR750
Layout	34LYF353
Eff. date	10-06-2023
CD Diagram	CD0055
Poles	02
Leads	4#16 A PH,2#18 B PH
Proprietary	False
Created date	03-01-2023

Locked Bearing Indicator	No Locked Bearing
Motor Lead Quantity/Wire Size	4 @ 16 AWG, A PH
Motor Lead Termination	Flying Leads
Motor Standards	NEMA
Motor Type	3432LC
Mounting Arrangement	F1
Number of Poles	2
Overall Length	11.50 IN
Product Family	General Purpose
Pulley End Bearing Type	Ball
Pulley Face Code	Standard
Pulley Shaft Indicator	Standard
Rodent Screen	None
Service Factor	1.25
Shaft Diameter	0.625 IN
Shaft Ground Indicator	No Shaft Grounding
Shaft Rotation	Reversible
Shaft Slinger Indicator	No Slinger
Speed	2850 rpm
Speed Code	Single Speed
Starting Method	Direct on line
Thermal Device - Bearing	None
Thermal Device - Winding	None
Vibration Sensor Indicator	No Vibration Sensor
Winding Thermal 1	None
Winding Thermal 2	None

Nameplate

NP1372L									
CAT.NO.	L1309-50								
SPEC.	34F353R750								
HP	1/KW .75								
VOLTS	110/220								
AMP	9/4.5								
R.P.M. (1/MIN)	2850								
FRAME	56	HZ	50	PH	1				
SER.F.	1.25	CODE	H	DES	-	CL	B		
NEMA-NOM-EFF	77.4	PF	96						
RATING	40C AMB-CONT								
CC	IP23 17KG IC01								
DE	6203	ODE	6203						
ENCL	OPEN	SN							
IE2-50HZ 77(75%),73(50%)									

AC Induction Motor Performance Data

Record # 101557

Typical performance - not guaranteed values

Winding: 34WGR750-R001		Type: 3432LC		Enclosure: OPEN	
Nameplate Data			220 V, 50 Hz: High Voltage Connection		
Rated Output (KW)	.75	Full Load Torque	1.855 LB-FT		
Volts	110/220	Start Configuration	direct on line		
Full Load Amps	9/4.5	Breakdown Torque	5.35 LB-FT		
R.P.M.	2850	Pull-up Torque	2.02 LB-FT		
Hz	50 Phase	1	Locked-rotor Torque	5.62 LB-FT	
NEMA Design Code	- KVA Code	H	Starting Current	29.6 A	
Service Factor (S.F.)		1.25	No-load Current	1.26 A	
NEMA Nom. Eff.	77.4 Power Factor	96	Line-line Res. @ 25°C	2.0318 Ω A Ph 2.1913 Ω B Ph	
Rating - Duty		40C AMB-CONT	Temp. Rise @ Rated Load	31°C	
S.F. Amps		11.6/5.8	Temp. Rise @ S.F. Load	43°C	

Load Characteristics 220 V, 50 Hz, 0.75 KW

% of Rated Load	25	50	75	100	125	150	S.F.
Power Factor	82	91	95	96	96	96	96
Efficiency	59.5	73.4	78	79	77.1	72.9	77.1
Speed	2960.2	2928.4	2892.4	2849.7	2800.2	2729.5	2800
Line amperes	1.77	2.54	3.47	4.52	5.75	7.31	5.75

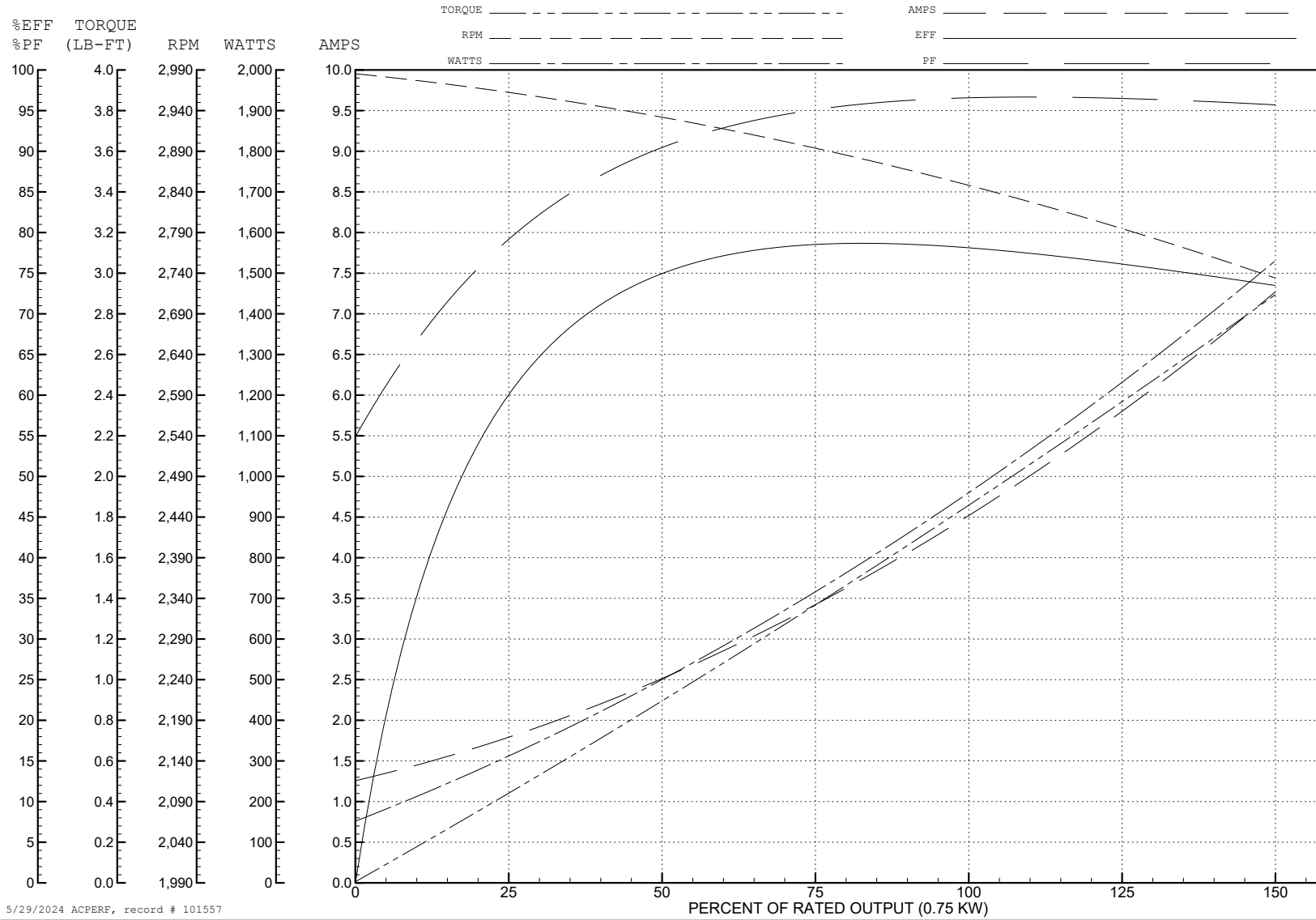
ABB Motors and Mechanical Inc.

WINDING # 34WGR750

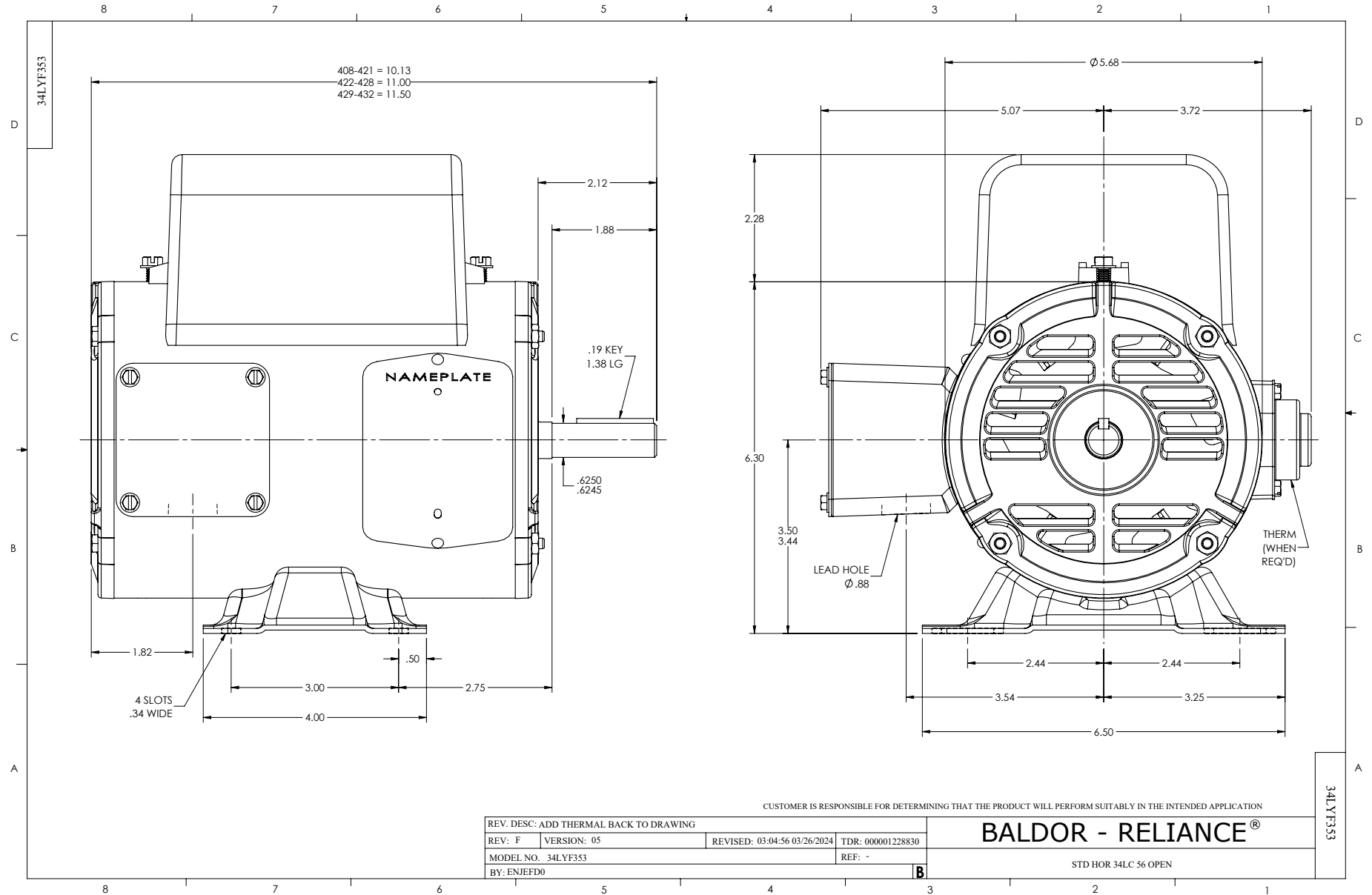
Typical performance - not guaranteed values.

0.75 KW 1 PH 50 HZ 2850 RPM 220 V 3432LC

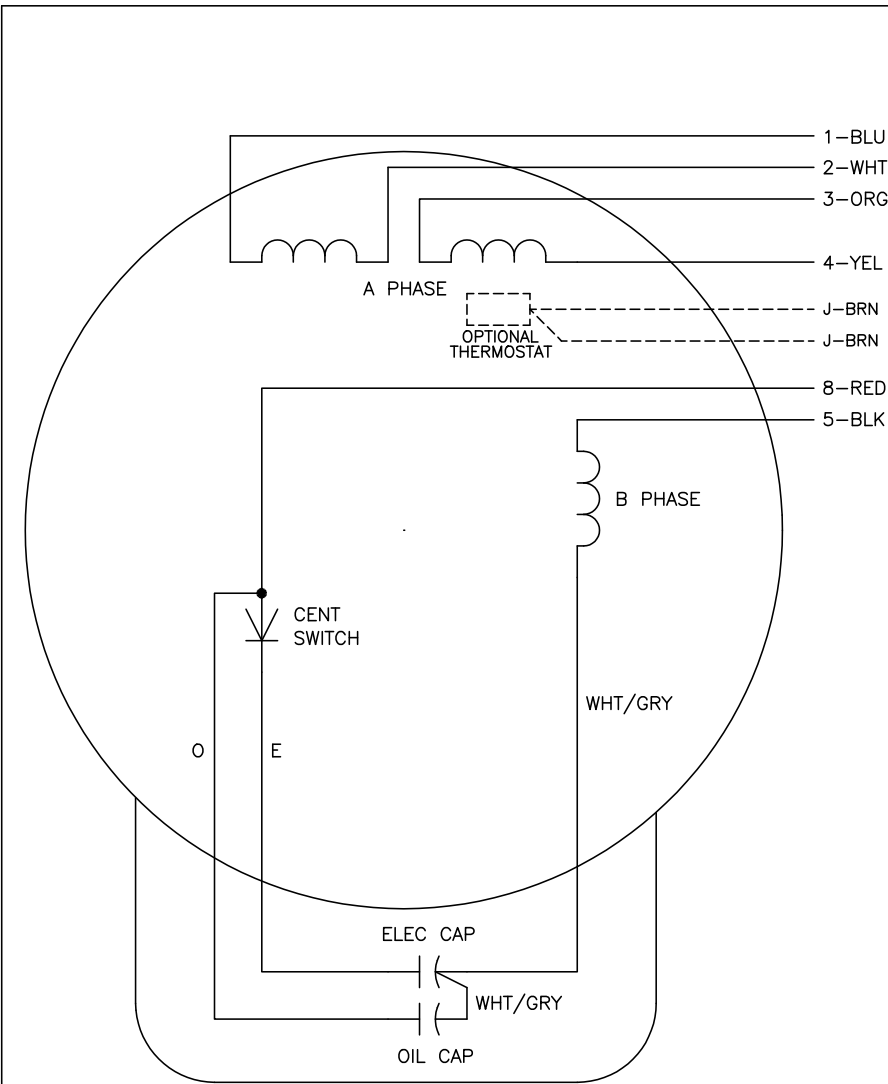
TORQUES (LB-FT): PO=5.35 PU=2.02 LR=5.62 LRA=29.6



5/29/2024 ACPERF, record # 101557



CD0055



	LINE A	LINE B	JOIN
HIGH STD	1	4,5	2,3,8
HIGH OPP	1	4,8	2,3,5
LOW STD	1,3,8	2,4,5	-
LOW OPP	1,3,5	2,4,8	-

NOTES:

1. STANDARD ROTATION IS CCW FACING END OPPOSITE SHAFT EXTENSION.
2. OPTIONAL THERMOSTAT IS PROVIDED WHEN SPECIFIED.
3. MULTIPLE CAPACITORS ARE CONNECTED IN PARALLEL UNLESS OTHERWISE SPECIFIED.
4. LEAD COLORS ARE OPTIONAL. LEADS MUST ALWAYS BE NUMBERED AS SHOWN.

CD0055

REV. DESC: REVISE TO SHOW OPTIONAL COLORS			
REV. LTR: D	BY: JLP	REVISED: 04/08/99 1:17	TDR: 0178636
C00000		FILE: AAA00007414	MDL: -
		MTL: -	

BALDOR ELECTRIC Co.

TYPE LC, DV, REV, 6 LEADS