

BALDOR • RELIANCE

Customer information packet

L1304-50

.5/.37KW, 1440RPM, 1PH, 50HZ, 56, 3424LC, ODP

Class - None

Division - Not Applicable

Specifications

Enclosure	ODP
Frame	56
Frame Material	Steel
Frequency	50.00 Hz
Haz Area Class and Group	None
Haz Area Division	Not Applicable
Motor Letter Type	Cap Start, Cap Run
Output @ Frequency	.370 KW @ 50 HZ
Phase	1
Synchronous Speed @ Frequency	1500 RPM @ 50 HZ
Voltage @ Frequency	110.0 V @ 50 HZ 220.0 V @ 50 HZ
Agency Approvals	C UR US CE CURUS UKCA WEEE
Ambient Temperature	40 °C
Auxillary Box	No Auxillary Box
Auxillary Box Lead Termination	None
Base Indicator	Rigid
Bearing Grease Type	Polyrex EM (-20F +300F)
Blower	None
Current @ Voltage	5.200 A @ 110.0 V 2.600 A @ 220.0 V
Design Code	-
Drip Cover	No Drip Cover
Duty Rating	CONT
Efficiency @ 100% Load	72.7 %
Electrically Isolated Bearing	Not Electrically Isolated
Feedback Device	NO FEEDBACK
Front Shaft Indicator	None

Part detail

Revision	B
Type	AC
Mech. spec.	34F353
Base	
Status	PRD/A
Elec. spec.	34WGX075
Layout	34LYF353
Eff. date	05-20-2024
CD Diagram	CD0055
Poles	04
Leads	6#18
Proprietary	False
Created date	10-10-2023

Heater Indicator	No Heater
High Voltage Full Load Amps	2.6 a
Insulation Class	B
Inverter Code	Not Inverter
KVA Code	K
Lifting Lugs	No Lifting Lugs
Locked Bearing Indicator	No Locked Bearing
Motor Lead Quantity/Wire Size	6 @ 18 AWG
Motor Lead Termination	Flying Leads
Motor Standards	NEMA
Motor Type	3424LC
Mounting Arrangement	F1
Number of Poles	4
Overall Length	11.00 IN
Power Factor	89
Product Family	General Purpose
Pulley End Bearing Type	Ball
Pulley Face Code	Standard
Pulley Shaft Indicator	Standard
Rodent Screen	None
RoHS Status	ROHS COMPLIANT
Service Factor	1.25
Shaft Diameter	0.625 IN
Shaft Ground Indicator	No Shaft Grounding
Shaft Rotation	Reversible
Shaft Slinger Indicator	No Slinger
Speed	1440 rpm
Speed Code	Single Speed
Starting Method	Direct on line
Thermal Device - Bearing	None
Thermal Device - Winding	None
Vibration Sensor Indicator	No Vibration Sensor
Winding Thermal 1	None
Winding Thermal 2	None

Nameplate

NP1372L										
CAT.NO.	L1304-50									
SPEC.	34F353X075									
HP	.5/.37KW									
VOLTS	110/220									
AMP	5.2/2.6									
R.P.M. (1/MIN)	1440									
FRAME	56		HZ	50		PH	1			
SER.F.	1.25	CODE	K	DES	-	CL	B			
NEMA-NOM-EFF	72.7	PF	89							
RATING	40C AMB-S1 CONT									
CC			IP23 IC01 13KG							
DE	6203		ODE	6203						
ENCL	ODP	SN								
	IE2-50HZ 69(75%),61 (50%)									

AC Induction Motor Performance Data

Record # 101564

Typical performance - not guaranteed values

Winding: 34WGX075-R001		Type: 3424LC	Enclosure: OPEN	
Nameplate Data			220 V, 50 Hz: High Voltage Connection	
Rated Output (KW)	.37	Full Load Torque	1.809 LB-FT	
Volts	110/220	Start Configuration	direct on line	
Full Load Amps	5.2/2.6	Breakdown Torque	5.01 LB-FT	
R.P.M.	1440	Pull-up Torque	4.58 LB-FT	
Hz	50 Phase	1	Locked-rotor Torque	5.62 LB-FT
NEMA Design Code	- KVA Code	K	Starting Current	18.7 A
Service Factor (S.F.)	1.25	No-load Current	1.35 A	
NEMA Nom. Eff.	72.7 Power Factor	89	Line-line Res. @ 25°C	4.8685 Ω A Ph 4.0366 Ω B Ph
Rating - Duty	40C AMB-CONT	Temp. Rise @ Rated Load	43°C	
S.F. Amps	6.2/3.1	Temp. Rise @ S.F. Load	51°C	

Load Characteristics 220 V, 50 Hz, 0.37 KW

% of Rated Load	25	50	75	100	125	150	S.F.
Power Factor	65	78	85	89	92	93	92
Efficiency	43.9	61.4	69.7	73.2	74.3	73.7	74.3
Speed	1485.2	1474.4	1461.8	1448.3	1432.2	1413.8	1432
Line amperes	1.49	1.77	2.15	2.58	3.09	3.66	3.09

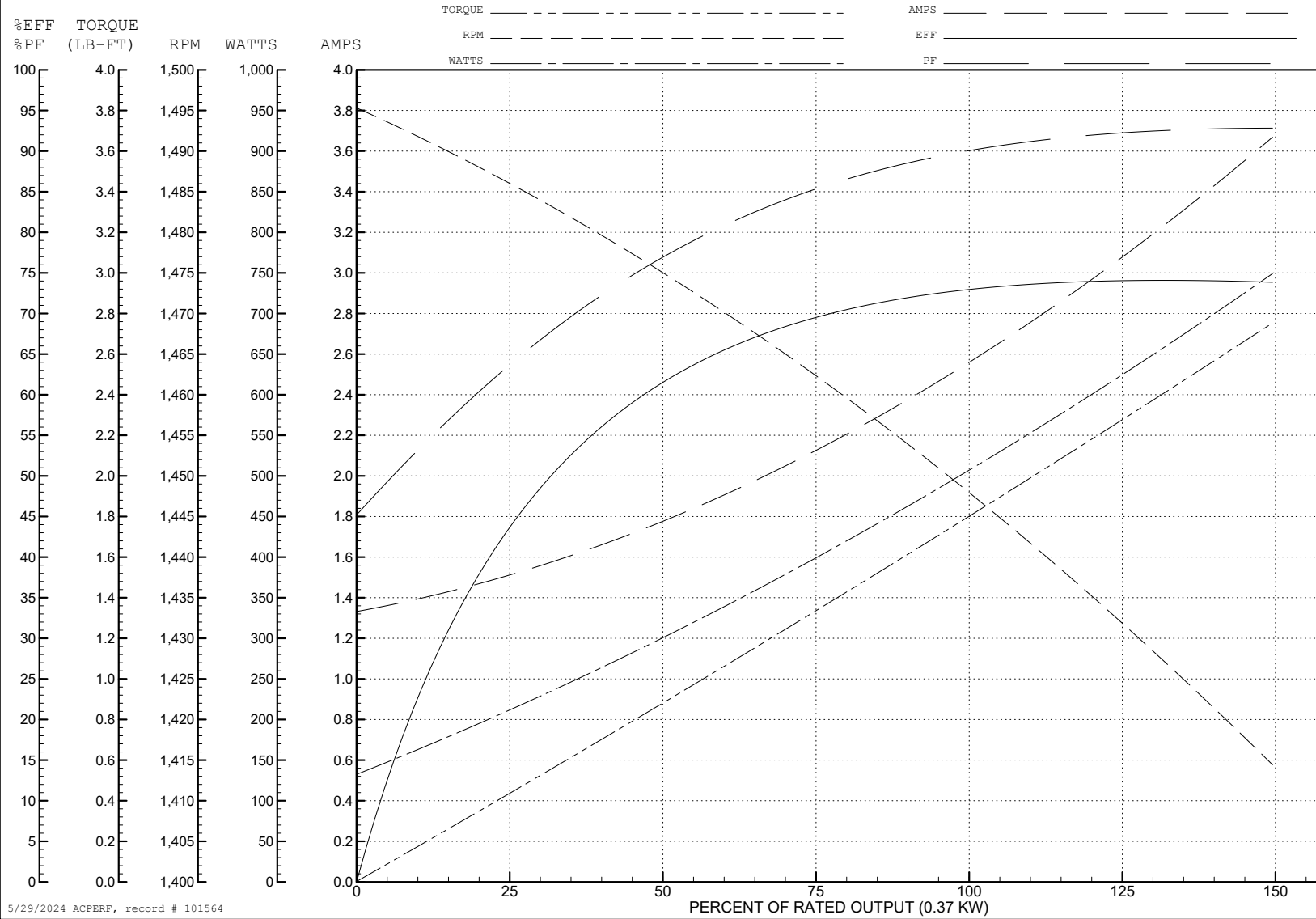
ABB Motors and Mechanical Inc.

WINDING # 34WGx075

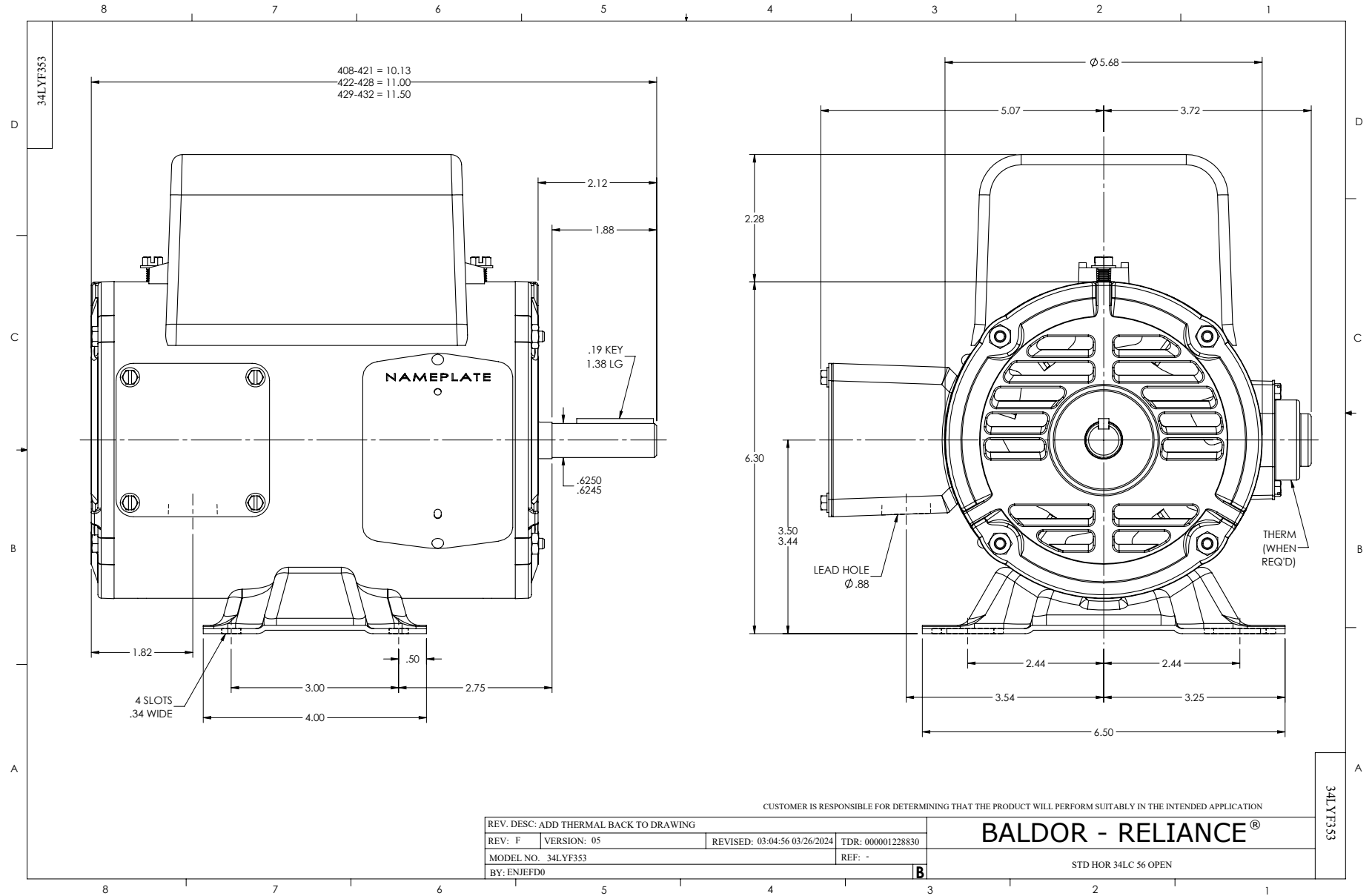
Typical performance - not guaranteed values.

0.37 KW 1 PH 50 HZ 1440 RPM 220 V 3424LC

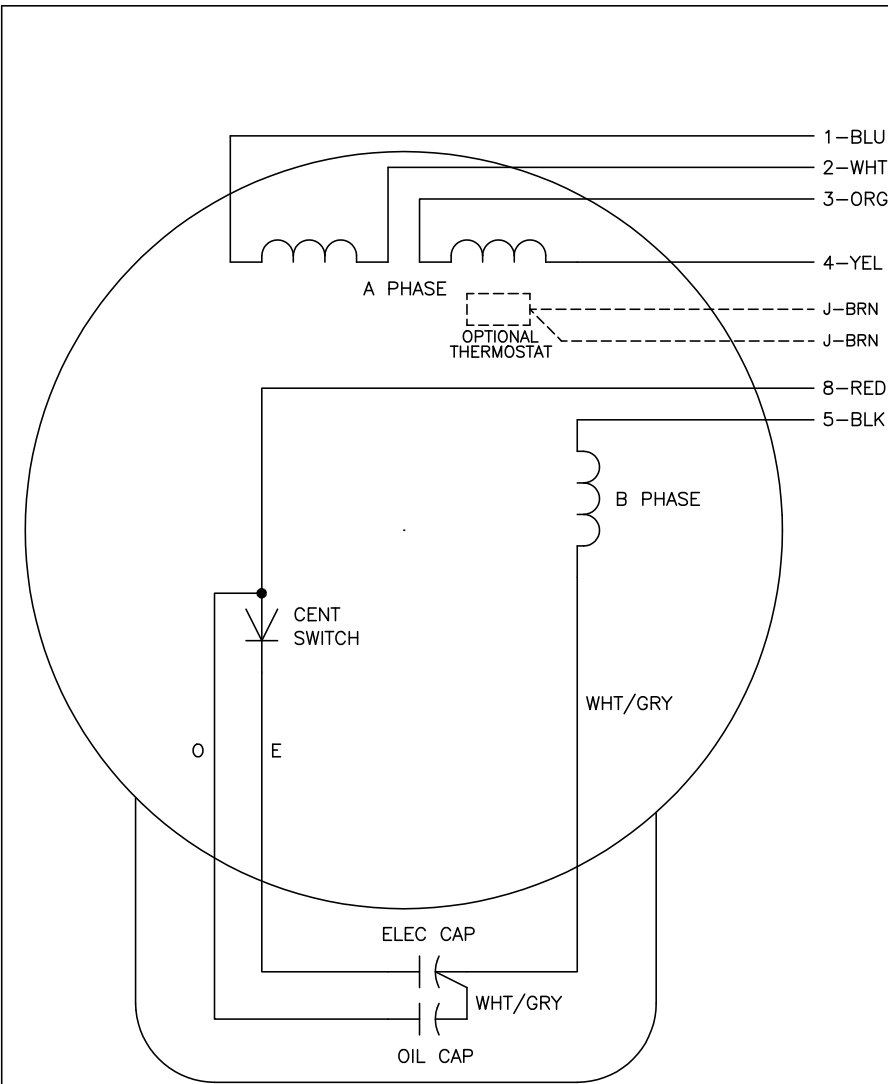
TORQUES (LB-FT): PO=5.01 PU=4.58 LR=5.62 LRA=18.7



5/29/2024 ACPERF, record # 101564



CD0055



	LINE A	LINE B	JOIN
HIGH STD	1	4,5	2,3,8
HIGH OPP	1	4,8	2,3,5
LOW STD	1,3,8	2,4,5	-
LOW OPP	1,3,5	2,4,8	-

NOTES:

1. STANDARD ROTATION IS CCW FACING END OPPOSITE SHAFT EXTENSION.
2. OPTIONAL THERMOSTAT IS PROVIDED WHEN SPECIFIED.
3. MULTIPLE CAPACITORS ARE CONNECTED IN PARALLEL UNLESS OTHERWISE SPECIFIED.
4. LEAD COLORS ARE OPTIONAL. LEADS MUST ALWAYS BE NUMBERED AS SHOWN.

REV. DESC: REVISE TO SHOW OPTIONAL COLORS			
REV. LTR: D	BY: JLP	REVISED: 04/08/99 1:17	TDR: 0178636
C00000		FILE: AAA00007414	MDL: -
		MTL: -	

BALDOR ELECTRIC Co.

TYPE LC, DV, REV, 6 LEADS

CD0055