

BALDOR • RELIANCE

Customer information packet

KEL11205A

.33HP, 3475RPM, 1PH, 60HZ, 56C, 3413LC, OPEN, F

Class - None

Division - Not Applicable

Specifications

Enclosure	OPEN
Frame	56C
Frame Material	Steel
Frequency	60.00 Hz
Haz Area Class and Group	None
Haz Area Division	Not Applicable
Motor Letter Type	Cap Start, Cap Run
Output @ Frequency	.330 HP @ 60 HZ
Phase	1
Synchronous Speed @ Frequency	3600 RPM @ 60 HZ
Voltage @ Frequency	230.0 V @ 60 HZ 115.0 V @ 60 HZ
Agency Approvals	CURUSEEV
Ambient Temperature	40 °C
Auxillary Box	No Auxillary Box
Auxillary Box Lead Termination	None
Base Indicator	No Mounting
Bearing Grease Type	Polyrex EM (-20F +300F)
Blower	None
Current @ Voltage	3.000 A @ 115.0 V 1.600 A @ 208.0 V 1.500 A @ 230.0 V
Design Code	N
Drip Cover	Drip Cover
Duty Rating	CONT
Efficiency @ 100% Load	70.5 %
Electrically Isolated Bearing	Not Electrically Isolated
Feedback Device	NO FEEDBACK
Front Face Code	Standard
Front Shaft Indicator	None
Heater Indicator	No Heater
High Voltage Full Load Amps	1.5 a

Part detail

Revision	H
Type	AC
Mech. spec.	34M524
Base	
Status	PRD/A
Elec. spec.	34WGR280
Layout	34LYM524
Eff. date	04-23-2021
CD Diagram	CD0320
Poles	02
Leads	7#18 Y
Proprietary	False
Created date	02-05-2015

Insulation Class	F
Inverter Code	Not Inverter
KVA Code	H
Lifting Lugs	No Lifting Lugs
Locked Bearing Indicator	Locked Bearing
Motor Lead Exit	Ko Box
Motor Lead Quantity/Wire Size	7 @ 18 AWG
Motor Lead Termination	Flying Leads
Motor Standards	NEMA
Motor Type	3413LC
Mounting Arrangement	F1
Number of Poles	2
Overall Length	12.66 IN
Power Factor	97
Product Family	General Purpose
Pulley End Bearing Type	Ball
Pulley Face Code	C-Face
Pulley Shaft Indicator	Standard
Rodent Screen	None
RoHS Status	ROHS COMPLIANT
Service Factor	1.35
Shaft Diameter	0.625 IN
Shaft Extension Location	Pulley End
Shaft Ground Indicator	No Shaft Grounding
Shaft Rotation	Reversible
Shaft Slinger Indicator	No Slinger
Speed	3475 rpm
Speed Code	Single Speed
Starting Method	Direct on line
Thermal Device - Bearing	None
Thermal Device - Winding	None
Vibration Sensor Indicator	No Vibration Sensor
Winding Thermal 1	Automatic Thermal Overload
Winding Thermal 1 Location	SB

Winding Thermal 2

None

Nameplate

NP3273L									
CAT.NO.	KEL11205A								
SPEC.	34M524R280G1								
HP	.33								
VOLTS	115/230								
AMP	3/1.5								
RPM	3475								
FRAME	56C	HZ	60	PH	1				
SER.F.	1.35	CODE	H	DES	N	CL	F		
F.L. AVG. EFF.	70.5	PF	97						
RATING	40C AMB-CONT								
CC							USABLE AT 208V	N/A	
DE	6203	ODE	6203						
ENCL	OPEN	SN							
	SFA 3.9/1.95								

AC Induction Motor Performance Data

Record # 49135

Typical performance - not guaranteed values

Winding: 34WGR280-R001		Type: 3413LC		Enclosure: OPEN	
Nameplate Data			115 V, 60 Hz: Low Voltage Connection		
Rated Output (HP)	.33	Full Load Torque	0.495 LB-FT		
Volts	115/230	Start Configuration	direct on line		
Full Load Amps	3/1.5	Breakdown Torque	1.37 LB-FT		
R.P.M.	3475	Pull-up Torque	1.11 LB-FT		
Hz	60 Phase	1	Locked-rotor Torque	1.63 LB-FT	
NEMA Design Code	N KVA Code	H	Starting Current	21.7 A	
Service Factor (S.F.)	1.35		No-load Current	0.91 A	
NEMA Nom. Eff.	70.5 Power Factor	97	Line-line Res. @ 25°C	1.8711 Ω A Ph 3.6847 Ω B Ph	
Rating - Duty	40C AMB-CONT		Temp. Rise @ Rated Load	14°C	
S.F. Amps	3.9/1.95		Temp. Rise @ S.F. Load	17°C	

Load Characteristics 115 V, 60 Hz, 0.33 HP

% of Rated Load	25	50	75	100	125	150	S.F.
Power Factor	97	98	98	99	99	98	99
Efficiency	43.3	61.5	70.3	74.5	76.4	77.7	76.9
Speed	3567.1	3549.9	3526.5	3501.3	3474.4	3445.4	3463
Line amperes	1.29	1.76	2.32	2.91	3.54	4.2	3.8

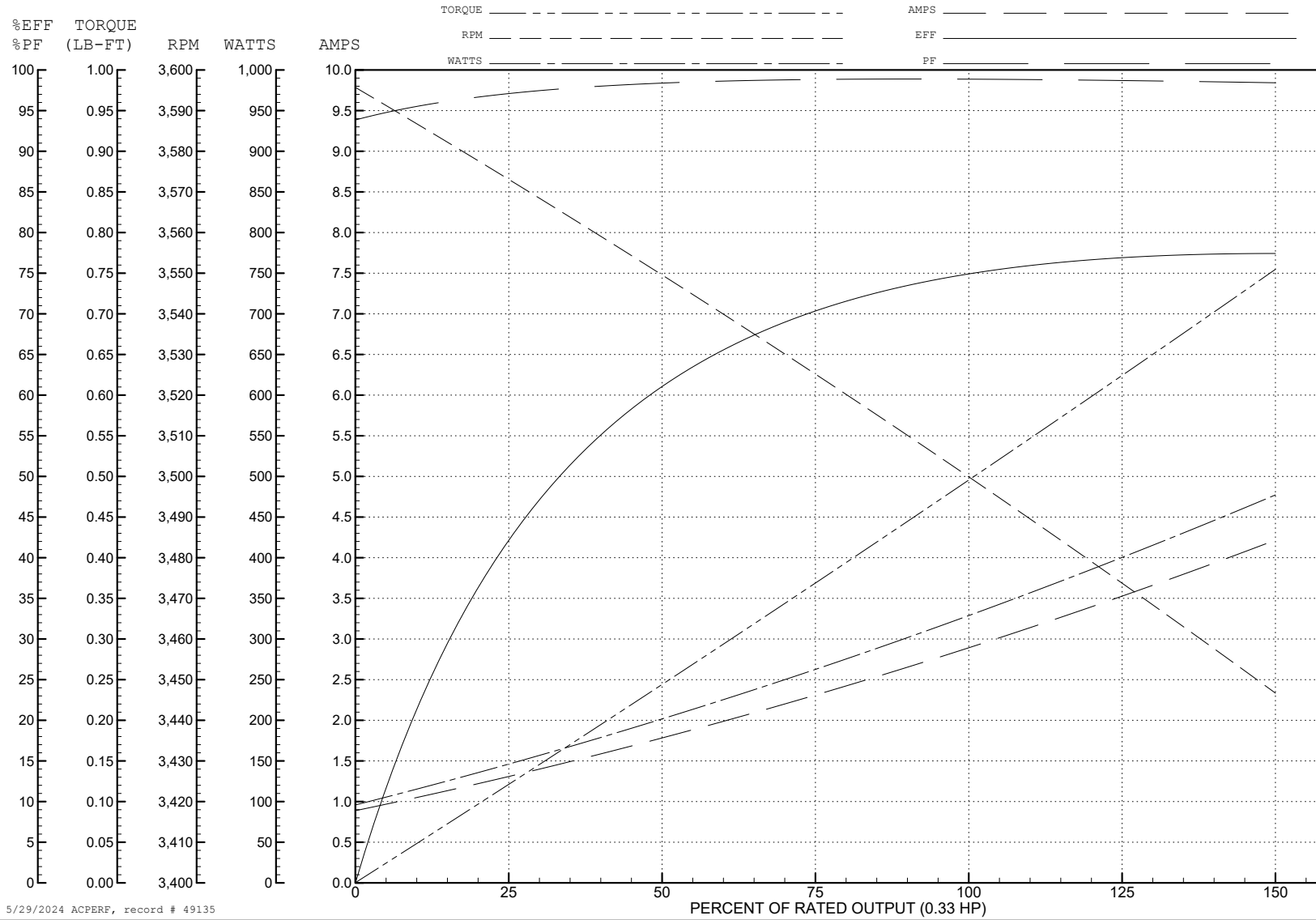
ABB Motors and Mechanical Inc.

WINDING # 34WGR280

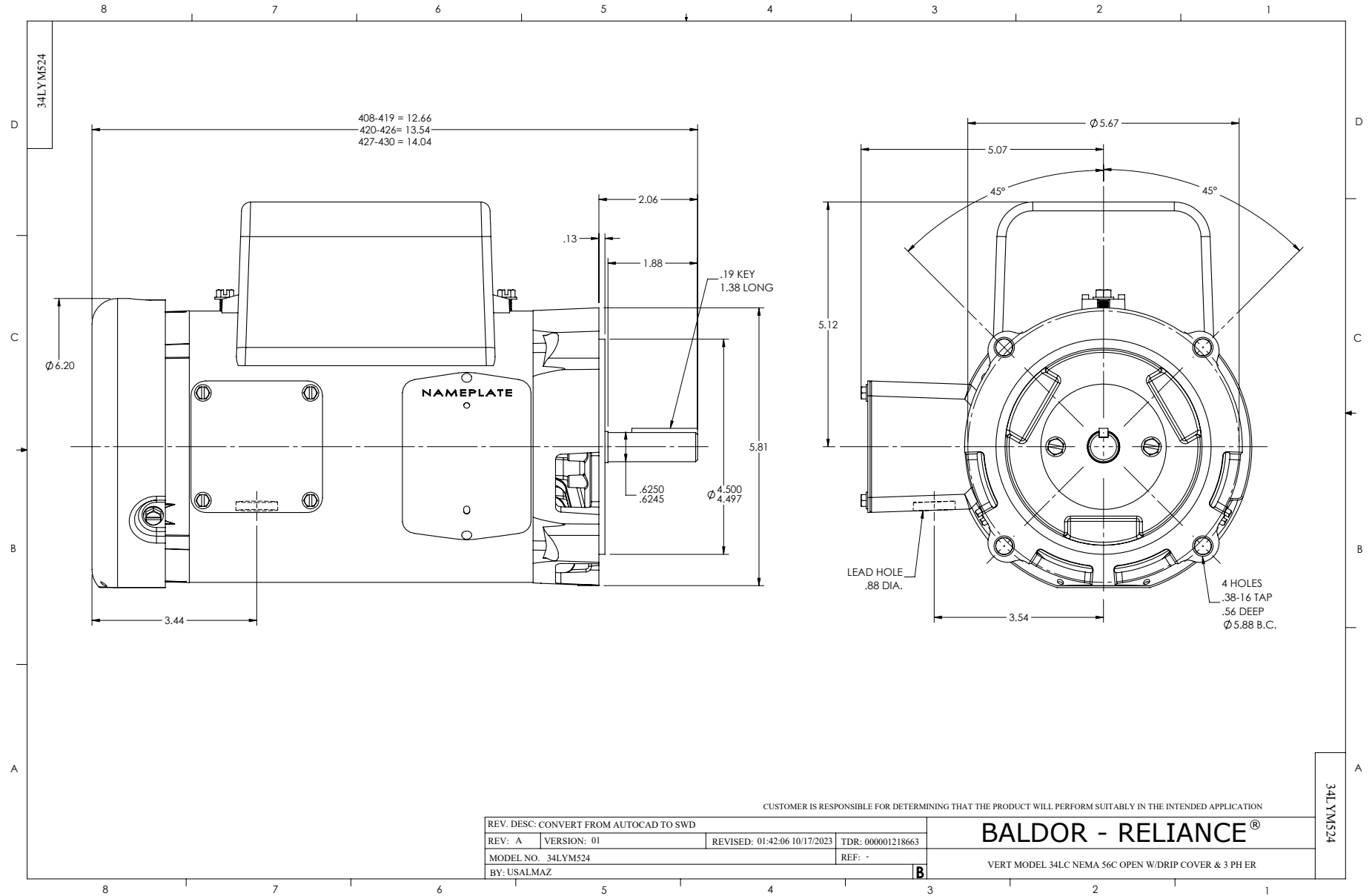
Typical performance - not guaranteed values.

0.33 HP 1 PH 60 HZ 3475 RPM 115 V 3413LC

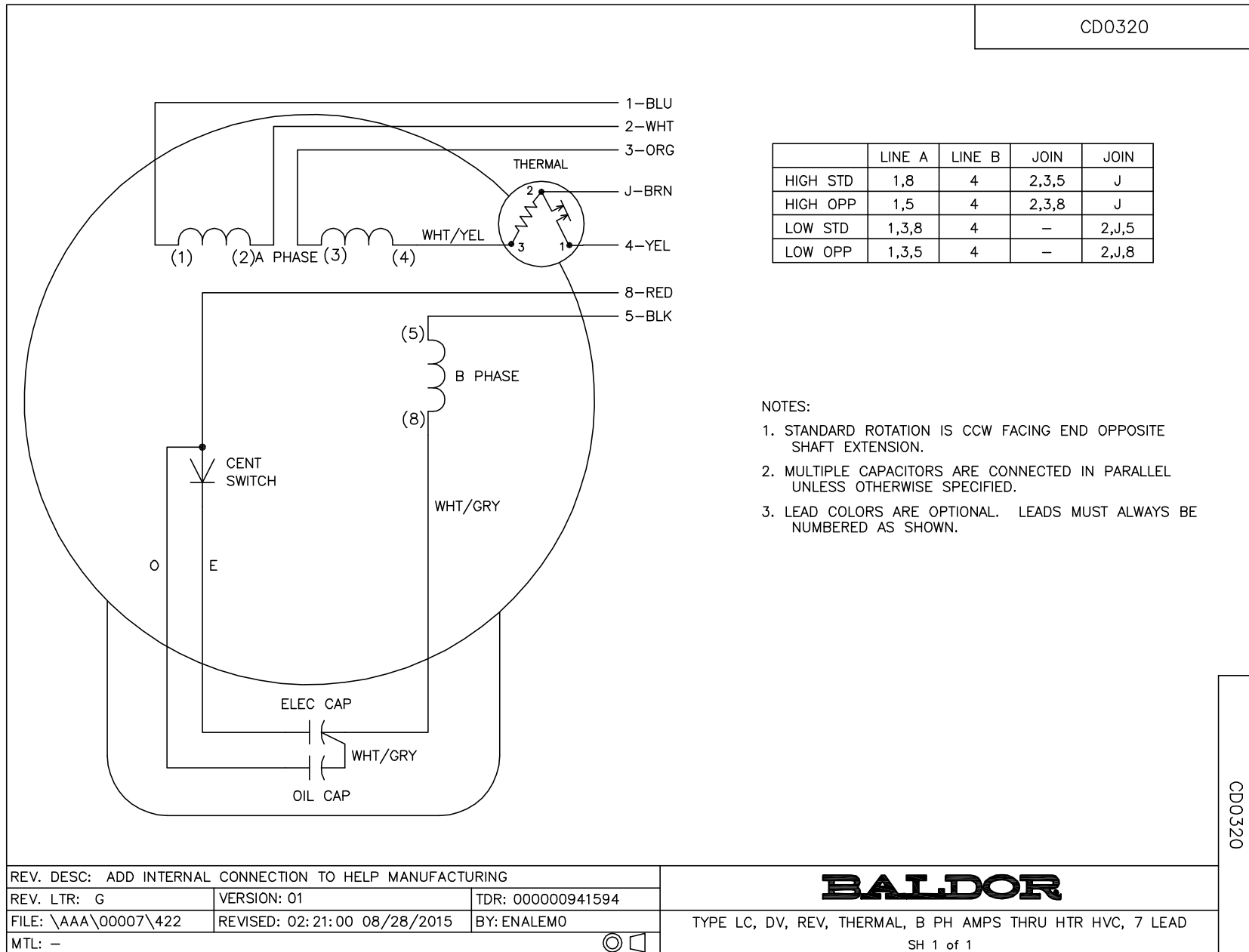
TORQUES (LB-FT): PO=1.37 PU=1.11 LR=1.63 LRA=21.7



5/29/2024 ACPERF, record # 49135



CD0320



	LINE A	LINE B	JOIN	JOIN
HIGH STD	1,8	4	2,3,5	J
HIGH OPP	1,5	4	2,3,8	J
LOW STD	1,3,8	4	-	2,J,5
LOW OPP	1,3,5	4	-	2,J,8

NOTES:

1. STANDARD ROTATION IS CCW FACING END OPPOSITE SHAFT EXTENSION.
2. MULTIPLE CAPACITORS ARE CONNECTED IN PARALLEL UNLESS OTHERWISE SPECIFIED.
3. LEAD COLORS ARE OPTIONAL. LEADS MUST ALWAYS BE NUMBERED AS SHOWN.

CD0320

REV. DESC: ADD INTERNAL CONNECTION TO HELP MANUFACTURING		
REV. LTR: G	VERSION: 01	TDR: 00000941594
FILE: \AAA\00007\422	REVISED: 02:21:00 08/28/2015	BY: ENALEMO
MTL: -		© □

BALDOR

TYPE LC, DV, REV, THERMAL, B PH AMPS THRU HTR HVC, 7 LEAD
SH 1 of 1