



Customer information packet

EPCL1322M

2HP, 1725RPM, 1PH, 60HZ, 56C, 3546LC, OPEN, F1

Class - None

Division - Not Applicable

Specifications

Enclosure	OPEN
Frame	56C
Frame Material	Steel
Frequency	60.00 Hz
Haz Area Class and Group	None
Haz Area Division	Not Applicable
Motor Letter Type	Cap Start, Cap Run
Output @ Frequency	2.000 HP @ 60 HZ
Phase	1
Synchronous Speed @ Frequency	1800 RPM @ 60 HZ
Voltage @ Frequency	230.0 V @ 60 HZ 115.0 V @ 60 HZ
Agency Approvals	CSA CURUSEEV UR
Ambient Temperature	40 °C
Auxillary Box	No Auxillary Box
Auxillary Box Lead Termination	None
Base Indicator	Rigid
Bearing Grease Type	Polyrex EM (-20F +300F)
Blower	None
Current @ Voltage	8.200 A @ 230.0 V 9.400 A @ 208.0 V 16.400 A @ 115.0 V
Design Code	L
Drip Cover	No Drip Cover
Duty Rating	CONT
Efficiency @ 100% Load	84.5 %
Electrically Isolated Bearing	Not Electrically Isolated
Feedback Device	NO FEEDBACK
Front Face Code	Standard
Front Shaft Indicator	None

Part detail

Revision	P
Type	AC
Mech. spec.	35K267
Base	
Status	PRD/A
Elec. spec.	35WGL139
Layout	35LYK267
Eff. date	05-14-2024
CD Diagram	CD0320
Poles	04
Leads	6#16,1#14 #4TH
Proprietary	False
Created date	09-15-2014

Heater Indicator	No Heater
High Voltage Full Load Amps	8.2 a
Insulation Class	F
Inverter Code	Not Inverter
KVA Code	K
Lifting Lugs	No Lifting Lugs
Locked Bearing Indicator	Locked Bearing
Motor Lead Exit	Ko Box
Motor Lead Quantity/Wire Size	6 @ 16 AWG
Motor Lead Termination	Flying Leads
Motor Standards	NEMA
Motor Type	3546LC
Mounting Arrangement	F1
Number of Poles	4
Overall Length	14.32 IN
Power Factor	93
Product Family	General Purpose
Pulley End Bearing Type	Ball
Pulley Face Code	C-Face
Pulley Shaft Indicator	Standard
Rodent Screen	None
Service Factor	1.15
Shaft Diameter	0.625 IN
Shaft Extension Location	Pulley End
Shaft Ground Indicator	No Shaft Grounding
Shaft Rotation	Reversible
Shaft Slinger Indicator	No Slinger
Speed	1725 rpm
Speed Code	Single Speed
Starting Method	Direct on line
Thermal Device - Bearing	None
Thermal Device - Winding	Do Not Use
Vibration Sensor Indicator	No Vibration Sensor
Winding Thermal 1	Manual Thermal Overload

Winding Thermal 1 Location

KO

Winding Thermal 2

None

Nameplate

NP3432L									
CAT.NO.	EPCL1322M								
SPEC.	35K267L139G1								
HP	2								
VOLTS	115/230								
AMP	16.4/8.2								
RPM	1725								
FRAME	56C		HZ	60		PH	1		
SER.F.	1.15	CODE	K	DES	L	CL	F		
F.L. AVG. EFF.	84.5	PF	93						
RATING	40C AMB-CONT								
CC			USABLE AT 208V				N/A		
DE	6205		ODE	6203					
ENCL	OPEN	SN							

AC Induction Motor Performance Data

Record # 62085

Typical performance - not guaranteed values

Winding: 35WGL139-R002		Type: 3546LC	Enclosure: OPEN	
Nameplate Data			115 V, 60 Hz: Low Voltage Connection	
Rated Output (HP)	2	Full Load Torque	5.97 LB-FT	
Volts	115/230	Start Configuration	direct on line	
Full Load Amps	16.4/8.2	Breakdown Torque	18.2 LB-FT	
R.P.M.	1725	Pull-up Torque	12 LB-FT	
Hz	60 Phase	1	Locked-rotor Torque	16.4 LB-FT
NEMA Design Code	L KVA Code	K	Starting Current	144 A
Service Factor (S.F.)	1.15	No-load Current	5.01 A	
NEMA Nom. Eff.	84.5 Power Factor	93	Line-line Res. @ 25°C	0.28439 Ω A Ph 1.2353 Ω B Ph
Rating - Duty	40C AMB-CONT	Temp. Rise @ Rated Load	65°C	
S.F. Amps		Temp. Rise @ S.F. Load	79°C	

Load Characteristics 115 V, 60 Hz, 2 HP

% of Rated Load	25	50	75	100	125	150	S.F.
Power Factor	70	84	90	92	94	94	93
Efficiency	72.3	82.8	85.4	85.7	84.5	82	85
Speed	1790.5	1781.9	1771.8	1760.8	1748.8	1733.3	1754
Line amperes	6.42	9.24	12.6	16.3	20.4	25.3	18.8

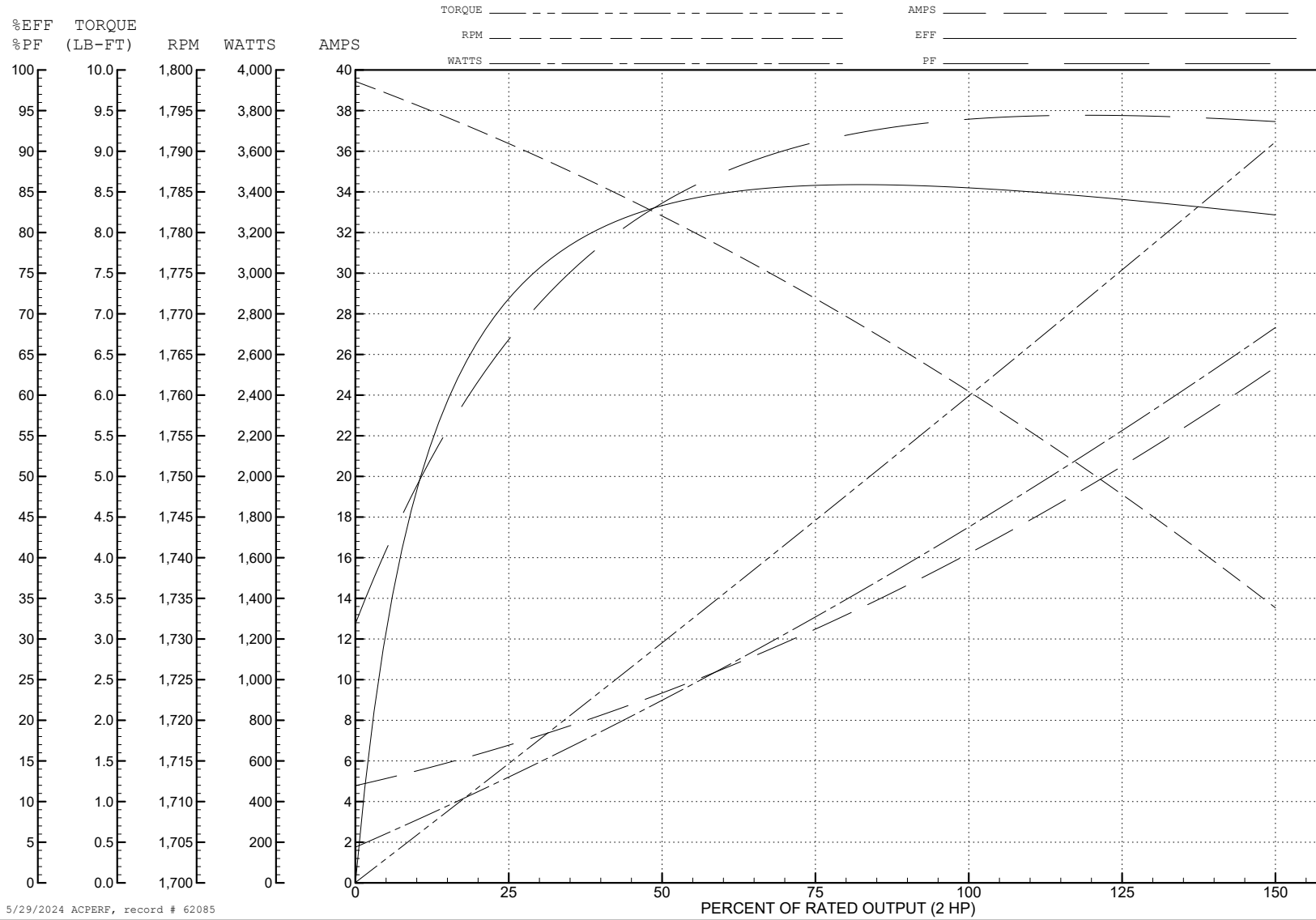
ABB Motors and Mechanical Inc.

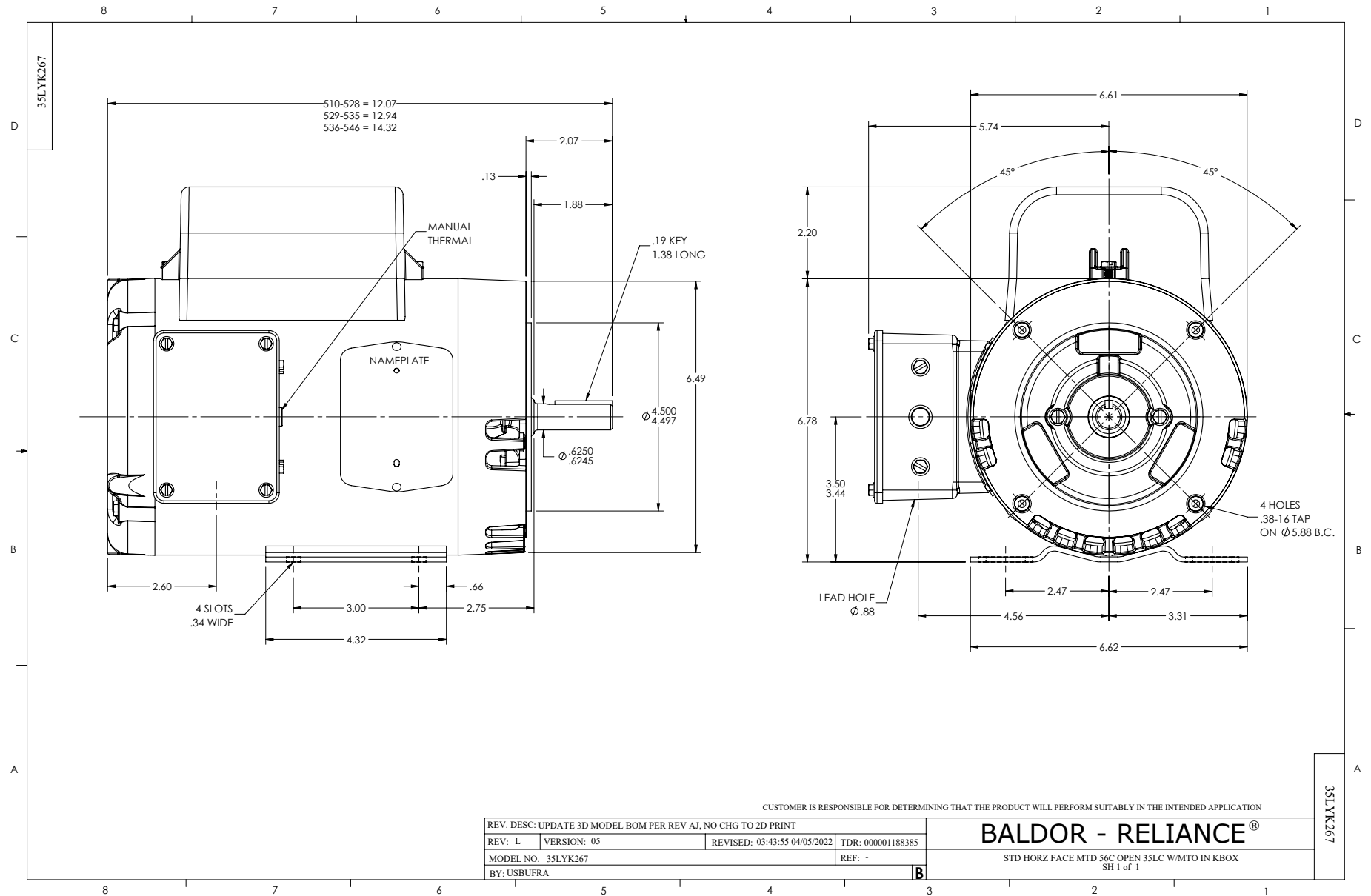
WINDING # 35WGL139

Typical performance - not guaranteed values.

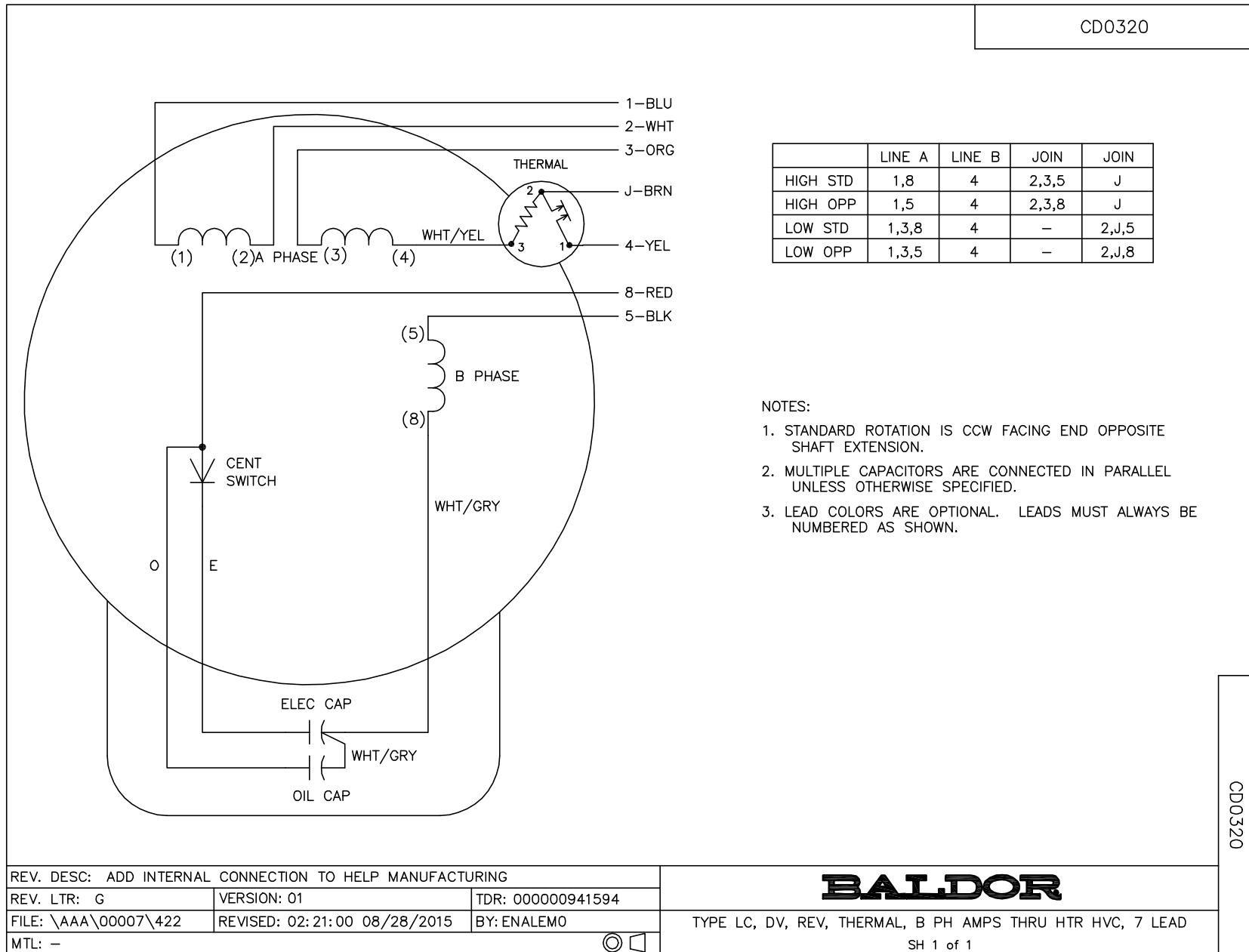
2 HP 1 PH 60 HZ 1725 RPM 115 V 3546LC

TORQUES (LB-FT): PO=18.2 PU=12 LR=16.4 LRA=144





CD0320



CD0320

REV. DESC: ADD INTERNAL CONNECTION TO HELP MANUFACTURING		
REV. LTR: G	VERSION: 01	TDR: 00000941594
FILE: \AAA\00007\422	REVISED: 02:21:00 08/28/2015	BY: ENALEMO
MTL: -	© □	

BALDOR

TYPE LC, DV, REV, THERMAL, B PH AMPS THRU HTR HVC, 7 LEAD
SH 1 of 1