



---

# Customer information packet

## EM3615T-8

5HP, 1750RPM, 3PH, 60HZ, 184T, 3642M, TEFC, F1

Class - None

Division - Not Applicable

## Specifications

Enclosure	TEFC
Frame	184T
Frame Material	Steel
Frequency	60.00 Hz
Motor Letter Type	Three Phase
Output @ Frequency	5.000 HP @ 60 HZ
Phase	3
Synchronous Speed @ Frequency	1800 RPM @ 60 HZ
Voltage @ Frequency	200.0 V @ 60 HZ
XP Class and Group	None
XP Division	Not Applicable
Agency Approvals	CURUSEEV NEMA PREMIUM NEMA_PREMIUM UR CSA EEV
Ambient Temperature	40 °C
Auxillary Box	No Auxillary Box
Auxillary Box Lead Termination	None
Base Indicator	Rigid
Bearing Grease Type	Polyrex EM (-20F +300F)
Blower	None
Current @ Voltage	15.200 A @ 200.0 V
Design Code	B
Drip Cover	No Drip Cover
Duty Rating	CONT
Efficiency @ 100% Load	89.5 %
Electrically Isolated Bearing	Not Electrically Isolated
Feedback Device	NO FEEDBACK
Front Face Code	Standard
Front Shaft Indicator	None
Heater Indicator	No Heater

## Part detail

Revision	D
Type	AC
Mech. spec.	36A001
Base	
Status	PRD/A
Elec. spec.	36WGS589
Layout	36LYA001
Eff. date	07-14-2022
CD Diagram	CD0006
Poles	04
Leads	3#14
Proprietary	False
Created date	08-07-2015

High Voltage Full Load Amps	15.2 a
Insulation Class	F
Inverter Code	Inverter Ready
KVA Code	J
Lifting Lugs	Standard Lifting Lugs
Locked Bearing Indicator	No Locked Bearing
Motor Lead Exit	Ko Box
Motor Lead Quantity/Wire Size	3 @ 14 AWG
Motor Lead Termination	Flying Leads
Motor Standards	NEMA
Motor Type	3642M
Mounting Arrangement	F1
Number of Poles	4
Overall Length	18.04 IN
Power Factor	78
Product Family	General Purpose
Pulley End Bearing Type	Ball
Pulley Face Code	Standard
Pulley Shaft Indicator	Standard
Rodent Screen	None
Service Factor	1.15
Shaft Diameter	1.125 IN
Shaft Extension Location	Pulley End
Shaft Ground Indicator	No Shaft Grounding
Shaft Rotation	Reversible
Shaft Slinger Indicator	No Slinger
Speed	1750 rpm
Speed Code	Single Speed
Starting Method	Direct on line
Thermal Device - Bearing	None
Thermal Device - Winding	None
Vibration Sensor Indicator	No Vibration Sensor
Winding Thermal 1	None
Winding Thermal 2	None

**Nameplate**

<b>NP3441L</b>									
<b>CAT.NO.</b>	EM3615T-8								
<b>SPEC.</b>	36A001S589G3								
<b>HP</b>	5								
<b>VOLTS</b>	200								
<b>AMP</b>	15.2								
<b>RPM</b>	1750								
<b>FRAME</b>	184T		<b>HZ</b>	60		<b>PH</b>	3		
<b>SER.F.</b>	1.15	<b>CODE</b>	J	<b>DES</b>	B	<b>CL</b>	F		
<b>NEMA-NOM-EFF</b>	89.5	<b>PF</b>	78						
<b>RATING</b>	40C AMB-CONT								
<b>CC</b>	010A		<b>USABLE AT 208V</b>				N/A		
<b>DE</b>	6206		<b>ODE</b>	6205					
<b>ENCL</b>	TEFC	<b>SN</b>							
<b>VPWM INVERTER READY</b>									
<b>CT6-60H(10:1)VT3-60H(20:1)</b>									

**AC Induction Motor Performance Data**

Record # 49315

Typical performance - not guaranteed values

<b>Winding: 36WGS589-R003</b>		<b>Type: 3642M</b>		<b>Enclosure: TEFC</b>	
<b>Nameplate Data</b>			<b>200 V, 60 Hz: Single Voltage Motor</b>		
<b>Rated Output (HP)</b>	5	<b>Full Load Torque</b>	14.9 LB-FT		
<b>Volts</b>	200	<b>Start Configuration</b>	direct on line		
<b>Full Load Amps</b>	15.2	<b>Breakdown Torque</b>	51.1 LB-FT		
<b>R.P.M.</b>	1750	<b>Pull-up Torque</b>	30.8 LB-FT		
<b>Hz</b>	60	<b>Locked-rotor Torque</b>	34.1 LB-FT		
<b>NEMA Design Code</b>	B	<b>Starting Current</b>	111 A		
<b>Service Factor (S.F.)</b>	1.15	<b>No-load Current</b>	7.29 A		
<b>NEMA Nom. Eff.</b>	89.5	<b>Line-line Res. @ 25°C</b>	0.447 Ω		
<b>Rating - Duty</b>	40C	<b>Temp. Rise @ Rated Load</b>	72°C		
<b>S.F. Amps</b>	AMB-CONT	<b>Temp. Rise @ S.F. Load</b>	87°C		
		<b>Locked-rotor Power Factor</b>	40.2		
		<b>Rotor inertia</b>	0.391 LB-FT <sup>2</sup>		

**Load Characteristics 200 V, 60 Hz, 5 HP**

<b>% of Rated Load</b>	<b>25</b>	<b>50</b>	<b>75</b>	<b>100</b>	<b>125</b>	<b>150</b>	<b>S.F.</b>
<b>Power Factor</b>	39	61	72	79	83	84	81
<b>Efficiency</b>	85.2	89.7	90.4	89.4	88.4	86.7	88.8
<b>Speed</b>	1789	1776	1762	1749	1732	1713	1739
<b>Line amperes</b>	8.02	9.79	12.4	15.2	18.2	22.2	17

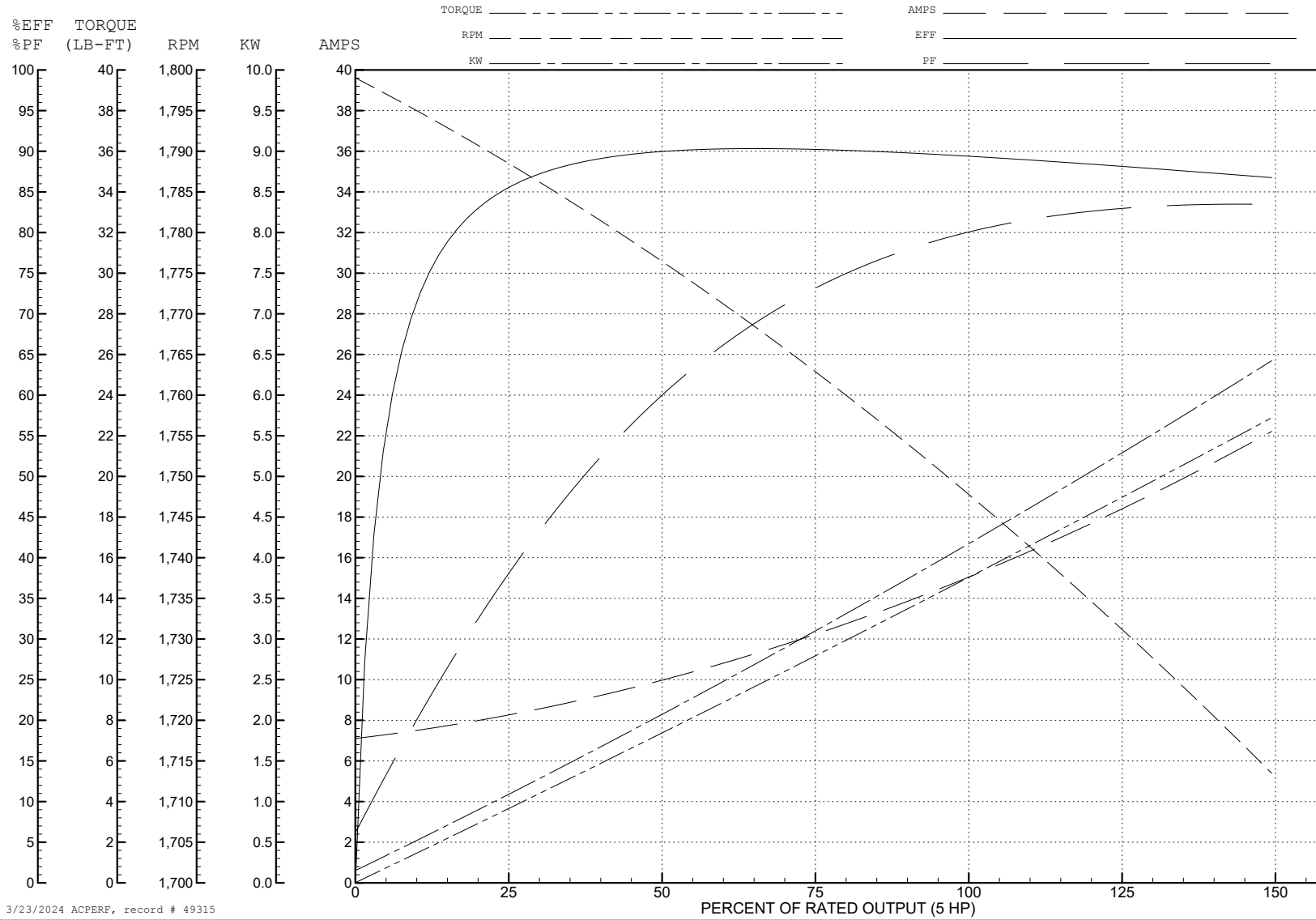
ABB Motors and Mechanical Inc.

WINDING # 36WGS589

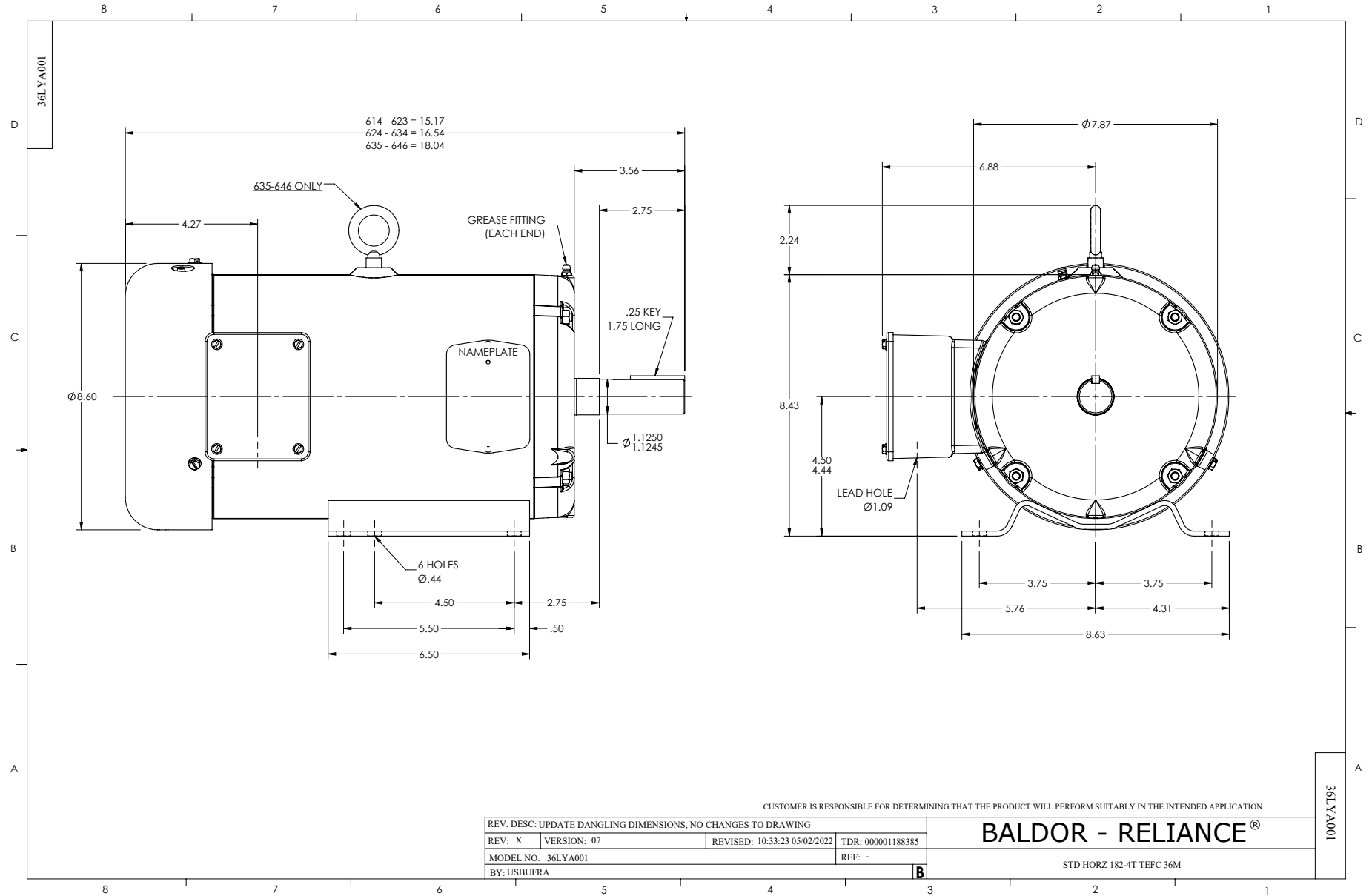
5 HP 3 PH 60 HZ 1750 RPM 200 V 3642M

Typical performance - not guaranteed values.

TORQUES (LB-FT): PO=51.1 PU=30.8 LR=34.1 LRA=111



3/23/2024 ACPERF, record # 49315



CUSTOMER IS RESPONSIBLE FOR DETERMINING THAT THE PRODUCT WILL PERFORM SUITABLY IN THE INTENDED APPLICATION

REV. DESC: UPDATE DANGLING DIMENSIONS, NO CHANGES TO DRAWING			
REV: X	VERSION: 07	REVISED: 10:33:23 05/02/2022	TDR: 000001188385
MODEL NO. 36LYA001		REF: -	
BY: USBUFRA		B	

**BALDOR - RELIANCE®**

STD HORZ 182-4T TEFC 36M

36LYA001

CD0006



NOTES:

1. THREE LEAD MOTOR MAY BE EITHER WYE CONNECTED OR DELTA CONNECTED.
2. INTERCHANGE ANY TWO LINE LEADS TO REVERSE ROTATION.
3. OPTIONAL THERMOSTATS ARE PROVIDED WHEN SPECIFIED.
4. ACTUAL NUMBER OF INTERNAL PARALLEL CIRCUITS MAY VARY.
5. LEAD COLORS ARE OPTIONAL. LEADS MUST BE NUMBERED AS SHOWN.

CD0006

REV. DESC: ADD CLASS CONN00000007		
REV. LTR: E	VERSION: 01	TDR: 000001099922
FILE: \AAA\00005\141	REVISED: 10:24:49 02/19/2019	BY: ENBRIRO
MTL: -	© □	

**BALDOR - RELIANCE®**

3PH, SV, 3 LEADS, WYE OR DELTA CONNECTED

SH 1 of 1