



Customer information packet

EM3558T

2HP, 1760RPM, 3PH, 60HZ, 145T, 3528M, TEFC, F1

Class - None

Division - Not Applicable

Specifications

Enclosure	TEFC
Frame	145T
Frame Material	Steel
Frequency	60.00 Hz
Motor Letter Type	Three Phase
Output @ Frequency	2.000 HP @ 60 HZ
Phase	3
Synchronous Speed @ Frequency	1800 RPM @ 60 HZ
Voltage @ Frequency	230.0 V @ 60 HZ 460.0 V @ 60 HZ
XP Class and Group	None
XP Division	Not Applicable
Agency Approvals	CSA EEV NEMA PREMIUM NEMA_PREMIUM UR
Ambient Temperature	40 °C
Auxillary Box	No Auxillary Box
Auxillary Box Lead Termination	None
Base Indicator	Rigid
Bearing Grease Type	Polyrex EM (-20F +300F)
Blower	None
Current @ Voltage	5.800 A @ 208.0 V 5.600 A @ 230.0 V 2.800 A @ 460.0 V
Design Code	B
Drip Cover	No Drip Cover
Duty Rating	CONT
Efficiency @ 100% Load	86.5 %
Electrically Isolated Bearing	Not Electrically Isolated
Feedback Device	NO FEEDBACK
Front Shaft Indicator	None

Part detail

Revision	G
Type	AC
Mech. spec.	35AA001
Base	
Status	PRD/A
Elec. spec.	35WGG073
Layout	35LYAA001
Eff. date	10-27-2022
CD Diagram	CD0005
Poles	04
Leads	9#18
Proprietary	False
Created date	07-16-2021

Heater Indicator	No Heater
High Voltage Full Load Amps	2.8 a
Insulation Class	F
Inverter Code	Inverter Ready
KVA Code	K
Lifting Lugs	No Lifting Lugs
Locked Bearing Indicator	No Locked Bearing
Motor Lead Quantity/Wire Size	9 @ 18 AWG
Motor Lead Termination	Flying Leads
Motor Standards	NEMA
Motor Type	3528M
Mounting Arrangement	F1
Number of Poles	4
Overall Length	13.28 IN
Power Factor	77
Product Family	General Purpose
Pulley End Bearing Type	Ball
Pulley Face Code	Standard
Pulley Shaft Indicator	Standard
Rodent Screen	None
Service Factor	1.15
Shaft Diameter	0.875 IN
Shaft Ground Indicator	No Shaft Grounding
Shaft Rotation	Reversible
Shaft Slinger Indicator	No Slinger
Speed	1760 rpm
Speed Code	Single Speed
Starting Method	Direct on line
Thermal Device - Bearing	None
Thermal Device - Winding	None
Vibration Sensor Indicator	No Vibration Sensor
Winding Thermal 1	None
Winding Thermal 2	None

Nameplate

NP3441LUA

CAT.NO.							
SPEC	35AA001G073G1						
HP	2						
VOLTS	230/460						
AMPS	5.6/2.8						
RPM	1760						
FRAME	145T		HZ	60		PH	3
SF	1.15	CODE	K	DES	B	CLASS	F
NEMA NOM. EFF	86.5	PF	77				
RATING	40C AMB-CONT						
CC	010A	USABLE AT 208V				N/A	
ENCL	TEFC	SER					
DE	6205	ODE	6203				
VPWM INVERTER READY	SFA 6.26/3.13						
CT6-60H(10:1)VT3-60H(20:1)	2HP 50HZ 190/380V 6.6/3.3A						SF1.0

Accessories

Part number	Description	Multiplier
35-8762	C FACE KIT	A8
35EP1506A01SP	D-FLANGE KIT	A8

AC Induction Motor Performance Data

Record # 87157

Typical performance - not guaranteed values

Winding: 35WGG073-R001		Type: 3528M	Enclosure: TEFC	
Nameplate Data			460 V, 60 Hz: High Voltage Connection	
Rated Output (HP)	2	Full Load Torque	5.99 LB-FT	
Volts	230/460	Start Configuration	direct on line	
Full Load Amps	5.6/2.8	Breakdown Torque	20.5 LB-FT	
R.P.M.	1760	Pull-up Torque	13.8 LB-FT	
Hz	60 Phase	Locked-rotor Torque	15 LB-FT	
NEMA Design Code	B KVA Code	Starting Current	22.5 A	
Service Factor (S.F.)	1.15	No-load Current	1.62 A	
NEMA Nom. Eff.	86.5 Power Factor	Line-line Res. @ 25°C	9.54 Ω	
Rating - Duty	40C AMB-CONT	Temp. Rise @ Rated Load	64°C	
S.F. Amps	6.3/3.15	Temp. Rise @ S.F. Load	77°C	
		Locked-rotor Power Factor	57.9	
		Rotor inertia	0.202 lb-ft ²	

Load Characteristics 460 V, 60 Hz, 2 HP

% of Rated Load	25	50	75	100	125	150	S.F.
Power Factor	35	55	68	76	81	84	80
Efficiency	78.3	85.3	86.9	86.5	85.3	83.6	86.1
Speed	1791	1782	1771	1760	1748	1734	1754
Line amperes	1.71	1.97	2.34	2.82	3.36	3.97	3.13

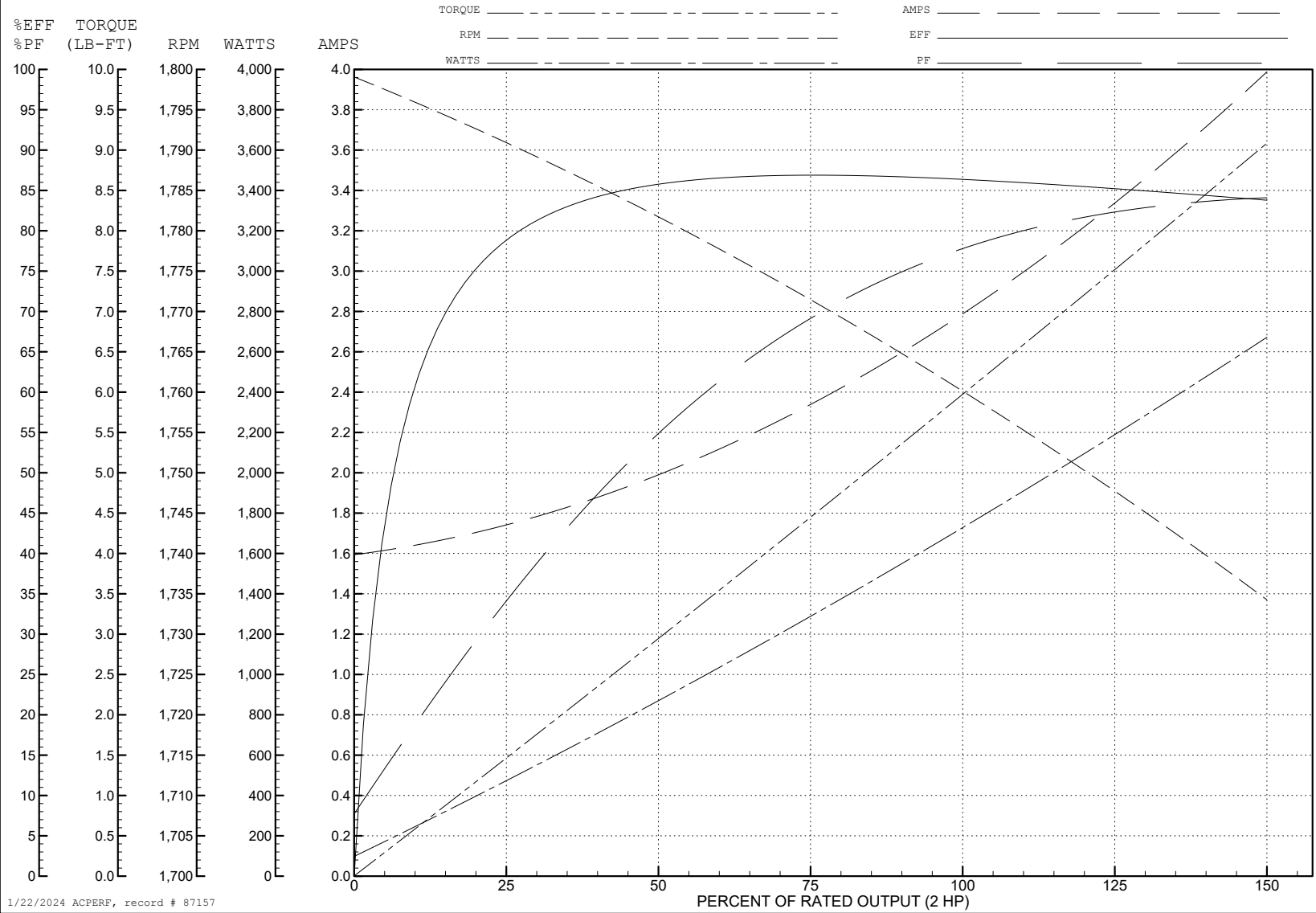
ABB Motors and Mechanical Inc.

WINDING # 35WGG073

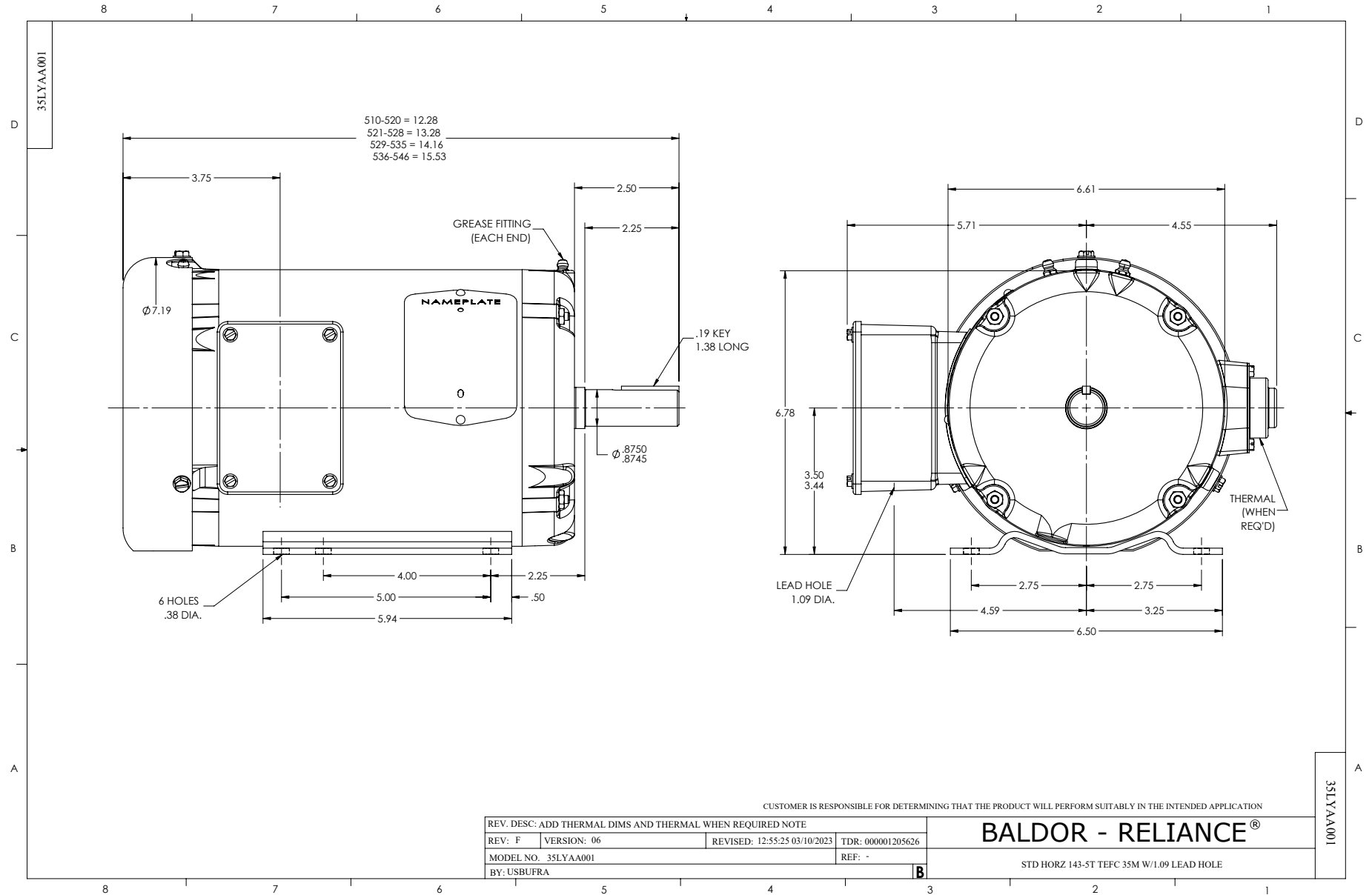
Typical performance - not guaranteed values.

2 HP 3 PH 60 HZ 1760 RPM 460 V 3528M

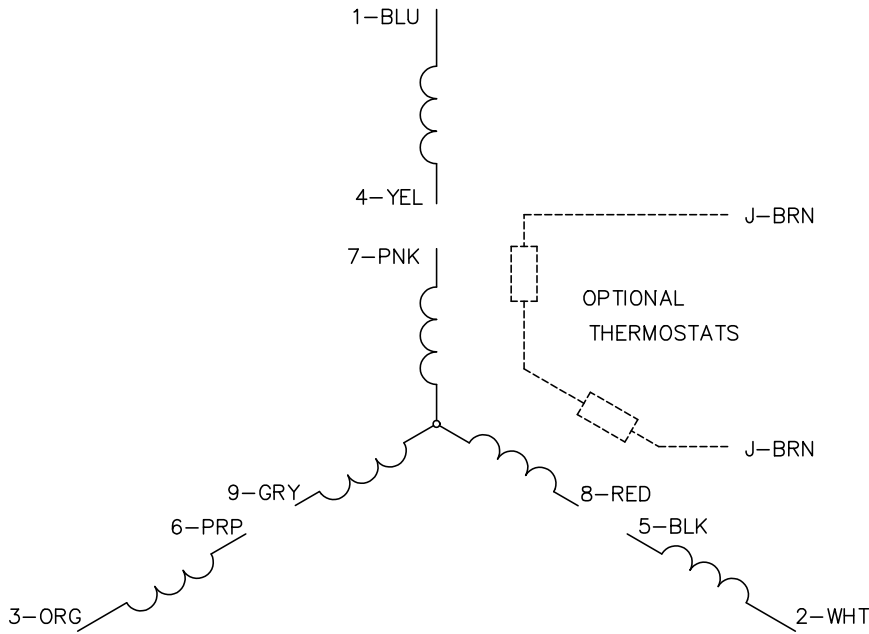
TORQUES (LB-FT): PO=20.5 PU=13.8 LR=15 LRA=22.5



1/22/2024 ACPERF, record # 87157



CD0005

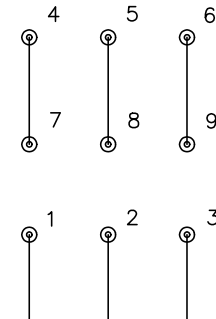


LOW VOLTAGE (2Y)



LINE

HIGH VOLTAGE (1Y)



LINE

NOTES:

1. INTERCHANGE ANY TWO LINE LEADS TO REVERSE ROTATION.
2. OPTIONAL THERMOSTATS ARE PROVIDED WHEN SPECIFIED.
3. ACTUAL NUMBER OF INTERNAL PARALLEL CIRCUITS MAY BE A MULTIPLE OF THOSE SHOWN ABOVE.
4. LEAD COLORS ARE OPTIONAL. LEADS MUST ALWAYS BE NUMBERED AS SHOWN.

CD0005

REV. DESC: REVISE TO SHOW OPTIONAL COLORS			
REV. LTR: E	BY: JLP	REVISED: 01/19/99 10:15	TDR: 0171435
S00000		FILE: AAA00005140	MDL: -
		MTL: -	

BALDOR ELECTRIC Co.

3PH, DV, 9 LEADS