

**BALDOR • RELIANCE**

---

# Customer information packet

## EM3558T-57

2/1.5KWHP, 1460RPM, 3PH, 50HZ, 145T, 3528M, TE

Class - None

Division - Not Applicable

Copyright © All product information within this document is subject to ABB Motors and Mechanical Inc. copyright © protection, unless otherwise noted.

10/31/2023 9:29:49 PM

## Specifications

Enclosure	TEFC
Frame	145T
Frame Material	Steel
Frequency	50.00 Hz
Motor Letter Type	Three Phase
Output @ Frequency	2.000 HP @ 50 HZ
Phase	3
Synchronous Speed @ Frequency	1500 RPM @ 50 HZ
Voltage @ Frequency	400.0 V @ 50 HZ 230.0 V @ 50 HZ
XP Class and Group	None
XP Division	Not Applicable
Agency Approvals	C UR US CE CURUS IE3 UKCA WEEE
Ambient Temperature	40 °C
Auxillary Box	No Auxillary Box
Auxillary Box Lead Termination	None
Base Indicator	Rigid
Bearing Grease Type	Polyrex EM (-20F +300F)
Blower	None
Current @ Voltage	5.300 A @ 230.0 V 3.100 A @ 400.0 V
Design Code	B
Drip Cover	No Drip Cover
Duty Rating	CONT
Efficiency @ 100% Load	85.5 %
Electrically Isolated Bearing	Not Electrically Isolated
Feedback Device	NO FEEDBACK

## Part detail

Revision	A
Type	AC
Mech. spec.	35AA001
Base	
Status	PRD/A
Elec. spec.	35WGG303
Layout	35LYAA001
Eff. date	07-06-2023
CD Diagram	CD0022
Poles	04
Leads	6#18
Proprietary	False
Created date	03-11-2022

Front Shaft Indicator	None
Heater Indicator	No Heater
High Voltage Full Load Amps	3.1 a
Insulation Class	F
Inverter Code	Not Inverter
KVA Code	J
Lifting Lugs	No Lifting Lugs
Locked Bearing Indicator	No Locked Bearing
Motor Lead Quantity/Wire Size	6 @ 18 AWG
Motor Lead Termination	Flying Leads
Motor Standards	NEMA
Motor Type	3528M
Mounting Arrangement	F1
Number of Poles	4
Overall Length	13.31 IN
Power Factor	81
Product Family	General Purpose
Pulley End Bearing Type	Ball
Pulley Face Code	Standard
Pulley Shaft Indicator	Standard
Rodent Screen	None
Service Factor	1.15
Shaft Diameter	0.875 IN
Shaft Ground Indicator	No Shaft Grounding
Shaft Rotation	Reversible
Shaft Slinger Indicator	No Slinger
Speed	1460 rpm
Speed Code	Single Speed
Starting Method	Direct on line
Thermal Device - Bearing	None
Thermal Device - Winding	None
Vibration Sensor Indicator	No Vibration Sensor
Winding Thermal 1	None
Winding Thermal 2	None

**Nameplate**

<b>NP2716L</b>									
<b>CAT NO</b>	EM3558T-57								
<b>SPEC.</b>	35AA001G303G1								
<b>HP</b>	2/1.5KW				<b>PH</b>	3			
<b>VOLTS</b>	230/400								
<b>AMP</b>	5.3/3.1								
<b>R.P.M. (1/MIN)</b>	1460								
<b>FRAME</b>	145T		<b>HZ</b>	50		<b>I.P.</b>	44		
<b>SER.F.</b>	1.15	<b>CODE</b>	J	<b>DES</b>	B	<b>CL</b>	F		
<b>NOM.EFF.</b>	85.5		<b>% (100%)</b>						
<b>PF</b>	81								
<b>RATING</b>	40C AMB-CONT				<b>CC</b>				
<b>DE BRG</b>	6205		<b>ODE</b>	6203					
<b>ENCL</b>	TEFC	<b>SN</b>							
<b>BLANK</b>	SFA 6.1/3.5								
	20KG IC411								

**AC Induction Motor Performance Data**

Record # 86989

Typical performance - not guaranteed values

Winding: 35WGG303-R001		Type: 3528M	Enclosure: TEFC	
<b>Nameplate Data</b>			<b>400 V, 50 Hz: High Voltage Connection</b>	
Rated Output (HP)	2	Full Load Torque	7.1 LB-FT	
Volts	230/400	Start Configuration	direct on line	
Full Load Amps	5.3/3.1	Breakdown Torque	21.59 LB-FT	
R.P.M.	1460	Pull-up Torque	17.05 LB-FT	
Hz	50 Phase	3	Locked-rotor Torque	19.18 LB-FT
NEMA Design Code	B KVA Code	J	Starting Current	22.6 A
Service Factor (S.F.)	1.15	No-load Current	1.54 A	
NEMA Nom. Eff.	85.5 Power Factor	81	Line-line Res. @ 25°C	9.9 Ω
Rating - Duty	40C AMB-CONT	Temp. Rise @ Rated Load	69°C	
S.F. Amps	6.1/3.5	Temp. Rise @ S.F. Load	86°C	
		Locked-rotor Power Factor	62.7	
		Rotor inertia	0.202 lb-ft <sup>2</sup>	

**Load Characteristics 400 V, 50 Hz, 2 HP**

% of Rated Load	25	50	75	100	125	150	S.F.
Power Factor	40	61	75	81	85	87	83
Efficiency	80.8	86.6	87.1	85.7	84	81.5	84.7
Speed	1492	1482	1471	1459	1445	1431	1451
Line amperes	1.66	1.98	2.48	3.06	3.76	4.52	3.48

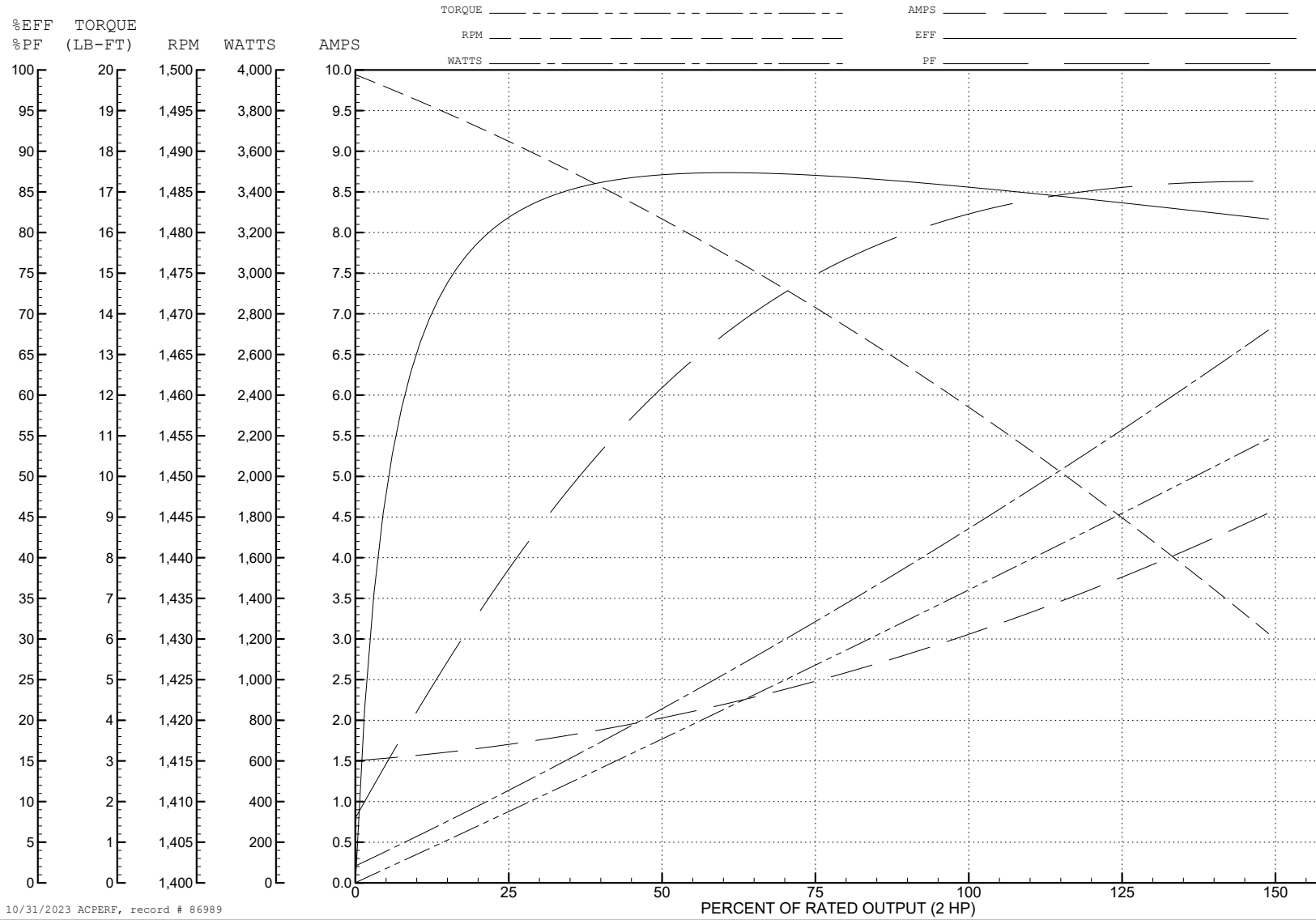
ABB Motors and Mechanical Inc.

WINDING # 35WGG303

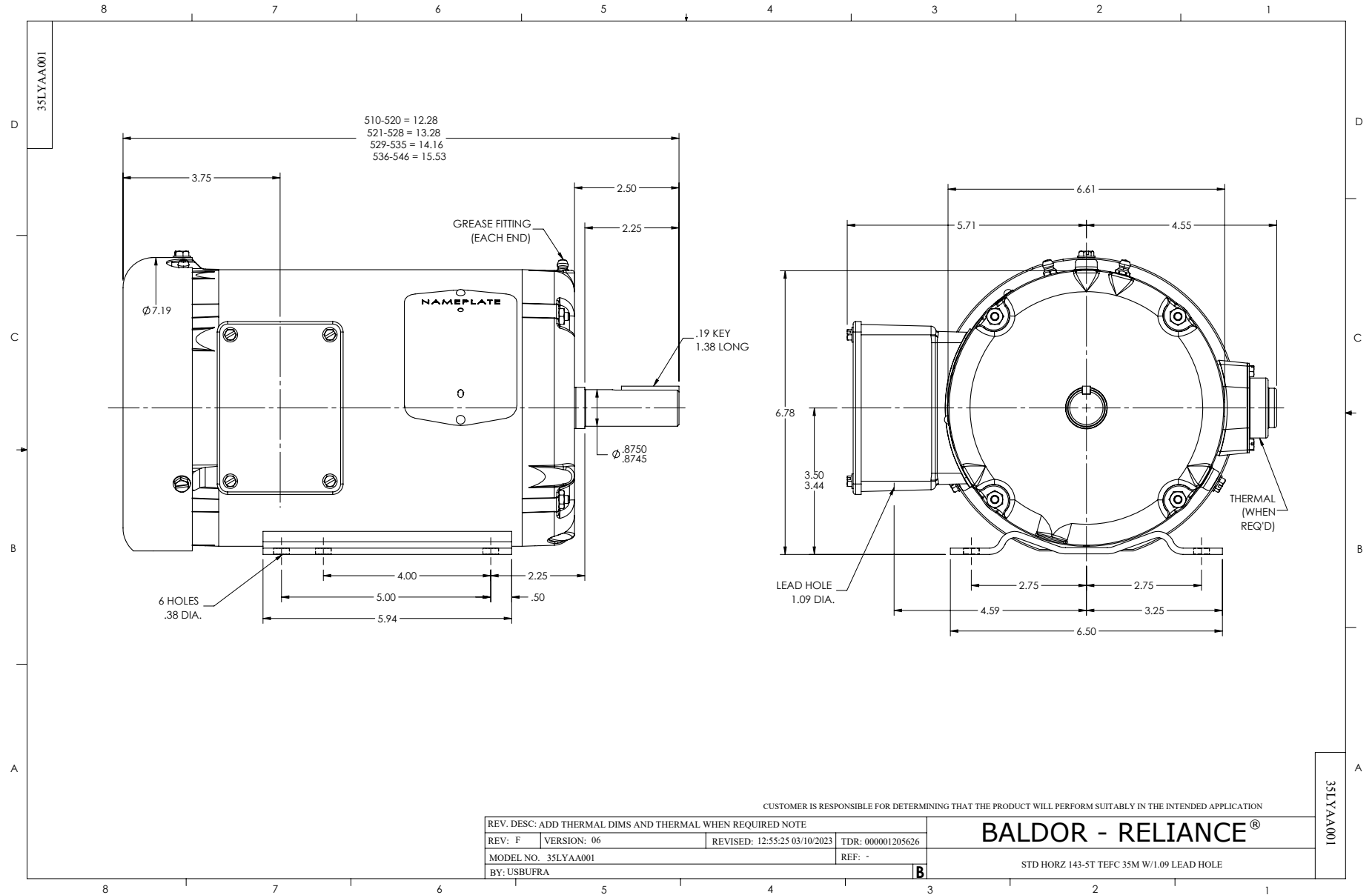
Typical performance - not guaranteed values.

2 HP 3 PH 50 HZ 1460 RPM 400 V 3528M

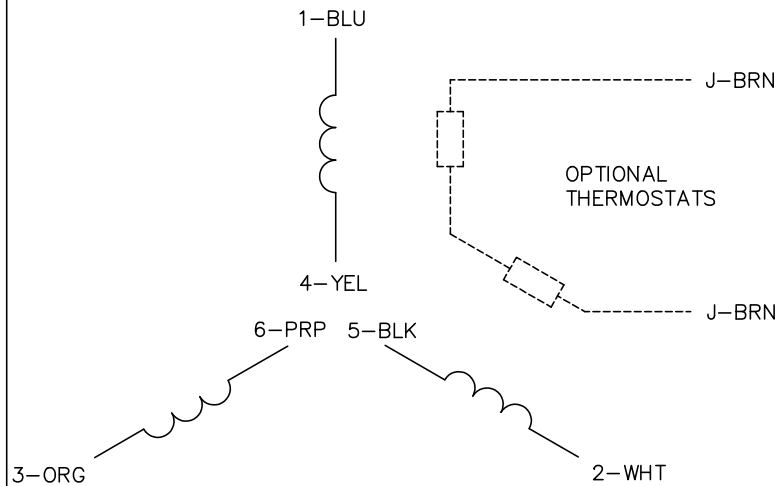
TORQUES (LB-FT): PO=21.59 PU=17.05 LR=19.18 LRA=22.6



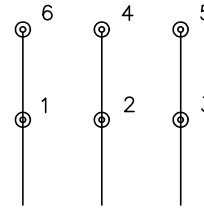
10/31/2023 ACPERF, record # 86989



CD0022

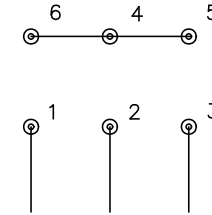


LOW VOLTAGE  
(1D)



LINE

HIGH VOLTAGE  
(1Y)



LINE

NOTES:

1. INTERCHANGE ANY TWO LINE LEADS TO REVERSE ROTATION.
2. OPTIONAL THERMOSTATS ARE PROVIDED WHEN SPECIFIED.
3. ACTUAL NUMBER OF INTERNAL PARALLEL CIRCUITS MAY BE A MULTIPLE OF THOSE SHOWN ABOVE.
4. LEAD COLORS ARE OPTIONAL. LEADS MUST ALWAYS BE NUMBERED AS SHOWN.

REV. DESC: REVISE TO SHOW OPTIONAL COLORS			
REV. LTR: F	BY: JLP	REVISED: 01/21/99 3:54	TDR: 0171435
CD0022		FILE: AAA00005144	MDL: -
		MTL: -	

**BALDOR ELECTRIC Co.**

3PH, DV, 6 LEADS, DELTA/WYE CONNECTION

CD0022