



Customer information packet

EM3555T-57

2HP, 2900RPM, 3PH, 50HZ, 145T, 3532M, TEFC, F1

Class - None

Division - Not Applicable

Specifications

| | |
|--------------------------------|---|
| Enclosure | TEFC |
| Frame | 143T |
| Frame Material | Steel |
| Frequency | 50.00 Hz |
| Motor Letter Type | Three Phase |
| Output @ Frequency | 2.000 HP @ 50 HZ |
| Phase | 3 |
| Synchronous Speed @ Frequency | 3000 RPM @ 50 HZ |
| Voltage @ Frequency | 230.0 V @ 50 HZ 400.0 V @ 50 HZ |
| XP Class and Group | None |
| XP Division | Not Applicable |
| Agency Approvals | C UR US CE CURUS IE3 UKCA WEEE |
| Ambient Temperature | 40 °C |
| Auxillary Box | No Auxillary Box |
| Auxillary Box Lead Termination | None |
| Base Indicator | Rigid |
| Bearing Grease Type | Polyrex EM (-20F +300F) |
| Blower | None |
| Current @ Voltage | 2.900 A @ 400.0 V 5.000 A @ 230.0 V |
| Design Code | B |
| Drip Cover | No Drip Cover |
| Duty Rating | CONT |
| Efficiency @ 100% Load | 84.2 % |
| Electrically Isolated Bearing | Not Electrically Isolated |
| Feedback Device | NO FEEDBACK |

Part detail

| | |
|--------------|------------|
| Revision | K |
| Type | AC |
| Mech. spec. | 35TT638 |
| Base | |
| Status | PRD/A |
| Elec. spec. | 35WGQ064 |
| Layout | 35LYTT638 |
| Eff. date | 07-06-2023 |
| CD Diagram | CD0022 |
| Poles | 02 |
| Leads | 6#18 |
| Proprietary | False |
| Created date | 12-22-2015 |

| | |
|-------------------------------|--------------------|
| Front Face Code | Standard |
| Front Shaft Indicator | None |
| Heater Indicator | No Heater |
| High Voltage Full Load Amps | 2.9 a |
| Insulation Class | B |
| Inverter Code | Not Inverter |
| KVA Code | M |
| Lifting Lugs | No Lifting Lugs |
| Locked Bearing Indicator | No Locked Bearing |
| Motor Lead Exit | Ko Box |
| Motor Lead Quantity/Wire Size | 6 @ 18 AWG |
| Motor Lead Termination | Flying Leads |
| Motor Standards | NEMA |
| Motor Type | 3532M |
| Mounting Arrangement | F1 |
| Number of Poles | 2 |
| Overall Length | 14.17 IN |
| Power Factor | 88 |
| Product Family | General Purpose |
| Pulley End Bearing Type | Ball |
| Pulley Face Code | Standard |
| Pulley Shaft Indicator | Standard |
| Rodent Screen | None |
| RoHS Status | ROHS COMPLIANT |
| Service Factor | 1.00 |
| Shaft Diameter | 0.875 IN |
| Shaft Extension Location | Pulley End |
| Shaft Ground Indicator | No Shaft Grounding |
| Shaft Rotation | Reversible |
| Shaft Slinger Indicator | No Slinger |
| Speed | 2900 rpm |
| Speed Code | Single Speed |
| Starting Method | Direct on line |
| Thermal Device - Bearing | None |

| | |
|-----------------------------------|---------------------|
| Thermal Device - Winding | None |
| Vibration Sensor Indicator | No Vibration Sensor |
| Winding Thermal 1 | None |
| Winding Thermal 2 | None |

Nameplate

| NP2716L | | | | | | | | | |
|-----------------------|------------------------|-------------|-----------------|------------|-----------|-------------|----|--|--|
| CAT NO | EM3555T-57 | | | | | | | | |
| SPEC. | 35TT638Q064G1 | | | | | | | | |
| HP | 2/1.5KW | | | | PH | 3 | | | |
| VOLTS | 230/400 | | | | | | | | |
| AMP | 5/2.9 | | | | | | | | |
| R.P.M. (1/MIN) | 2900 | | | | | | | | |
| FRAME | 143T | | HZ | 50 | | I.P. | 44 | | |
| SER.F. | 1.00 | CODE | M | DES | B | CL | B | | |
| NOM.EFF. | 84.2 | | % (100%) | | | | | | |
| PF | 88 | | | | | | | | |
| RATING | 40C AMB-CONT | | | | CC | | | | |
| DE BRG | 6205 | | ODE | 6203 | | | | | |
| ENCL | TEFC | SN | | | | | | | |
| BLANK | IE3-83.5(75%)79.8(50%) | | | | | | | | |
| | 23KG IC411 | | | | | | | | |

AC Induction Motor Performance Data

Record # 54635

Typical performance - not guaranteed values

| Winding: 35WGQ064-R005 | | Type: 3532M | | Enclosure: TEFC | |
|-------------------------------|--------------------------|----------------------------|--|---------------------------|--|
| Nameplate Data | | | 400 V, 50 Hz: High Voltage Connection | | |
| Rated Output (HP) | 2 | Full Load Torque | 3.55 LB-FT | | |
| Volts | 230/400 | Start Configuration | direct on line | | |
| Full Load Amps | 5/2.9 | Breakdown Torque | 17.8 LB-FT | | |
| R.P.M. | 2900 | Pull-up Torque | 11.5 LB-FT | | |
| Hz | 50 Phase | 3 | Locked-rotor Torque | 16.4 LB-FT | |
| NEMA Design Code | B KVA Code | M | Starting Current | 30.7 A | |
| Service Factor (S.F.) | | 1 | No-load Current | 1.4 A | |
| NEMA Nom. Eff. | 84.2 Power Factor | 88 | Line-line Res. @ 25°C | 4.8 Ω | |
| Rating - Duty | 40C AMB-CONT | | Temp. Rise @ Rated Load | 44°C | |
| | | | Locked-rotor Power Factor | 58.4 | |
| | | | Rotor inertia | 0.0876 LB-FT ² | |

Load Characteristics 400 V, 50 Hz, 2 HP

| % of Rated Load | 25 | 50 | 75 | 100 | 125 | 150 |
|------------------------|-----------|-----------|-----------|------------|------------|------------|
| Power Factor | 50 | 71 | 83 | 88 | 90 | 92 |
| Efficiency | 70.4 | 80.6 | 83.9 | 84.9 | 84.8 | 84 |
| Speed | 2976 | 2954 | 2931 | 2908 | 2881 | 2855 |
| Line amperes | 1.53 | 1.87 | 2.3 | 2.84 | 3.42 | 4.05 |

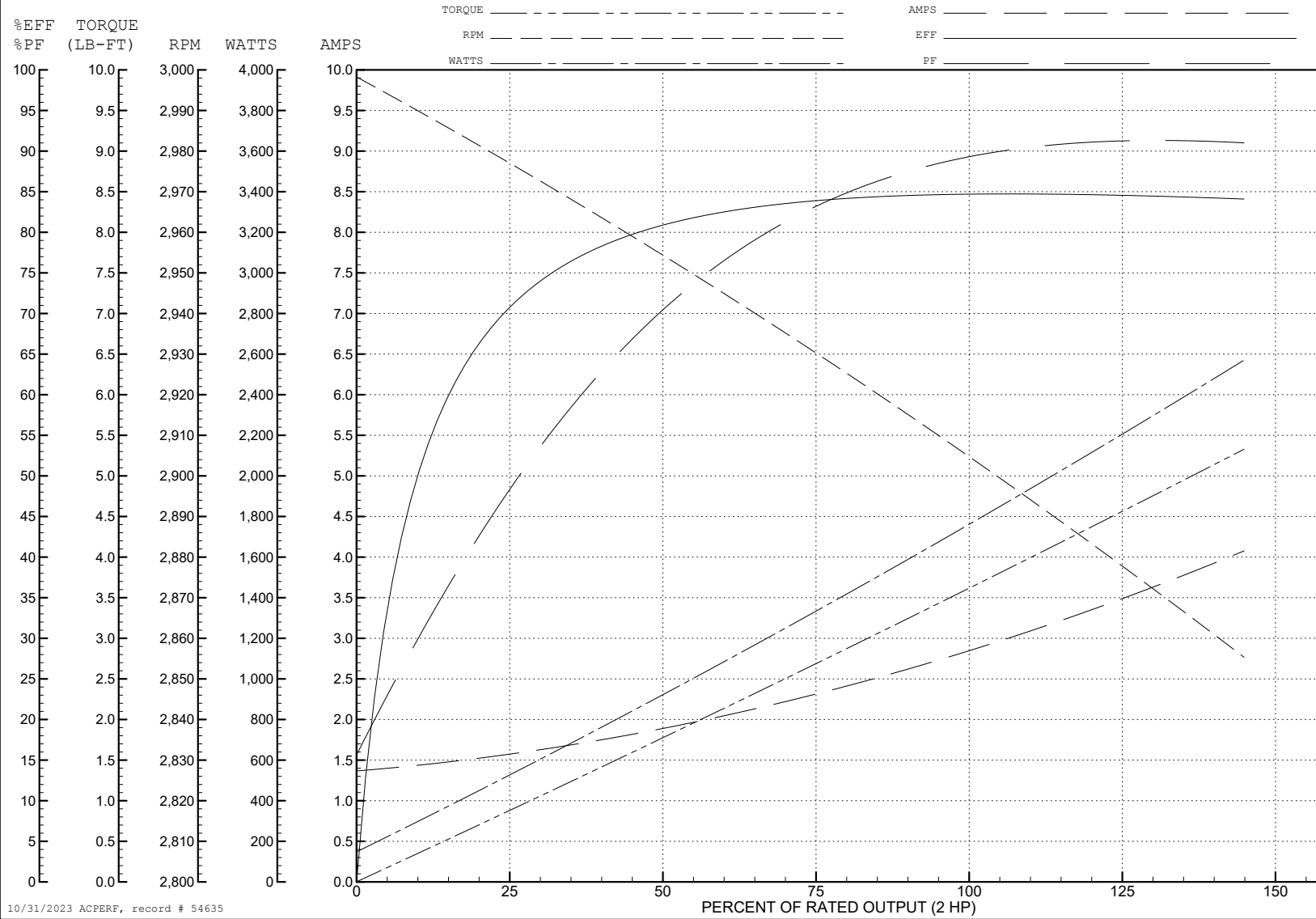
ABB Motors and Mechanical Inc.

WINDING # 35WGQ064

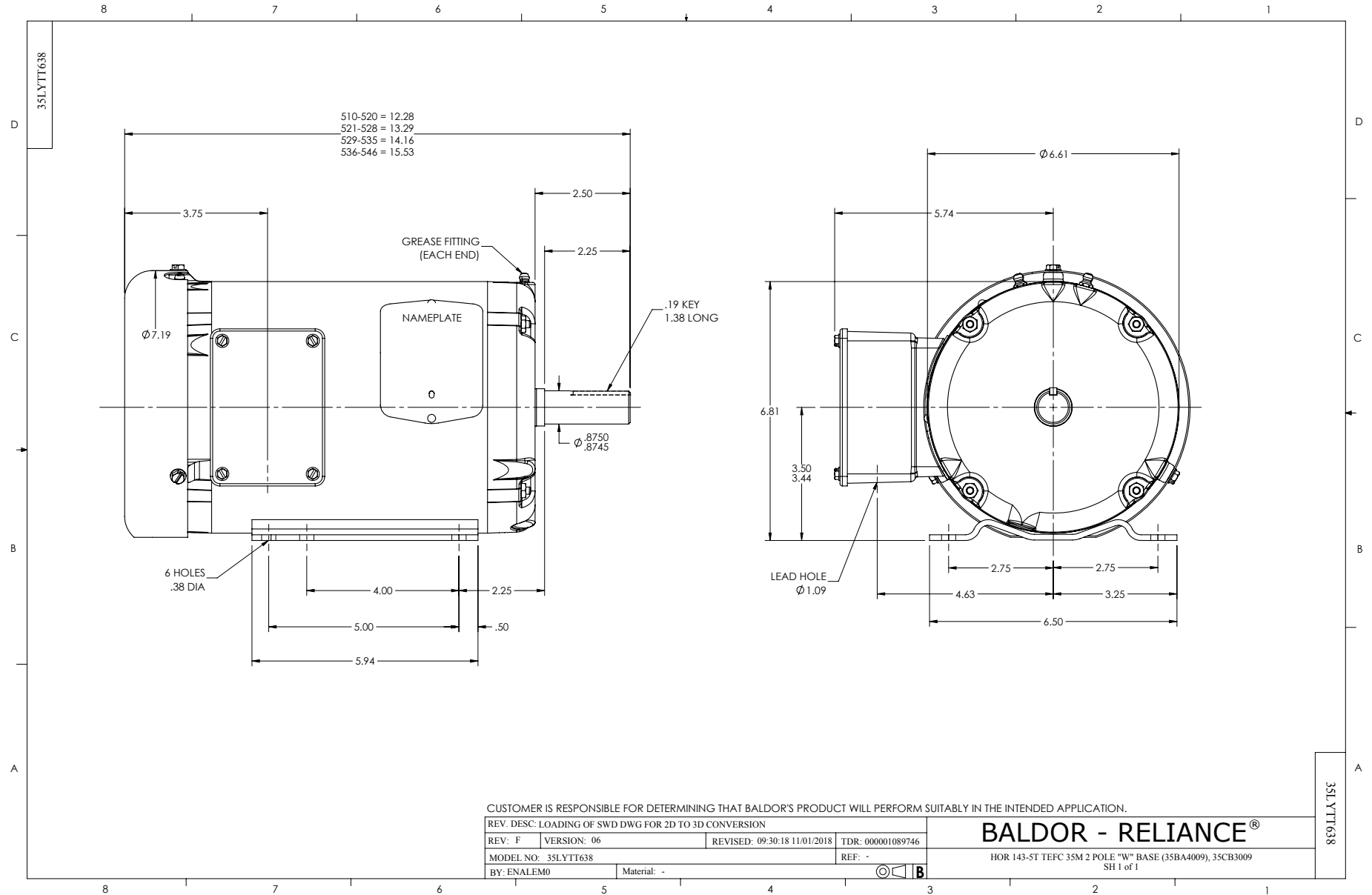
Typical performance - not guaranteed values.

2 HP 3 PH 50 HZ 2900 RPM 400 V 3532M

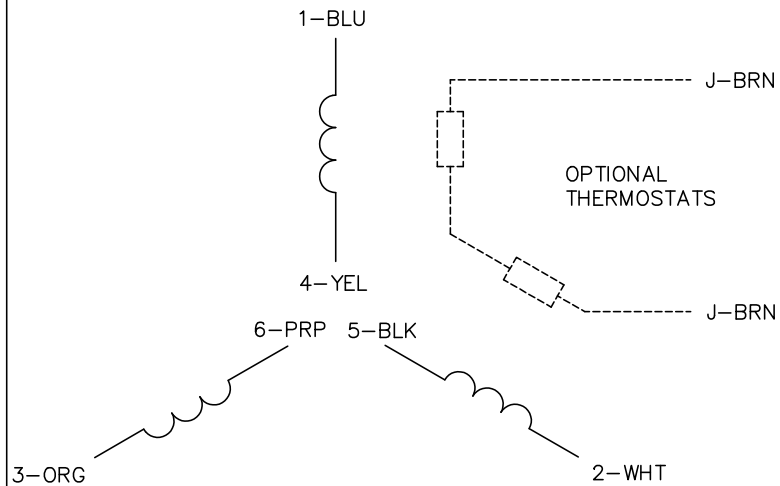
TORQUES (LB-FT): PO=17.8 PU=11.5 LR=16.4 LRA=30.7



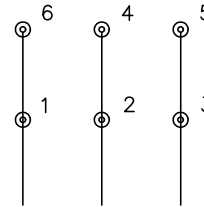
10/31/2023 ACPERF, record # 54635



CD0022

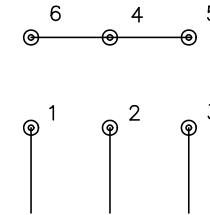


LOW VOLTAGE
(1D)



LINE

HIGH VOLTAGE
(1Y)



LINE

NOTES:

1. INTERCHANGE ANY TWO LINE LEADS TO REVERSE ROTATION.
2. OPTIONAL THERMOSTATS ARE PROVIDED WHEN SPECIFIED.
3. ACTUAL NUMBER OF INTERNAL PARALLEL CIRCUITS MAY BE A MULTIPLE OF THOSE SHOWN ABOVE.
4. LEAD COLORS ARE OPTIONAL. LEADS MUST ALWAYS BE NUMBERED AS SHOWN.

| | | | |
|---|---------|------------------------|--------------|
| REV. DESC: REVISE TO SHOW OPTIONAL COLORS | | | |
| REV. LTR: F | BY: JLP | REVISED: 01/21/99 3:54 | TDR: 0171435 |
| CD0022 | | FILE: AAA00005144 | MDL: - |
| | | MTL: - | |

BALDOR ELECTRIC Co.

3PH, DV, 6 LEADS, DELTA/WYE CONNECTION

CD0022