



---

# Customer information packet

## EM3555T-5

2HP, 3490RPM, 3PH, 60HZ, 145T, 3526M, TEFC, F1

Class - None

Division - Not Applicable

## Specifications

|                                |   |
|--------------------------------|---|
| Enclosure                      | TEFC  |
| Frame                          | 143T  |
| Frame Material                 | Steel   |
| Frequency                      | 60.00 Hz                                      |
| Motor Letter Type              | Three Phase                                   |
| Output @ Frequency             | 2.000 HP @ 60 HZ                              |
| Phase                          | 3   |
| Synchronous Speed @ Frequency  | 3600 RPM @ 60 HZ                              |
| Voltage @ Frequency            | 575.0 V @ 60 HZ                               |
| XP Class and Group             | None  |
| XP Division                    | Not Applicable                                |
| Agency Approvals               | NEMA_PREMIUM<br>CSA EEV<br>NEMA PREMIUM<br>UR |
| Ambient Temperature            | 40 °C   |
| Auxillary Box                  | No Auxillary Box                              |
| Auxillary Box Lead Termination | None  |
| Base Indicator                 | Rigid   |
| Bearing Grease Type            | Polyrex EM (-20F +300F)                       |
| Blower                         | None  |
| Current @ Voltage              | 2.000 A @ 575.0 V                             |
| Design Code                    | B   |
| Drip Cover                     | No Drip Cover                                 |
| Duty Rating                    | CONT  |
| Efficiency @ 100% Load         | 85.5 %  |
| Electrically Isolated Bearing  | Not Electrically Isolated                     |
| Feedback Device                | NO FEEDBACK                                   |
| Front Face Code                | Standard                                      |
| Front Shaft Indicator          | None  |
| Heater Indicator               | No Heater                                     |
| High Voltage Full Load Amps    | 2.0 a   |

## Part detail

|              |            |
|--------------|------------|
| Revision     | P          |
| Type         | AC         |
| Mech. spec.  | 35TT638    |
| Base         |            |
| Status       | PRD/A      |
| Elec. spec.  | 35WGM831   |
| Layout       | 35LYTT638  |
| Eff. date    | 11-08-2018 |
| CD Diagram   | CD0006     |
| Poles        | 02         |
| Leads        | 3#18       |
| Proprietary  | False      |
| Created date | 05-16-2012 |

|                                      |                     |
|--------------------------------------|---------------------|
| <b>Insulation Class</b>              | F                   |
| <b>Inverter Code</b>                 | Inverter Ready      |
| <b>IP Rating</b>                     | NONE                |
| <b>KVA Code</b>                      | M                   |
| <b>Lifting Lugs</b>                  | No Lifting Lugs     |
| <b>Locked Bearing Indicator</b>      | No Locked Bearing   |
| <b>Motor Lead Exit</b>               | Ko Box              |
| <b>Motor Lead Quantity/Wire Size</b> | 3 @ 18 AWG          |
| <b>Motor Lead Termination</b>        | Flying Leads        |
| <b>Motor Standards</b>               | NEMA                |
| <b>Motor Type</b>                    | 3526M               |
| <b>Mounting Arrangement</b>          | F1                  |
| <b>Number of Poles</b>               | 2                   |
| <b>Overall Length</b>                | 13.29 IN            |
| <b>Power Factor</b>                  | 88                  |
| <b>Product Family</b>                | General Purpose     |
| <b>Pulley End Bearing Type</b>       | Ball                |
| <b>Pulley Face Code</b>              | Standard            |
| <b>Pulley Shaft Indicator</b>        | Standard            |
| <b>Rodent Screen</b>                 | None                |
| <b>RoHS Status</b>                   | ROHS COMPLIANT      |
| <b>Service Factor</b>                | 1.15                |
| <b>Shaft Diameter</b>                | 0.875 IN            |
| <b>Shaft Extension Location</b>      | Pulley End          |
| <b>Shaft Ground Indicator</b>        | No Shaft Grounding  |
| <b>Shaft Rotation</b>                | Reversible          |
| <b>Shaft Slinger Indicator</b>       | No Slinger          |
| <b>Speed</b>                         | 3490 rpm            |
| <b>Speed Code</b>                    | Single Speed        |
| <b>Starting Method</b>               | Direct on line      |
| <b>Thermal Device - Bearing</b>      | None                |
| <b>Thermal Device - Winding</b>      | None                |
| <b>Vibration Sensor Indicator</b>    | No Vibration Sensor |
| <b>Winding Thermal 1</b>             | None                |

**Winding Thermal 2**

**None**

---

**Nameplate****NP3441L**

|                     |               |             |                       |            |   |           |   |
|---------------------|---------------|-------------|-----------------------|------------|---|-----------|---|
| <b>CAT.NO.</b>      |               |             |                       |            |   |           |   |
| <b>SPEC.</b>        | 35TT638M831G1 |             |                       |            |   |           |   |
| <b>HP</b>           | 2             |             |                       |            |   |           |   |
| <b>VOLTS</b>        | 575           |             |                       |            |   |           |   |
| <b>AMP</b>          | 2             |             |                       |            |   |           |   |
| <b>RPM</b>          | 3490          |             |                       |            |   |           |   |
| <b>FRAME</b>        | 143T          |             | <b>HZ</b>             | 60         |   | <b>PH</b> | 3 |
| <b>SER.F.</b>       | 1.15          | <b>CODE</b> | M                     | <b>DES</b> | B | <b>CL</b> | F |
| <b>NEMA-NOM-EFF</b> | 85.5          | <b>PF</b>   | 88                    |            |   |           |   |
| <b>RATING</b>       | 40C AMB-CONT  |             |                       |            |   |           |   |
| <b>CC</b>           | 010A          |             | <b>USABLE AT 208V</b> |            |   | N/A       |   |
| <b>DE</b>           | 6205          |             | <b>ODE</b>            | 6203       |   |           |   |
| <b>ENCL</b>         | TEFC          | <b>SN</b>   |                       |            |   |           |   |

**VPWM INVERTER READY****CT6-60H(10:1)VT3-60H(20:1)**

**AC Induction Motor Performance Data**

Record # 44974

Typical performance - not guaranteed values

| Winding: 35WGM831-R002 |                   | Type: 3526M                                   | Enclosure: TEFC           |
|------------------------|-------------------|---|---------------------------|
| <b>Nameplate Data</b>  |                   | <b>575 V, 60 Hz:<br/>Single Voltage Motor</b> |                           |
| Rated Output (HP)      | 2                 | Full Load Torque                              | 2.98 LB-FT                |
| Volts                  | 575               | Start Configuration                           | direct on line            |
| Full Load Amps         | 2                 | Breakdown Torque                              | 14.4 LB-FT                |
| R.P.M.                 | 3490              | Pull-up Torque                                | 6.42 LB-FT                |
| Hz                     | 60 Phase          | Locked-rotor Torque                           | 11.4 LB-FT                |
| NEMA Design Code       | B KVA Code        | Starting Current                              | 21 A                      |
| Service Factor (S.F.)  | 1.15              | No-load Current                               | 0.745 A                   |
| NEMA Nom. Eff.         | 85.5 Power Factor | Line-line Res. @ 25°C                         | 10.7 Ω                    |
| Rating - Duty          | 40C AMB-CONT      | Temp. Rise @ Rated Load                       | 44°C                      |
| S.F. Amps              |                   | Temp. Rise @ S.F. Load                        | 52°C                      |
|                        |                   | Locked-rotor Power Factor                     | 50                        |
|                        |                   | Rotor inertia                                 | 0.0719 LB-FT <sup>2</sup> |

**Load Characteristics 575 V, 60 Hz, 2 HP**

| % of Rated Load | 25    | 50   | 75   | 100  | 125  | 150  | S.F. |
|-----------------|-------|------|------|------|------|------|------|
| Power Factor    | 54    | 74   | 84   | 88   | 90   | 91   | 89   |
| Efficiency      | 73.2  | 83.6 | 85.5 | 86.3 | 85.7 | 84.7 | 85.9 |
| Speed           | 3572  | 3547 | 3521 | 3493 | 3463 | 3428 | 3475 |
| Line amperes    | 0.895 | 1.19 | 1.55 | 1.96 | 2.4  | 2.89 | 2.22 |

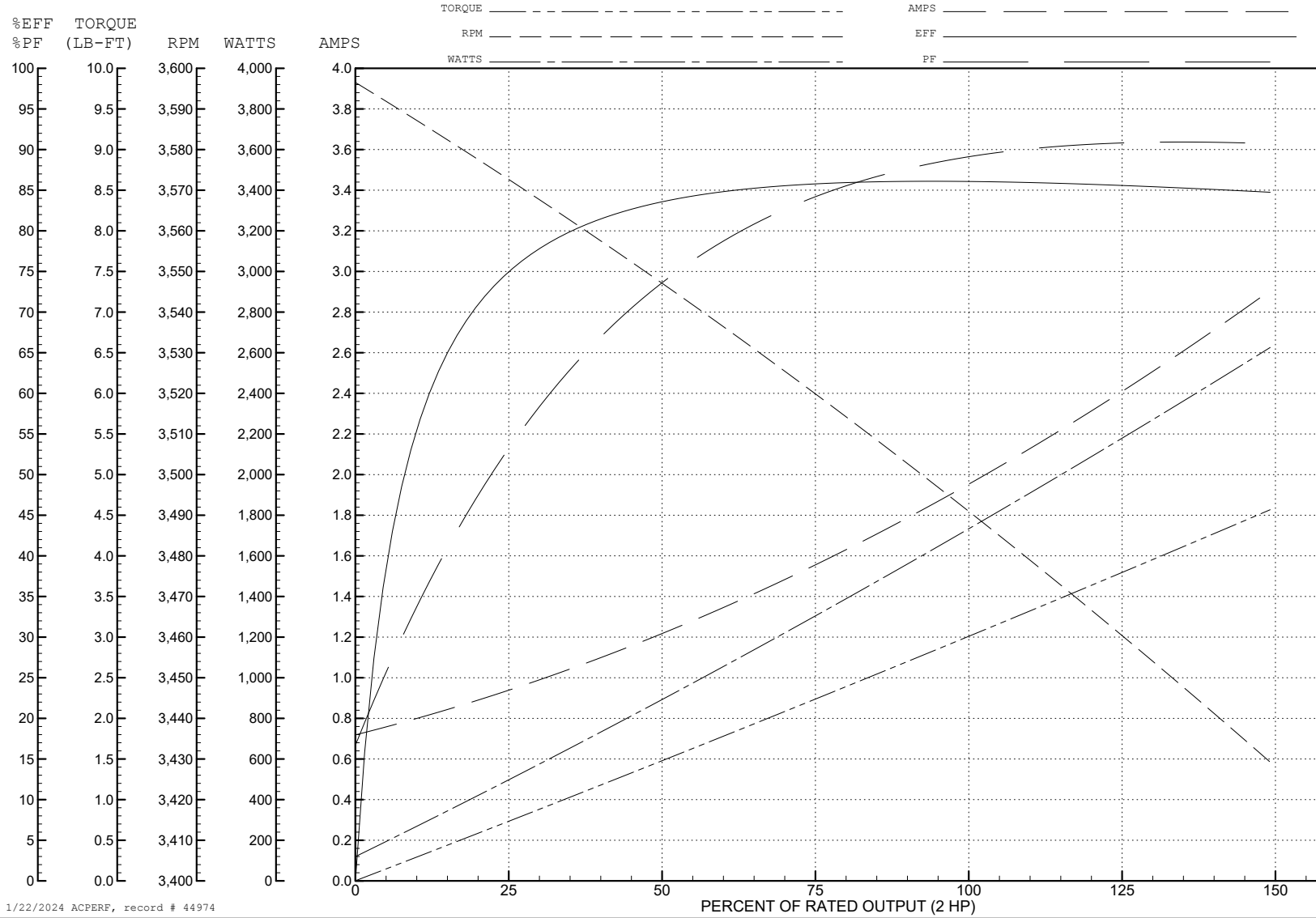
ABB Motors and Mechanical Inc.

WINDING # 35WGM831

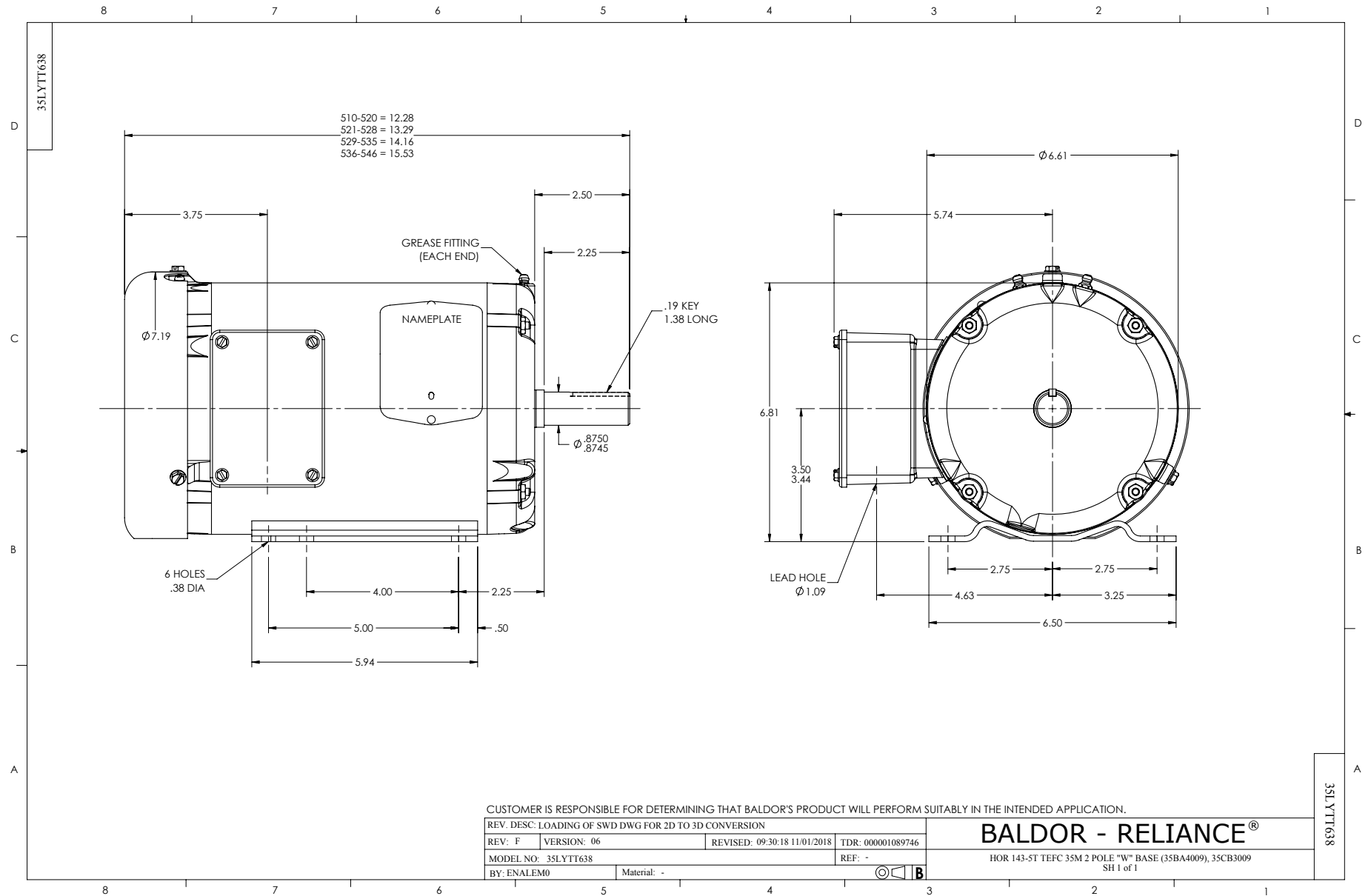
Typical performance - not guaranteed values.

2 HP 3 PH 60 HZ 3490 RPM 575 V 3526M

TORQUES (LB-FT): PO=14.4 PU=6.42 LR=11.4 LRA=21

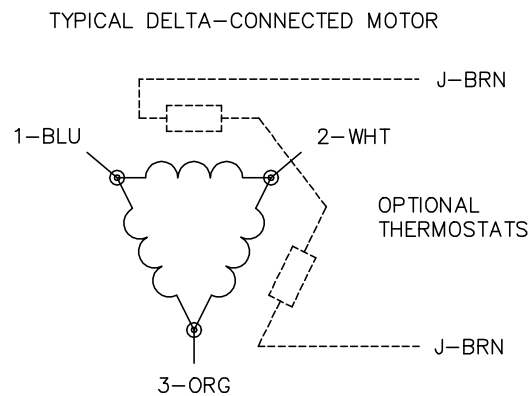
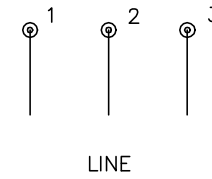
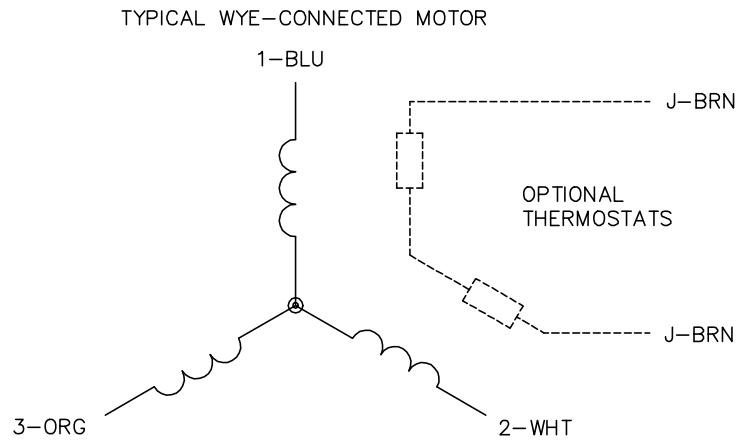


1/22/2024 ACPERF, record # 44974





CD0006



NOTES:

1. THREE LEAD MOTOR MAY BE EITHER WYE CONNECTED OR DELTA CONNECTED.
2. INTERCHANGE ANY TWO LINE LEADS TO REVERSE ROTATION.
3. OPTIONAL THERMOSTATS ARE PROVIDED WHEN SPECIFIED.
4. ACTUAL NUMBER OF INTERNAL PARALLEL CIRCUITS MAY VARY.
5. LEAD COLORS ARE OPTIONAL. LEADS MUST BE NUMBERED AS SHOWN.

CD0006

|                                   |                              |                   |
|-----------------------------------|------------------------------|-------------------|
| REV. DESC: ADD CLASS CONN00000007 |                              |                   |
| REV. LTR: E                       | VERSION: 01                  | TDR: 000001099922 |
| FILE: \AAA\00005\141              | REVISED: 10:24:49 02/19/2019 | BY: ENBRIRO       |
| MTL: -                            | © □                          |                   |

**BALDOR - RELIANCE®**

3PH, SV, 3 LEADS, WYE OR DELTA CONNECTED

SH 1 of 1