



Customer information packet

EM3554T-57

1.5/1.1KWHP, 1470RPM, 3PH, 50HZ, 145T, 3524M

Class - None

Division - Not Applicable

Specifications

Enclosure	TEFC
Frame	145T
Frame Material	Steel
Frequency	50.00 Hz
Motor Letter Type	Three Phase
Output @ Frequency	1.500 HP @ 50 HZ
Phase	3
Synchronous Speed @ Frequency	1500 RPM @ 50 HZ
Voltage @ Frequency	230.0 V @ 50 HZ 400.0 V @ 50 HZ
XP Class and Group	None
XP Division	Not Applicable
Agency Approvals	CE CSA IE3 UR WEEE
Ambient Temperature	40 °C
Auxillary Box	No Auxillary Box
Auxillary Box Lead Termination	None
Base Indicator	Rigid
Bearing Grease Type	Polyrex EM (-20F +300F)
Blower	None
Current @ Voltage	4.500 A @ 230.0 V 2.600 A @ 400.0 V
Design Code	B
Drip Cover	No Drip Cover
Duty Rating	CONT
Efficiency @ 100% Load	84.2 %
Electrically Isolated Bearing	Not Electrically Isolated
Feedback Device	NO FEEDBACK
Front Shaft Indicator	None

Part detail

Revision	A
Type	AC
Mech. spec.	35AA001
Base	
Status	PRD/A
Elec. spec.	35WGG296
Layout	35LYAA001
Eff. date	07-06-2023
CD Diagram	CD0022
Poles	04
Leads	6#18 Y
Proprietary	False
Created date	03-11-2022

Heater Indicator	No Heater
High Voltage Full Load Amps	2.6 a
Insulation Class	F
Inverter Code	Inverter Ready
IP Rating	NONE
KVA Code	L
Lifting Lugs	No Lifting Lugs
Locked Bearing Indicator	No Locked Bearing
Motor Lead Quantity/Wire Size	6 @ 18 AWG
Motor Lead Termination	Flying Leads
Motor Standards	NEMA
Motor Type	3524M
Mounting Arrangement	F1
Number of Poles	4
Overall Length	13.31 IN
Power Factor	73
Product Family	General Purpose
Pulley End Bearing Type	Ball
Pulley Face Code	Standard
Pulley Shaft Indicator	Standard
Rodent Screen	None
Service Factor	1.15
Shaft Diameter	0.875 IN
Shaft Ground Indicator	No Shaft Grounding
Shaft Rotation	Reversible
Shaft Slinger Indicator	No Slinger
Speed	1470 rpm
Speed Code	Single Speed
Starting Method	Direct on line
Thermal Device - Bearing	None
Thermal Device - Winding	None
Vibration Sensor Indicator	No Vibration Sensor
Winding Thermal 1	None
Winding Thermal 2	None

Nameplate**NP2716L**

CAT NO	EM3554T-57					
SPEC.	35AA001G296G1					
HP	1.5/1.1KW	PH	3			
VOLTS	230/400					
AMP	4.5/2.6					
R.P.M. (1/MIN)	1470					
FRAME	145T	HZ	50	I.P.	44	
SER.F.	1.15	CODE	L	DES	B	CL F
NOM.EFF.	84.2	% (100%)				
PF	73					
RATING	40C AMB-S1 CONT	CC				
DE BRG	6205	ODE	6203			
ENCL	TEFC	SN				
BLANK	SFA 4.8/2.8					
	IC411 19KG					

AC Induction Motor Performance Data

Record # 86992

Preliminary Data Sheet

Winding: 35WGG296-R001		Type: 3524M	Enclosure: TEFC		
Nameplate Data			400 V, 50 Hz: High Voltage Connection		
Rated Output (HP)	1.5	Full Load Torque	5.39 LB-FT		
Volts	230/400	Start Configuration	direct on line		
Full Load Amps	4.5/2.6	Breakdown Torque	18.9 LB-FT		
R.P.M.	1470	Pull-up Torque	10.8 LB-FT		
Hz	50 Phase	3	Locked-rotor Torque	13.3 LB-FT	
NEMA Design Code	B	KVA Code	L	Starting Current	20 A
Service Factor (S.F.)	1.15	No-load Current	1.69 A		
NEMA Nom. Eff.	84.2	Power Factor	73	Line-line Res. @ 25°C	12.6 Ω
Rating - Duty	40C	AMB-CONT	Temp. Rise @ Rated Load		56°C
S.F. Amps	5/2.9	Temp. Rise @ S.F. Load	67°C		
		Locked-rotor Power Factor	70		
		Rotor inertia	0.173 lb-ft ²		

Load Characteristics 400 V, 50 Hz, 1.5 HP

% of Rated Load	25	50	75	100	125	150	S.F.
Power Factor	33	51	64	73	79	83	80
Efficiency	72.7	81.7	84	84.3	83.2	81.7	84.2
Speed	1492	1486	1478	1470	1460	1450	1462
Line amperes	1.75	1.94	2.25	2.61	3.07	3.58	2.75

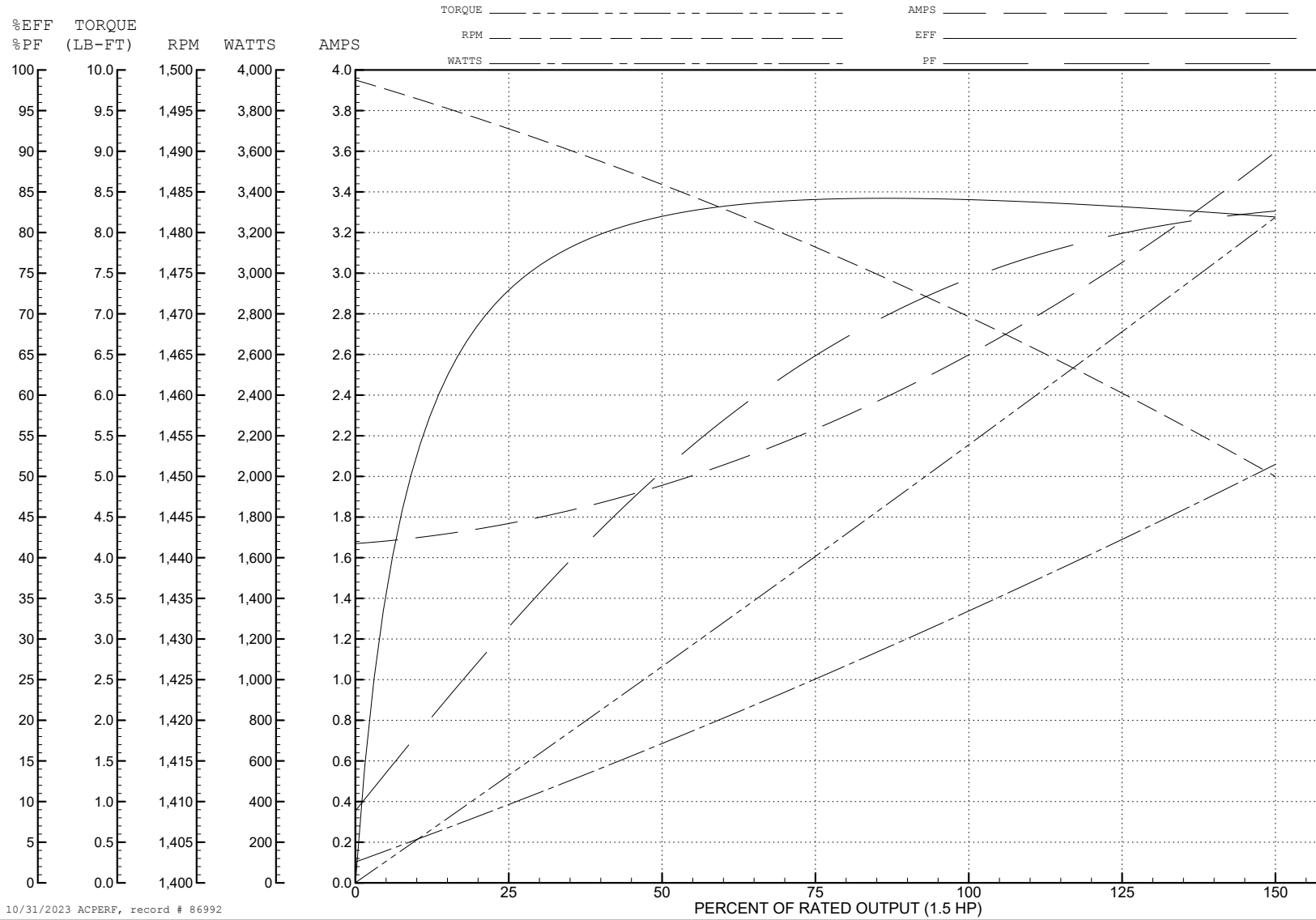
ABB Motors and Mechanical Inc.

WINDING # 35WGG296

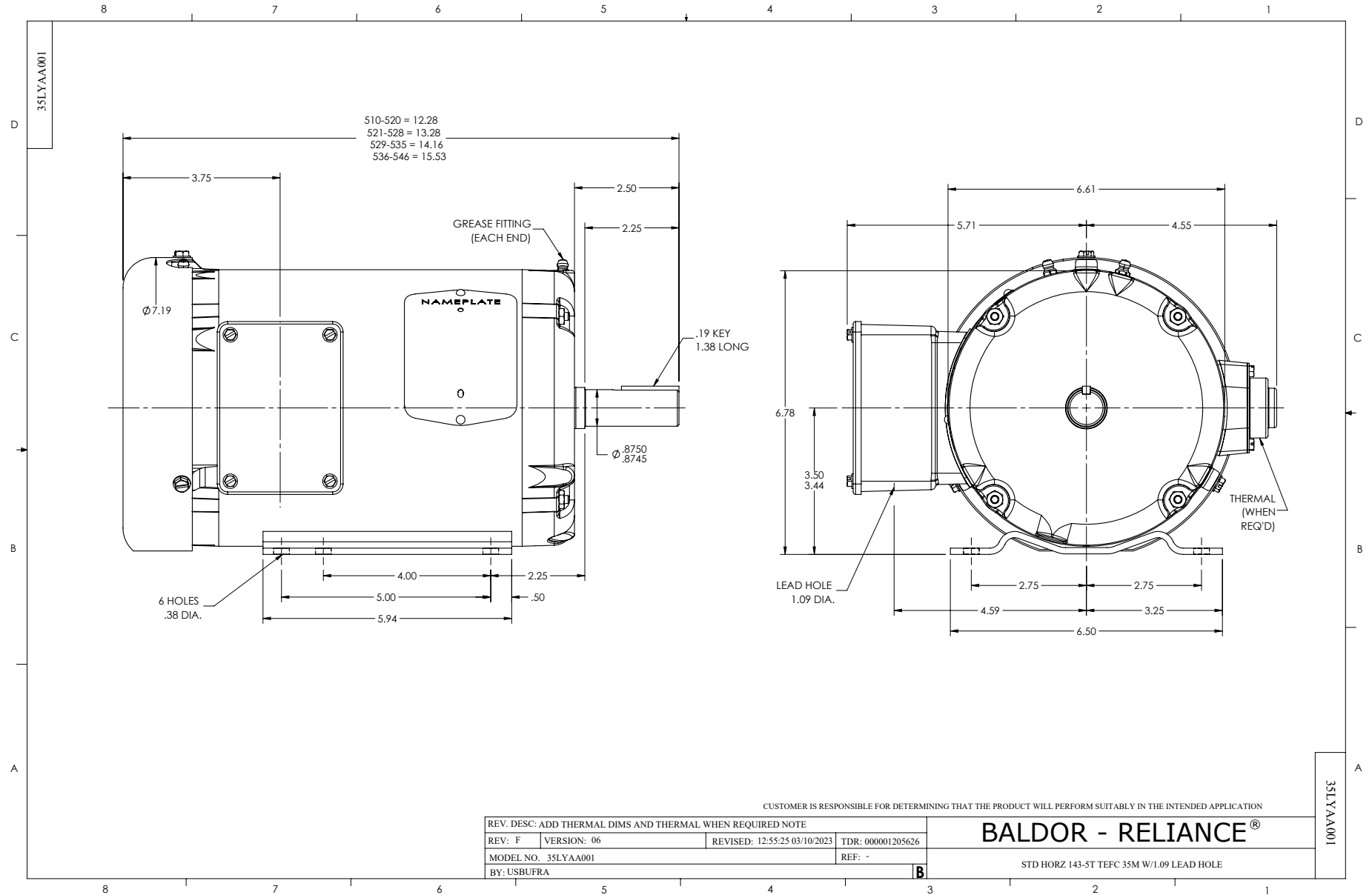
Typical performance - not guaranteed values.

1.5 HP 3 PH 50 HZ 1470 RPM 400 V 3524M

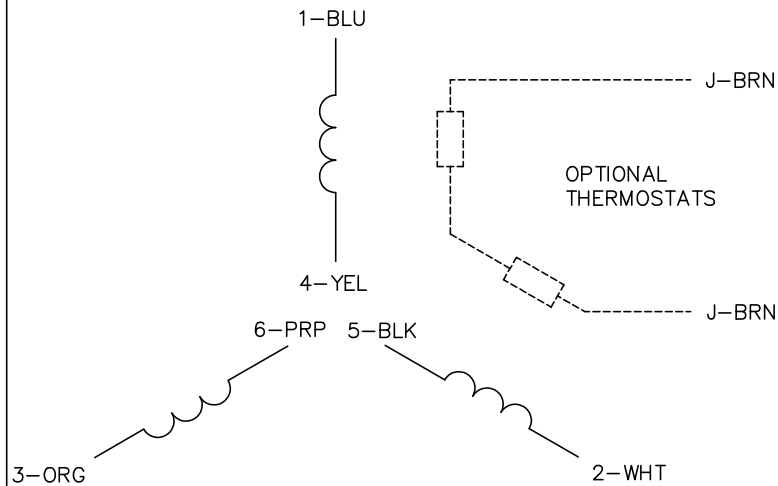
TORQUES (LB-FT): PO=18.9 PU=10.8 LR=13.3 LRA=20



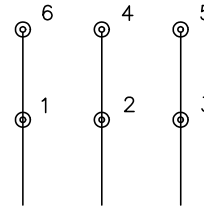
10/31/2023 ACPERF, record # 86992



CD0022

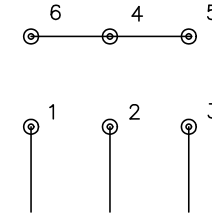


LOW VOLTAGE
(1D)



LINE

HIGH VOLTAGE
(1Y)



LINE

NOTES:

1. INTERCHANGE ANY TWO LINE LEADS TO REVERSE ROTATION.
2. OPTIONAL THERMOSTATS ARE PROVIDED WHEN SPECIFIED.
3. ACTUAL NUMBER OF INTERNAL PARALLEL CIRCUITS MAY BE A MULTIPLE OF THOSE SHOWN ABOVE.
4. LEAD COLORS ARE OPTIONAL. LEADS MUST ALWAYS BE NUMBERED AS SHOWN.

REV. DESC: REVISE TO SHOW OPTIONAL COLORS			
REV. LTR: F	BY: JLP	REVISED: 01/21/99 3:54	TDR: 0171435
CD0022		FILE: AAA00005144	MDL: -
		MTL: -	

BALDOR ELECTRIC Co.

3PH, DV, 6 LEADS, DELTA/WYE CONNECTION

CD0022