



Customer information packet

EM3538

.5HP, 1770RPM, 3PH, 60HZ, 56, 3512M, TEFC, F1, N

Class - None

Division - Not Applicable

Specifications

Enclosure	TEFC
Frame	56
Frame Material	Steel
Frequency	60.00 Hz
Motor Letter Type	Three Phase
Output @ Frequency	.500 HP @ 60 HZ
Phase	3
Synchronous Speed @ Frequency	1800 RPM @ 60 HZ
Voltage @ Frequency	230.0 V @ 60 HZ 460.0 V @ 60 HZ
XP Class and Group	None
XP Division	Not Applicable
Agency Approvals	CSA UR
Ambient Temperature	40 °C
Auxillary Box	No Auxillary Box
Auxillary Box Lead Termination	None
Base Indicator	Rigid
Bearing Grease Type	Polyrex EM (-20F +300F)
Blower	None
Current @ Voltage	.900 A @ 460.0 V 1.800 A @ 230.0 V 1.900 A @ 208.0 V
Design Code	B
Drip Cover	No Drip Cover
Duty Rating	CONT
Efficiency @ 100% Load	78.2 %
Electrically Isolated Bearing	Not Electrically Isolated
Feedback Device	NO FEEDBACK
Front Shaft Indicator	None
Heater Indicator	No Heater
High Voltage Full Load Amps	0.9 a

Part detail

Revision	F
Type	AC
Mech. spec.	35A011
Base	
Status	PRD/A
Elec. spec.	35WGG155
Layout	35LYA011
Eff. date	04-12-2023
CD Diagram	CD0005
Poles	04
Leads	9#18
Proprietary	False
Created date	09-24-2021

Insulation Class	F
Inverter Code	Inverter Duty
KVA Code	M
Lifting Lugs	No Lifting Lugs
Locked Bearing Indicator	No Locked Bearing
Motor Lead Quantity/Wire Size	9 @ 18 AWG
Motor Lead Termination	Flying Leads
Motor Standards	NEMA
Motor Type	3512M
Mounting Arrangement	F1
Number of Poles	4
Overall Length	12.23 IN
Power Factor	62
Product Family	General Purpose
Pulley End Bearing Type	Ball
Pulley Face Code	Standard
Pulley Shaft Indicator	Standard
Rodent Screen	None
Service Factor	1.15
Shaft Diameter	0.625 IN
Shaft Ground Indicator	No Shaft Grounding
Shaft Rotation	Reversible
Shaft Slinger Indicator	No Slinger
Speed	1770 rpm
Speed Code	Single Speed
Starting Method	Direct on line
Thermal Device - Bearing	None
Thermal Device - Winding	None
Vibration Sensor Indicator	No Vibration Sensor
Winding Thermal 1	None
Winding Thermal 2	None

Nameplate

NP2116L									
CAT.NO.	EM3538								
SPEC.	35A011G155G2								
HP	.5								
VOLTS	230/460								
AMP	1.8/.9								
RPM	1770								
FRAME	56			HZ	60		PH	3	
SER.F.	1.15	CODE	M	DES	B	CL	F		
NEMA-NOM-EFF	78.2	PF	62						
RATING	40C AMB-CONT								
CC				USABLE AT 208V	N/A				
DE	6205	ODE	6203						
ENCL	TEFC	SN							
	SFA 1.9/0.95								

AC Induction Motor Performance Data

Record # 82210

Typical performance - not guaranteed values

Winding: 35WGG155-R004		Type: 3512M	Enclosure: TEFC	
Nameplate Data			460 V, 60 Hz: High Voltage Connection	
Rated Output (HP)	.5	Full Load Torque	1.49 LB-FT	
Volts	230/460	Start Configuration	direct on line	
Full Load Amps	1.8/9	Breakdown Torque	6.28 LB-FT	
R.P.M.	1770	Pull-up Torque	3.26 LB-FT	
Hz	60 Phase	3	Locked-rotor Torque	4.04 LB-FT
NEMA Design Code	B KVA Code	M	Starting Current	6.71 A
Service Factor (S.F.)		1.15	No-load Current	0.792 A
NEMA Nom. Eff.	80 Power Factor	65	Line-line Res. @ 25°C	43.2 Ω
Rating - Duty		40C AMB-CONT	Temp. Rise @ Rated Load	22°C
S.F. Amps		1.9/0.95	Temp. Rise @ S.F. Load	25°C
			Locked-rotor Power Factor	70.8
			Rotor inertia	0.0866 lb-ft ²

Load Characteristics 460 V, 60 Hz, 0.5 HP

% of Rated Load	25	50	75	100	125	150	S.F.
Power Factor	27	41	52	62	69	75	69
Efficiency	56.5	70.7	76.5	78.9	80	80	80
Speed	1792	1786	1779	1771	1763	1755	1763
Line amperes	0.795	0.827	0.889	0.966	1.06	1.18	1.06

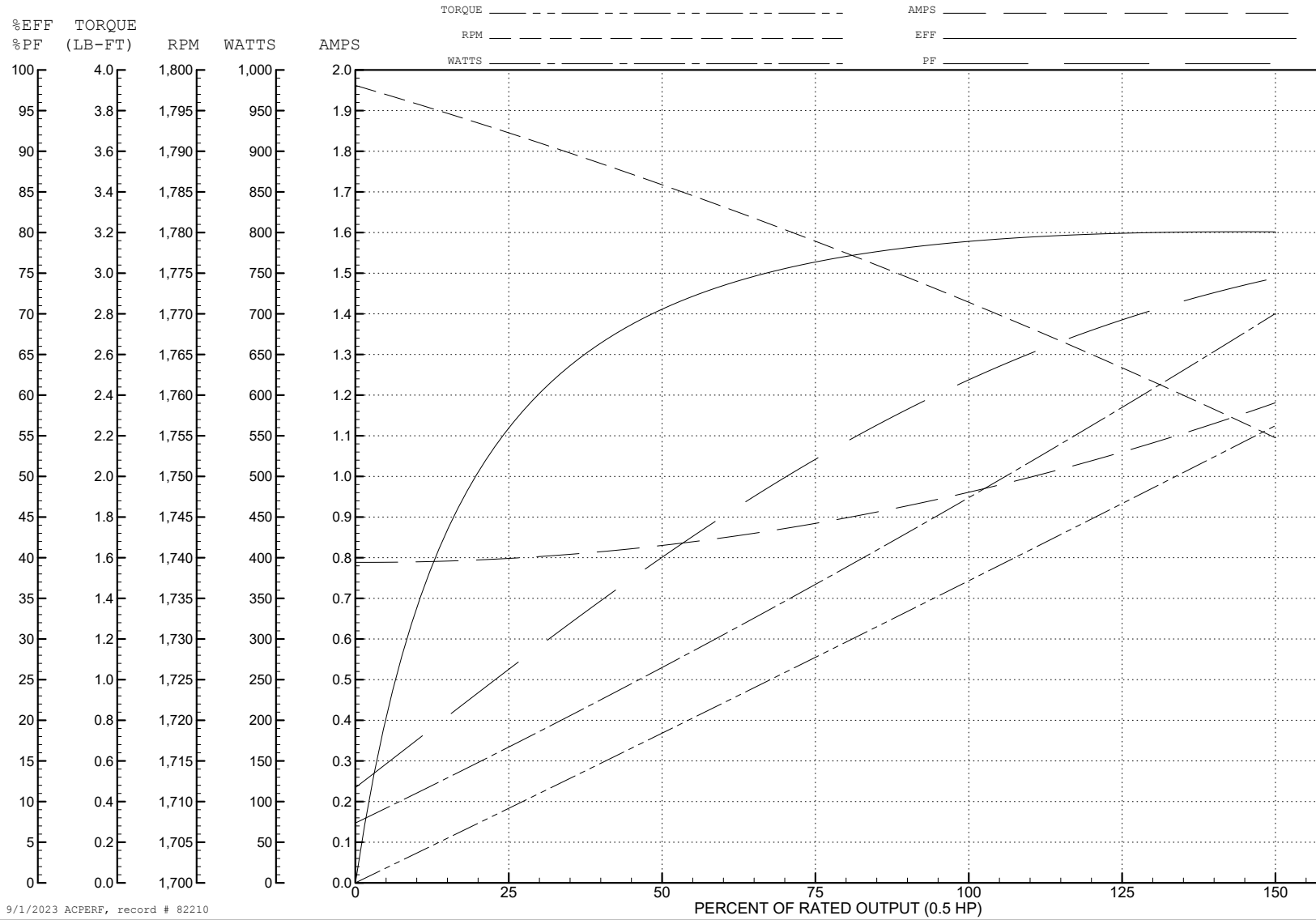
ABB Motors and Mechanical Inc.

WINDING # 35WGG155

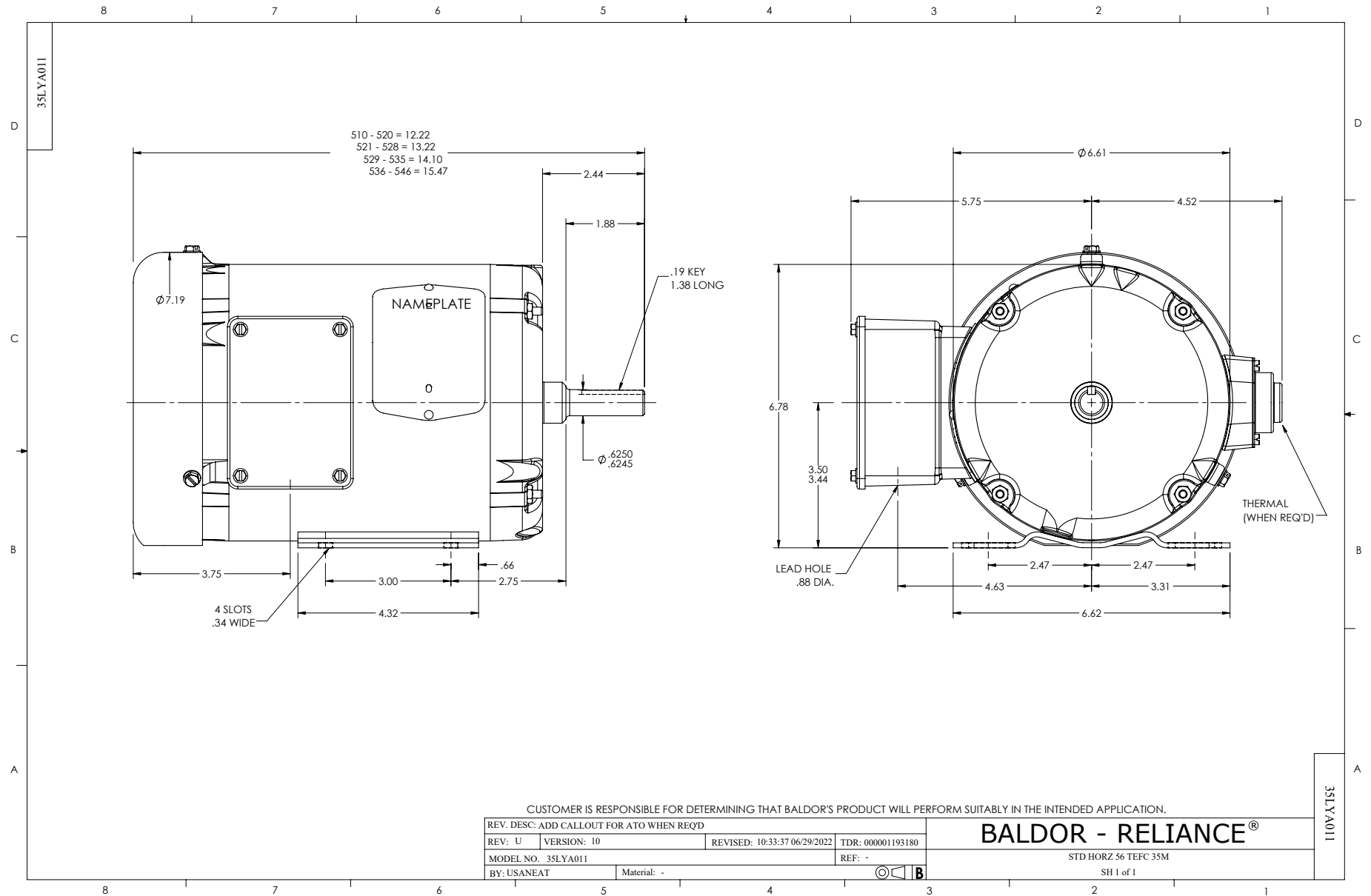
0.5 HP 3 PH 60 HZ 1770 RPM 460 V 3512M

Typical performance - not guaranteed values.

TORQUES (LB-FT): PO=6.28 PU=3.26 LR=4.04 LRA=6.71



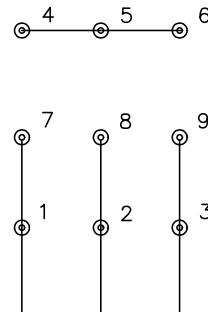
9/1/2023 ACPERF, record # 82210



CD0005

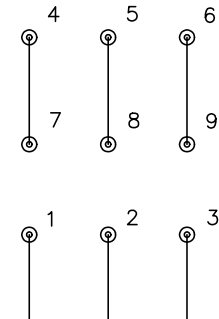


LOW VOLTAGE
(2Y)



LINE

HIGH VOLTAGE
(1Y)



LINE

NOTES:

1. INTERCHANGE ANY TWO LINE LEADS TO REVERSE ROTATION.
2. OPTIONAL THERMOSTATS ARE PROVIDED WHEN SPECIFIED.
3. ACTUAL NUMBER OF INTERNAL PARALLEL CIRCUITS MAY BE A MULTIPLE OF THOSE SHOWN ABOVE.
4. LEAD COLORS ARE OPTIONAL. LEADS MUST ALWAYS BE NUMBERED AS SHOWN.

CD0005

REV. DESC: REVISE TO SHOW OPTIONAL COLORS			
REV. LTR: E	BY: JLP	REVISED: 01/19/99 10:15	TDR: 0171435
S00000		FILE: AAA00005140	MDL: -
		MTL: -	

BALDOR ELECTRIC Co.

3PH, DV, 9 LEADS