

BALDOR • RELIANCE

Customer information packet

EM2539T-12

40HP, 1770RPM, 3PH, 60HZ, 324T, 4064M, OPSB, F1

Specifications

Enclosure	OPSB
Frame	324T
Frame Material	Steel
Frequency	60.00 Hz
Motor Letter Type	Three Phase
Output @ Frequency	40.000 HP @ 60 HZ
Phase	3
Synchronous Speed @ Frequency	1800 RPM @ 60 HZ
Voltage @ Frequency	230.0 V @ 60 HZ 460.0 V @ 60 HZ
Agency Approvals	CSA CSA EEV NEMA PREMIUM UR
Ambient Temperature	40 °C
Auxillary Box	No Auxillary Box
Auxillary Box Lead Termination	None
Base Indicator	Rigid
Bearing Grease Type	Polyrex EM (-20F +300F)
Blower	None
Current @ Voltage	47.000 A @ 460.0 V 94.000 A @ 230.0 V
Design Code	A
Drip Cover	No Drip Cover
Duty Rating	CONT
Efficiency @ 100% Load	94.1 %
Electrically Isolated Bearing	Not Electrically Isolated
Feedback Device	NO FEEDBACK
Front Face Code	Standard
Front Shaft Indicator	None
Heater Indicator	No Heater
High Voltage Full Load Amps	47.0 a

Part detail

Revision	R
Type	AC
Mech. spec.	40E212
Base	
Status	PRD/A
Elec. spec.	40WGX189
Layout	40LYE212
Eff. date	04-29-2019
CD Diagram	CD0104
Poles	04
Leads	12#8
Proprietary	False
Created date	08-03-2010

Insulation Class	F
Inverter Code	Inverter Ready
KVA Code	G
Lifting Lugs	Standard Lifting Lugs
Locked Bearing Indicator	No Locked Bearing
Motor Lead Exit	Ko Box
Motor Lead Quantity/Wire Size	12 @ 8 AWG
Motor Lead Termination	Flying Leads
Motor Standards	NEMA
Motor Type	4064M
Mounting Arrangement	F1
Number of Poles	4
Overall Length	27.19 IN
Power Factor	82
Product Family	General Purpose
Pulley End Bearing Type	Ball
Pulley Face Code	Standard
Pulley Shaft Indicator	Standard
Rodent Screen	None
Service Factor	1.15
Shaft Diameter	2.125 IN
Shaft Extension Location	Pulley End
Shaft Ground Indicator	No Shaft Grounding
Shaft Rotation	Reversible
Shaft Slinger Indicator	No Slinger
Speed	1770 rpm
Speed Code	Single Speed
Starting Method	Wye Start - Delta Run
Thermal Device - Bearing	None
Thermal Device - Winding	None
Vibration Sensor Indicator	No Vibration Sensor
Winding Thermal 1	None
Winding Thermal 2	None

Nameplate

NP3554LUA

CAT.NO.	EM2539T-12	P/N		ENCL	OPSB
SPEC.	40E212X189	CC	010A	FRAME	324T
HP	40	CLASS	F	HZ	60
RPM	1770	PH	3	DES	A
VOLTS	230/460	CODE	G	ODE BRG	6309
AMPS	94/47	USABLE AT 208V			
RATING	40C AMB-CONT	NEMA-NOM-EFF	94.1	GREASE	POLYREX EM
PF	82	SER.F.	1.15		
USABLE AT	50HZ 40HP 190/380V 114/57A		SF 1.0		
HTR-VOLTS	HTR-AMPS	MAX. SPACE HEATER TEMP.			

Parts list

Part number	Description	Quantity
SA200903	SA 40E212X189	1.000 ea
RA188213	RA 40E212X189	1.000 ea
HA6361A01	LIFTING LUG FOR 37, 39 & 40 FRAME ZINC	2.000 ea
HA6017	CAST ADAPTER, 40,42 KOBX	1.000 ea
19XW3118A12	.31-18 X .75 HEX WASHER HEAD TAPTITE II	2.000 ea
HW1001A31	LOCKWASHER 5/16, ZINC PLT.591 OD, .319 I	2.000 ea
WD1000B25	GND LUG, BURNDY L125HP OR T&B L125HP-BB	1.000 ea
19XW3118G08	.31-18X.50,HEX WSHR HD,TAPTITE 2,GREEN	1.000 ea
10CB3001	CONDUIT BOX CAST W/2.500 LEAD HOLE	1.000 ea
19XW3118A12	.31-18 X .75 HEX WASHER HEAD TAPTITE II	4.000 ea
HW1001A31	LOCKWASHER 5/16, ZINC PLT.591 OD, .319 I	4.000 ea
40EP3200A02	STD FREP OPEN 309 BRG	1.000 ea
HW5100A11	W3917-042 WVY WSHR (WB)	1.000 ea
40EP3201A01	PU ENDPLATE, MACH - OPEN - FOR 312 BRG	1.000 ea
XY3816A12	3/8-16 FINISHED NUT	8.000 ea
10CB3500SP	CONDUIT BOX LID, CAST	1.000 ea
51XW2520A12	.25-20 X .75, TAPTITE II, HEX WSHR SLTD	4.000 ea
HW2501H33	KEY, 1/2 SQ X 3.875	1.000 ea
LB1115N	LABEL,LIFTING DEVICE (ON ROLLS)	1.000 ea
MN416A01	TAG-INSTAL-MAINT no wire (2200bx) 4/22	1.000 ea
HA4051A00	PLASTIC CAP FOR GREASE FITTING	1.000 ea
HW4500A03	GREASE FITTING, .125 NPT 1610(ALEMITE) 8	1.000 ea
HW4500A20	1/8NPT SL PIPE PLUG	1.000 ea
MJ1000A02	GREASE, POLYREX EM EXXON	0.050 lb
HA4051A00	PLASTIC CAP FOR GREASE FITTING	1.000 ea
HW4500A03	GREASE FITTING, .125 NPT 1610(ALEMITE) 8	1.000 ea
HW4500A20	1/8NPT SL PIPE PLUG	1.000 ea
HA3159A08	THRUBOLT- .38-16 X 20.00 LONG STUD	4.000 ea
MG1000Y03	MUNSELL 2.53Y 6.70/ 4.60, GLOSS 20,	0.030 ga
85XU0407S04	4X1/4 U DRIVE PIN STAINLESS	4.000 ea
40AD2002A01	LEXAN BAFFLE 40 FR OPEN	1.000 ea

40AD2002A01	LEXAN BAFFLE 40 FR OPEN	1.000 ea
LB1119N	WARNING LABEL	1.000 ea
LC0104A01	CONNECTION DIAGRAM	1.000 ea
NP3554LUA	SS SUPER-E VPWM INV READY UL CSA-EEV PRE	1.000 ea
40PA1000	PACKAGING GROUP	1.000 ea

AC Induction Motor Performance Data

Record # 32039

Typical performance - not guaranteed values

Winding: 40WGX189-R001		Type: 4064M	Enclosure: OPSB		
Nameplate Data			460 V, 60 Hz: High Voltage Connection		
Rated Output (HP)	40	Full Load Torque	119 LB-FT		
Volts	230/460	Start Configuration	direct on line		
Full Load Amps	94/47	Breakdown Torque	421 LB-FT		
R.P.M.	1770	Pull-up Torque	179 LB-FT		
Hz	60 Phase	3	Locked-rotor Torque	235 LB-FT	
NEMA Design Code	A	KVA Code	G	Starting Current	316 A
Service Factor (S.F.)	1.15	No-load Current	19.3 A		
NEMA Nom. Eff.	94.1	Power Factor	82	Line-line Res. @ 25°C	0.155 Ω
Rating - Duty	40C AMB-CONT		Temp. Rise @ Rated Load	41°C	
S.F. Amps			Temp. Rise @ S.F. Load	50°C	
			Locked-rotor Power Factor	32	
			Rotor inertia	5.09 LB-FT ²	

Load Characteristics 460 V, 60 Hz, 40 HP

% of Rated Load	25	50	75	100	125	150	S.F.
Power Factor	45	68	79	84	86	86	85
Efficiency	92.7	94.6	94.8	94.4	93.6	92.9	93.9
Speed	1792	1785	1777	1770	1761	1751	1765
Line amperes	22.3	29	37.7	47.4	58.2	70.4	53.9

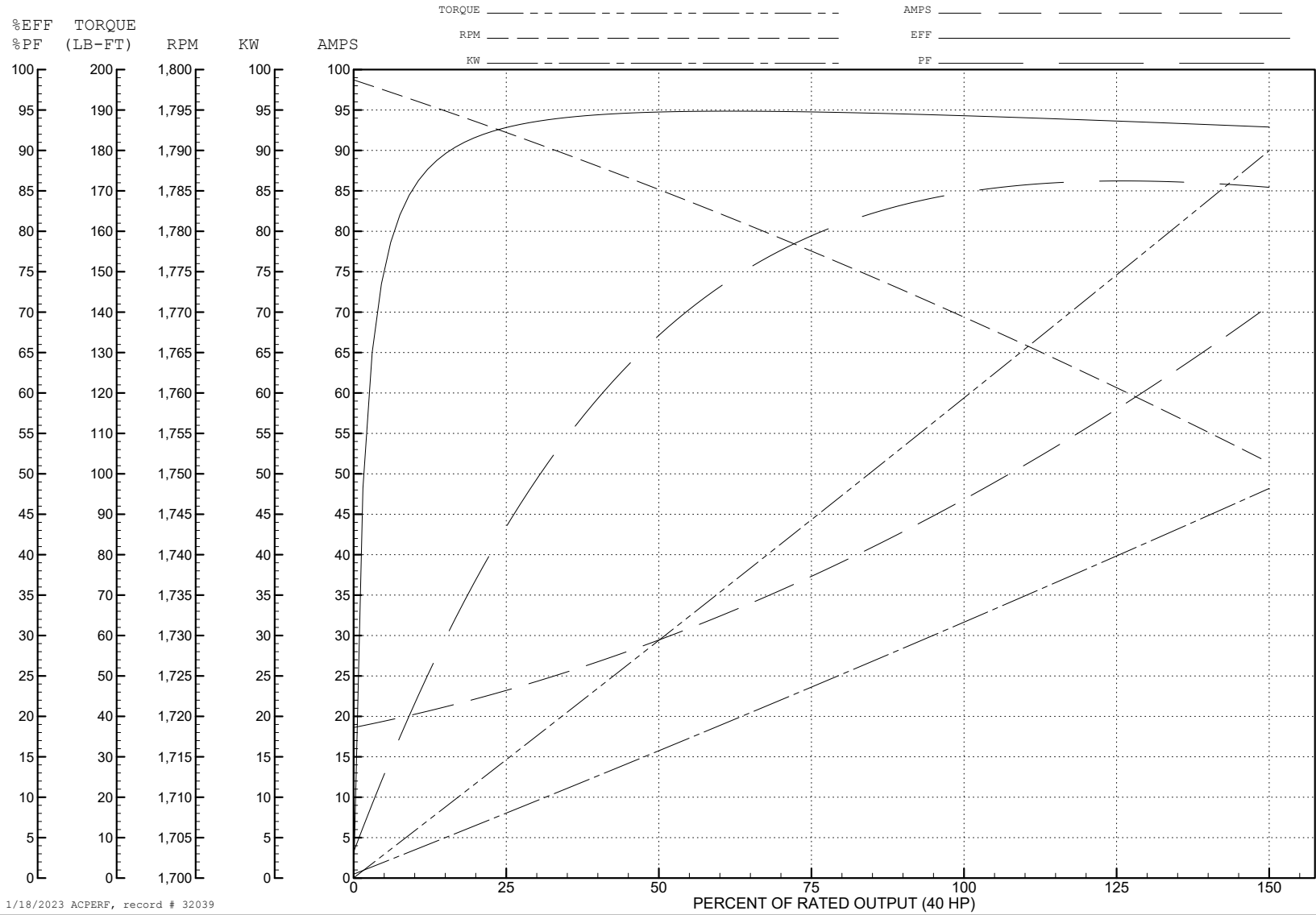
ABB Motors and Mechanical Inc.

WINDING # 40WGx189

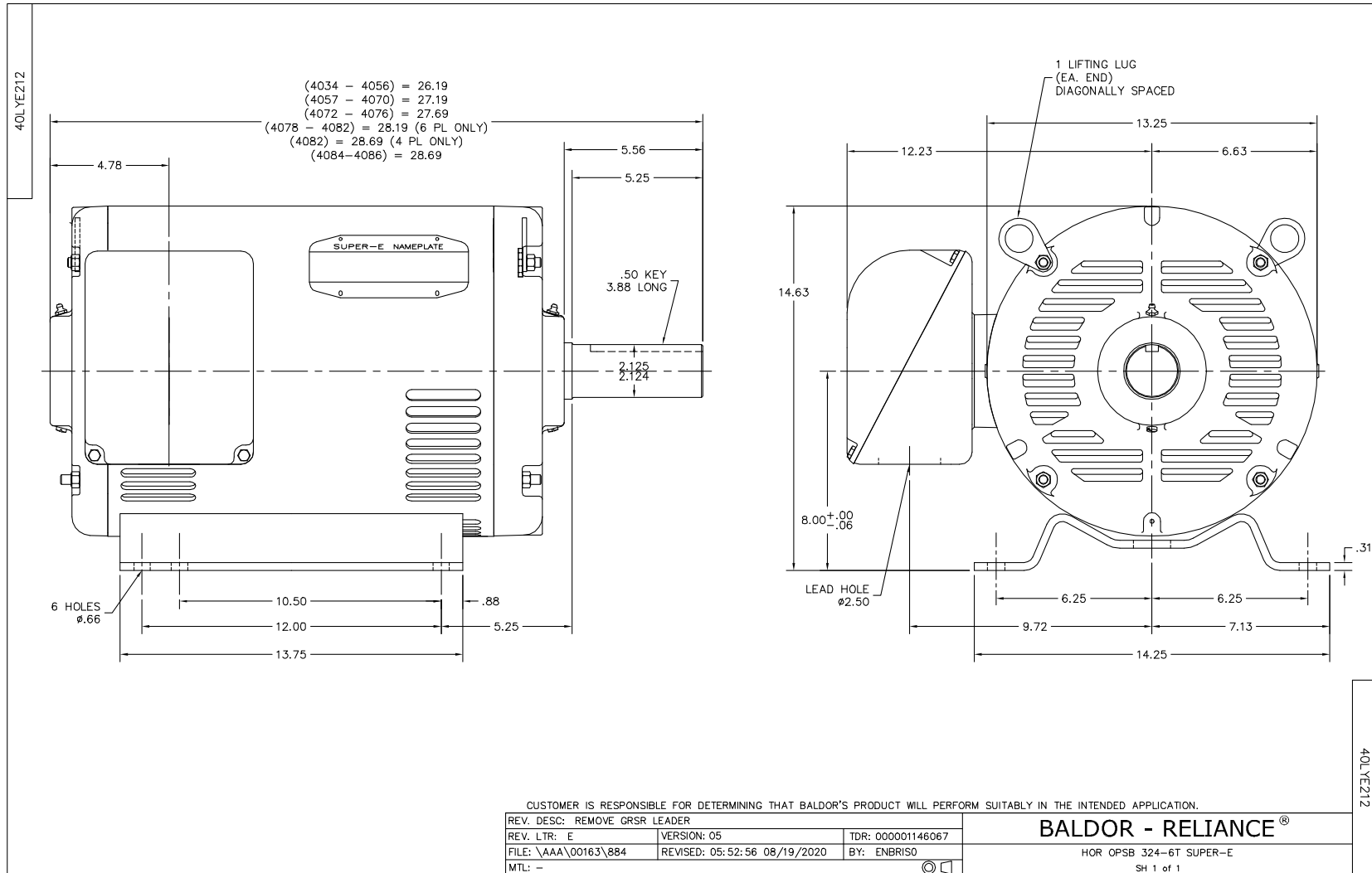
40 HP 3 PH 60 HZ 1770 RPM 460 V 4064M

Typical performance - not guaranteed values.

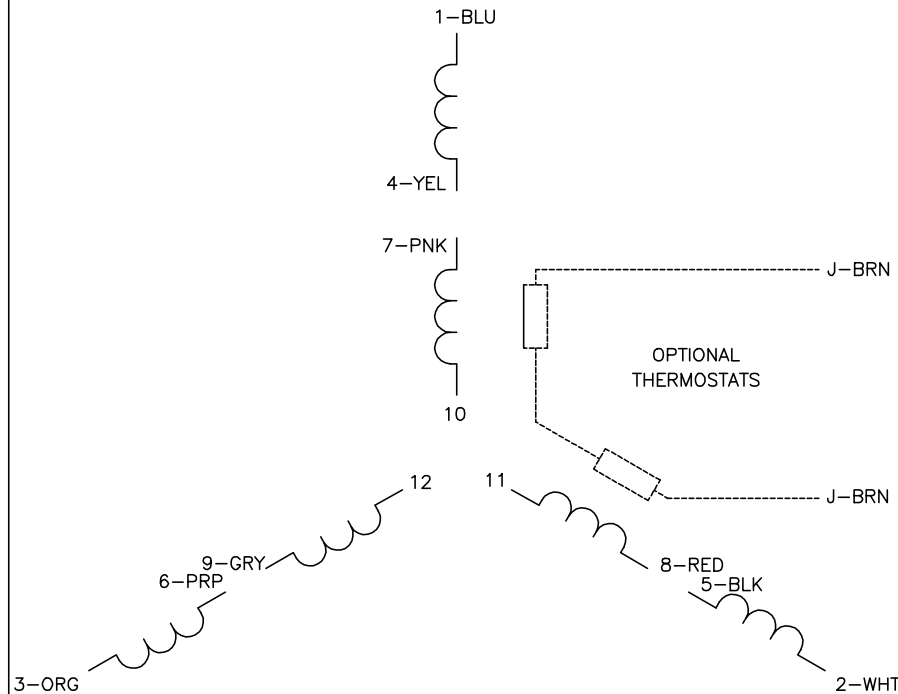
TORQUES (LB-FT): PO=421 PU=179 LR=235 LRA=316



1/18/2023 ACPERF, record # 32039

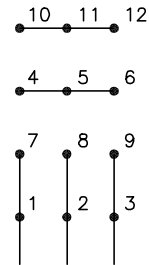


CD0104



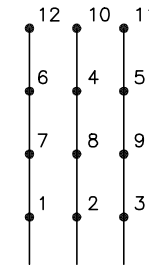
LOW VOLTAGE

START (2Y)



LINE

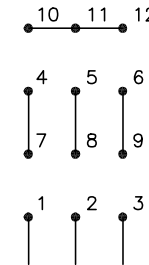
RUN (2D)



LINE

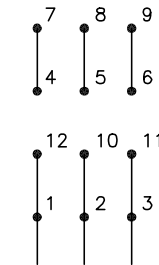
HIGH VOLTAGE

START (1Y)



LINE

RUN (1D)



LINE

NOTES:

1. INTERCHANGE ANY TWO LINE LEADS TO REVERSE ROTATION.
2. OPTIONAL THERMOSTATS ARE PROVIDED WHEN SPECIFIED.
3. ACTUAL NUMBER OF INTERNAL PARALLEL CIRCUITS MAY BE A MULTIPLE OF THOSE SHOWN ABOVE.
4. LEAD COLORS ARE OPTIONAL. LEADS MUST ALWAYS BE NUMBERED AS SHOWN.

CD0104

REV. DESC: ADD CLASS CONN00000007		
REV. LTR: D	VERSION: 01	TDR: 000001099922
FILE: \AAA\00008\377	REVISED: 09:02:55 02/19/2019	BY: ENBRIRO
MTL: -	© □	

BALDOR - RELIANCE®

3PH, DV, 12 LEADS, Y START/D RUN

SH 1 of 1