

**BALDOR • RELIANCE**

---

# Customer information packet

## EM2536T

30HP, 1180RPM, 3PH, 60HZ, 326T, 4084M, OPSB, F1

## Specifications

Enclosure	OPSB
Frame	326T
Frame Material	Steel
Frequency	60.00 Hz
Motor Letter Type	Three Phase
Output @ Frequency	30.000 HP @ 60 HZ
Phase	3
Synchronous Speed @ Frequency	1200 RPM @ 60 HZ
Voltage @ Frequency	460.0 V @ 60 HZ 230.0 V @ 60 HZ
Agency Approvals	CSA CSA EEV NEMA PREMIUM UR
Ambient Temperature	40 °C
Auxillary Box	No Auxillary Box
Auxillary Box Lead Termination	None
Base Indicator	Rigid
Bearing Grease Type	Polyrex EM (-20F +300F)
Blower	None
Current @ Voltage	82.000 A @ 208.0 V 78.000 A @ 230.0 V 39.000 A @ 460.0 V
Design Code	A
Drip Cover	No Drip Cover
Duty Rating	CONT
Efficiency @ 100% Load	93.6 %
Electrically Isolated Bearing	Not Electrically Isolated
Feedback Device	NO FEEDBACK
Front Face Code	Standard
Front Shaft Indicator	None
Heater Indicator	No Heater

## Part detail

Revision	X
Type	AC
Mech. spec.	40E212
Base	
Status	PRD/A
Elec. spec.	40WGX122
Layout	40LYE212
Eff. date	08-21-2018
CD Diagram	CD0005
Poles	06
Leads	9#8
Proprietary	False
Created date	06-03-2009

High Voltage Full Load Amps	39.0 a
Insulation Class	F
Inverter Code	Inverter Ready
KVA Code	H
Lifting Lugs	Standard Lifting Lugs
Locked Bearing Indicator	No Locked Bearing
Motor Lead Exit	Ko Box
Motor Lead Quantity/Wire Size	9 @ 8 AWG
Motor Lead Termination	Flying Leads
Motor Standards	NEMA
Motor Type	4084M
Mounting Arrangement	F1
Number of Poles	6
Overall Length	28.69 IN
Power Factor	77
Product Family	General Purpose
Pulley End Bearing Type	Ball
Pulley Face Code	Standard
Pulley Shaft Indicator	Standard
Rodent Screen	None
Service Factor	1.15
Shaft Diameter	2.125 IN
Shaft Extension Location	Pulley End
Shaft Ground Indicator	No Shaft Grounding
Shaft Rotation	Reversible
Shaft Slinger Indicator	No Slinger
Speed	1180 rpm
Speed Code	Single Speed
Starting Method	Direct on line
Thermal Device - Bearing	None
Thermal Device - Winding	None
Vibration Sensor Indicator	No Vibration Sensor
Winding Thermal 1	None
Winding Thermal 2	None

**Nameplate**

**NP2138LUA**

<b>CAT.NO.</b>	EM2536T	<b>P/N</b>		<b>ENCLOSURE</b>	OPSB
<b>SPEC.</b>	40E212X122	<b>CC</b>	010A	<b>FRAME</b>	326T
<b>HP</b>	30	<b>CLASS</b>	F	<b>HZ</b>	60
<b>RPM</b>	1180	<b>PH</b>	3	<b>DES</b>	A
<b>VOLT</b>	230/460	<b>KVA-CODE</b>	H	<b>ODE BRG</b>	6309
<b>AMP</b>	78/39	<b>USABLE AT 208V</b>	82	<b>DE BRG</b>	6312
<b>RATING</b>	40C AMB-CONT	<b>GREASE</b>	POLYREX EM		
<b>NEMA-NOM-EFF</b>	93.6	<b>PF</b>	77	<b>SER.F.</b>	1.15
	50Hz 30Hp 190/380V 88/44A			SF 1.0	
<b>HTR-VOLTS</b>	<b>HTR-AMPS</b>				

## Parts list

Part number	Description	Quantity
SA182829	SA 40E212X122	1.000 ea
RA170721	RA 40E212X122	1.000 ea
HA6361A01	LIFTING LUG FOR 37, 39 & 40 FRAME ZINC	2.000 ea
HA6017	CAST ADAPTER, 40,42 KOBX	1.000 ea
19XW3118A12	.31-18 X .75 HEX WASHER HEAD TAPTITE II	2.000 ea
HW1001A31	LOCKWASHER 5/16, ZINC PLT.591 OD, .319 I	2.000 ea
WD1000B25	GND LUG, BURNDY L125HP OR T&B L125HP-BB	1.000 ea
19XW3118G08	.31-18X.50,HEX WSHR HD,TAPTITE 2,GREEN	1.000 ea
10CB3001	CONDUIT BOX CAST W/2.500 LEAD HOLE	1.000 ea
19XW3118A12	.31-18 X .75 HEX WASHER HEAD TAPTITE II	4.000 ea
HW1001A31	LOCKWASHER 5/16, ZINC PLT.591 OD, .319 I	4.000 ea
40EP3200A02	STD FREP OPEN 309 BRG	1.000 ea
HW5100A11	W3917-042 WVY WSHR (WB)	1.000 ea
40EP3201A01	PU ENDPLATE, MACH - OPEN - FOR 312 BRG	1.000 ea
XY3816A12	3/8-16 FINISHED NUT	8.000 ea
10CB3500SP	CONDUIT BOX LID, CAST	1.000 ea
51XW2520A12	.25-20 X .75, TAPTITE II, HEX WSHR SLTD	4.000 ea
HW2501H33	KEY, 1/2 SQ X 3.875	1.000 ea
LB1115N	LABEL,LIFTING DEVICE (ON ROLLS)	1.000 ea
MN416A01	TAG-INSTAL-MAINT no wire (2200bx) 4/22	1.000 ea
HA4051A00	PLASTIC CAP FOR GREASE FITTING	1.000 ea
HW4500A03	GREASE FITTING, .125 NPT 1610(ALEMITE) 8	1.000 ea
HW4500A20	1/8NPT SL PIPE PLUG	1.000 ea
MJ1000A02	GREASE, POLYREX EM EXXON	0.050 lb
HA4051A00	PLASTIC CAP FOR GREASE FITTING	1.000 ea
HW4500A03	GREASE FITTING, .125 NPT 1610(ALEMITE) 8	1.000 ea
HW4500A20	1/8NPT SL PIPE PLUG	1.000 ea
HA3159A12	THRUBOLT.38-16 X 21.50 LG, SEE ADD. DATA	4.000 ea
MG1000Y03	MUNSELL 2.53Y 6.70/ 4.60, GLOSS 20,	0.030 ga
85XU0407S04	4X1/4 U DRIVE PIN STAINLESS	4.000 ea
40AD2002A01	LEXAN BAFFLE 40 FR OPEN	1.000 ea

40AD2002A01	LEXAN BAFFLE 40 FR OPEN	1.000 ea
LC0005E01	CONN.DIA./WARNING LABEL (LC0005/LB1119N)	1.000 ea
NP2138LUA	ALUM SUPER-E UL CSA-EEV PREM CC (300SER)	1.000 ea
40PA1000	PACKAGING GROUP	1.000 ea

**AC Induction Motor Performance Data**

Record # 66226

Typical performance - not guaranteed values

<b>Winding:</b> 40WGX122-R001		<b>Type:</b> 4084M		<b>Enclosure:</b> OPSB	
<b>Nameplate Data</b>			<b>460 V, 60 Hz: High Voltage Connection</b>		
<b>Rated Output (HP)</b>	30		<b>Full Load Torque</b>	133.3 LB-FT	
<b>Volts</b>	230/460		<b>Start Configuration</b>	direct on line	
<b>Full Load Amps</b>	78/39		<b>Breakdown Torque</b>	417 LB-FT	
<b>R.P.M.</b>	1180		<b>Pull-up Torque</b>	187 LB-FT	
<b>Hz</b>	60	<b>Phase</b>	3	<b>Locked-rotor Torque</b>	233 LB-FT
<b>NEMA Design Code</b>	A	<b>KVA Code</b>	H	<b>Starting Current</b>	267 A
<b>Service Factor (S.F.)</b>	1.15		<b>No-load Current</b>	18.1 A	
<b>NEMA Nom. Eff.</b>	93.6	<b>Power Factor</b>	77	<b>Line-line Res. @ 25°C</b>	0.2452 Ω
<b>Rating - Duty</b>	40C AMB-CONT		<b>Temp. Rise @ Rated Load</b>	40°C	
<b>S.F. Amps</b>			<b>Temp. Rise @ S.F. Load</b>	49°C	
			<b>Locked-rotor Power Factor</b>	28.6	

**Load Characteristics 460 V, 60 Hz, 30 HP**

<b>% of Rated Load</b>	<b>25</b>	<b>50</b>	<b>75</b>	<b>100</b>	<b>125</b>	<b>150</b>	<b>S.F.</b>
<b>Power Factor</b>	39	60	72	77	80	81	79
<b>Efficiency</b>	89.6	93.2	93.8	93.6	92.9	92.1	93.2
<b>Speed</b>	1196.1	1192.3	1188.4	1184.2	1179.4	1174.2	1181
<b>Line amperes</b>	20.2	25	31.5	39	47.4	56.7	44

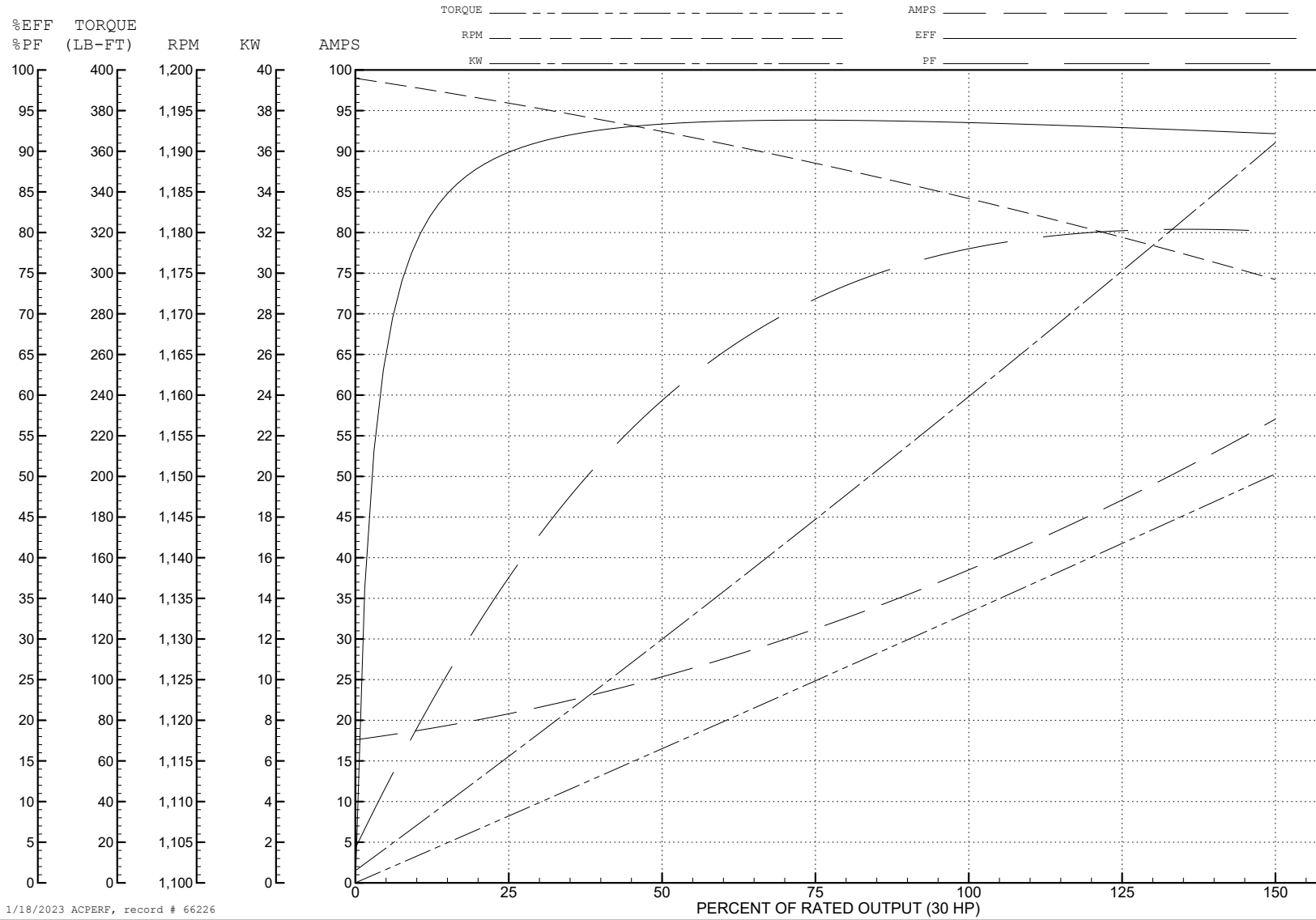
ABB Motors and Mechanical Inc.

WINDING # 40WGX122

30 HP 3 PH 60 HZ 1180 RPM 460 V 4084M

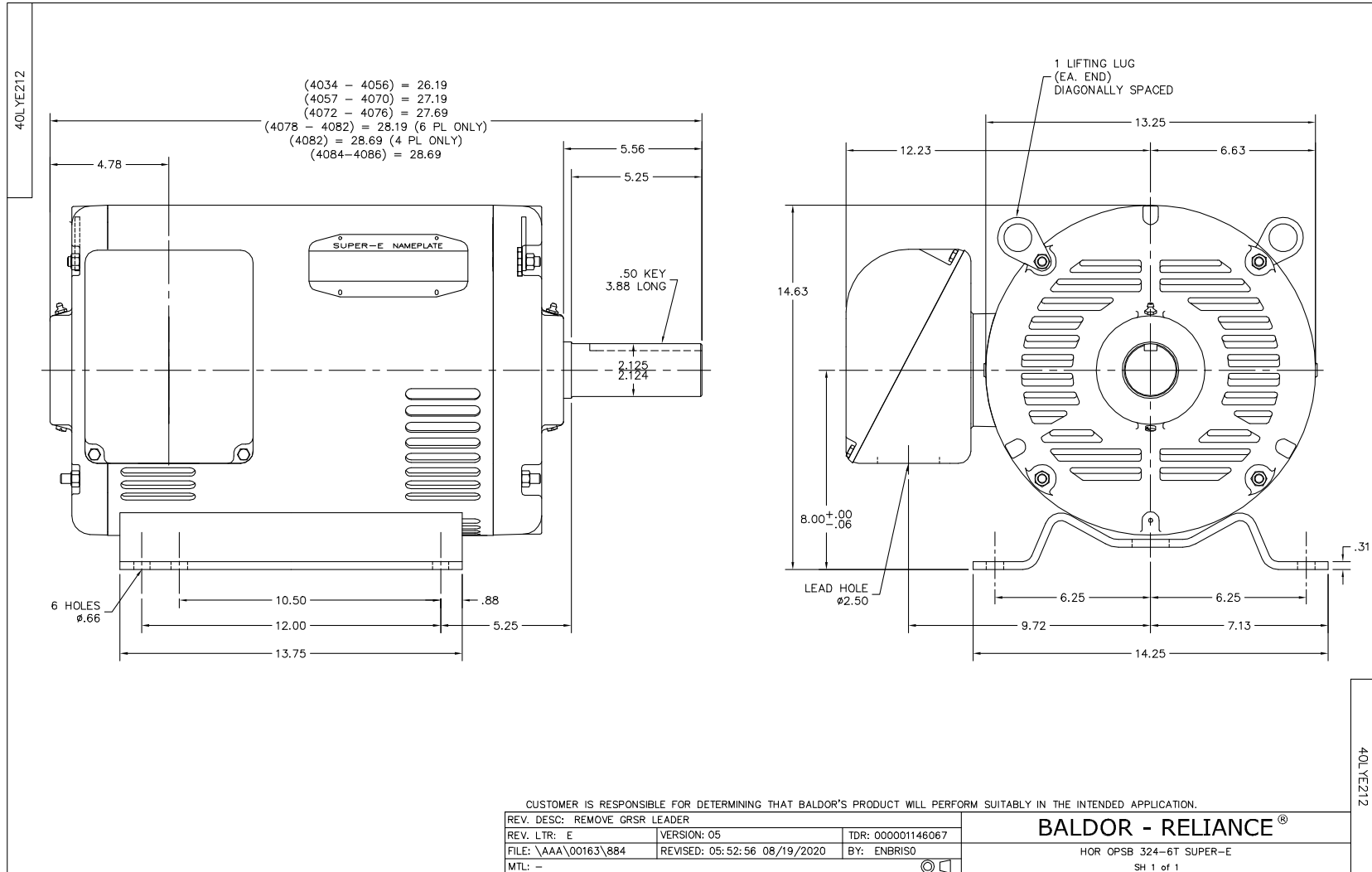
Typical performance - not guaranteed values.

TORQUES (LB-FT): PO=417 PU=187 LR=233 LRA=267



1/18/2023 ACPERF, record # 66226





CD0005



LOW VOLTAGE  
(2Y)



LINE

HIGH VOLTAGE  
(1Y)



LINE

NOTES:

1. INTERCHANGE ANY TWO LINE LEADS TO REVERSE ROTATION.
2. OPTIONAL THERMOSTATS ARE PROVIDED WHEN SPECIFIED.
3. ACTUAL NUMBER OF INTERNAL PARALLEL CIRCUITS MAY BE A MULTIPLE OF THOSE SHOWN ABOVE.
4. LEAD COLORS ARE OPTIONAL. LEADS MUST ALWAYS BE NUMBERED AS SHOWN.

CD0005

REV. DESC: REVISE TO SHOW OPTIONAL COLORS			
REV. LTR: E	BY: JLP	REVISED: 01/19/99 10:15	TDR: 0171435
S00000		FILE: AAA00005140	MDL: -
		MTL: -	

**BALDOR ELECTRIC Co.**

3PH, DV, 9 LEADS