



Customer information packet

EM2395T

15HP, 880RPM, 3PH, 60HZ, 286T, 1060M, TEFC, F1

Class - None

Division - Not Applicable

Specifications

Enclosure	TEFC
Frame	286T
Frame Material	Iron
Frequency	60.00 Hz
Motor Letter Type	Three Phase
Output @ Frequency	15.000 HP @ 60 HZ
Phase	3
Synchronous Speed @ Frequency	900 RPM @ 60 HZ
Voltage @ Frequency	460.0 V @ 60 HZ 230.0 V @ 60 HZ
XP Class and Group	None
XP Division	Not Applicable
Agency Approvals	CSA EEV NEMA PREMIUM NEMA_PREMIUM UR
Ambient Temperature	40 °C
Auxillary Box	No Auxillary Box
Auxillary Box Lead Termination	None
Base Indicator	Rigid
Bearing Grease Type	Polyrex EM (-20F +300F)
Blower	None
Current @ Voltage	23.000 A @ 460.0 V 46.000 A @ 230.0 V
Design Code	B
Drip Cover	No Drip Cover
Duty Rating	CONT
Efficiency @ 100% Load	89.5 %
Electrically Isolated Bearing	Not Electrically Isolated
Feedback Device	NO FEEDBACK
Front Face Code	Standard
Front Shaft Indicator	None

Part detail

Revision	P
Type	AC
Mech. spec.	10C151
Base	
Status	PRD/A
Elec. spec.	10WGZ376
Layout	10LYC151
Eff. date	07-19-2023
CD Diagram	CD0005
Poles	08
Leads	9#12
Proprietary	False
Created date	04-06-2015

Heater Indicator	No Heater
High Voltage Full Load Amps	23.0 a
Insulation Class	F
Inverter Code	Inverter Ready
KVA Code	G
Lifting Lugs	Standard Lifting Lugs
Locked Bearing Indicator	Locked Bearing
Motor Lead Exit	Ko Box
Motor Lead Quantity/Wire Size	9 @ 12 AWG
Motor Lead Termination	Flying Leads
Motor Standards	NEMA
Motor Type	1060M
Mounting Arrangement	F1
Number of Poles	8
Overall Length	27.76 IN
Power Factor	68
Product Family	General Purpose
Pulley End Bearing Type	Ball
Pulley Face Code	Standard
Pulley Shaft Indicator	Standard
Rodent Screen	None
Service Factor	1.15
Shaft Diameter	1.875 IN
Shaft Extension Location	Pulley End
Shaft Ground Indicator	No Shaft Grounding
Shaft Rotation	Reversible
Shaft Slinger Indicator	Shaft Slinger
Speed	880 rpm
Speed Code	Single Speed
Starting Method	Direct on line
Thermal Device - Bearing	None
Thermal Device - Winding	None
Vibration Sensor Indicator	No Vibration Sensor
Winding Thermal 1	None

Winding Thermal 2

None

Nameplate

NP2138L

CAT.NO.	EM2395T	P/N		ENCLOSURE	TEFC		
SPEC.	10C151Z376G1	CC	010A	FRAME	286T	S/N	
HP	15	CLASS	F	HZ	60		
RPM	880	PH	3	DES	B		
VOLT	230/460	KVA-CODE	G	ODE BRG	6309	DE BRG	6311
AMP	46/23	USABLE AT 208V	N/A				
RATING	40C AMB-CONT	GREASE	POLYREX EM				
NEMA-NOM-EFF	89.5	PF	68	SER.F.	1.15		
HTR-VOLTS		HTR-AMPS					

AC Induction Motor Performance Data

Record # 53503

Typical performance - not guaranteed values

Winding: 10WGZ376-R001		Type: 1060M		Enclosure: TEFC	
Nameplate Data			460 V, 60 Hz: High Voltage Connection		
Rated Output (HP)	15	Full Load Torque	88.8 LB-FT		
Volts	230/460	Start Configuration	direct on line		
Full Load Amps	46/23	Breakdown Torque	207 LB-FT		
R.P.M.	880	Pull-up Torque	91 LB-FT		
Hz	60 Phase	3	Locked-rotor Torque	114 LB-FT	
NEMA Design Code	B KVA Code	G	Starting Current	106 A	
Service Factor (S.F.)	1.15	No-load Current	13.8 A		
NEMA Nom. Eff.	89.5 Power Factor	68	Line-line Res. @ 25°C	0.66153 Ω	
Rating - Duty	40C AMB-CONT		Temp. Rise @ Rated Load	60°C	
S.F. Amps			Temp. Rise @ S.F. Load	73°C	
			Locked-rotor Power Factor	31.7	

Load Characteristics 460 V, 60 Hz, 15 HP

% of Rated Load	25	50	75	100	125	150	S.F.
Power Factor	29	48	60	67	70	72	69
Efficiency	82	88.3	89.7	89.6	88.7	87.2	89.1
Speed	896.3	892.8	888.8	884.2	878.6	871.7	881
Line amperes	14.5	16.5	19.5	23.4	28.1	33.6	26.2

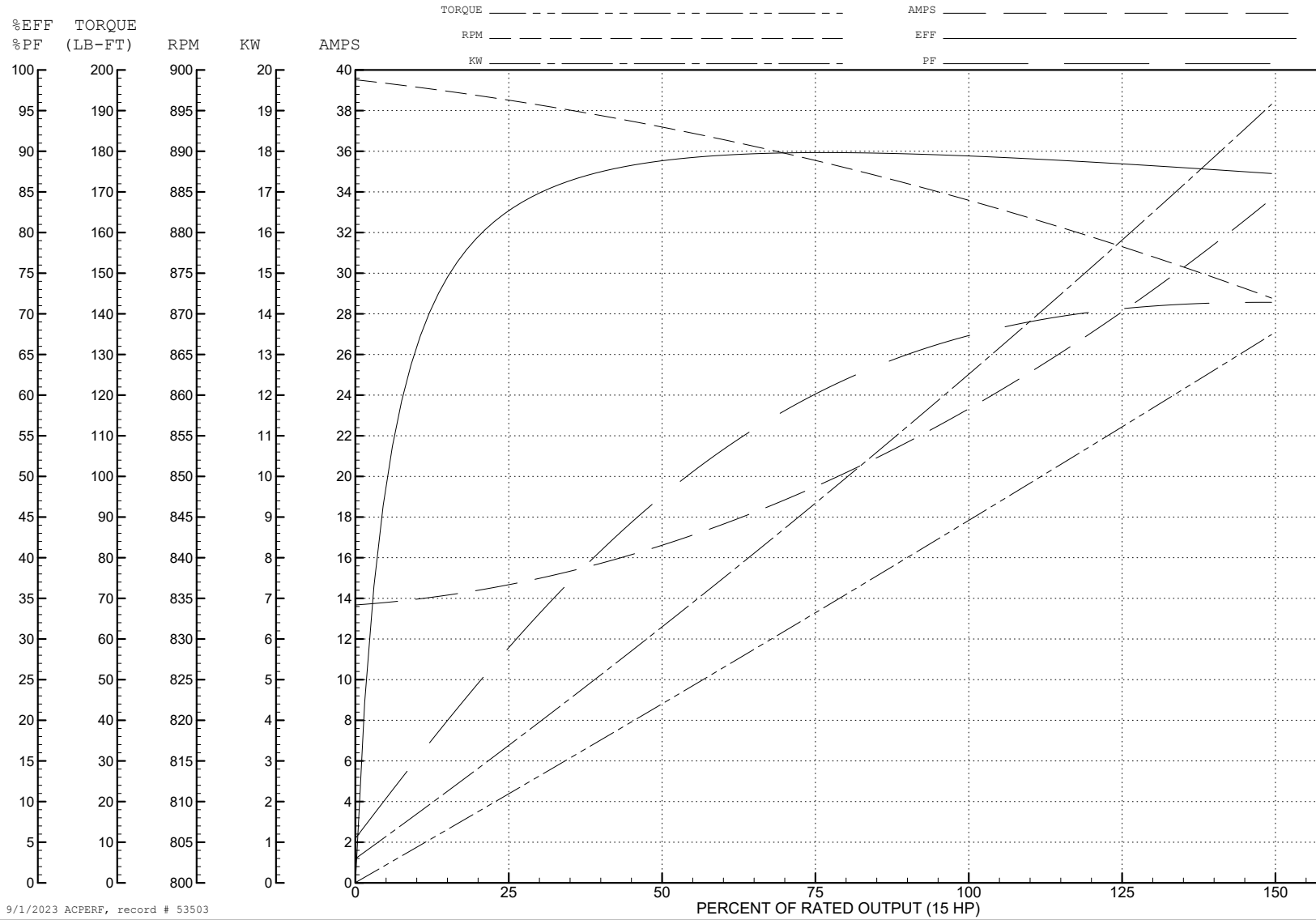
ABB Motors and Mechanical Inc.

WINDING # 10WGZ376

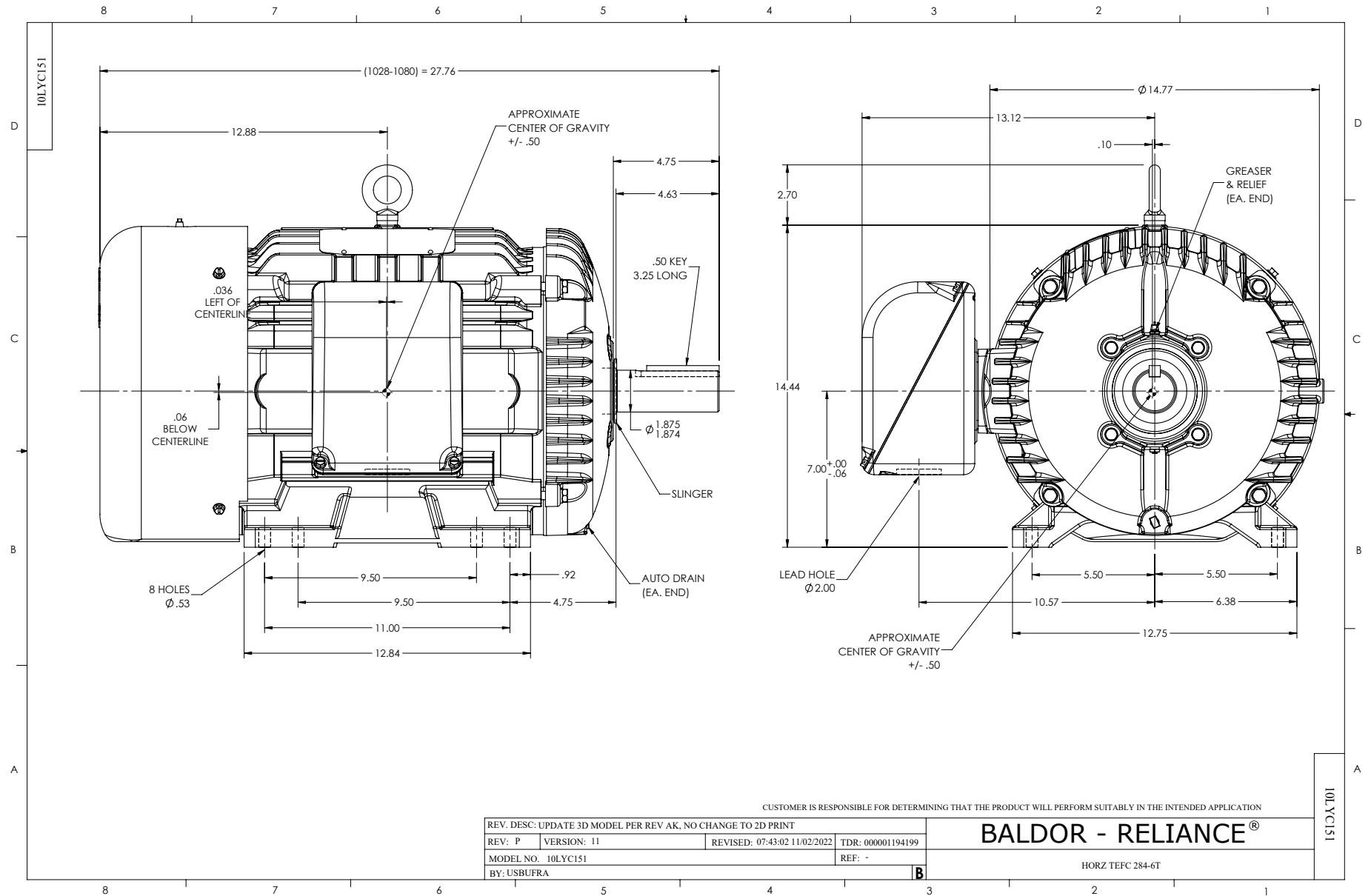
Typical performance - not guaranteed values.

15 HP 3 PH 60 HZ 880 RPM 460 V 1060M

TORQUES (LB-FT): PO=207 PU=91 LR=114 LRA=106



9/1/2023 ACPERF, record # 53503



CUSTOMER IS RESPONSIBLE FOR DETERMINING THAT THE PRODUCT WILL PERFORM SUITABLY IN THE INTENDED APPLICATION

REV. DESC: UPDATE 3D MODEL PER REV AK, NO CHANGE TO 2D PRINT			
REV: P	VERSION: 11	REVISED: 07:43:02 11/02/2022	TDR: 000001194199
MODEL NO. 10LYC151		REF: -	
BY: USBUFRA		B	

BALDOR - RELIANCE®

HORZ TEFC 284-6T

CD0005



LOW VOLTAGE
(2Y)



LINE

HIGH VOLTAGE
(1Y)



LINE

NOTES:

1. INTERCHANGE ANY TWO LINE LEADS TO REVERSE ROTATION.
2. OPTIONAL THERMOSTATS ARE PROVIDED WHEN SPECIFIED.
3. ACTUAL NUMBER OF INTERNAL PARALLEL CIRCUITS MAY BE A MULTIPLE OF THOSE SHOWN ABOVE.
4. LEAD COLORS ARE OPTIONAL. LEADS MUST ALWAYS BE NUMBERED AS SHOWN.

CD0005

REV. DESC: REVISE TO SHOW OPTIONAL COLORS			
REV. LTR: E	BY: JLP	REVISED: 01/19/99 10:15	TDR: 0171435
S00000		FILE: AAA00005140	MDL: -
		MTL: -	

BALDOR ELECTRIC Co.

3PH, DV, 9 LEADS