



---

# Customer information packet

## EM2394T-8

15HP, 3525RPM, 3PH, 60HZ, 254T, 0930M, TEFC, F1

Class - None

Division - Not Applicable

## Specifications

Enclosure	TEFC
Frame	254T
Frame Material	Iron
Frequency	60.00 Hz
Motor Letter Type	Three Phase
Output @ Frequency	15.000 HP @ 60 HZ
Phase	3
Synchronous Speed @ Frequency	3600 RPM @ 60 HZ
Voltage @ Frequency	200.0 V @ 60 HZ
XP Class and Group	None
XP Division	Not Applicable
Agency Approvals	CURUSEEV NEMA PREMIUM NEMA_PREMIUM UR CSA EEV
Ambient Temperature	40 °C
Auxillary Box	No Auxillary Box
Auxillary Box Lead Termination	None
Base Indicator	Rigid
Bearing Grease Type	Polyrex EM (-20F +300F)
Blower	None
Current @ Voltage	40.000 A @ 200.0 V
Design Code	B
Drip Cover	No Drip Cover
Duty Rating	CONT
Efficiency @ 100% Load	91.0 %
Electrically Isolated Bearing	Not Electrically Isolated
Feedback Device	NO FEEDBACK
Front Face Code	Standard
Front Shaft Indicator	None
Heater Indicator	No Heater

## Part detail

Revision	AH
Type	AC
Mech. spec.	09P11
Base	
Status	PRD/A
Elec. spec.	09WGZ580
Layout	09LYP011
Eff. date	08-01-2023
CD Diagram	CD0006
Poles	02
Leads	3#8
Proprietary	False
Created date	04-22-2010

High Voltage Full Load Amps	40.0 a
Insulation Class	F
Inverter Code	Inverter Ready
KVA Code	G
Lifting Lugs	Standard Lifting Lugs
Locked Bearing Indicator	Locked Bearing
Motor Lead Exit	Ko Box
Motor Lead Quantity/Wire Size	3 @ 8 AWG
Motor Lead Termination	Flying Leads
Motor Standards	NEMA
Motor Type	0930M
Mounting Arrangement	F1
Number of Poles	2
Overall Length	23.36 IN
Power Factor	88
Product Family	General Purpose
Pulley End Bearing Type	Ball
Pulley Face Code	Standard
Pulley Shaft Indicator	Standard
Rodent Screen	None
Service Factor	1.15
Shaft Diameter	1.625 IN
Shaft Extension Location	Pulley End
Shaft Ground Indicator	No Shaft Grounding
Shaft Rotation	Reversible
Shaft Slinger Indicator	Shaft Slinger
Speed	3525 rpm
Speed Code	Single Speed
Starting Method	Direct on line
Thermal Device - Bearing	None
Thermal Device - Winding	None
Vibration Sensor Indicator	No Vibration Sensor
Winding Thermal 1	None
Winding Thermal 2	None

**Nameplate**

<b>NP3441L</b>									
<b>CAT.NO.</b>	EM2394T-8								
<b>SPEC.</b>	09P011Z580								
<b>HP</b>	15								
<b>VOLTS</b>	200								
<b>AMP</b>	40								
<b>RPM</b>	3525								
<b>FRAME</b>	254T		<b>HZ</b>	60		<b>PH</b>	3		
<b>SER.F.</b>	1.15	<b>CODE</b>	G	<b>DES</b>	B	<b>CL</b>	F		
<b>NEMA-NOM-EFF</b>	91	<b>PF</b>	88						
<b>RATING</b>	40C AMB-CONT								
<b>CC</b>	010A		<b>USABLE AT 208V</b>				N/A		
<b>DE</b>	6309		<b>ODE</b>	6208					
<b>ENCL</b>	TEFC	<b>SN</b>							
<b>VPWM INVERTER READY</b>									
<b>CT6-60H(10:1)VT3-60H(20:1</b>									

**Accessories**

<b>Part number</b>	<b>Description</b>	<b>Multiplier</b>
09-1309	C FACE KIT	A8

**AC Induction Motor Performance Data**

Record # 30931

Typical performance - not guaranteed values

<b>Winding: 09WGW580-R001</b>		<b>Type: 0930M</b>		<b>Enclosure: TEFC</b>	
<b>Nameplate Data</b>			<b>200 V, 60 Hz: Single Voltage Motor</b>		
<b>Rated Output (HP)</b>	15	<b>Full Load Torque</b>	22.2 LB-FT		
<b>Volts</b>	200	<b>Start Configuration</b>	direct on line		
<b>Full Load Amps</b>	40	<b>Breakdown Torque</b>	90.9 LB-FT		
<b>R.P.M.</b>	3525	<b>Pull-up Torque</b>	29.3 LB-FT		
<b>Hz</b>	60	<b>Phase</b>	3	<b>Locked-rotor Torque</b>	36.4 LB-FT
<b>NEMA Design Code</b>	B	<b>KVA Code</b>	G	<b>Starting Current</b>	262 A
<b>Service Factor (S.F.)</b>	1.15	<b>No-load Current</b>	12.9 A		
<b>NEMA Nom. Eff.</b>	91	<b>Power Factor</b>	88	<b>Line-line Res. @ 25°C</b>	0.131 Ω
<b>Rating - Duty</b>	40C AMB-CONT		<b>Temp. Rise @ Rated Load</b>	60°C	
<b>S.F. Amps</b>			<b>Temp. Rise @ S.F. Load</b>	75°C	
			<b>Locked-rotor Power Factor</b>	30	
			<b>Rotor inertia</b>	0.766 LB-FT <sup>2</sup>	

**Load Characteristics 200 V, 60 Hz, 15 HP**

<b>% of Rated Load</b>	<b>25</b>	<b>50</b>	<b>75</b>	<b>100</b>	<b>125</b>	<b>150</b>	<b>S.F.</b>
<b>Power Factor</b>	59	79	86	89	89	89	89
<b>Efficiency</b>	86.4	90.6	91.4	91.2	90.7	89.8	90.9
<b>Speed</b>	3581	3563	3543	3524	3501	3476	3510
<b>Line amperes</b>	16.1	22.7	30.8	39.7	49.3	59.8	45.5

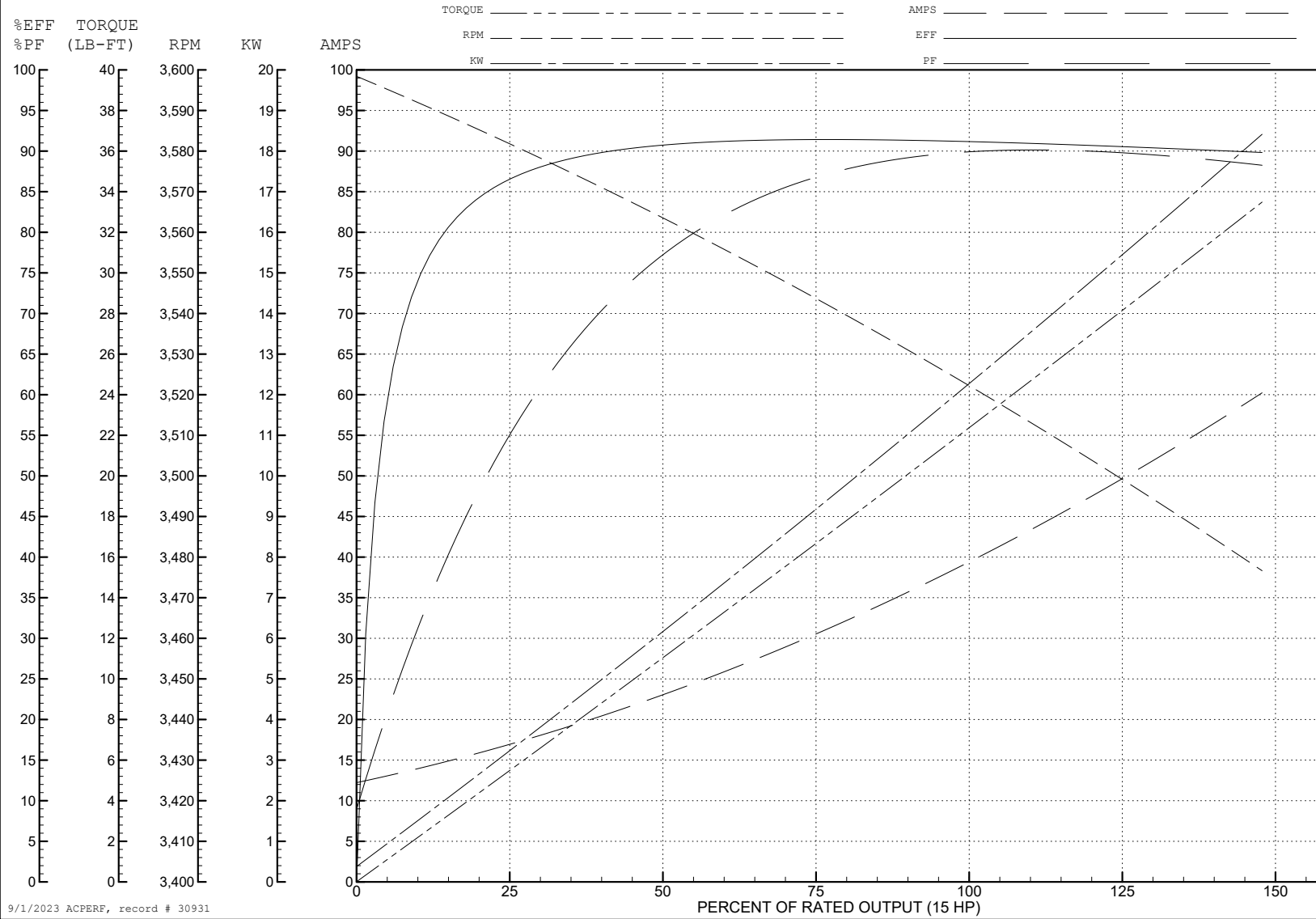
ABB Motors and Mechanical Inc.

WINDING # 09WGZ580

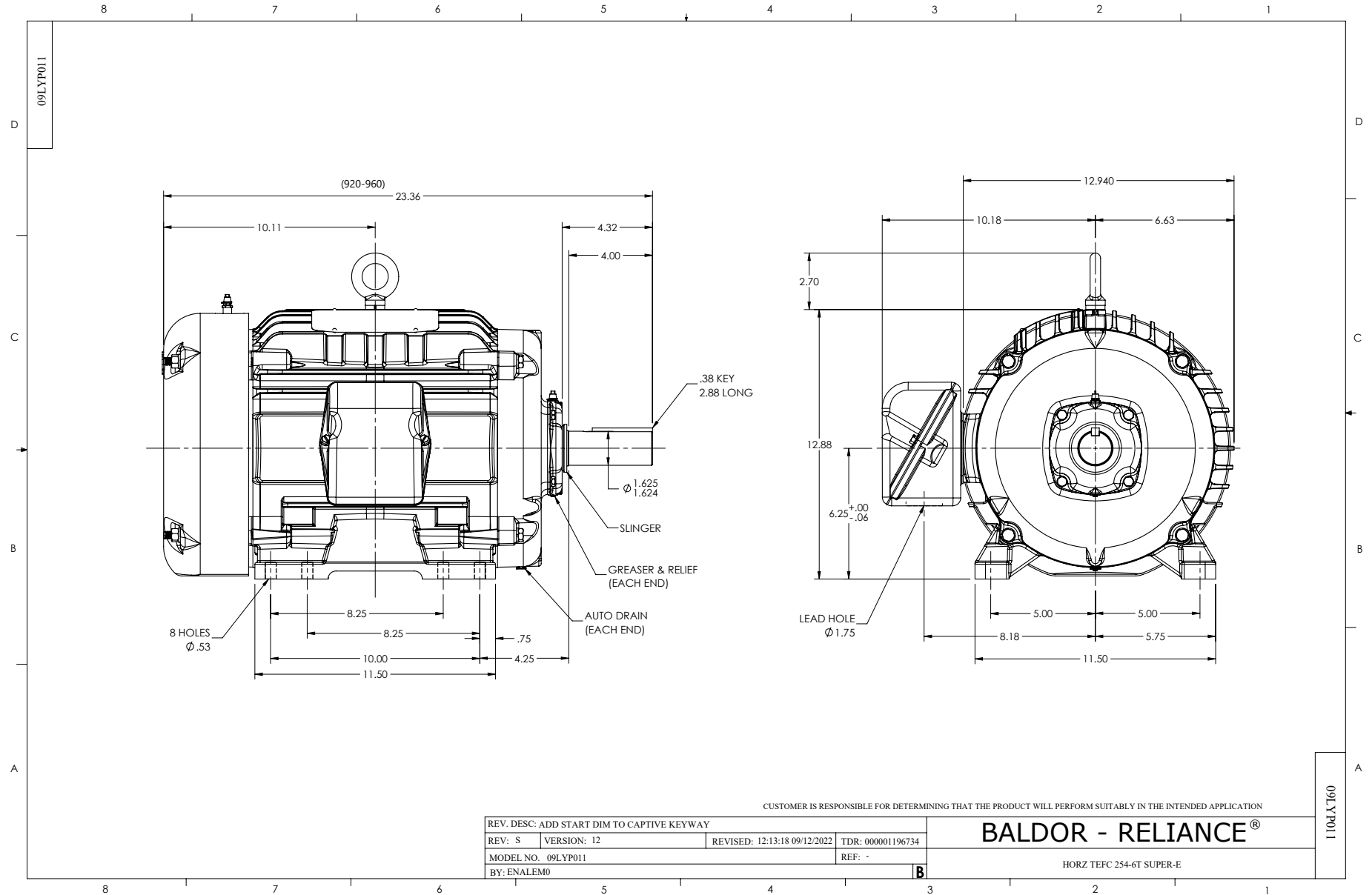
Typical performance - not guaranteed values.

15 HP 3 PH 60 HZ 3525 RPM 200 V 0930M

TORQUES (LB-FT): PO=90.9 PU=29.3 LR=36.4 LRA=262

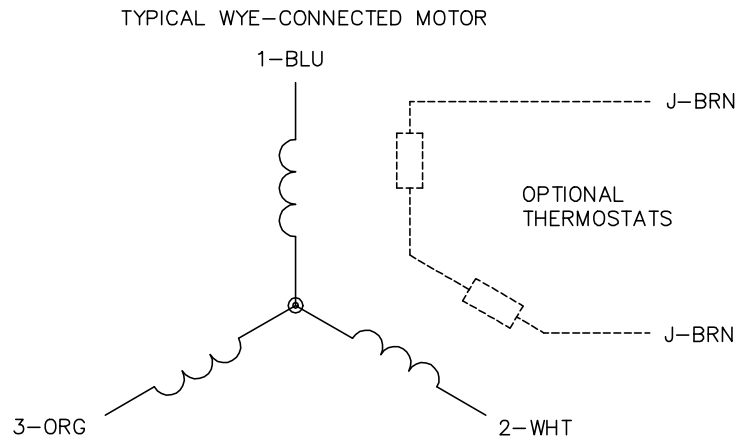


9/1/2023 ACPERF, record # 30931





CD0006



NOTES:

1. THREE LEAD MOTOR MAY BE EITHER WYE CONNECTED OR DELTA CONNECTED.
2. INTERCHANGE ANY TWO LINE LEADS TO REVERSE ROTATION.
3. OPTIONAL THERMOSTATS ARE PROVIDED WHEN SPECIFIED.
4. ACTUAL NUMBER OF INTERNAL PARALLEL CIRCUITS MAY VARY.
5. LEAD COLORS ARE OPTIONAL. LEADS MUST BE NUMBERED AS SHOWN.

CD0006

REV. DESC: ADD CLASS CONN00000007		
REV. LTR: E	VERSION: 01	TDR: 000001099922
FILE: \AAA\00005\141	REVISED: 10:24:49 02/19/2019	BY: ENBRIRO
MTL: -		© □

**BALDOR - RELIANCE®**

3PH, SV, 3 LEADS, WYE OR DELTA CONNECTED

SH 1 of 1