



---

# Customer information packet

## EM2333T-58

15HP, 1450RPM, 3PH, 50HZ, 254T, 0948M, TEFC, F1

Class - None

Division - Not Applicable

## Specifications

Enclosure	TEFC
Frame	254T
Frame Material	Iron
Frequency	50.00 Hz
Motor Letter Type	Three Phase
Output @ Frequency	15.000 HP @ 50 HZ
Phase	3
Synchronous Speed @ Frequency	1500 RPM @ 50 HZ
Voltage @ Frequency	400.0 V @ 50 HZ
XP Class and Group	None
XP Division	Not Applicable
Agency Approvals	CE CSA CURUS IE3 UKCA UR WEEE
Ambient Temperature	40 °C
Auxillary Box	No Auxillary Box
Auxillary Box Lead Termination	None
Base Indicator	Rigid
Bearing Grease Type	Polyrex EM (-20F +300F)
Blower	None
Current @ Voltage	21.000 A @ 400.0 V
Design Code	B
Drip Cover	No Drip Cover
Duty Rating	CONT
Efficiency @ 100% Load	91.4 %
Electrically Isolated Bearing	Not Electrically Isolated
Feedback Device	NO FEEDBACK
Front Face Code	Standard

## Part detail

Revision	W
Type	AC
Mech. spec.	09F103
Base	
Status	PRD/A
Elec. spec.	09WGZ837
Layout	09LYF103
Eff. date	06-15-2023
CD Diagram	CD0382
Poles	04
Leads	6#12
Proprietary	False
Created date	04-03-2015

Front Shaft Indicator	None
Heater Indicator	No Heater
High Voltage Full Load Amps	21.0 a
Insulation Class	F
Inverter Code	Not Inverter
KVA Code	H
Lifting Lugs	Standard Lifting Lugs
Locked Bearing Indicator	Locked Bearing
Motor Lead Exit	Ko Box
Motor Lead Quantity/Wire Size	6 @ 12 AWG
Motor Lead Termination	Flying Leads
Motor Standards	NEMA
Motor Type	0948M
Mounting Arrangement	F1
Number of Poles	4
Overall Length	23.55 IN
Power Factor	81
Product Family	General Purpose
Pulley End Bearing Type	Ball
Pulley Face Code	Standard
Pulley Shaft Indicator	Standard
Rodent Screen	None
RoHS Status	ROHS COMPLIANT
Service Factor	1.15
Shaft Diameter	1.625 IN
Shaft Extension Location	Pulley End
Shaft Ground Indicator	No Shaft Grounding
Shaft Rotation	Reversible
Shaft Slinger Indicator	Shaft Slinger
Speed	1450 rpm
Speed Code	Single Speed
Starting Method	Wye Start - Delta Run
Thermal Device - Bearing	None
Thermal Device - Winding	None

**Vibration Sensor Indicator****No Vibration Sensor****Winding Thermal 1****None****Winding Thermal 2****None**

---

**Nameplate**

<b>NP3444L</b>									
<b>CAT NO</b>	EM2333T-58								
<b>SPEC.</b>	09F103Z837G1								
<b>HP</b>	15/11.1KW				<b>PH</b>	3			
<b>VOLTS</b>	400								
<b>AMP</b>	21								
<b>RPM</b>	1450 1/MIN IC411 130KG								
<b>FRAME</b>	254T	<b>HZ</b>	50	<b>I.P.</b>	44				
<b>SER.F.</b>	1.15	<b>CODE</b>	H	<b>DES</b>	B	<b>CL</b>	F		
<b>NOM.EFF.</b>	91.4								
<b>PF</b>	81	<b>USABLE AT 208V</b>				N/A			
<b>RATING</b>	40C AMB-S1 CONT			<b>CC</b>					
<b>DE BRG</b>	6309	<b>ODE</b>	6208						
<b>ENCL</b>	TEFC	<b>SN</b>							
<b>VPWM INVERTER READY</b>									
<b>CT5-50(10:1)VT2.5-50(20:1</b>									
<b>BLANK</b>	IE3-91.8(75%)91.1(50%)								

**AC Induction Motor Performance Data**

Record # 49902

Typical performance - not guaranteed values

Winding: 09WGZ837-R003		Type: 0948M		Enclosure: TEFC	
<b>Nameplate Data</b>			<b>400 V, 50 Hz: Single Voltage Motor</b>		
Rated Output (HP)	15	Full Load Torque	54 LB-FT		
Volts	400	Start Configuration	direct on line		
Full Load Amps	21	Breakdown Torque	204 LB-FT		
R.P.M.	1450	Pull-up Torque	82.8 LB-FT		
Hz	50 Phase	3	Locked-rotor Torque	124 LB-FT	
NEMA Design Code	B	KVA Code	H	Starting Current	139 A
Service Factor (S.F.)	1.15	No-load Current	8.2 A		
NEMA Nom. Eff.	91.4	Power Factor	81	Line-line Res. @ 25°C	0.485 Ω
Rating - Duty	40C AMB-CONT		Temp. Rise @ Rated Load	59°C	
S.F. Amps			Temp. Rise @ S.F. Load	73°C	
			Locked-rotor Power Factor	36.8	
			Rotor inertia	2.1 lb-ft <sup>2</sup>	

**Load Characteristics 400 V, 50 Hz, 15 HP**

% of Rated Load	25	50	75	100	125	150	S.F.
Power Factor	49	70	80	83	85	86	84
Efficiency	87	91.1	91.8	91.4	90.5	89.7	91.1
Speed	1491	1483	1477	1470	1449	1443	1457
Line amperes	9.74	12.8	16.7	21.3	26	31	24.1

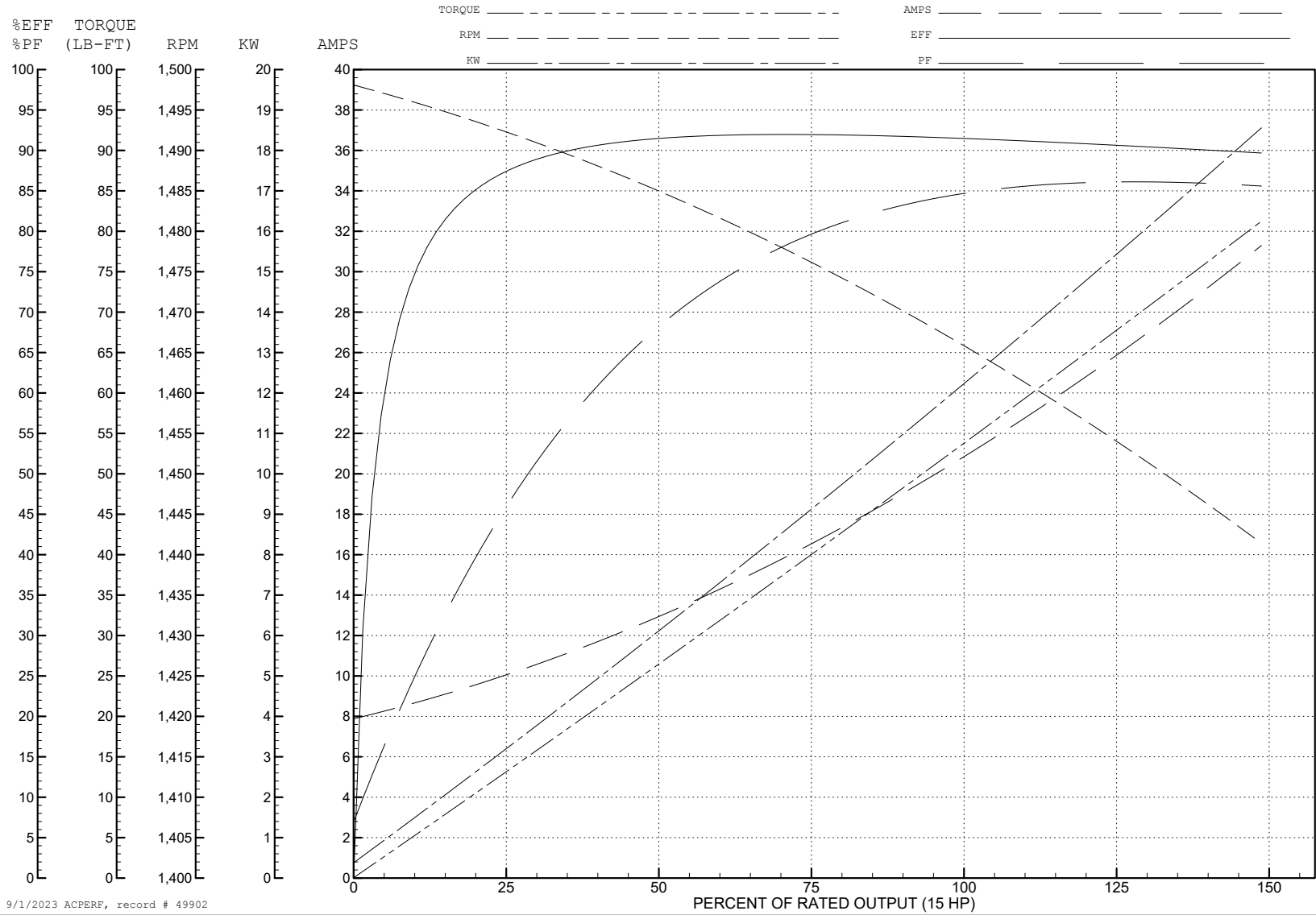
ABB Motors and Mechanical Inc.

WINDING # 09WGZ837

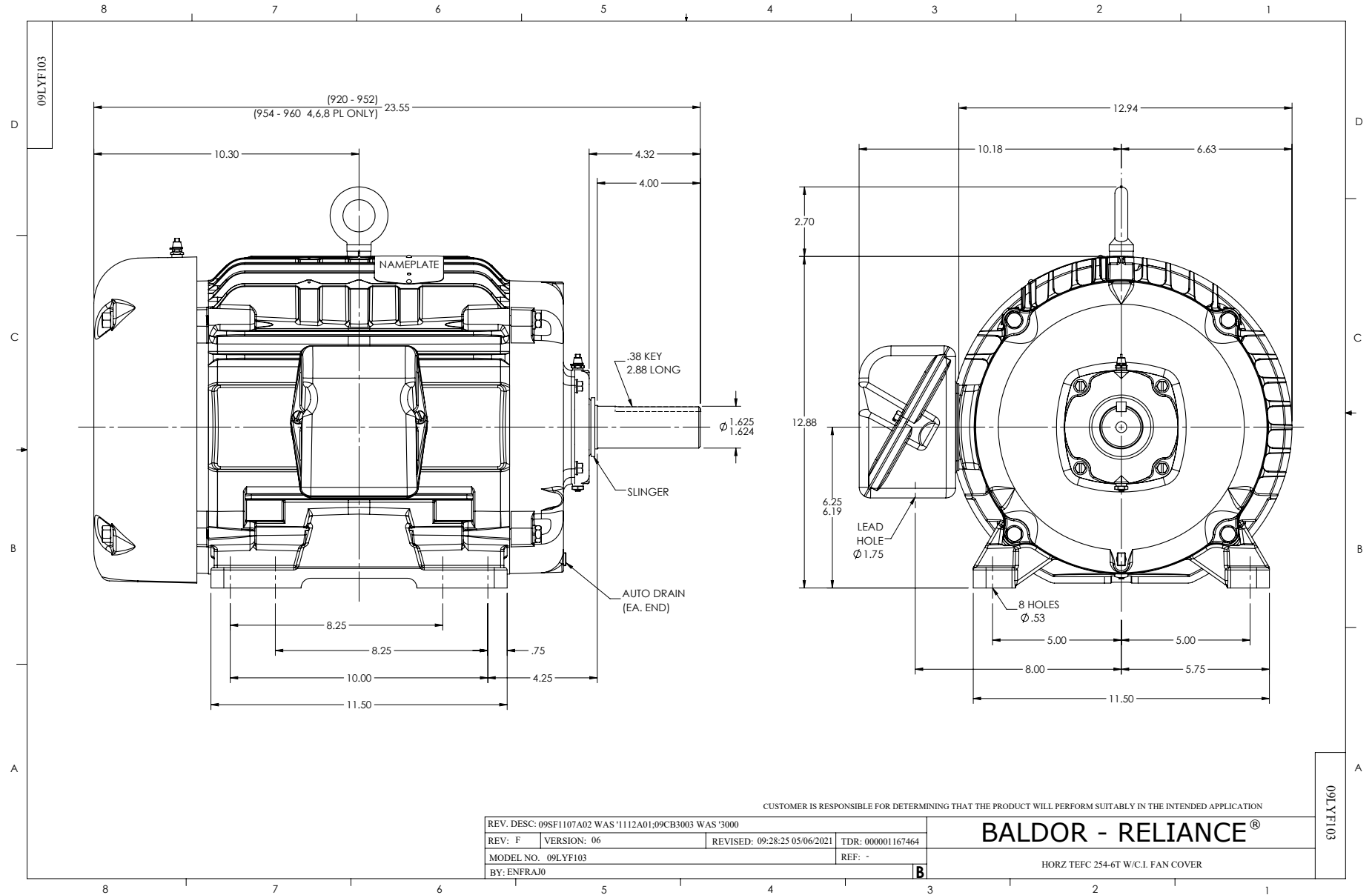
Typical performance - not guaranteed values.

15 HP 3 PH 50 HZ 1450 RPM 400 V 0948M

TORQUES (LB-FT): PO=204 PU=82.8 LR=124 LRA=139

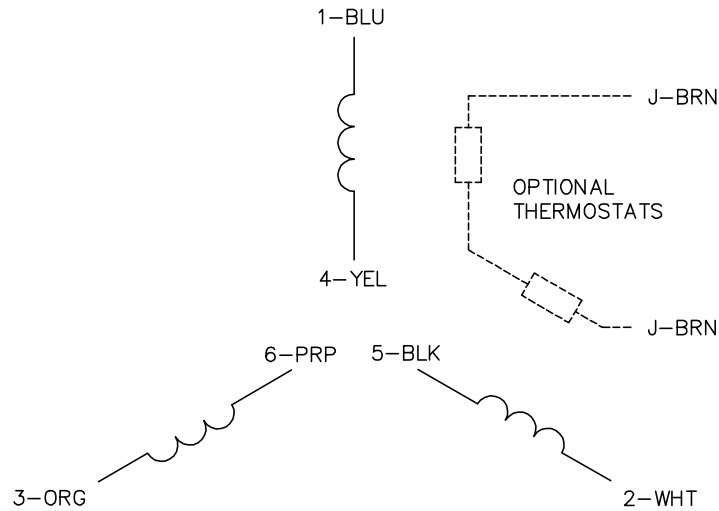


9/1/2023 ACPERF, record # 49902

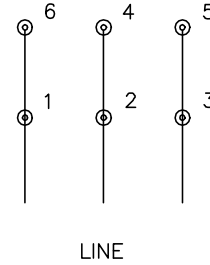




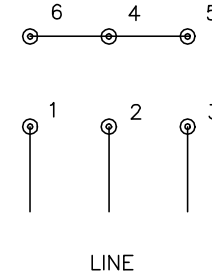
CD0382



RUN CONNECTION (1D)



START CONNECTION (1Y)



NOTES:

1. INTERCHANGE ANY TWO LINE LEADS TO REVERSE ROTATION.
2. OPTIONAL THERMOSTATS ARE PROVIDED WHEN SPECIFIED.
3. ACTUAL NUMBER OF INTERNAL PARALLEL CIRCUITS MAY BE A MULTIPLE OF THOSE SHOWN ABOVE.
4. LEAD COLORS ARE OPTIONAL. LEADS MUST ALWAYS BE NUMBERED AS SHOWN.
5. FOR ACROSS-THE-LINE STARTING, USE 'RUN' CONNECTION.

CD0382

REV. DESC: ADD CLASS CONN00000007		
REV. LTR: F	VERSION: 01	TDR: 000001099922
FILE: \AAA\00005\243	REVISED: 09:05:32 02/19/2019	BY: ENBRIRO
MTL: -	© □	

**BALDOR - RELIANCE®**

3PH, SV, 6 LEADS, Y START/D RUN

SH 1 of 1