

BALDOR • RELIANCE

Customer information packet

EL3514

1.5HP, 1725RPM, 1PH, 60HZ, 56H, 3532LC, TEFC, F

Part detail

Revision	B
Type	AC
Mech. spec.	35J385
Base	
Status	PRD/A
Elec. spec.	35WGG242
Layout	35LYJ385
Eff. date	11-01-2022
CD Diagram	CD0016A01
Poles	04
Leads	7#18
Proprietary	False
Created date	08-01-2022

Nameplate

NP2116L									
CAT.NO.	EL3514								
SPEC.	35J385G242G2								
HP	1.5								
VOLTS	115/230								
AMP	12.2/6.1								
RPM	1725								
FRAME	56H			HZ	60		PH	1	
SER.F.	1.15	CODE	H	DES	L	CL	F		
NEMA-NOM-EFF	80	PF	98						
RATING	40C AMB-CONT								
CC				USABLE AT 208V					
DE	6205	ODE	6203						
ENCL	TEFC	SN							
	SFA 14.4/7.2								

Parts list

Part number	Description	Quantity
SA407281	SA 35J385G242G2	1.000 ea
RA398780	RA 35J385G242G2	1.000 ea
OC3025F11	CYL OIL CAP 25MFD/370V	1.000 ea
EC1540A06SP	ELEC CAP, 540-648 MFD, 125V, 2.06D X 4.	1.000 ea
WD3006A01	RSS-2-103JT 2W 10K RES. METAL OXIDE 5%	1.000 ea
NS2512A01	INSULATOR, CONDUIT BOX X	1.000 ea
35CB3007	35 CB CASTING W/.88 DIA. LEAD HOLE	1.000 ea
36GS1000SP	GASKET-CONDUIT BOX, .06 THICK #SV-330 LE	1.000 ea
51XB1016A07	10-16 X 7/16 HXWSSLD SERTYB	2.000 ea
11XW1032G06	10-32 X .38, TAPTITE II, HEX WSHR SLTD U	1.000 ea
35EP3122K00	MASTER ODE,203 BRG,.683SH,#26 DRN,FH MTG	1.000 ea
51XW0832A07	8-32 X .44, TAPTITE II, HEX WSHR SLTD SE	2.000 ea
35CB3801	CAPACITOR COVER, CAST	1.000 ea
34GS3002	GASKET, CAPACITOR BOX	1.000 ea
HA7010	CAPACITOR RETENTION CLAMP	1.000 ea
51XB1016A08	10-16X 1/2HXWSSLD SERTYB	2.000 ea
NS2501A02	INSULATOR, CAPACITOR BOX	1.000 ea
HW5100A03	WAVY WASHER (W1543-017)	1.000 ea
35EP3123A00	MASTER DE,205 BRG,.998SH,#26 DRN	1.000 ea
XY1032A02	10-32 HEX NUT DIRECTIONAL SERRATION	4.000 ea
51XB1214A16	12-14X1.00 HXWSSLD SERTYB	1.000 ea
35FH4005A32SP	IEC FH NO GRSR W/3 HOLES - PRIMED	1.000 ea
51XW1032A06	10-32 X .38, TAPTITE II, HEX WSHR SLTD S	3.000 ea
35CB4521GX	CONDUIT BOX LID KIT **ORDER INDIV PARTS	1.000 ea
51XW0832A07	8-32 X .44, TAPTITE II, HEX WSHR SLTD SE	4.000 ea
HW2501D13	KEY, 3/16 SQ X 1.375	1.000 ea
HA7000A04	KEY RETAINER 0.625 DIA SHAFTS	1.000 ea
85XU0407S04	4X1/4 U DRIVE PIN STAINLESS	2.000 ea
WD1000A15	3-520132-2 AMP FLAG (4M/RL NON-CANC/NON-	4.000 ea
MJ1000A02	GREASE, POLYREX EM EXXON	0.050 lb
35FN3002A05SP	EXFN, PLASTIC, 6.376 OD, .638 ID	1.000 ea

NP2116L	ALUM SUPER-E UL CSA CC	1.000 ea
HA3100A22	THRUBOLT 10-32 X 10.125	4.000 ea
MG1000Y03	MUNSELL 2.53Y 6.70/ 4.60, GLOSS 20,	0.017 ga
SP5181A03	MODEL 35 LC TORQ STAT SWITCH LEAD ASSY	1.000 ea
LC0016	CONNECTION LABEL	1.000 ea
LB1119N	WARNING LABEL	1.000 ea
36PA1000	PKG GRP, PRINT PK1016A06	1.000 ea
MN416A01	TAG-INSTAL-MAINT no wire (2100bx)4/22	1.000 ea
FE-0000001	ZRTG FE ASSEMBLY	1.000 ea
PE-0000001	ZRTG PE ASSEMBLY	1.000 ea

Accessories

Part number	Description	Multiplier
35-8762	C FACE KIT	A8
35EP1506A01SP	D-FLANGE KIT	A8

AC Induction Motor Performance Data

Record # 88494

Typical performance - not guaranteed values

Winding: 35WGG242-R001		Type: 3532LC	Enclosure: TEFC	
Nameplate Data			230 V, 60 Hz: High Voltage Connection	
Rated Output (HP)	1.5		Full Load Torque	4.566 LB-FT
Volts	115/230		Start Configuration	direct on line
Full Load Amps	13.4/6.7		Breakdown Torque	9.93 LB-FT
R.P.M.	1725		Pull-up Torque	8.07 LB-FT
Hz	60 Phase	1	Locked-rotor Torque	13 LB-FT
NEMA Design Code	L	KVA Code H	Starting Current	44 A
Service Factor (S.F.)	1.15		No-load Current	0.84 A
NEMA Nom. Eff.	80	Power Factor 90	Line-line Res. @ 25°C	2.1263 Ω A Ph 1.3142 Ω B Ph
Rating - Duty	40C AMB-CONT		Temp. Rise @ Rated Load	61°C
S.F. Amps			Temp. Rise @ S.F. Load	84°C

Load Characteristics 230 V, 60 Hz, 1.5 HP

% of Rated Load	25	50	75	100	125	150	S.F.
Power Factor	94	98	98	98	97	96	97
Efficiency	71.4	82.5	84.1	82.3	77.7	70.5	79.5
Speed	1782.1	1765.3	1746.2	1722.8	1689.8	1641.6	1703
Line amperes	1.77	3.01	4.42	6.03	8.04	10.7	7.24

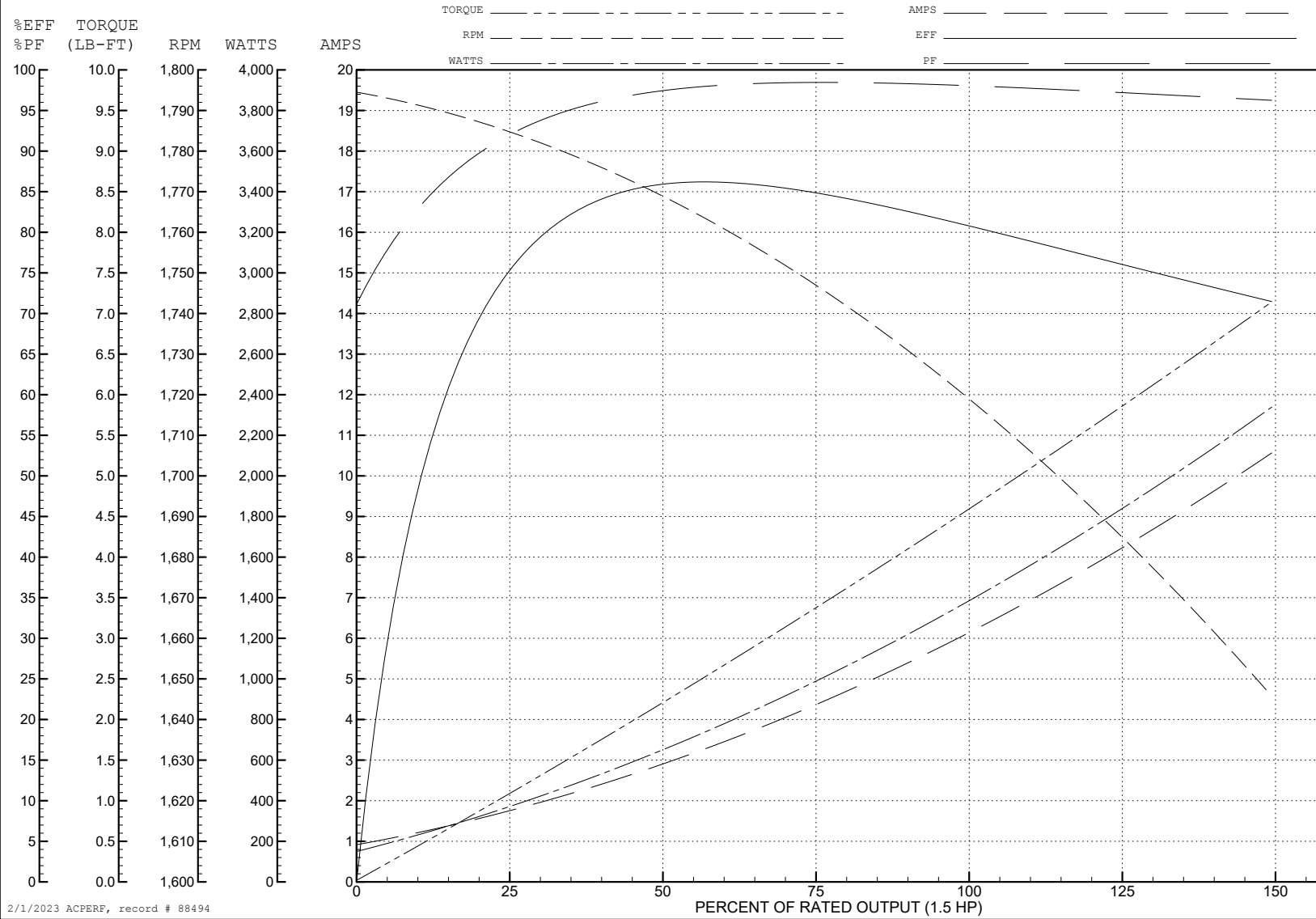
ABB Motors and Mechanical Inc.

WINDING # 35WGG242

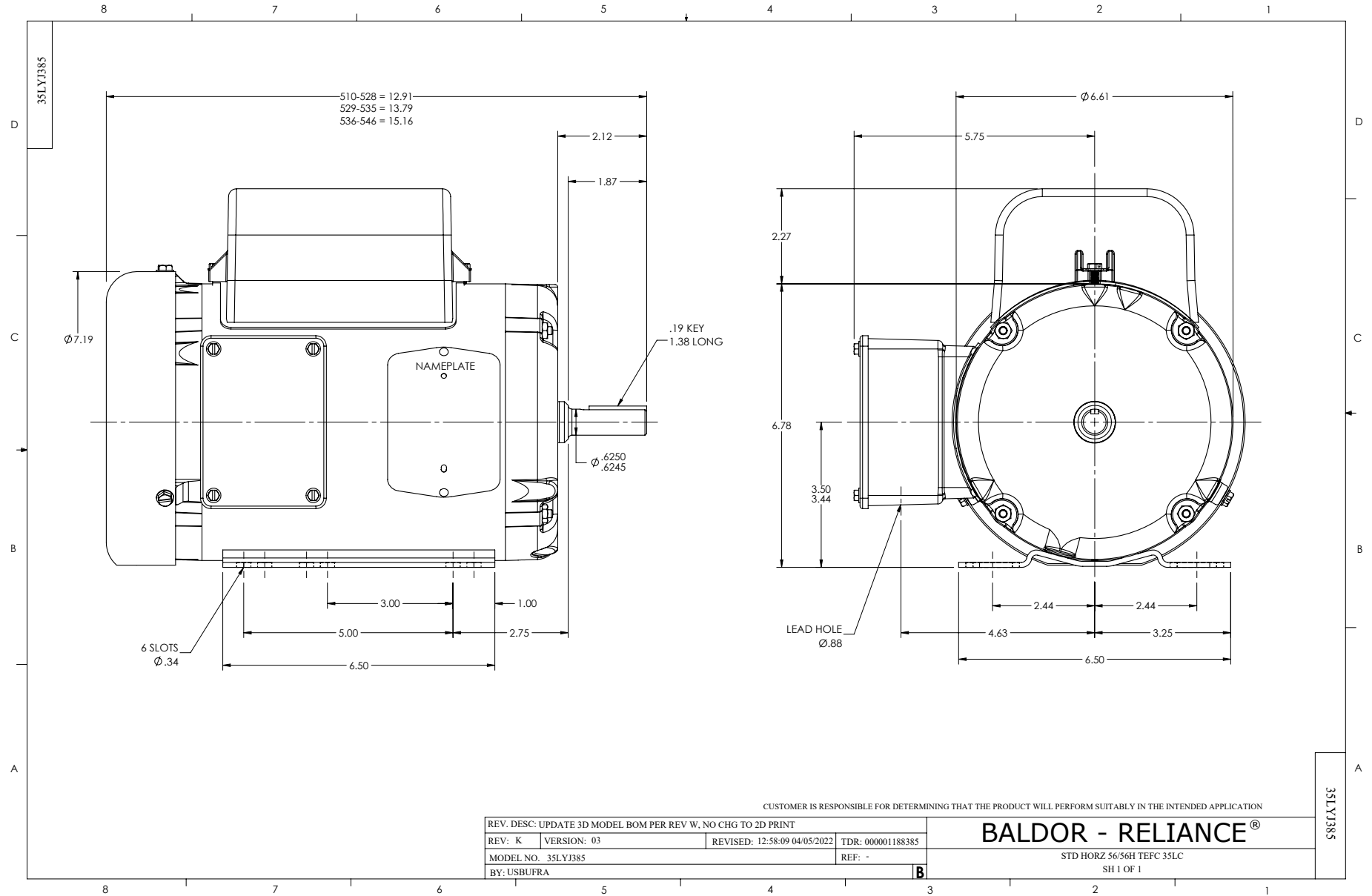
Typical performance - not guaranteed values.

1.5 HP 1 PH 60 HZ 1725 RPM 230 V 3532LC

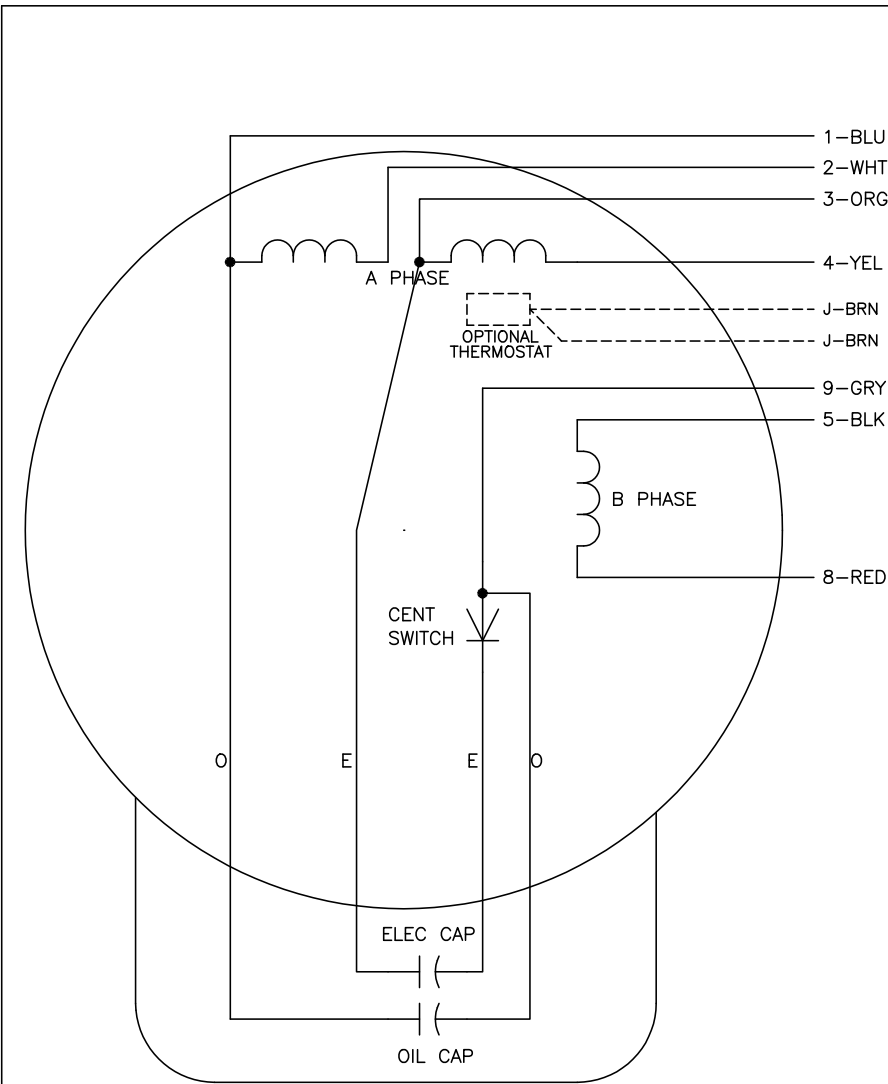
TORQUES (LB-FT): PO=9.93 PU=8.07 LR=13 LRA=44



2/1/2023 ACPERP, record # 88494



CD0016A01



	LINE A	LINE B	JOIN	JOIN
HIGH STD	1	4,5	2,3	8,9
HIGH OPP	1	4,8	2,3	5,9
LOW STD	1,3	2,4,5	8,9	-
LOW OPP	1,3	2,4,8	5,9	-

NOTES:

1. STANDARD ROTATION IS CCW FACING END OPPOSITE SHAFT EXTENSION.
2. OPTIONAL THERMOSTAT IS PROVIDED WHEN SPECIFIED.
3. MULTIPLE CAPACITORS ARE CONNECTED IN PARALLEL UNLESS OTHERWISE SPECIFIED.
4. LEAD COLORS ARE OPTIONAL. LEADS MUST ALWAYS BE NUMBERED AS SHOWN.

CD0016A01

REV. DESC: REVISE TO SHOW OPTIONAL COLORS			
REV. LTR: E	BY: JLP	REVISED: 04/09/99 1:19	TDR: 0178636
10A91000		FILE: AAA00007410	MDL: -
		MTL: -	

BALDOR ELECTRIC Co.

TYPE LC, DV, REV, OIL CAP ACR. LINE, 7 LEADS